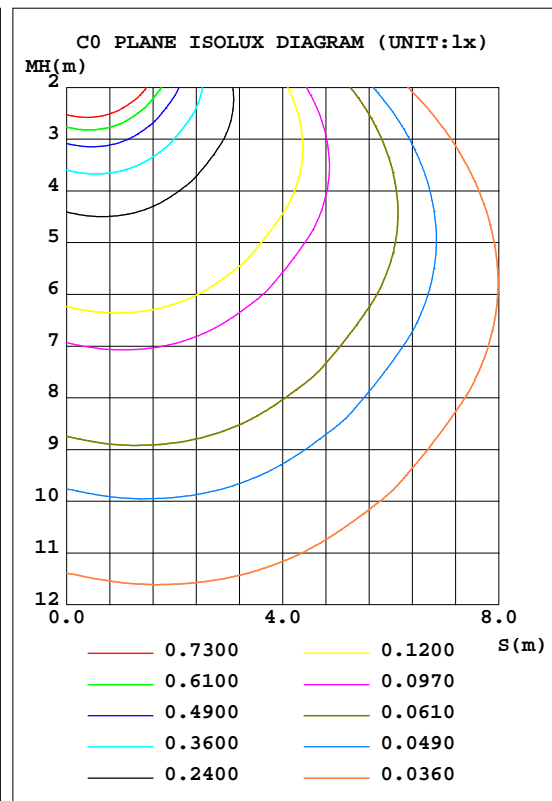
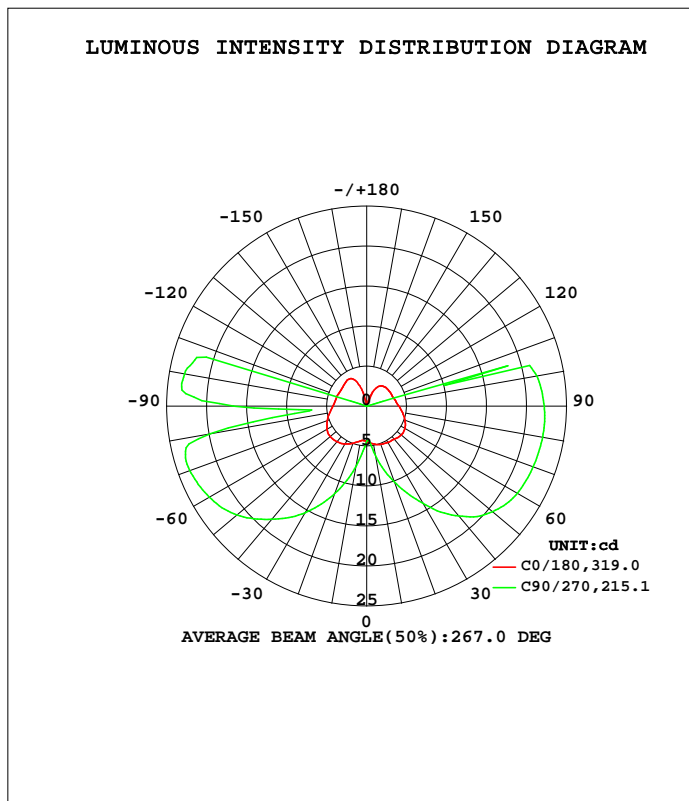


LUMINAIRE PHOTOMETRIC TEST REPORT

Test:U:11.985V I:0.2272A P:1.8540W PF:0.6809 Freq:50.00Hz Lamp Flux:155.977x1 lm		
NAME: 487171-G4-2W-6000K	TYPE:	WEIGHT:
SPEC.:	DIM.:	SERIAL No.:
MFR.:	SUR.:	Shielding Angle:

DATA OF LAMP		PHOTOMETRIC DATA			
MODEL		I _{max} (cd)	26.75	S/MH(C0/180)	1.92
NOMINAL POWER(W)	--	LOR(%)	100.0	S/MH(C90/270)	3.66
RATED VOLTAGE(V)	--	TOTAL FLUX(lm)	155.98	η UP, DN(C0-180)	17.0,31.0
NOMINAL FLUX(lm)	155.977	CIE CLASS	SEMI-D.	η UP, DN(C180-360)	18.9,33.1
LAMPS INSIDE	1	η up(%)	35.9	CIBSE SHR NOM	1.25
TEST VOLTAGE(V)	--	η down(%)	64.1	CIBSE SHR MAX	1.35



C Range: 0 - 360DEG
 C Interval: 22.5DEG
 Test Speed: HIGH
 Temperature:25.3DEG
 Operators:DAMIN
 Test Date:2022-05-06

γ Range: 0 - 180DEG
 γ Interval: 1.0DEG
 Test System:EVERFINE GO-3000H_V1 SYSTEM V2.00.411
 Humidity:65.0%
 Test Distance:9.000m [K=1.0000]
 Remarks:

ZONAL FLUX DIAGRAM

ZONAL FLUX DIAGRAM:

γ	C0	C45	C90	C135	C180	C225	C270	C315	γ	Φ zone	Φ total	%lum,lamp
10	4.813	5.678	6.238	4.759	4.433	6.418	7.578	6.709	0- 10	0.4924	0.4924	0.32,0.32
20	5.108	8.873	10.06	7.546	4.941	9.703	11.62	9.761	10- 20	2.062	2.555	1.64,1.64
30	5.274	12.08	14.02	10.77	5.485	13.28	15.38	12.58	20- 30	4.583	7.138	4.58,4.58
40	5.413	15.38	17.95	14.10	5.805	16.65	18.48	15.25	30- 40	7.883	15.02	9.63,9.63
50	5.645	18.16	20.54	16.56	5.957	19.52	21.20	17.54	40- 50	11.59	26.61	17.1,17.1
60	5.545	20.51	21.79	17.70	5.749	22.25	22.73	19.57	50- 60	15.26	41.86	26.8,26.8
70	5.091	22.73	22.16	19.11	5.252	24.35	23.54	21.04	60- 70	18.25	60.11	38.5,38.5
80	4.546	24.36	22.34	20.28	4.704	25.57	19.85	21.81	70- 80	20.01	80.12	51.4,51.4
90	4.034	25.01	22.20	20.69	4.233	25.93	16.68	21.87	80- 90	19.88	100.0	64.1,64.1
100	3.700	24.69	21.63	20.46	4.003	25.39	23.13	21.32	90-100	20.21	120.2	77.1,77.1
110	3.484	23.23	0.1422	19.55	3.917	24.00	0.2949	20.03	100-110	17.61	137.8	88.4,88.4
120	3.432	15.09	0.1074	13.51	3.824	19.06	0.1610	16.43	110-120	11.12	148.9	95.5,95.5
130	3.377	0.0744	0.0915	0.0989	3.861	0.1119	0.1073	0.1872	120-130	5.550	154.5	99,99
140	3.246	0.0616	0.0765	0.0839	4.042	0.0804	0.0733	0.1850	130-140	0.8780	155.4	99.6,99.6
150	2.779	0.0534	0.0643	0.0652	3.988	0.0684	0.0514	0.1437	140-150	0.3416	155.7	99.8,99.8
160	1.369	0.0383	0.0469	0.0480	2.851	0.0541	0.0416	0.0584	150-160	0.2034	155.9	100,100
170	0.0459	0.0338	0.0363	0.0434	0.0516	0.0488	0.0363	0.0539	160-170	0.0616	156.0	100,100
180	0.0388	0.0391	0.0363	0.0464	0.0431	0.0413	0.0363	0.0449	170-180	0.0041	156.0	100,100
DEG	LUMINOUS INTENSITY:cd									UNIT:lm		

Conical surface Flux(90deg): 20.339 lm

%lum = 13.0%
%lamp = 13.0%

Conical surface Flux(120deg): 41.862 lm

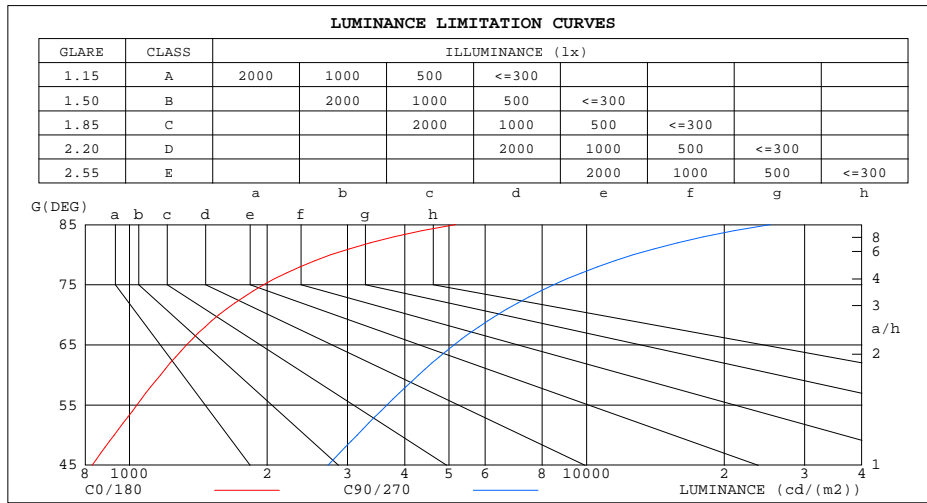
%lum = 26.8%
%lamp = 26.8%

C Range: 0 - 360DEG
C Interval: 22.5DEG
Test Speed: HIGH
Temperature:25.3DEG
Operators:DAMIN
Test Date:2022-05-06

γ Range: 0 - 180DEG
 γ Interval: 1.0DEG
Test System:EVERFINE GO-3000H_V1 SYSTEM V2.00.411
Humidity:65.0%
Test Distance:9.000m [K=1.0000]
Remarks:

LUMINANCE LIMITATION CURVES

Test:U:11.985V I:0.2272A P:1.8540W PF:0.6809 Freq:50.00Hz Lamp Flux:155.977x1 lm		
NAME: 487171-G4-2W-6000K	TYPE:	WEIGHT:
SPEC.:	DIM.:	SERIAL No.:
MFR.:	SUR.:	Shielding Angle:



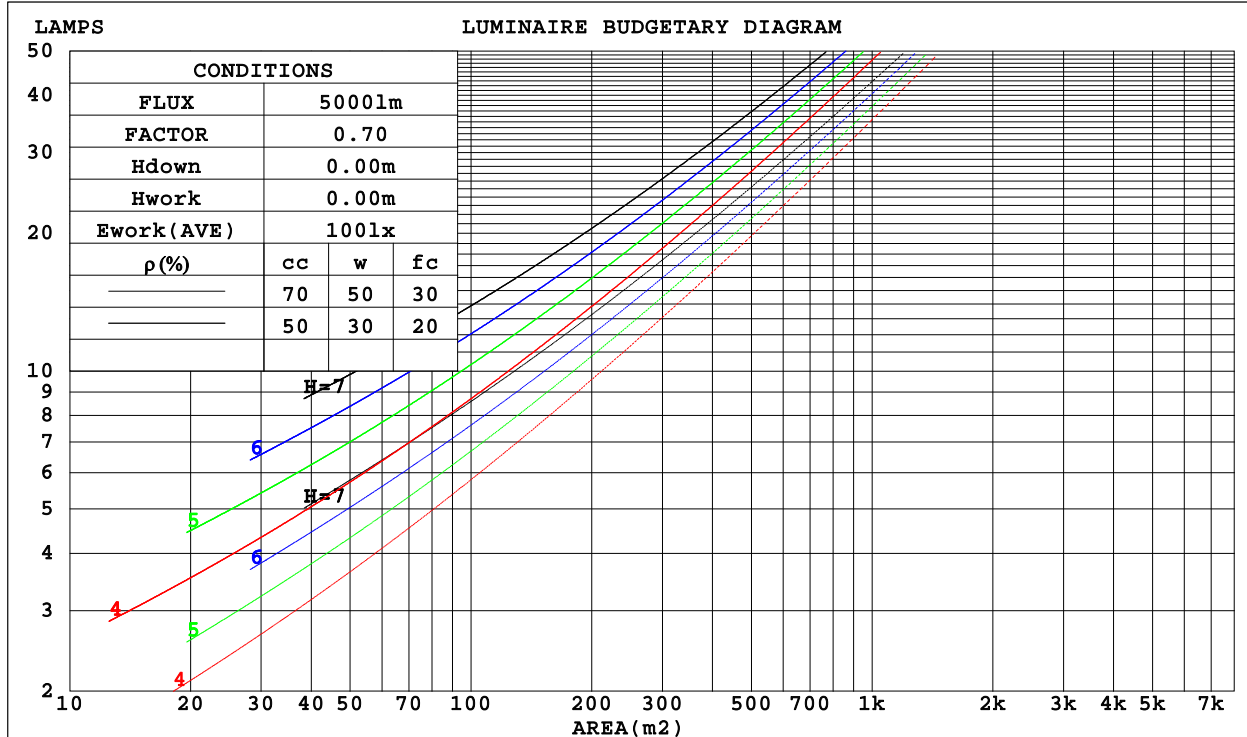
C Range: 0 - 360DEG
 C Interval: 22.5DEG
 Test Speed: HIGH
 Temperature: 25.3DEG
 Operators: DAMIN
 Test Date: 2022-05-06

γ Range: 0 - 180DEG
 γ Interval: 1.0DEG
 Test System: EVERFINE GO-3000H_V1 SYSTEM V2.00.411
 Humidity: 65.0%
 Test Distance: 9.000m [K=1.0000]
 Remarks:

CU AND LUMINAIRE BUDGETARY ESTIMATE DIAGRAM

Test:U:11.985V I:0.2272A P:1.8540W PF:0.6809 Freq:50.00Hz Lamp Flux:155.977x1 lm		
NAME: 487171-G4-2W-6000K	TYPE:	WEIGHT:
SPEC.:	DIM.:	SERIAL No.:
MFR.:	SUR.:	Shielding Angle:

ρ _{cc}	80%			70%			50%			30%			10%			0
ρ _w	50%	30%	10%	50%	30%	10%	50%	30%	10%	50%	30%	10%	50%	30%	10%	0
ρ _{fc}	20%			20%			20%			20%			20%			0
RCR	RCR:Room Cavity Ratio						Coefficients of Utilization(CU)									
0.0	1.11	1.11	1.11	1.04	1.04	1.04	.91	.91	.91	.80	.80	.80	.69	.69	.69	.64
1.0	.87	.81	.75	.81	.75	.70	.70	.65	.61	.60	.56	.53	.51	.48	.45	.40
2.0	.72	.63	.56	.67	.59	.52	.58	.51	.45	.49	.44	.39	.41	.37	.33	.29
3.0	.61	.51	.43	.57	.48	.41	.49	.41	.35	.41	.35	.30	.34	.29	.25	.21
4.0	.53	.43	.35	.49	.40	.33	.42	.34	.28	.35	.29	.24	.29	.24	.20	.16
5.0	.46	.36	.29	.43	.34	.27	.37	.29	.23	.31	.25	.20	.25	.20	.16	.13
6.0	.41	.31	.24	.38	.29	.22	.33	.25	.19	.27	.21	.16	.23	.17	.13	.10
7.0	.37	.27	.20	.34	.25	.19	.29	.22	.16	.25	.18	.14	.20	.15	.11	.09
8.0	.33	.24	.17	.31	.22	.16	.26	.19	.14	.22	.16	.12	.18	.13	.10	.07
9.0	.30	.21	.15	.28	.20	.14	.24	.17	.12	.20	.14	.10	.17	.12	.08	.06
10.0	.27	.19	.13	.25	.18	.12	.22	.15	.11	.19	.13	.09	.15	.11	.07	.05



C Range: 0 - 360DEG
C Interval: 22.5DEG
Test Speed: HIGH
Temperature:25.3DEG
Operators:DAMIN
Test Date:2022-05-06

γ Range: 0 - 180DEG
γ Interval: 1.0DEG
Test System:EVERFINE GO-3000H_V1 SYSTEM V2.00.411
Humidity:65.0%
Test Distance:9.000m [K=1.0000]
Remarks:

WEC AND CCEC

Test:U:11.985V I:0.2272A P:1.8540W PF:0.6809 Freq:50.00Hz Lamp Flux:155.977x1 lm		
NAME: 487171-G4-2W-6000K	TYPE:	WEIGHT:
SPEC.:	DIM.:	SERIAL No.:
MFR.:	SUR.:	Shielding Angle:

pcc	80%			70%			50%			30%			10%			0
pw	50%	30%	10%	50%	30%	10%	50%	30%	10%	50%	30%	10%	50%	30%	10%	0
pfc	20%			20%			20%			20%			20%			0
RCR	RCR:Room Cavity Ratio						Wall Exitance Coefficients(WEC)									
0.0																
1.0	.468	.266	.084	.449	.256	.081	.415	.238	.076	.383	.221	.071	.354	.205	.066	
2.0	.383	.210	.064	.366	.202	.062	.335	.186	.058	.306	.172	.054	.279	.158	.050	
3.0	.330	.175	.053	.315	.168	.051	.286	.155	.047	.259	.142	.044	.235	.130	.040	
4.0	.290	.151	.044	.277	.145	.043	.250	.133	.040	.226	.121	.037	.204	.111	.034	
5.0	.260	.132	.038	.247	.127	.037	.223	.116	.034	.201	.106	.032	.180	.096	.029	
6.0	.235	.118	.034	.224	.113	.033	.202	.103	.030	.181	.094	.028	.162	.085	.025	
7.0	.215	.106	.030	.204	.102	.029	.184	.093	.027	.165	.085	.025	.147	.076	.022	
8.0	.198	.097	.027	.188	.093	.026	.169	.085	.024	.152	.077	.022	.135	.069	.020	
9.0	.183	.089	.025	.174	.085	.024	.157	.077	.022	.140	.070	.020	.125	.063	.018	
10.0	.170	.082	.023	.162	.078	.022	.146	.071	.020	.131	.065	.018	.116	.058	.017	

pcc	80%			70%			50%			30%			10%			0
pw	50%	30%	10%	50%	30%	10%	50%	30%	10%	50%	30%	10%	50%	30%	10%	0
pfc	20%			20%			20%			20%			20%			0
RCR	RCR:Room Cavity Ratio						Ceiling Cavity Exitance Coefficients(CCEC)									
0.0	.464	.464	.464	.396	.396	.396	.271	.271	.271	.155	.155	.155	.050	.050	.050	
1.0	.467	.430	.398	.399	.369	.342	.273	.254	.237	.157	.147	.138	.050	.047	.044	
2.0	.462	.409	.364	.396	.352	.315	.271	.244	.220	.156	.142	.129	.050	.046	.042	
3.0	.455	.394	.345	.390	.340	.299	.268	.236	.210	.155	.138	.124	.050	.045	.040	
4.0	.447	.382	.332	.384	.330	.289	.264	.230	.203	.153	.135	.120	.049	.044	.040	
5.0	.439	.373	.324	.377	.323	.282	.260	.225	.199	.151	.132	.118	.049	.043	.039	
6.0	.432	.366	.318	.371	.317	.277	.256	.222	.196	.148	.130	.116	.048	.043	.038	
7.0	.424	.359	.314	.365	.311	.273	.252	.218	.194	.146	.129	.115	.047	.042	.038	
8.0	.417	.354	.310	.359	.307	.271	.249	.216	.192	.145	.127	.114	.047	.042	.038	
9.0	.411	.349	.308	.354	.303	.269	.245	.213	.191	.143	.126	.114	.046	.041	.038	
10.0	.405	.345	.306	.349	.300	.267	.242	.211	.190	.141	.125	.113	.046	.041	.038	

C Range: 0 - 360DEG
C Interval: 22.5DEG
Test Speed: HIGH
Temperature:25.3DEG
Operators:DAMIN
Test Date:2022-05-06

γ Range: 0 - 180DEG
γ Interval: 1.0DEG
Test System:EVERFINE GO-3000H_V1 SYSTEM V2.00.411
Humidity:65.0%
Test Distance:9.000m [K=1.0000]
Remarks:

UGR(Unified Glare Rating) Table

Test:U:11.985V I:0.2272A P:1.8540W PF:0.6809 Freq:50.00Hz Lamp Flux:155.977x1 lm										
NAME: 487171-G4-2W-6000K					TYPE:			WEIGHT:		
SPEC.:					DIM.:			SERIAL No.:		
MFR.:					SUR.:			Shielding Angle:		
ceiling/cavity	0.7	0.7	0.5	0.5	0.3	0.7	0.7	0.5	0.5	0.3
walls	0.5	0.3	0.5	0.3	0.3	0.5	0.3	0.5	0.3	0.3
working plane	0.2	0.2	0.2	0.2	0.2	0.2	0.2	0.2	0.2	0.2
Room dimensions	Viewed crosswise					Viewed endwise				
x = 2H y = 2H	12.4	13.7	13.1	14.4	15.4	16.6	17.8	17.3	18.6	19.5
3H	14.8	16.0	15.6	16.8	17.8	19.9	21.1	20.7	21.9	22.9
4H	16.0	17.1	16.7	17.9	18.9	21.7	22.9	22.5	23.7	24.7
6H	17.1	18.2	17.9	19.0	20.0	23.7	24.8	24.5	25.6	26.6
8H	17.7	18.8	18.5	19.6	20.6	24.8	25.8	25.6	26.7	27.7
12H	18.4	19.4	19.2	20.2	21.3	26.1	27.1	26.9	27.9	28.9
4H 2H	15.1	16.2	15.8	17.0	18.0	17.4	18.5	18.2	19.3	20.3
3H	17.7	18.7	18.5	19.6	20.6	21.1	22.1	21.9	22.9	24.0
4H	19.0	20.0	19.9	20.8	21.9	23.1	24.0	23.9	24.9	25.9
6H	20.3	21.2	21.2	22.0	23.1	25.3	26.1	26.1	27.0	28.0
8H	21.0	21.7	21.8	22.6	23.7	26.4	27.2	27.3	28.1	29.2
12H	21.6	22.3	22.5	23.2	24.3	27.8	28.5	28.6	29.4	30.5
8H 4H	21.1	21.9	21.9	22.7	23.8	23.8	24.6	24.6	25.4	26.5
6H	22.9	23.5	23.7	24.4	25.5	26.3	27.0	27.2	27.9	29.0
8H	23.7	24.3	24.6	25.2	26.4	27.7	28.3	28.6	29.2	30.3
12H	24.6	25.1	25.5	26.0	27.2	29.3	29.8	30.2	30.7	31.9
12H 4H	21.7	22.4	22.5	23.3	24.4	23.9	24.6	24.7	25.5	26.6
6H	23.8	24.4	24.7	25.3	26.4	26.6	27.2	27.5	28.1	29.2
8H	24.9	25.4	25.8	26.4	27.5	28.1	28.7	29.0	29.6	30.7
Variations with the observer position at spacings:										
S = 1.0H	+ 0.1 / - 0.1					+ 0.1 / - 0.1				
1.5H	+ 0.2 / - 0.3					+ 0.2 / - 0.3				
2.0H	+ 0.3 / - 0.4					+ 0.3 / - 0.5				

CIE Pub.117, 156.0 lm Total Lamp Luminous Flux Corrected (8log(F/F0) = -6.5)
Area: 0.01 m2

C Range: 0 - 360DEG
C Interval: 22.5DEG
Test Speed: HIGH
Temperature:25.3DEG
Operators:DAMIN
Test Date:2022-05-06

γ Range: 0 - 180DEG
γ Interval: 1.0DEG
Test System:EVERFINE GO-3000H_V1 SYSTEM V2.00.411
Humidity:65.0%
Test Distance:9.000m [K=1.0000]
Remarks:

UTILIZATION FACTORS TABLE

Test:U:11.985V I:0.2272A P:1.8540W PF:0.6809 Freq:50.00Hz Lamp Flux:155.977x1 lm		
NAME: 487171-G4-2W-6000K	TYPE:	WEIGHT:
SPEC.:	DIM.:	SERIAL No.:
MFR.:	SUR.:	Shielding Angle:

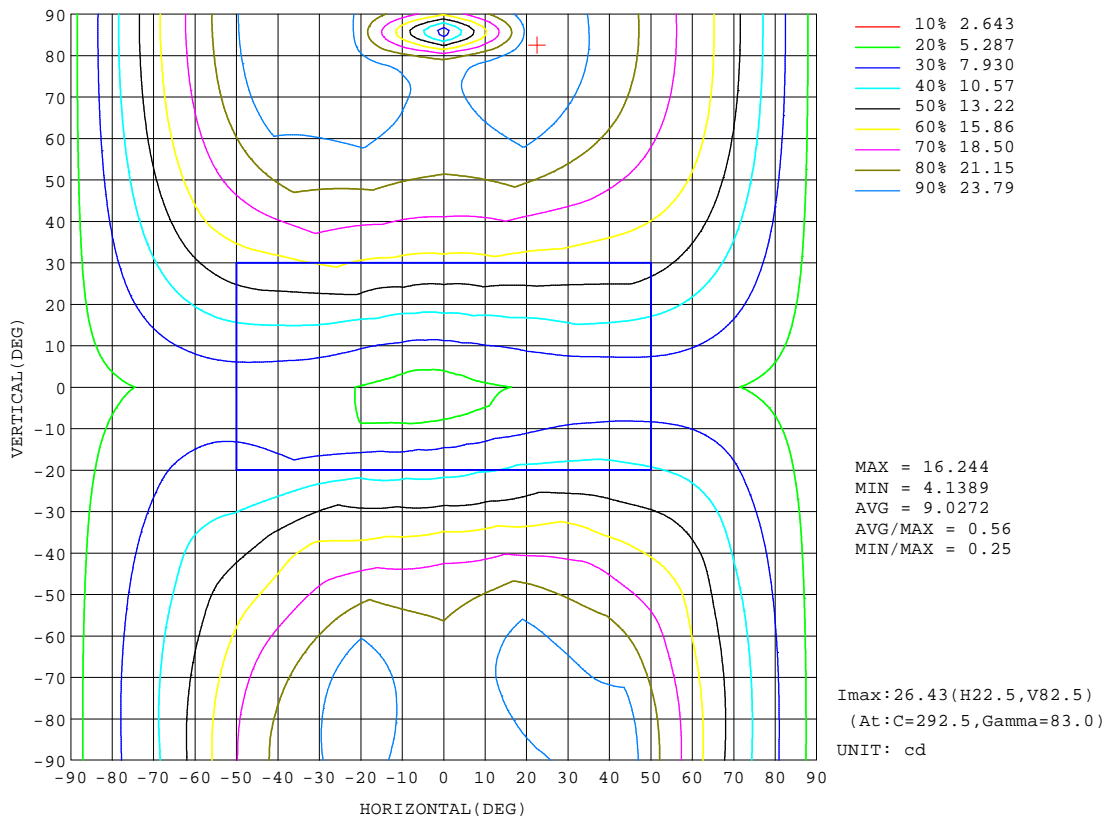
REFLECTANCE										
Ceiling	0.8	0.8	0.8	0.7	0.7	0.7	0.5	0.5	0.5	0
Walls	0.7	0.5	0.3	0.7	0.5	0.3	0.7	0.5	0.3	0
Working plane	0.2	0.2	0.2	0.2	0.2	0.2	0.2	0.2	0.2	0
ROOM INDEX	UTILIZATION FACTORS(PERCENT) $k(RI) \times RCR = 5$									
k = 0.60	36	22	14	34	22	14	32	21	14	7
0.80	44	29	20	42	28	20	39	26	19	10
1.00	51	36	26	49	35	25	44	35	24	14
1.25	58	43	32	55	41	31	50	38	29	17
1.50	64	48	38	60	46	36	54	42	34	21
2.00	72	57	47	67	55	45	60	49	41	26
2.50	77	64	53	72	60	51	64	54	46	30
3.00	81	69	59	76	65	56	67	58	51	33
4.00	87	76	68	82	72	64	72	64	58	38
5.00	91	81	73	85	77	69	75	68	62	41
ROOM INDEX	UF(total)									Direct
According to DIN EN 13032-2 2004			Suspended				SHRNOM = 1.25			

C Range: 0 - 360DEG
C Interval: 22.5DEG
Test Speed: HIGH
Temperature:25.3DEG
Operators:DAMIN
Test Date:2022-05-06

γ Range: 0 - 180DEG
 γ Interval: 1.0DEG
Test System:EVERFINE GO-3000H_V1 SYSTEM V2.00.411
Humidity:65.0%
Test Distance:9.000m [K=1.0000]
Remarks:

ISOCANDELA DIAGRAM

Test:U:11.985V I:0.2272A P:1.8540W PF:0.6809 Freq:50.00Hz Lamp Flux:155.977x1 lm		
NAME: 487171-G4-2W-6000K	TYPE:	WEIGHT:
SPEC.:	DIM.:	SERIAL No.:
MFR.:	SUR.:	Shielding Angle:



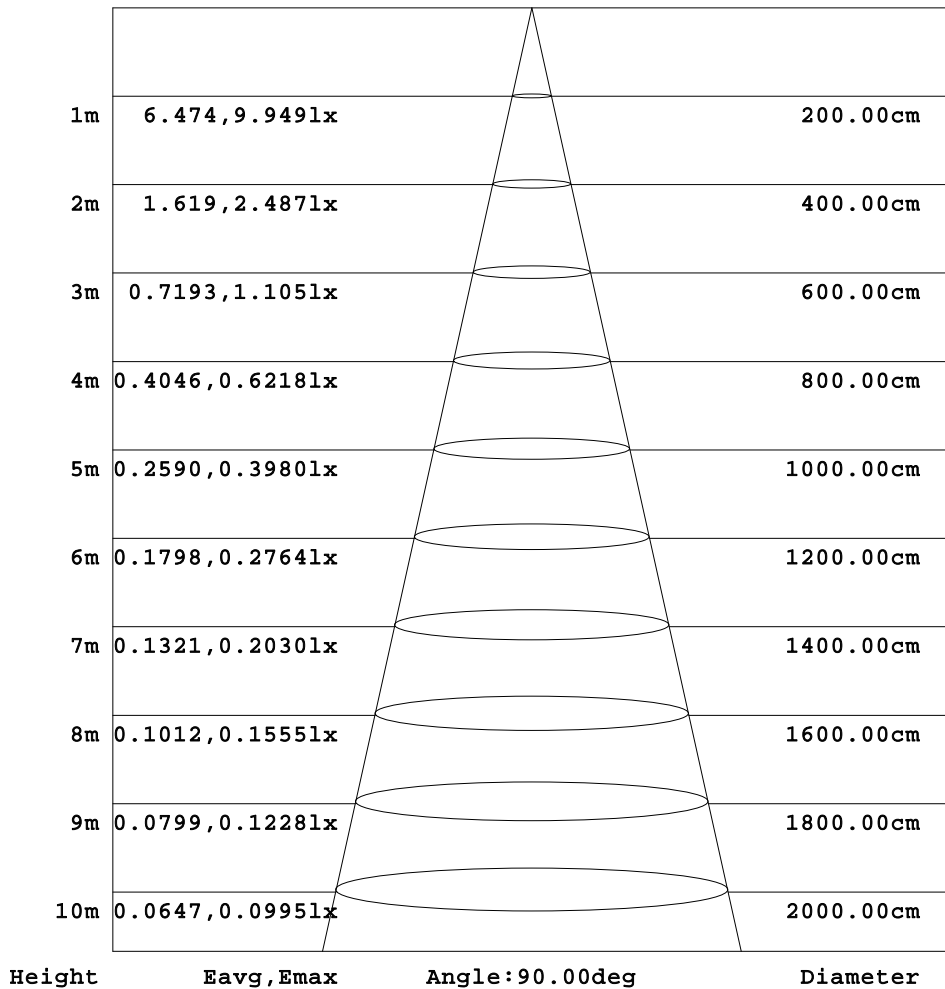
C Range: 0 - 360DEG
C Interval: 22.5DEG
Test Speed: HIGH
Temperature: 25.3DEG
Operators: DAMIN
Test Date: 2022-05-06

γ Range: 0 - 180DEG
γ Interval: 1.0DEG
Test System: EVERFINE GO-3000H_V1 SYSTEM V2.00.411
Humidity: 65.0%
Test Distance: 9.000m [K=1.0000]
Remarks:

AAI Figure

Test:U:11.985V I:0.2272A P:1.8540W PF:0.6809 Freq:50.00Hz Lamp Flux:155.977x1 lm		
NAME: 487171-G4-2W-6000K	TYPE:	WEIGHT:
SPEC.:	DIM.:	SERIAL No.:
MFR.:	SUR.:	Shielding Angle:

Flux out:20.34 lm



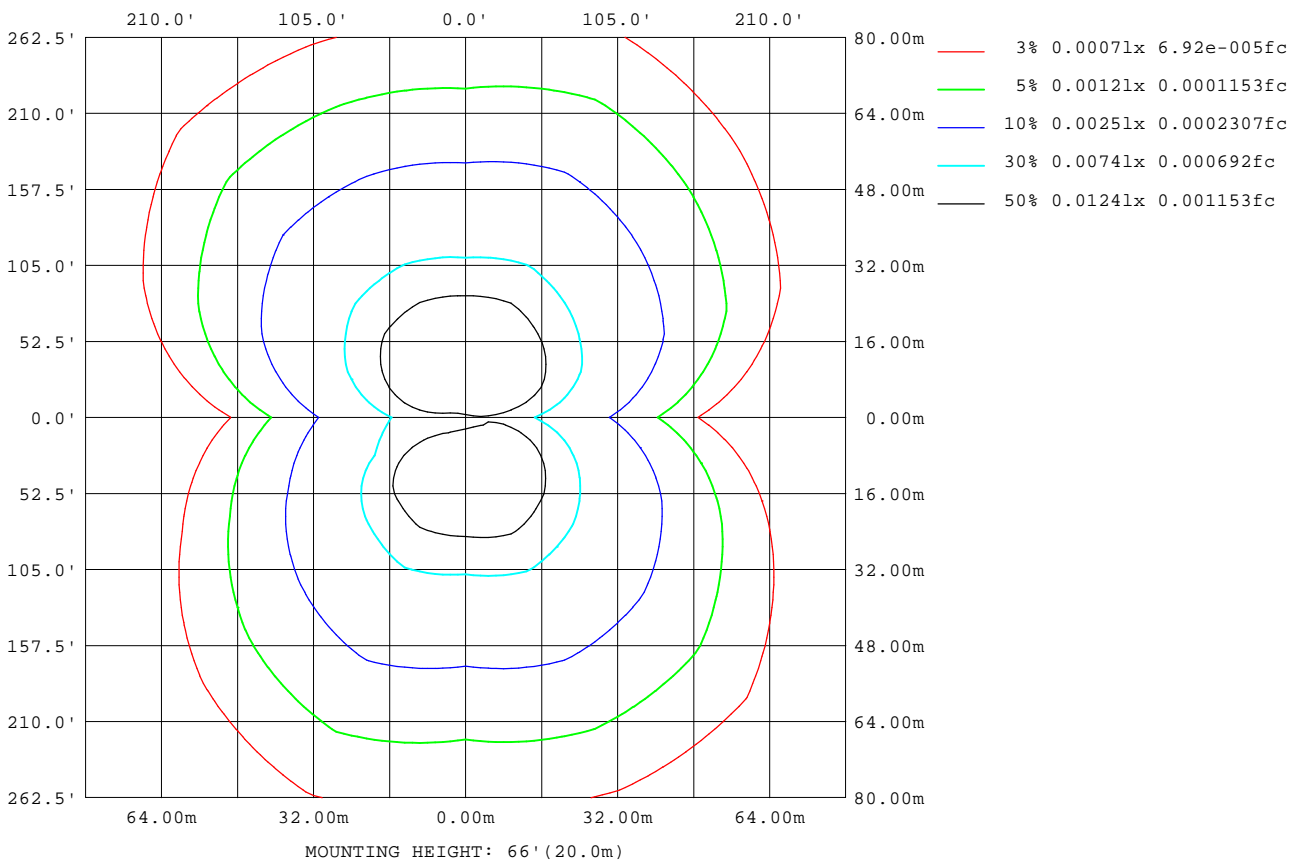
Note:The Curves indicate the illuminated area and the average illumination when the luminaire is at different distance.

C Range: 0 - 360DEG
C Interval: 22.5DEG
Test Speed: HIGH
Temperature:25.3DEG
Operators:DAMIN
Test Date:2022-05-06

γ Range: 0 - 180DEG
γ Interval: 1.0DEG
Test System:EVERFINE GO-3000H_V1 SYSTEM V2.00.411
Humidity:65.0%
Test Distance:9.000m [K=1.0000]
Remarks:

ISOLUX DIAGRAM

Test:U:11.985V I:0.2272A P:1.8540W PF:0.6809 Freq:50.00Hz Lamp Flux:155.977x1 lm		
NAME: 487171-G4-2W-6000K	TYPE:	WEIGHT:
SPEC.:	DIM.:	SERIAL No.:
MFR.:	SUR.:	Shielding Angle:



C Range: 0 - 360DEG
C Interval: 22.5DEG
Test Speed: HIGH
Temperature: 25.3DEG
Operators: DAMIN
Test Date: 2022-05-06

γ Range: 0 - 180DEG
γ Interval: 1.0DEG
Test System: EVERFINE GO-3000H_V1 SYSTEM V2.00.411
Humidity: 65.0%
Test Distance: 9.000m [K=1.0000]
Remarks:

LED Avg.L Report

Test:U:11.985V I:0.2272A P:1.8540W PF:0.6809 Freq:50.00Hz Lamp Flux:155.977x1 lm		
NAME: 487171-G4-2W-6000K	TYPE:	WEIGHT:
SPEC.:	DIM.:	SERIAL No.:
MFR.:	SUR.:	Shielding Angle:

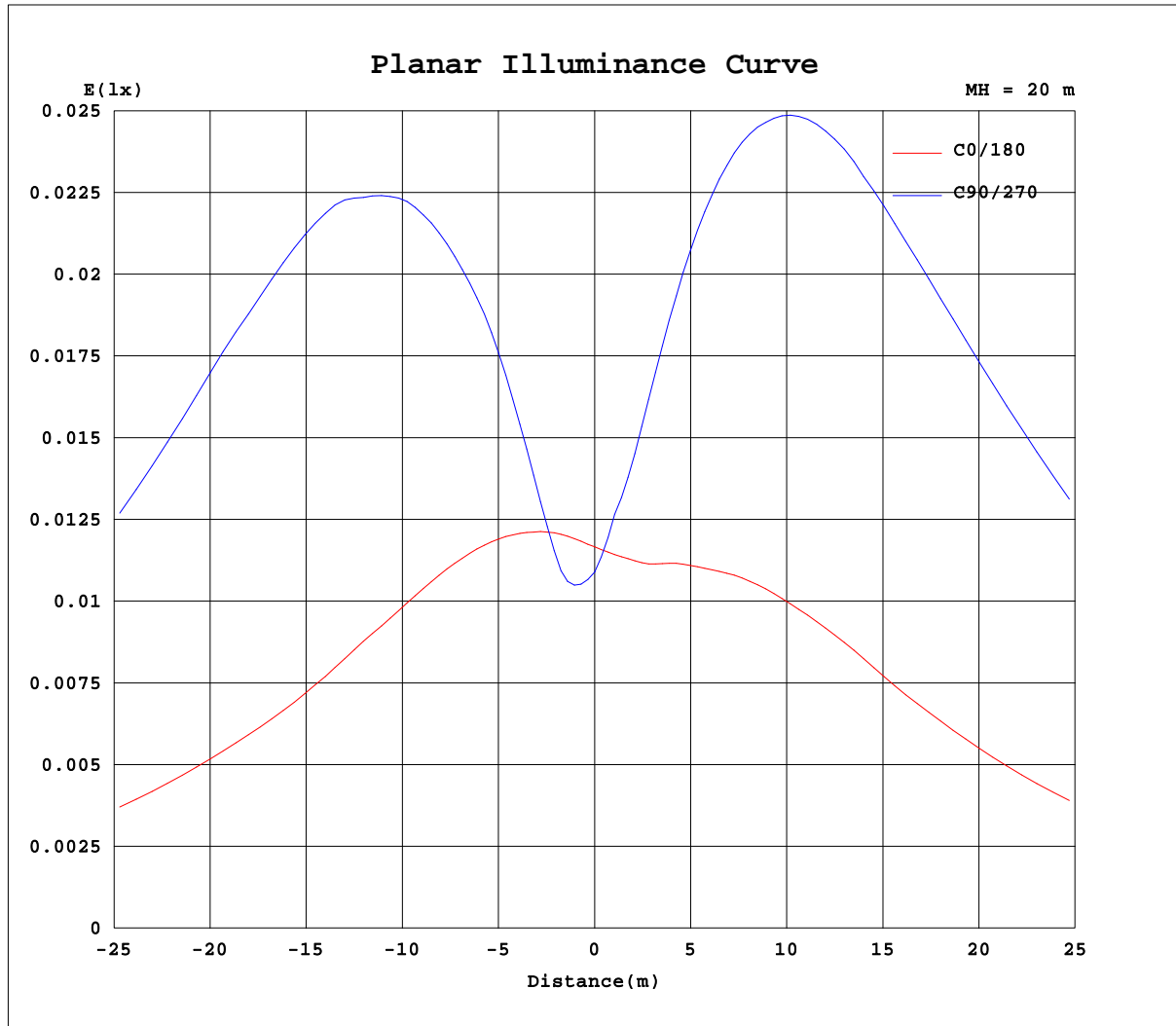
AvgL	cd/m2
L_0~180(65)av	1284
L_0~180(75)av	1897
L_0~180(85)av	5006
L_90~270(65)av	5352
L_90~270(75)av	8831
L_90~270(85)av	16978
L_45(65)av	4955
L_45(75)av	8699
L_45(85)av	26724

Standard: GB/T 29293-2012

C Range: 0 - 360DEG
C Interval: 22.5DEG
Test Speed: HIGH
Temperature:25.3DEG
Operators:DAMIN
Test Date:2022-05-06

γ Range: 0 - 180DEG
γ Interval: 1.0DEG
Test System:EVERFINE GO-3000H_V1 SYSTEM V2.00.411
Humidity:65.0%
Test Distance:9.000m [K=1.0000]
Remarks:

Planar Illuminance Curve



C Range: 0 - 360DEG
C Interval: 22.5DEG
Test Speed: HIGH
Temperature: 25.3DEG
Operators: DAMIN
Test Date: 2022-05-06

γ Range: 0 - 180DEG
 γ Interval: 1.0DEG
Test System: EVERFINE GO-3000H_V1 SYSTEM V2.00.411
Humidity: 65.0%
Test Distance: 9.000m [K=1.0000]
Remarks:

LUMINOUS DISTRIBUTION INTENSITY DATA

Test:U:11.985V I:0.2272A P:1.8540W PF:0.6809 Freq:50.00Hz Lamp Flux:155.977x1 lm		
NAME: 487171-G4-2W-6000K	TYPE:	WEIGHT:
SPEC.:	DIM.:	SERIAL No.:
MFR.:	SUR.:	Shielding Angle:

Table--1

UNIT: cd

C(DEG) γ (DEG)	0	22.5	45	67.5	90	112.5	135	157.5	180	202.5	225	247.5	270	292.5	315	337.5			
0	4.43	4.43	4.43	4.43	4.43	4.43	4.43	4.43	4.43	4.43	4.43	4.43	4.43	4.43	4.43	4.43			
5	4.63	4.55	4.53	4.58	4.49	4.31	4.17	4.18	4.34	4.62	5.20	5.51	5.67	5.64	5.46	5.10			
10	4.81	4.97	5.68	6.25	6.24	5.69	4.76	4.18	4.43	5.34	6.42	7.23	7.58	7.42	6.71	5.88			
15	4.98	5.77	7.24	8.16	8.21	7.54	6.05	4.47	4.66	6.24	8.02	9.19	9.63	9.38	8.24	6.66			
20	5.11	6.73	8.87	10.02	10.06	9.39	7.55	5.02	4.94	7.28	9.70	11.1	11.6	11.2	9.76	7.59			
25	5.19	7.76	10.5	11.8	12.0	11.2	9.13	5.74	5.22	8.42	11.4	13.2	13.5	13.0	11.2	8.54			
30	5.27	8.73	12.1	13.7	14.0	13.1	10.8	6.50	5.49	9.52	13.3	15.0	15.4	14.8	12.6	9.56			
35	5.32	9.66	13.7	15.9	16.2	14.9	12.5	7.27	5.70	10.5	15.0	16.8	17.0	16.5	13.9	10.5			
40	5.41	10.6	15.4	17.9	18.0	16.6	14.1	7.99	5.81	11.5	16.7	18.4	18.5	18.0	15.2	11.4			
45	5.56	11.4	17.0	19.9	19.5	18.4	15.4	8.70	5.92	12.4	18.2	20.0	19.9	19.6	16.4	12.3			
50	5.65	12.2	18.2	22.0	20.5	20.2	16.6	9.49	5.96	13.4	19.5	21.6	21.2	21.2	17.5	13.2			
55	5.65	13.0	19.5	23.5	21.3	21.9	17.3	10.3	5.92	14.4	20.9	23.1	22.1	22.8	18.6	13.9			
60	5.54	13.8	20.5	24.7	21.8	23.4	17.7	11.0	5.75	15.1	22.3	24.3	22.7	24.1	19.6	14.5			
65	5.35	14.4	21.6	25.4	22.0	24.6	18.4	11.5	5.51	15.8	23.4	25.0	23.2	25.2	20.4	15.0			
70	5.09	14.6	22.7	25.6	22.2	25.4	19.1	11.7	5.25	16.1	24.3	25.2	23.5	26.0	21.0	15.3			
75	4.82	14.0	23.6	25.3	22.3	25.7	19.8	11.4	4.99	16.3	25.1	25.2	23.4	26.5	21.5	15.4			
80	4.55	13.8	24.4	24.9	22.3	25.8	20.3	11.3	4.70	16.3	25.6	25.1	19.9	26.7	21.8	15.4			
85	4.28	13.5	24.8	24.5	22.3	25.6	20.6	11.1	4.45	16.3	25.8	24.8	7.26	26.7	21.9	15.3			
90	4.03	13.2	25.0	24.1	22.2	25.4	20.7	10.8	4.23	16.2	25.9	24.5	16.7	26.5	21.9	15.2			
95	3.84	13.0	25.0	23.7	22.0	25.2	20.6	10.6	4.09	15.9	25.8	24.3	23.2	26.2	21.7	14.9			
100	3.70	12.6	24.7	23.4	21.6	24.8	20.5	10.4	4.00	15.7	25.4	24.1	23.1	25.8	21.3	14.6			
105	3.60	11.8	24.2	22.9	10.08	24.5	20.1	9.69	3.95	15.2	24.8	23.6	22.3	25.2	20.8	14.1			
110	3.48	1.80	23.2	22.4	0.14	24.0	19.6	1.50	3.92	6.10	24.0	22.9	0.29	24.6	20.0	6.87			
115	3.45	0.07	21.8	21.6	0.12	23.4	18.7	0.13	3.84	0.14	22.9	22.3	0.15	23.9	19.0	0.11			
120	3.43	0.06	15.1	20.7	0.11	22.5	13.5	0.10	3.82	0.12	19.1	21.4	0.16	12.1	16.4	0.11			
125	3.41	0.05	1.63	18.0	0.10	19.8	1.53	0.08	3.83	0.10	5.69	19.8	0.13	19.7	6.06	0.10			
130	3.38	0.05	0.07	7.34	0.09	7.26	0.10	0.07	3.86	0.08	0.11	11.8	0.11	11.8	0.19	0.10			
135	3.34	0.06	0.07	0.09	0.08	0.10	0.09	0.07	3.94	0.08	0.09	1.22	0.09	1.37	0.18	0.11			
140	3.25	0.06	0.06	0.08	0.08	0.08	0.08	0.07	4.04	0.08	0.08	0.08	0.07	0.15	0.18	0.11			
145	3.11	0.06	0.06	0.07	0.07	0.07	0.08	0.07	4.09	0.08	0.08	0.07	0.06	0.13	0.22	0.11			
150	2.78	0.06	0.05	0.06	0.06	0.06	0.07	0.07	3.99	0.07	0.07	0.06	0.05	0.08	0.14	0.10			
155	2.22	0.06	0.05	0.04	0.05	0.06	0.06	0.07	3.62	0.07	0.06	0.06	0.04	0.07	0.11	0.08			
160	1.37	0.27	0.04	0.04	0.05	0.06	0.05	0.13	2.85	0.06	0.05	0.05	0.04	0.06	0.06	0.06			
165	0.35	0.12	0.03	0.04	0.04	0.07	0.04	0.58	1.82	0.05	0.05	0.04	0.04	0.06	0.06	0.05			
170	0.05	0.03	0.03	0.04	0.04	0.07	0.04	0.04	0.05	0.05	0.05	0.04	0.04	0.05	0.05	0.05			
175	0.04	0.03	0.03	0.04	0.04	0.06	0.05	0.04	0.04	0.04	0.04	0.03	0.03	0.05	0.05	0.05			
180	0.04	0.04	0.04	0.04	0.04	0.06	0.05	0.04	0.04	0.04	0.04	0.04	0.04	0.07	0.04	0.04			

C Range: 0 - 360DEG
C Interval: 22.5DEG
Test Speed: HIGH
Temperature:25.3DEG
Operators:DAMIN
Test Date:2022-05-06

γ Range: 0 - 180DEG
γ Interval: 1.0DEG
Test System:EVERFINE GO-3000H_V1 SYSTEM V2.00.411
Humidity:65.0%
Test Distance:9.000m [K=1.0000]
Remarks: