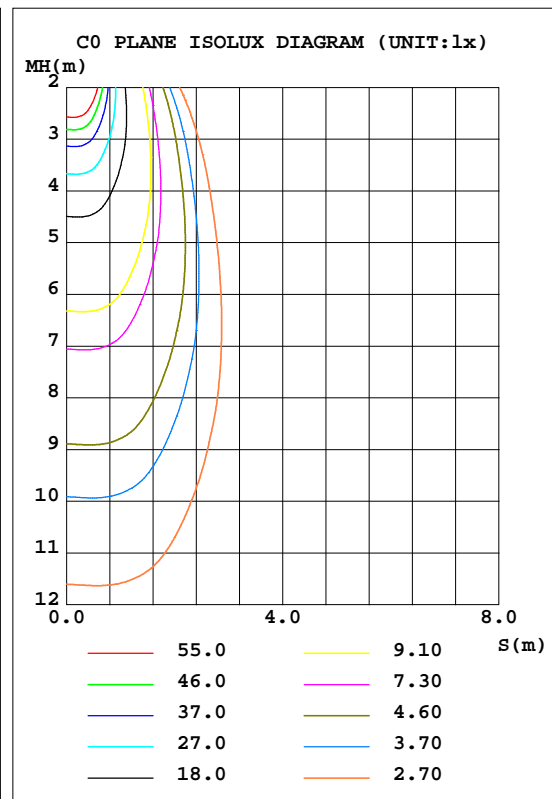
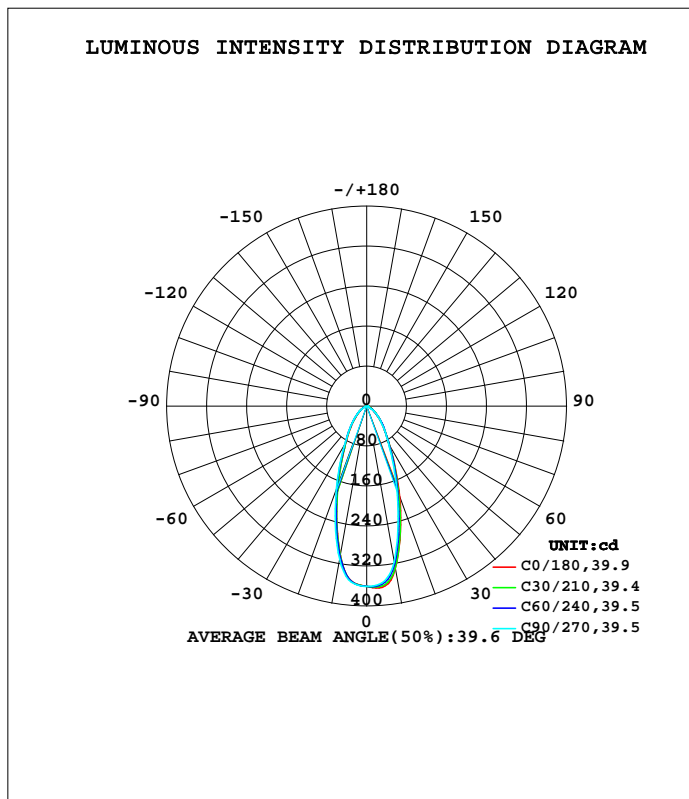


LUMINAIRE PHOTOMETRIC TEST REPORT

Test:U:11.990V I:0.2961A P:2.4001W PF:0.6760 Freq:60.00Hz Lamp Flux:250.168x1 lm		
NAME: 486708-MR16-2W-3000K-40°	TYPE:	WEIGHT:
SPEC.:	DIM.:	SERIAL No.:
MFR.:	SUR.:35mm	Shielding Angle:

DATA OF LAMP		PHOTOMETRIC DATA Eff: 104.23 lm/W			
MODEL		I _{max} (cd)	364.4	S/MH(C0/180)	0.62
NOMINAL POWER(W)	--	LOR(%)	100.0	S/MH(C90/270)	0.63
RATED VOLTAGE(V)	--	TOTAL FLUX(lm)	250.17	η UP,DN(C0-180)	0.0,50.2
NOMINAL FLUX(lm)	250.168	CIE CLASS	DIRECT	η UP,DN(C180-360)	0.0,49.8
LAMPS INSIDE	1	η up(%)	0.0	CIBSE SHR NOM	0.50
TEST VOLTAGE(V)	--	η down(%)	100.0	CIBSE SHR MAX	0.70



C Range: 0 - 360DEG
 C Interval: 15.0DEG
 Test Speed: HIGH
 Temperature:25.3DEG
 Operators:DAMIN
 Test Date:2022-05-29

γ Range: 0 - 90DEG
 γ Interval: 1.0DEG
 Test System:EVERFINE GO-3000H_V1 SYSTEM V2.00.411
 Humidity:65.0%
 Test Distance:9.000m [K=1.0000]
 Remarks:

ZONAL FLUX DIAGRAM

ZONAL FLUX DIAGRAM:

γ	C0	C45	C90	C135	C180	C225	C270	C315	γ	Φ zone	Φ total	%lum,lamp
10	330.6	328.2	317.0	302.5	304.1	302.7	311.8	323.9	0- 10	32.70	32.70	13.1,13.1
20	193.8	188.3	176.6	172.5	169.6	167.5	178.4	188.5	10- 20	67.63	100.3	40.1,40.1
30	94.28	94.27	88.90	84.61	82.77	83.66	87.82	90.34	20- 30	58.30	158.6	63.4,63.4
40	49.16	51.09	49.49	44.82	44.23	45.93	47.78	47.71	30- 40	40.84	199.5	79.7,79.7
50	25.28	26.64	26.15	22.78	22.30	24.27	24.71	24.93	40- 50	26.96	226.4	90.5,90.5
60	12.30	12.93	7.802	10.77	10.63	11.63	8.577	12.09	50- 60	15.37	241.8	96.7,96.7
70	4.908	3.255	1.801	2.956	3.672	2.946	1.935	4.076	60- 70	6.306	248.1	99.2,99.2
80	1.576	0.4254	0.0373	0.2702	1.338	0.2741	0.0134	0.7527	70- 80	1.851	250.0	99.9,99.9
90	0	0	0	0	0	0	0	0	80- 90	0.2029	250.2	100,100
100									90-100			
110									100-110			
120									110-120			
130									120-130			
140									130-140			
150									140-150			
160									150-160			
170									160-170			
180									170-180			
DEG	LUMINOUS INTENSITY:cd									UNIT:lm		

Conical surface Flux(90deg): 214.56 lm

%lum = 85.8%
%lamp = 85.8%

Conical surface Flux(120deg): 241.81 lm

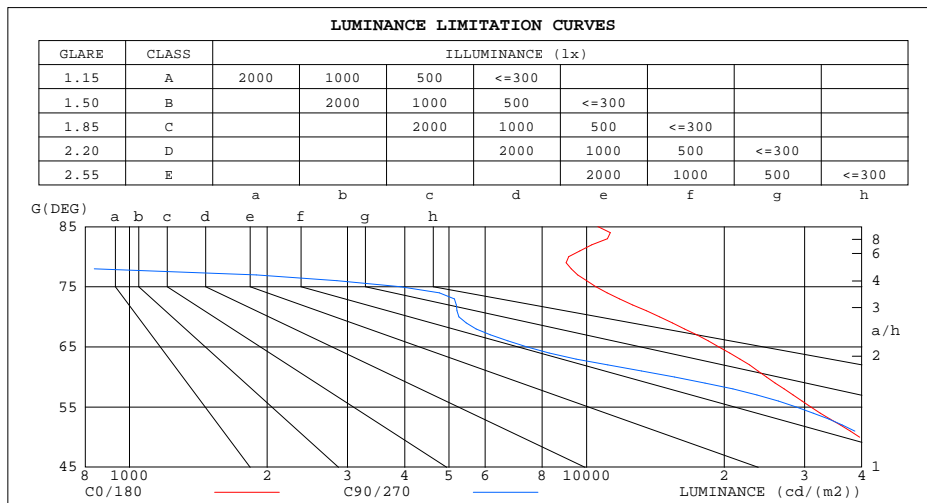
%lum = 96.7%
%lamp = 96.7%

C Range: 0 - 360DEG
C Interval: 15.0DEG
Test Speed: HIGH
Temperature:25.3DEG
Operators:DAMIN
Test Date:2022-05-29

γ Range: 0 - 90DEG
 γ Interval: 1.0DEG
Test System:EVERFINE GO-3000H_V1 SYSTEM V2.00.411
Humidity:65.0%
Test Distance:9.000m [K=1.0000]
Remarks:

LUMINANCE LIMITATION CURVES

Test:U:11.990V I:0.2961A P:2.4001W PF:0.6760 Freq:60.00Hz Lamp Flux:250.168x1 lm		
NAME: 486708-MR16-2W-3000K-40°	TYPE:	WEIGHT:
SPEC.:	DIM.:	SERIAL No.:
MFR.:	SUR.:35mm	Shielding Angle:



LUMINANCE cd/(m2)		
G(DEG)	C0/180	C90/270
85	10592	1
80	9141	214
75	10485	3922
70	14450	5258
65	19474	7414
60	24774	15582
55	30957	28816
50	39600	40622
45	50667	51666

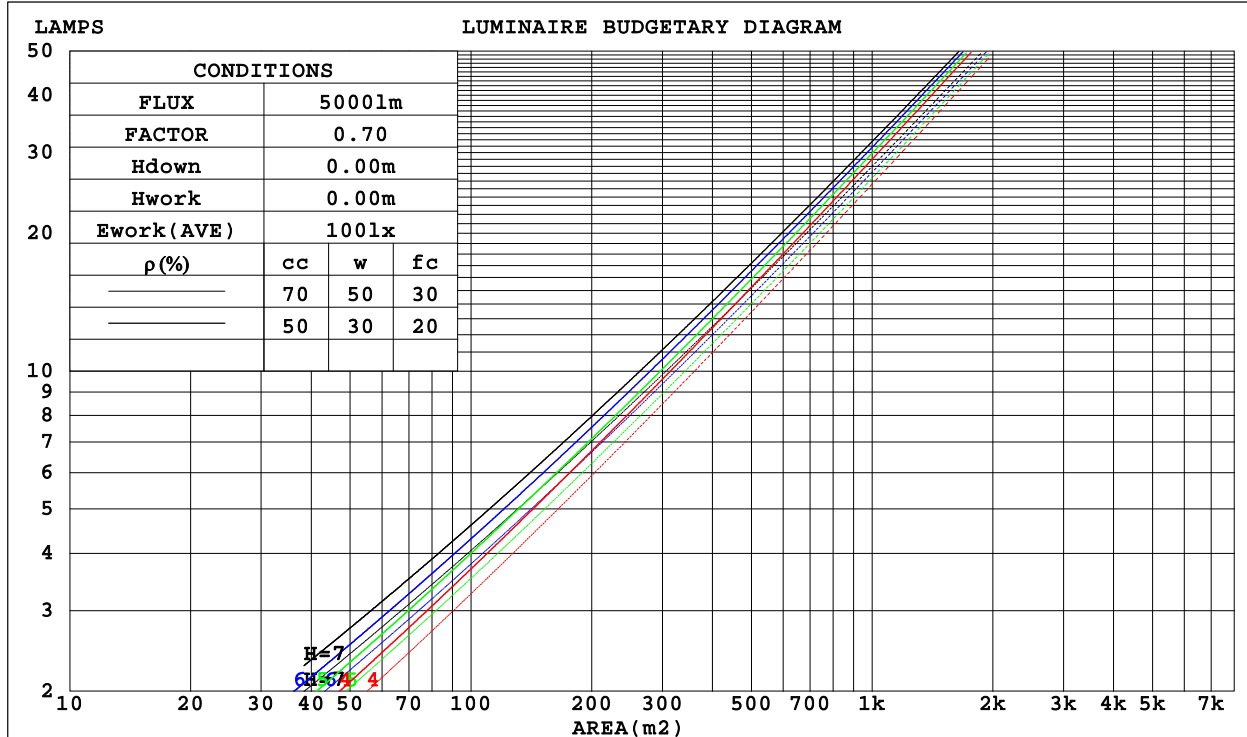
C Range: 0 - 360DEG
 C Interval: 15.0DEG
 Test Speed: HIGH
 Temperature:25.3DEG
 Operators:DAMIN
 Test Date:2022-05-29

γ Range: 0 - 90DEG
 γ Interval: 1.0DEG
 Test System:EVERFINE GO-3000H_V1 SYSTEM V2.00.411
 Humidity:65.0%
 Test Distance:9.000m [K=1.0000]
 Remarks:

CU AND LUMINAIRE BUDGETARY ESTIMATE DIAGRAM

Test:U:11.990V I:0.2961A P:2.4001W PF:0.6760 Freq:60.00Hz Lamp Flux:250.168x1 lm		
NAME: 486708-MR16-2W-3000K-40°	TYPE:	WEIGHT:
SPEC.:	DIM.:	SERIAL No.:
MFR.:	SUR.:35mm	Shielding Angle:

ρ_{cc}	80%			70%			50%			30%			10%			0
ρ_w	50%	30%	10%	50%	30%	10%	50%	30%	10%	50%	30%	10%	50%	30%	10%	0
ρ_{fc}	20%			20%			20%			20%			20%			0
RCR	RCR:Room Cavity Ratio						Coefficients of Utilization(CU)									
0.0	1.19	1.19	1.19	1.16	1.16	1.16	1.11	1.11	1.11	1.06	1.06	1.06	1.02	1.02	1.02	1.00
1.0	1.10	1.07	1.05	1.08	1.05	1.03	1.04	1.02	.00	.00	.98	.97	.96	.95	.94	.92
2.0	1.01	.97	.93	.00	.95	.92	.96	.93	.90	.93	.90	.88	.90	.88	.86	.85
3.0	.94	.88	.84	.92	.87	.83	.90	.85	.82	.87	.84	.81	.85	.82	.79	.78
4.0	.87	.81	.76	.86	.80	.76	.84	.79	.75	.81	.77	.74	.80	.76	.73	.72
5.0	.81	.75	.70	.80	.74	.70	.78	.73	.69	.76	.72	.68	.75	.71	.68	.66
6.0	.76	.69	.65	.75	.69	.65	.73	.68	.64	.72	.67	.64	.71	.66	.63	.62
7.0	.71	.65	.60	.70	.64	.60	.69	.64	.60	.68	.63	.59	.67	.62	.59	.58
8.0	.67	.61	.56	.66	.60	.56	.65	.60	.56	.64	.59	.56	.63	.59	.55	.54
9.0	.63	.57	.53	.63	.57	.53	.62	.56	.53	.61	.56	.52	.60	.56	.52	.51
10.0	.60	.54	.50	.60	.54	.50	.59	.53	.50	.58	.53	.50	.57	.53	.49	.48



C Range: 0 - 360DEG
 C Interval: 15.0DEG
 Test Speed: HIGH
 Temperature:25.3DEG
 Operators:DAMIN
 Test Date:2022-05-29

γ Range: 0 - 90DEG
 γ Interval: 1.0DEG
 Test System:EVERFINE GO-3000H_V1 SYSTEM V2.00.411
 Humidity:65.0%
 Test Distance:9.000m [K=1.0000]
 Remarks:

WEC AND CCEC

Test:U:11.990V I:0.2961A P:2.4001W PF:0.6760 Freq:60.00Hz Lamp Flux:250.168x1 lm		
NAME: 486708-MR16-2W-3000K-40°	TYPE:	WEIGHT:
SPEC.:	DIM.:	SERIAL No.:
MFR.:	SUR.:35mm	Shielding Angle:

pcc	80%			70%			50%			30%			10%			0
pw	50%	30%	10%	50%	30%	10%	50%	30%	10%	50%	30%	10%	50%	30%	10%	0
pfc	20%			20%			20%			20%			20%			0
RCR	RCR:Room Cavity Ratio						Wall Exitance Coefficients(WEC)									
0.0																
1.0	.195	.111	.035	.188	.107	.034	.175	.101	.032	.164	.094	.030	.153	.089	.029	
2.0	.188	.103	.032	.182	.100	.031	.171	.095	.030	.161	.091	.028	.152	.086	.027	
3.0	.178	.095	.028	.174	.093	.028	.164	.089	.027	.156	.085	.026	.148	.082	.025	
4.0	.169	.088	.026	.165	.086	.025	.157	.083	.025	.149	.080	.024	.142	.077	.024	
5.0	.160	.082	.024	.156	.080	.023	.149	.078	.023	.143	.075	.022	.137	.073	.022	
6.0	.152	.076	.022	.148	.075	.022	.142	.073	.021	.136	.071	.021	.131	.069	.020	
7.0	.144	.071	.020	.141	.070	.020	.135	.068	.020	.130	.067	.019	.125	.065	.019	
8.0	.137	.067	.019	.134	.066	.019	.129	.065	.018	.125	.063	.018	.120	.062	.018	
9.0	.130	.063	.018	.128	.062	.017	.123	.061	.017	.119	.060	.017	.115	.059	.017	
10.0	.124	.059	.016	.122	.059	.016	.118	.058	.016	.114	.057	.016	.111	.056	.016	

pcc	80%			70%			50%			30%			10%			0
pw	50%	30%	10%	50%	30%	10%	50%	30%	10%	50%	30%	10%	50%	30%	10%	0
pfc	20%			20%			20%			20%			20%			0
RCR	RCR:Room Cavity Ratio						Ceiling Cavity Exitance Coefficients(CCEC)									
0.0	.190	.190	.190	.163	.163	.163	.111	.111	.111	.064	.064	.064	.020	.020	.020	
1.0	.172	.157	.143	.147	.135	.123	.101	.093	.085	.058	.054	.050	.019	.017	.016	
2.0	.158	.132	.111	.136	.114	.096	.093	.079	.067	.054	.046	.039	.017	.015	.013	
3.0	.147	.114	.087	.126	.098	.076	.086	.068	.053	.050	.040	.031	.016	.013	.010	
4.0	.137	.099	.070	.118	.086	.061	.081	.060	.043	.047	.035	.025	.015	.011	.008	
5.0	.129	.088	.058	.110	.076	.050	.076	.053	.035	.044	.031	.021	.014	.010	.007	
6.0	.121	.079	.048	.104	.068	.042	.072	.048	.030	.042	.028	.018	.013	.009	.006	
7.0	.115	.071	.041	.099	.062	.035	.068	.043	.025	.040	.025	.015	.013	.008	.005	
8.0	.109	.065	.035	.094	.056	.030	.065	.040	.022	.038	.023	.013	.012	.008	.004	
9.0	.103	.060	.030	.089	.052	.027	.062	.036	.019	.036	.022	.011	.012	.007	.004	
10.0	.099	.055	.027	.085	.048	.023	.059	.034	.017	.034	.020	.010	.011	.007	.003	

C Range: 0 - 360DEG
 C Interval: 15.0DEG
 Test Speed: HIGH
 Temperature:25.3DEG
 Operators:DAMIN
 Test Date:2022-05-29

γ Range: 0 - 90DEG
 γ Interval: 1.0DEG
 Test System:EVERFINE GO-3000H_V1 SYSTEM V2.00.411
 Humidity:65.0%
 Test Distance:9.000m [K=1.0000]
 Remarks:

UGR(Unified Glare Rating) Table

Test:U:11.990V I:0.2961A P:2.4001W PF:0.6760 Freq:60.00Hz Lamp Flux:250.168x1 lm										
NAME: 486708-MR16-2W-3000K-40°					TYPE:			WEIGHT:		
SPEC.:					DIM.:			SERIAL No.:		
MFR.:					SUR.:35mm			Shielding Angle:		
ceiling/cavity	0.7	0.7	0.5	0.5	0.3	0.7	0.7	0.5	0.5	0.3
walls	0.5	0.3	0.5	0.3	0.3	0.5	0.3	0.5	0.3	0.3
working plane	0.2	0.2	0.2	0.2	0.2	0.2	0.2	0.2	0.2	0.2
Room dimensions	Viewed crosswise					Viewed endwise				
x = 2H y = 2H	22.9	24.0	23.2	24.2	24.3	22.4	23.4	22.6	23.6	23.8
3H	23.3	24.2	23.6	24.4	24.6	22.3	23.2	22.6	23.4	23.7
4H	23.3	24.2	23.6	24.5	24.7	22.2	23.1	22.5	23.4	23.6
6H	23.3	24.2	23.6	24.4	24.7	22.1	23.0	22.4	23.2	23.5
8H	23.4	24.2	23.7	24.4	24.7	22.1	22.9	22.4	23.2	23.4
12H	23.4	24.1	23.7	24.4	24.7	22.0	22.8	22.4	23.1	23.4
4H 2H	23.0	23.9	23.3	24.2	24.4	22.5	23.4	22.8	23.6	23.9
3H	23.5	24.3	23.8	24.5	24.8	22.4	23.2	22.8	23.5	23.8
4H	23.6	24.3	23.9	24.6	24.9	22.4	23.1	22.7	23.4	23.7
6H	23.6	24.2	24.0	24.6	24.9	22.3	22.9	22.7	23.3	23.6
8H	23.6	24.2	24.0	24.6	24.9	22.3	22.8	22.6	23.2	23.6
12H	23.7	24.2	24.1	24.6	25.0	22.2	22.7	22.6	23.1	23.5
8H 4H	23.5	24.0	23.9	24.4	24.8	22.3	22.9	22.7	23.3	23.6
6H	23.5	24.0	24.0	24.4	24.8	22.2	22.7	22.7	23.1	23.5
8H	23.6	24.0	24.0	24.4	24.9	22.2	22.6	22.6	23.0	23.5
12H	23.6	24.0	24.1	24.4	24.9	22.1	22.5	22.6	22.9	23.4
12H 4H	23.4	23.9	23.8	24.3	24.7	22.3	22.8	22.7	23.2	23.6
6H	23.5	23.9	23.9	24.3	24.8	22.2	22.6	22.6	23.0	23.5
8H	23.5	23.9	24.0	24.3	24.8	22.1	22.5	22.6	22.9	23.4
Variations with the observer position at spacings:										
S = 1.0H	+ 0.9 / - 1.4					+ 1.4 / - 2.1				
1.5H	+ 1.0 / - 0.9					+ 1.1 / - 0.9				
2.0H	+ 1.7 / - 1.6					+ 2.7 / - 4.2				

CIE Pub.117, 250.2 lm Total Lamp Luminous Flux Corrected (8log(F/F0) = -4.8)
Area: 0.001 m2

C Range: 0 - 360DEG
C Interval: 15.0DEG
Test Speed: HIGH
Temperature:25.3DEG
Operators:DAMIN
Test Date:2022-05-29

γ Range: 0 - 90DEG
γ Interval: 1.0DEG
Test System:EVERFINE GO-3000H_V1 SYSTEM V2.00.411
Humidity:65.0%
Test Distance:9.000m [K=1.0000]
Remarks:

UTILIZATION FACTORS TABLE

Test:U:11.990V I:0.2961A P:2.4001W PF:0.6760 Freq:60.00Hz Lamp Flux:250.168x1 lm		
NAME: 486708-MR16-2W-3000K-40°	TYPE:	WEIGHT:
SPEC.:	DIM.:	SERIAL No.:
MFR.:	SUR.:35mm	Shielding Angle:

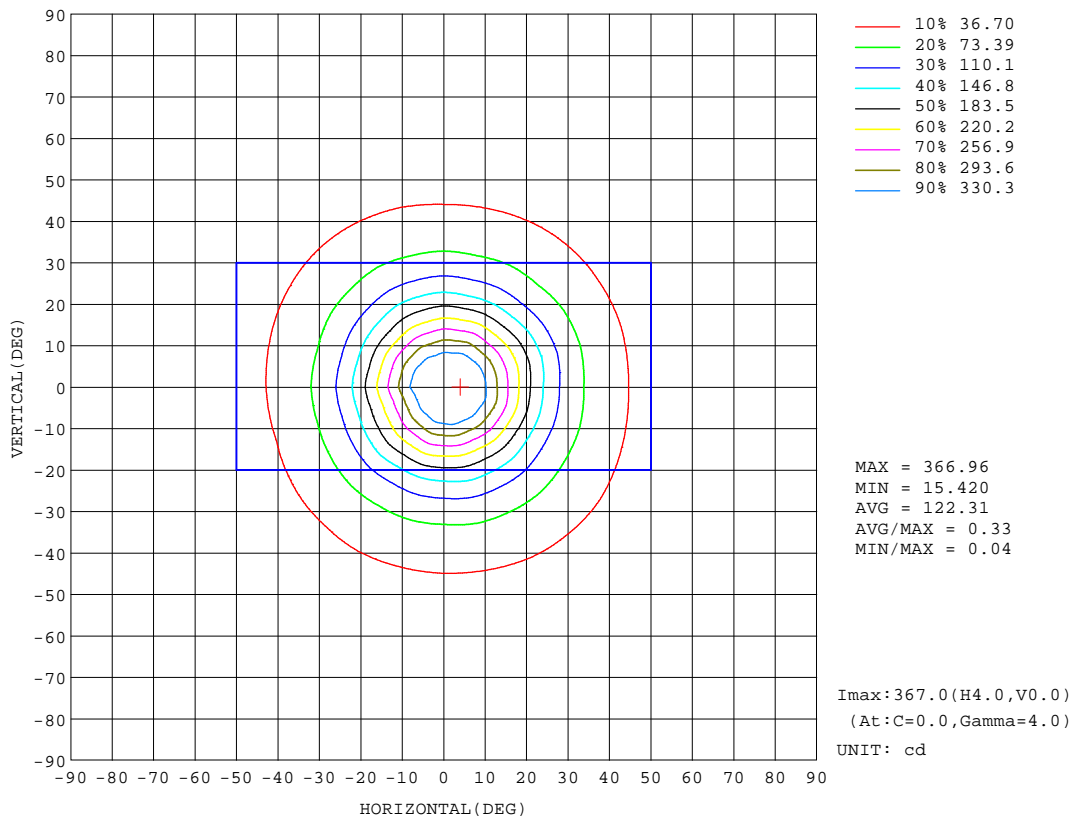
REFLECTANCE										
Ceiling	0.8	0.8	0.8	0.7	0.7	0.7	0.5	0.5	0.5	0
Walls	0.7	0.5	0.3	0.7	0.5	0.3	0.7	0.5	0.3	0
Working plane	0.2	0.2	0.2	0.2	0.2	0.2	0.2	0.2	0.2	0
ROOM INDEX	UTILIZATION FACTORS(PERCENT) k(RI) x RCR = 5									
k = 0.60	79	71	66	78	71	66	77	70	66	61
0.80	87	80	75	86	79	75	85	79	75	70
1.00	93	86	82	92	86	81	91	86	81	76
1.25	98	92	88	97	91	87	95	90	86	81
1.50	102	96	92	100	95	91	98	93	90	85
2.00	106	100	97	104	99	96	101	97	94	89
2.50	108	103	99	106	102	99	103	99	97	90
3.00	110	106	102	108	104	101	104	101	99	92
4.00	112	109	106	110	107	105	106	104	102	94
5.00	114	111	108	111	109	107	107	105	104	96
ROOM INDEX	UF(total)									Direct
According to DIN EN 13032-2 2004			Suspended				SHRNOM = 1.25			

C Range: 0 - 360DEG
 C Interval: 15.0DEG
 Test Speed: HIGH
 Temperature:25.3DEG
 Operators:DAMIN
 Test Date:2022-05-29

γ Range: 0 - 90DEG
 γ Interval: 1.0DEG
 Test System:EVERFINE GO-3000H_V1 SYSTEM V2.00.411
 Humidity:65.0%
 Test Distance:9.000m [K=1.0000]
 Remarks:

ISOCANDELA DIAGRAM

Test:U:11.990V I:0.2961A P:2.4001W PF:0.6760 Freq:60.00Hz Lamp Flux:250.168x1 lm		
NAME: 486708-MR16-2W-3000K-40°	TYPE:	WEIGHT:
SPEC.:	DIM.:	SERIAL No.:
MFR.:	SUR.:35mm	Shielding Angle:



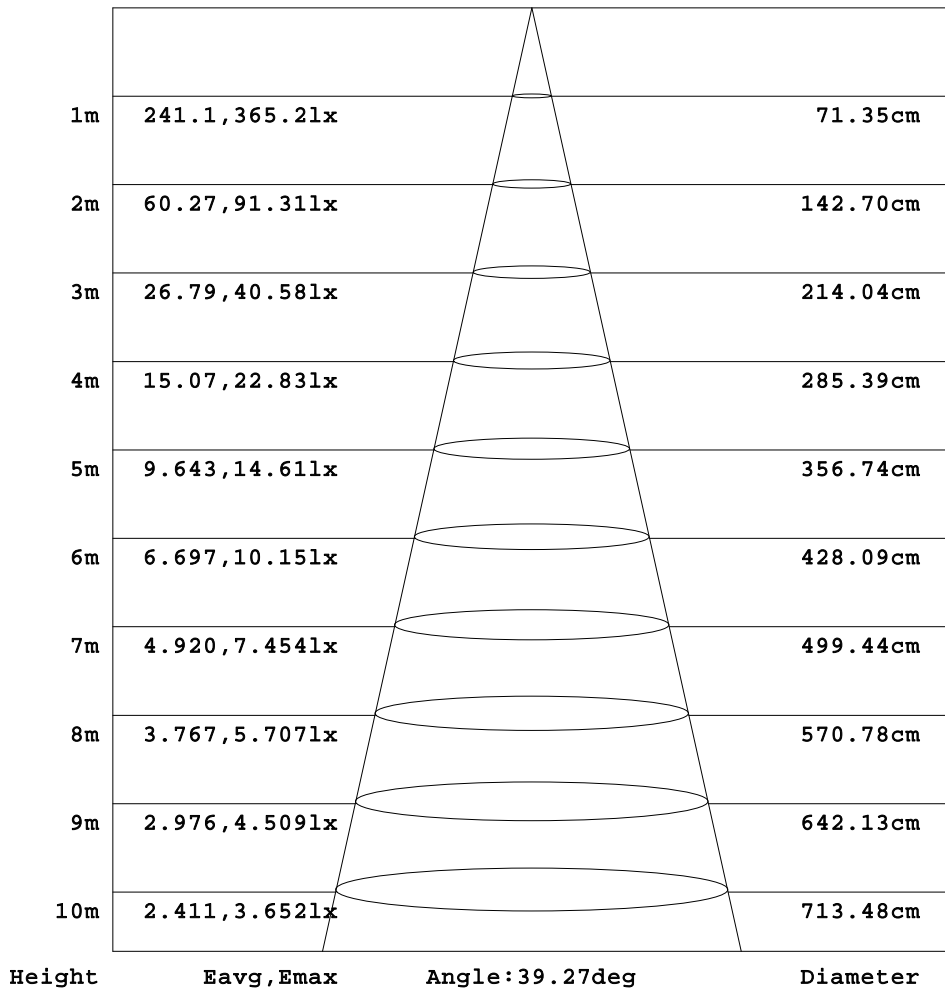
C Range: 0 - 360DEG
 C Interval: 15.0DEG
 Test Speed: HIGH
 Temperature:25.3DEG
 Operators:DAMIN
 Test Date:2022-05-29

γ Range: 0 - 90DEG
 γ Interval: 1.0DEG
 Test System:EVERFINE GO-3000H_V1 SYSTEM V2.00.411
 Humidity:65.0%
 Test Distance:9.000m [K=1.0000]
 Remarks:

AAI Figure

Test:U:11.990V I:0.2961A P:2.4001W PF:0.6760 Freq:60.00Hz Lamp Flux:250.168x1 lm		
NAME: 486708-MR16-2W-3000K-40°	TYPE:	WEIGHT:
SPEC.:	DIM.:	SERIAL No.:
MFR.:	SUR.:35mm	Shielding Angle:

Flux out:100.3 lm



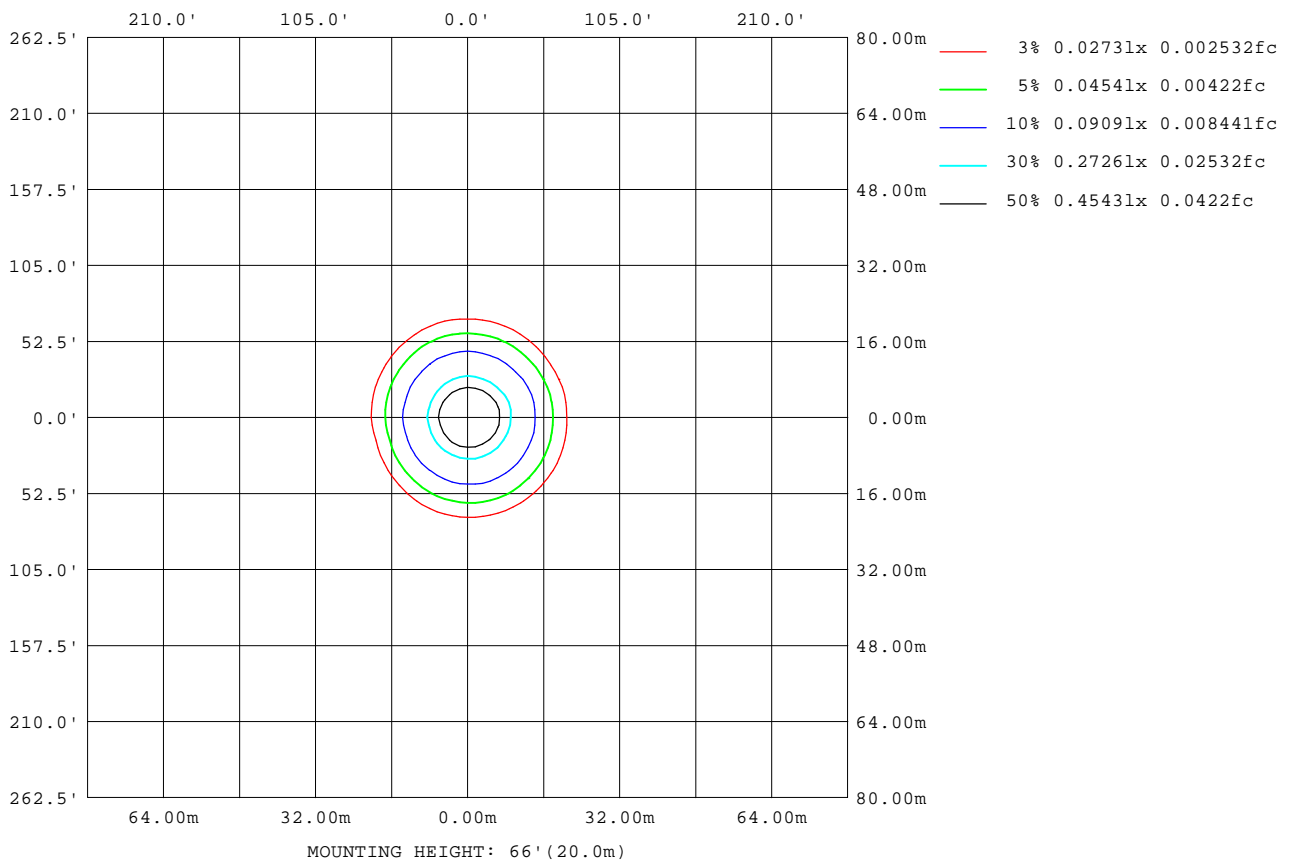
Note:The Curves indicate the illuminated area and the average illumination when the luminaire is at different distance.

C Range: 0 - 360DEG
C Interval: 15.0DEG
Test Speed: HIGH
Temperature:25.3DEG
Operators:DAMIN
Test Date:2022-05-29

γ Range: 0 - 90DEG
γ Interval: 1.0DEG
Test System:EVERFINE GO-3000H_V1 SYSTEM V2.00.411
Humidity:65.0%
Test Distance:9.000m [K=1.0000]
Remarks:

ISOLUX DIAGRAM

Test:U:11.990V I:0.2961A P:2.4001W PF:0.6760 Freq:60.00Hz Lamp Flux:250.168x1 lm		
NAME: 486708-MR16-2W-3000K-40°	TYPE:	WEIGHT:
SPEC.:	DIM.:	SERIAL No.:
MFR.:	SUR.:35mm	Shielding Angle:



C Range: 0 - 360DEG
 C Interval: 15.0DEG
 Test Speed: HIGH
 Temperature:25.3DEG
 Operators:DAMIN
 Test Date:2022-05-29

γ Range: 0 - 90DEG
 γ Interval: 1.0DEG
 Test System:EVERFINE GO-3000H_V1 SYSTEM V2.00.411
 Humidity:65.0%
 Test Distance:9.000m [K=1.0000]
 Remarks:

LED Avg.L Report

Test:U:11.990V I:0.2961A P:2.4001W PF:0.6760 Freq:60.00Hz Lamp Flux:250.168x1 lm		
NAME: 486708-MR16-2W-3000K-40°	TYPE:	WEIGHT:
SPEC.:	DIM.:	SERIAL No.:
MFR.:	SUR.:35mm	Shielding Angle:

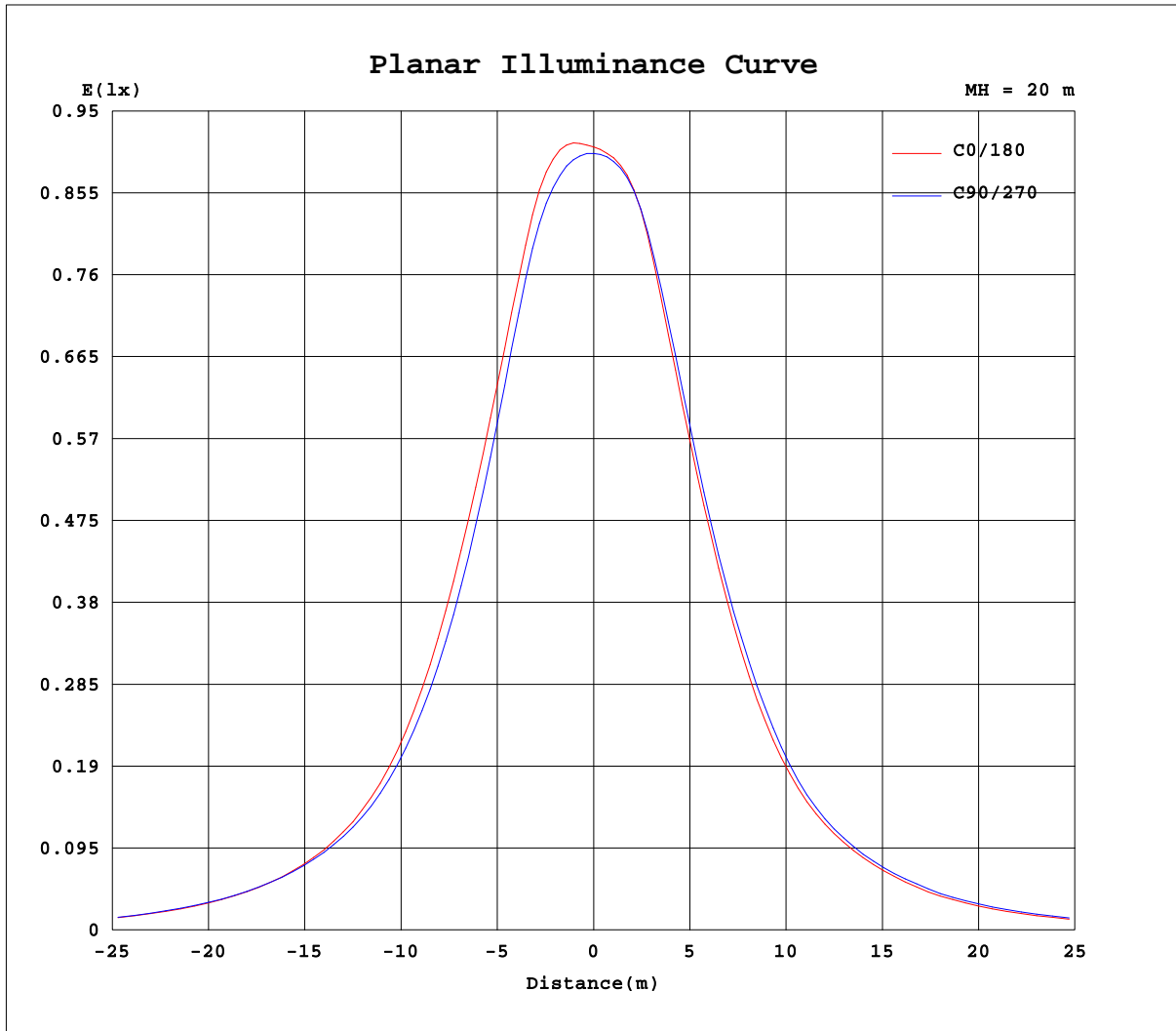
AvgL	cd/m2
L_0~180(65)av	17513
L_0~180(75)av	9045
L_0~180(85)av	6838
L_90~270(65)av	7788
L_90~270(75)av	4368
L_90~270(85)av	0
L_45(65)av	16943
L_45(75)av	6094
L_45(85)av	55

Standard: GB/T 29293-2012

C Range: 0 - 360DEG
C Interval: 15.0DEG
Test Speed: HIGH
Temperature:25.3DEG
Operators:DAMIN
Test Date:2022-05-29

γ Range: 0 - 90DEG
γ Interval: 1.0DEG
Test System:EVERFINE GO-3000H_V1 SYSTEM V2.00.411
Humidity:65.0%
Test Distance:9.000m [K=1.0000]
Remarks:

Planar Illuminance Curve



C Range: 0 - 360DEG
 C Interval: 15.0DEG
 Test Speed: HIGH
 Temperature: 25.3DEG
 Operators: DAMIN
 Test Date: 2022-05-29

γ Range: 0 - 90DEG
 γ Interval: 1.0DEG
 Test System: EVERFINE GO-3000H_V1 SYSTEM V2.00.411
 Humidity: 65.0%
 Test Distance: 9.000m [K=1.0000]
 Remarks:

LUMINOUS DISTRIBUTION INTENSITY DATA

Test:U:11.990V I:0.2961A P:2.4001W PF:0.6760 Freq:60.00Hz Lamp Flux:250.168x1 lm		
NAME: 486708-MR16-2W-3000K-40°	TYPE:	WEIGHT:
SPEC.:	DIM.:	SERIAL No.:
MFR.:	SUR.:35mm	Shielding Angle:

Table--1

UNIT: cd

C(DEG) γ (DEG)	0	15	30	45	60	75	90	105	120	135	150	165	180	195	210	225	240	255	270
0	361	361	361	361	361	361	361	361	361	361	361	361	361	361	361	361	361	361	361
5	364	363	361	360	357	357	355	355	352	351	349	349	352	351	352	352	352	352	354
10	331	335	329	328	322	323	317	315	306	302	295	295	304	302	305	303	306	306	312
15	262	266	260	258	250	250	244	245	235	233	226	225	234	230	233	231	237	236	243
20	194	194	189	188	182	182	177	176	170	172	167	164	170	165	167	168	174	174	178
25	136	135	132	134	131	131	125	123	119	120	116	114	118	115	118	119	123	123	126
30	94.3	95.0	93.3	94.3	92.1	92.2	88.9	88.4	85.1	84.6	82.2	81.2	82.8	81.0	83.4	83.7	86.6	85.9	87.8
35	67.5	68.8	67.8	68.7	67.9	68.3	66.0	65.3	62.5	61.8	60.1	59.4	60.8	59.8	61.6	61.8	63.9	63.7	64.4
40	49.2	50.7	50.4	51.1	50.9	51.4	49.5	49.1	46.5	44.8	43.7	42.2	44.2	44.5	45.8	45.9	47.7	47.8	47.8
45	35.6	36.3	37.1	36.9	37.4	37.0	36.6	35.5	34.3	32.1	31.0	30.0	31.7	32.6	33.1	33.9	34.5	35.1	34.6
50	25.3	26.1	26.9	26.6	26.6	26.3	26.1	25.6	24.7	22.8	21.5	20.8	22.3	23.4	24.0	24.3	24.5	24.8	24.7
55	17.6	18.6	19.1	18.8	18.2	17.0	16.6	17.2	17.2	15.9	14.7	14.3	15.5	16.3	17.0	17.0	17.0	16.5	16.6
60	12.3	13.0	13.4	12.9	10.7	8.45	7.80	9.19	10.7	10.8	9.98	9.69	10.6	11.3	11.8	11.6	10.4	8.76	8.58
65	8.17	8.64	8.82	7.68	4.58	3.37	3.14	3.62	5.17	6.32	6.12	5.92	6.63	7.10	7.41	6.83	4.68	3.55	3.44
70	4.91	5.15	5.13	3.26	2.11	1.89	1.80	1.85	2.06	2.96	3.27	3.21	3.67	3.95	4.07	2.95	2.10	1.92	1.93
75	2.70	2.74	2.42	1.63	1.40	1.15	1.02	1.10	1.24	1.39	1.68	1.78	1.99	2.06	1.95	1.51	1.33	1.22	1.24
80	1.58	1.50	1.12	0.43	0.04	0.04	0.04	0.03	0.02	0.27	0.75	1.22	1.34	1.32	0.82	0.27	0.01	0.01	0.01
85	0.92	0.49	0.01	0.01	0.00	0.00	0.00	0.00	0.00	0.00	0.00	0.02	0.28	0.07	0.00	0.00	0.00	0.00	0.00
90	0.00	0.00	0.00	0.00	0.00	0.00	0.00	0.00	0.00	0.00	0.00	0.00	0.00	0.00	0.00	0.00	0.00	0.00	0.00

C Range: 0 - 360DEG
 C Interval: 15.0DEG
 Test Speed: HIGH
 Temperature:25.3DEG
 Operators:DAMIN
 Test Date:2022-05-29

γ Range: 0 - 90DEG
 γ Interval: 1.0DEG
 Test System:EVERFINE GO-3000H_V1 SYSTEM V2.00.411
 Humidity:65.0%
 Test Distance:9.000m [K=1.0000]
 Remarks:

LUMINOUS DISTRIBUTION INTENSITY DATA

Test:U:11.990V I:0.2961A P:2.4001W PF:0.6760 Freq:60.00Hz Lamp Flux:250.168x1 lm		
NAME: 486708-MR16-2W-3000K-40°	TYPE:	WEIGHT:
SPEC.:	DIM.:	SERIAL No.:
MFR.:	SUR.:35mm	Shielding Angle:

Table--2

UNIT: cd

C(DEG) γ (DEG)	285	300	315	330	345										
0	361	361	361	361	361										
5	355	358	359	362	364										
10	314	322	324	331	333										
15	245	255	257	264	266										
20	178	185	189	199	202										
25	125	129	131	140	143										
30	86.9	90.1	90.3	96.2	98.9										
35	63.3	65.4	64.8	68.5	70.1										
40	47.2	48.2	47.7	49.7	50.5										
45	34.9	34.9	34.8	34.9	36.2										
50	25.1	25.2	24.9	24.6	25.4										
55	17.5	17.9	17.4	17.1	17.5										
60	10.1	12.0	12.1	11.9	12.2										
65	4.19	6.41	7.82	7.92	8.19										
70	2.03	2.56	4.08	4.69	4.94										
75	1.39	1.52	1.79	2.49	2.73										
80	0.02	0.21	0.75	1.33	1.58										
85	0.00	0.00	0.01	0.05	0.98										
90	0.00	0.00	0.00	0.00	0.00										

C Range: 0 - 360DEG
C Interval: 15.0DEG
Test Speed: HIGH
Temperature:25.3DEG
Operators:DAMIN
Test Date:2022-05-29

γ Range: 0 - 90DEG
γ Interval: 1.0DEG
Test System:EVERFINE GO-3000H_V1 SYSTEM V2.00.411
Humidity:65.0%
Test Distance:9.000m [K=1.0000]
Remarks: