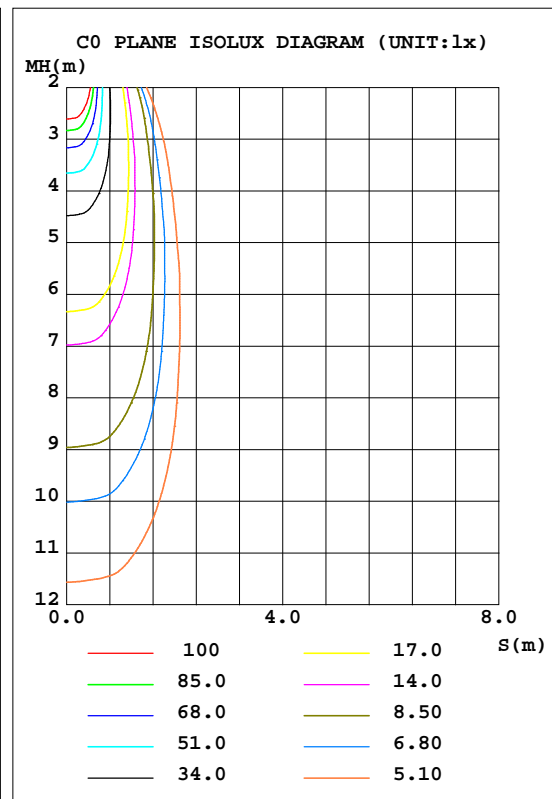
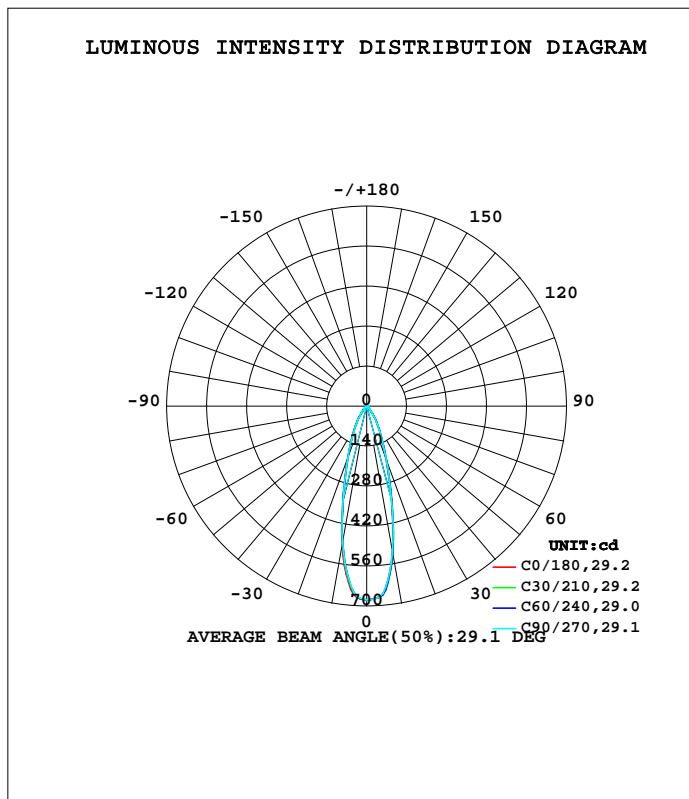


**LUMINAIRE PHOTOMETRIC TEST REPORT**

Test:U:12.008V I:0.2842A P:2.3622W PF:0.6921 Freq:60.00Hz Lamp Flux:253.483x1 lm		
NAME: 486702-MR16-2W-2700K-25°	TYPE:	WEIGHT:
SPEC.:	DIM.:	SERIAL No.:
MFR.:	SUR.:35mm	Shielding Angle:

DATA OF LAMP		PHOTOMETRIC DATA Eff: 107.31 lm/W			
MODEL		I <sub>max</sub> (cd)	678.7	S/MH(C0/180)	0.48
NOMINAL POWER(W)	--	LOR(%)	100.0	S/MH(C90/270)	0.48
RATED VOLTAGE(V)	--	TOTAL FLUX(lm)	253.48	η UP,DN(C0-180)	0.0,50.4
NOMINAL FLUX(lm)	253.483	CIE CLASS	DIRECT	η UP,DN(C180-360)	0.0,49.6
LAMPS INSIDE	1	η up(%)	0.0	CIBSE SHR NOM	0.50
TEST VOLTAGE(V)	--	η down(%)	100.0	CIBSE SHR MAX	0.50



C Range: 0 - 360DEG  
 C Interval: 15.0DEG  
 Test Speed: HIGH  
 Temperature:25.3DEG  
 Operators:DAMIN  
 Test Date:2022-05-30

γ Range: 0 - 90DEG  
 γ Interval: 1.0DEG  
 Test System:EVERFINE GO-3000H\_V1 SYSTEM V2.00.411  
 Humidity:65.0%  
 Test Distance:9.000m [K=1.0000]  
 Remarks:

**ZONAL FLUX DIAGRAM**

**ZONAL FLUX DIAGRAM:**

γ	C0	C45	C90	C135	C180	C225	C270	C315	γ	Φ zone	Φ total	%lum,lamp
10	520.0	529.6	520.7	496.6	495.2	481.0	487.4	515.6	0- 10	57.09	57.09	22.5,22.5
20	202.7	210.4	205.1	192.9	196.0	194.3	195.6	204.9	10- 20	90.47	147.6	58.2,58.2
30	78.06	82.51	78.63	75.96	78.49	76.68	76.32	78.47	20- 30	57.89	205.5	81.1,81.1
40	24.11	24.41	24.28	22.37	23.76	23.05	21.60	23.92	30- 40	29.37	234.8	92.6,92.6
50	6.283	6.214	5.872	6.688	7.120	6.448	5.642	5.979	40- 50	9.311	244.1	96.3,96.3
60	4.729	4.516	2.836	4.984	5.453	5.159	3.169	4.497	50- 60	4.714	248.9	98.2,98.2
70	3.170	2.138	1.088	2.316	3.405	2.398	1.093	2.362	60- 70	3.354	252.2	99.5,99.5
80	0.8883	0.1472	0.0179	0.0939	0.9821	0.1241	0.0067	0.1907	70- 80	1.183	253.4	100,100
90	0	0	0	0	0	0	0	0	80- 90	0.0953	253.5	100,100
100									90-100			
110									100-110			
120									110-120			
130									120-130			
140									130-140			
150									140-150			
160									150-160			
170									160-170			
180									170-180			
DEG	LUMINOUS INTENSITY:cd									UNIT:lm		

Conical surface Flux(90deg): 240.88 lm

%lum = 95.0%  
%lamp = 95.0%

Conical surface Flux(120deg): 248.85 lm

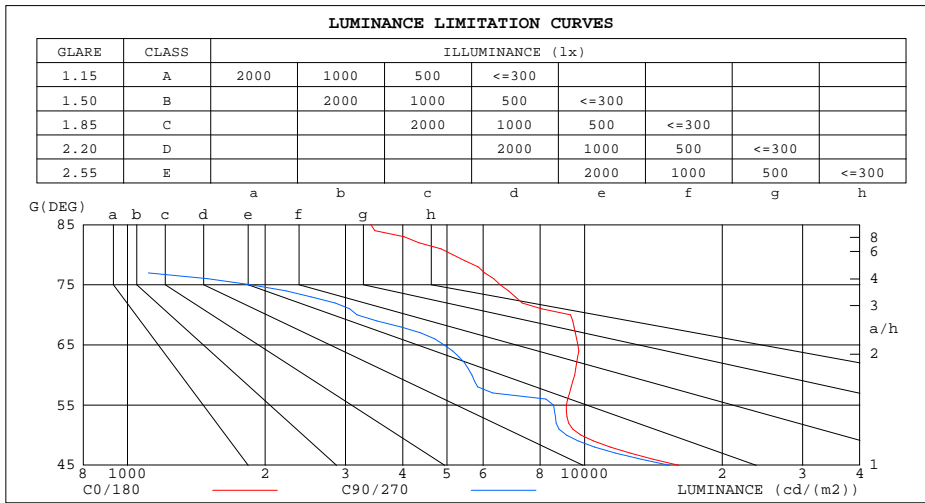
%lum = 98.2%  
%lamp = 98.2%

C Range: 0 - 360DEG  
C Interval: 15.0DEG  
Test Speed: HIGH  
Temperature:25.3DEG  
Operators:DAMIN  
Test Date:2022-05-30

γ Range: 0 - 90DEG  
γ Interval: 1.0DEG  
Test System:EVERFINE GO-3000H\_V1 SYSTEM V2.00.411  
Humidity:65.0%  
Test Distance:9.000m [K=1.0000]  
Remarks:

**LUMINANCE LIMITATION CURVES**

Test:U:12.008V I:0.2842A P:2.3622W PF:0.6921 Freq:60.00Hz Lamp Flux:253.483x1 lm		
NAME: 486702-MR16-2W-2700K-25°	TYPE:	WEIGHT:
SPEC.:	DIM.:	SERIAL No.:
MFR.:	SUR.:35mm	Shielding Angle:



LUMINANCE cd/(m2)		
G(DEG)	C0/180	C90/270
85	3408	0
80	5144	103
75	6532	1861
70	9319	3180
65	9665	4926
60	9510	5672
55	9129	8555
50	9829	9135
45	16078	15338

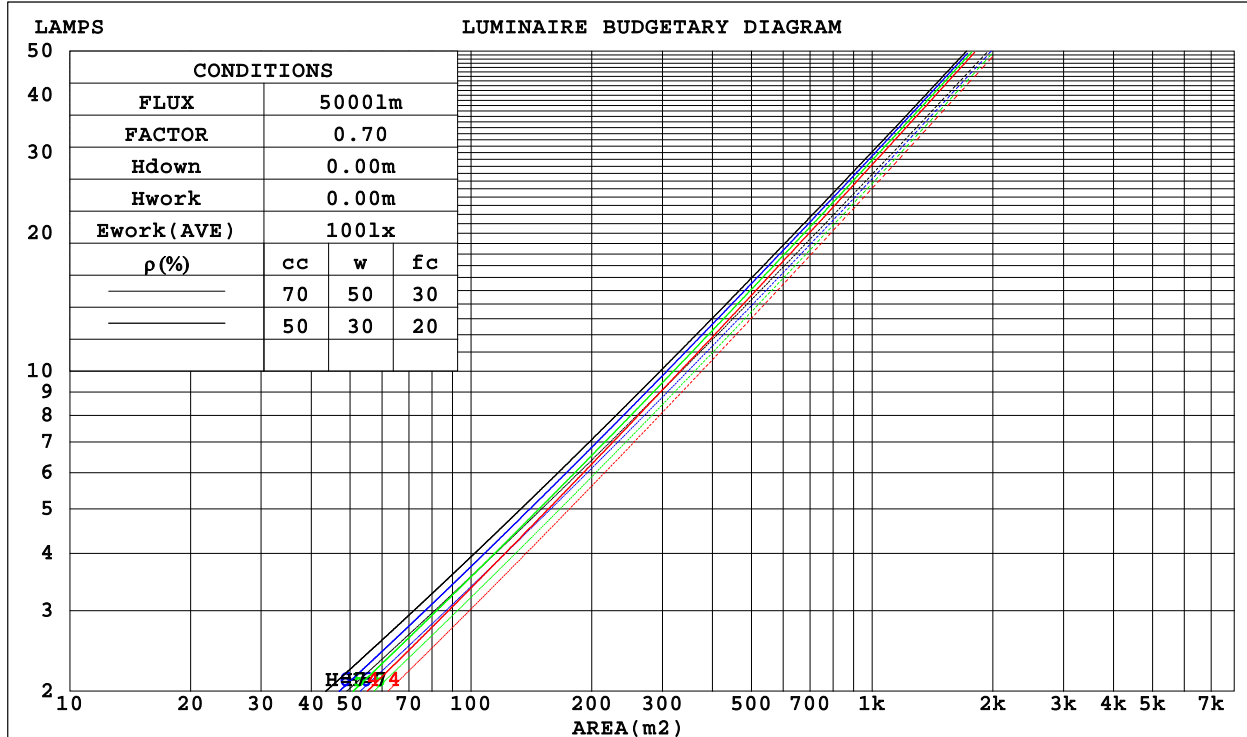
C Range: 0 - 360DEG  
C Interval: 15.0DEG  
Test Speed: HIGH  
Temperature:25.3DEG  
Operators:DAMIN  
Test Date:2022-05-30

γ Range: 0 - 90DEG  
γ Interval: 1.0DEG  
Test System:EVERFINE GO-3000H\_V1 SYSTEM V2.00.411  
Humidity:65.0%  
Test Distance:9.000m [K=1.0000]  
Remarks:

**CU AND LUMINAIRE BUDGETARY ESTIMATE DIAGRAM**

Test:U:12.008V I:0.2842A P:2.3622W PF:0.6921 Freq:60.00Hz Lamp Flux:253.483x1 lm		
NAME: 486702-MR16-2W-2700K-25°	TYPE:	WEIGHT:
SPEC.:	DIM.:	SERIAL No.:
MFR.:	SUR.:35mm	Shielding Angle:

$\rho_{cc}$	80%			70%			50%			30%			10%			0
$\rho_w$	50%	30%	10%	50%	30%	10%	50%	30%	10%	50%	30%	10%	50%	30%	10%	0
$\rho_{fc}$	20%			20%			20%			20%			20%			0
RCR	RCR:Room Cavity Ratio						Coefficients of Utilization(CU)									
0.0	1.19	1.19	1.19	1.16	1.16	1.16	1.11	1.11	1.11	1.06	1.06	1.06	1.02	1.02	1.02	.00
1.0	1.11	1.09	1.07	1.09	1.07	1.05	1.05	1.04	1.02	1.02	1.00	.99	.98	.97	.96	.95
2.0	1.05	1.01	.98	1.03	.99	.97	.99	.97	.95	.97	.95	.93	.94	.92	.91	.89
3.0	.99	.94	.91	.97	.93	.90	.95	.91	.88	.92	.89	.87	.90	.88	.86	.84
4.0	.93	.88	.85	.92	.88	.84	.90	.86	.83	.88	.85	.82	.86	.84	.81	.80
5.0	.88	.83	.80	.88	.83	.79	.86	.82	.79	.84	.81	.78	.83	.80	.77	.76
6.0	.84	.79	.75	.83	.79	.75	.82	.78	.74	.81	.77	.74	.79	.76	.74	.72
7.0	.80	.75	.71	.80	.75	.71	.79	.74	.71	.77	.73	.71	.76	.73	.70	.69
8.0	.77	.72	.68	.76	.71	.68	.75	.71	.68	.74	.70	.67	.73	.70	.67	.66
9.0	.74	.69	.65	.73	.68	.65	.72	.68	.65	.72	.67	.65	.71	.67	.64	.63
10.0	.71	.66	.62	.70	.66	.62	.70	.65	.62	.69	.65	.62	.68	.65	.62	.61



C Range: 0 - 360DEG  
 C Interval: 15.0DEG  
 Test Speed: HIGH  
 Temperature:25.3DEG  
 Operators:DAMIN  
 Test Date:2022-05-30

$\gamma$  Range: 0 - 90DEG  
 $\gamma$  Interval: 1.0DEG  
 Test System:EVERFINE GO-3000H\_V1 SYSTEM V2.00.411  
 Humidity:65.0%  
 Test Distance:9.000m [K=1.0000]  
 Remarks:

**WEC AND CCEC**

Test:U:12.008V I:0.2842A P:2.3622W PF:0.6921 Freq:60.00Hz Lamp Flux:253.483x1 lm		
NAME: 486702-MR16-2W-2700K-25°	TYPE:	WEIGHT:
SPEC.:	DIM.:	SERIAL No.:
MFR.:	SUR.:35mm	Shielding Angle:

pcc	80%			70%			50%			30%			10%			0
pw	50%	30%	10%	50%	30%	10%	50%	30%	10%	50%	30%	10%	50%	30%	10%	0
pfc	20%			20%			20%			20%			20%			0
RCR	RCR:Room Cavity Ratio						Wall Exitance Coefficients(WEC)									
0.0																
1.0	.165	.094	.030	.158	.090	.029	.145	.083	.027	.134	.077	.025	.123	.071	.023	
2.0	.156	.085	.026	.150	.083	.025	.140	.078	.024	.130	.073	.023	.121	.069	.022	
3.0	.147	.078	.023	.142	.076	.023	.133	.072	.022	.125	.069	.021	.117	.065	.020	
4.0	.139	.072	.021	.135	.070	.021	.127	.067	.020	.120	.064	.019	.113	.062	.019	
5.0	.131	.067	.019	.128	.065	.019	.121	.063	.019	.115	.061	.018	.109	.058	.018	
6.0	.124	.062	.018	.121	.061	.018	.116	.059	.017	.110	.057	.017	.105	.055	.016	
7.0	.118	.058	.017	.116	.058	.016	.111	.056	.016	.106	.054	.016	.101	.053	.015	
8.0	.113	.055	.015	.110	.054	.015	.106	.053	.015	.102	.052	.015	.098	.050	.015	
9.0	.108	.052	.015	.106	.051	.014	.102	.050	.014	.098	.049	.014	.094	.048	.014	
10.0	.103	.049	.014	.101	.049	.014	.098	.048	.013	.094	.047	.013	.091	.046	.013	

pcc	80%			70%			50%			30%			10%			0
pw	50%	30%	10%	50%	30%	10%	50%	30%	10%	50%	30%	10%	50%	30%	10%	0
pfc	20%			20%			20%			20%			20%			0
RCR	RCR:Room Cavity Ratio						Ceiling Cavity Exitance Coefficients(CCEC)									
0.0	.190	.190	.190	.163	.163	.163	.111	.111	.111	.064	.064	.064	.020	.020	.020	
1.0	.170	.157	.146	.146	.135	.126	.100	.093	.087	.057	.054	.050	.018	.017	.016	
2.0	.154	.133	.114	.132	.114	.099	.090	.079	.069	.052	.046	.040	.017	.015	.013	
3.0	.141	.113	.092	.121	.098	.080	.083	.068	.056	.048	.040	.033	.015	.013	.011	
4.0	.130	.099	.075	.111	.085	.065	.076	.059	.046	.044	.035	.027	.014	.011	.009	
5.0	.120	.087	.062	.103	.075	.054	.071	.052	.038	.041	.031	.023	.013	.010	.007	
6.0	.112	.077	.052	.096	.067	.045	.066	.047	.032	.039	.027	.019	.012	.009	.006	
7.0	.105	.069	.044	.090	.060	.039	.062	.042	.027	.036	.025	.016	.012	.008	.005	
8.0	.099	.063	.038	.085	.054	.033	.059	.038	.024	.034	.023	.014	.011	.007	.005	
9.0	.093	.057	.033	.080	.050	.029	.056	.035	.020	.032	.021	.012	.011	.007	.004	
10.0	.089	.053	.029	.076	.046	.025	.053	.032	.018	.031	.019	.011	.010	.006	.004	

C Range: 0 - 360DEG  
 C Interval: 15.0DEG  
 Test Speed: HIGH  
 Temperature:25.3DEG  
 Operators:DAMIN  
 Test Date:2022-05-30

γ Range: 0 - 90DEG  
 γ Interval: 1.0DEG  
 Test System:EVERFINE GO-3000H\_V1 SYSTEM V2.00.411  
 Humidity:65.0%  
 Test Distance:9.000m [K=1.0000]  
 Remarks:

**UGR(Unified Glare Rating) Table**

Test:U:12.008V I:0.2842A P:2.3622W PF:0.6921 Freq:60.00Hz Lamp Flux:253.483x1 lm										
NAME: 486702-MR16-2W-2700K-25°					TYPE:			WEIGHT:		
SPEC.:					DIM.:			SERIAL No.:		
MFR.:					SUR.:35mm			Shielding Angle:		
ceiling/cavity	0.7	0.7	0.5	0.5	0.3	0.7	0.7	0.5	0.5	0.3
walls	0.5	0.3	0.5	0.3	0.3	0.5	0.3	0.5	0.3	0.3
working plane	0.2	0.2	0.2	0.2	0.2	0.2	0.2	0.2	0.2	0.2
Room dimensions	Viewed crosswise					Viewed endwise				
x = 2H y = 2H	17.1	17.9	17.3	18.1	18.2	16.7	17.5	16.9	17.7	17.8
3H	17.7	18.5	18.0	18.7	18.9	16.7	17.5	17.0	17.7	17.9
4H	17.9	18.6	18.2	18.8	19.1	16.7	17.4	16.9	17.6	17.8
6H	18.0	18.7	18.3	18.9	19.1	16.6	17.3	16.9	17.5	17.8
8H	18.0	18.6	18.3	18.9	19.2	16.5	17.2	16.8	17.5	17.7
12H	18.0	18.6	18.3	18.9	19.1	16.5	17.1	16.8	17.4	17.7
4H 2H	17.1	17.9	17.4	18.1	18.3	16.7	17.5	17.0	17.7	17.9
3H	17.9	18.6	18.3	18.8	19.1	16.8	17.5	17.2	17.7	18.0
4H	18.2	18.8	18.5	19.1	19.4	16.8	17.4	17.1	17.7	18.0
6H	18.3	18.9	18.7	19.2	19.5	16.7	17.2	17.1	17.5	17.9
8H	18.4	18.8	18.8	19.2	19.6	16.7	17.1	17.0	17.5	17.8
12H	18.3	18.8	18.8	19.2	19.5	16.6	17.0	17.0	17.4	17.8
8H 4H	18.1	18.6	18.5	18.9	19.3	16.8	17.2	17.2	17.6	18.0
6H	18.3	18.7	18.7	19.1	19.5	16.7	17.1	17.1	17.5	17.9
8H	18.3	18.6	18.7	19.1	19.5	16.6	17.0	17.1	17.4	17.8
12H	18.3	18.6	18.8	19.0	19.5	16.6	16.9	17.0	17.3	17.8
12H 4H	18.1	18.5	18.5	18.9	19.3	16.7	17.2	17.1	17.5	17.9
6H	18.2	18.6	18.7	19.0	19.4	16.6	17.0	17.1	17.4	17.8
8H	18.2	18.5	18.7	19.0	19.4	16.6	16.9	17.0	17.3	17.8
Variations with the observer position at spacings:										
S = 1.0H	+ 1.4 / - 1.6					+ 2.3 / - 3.5				
1.5H	+ 3.2 / - 1.8					+ 4.2 / - 2.8				
2.0H	+ 1.4 / - 0.5					+ 2.3 / - 1.7				

CIE Pub.117, 253.5 lm Total Lamp Luminous Flux Corrected (8log(F/F0) = -4.8)  
Area: 0.001 m2

C Range: 0 - 360DEG  
C Interval: 15.0DEG  
Test Speed: HIGH  
Temperature:25.3DEG  
Operators:DAMIN  
Test Date:2022-05-30

γ Range: 0 - 90DEG  
γ Interval: 1.0DEG  
Test System:EVERFINE GO-3000H\_V1 SYSTEM V2.00.411  
Humidity:65.0%  
Test Distance:9.000m [K=1.0000]  
Remarks:

**UTILIZATION FACTORS TABLE**

Test:U:12.008V I:0.2842A P:2.3622W PF:0.6921 Freq:60.00Hz Lamp Flux:253.483x1 lm		
NAME: 486702-MR16-2W-2700K-25°	TYPE:	WEIGHT:
SPEC.:	DIM.:	SERIAL No.:
MFR.:	SUR.:35mm	Shielding Angle:

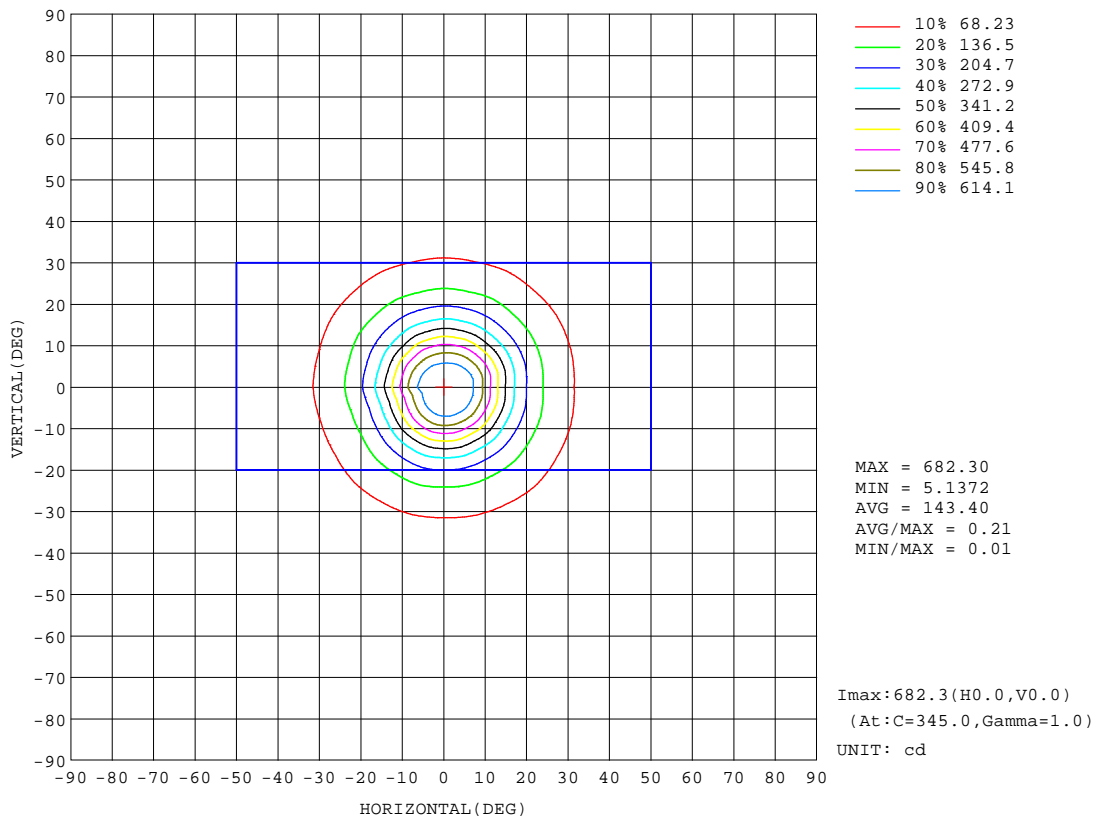
REFLECTANCE										
Ceiling	0.8	0.8	0.8	0.7	0.7	0.7	0.5	0.5	0.5	0
Walls	0.7	0.5	0.3	0.7	0.5	0.3	0.7	0.5	0.3	0
Working plane	0.2	0.2	0.2	0.2	0.2	0.2	0.2	0.2	0.2	0
ROOM INDEX	UTILIZATION FACTORS(PERCENT) k(RI) x RCR = 5									
k = 0.60	87	81	77	86	80	77	86	80	77	73
0.80	94	88	85	94	88	85	93	88	84	80
1.00	99	93	89	98	93	89	96	93	89	85
1.25	103	98	94	102	97	94	100	96	93	89
1.50	106	101	97	104	100	97	102	98	96	91
2.00	108	104	101	107	103	100	104	101	99	93
2.50	110	106	103	108	105	102	105	103	100	94
3.00	112	108	105	110	107	104	106	104	102	96
4.00	114	111	109	112	109	107	108	106	105	97
5.00	115	113	111	113	111	109	109	107	106	99
ROOM INDEX	UF(total)									Direct
According to DIN EN 13032-2 2004			Suspended				SHRNOM = 1.25			

C Range: 0 - 360DEG  
C Interval: 15.0DEG  
Test Speed: HIGH  
Temperature:25.3DEG  
Operators:DAMIN  
Test Date:2022-05-30

γ Range: 0 - 90DEG  
γ Interval: 1.0DEG  
Test System:EVERFINE GO-3000H\_V1 SYSTEM V2.00.411  
Humidity:65.0%  
Test Distance:9.000m [K=1.0000]  
Remarks:

**ISOCANDELA DIAGRAM**

Test:U:12.008V I:0.2842A P:2.3622W PF:0.6921 Freq:60.00Hz Lamp Flux:253.483x1 lm		
NAME: 486702-MR16-2W-2700K-25°	TYPE:	WEIGHT:
SPEC.:	DIM.:	SERIAL No.:
MFR.:	SUR.:35mm	Shielding Angle:



C Range: 0 - 360DEG  
 C Interval: 15.0DEG  
 Test Speed: HIGH  
 Temperature:25.3DEG  
 Operators:DAMIN  
 Test Date:2022-05-30

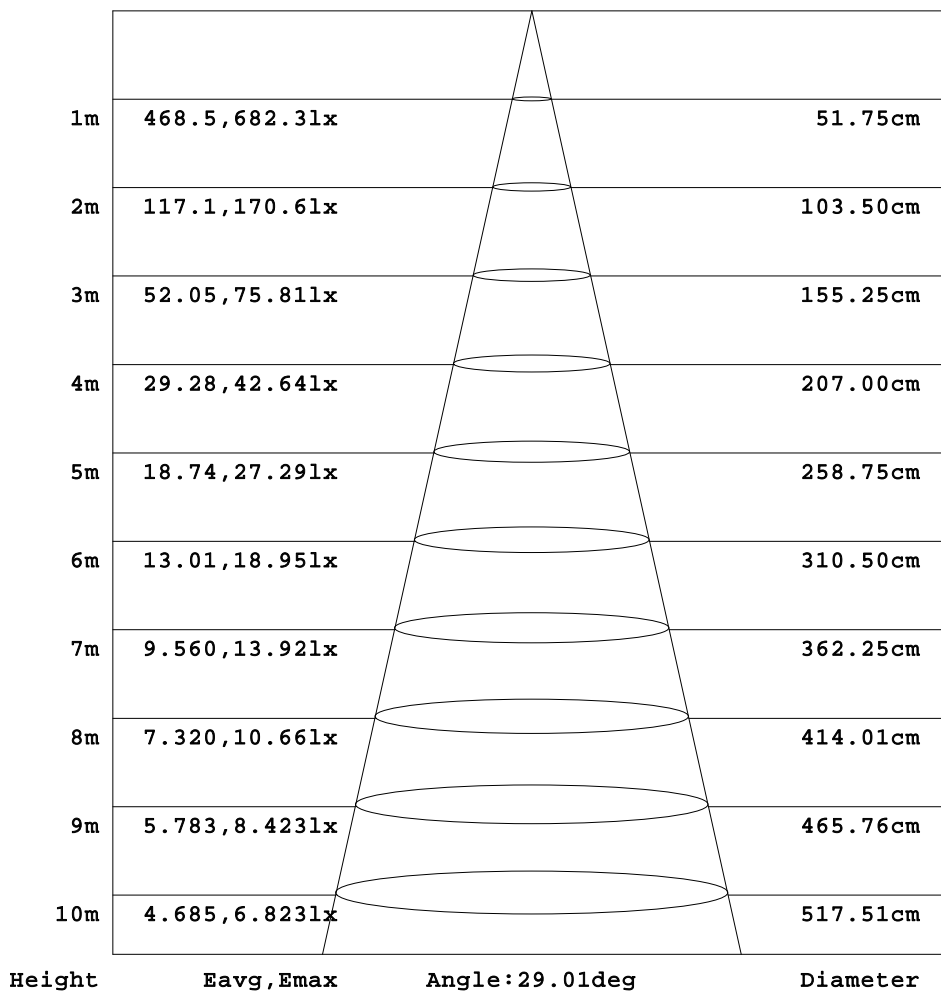
γ Range: 0 - 90DEG  
 γ Interval: 1.0DEG  
 Test System:EVERFINE GO-3000H\_V1 SYSTEM V2.00.411  
 Humidity:65.0%  
 Test Distance:9.000m [K=1.0000]  
 Remarks:



**AAI Figure**

Test:U:12.008V I:0.2842A P:2.3622W PF:0.6921 Freq:60.00Hz Lamp Flux:253.483x1 lm		
NAME: 486702-MR16-2W-2700K-25°	TYPE:	WEIGHT:
SPEC.:	DIM.:	SERIAL No.:
MFR.:	SUR.:35mm	Shielding Angle:

Flux out:105.7 lm



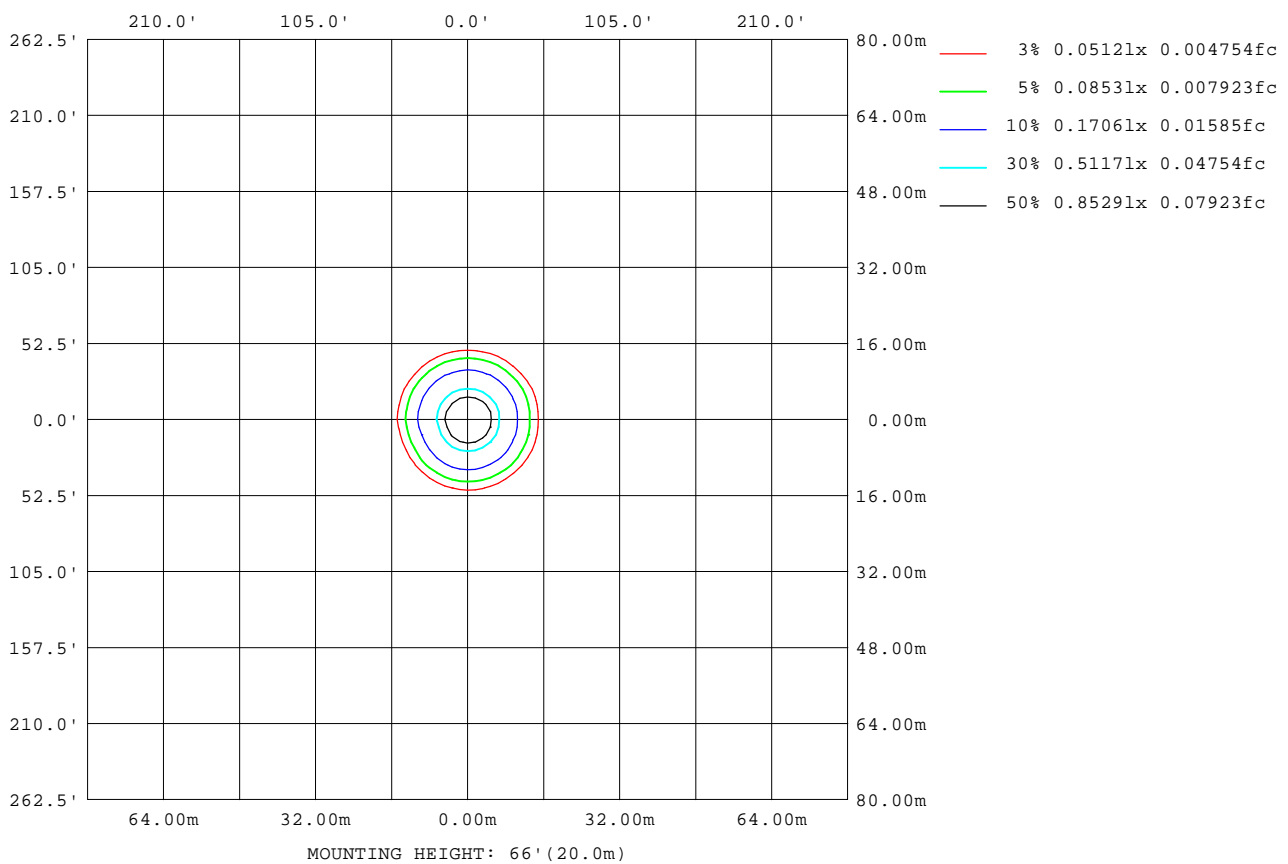
Note:The Curves indicate the illuminated area and the average illumination when the luminaire is at different distance.

C Range: 0 - 360DEG  
C Interval: 15.0DEG  
Test Speed: HIGH  
Temperature:25.3DEG  
Operators:DAMIN  
Test Date:2022-05-30

γ Range: 0 - 90DEG  
γ Interval: 1.0DEG  
Test System:EVERFINE GO-3000H\_V1 SYSTEM V2.00.411  
Humidity:65.0%  
Test Distance:9.000m [K=1.0000]  
Remarks:

**ISOLUX DIAGRAM**

Test:U:12.008V I:0.2842A P:2.3622W PF:0.6921 Freq:60.00Hz Lamp Flux:253.483x1 lm		
NAME: 486702-MR16-2W-2700K-25°	TYPE:	WEIGHT:
SPEC.:	DIM.:	SERIAL No.:
MFR.:	SUR.:35mm	Shielding Angle:



C Range: 0 - 360DEG  
C Interval: 15.0DEG  
Test Speed: HIGH  
Temperature:25.3DEG  
Operators:DAMIN  
Test Date:2022-05-30

γ Range: 0 - 90DEG  
γ Interval: 1.0DEG  
Test System:EVERFINE GO-3000H\_V1 SYSTEM V2.00.411  
Humidity:65.0%  
Test Distance:9.000m [K=1.0000]  
Remarks:

**LED Avg.L Report**

Test:U:12.008V I:0.2842A P:2.3622W PF:0.6921 Freq:60.00Hz Lamp Flux:253.483x1 lm		
NAME: 486702-MR16-2W-2700K-25°	TYPE:	WEIGHT:
SPEC.:	DIM.:	SERIAL No.:
MFR.:	SUR.:35mm	Shielding Angle:

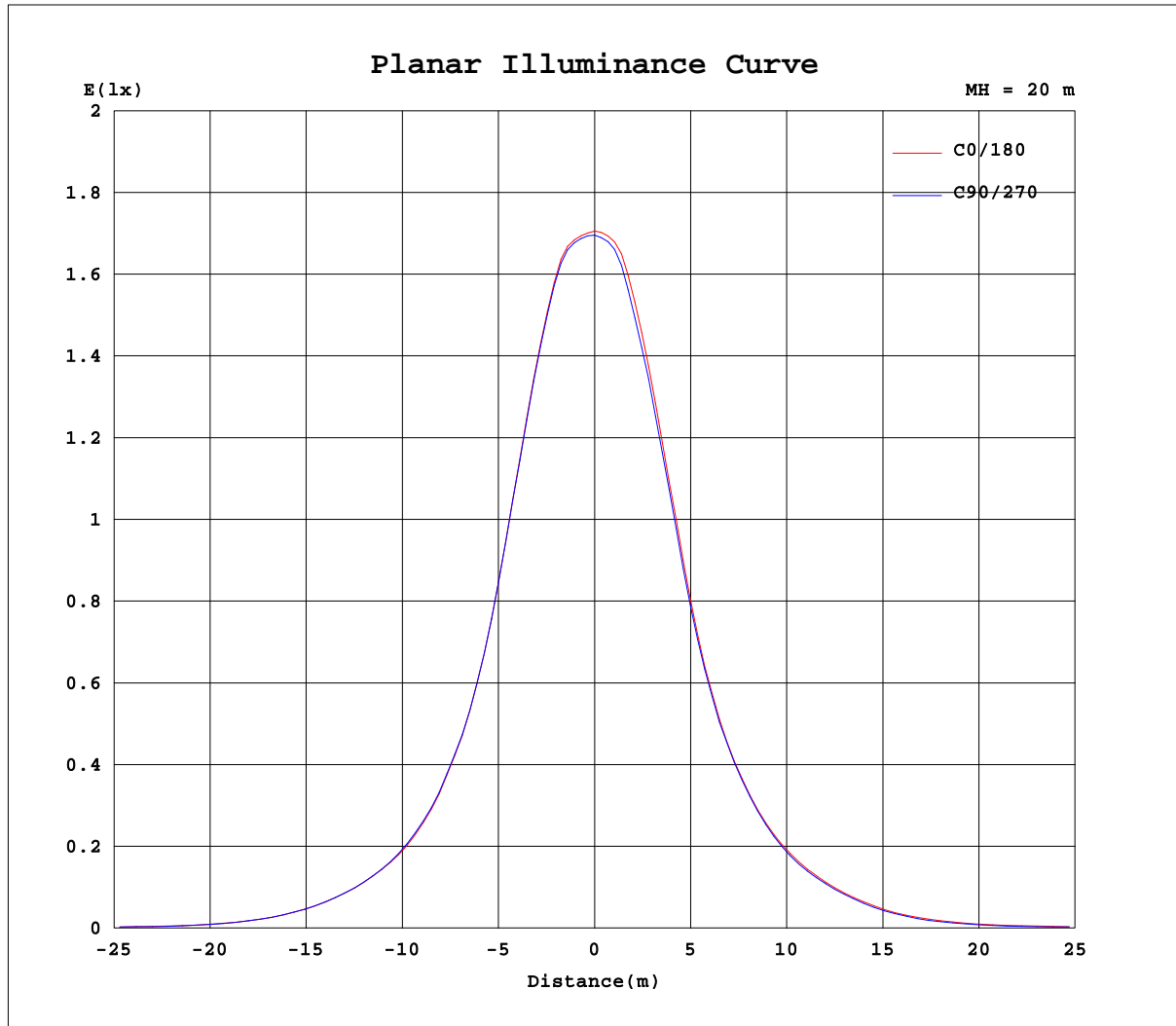
AvgL	cd/m2
L_0~180(65)av	10244
L_0~180(75)av	6737
L_0~180(85)av	3498
L_90~270(65)av	5171
L_90~270(75)av	1876
L_90~270(85)av	0
L_45(65)av	9585
L_45(75)av	3227
L_45(85)av	0

Standard: GB/T 29293-2012

C Range: 0 - 360DEG  
C Interval: 15.0DEG  
Test Speed: HIGH  
Temperature:25.3DEG  
Operators:DAMIN  
Test Date:2022-05-30

γ Range: 0 - 90DEG  
γ Interval: 1.0DEG  
Test System:EVERFINE GO-3000H\_V1 SYSTEM V2.00.411  
Humidity:65.0%  
Test Distance:9.000m [K=1.0000]  
Remarks:

### Planar Illuminance Curve



C Range: 0 - 360DEG  
C Interval: 15.0DEG  
Test Speed: HIGH  
Temperature: 25.3DEG  
Operators: DAMIN  
Test Date: 2022-05-30

$\gamma$  Range: 0 - 90DEG  
 $\gamma$  Interval: 1.0DEG  
Test System: EVERFINE GO-3000H\_V1 SYSTEM V2.00.411  
Humidity: 65.0%  
Test Distance: 9.000m [K=1.0000]  
Remarks:

LUMINOUS DISTRIBUTION INTENSITY DATA

Test:U:12.008V I:0.2842A P:2.3622W PF:0.6921 Freq:60.00Hz Lamp Flux:253.483x1 lm		
NAME: 486702-MR16-2W-2700K-25°	TYPE:	WEIGHT:
SPEC.:	DIM.:	SERIAL No.:
MFR.:	SUR.:35mm	Shielding Angle:

Table--1

UNIT: cd

C(DEG) γ (DEG)	0	15	30	45	60	75	90	105	120	135	150	165	180	195	210	225	240	255	270
0	679	679	679	679	679	679	679	679	679	679	679	679	679	679	679	679	679	679	679
5	659	662	664	665	663	661	659	656	651	644	634	628	643	637	637	633	634	631	633
10	520	529	527	530	524	523	521	518	508	497	481	474	495	488	488	481	485	481	487
15	334	344	342	347	338	342	336	336	324	318	302	297	318	307	311	307	312	307	314
20	203	209	208	210	207	207	205	206	199	193	183	181	196	192	195	194	195	193	196
25	122	128	127	130	126	128	125	127	122	120	113	114	123	120	124	121	123	119	121
30	78.1	80.6	80.2	82.5	80.2	80.7	78.6	79.8	77.0	76.0	71.9	73.5	78.5	76.2	77.8	76.7	77.2	74.8	76.3
35	46.9	49.7	49.0	49.8	48.0	48.7	47.2	47.4	45.6	45.0	42.8	42.3	47.0	45.6	46.8	45.1	45.1	44.3	44.6
40	24.1	25.4	25.4	24.4	24.2	24.5	24.3	23.3	23.3	22.4	22.4	21.2	23.8	23.5	22.9	23.0	22.1	22.5	21.6
45	11.3	10.9	11.1	11.3	11.4	11.2	10.8	10.8	10.7	10.6	10.7	10.7	11.8	11.0	10.4	10.6	10.5	10.1	9.93
50	6.28	5.89	5.90	6.21	6.26	5.92	5.87	6.28	6.78	6.69	6.68	6.65	7.12	6.54	6.24	6.45	6.39	5.99	5.64
55	5.21	4.93	4.89	5.04	4.93	4.82	4.91	5.28	5.70	5.71	5.75	5.77	6.08	5.67	5.49	5.67	5.50	5.09	4.83
60	4.73	4.43	4.41	4.52	4.19	2.88	2.84	2.95	4.94	4.98	5.11	5.10	5.45	5.10	4.99	5.16	4.98	3.56	3.17
65	4.06	3.90	3.81	3.77	2.43	2.16	2.08	2.19	2.59	4.21	4.35	4.28	4.60	4.41	4.33	4.34	2.97	2.52	2.29
70	3.17	3.10	3.06	2.14	1.44	1.16	1.09	1.16	1.55	2.32	2.81	2.55	3.40	3.37	3.27	2.40	1.70	1.28	1.09
75	1.68	1.72	1.62	0.75	0.57	0.50	0.48	0.46	0.59	0.78	1.56	1.58	1.81	1.74	1.62	0.87	0.59	0.50	0.49
80	0.89	0.86	0.38	0.15	0.01	0.02	0.02	0.02	0.01	0.09	0.38	0.77	0.98	0.91	0.42	0.12	0.00	0.01	0.01
85	0.30	0.16	0.00	0.00	0.00	0.00	0.00	0.00	0.00	0.00	0.00	0.04	0.31	0.14	0.00	0.00	0.00	0.00	0.00
90	0.00	0.00	0.00	0.00	0.00	0.00	0.00	0.00	0.00	0.00	0.00	0.00	0.00	0.00	0.00	0.00	0.00	0.00	0.00

C Range: 0 - 360DEG  
 C Interval: 15.0DEG  
 Test Speed: HIGH  
 Temperature:25.3DEG  
 Operators:DAMIN  
 Test Date:2022-05-30

γ Range: 0 - 90DEG  
 γ Interval: 1.0DEG  
 Test System:EVERFINE GO-3000H\_V1 SYSTEM V2.00.411  
 Humidity:65.0%  
 Test Distance:9.000m [K=1.0000]  
 Remarks:

LUMINOUS DISTRIBUTION INTENSITY DATA

Test:U:12.008V I:0.2842A P:2.3622W PF:0.6921 Freq:60.00Hz Lamp Flux:253.483x1 lm		
NAME: 486702-MR16-2W-2700K-25°	TYPE:	WEIGHT:
SPEC.:	DIM.:	SERIAL No.:
MFR.:	SUR.:35mm	Shielding Angle:

Table--2

UNIT: cd

C(DEG) γ (DEG)	285	300	315	330	345												
0	679	679	679	679	679												
5	636	645	653	660	664												
10	493	505	516	530	537												
15	315	326	334	348	354												
20	197	202	205	210	213												
25	120	127	125	129	129												
30	75.7	79.1	78.5	81.1	81.2												
35	44.5	47.0	47.4	49.8	49.7												
40	22.2	22.3	23.9	25.3	25.9												
45	10.01	10.3	10.7	11.7	12.4												
50	5.81	6.00	5.98	6.39	6.76												
55	4.91	5.05	4.99	5.20	5.35												
60	3.31	4.49	4.50	4.72	4.90												
65	2.34	2.69	3.88	4.14	4.29												
70	1.23	1.60	2.36	3.19	3.35												
75	0.50	0.63	0.94	1.69	1.82												
80	0.01	0.01	0.19	0.52	0.99												
85	0.00	0.00	0.00	0.00	0.25												
90	0.00	0.00	0.00	0.00	0.00												

C Range: 0 - 360DEG  
 C Interval: 15.0DEG  
 Test Speed: HIGH  
 Temperature:25.3DEG  
 Operators:DAMIN  
 Test Date:2022-05-30

γ Range: 0 - 90DEG  
 γ Interval: 1.0DEG  
 Test System:EVERFINE GO-3000H\_V1 SYSTEM V2.00.411  
 Humidity:65.0%  
 Test Distance:9.000m [K=1.0000]  
 Remarks: