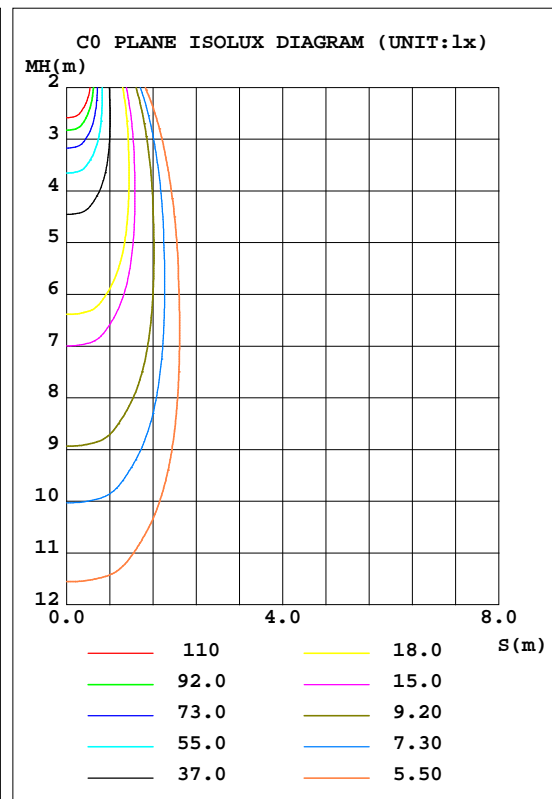
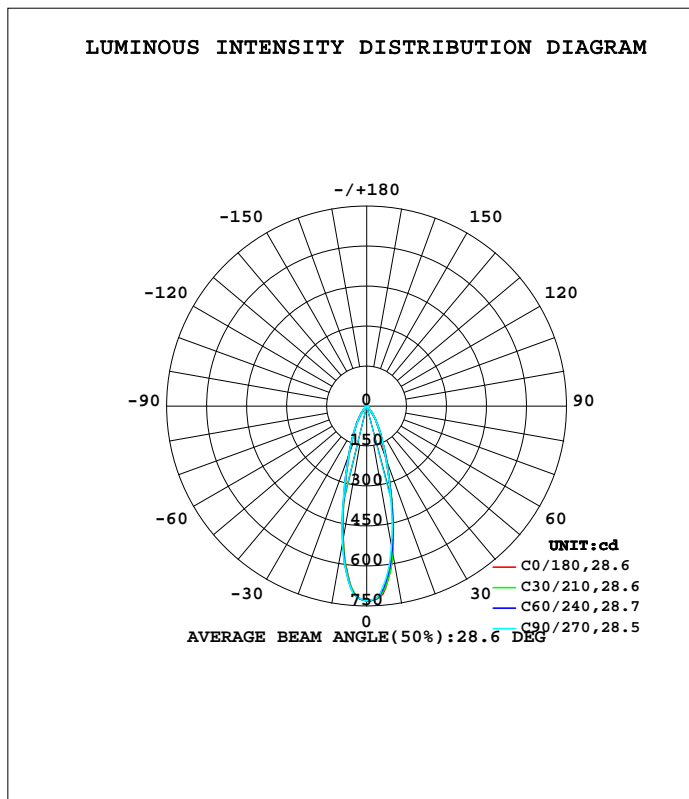


LUMINAIRE PHOTOMETRIC TEST REPORT

Test:U:12.017V I:0.2917A P:2.3686W PF:0.6757 Freq:60.00Hz Lamp Flux:264.931x1 lm		
NAME: 486707-MR16-2W-3000K-25°	TYPE:	WEIGHT:
SPEC.:	DIM.:	SERIAL No.:
MFR.:	SUR.:35mm	Shielding Angle:

DATA OF LAMP		PHOTOMETRIC DATA Eff: 111.85 lm/W			
MODEL		I _{max} (cd)	730.4	S/MH(C0/180)	0.46
NOMINAL POWER(W)	--	LOR(%)	100.0	S/MH(C90/270)	0.47
RATED VOLTAGE(V)	--	TOTAL FLUX(lm)	264.93	η UP,DN(C0-180)	0.0,51.0
NOMINAL FLUX(lm)	264.931	CIE CLASS	DIRECT	η UP,DN(C180-360)	0.0,49.0
LAMPS INSIDE	1	η up(%)	0.0	CIBSE SHR NOM	0.50
TEST VOLTAGE(V)	--	η down(%)	100.0	CIBSE SHR MAX	0.50



C Range: 0 - 360DEG
 C Interval: 15.0DEG
 Test Speed: HIGH
 Temperature:25.3DEG
 Operators:DAMIN
 Test Date:2022-05-30

γ Range: 0 - 90DEG
 γ Interval: 1.0DEG
 Test System:EVERFINE GO-3000H_V1 SYSTEM V2.00.411
 Humidity:65.0%
 Test Distance:9.000m [K=1.0000]
 Remarks:

ZONAL FLUX DIAGRAM

ZONAL FLUX DIAGRAM:

γ	C0	C45	C90	C135	C180	C225	C270	C315	γ	Φ zone	Φ total	%lum,lamp
10	563.3	561.4	539.0	521.3	510.1	512.3	524.0	546.1	0- 10	60.67	60.67	22.9,22.9
20	213.3	225.1	215.4	211.3	193.4	195.5	199.7	209.9	10- 20	94.74	155.4	58.7,58.7
30	80.76	86.38	84.85	81.85	75.34	75.17	76.74	80.26	20- 30	60.21	215.6	81.4,81.4
40	23.91	25.00	24.46	23.20	21.16	21.51	21.54	23.06	30- 40	29.54	245.2	92.5,92.5
50	7.107	6.365	6.425	6.948	6.651	6.828	6.752	6.955	40- 50	9.284	254.4	96,96
60	5.757	5.127	3.398	5.724	5.387	5.386	3.364	5.595	50- 60	5.281	259.7	98,98
70	3.726	2.417	1.220	2.483	3.290	2.448	1.354	2.541	60- 70	3.784	263.5	99.5,99.5
80	1.190	0.1462	0.0283	0.1309	0.8393	0.1331	0.0097	0.2280	70- 80	1.308	264.8	100,100
90	0	0	0	0	0	0	0	0	80- 90	0.1104	264.9	100,100
100									90-100			
110									100-110			
120									110-120			
130									120-130			
140									130-140			
150									140-150			
160									150-160			
170									160-170			
180									170-180			
DEG	LUMINOUS INTENSITY:cd									UNIT:lm		

Conical surface Flux(90deg): 251.1 lm

%lum = 94.8%
%lamp = 94.8%

Conical surface Flux(120deg): 259.73 lm

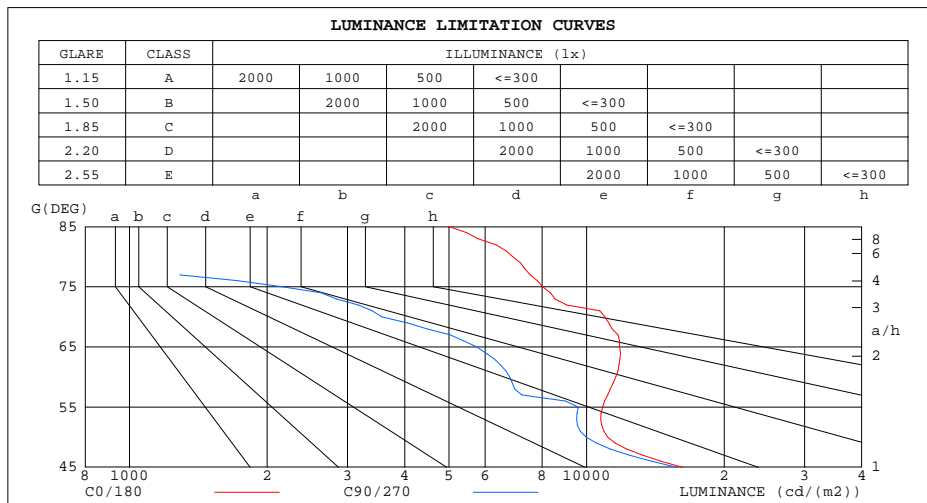
%lum = 98.0%
%lamp = 98.0%

C Range: 0 - 360DEG
C Interval: 15.0DEG
Test Speed: HIGH
Temperature:25.3DEG
Operators:DAMIN
Test Date:2022-05-30

γ Range: 0 - 90DEG
 γ Interval: 1.0DEG
Test System:EVERFINE GO-3000H_V1 SYSTEM V2.00.411
Humidity:65.0%
Test Distance:9.000m [K=1.0000]
Remarks:

LUMINANCE LIMITATION CURVES

Test:U:12.017V I:0.2917A P:2.3686W PF:0.6757 Freq:60.00Hz Lamp Flux:264.931x1 lm		
NAME: 486707-MR16-2W-3000K-25°	TYPE:	WEIGHT:
SPEC.:	DIM.:	SERIAL No.:
MFR.:	SUR.:35mm	Shielding Angle:



LUMINANCE cd/(m2)		
G(DEG)	C0/180	C90/270
85	4997	0
80	6893	163
75	8024	2159
70	10960	3566
65	11803	5754
60	11581	6793
55	10842	9592
50	11121	9991
45	16223	15756

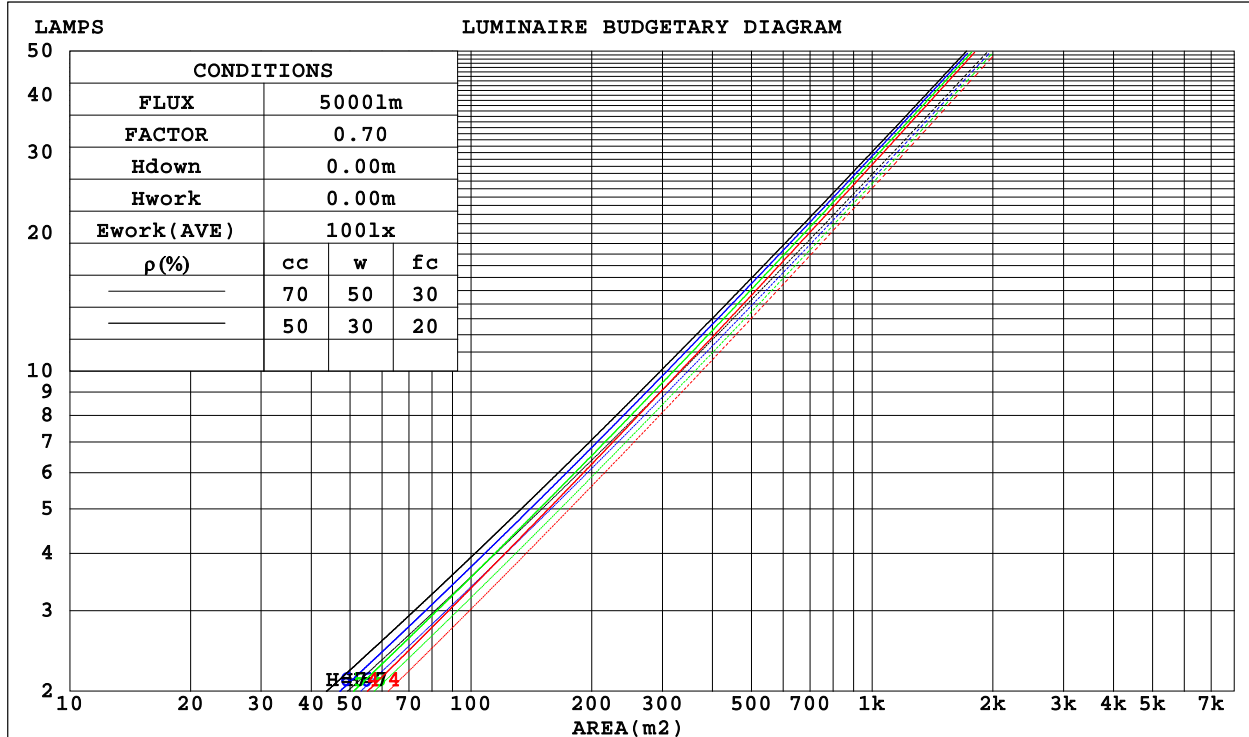
C Range: 0 - 360DEG
C Interval: 15.0DEG
Test Speed: HIGH
Temperature:25.3DEG
Operators:DAMIN
Test Date:2022-05-30

γ Range: 0 - 90DEG
γ Interval: 1.0DEG
Test System:EVERFINE GO-3000H_V1 SYSTEM V2.00.411
Humidity:65.0%
Test Distance:9.000m [K=1.0000]
Remarks:

CU AND LUMINAIRE BUDGETARY ESTIMATE DIAGRAM

Test:U:12.017V I:0.2917A P:2.3686W PF:0.6757 Freq:60.00Hz Lamp Flux:264.931x1 lm		
NAME: 486707-MR16-2W-3000K-25°	TYPE:	WEIGHT:
SPEC.:	DIM.:	SERIAL No.:
MFR.:	SUR.:35mm	Shielding Angle:

ρ _{cc}	80%			70%			50%			30%			10%			0
ρ _w	50%	30%	10%	50%	30%	10%	50%	30%	10%	50%	30%	10%	50%	30%	10%	0
ρ _{fc}	20%			20%			20%			20%			20%			0
RCR	RCR:Room Cavity Ratio						Coefficients of Utilization(CU)									
0.0	1.19	1.19	1.19	1.16	1.16	1.16	1.11	1.11	1.11	1.06	1.06	1.06	1.02	1.02	1.02	.00
1.0	1.11	1.09	1.07	1.09	1.07	1.05	1.05	1.04	1.02	1.02	1.00	.99	.98	.97	.96	.95
2.0	1.05	1.01	.98	1.03	.99	.97	.99	.97	.95	.97	.95	.93	.94	.92	.91	.89
3.0	.99	.94	.91	.97	.93	.90	.95	.91	.88	.92	.89	.87	.90	.88	.86	.84
4.0	.93	.88	.85	.92	.88	.84	.90	.86	.83	.88	.85	.82	.86	.84	.81	.80
5.0	.89	.83	.80	.88	.83	.79	.86	.82	.79	.84	.81	.78	.83	.80	.77	.76
6.0	.84	.79	.75	.84	.79	.75	.82	.78	.75	.81	.77	.74	.80	.76	.74	.72
7.0	.80	.75	.72	.80	.75	.71	.79	.74	.71	.78	.74	.71	.76	.73	.70	.69
8.0	.77	.72	.68	.76	.72	.68	.75	.71	.68	.75	.71	.68	.74	.70	.67	.66
9.0	.74	.69	.65	.73	.69	.65	.73	.68	.65	.72	.68	.65	.71	.67	.65	.63
10.0	.71	.66	.63	.71	.66	.63	.70	.65	.62	.69	.65	.62	.68	.65	.62	.61



C Range: 0 - 360DEG
 C Interval: 15.0DEG
 Test Speed: HIGH
 Temperature:25.3DEG
 Operators:DAMIN
 Test Date:2022-05-30

γ Range: 0 - 90DEG
 γ Interval: 1.0DEG
 Test System:EVERFINE GO-3000H_V1 SYSTEM V2.00.411
 Humidity:65.0%
 Test Distance:9.000m [K=1.0000]
 Remarks:

WEC AND CCEC

Test:U:12.017V I:0.2917A P:2.3686W PF:0.6757 Freq:60.00Hz Lamp Flux:264.931x1 lm		
NAME: 486707-MR16-2W-3000K-25°	TYPE:	WEIGHT:
SPEC.:	DIM.:	SERIAL No.:
MFR.:	SUR.:35mm	Shielding Angle:

pcc	80%			70%			50%			30%			10%			0
pw	50%	30%	10%	50%	30%	10%	50%	30%	10%	50%	30%	10%	50%	30%	10%	0
pfc	20%			20%			20%			20%			20%			0
RCR	RCR:Room Cavity Ratio						Wall Exitance Coefficients(WEC)									
0.0																
1.0	.165	.094	.030	.158	.090	.029	.145	.083	.027	.134	.077	.025	.123	.071	.023	
2.0	.156	.085	.026	.150	.083	.025	.140	.078	.024	.130	.073	.023	.121	.068	.022	
3.0	.147	.078	.023	.142	.076	.023	.133	.072	.022	.125	.068	.021	.117	.065	.020	
4.0	.138	.072	.021	.134	.070	.021	.127	.067	.020	.120	.064	.019	.113	.061	.019	
5.0	.131	.067	.019	.127	.065	.019	.121	.063	.019	.115	.060	.018	.109	.058	.017	
6.0	.124	.062	.018	.121	.061	.018	.115	.059	.017	.110	.057	.017	.105	.055	.016	
7.0	.118	.058	.017	.115	.057	.016	.110	.056	.016	.105	.054	.016	.101	.052	.015	
8.0	.112	.055	.015	.110	.054	.015	.105	.053	.015	.101	.051	.015	.097	.050	.015	
9.0	.107	.052	.014	.105	.051	.014	.101	.050	.014	.097	.049	.014	.094	.048	.014	
10.0	.103	.049	.014	.101	.049	.014	.097	.048	.013	.094	.047	.013	.091	.046	.013	

pcc	80%			70%			50%			30%			10%			0
pw	50%	30%	10%	50%	30%	10%	50%	30%	10%	50%	30%	10%	50%	30%	10%	0
pfc	20%			20%			20%			20%			20%			0
RCR	RCR:Room Cavity Ratio						Ceiling Cavity Exitance Coefficients(CCEC)									
0.0	.190	.190	.190	.163	.163	.163	.111	.111	.111	.064	.064	.064	.020	.020	.020	
1.0	.170	.157	.146	.146	.135	.126	.100	.093	.087	.057	.054	.050	.018	.017	.016	
2.0	.154	.133	.114	.132	.114	.099	.090	.079	.069	.052	.046	.040	.017	.015	.013	
3.0	.141	.113	.092	.121	.098	.080	.083	.068	.056	.048	.040	.033	.015	.013	.011	
4.0	.130	.099	.075	.111	.085	.065	.076	.059	.046	.044	.035	.027	.014	.011	.009	
5.0	.120	.087	.062	.103	.075	.054	.071	.052	.038	.041	.031	.023	.013	.010	.007	
6.0	.112	.077	.052	.096	.067	.045	.066	.047	.032	.038	.027	.019	.012	.009	.006	
7.0	.105	.069	.044	.090	.060	.039	.062	.042	.027	.036	.025	.016	.012	.008	.005	
8.0	.099	.063	.038	.085	.054	.033	.059	.038	.024	.034	.023	.014	.011	.007	.005	
9.0	.093	.057	.033	.080	.050	.029	.056	.035	.020	.032	.021	.012	.011	.007	.004	
10.0	.088	.053	.029	.076	.046	.025	.053	.032	.018	.031	.019	.011	.010	.006	.004	

C Range: 0 - 360DEG
 C Interval: 15.0DEG
 Test Speed: HIGH
 Temperature:25.3DEG
 Operators:DAMIN
 Test Date:2022-05-30

γ Range: 0 - 90DEG
 γ Interval: 1.0DEG
 Test System:EVERFINE GO-3000H_V1 SYSTEM V2.00.411
 Humidity:65.0%
 Test Distance:9.000m [K=1.0000]
 Remarks:

UGR(Unified Glare Rating) Table

Test:U:12.017V I:0.2917A P:2.3686W PF:0.6757 Freq:60.00Hz Lamp Flux:264.931x1 lm										
NAME: 486707-MR16-2W-3000K-25°					TYPE:			WEIGHT:		
SPEC.:					DIM.:			SERIAL No.:		
MFR.:					SUR.:35mm			Shielding Angle:		
ceiling/cavity	0.7	0.7	0.5	0.5	0.3	0.7	0.7	0.5	0.5	0.3
walls	0.5	0.3	0.5	0.3	0.3	0.5	0.3	0.5	0.3	0.3
working plane	0.2	0.2	0.2	0.2	0.2	0.2	0.2	0.2	0.2	0.2
Room dimensions	Viewed crosswise					Viewed endwise				
x = 2H y = 2H	17.5	18.3	17.7	18.5	18.6	16.9	17.8	17.1	17.9	18.1
3H	18.3	19.1	18.6	19.3	19.5	17.0	17.8	17.2	18.0	18.1
4H	18.5	19.3	18.8	19.5	19.7	17.0	17.7	17.2	17.9	18.1
6H	18.7	19.4	19.0	19.6	19.9	16.9	17.6	17.2	17.8	18.0
8H	18.7	19.4	19.0	19.6	19.9	16.8	17.5	17.1	17.7	18.0
12H	18.7	19.3	19.0	19.6	19.9	16.8	17.4	17.1	17.7	18.0
4H 2H	17.6	18.3	17.9	18.5	18.8	17.1	17.8	17.3	18.0	18.2
3H	18.6	19.3	18.9	19.5	19.8	17.2	17.8	17.5	18.1	18.4
4H	18.9	19.5	19.3	19.8	20.1	17.2	17.7	17.5	18.0	18.3
6H	19.1	19.7	19.5	20.0	20.3	17.1	17.6	17.4	17.9	18.3
8H	19.2	19.7	19.6	20.0	20.4	17.0	17.5	17.4	17.8	18.2
12H	19.2	19.6	19.6	20.0	20.4	17.0	17.4	17.4	17.8	18.2
8H 4H	18.9	19.3	19.3	19.7	20.1	17.2	17.6	17.6	18.0	18.4
6H	19.1	19.5	19.5	19.9	20.3	17.1	17.5	17.5	17.8	18.3
8H	19.1	19.5	19.6	19.9	20.3	17.0	17.4	17.4	17.8	18.2
12H	19.2	19.5	19.6	19.9	20.4	16.9	17.2	17.4	17.7	18.2
12H 4H	18.8	19.2	19.2	19.6	20.0	17.1	17.6	17.5	17.9	18.3
6H	19.0	19.4	19.5	19.8	20.2	17.0	17.4	17.5	17.8	18.2
8H	19.1	19.4	19.6	19.8	20.3	17.0	17.3	17.4	17.7	18.2
Variations with the observer position at spacings:										
S = 1.0H	+ 1.1 / - 1.3					+ 2.2 / - 3.1				
1.5H	+ 2.6 / - 1.2					+ 4.1 / - 2.6				
2.0H	+ 0.6 / - 0.7					+ 1.8 / - 1.4				

CIE Pub.117, 264.9 lm Total Lamp Luminous Flux Corrected (8log(F/F0) = -4.6)
Area: 0.001 m2

C Range: 0 - 360DEG
C Interval: 15.0DEG
Test Speed: HIGH
Temperature:25.3DEG
Operators:DAMIN
Test Date:2022-05-30

γ Range: 0 - 90DEG
γ Interval: 1.0DEG
Test System:EVERFINE GO-3000H_V1 SYSTEM V2.00.411
Humidity:65.0%
Test Distance:9.000m [K=1.0000]
Remarks:

UTILIZATION FACTORS TABLE

Test:U:12.017V I:0.2917A P:2.3686W PF:0.6757 Freq:60.00Hz Lamp Flux:264.931x1 lm		
NAME: 486707-MR16-2W-3000K-25°	TYPE:	WEIGHT:
SPEC.:	DIM.:	SERIAL No.:
MFR.:	SUR.:35mm	Shielding Angle:

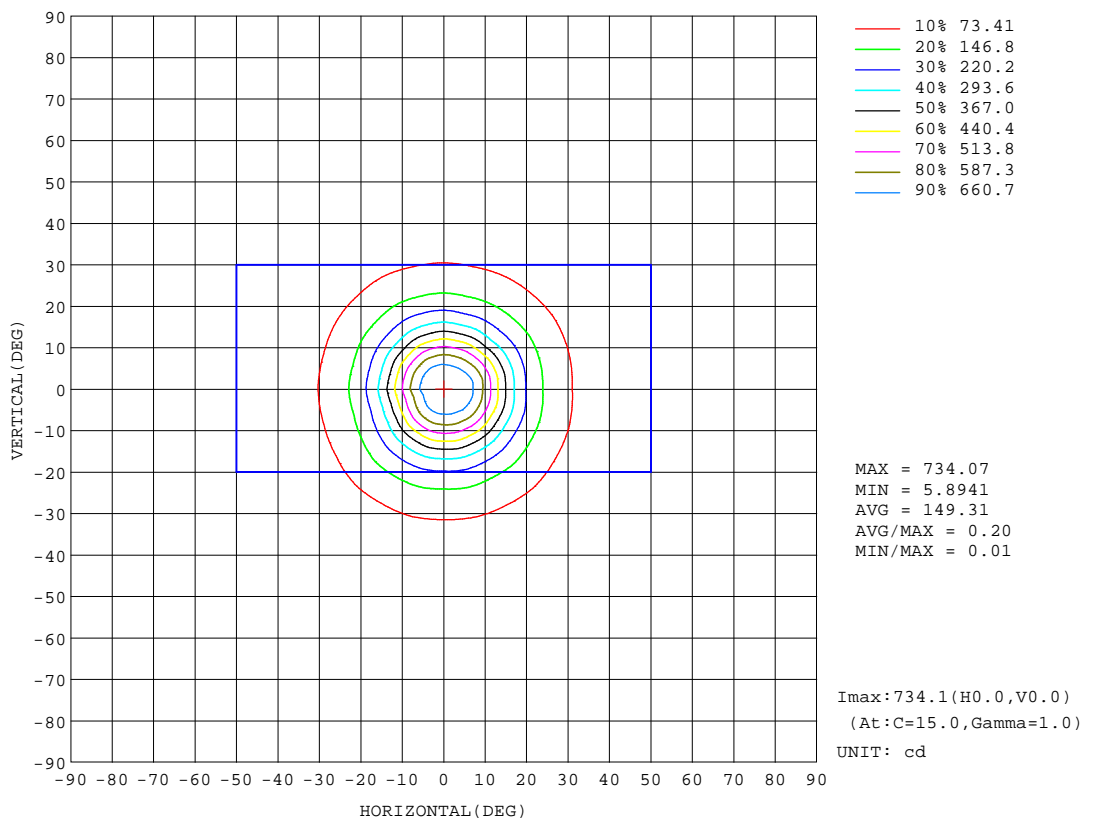
REFLECTANCE										
Ceiling	0.8	0.8	0.8	0.7	0.7	0.7	0.5	0.5	0.5	0
Walls	0.7	0.5	0.3	0.7	0.5	0.3	0.7	0.5	0.3	0
Working plane	0.2	0.2	0.2	0.2	0.2	0.2	0.2	0.2	0.2	0
ROOM INDEX	UTILIZATION FACTORS(PERCENT) k(RI) x RCR = 5									
k = 0.60	87	81	77	86	80	77	86	80	76	73
0.80	94	88	85	94	88	84	92	87	84	80
1.00	99	93	89	98	93	89	96	92	89	85
1.25	103	97	94	102	97	94	100	96	93	88
1.50	105	101	97	104	100	97	102	98	96	91
2.00	108	104	101	107	103	100	104	101	98	93
2.50	110	106	103	108	105	102	105	102	100	94
3.00	112	108	105	110	107	104	106	104	102	96
4.00	114	111	109	112	109	107	108	106	105	97
5.00	115	113	111	113	111	109	109	107	106	99
ROOM INDEX	UF(total)									Direct
According to DIN EN 13032-2 2004			Suspended				SHRNOM = 1.25			

C Range: 0 - 360DEG
 C Interval: 15.0DEG
 Test Speed: HIGH
 Temperature:25.3DEG
 Operators:DAMIN
 Test Date:2022-05-30

γ Range: 0 - 90DEG
 γ Interval: 1.0DEG
 Test System:EVERFINE GO-3000H_V1 SYSTEM V2.00.411
 Humidity:65.0%
 Test Distance:9.000m [K=1.0000]
 Remarks:

ISOCANDELA DIAGRAM

Test:U:12.017V I:0.2917A P:2.3686W PF:0.6757 Freq:60.00Hz Lamp Flux:264.931x1 lm		
NAME: 486707-MR16-2W-3000K-25°	TYPE:	WEIGHT:
SPEC.:	DIM.:	SERIAL No.:
MFR.:	SUR.:35mm	Shielding Angle:



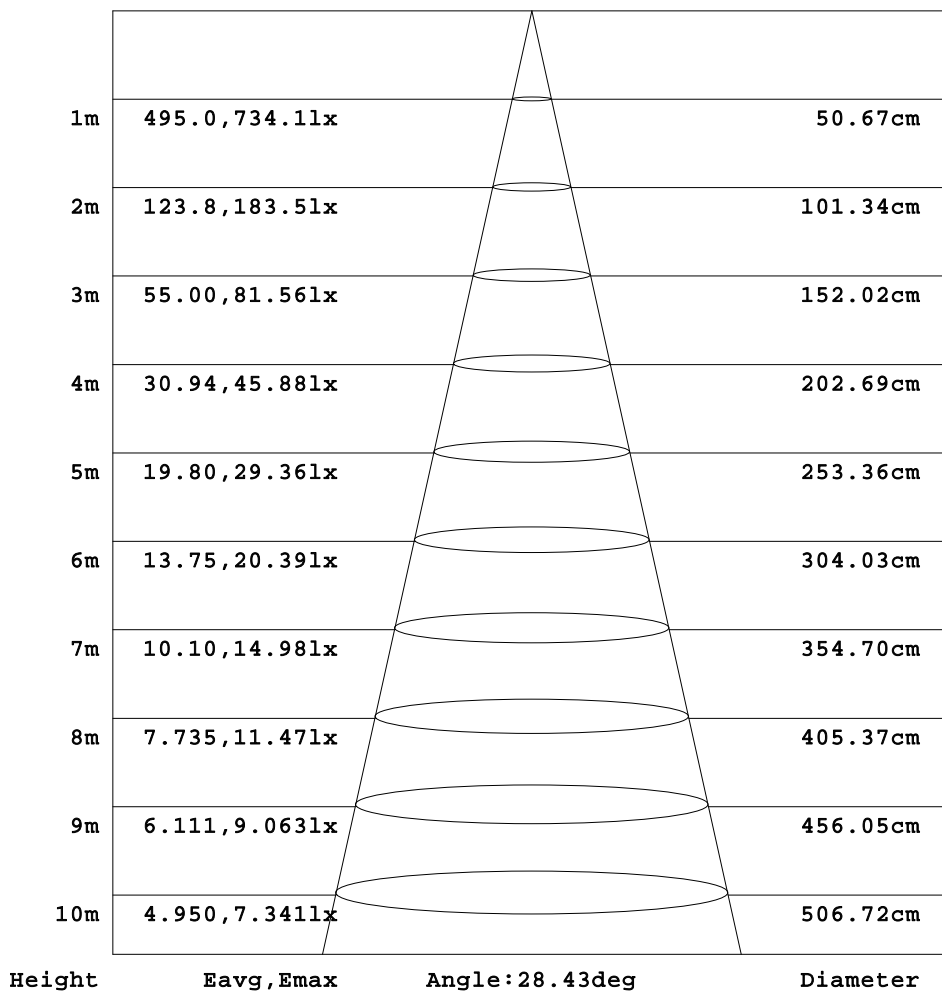
C Range: 0 - 360DEG
 C Interval: 15.0DEG
 Test Speed: HIGH
 Temperature:25.3DEG
 Operators:DAMIN
 Test Date:2022-05-30

γ Range: 0 - 90DEG
 γ Interval: 1.0DEG
 Test System:EVERFINE GO-3000H_V1 SYSTEM V2.00.411
 Humidity:65.0%
 Test Distance:9.000m [K=1.0000]
 Remarks:

AAI Figure

Test:U:12.017V I:0.2917A P:2.3686W PF:0.6757 Freq:60.00Hz Lamp Flux:264.931x1 lm		
NAME: 486707-MR16-2W-3000K-25°	TYPE:	WEIGHT:
SPEC.:	DIM.:	SERIAL No.:
MFR.:	SUR.:35mm	Shielding Angle:

Flux out:111.7 lm



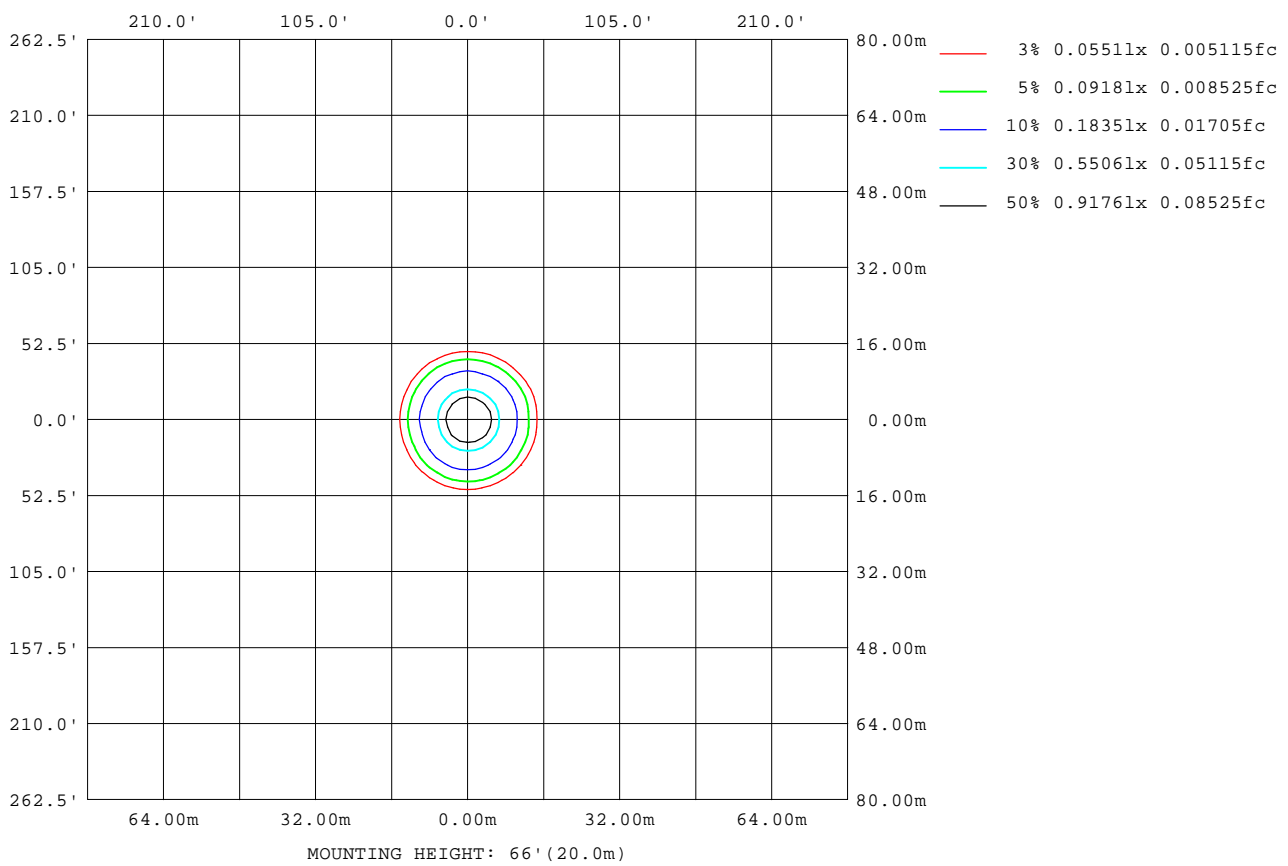
Note:The Curves indicate the illuminated area and the average illumination when the luminaire is at different distance.

C Range: 0 - 360DEG
C Interval: 15.0DEG
Test Speed: HIGH
Temperature:25.3DEG
Operators:DAMIN
Test Date:2022-05-30

γ Range: 0 - 90DEG
γ Interval: 1.0DEG
Test System:EVERFINE GO-3000H_V1 SYSTEM V2.00.411
Humidity:65.0%
Test Distance:9.000m [K=1.0000]
Remarks:

ISOLUX DIAGRAM

Test:U:12.017V I:0.2917A P:2.3686W PF:0.6757 Freq:60.00Hz Lamp Flux:264.931lx1 lm		
NAME: 486707-MR16-2W-3000K-25°	TYPE:	WEIGHT:
SPEC.:	DIM.:	SERIAL No.:
MFR.:	SUR.:35mm	Shielding Angle:



C Range: 0 - 360DEG
 C Interval: 15.0DEG
 Test Speed: HIGH
 Temperature:25.3DEG
 Operators:DAMIN
 Test Date:2022-05-30

γ Range: 0 - 90DEG
 γ Interval: 1.0DEG
 Test System:EVERFINE GO-3000H_V1 SYSTEM V2.00.411
 Humidity:65.0%
 Test Distance:9.000m [K=1.0000]
 Remarks:

LED Avg.L Report

Test:U:12.017V I:0.2917A P:2.3686W PF:0.6757 Freq:60.00Hz Lamp Flux:264.931x1 lm		
NAME: 486707-MR16-2W-3000K-25°	TYPE:	WEIGHT:
SPEC.:	DIM.:	SERIAL No.:
MFR.:	SUR.:35mm	Shielding Angle:

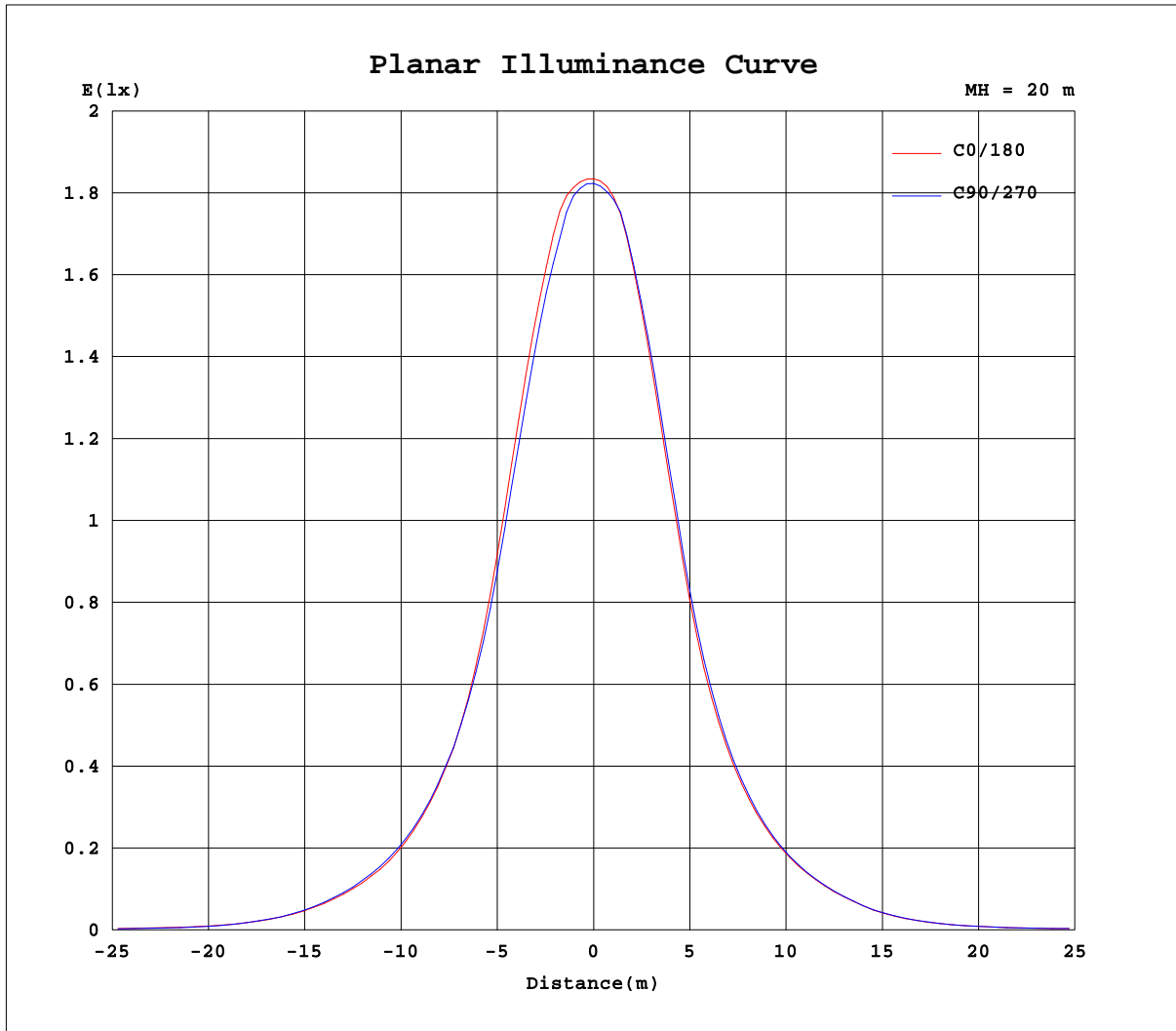
AvgL	cd/m2
L_0~180(65)av	11288
L_0~180(75)av	7105
L_0~180(85)av	3935
L_90~270(65)av	5846
L_90~270(75)av	2116
L_90~270(85)av	0
L_45(65)av	10989
L_45(75)av	3719
L_45(85)av	0

Standard: GB/T 29293-2012

C Range: 0 - 360DEG
C Interval: 15.0DEG
Test Speed: HIGH
Temperature:25.3DEG
Operators:DAMIN
Test Date:2022-05-30

γ Range: 0 - 90DEG
γ Interval: 1.0DEG
Test System:EVERFINE GO-3000H_V1 SYSTEM V2.00.411
Humidity:65.0%
Test Distance:9.000m [K=1.0000]
Remarks:

Planar Illuminance Curve



C Range: 0 - 360DEG
C Interval: 15.0DEG
Test Speed: HIGH
Temperature: 25.3DEG
Operators: DAMIN
Test Date: 2022-05-30

γ Range: 0 - 90DEG
 γ Interval: 1.0DEG
Test System: EVERFINE GO-3000H_V1 SYSTEM V2.00.411
Humidity: 65.0%
Test Distance: 9.000m [K=1.0000]
Remarks:

LUMINOUS DISTRIBUTION INTENSITY DATA

Test:U:12.017V I:0.2917A P:2.3686W PF:0.6757 Freq:60.00Hz Lamp Flux:264.931x1 lm		
NAME: 486707-MR16-2W-3000K-25°	TYPE:	WEIGHT:
SPEC.:	DIM.:	SERIAL No.:
MFR.:	SUR.:35mm	Shielding Angle:

Table--1

UNIT: cd

C(DEG) γ (DEG)	0	15	30	45	60	75	90	105	120	135	150	165	180	195	210	225	240	255	270
0	730	730	730	730	730	730	730	730	730	730	730	730	730	730	730	730	730	730	730
5	707	706	701	699	693	690	685	686	685	681	672	667	679	679	682	682	686	685	686
10	563	567	564	561	550	545	539	539	529	521	505	496	510	509	512	512	520	519	524
15	362	371	364	368	359	359	349	351	341	335	314	306	318	310	319	317	327	324	330
20	213	223	221	225	221	222	215	218	216	211	198	187	193	190	195	196	201	200	200
25	131	136	136	140	136	138	135	137	134	133	123	117	120	117	120	119	123	122	123
30	80.8	84.4	84.0	86.4	85.2	87.0	84.9	86.2	82.7	81.8	75.8	74.1	75.3	73.6	75.4	75.2	77.5	75.8	76.7
35	47.4	50.0	49.7	51.6	49.5	50.9	49.7	50.5	48.2	47.7	44.3	42.3	43.0	41.9	42.8	43.3	44.2	43.0	43.8
40	23.9	24.3	24.8	25.0	24.5	24.2	24.5	25.2	24.5	23.2	22.4	20.5	21.2	21.3	20.8	21.5	21.2	21.7	21.5
45	11.4	11.5	11.0	10.8	10.8	10.8	11.1	11.3	11.1	10.6	10.2	9.93	10.5	10.3	9.90	10.0	10.4	10.6	10.6
50	7.11	7.27	6.88	6.36	6.43	6.51	6.43	6.44	6.92	6.95	6.66	6.67	6.65	6.81	6.57	6.83	7.01	7.00	6.75
55	6.18	6.35	6.10	5.62	5.55	5.63	5.50	5.62	6.03	6.26	6.04	6.09	5.93	6.11	5.91	6.09	6.08	6.11	5.93
60	5.76	5.87	5.61	5.13	4.73	3.57	3.40	3.50	5.47	5.72	5.51	5.50	5.39	5.48	5.31	5.39	5.36	3.73	3.36
65	4.96	5.01	4.88	4.37	2.93	2.58	2.43	2.52	2.96	4.92	4.95	4.82	4.58	4.60	4.55	4.56	2.89	2.57	2.51
70	3.73	3.78	3.68	2.42	1.61	1.27	1.22	1.28	1.71	2.48	3.56	3.37	3.29	3.35	3.31	2.45	1.75	1.40	1.35
75	2.06	2.10	1.96	0.93	0.66	0.58	0.56	0.59	0.64	0.93	1.61	1.63	1.61	1.63	1.53	0.92	0.62	0.56	0.54
80	1.19	1.12	0.51	0.15	0.02	0.02	0.03	0.02	0.02	0.13	0.38	0.81	0.84	0.83	0.37	0.13	0.01	0.01	0.01
85	0.43	0.20	0.00	0.00	0.00	0.00	0.00	0.00	0.00	0.00	0.00	0.05	0.25	0.13	0.00	0.00	0.00	0.00	0.00
90	0.00	0.00	0.00	0.00	0.00	0.00	0.00	0.00	0.00	0.00	0.00	0.00	0.00	0.00	0.00	0.00	0.00	0.00	0.00

C Range: 0 - 360DEG
C Interval: 15.0DEG
Test Speed: HIGH
Temperature:25.3DEG
Operators:DAMIN
Test Date:2022-05-30

γ Range: 0 - 90DEG
γ Interval: 1.0DEG
Test System:EVERFINE GO-3000H_V1 SYSTEM V2.00.411
Humidity:65.0%
Test Distance:9.000m [K=1.0000]
Remarks:

LUMINOUS DISTRIBUTION INTENSITY DATA

Test:U:12.017V I:0.2917A P:2.3686W PF:0.6757 Freq:60.00Hz Lamp Flux:264.931x1 lm		
NAME: 486707-MR16-2W-3000K-25°	TYPE:	WEIGHT:
SPEC.:	DIM.:	SERIAL No.:
MFR.:	SUR.:35mm	Shielding Angle:

Table--2

UNIT: cd

C(DEG) γ (DEG)	285	300	315	330	345															
0	730	730	730	730	730															
5	685	690	694	703	710															
10	525	536	546	563	576															
15	325	338	342	362	373															
20	197	204	210	220	222															
25	121	125	129	136	136															
30	75.5	78.2	80.3	83.9	83.7															
35	43.9	45.6	46.9	49.4	49.9															
40	22.5	22.3	23.1	24.3	26.0															
45	10.6	10.6	10.8	11.3	12.0															
50	6.63	6.73	6.95	6.86	6.87															
55	5.74	5.80	6.15	6.08	5.94															
60	3.70	5.24	5.59	5.61	5.46															
65	2.59	2.90	4.73	4.86	4.87															
70	1.43	1.75	2.54	3.64	3.72															
75	0.59	0.65	1.07	1.92	2.03															
80	0.01	0.01	0.23	0.59	1.17															
85	0.00	0.00	0.00	0.00	0.36															
90	0.00	0.00	0.00	0.00	0.00															

C Range: 0 - 360DEG
 C Interval: 15.0DEG
 Test Speed: HIGH
 Temperature:25.3DEG
 Operators:DAMIN
 Test Date:2022-05-30

γ Range: 0 - 90DEG
 γ Interval: 1.0DEG
 Test System:EVERFINE GO-3000H_V1 SYSTEM V2.00.411
 Humidity:65.0%
 Test Distance:9.000m [K=1.0000]
 Remarks: