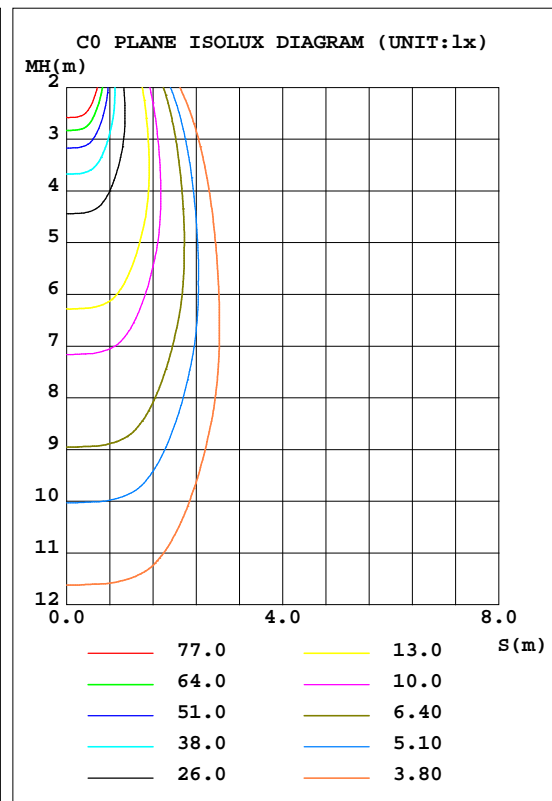
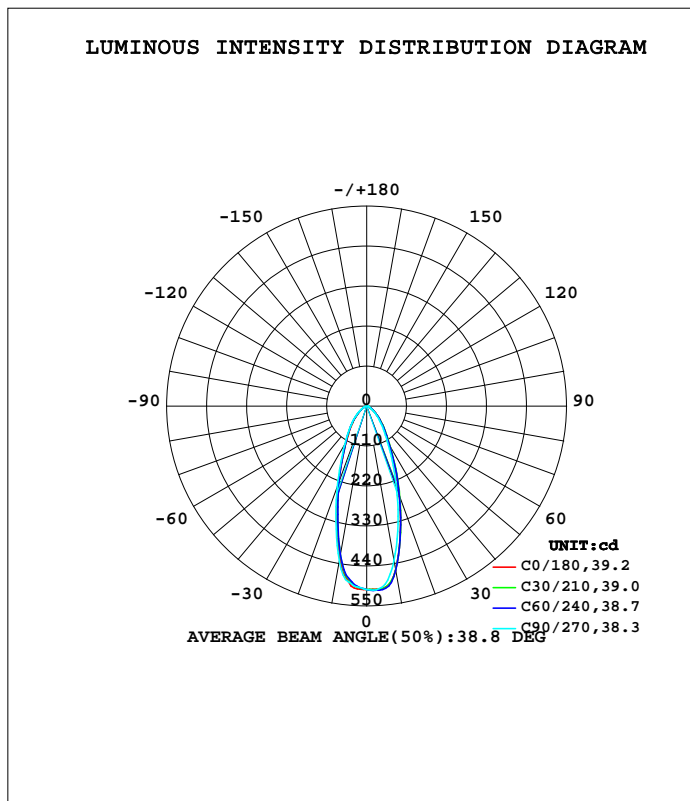


LUMINAIRE PHOTOMETRIC TEST REPORT

Test:U:11.928V I:0.4135A P:3.4917W PF:0.7079 Freq:60.00Hz Lamp Flux:343.179x1 lm		
NAME: 486735-MR16-3W-2700K-40°	TYPE:	WEIGHT:
SPEC.:	DIM.:	SERIAL No.:
MFR.:	SUR.:35mm	Shielding Angle:

DATA OF LAMP		PHOTOMETRIC DATA Eff: 98.28 lm/W			
MODEL		I _{max} (cd)	507.8	S/MH(C0/180)	0.60
NOMINAL POWER(W)	--	LOR(%)	100.0	S/MH(C90/270)	0.62
RATED VOLTAGE(V)	--	TOTAL FLUX(lm)	343.18	η UP,DN(C0-180)	0.0,49.2
NOMINAL FLUX(lm)	343.179	CIE CLASS	DIRECT	η UP,DN(C180-360)	0.0,50.8
LAMPS INSIDE	1	η up(%)	0.0	CIBSE SHR NOM	0.50
TEST VOLTAGE(V)	--	η down(%)	100.0	CIBSE SHR MAX	0.70



C Range: 0 - 360DEG
 C Interval: 15.0DEG
 Test Speed: HIGH
 Temperature:25.3DEG
 Operators:DAMIN
 Test Date:2022-04-08

γ Range: 0 - 90DEG
 γ Interval: 1.0DEG
 Test System:EVERFINE GO-3000H_V1 SYSTEM V2.00.411
 Humidity:65.0%
 Test Distance:9.000m [K=1.0000]
 Remarks:

ZONAL FLUX DIAGRAM

ZONAL FLUX DIAGRAM:

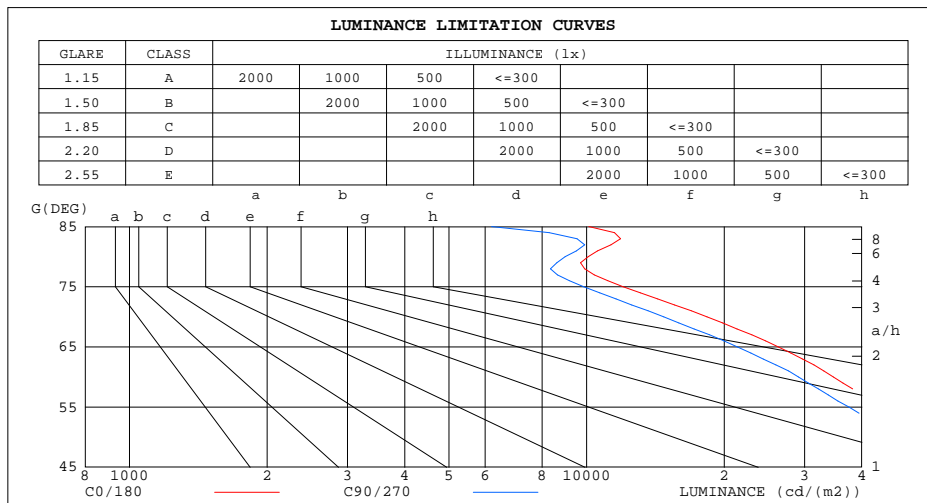
γ	C0	C45	C90	C135	C180	C225	C270	C315	γ	Φ zone	Φ total	\$lum,lamp
10	458.6	467.5	432.3	399.1	425.0	409.9	434.5	464.0	0- 10	45.46	45.46	13.2,13.2
20	264.3	272.1	241.3	220.4	228.1	219.7	237.2	277.0	10- 20	92.73	138.2	40.3,40.3
30	128.6	132.1	115.8	107.2	112.6	112.4	121.4	140.5	20- 30	79.89	218.1	63.5,63.5
40	68.47	70.78	60.96	54.47	61.59	63.70	66.95	73.31	30- 40	55.82	273.9	79.8,79.8
50	35.61	34.97	30.99	24.28	30.94	31.67	34.06	35.85	40- 50	36.16	310.1	90.4,90.4
60	17.06	15.81	14.58	10.77	14.58	13.84	16.16	15.96	50- 60	20.09	330.2	96.2,96.2
70	6.168	5.634	5.051	3.547	4.734	4.215	5.388	5.888	60- 70	9.292	339.4	98.9,98.9
80	1.722	1.716	1.561	1.395	1.504	1.509	1.592	1.793	70- 80	2.986	342.4	99.8,99.8
90	0	0	0	0	0.0088	0.0089	0.0045	0.0068	80- 90	0.7456	343.2	100,100
100									90-100			
110									100-110			
120									110-120			
130									120-130			
140									130-140			
150									140-150			
160									150-160			
170									160-170			
180									170-180			
DEG	LUMINOUS INTENSITY:cd									UNIT:lm		

C Range: 0 - 360DEG
C Interval: 15.0DEG
Test Speed: HIGH
Temperature:25.3DEG
Operators:DAMIN
Test Date:2022-04-08

γ Range: 0 - 90DEG
 γ Interval: 1.0DEG
Test System:EVERFINE GO-3000H_V1 SYSTEM V2.00.411
Humidity:65.0%
Test Distance:9.000m [K=1.0000]
Remarks:

LUMINANCE LIMITATION CURVES

Test:U:11.928V I:0.4135A P:3.4917W PF:0.7079 Freq:60.00Hz Lamp Flux:343.179x1 lm		
NAME: 486735-MR16-3W-2700K-40°	TYPE:	WEIGHT:
SPEC.:	DIM.:	SERIAL No.:
MFR.:	SUR.:35mm	Shielding Angle:



LUMINANCE cd/(m2)		
G(DEG)	C0/180	C90/270
85	10111	6196
80	10084	8973
75	12021	9862
70	18339	14744
65	26281	21394
60	34696	29110
55	44294	37520
50	56329	48136
45	71754	62137

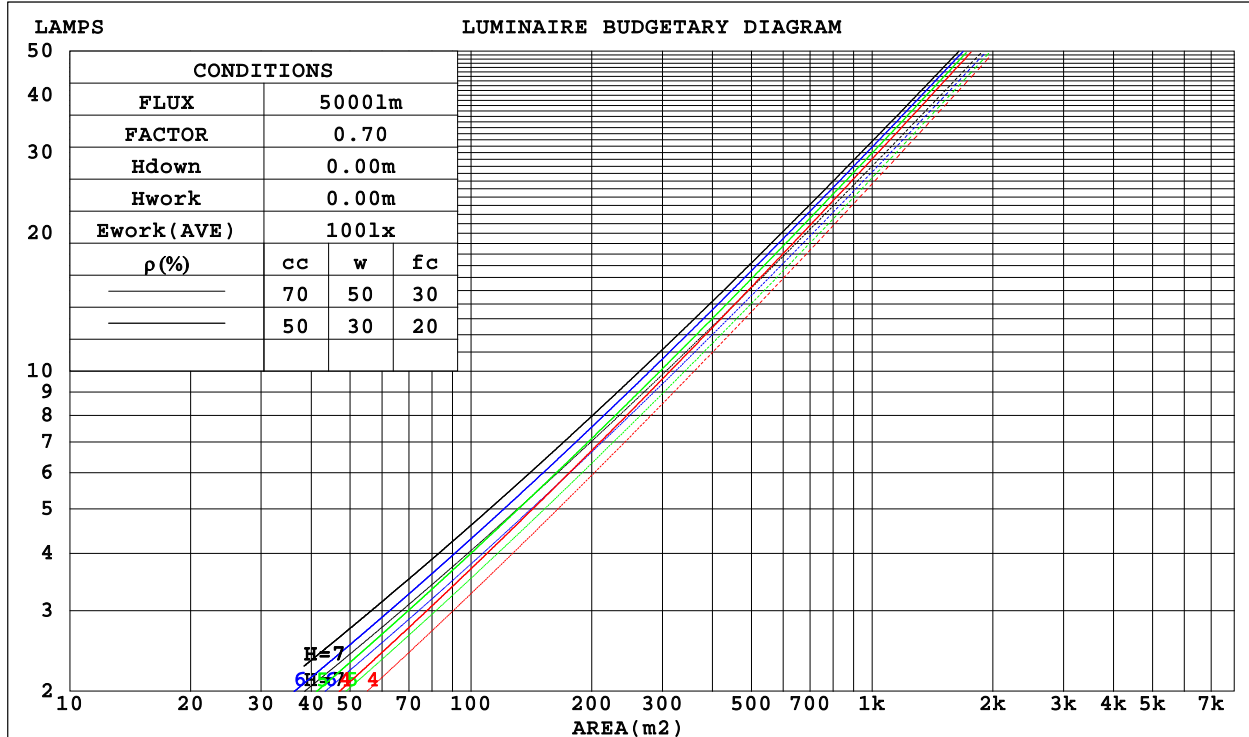
C Range: 0 - 360DEG
 C Interval: 15.0DEG
 Test Speed: HIGH
 Temperature:25.3DEG
 Operators:DAMIN
 Test Date:2022-04-08

γ Range: 0 - 90DEG
 γ Interval: 1.0DEG
 Test System:EVERFINE GO-3000H_V1 SYSTEM V2.00.411
 Humidity:65.0%
 Test Distance:9.000m [K=1.0000]
 Remarks:

CU AND LUMINAIRE BUDGETARY ESTIMATE DIAGRAM

Test:U:11.928V I:0.4135A P:3.4917W PF:0.7079 Freq:60.00Hz Lamp Flux:343.179x1 lm		
NAME: 486735-MR16-3W-2700K-40°	TYPE:	WEIGHT:
SPEC.:	DIM.:	SERIAL No.:
MFR.:	SUR.:35mm	Shielding Angle:

ρ _{cc}	80%			70%			50%			30%			10%			0
ρ _w	50%	30%	10%	50%	30%	10%	50%	30%	10%	50%	30%	10%	50%	30%	10%	0
ρ _{fc}	20%			20%			20%			20%			20%			0
RCR	RCR:Room Cavity Ratio						Coefficients of Utilization(CU)									
0.0	1.19	1.19	1.19	1.16	1.16	1.16	1.11	1.11	1.11	1.06	1.06	1.06	1.02	1.02	1.02	.00
1.0	1.10	1.07	1.05	1.08	1.05	1.03	1.04	1.02	.00	.00	.98	.97	.96	.95	.94	.92
2.0	1.01	.97	.93	.99	.95	.92	.96	.93	.90	.93	.90	.88	.90	.88	.86	.84
3.0	.94	.88	.84	.92	.87	.83	.89	.85	.82	.87	.83	.80	.85	.82	.79	.77
4.0	.87	.81	.76	.86	.80	.76	.83	.79	.75	.81	.77	.74	.80	.76	.73	.71
5.0	.81	.75	.70	.80	.74	.70	.78	.73	.69	.76	.72	.68	.75	.71	.68	.66
6.0	.76	.69	.65	.75	.69	.65	.73	.68	.64	.72	.67	.64	.71	.66	.63	.62
7.0	.71	.65	.60	.70	.64	.60	.69	.64	.60	.68	.63	.59	.67	.62	.59	.58
8.0	.67	.61	.56	.66	.60	.56	.65	.60	.56	.64	.59	.56	.63	.59	.56	.54
9.0	.63	.57	.53	.63	.57	.53	.62	.56	.53	.61	.56	.53	.60	.56	.52	.51
10.0	.60	.54	.50	.60	.54	.50	.59	.53	.50	.58	.53	.50	.57	.53	.50	.48



C Range: 0 - 360DEG
 C Interval: 15.0DEG
 Test Speed: HIGH
 Temperature:25.3DEG
 Operators:DAMIN
 Test Date:2022-04-08

γ Range: 0 - 90DEG
 γ Interval: 1.0DEG
 Test System:EVERFINE GO-3000H_V1 SYSTEM V2.00.411
 Humidity:65.0%
 Test Distance:9.000m [K=1.0000]
 Remarks:

WEC AND CCEC

Test:U:11.928V I:0.4135A P:3.4917W PF:0.7079 Freq:60.00Hz Lamp Flux:343.179x1 lm		
NAME: 486735-MR16-3W-2700K-40°	TYPE:	WEIGHT:
SPEC.:	DIM.:	SERIAL No.:
MFR.:	SUR.:35mm	Shielding Angle:

pcc	80%			70%			50%			30%			10%			0
pw	50%	30%	10%	50%	30%	10%	50%	30%	10%	50%	30%	10%	50%	30%	10%	0
pfc	20%			20%			20%			20%			20%			0
RCR	RCR:Room Cavity Ratio						Wall Exitance Coefficients(WEC)									
0.0																
1.0	.197	.112	.035	.190	.108	.034	.177	.102	.032	.166	.096	.031	.155	.090	.029	
2.0	.189	.103	.032	.183	.101	.031	.172	.096	.030	.162	.091	.029	.153	.087	.027	
3.0	.179	.095	.029	.174	.093	.028	.165	.089	.027	.156	.086	.026	.148	.082	.025	
4.0	.169	.088	.026	.165	.086	.026	.157	.083	.025	.150	.080	.024	.143	.078	.024	
5.0	.160	.082	.024	.156	.080	.023	.149	.078	.023	.143	.075	.022	.137	.073	.022	
6.0	.152	.076	.022	.148	.075	.022	.142	.073	.021	.136	.071	.021	.131	.069	.020	
7.0	.144	.071	.020	.141	.070	.020	.135	.068	.020	.130	.067	.019	.125	.065	.019	
8.0	.136	.067	.019	.134	.066	.019	.129	.064	.018	.124	.063	.018	.120	.062	.018	
9.0	.130	.063	.018	.128	.062	.017	.123	.061	.017	.119	.060	.017	.115	.058	.017	
10.0	.124	.059	.016	.122	.059	.016	.118	.058	.016	.114	.057	.016	.111	.056	.016	

pcc	80%			70%			50%			30%			10%			0
pw	50%	30%	10%	50%	30%	10%	50%	30%	10%	50%	30%	10%	50%	30%	10%	0
pfc	20%			20%			20%			20%			20%			0
RCR	RCR:Room Cavity Ratio						Ceiling Cavity Exitance Coefficients(CCEC)									
0.0	.190	.190	.190	.163	.163	.163	.111	.111	.111	.064	.064	.064	.020	.020	.020	
1.0	.172	.157	.143	.148	.135	.123	.101	.093	.085	.058	.054	.050	.019	.017	.016	
2.0	.159	.132	.110	.136	.114	.095	.093	.079	.067	.054	.046	.039	.017	.015	.013	
3.0	.147	.114	.087	.126	.098	.076	.087	.068	.053	.050	.040	.031	.016	.013	.010	
4.0	.137	.099	.070	.118	.086	.061	.081	.060	.043	.047	.035	.025	.015	.011	.008	
5.0	.129	.088	.058	.111	.076	.050	.076	.053	.035	.044	.031	.021	.014	.010	.007	
6.0	.121	.079	.048	.104	.068	.042	.072	.048	.030	.042	.028	.018	.013	.009	.006	
7.0	.115	.071	.041	.099	.062	.035	.068	.043	.025	.040	.025	.015	.013	.008	.005	
8.0	.109	.065	.035	.094	.056	.030	.065	.040	.022	.038	.023	.013	.012	.008	.004	
9.0	.103	.060	.030	.089	.052	.027	.062	.036	.019	.036	.022	.011	.012	.007	.004	
10.0	.098	.055	.027	.085	.048	.023	.059	.034	.017	.034	.020	.010	.011	.007	.003	

C Range: 0 - 360DEG
 C Interval: 15.0DEG
 Test Speed: HIGH
 Temperature:25.3DEG
 Operators:DAMIN
 Test Date:2022-04-08

γ Range: 0 - 90DEG
 γ Interval: 1.0DEG
 Test System:EVERFINE GO-3000H_V1 SYSTEM V2.00.411
 Humidity:65.0%
 Test Distance:9.000m [K=1.0000]
 Remarks:

UGR(Unified Glare Rating) Table

Test:U:11.928V I:0.4135A P:3.4917W PF:0.7079 Freq:60.00Hz Lamp Flux:343.179x1 lm										
NAME: 486735-MR16-3W-2700K-40°					TYPE:			WEIGHT:		
SPEC.:					DIM.:			SERIAL No.:		
MFR.:					SUR.:35mm			Shielding Angle:		
ceiling/cavity	0.7	0.7	0.5	0.5	0.3	0.7	0.7	0.5	0.5	0.3
walls	0.5	0.3	0.5	0.3	0.3	0.5	0.3	0.5	0.3	0.3
working plane	0.2	0.2	0.2	0.2	0.2	0.2	0.2	0.2	0.2	0.2
Room dimensions	Viewed crosswise					Viewed endwise				
x = 2H y = 2H	23.9	25.0	24.2	25.1	25.3	23.4	24.4	23.6	24.6	24.8
3H	24.2	25.1	24.4	25.3	25.5	23.6	24.6	23.9	24.8	25.0
4H	24.2	25.1	24.5	25.3	25.5	23.6	24.5	23.9	24.7	25.0
6H	24.2	25.0	24.5	25.3	25.5	23.6	24.4	23.9	24.7	24.9
8H	24.2	25.0	24.5	25.2	25.5	23.6	24.4	23.9	24.7	24.9
12H	24.1	24.9	24.5	25.2	25.5	23.6	24.3	23.9	24.6	24.9
4H 2H	24.0	24.9	24.3	25.1	25.3	23.5	24.4	23.8	24.7	24.9
3H	24.3	25.1	24.6	25.4	25.6	23.8	24.6	24.1	24.9	25.2
4H	24.4	25.1	24.7	25.4	25.7	23.9	24.6	24.2	24.9	25.2
6H	24.4	25.0	24.7	25.3	25.7	23.9	24.5	24.2	24.8	25.2
8H	24.4	25.0	24.8	25.3	25.7	23.9	24.5	24.3	24.8	25.2
12H	24.4	24.9	24.8	25.3	25.7	23.9	24.4	24.3	24.8	25.2
8H 4H	24.3	24.9	24.7	25.2	25.6	23.8	24.4	24.2	24.7	25.1
6H	24.3	24.8	24.8	25.2	25.6	23.8	24.3	24.3	24.7	25.1
8H	24.4	24.8	24.8	25.2	25.7	23.9	24.3	24.3	24.7	25.2
12H	24.4	24.8	24.9	25.2	25.7	23.9	24.3	24.4	24.7	25.2
12H 4H	24.2	24.8	24.7	25.2	25.5	23.8	24.3	24.2	24.7	25.1
6H	24.3	24.7	24.8	25.1	25.6	23.8	24.2	24.3	24.7	25.1
8H	24.4	24.7	24.8	25.2	25.6	23.9	24.3	24.4	24.7	25.2
Variations with the observer position at spacings:										
S = 1.0H	+ 1.0 / - 1.5					+ 1.1 / - 1.6				
1.5H	+ 1.1 / - 1.0					+ 1.0 / - 1.1				
2.0H	+ 2.1 / - 1.9					+ 2.0 / - 1.7				

CIE Pub.117, 343.2 lm Total Lamp Luminous Flux Corrected (8log(F/F0) = -3.7)
Area: 0.001 m2

C Range: 0 - 360DEG
C Interval: 15.0DEG
Test Speed: HIGH
Temperature:25.3DEG
Operators:DAMIN
Test Date:2022-04-08

γ Range: 0 - 90DEG
γ Interval: 1.0DEG
Test System:EVERFINE GO-3000H_V1 SYSTEM V2.00.411
Humidity:65.0%
Test Distance:9.000m [K=1.0000]
Remarks:

UTILIZATION FACTORS TABLE

Test:U:11.928V I:0.4135A P:3.4917W PF:0.7079 Freq:60.00Hz Lamp Flux:343.179x1 lm		
NAME: 486735-MR16-3W-2700K-40°	TYPE:	WEIGHT:
SPEC.:	DIM.:	SERIAL No.:
MFR.:	SUR.:35mm	Shielding Angle:

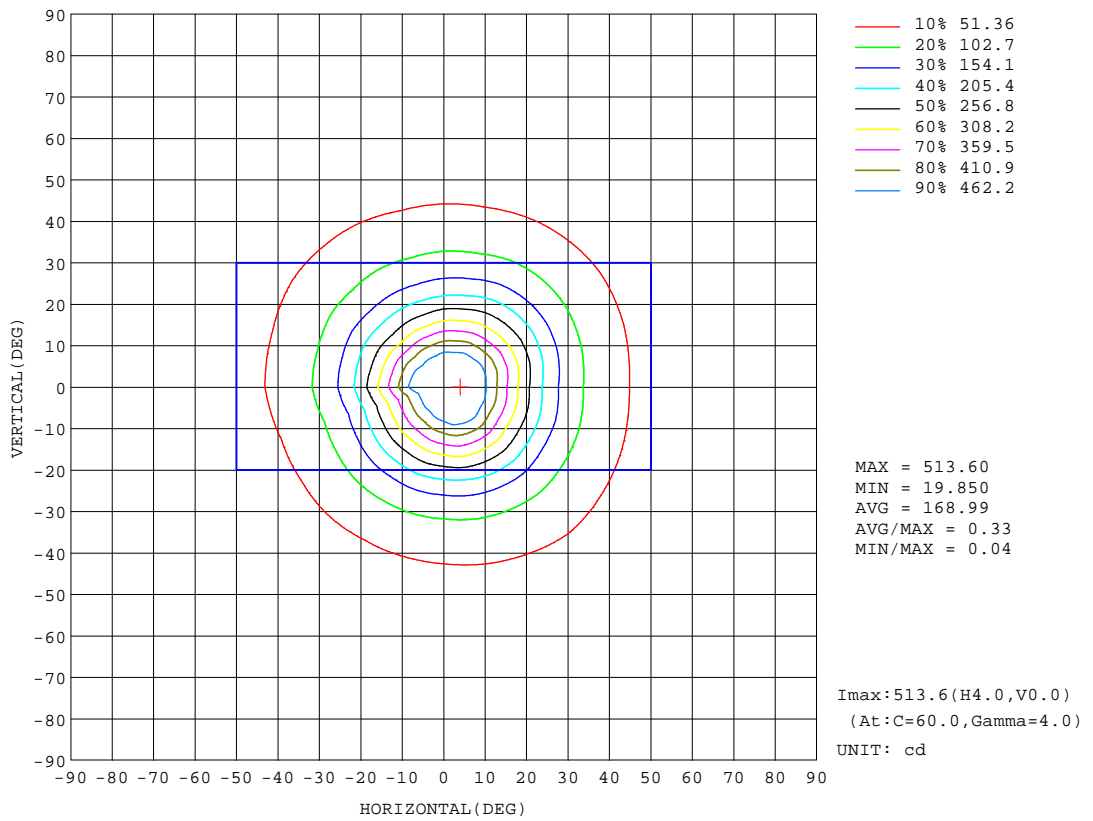
REFLECTANCE										
Ceiling	0.8	0.8	0.8	0.7	0.7	0.7	0.5	0.5	0.5	0
Walls	0.7	0.5	0.3	0.7	0.5	0.3	0.7	0.5	0.3	0
Working plane	0.2	0.2	0.2	0.2	0.2	0.2	0.2	0.2	0.2	0
ROOM INDEX	UTILIZATION FACTORS(PERCENT) k(RI) x RCR = 5									
k = 0.60	79	71	66	78	71	66	77	70	66	62
0.80	87	80	75	87	80	75	85	79	75	70
1.00	93	86	82	92	86	81	91	86	81	76
1.25	98	92	87	97	91	87	95	90	86	81
1.50	102	96	91	100	95	91	98	93	90	85
2.00	105	100	96	104	99	96	101	97	94	88
2.50	108	103	99	106	102	98	103	99	97	90
3.00	110	106	102	108	104	101	104	101	99	92
4.00	112	109	106	110	107	105	106	104	102	94
5.00	114	111	108	111	109	107	107	105	104	96
ROOM INDEX	UF(total)									Direct
According to DIN EN 13032-2 2004			Suspended				SHRNOM = 1.25			

C Range: 0 - 360DEG
C Interval: 15.0DEG
Test Speed: HIGH
Temperature:25.3DEG
Operators:DAMIN
Test Date:2022-04-08

γ Range: 0 - 90DEG
γ Interval: 1.0DEG
Test System:EVERFINE GO-3000H_V1 SYSTEM V2.00.411
Humidity:65.0%
Test Distance:9.000m [K=1.0000]
Remarks:

ISOCANDELA DIAGRAM

Test:U:11.928V I:0.4135A P:3.4917W PF:0.7079 Freq:60.00Hz Lamp Flux:343.179x1 lm		
NAME: 486735-MR16-3W-2700K-40°	TYPE:	WEIGHT:
SPEC.:	DIM.:	SERIAL No.:
MFR.:	SUR.:35mm	Shielding Angle:



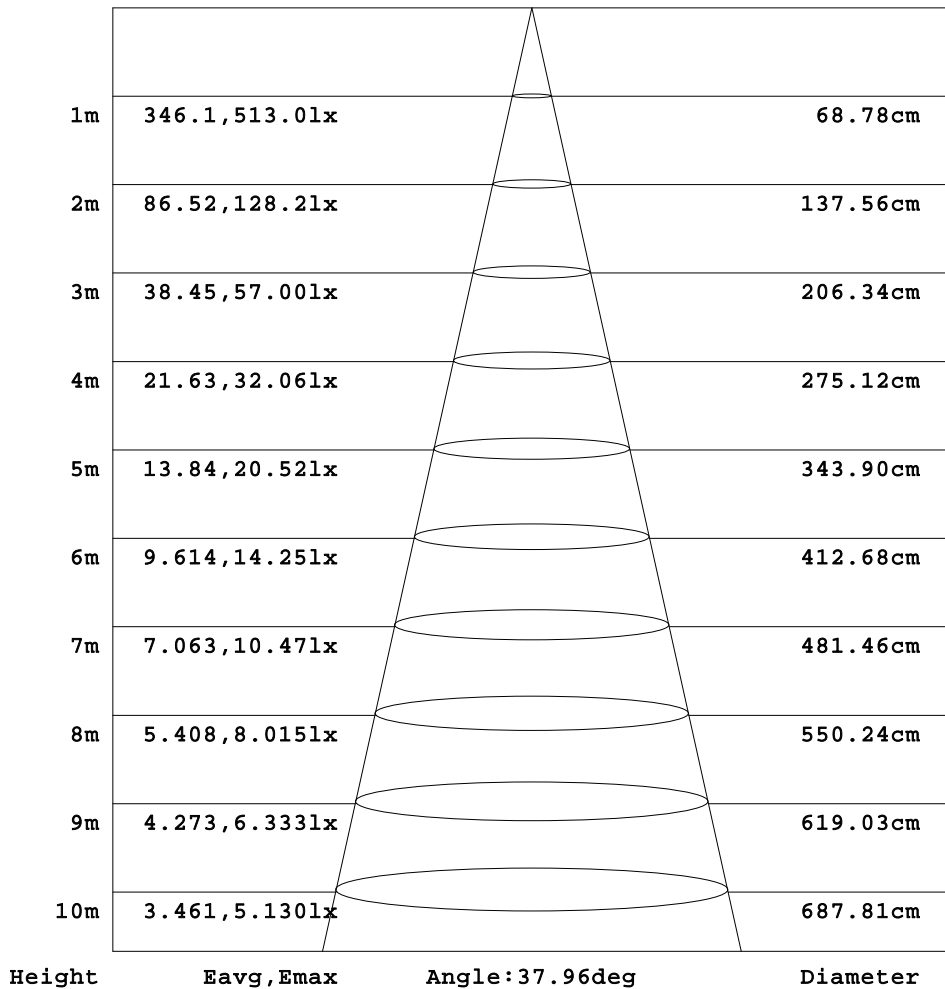
C Range: 0 - 360DEG
 C Interval: 15.0DEG
 Test Speed: HIGH
 Temperature:25.3DEG
 Operators:DAMIN
 Test Date:2022-04-08

γ Range: 0 - 90DEG
 γ Interval: 1.0DEG
 Test System:EVERFINE GO-3000H_V1 SYSTEM V2.00.411
 Humidity:65.0%
 Test Distance:9.000m [K=1.0000]
 Remarks:

AAI Figure

Test:U:11.928V I:0.4135A P:3.4917W PF:0.7079 Freq:60.00Hz Lamp Flux:343.179x1 lm		
NAME: 486735-MR16-3W-2700K-40°	TYPE:	WEIGHT:
SPEC.:	DIM.:	SERIAL No.:
MFR.:	SUR.:35mm	Shielding Angle:

Flux out:128.9 lm



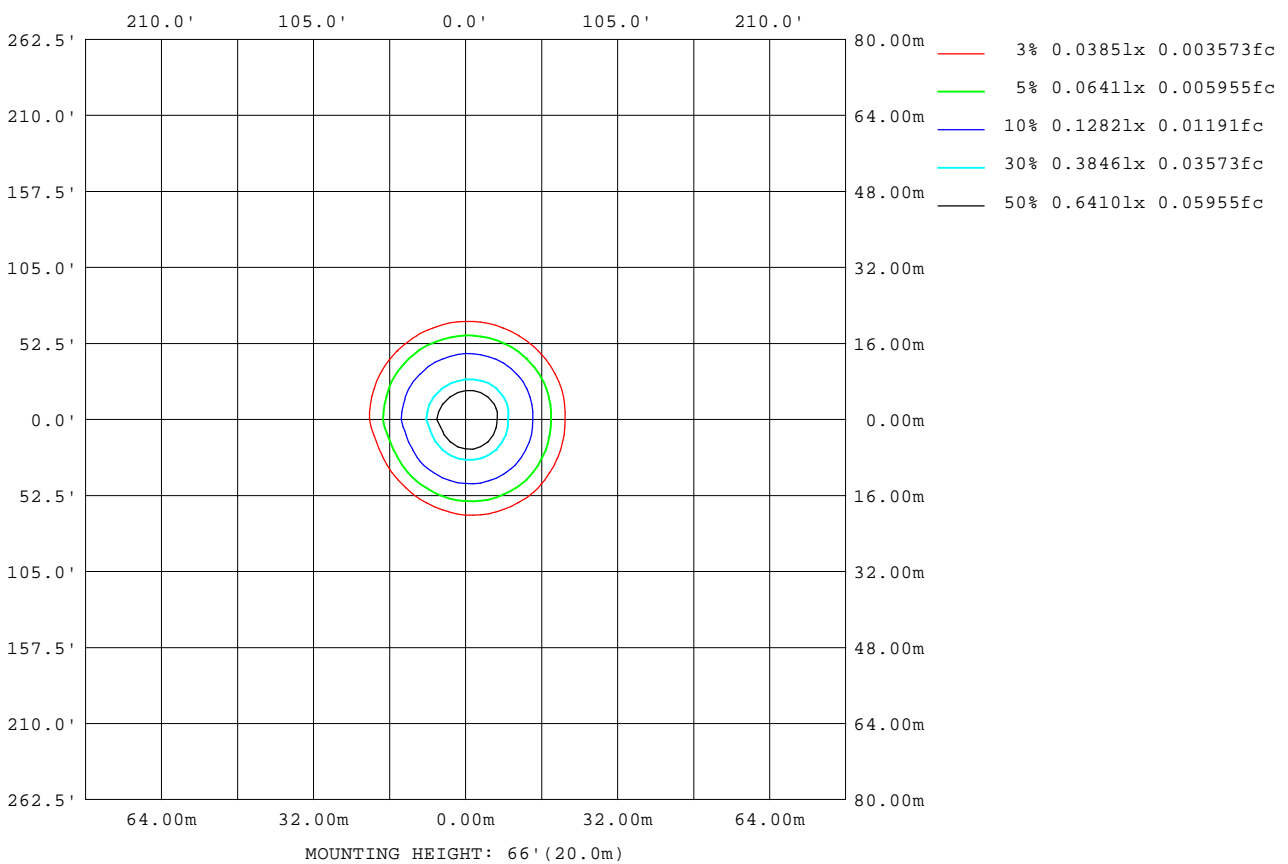
Note:The Curves indicate the illuminated area and the average illumination when the luminaire is at different distance.

C Range: 0 - 360DEG
C Interval: 15.0DEG
Test Speed: HIGH
Temperature:25.3DEG
Operators:DAMIN
Test Date:2022-04-08

γ Range: 0 - 90DEG
γ Interval: 1.0DEG
Test System:EVERFINE GO-3000H_V1 SYSTEM V2.00.411
Humidity:65.0%
Test Distance:9.000m [K=1.0000]
Remarks:

ISOLUX DIAGRAM

Test:U:11.928V I:0.4135A P:3.4917W PF:0.7079 Freq:60.00Hz Lamp Flux:343.179x1 lm		
NAME: 486735-MR16-3W-2700K-40°	TYPE:	WEIGHT:
SPEC.:	DIM.:	SERIAL No.:
MFR.:	SUR.:35mm	Shielding Angle:



C Range: 0 - 360DEG
C Interval: 15.0DEG
Test Speed: HIGH
Temperature:25.3DEG
Operators:DAMIN
Test Date:2022-04-08

γ Range: 0 - 90DEG
γ Interval: 1.0DEG
Test System:EVERFINE GO-3000H_V1 SYSTEM V2.00.411
Humidity:65.0%
Test Distance:9.000m [K=1.0000]
Remarks:

LED Avg.L Report

Test:U:11.928V I:0.4135A P:3.4917W PF:0.7079 Freq:60.00Hz Lamp Flux:343.179x1 lm		
NAME: 486735-MR16-3W-2700K-40°	TYPE:	WEIGHT:
SPEC.:	DIM.:	SERIAL No.:
MFR.:	SUR.:35mm	Shielding Angle:

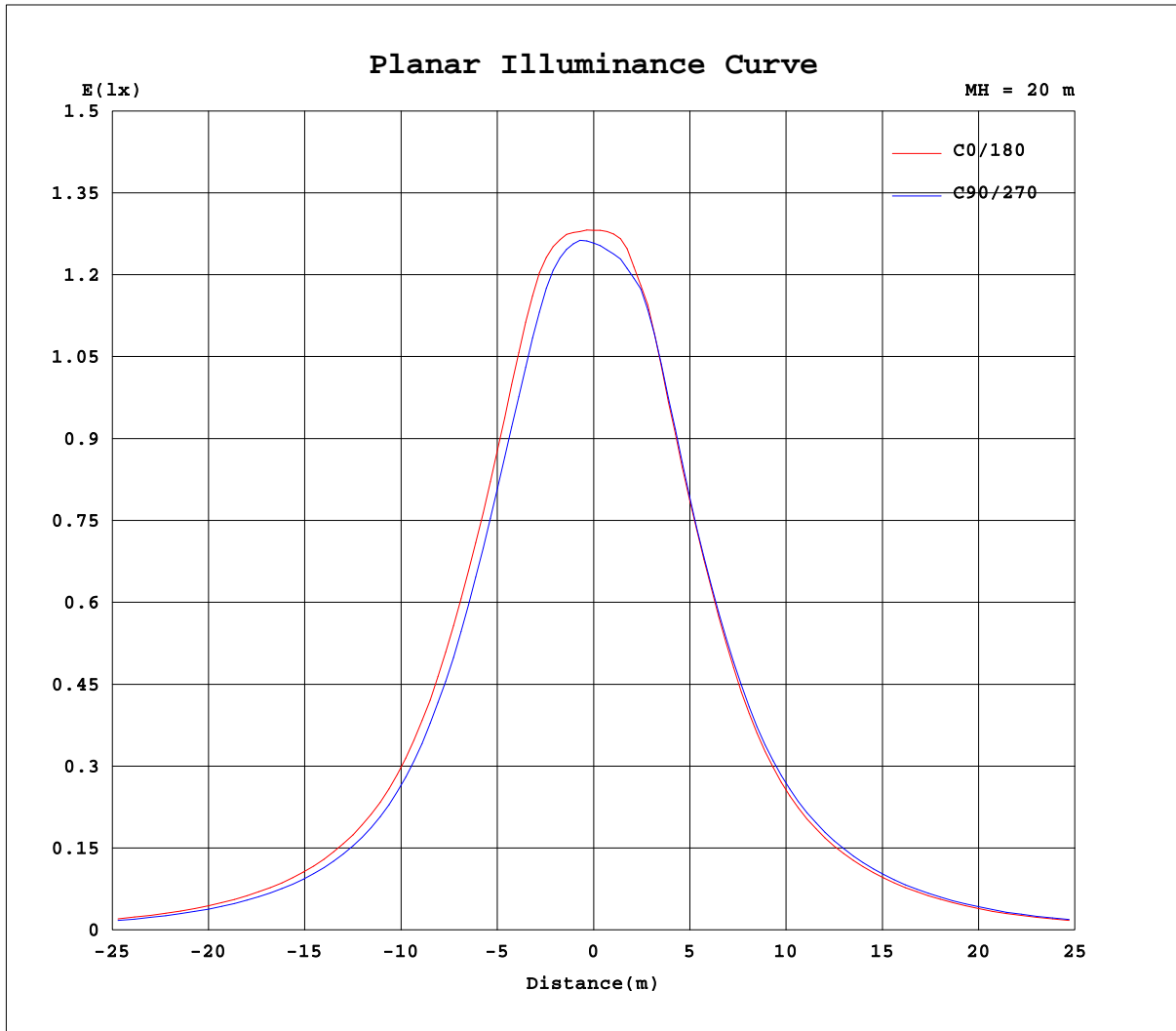
AvgL	cd/m2
L_0~180(65)av	23352
L_0~180(75)av	10272
L_0~180(85)av	6727
L_90~270(65)av	22495
L_90~270(75)av	9906
L_90~270(85)av	6275
L_45(65)av	20682
L_45(75)av	9730
L_45(85)av	7134

Standard: GB/T 29293-2012

C Range: 0 - 360DEG
C Interval: 15.0DEG
Test Speed: HIGH
Temperature:25.3DEG
Operators:DAMIN
Test Date:2022-04-08

γ Range: 0 - 90DEG
γ Interval: 1.0DEG
Test System:EVERFINE GO-3000H_V1 SYSTEM V2.00.411
Humidity:65.0%
Test Distance:9.000m [K=1.0000]
Remarks:

Planar Illuminance Curve



C Range: 0 - 360DEG
C Interval: 15.0DEG
Test Speed: HIGH
Temperature: 25.3DEG
Operators: DAMIN
Test Date: 2022-04-08

γ Range: 0 - 90DEG
 γ Interval: 1.0DEG
Test System: EVERFINE GO-3000H_V1 SYSTEM V2.00.411
Humidity: 65.0%
Test Distance: 9.000m [K=1.0000]
Remarks:

LUMINOUS DISTRIBUTION INTENSITY DATA

Test:U:11.928V I:0.4135A P:3.4917W PF:0.7079 Freq:60.00Hz Lamp Flux:343.179x1 lm		
NAME: 486735-MR16-3W-2700K-40°	TYPE:	WEIGHT:
SPEC.:	DIM.:	SERIAL No.:
MFR.:	SUR.:35mm	Shielding Angle:

Table--1 UNIT: cd

C(DEG) γ (DEG)	0	15	30	45	60	75	90	105	120	135	150	165	180	195	210	225	240	255	270
0	504	504	504	504	504	504	504	504	504	504	504	504	504	504	504	504	504	504	504
5	503	503	504	506	507	504	499	492	489	485	486	487	497	493	487	487	484	489	491
10	459	463	459	468	460	452	432	420	405	399	392	394	425	417	417	410	416	421	434
15	359	364	361	369	360	354	336	325	309	303	294	295	320	311	311	302	309	313	328
20	264	270	267	272	265	257	241	237	226	220	211	207	228	223	225	220	224	226	237
25	184	190	190	194	186	177	167	163	155	152	146	144	158	157	160	156	159	160	167
30	129	132	130	132	127	123	116	113	109	107	104	103	113	112	115	112	115	116	121
35	93.0	95.3	94.6	95.3	91.5	88.3	83.5	80.9	77.7	76.9	74.6	75.8	83.3	82.8	85.6	85.0	86.8	86.6	90.1
40	68.5	69.8	69.9	70.8	67.1	64.6	61.0	58.3	55.2	54.5	53.1	55.1	61.6	61.4	63.8	63.7	64.6	64.3	66.9
45	49.9	50.9	50.5	51.4	48.7	46.8	44.0	40.4	38.3	36.4	37.0	38.3	44.2	44.8	46.1	46.0	46.7	46.8	48.7
50	35.6	35.3	35.2	35.0	34.3	32.6	31.0	27.9	25.8	24.3	24.9	26.5	30.9	31.7	31.5	31.7	32.0	33.3	34.1
55	25.0	24.3	23.9	23.6	23.4	22.6	21.6	19.1	17.3	16.2	16.7	18.1	21.6	21.8	21.3	21.3	21.7	23.1	23.8
60	17.1	16.5	15.9	15.8	15.7	15.4	14.6	12.9	11.5	10.8	11.0	11.8	14.6	14.5	14.1	13.8	14.3	15.4	16.2
65	10.9	10.5	10.1	10.0	9.94	9.71	9.06	7.91	6.98	6.43	6.50	6.93	8.81	8.65	8.35	8.18	8.53	9.33	9.96
70	6.17	5.90	5.67	5.63	5.60	5.45	5.05	4.37	3.88	3.55	3.56	3.69	4.73	4.55	4.30	4.22	4.41	4.91	5.39
75	3.06	2.96	2.87	2.88	2.86	2.76	2.56	2.30	2.14	1.96	1.91	1.89	2.26	2.18	2.10	2.10	2.17	2.33	2.57
80	1.72	1.73	1.70	1.72	1.71	1.65	1.56	1.53	1.50	1.40	1.36	1.31	1.50	1.50	1.47	1.51	1.51	1.53	1.59
85	0.87	0.89	0.93	0.95	0.90	0.71	0.54	0.38	0.22	0.09	0.05	0.03	0.31	0.27	0.26	0.23	0.31	0.42	0.55
90	0.00	0.00	0.00	0.00	0.00	0.00	0.00	0.00	0.00	0.00	0.00	0.00	0.01	0.01	0.01	0.01	0.01	0.01	0.00

C Range: 0 - 360DEG
C Interval: 15.0DEG
Test Speed: HIGH
Temperature:25.3DEG
Operators:DAMIN
Test Date:2022-04-08

γ Range: 0 - 90DEG
γ Interval: 1.0DEG
Test System:EVERFINE GO-3000H_V1 SYSTEM V2.00.411
Humidity:65.0%
Test Distance:9.000m [K=1.0000]
Remarks:

LUMINOUS DISTRIBUTION INTENSITY DATA

Test:U:11.928V I:0.4135A P:3.4917W PF:0.7079 Freq:60.00Hz Lamp Flux:343.179x1 lm		
NAME: 486735-MR16-3W-2700K-40°	TYPE:	WEIGHT:
SPEC.:	DIM.:	SERIAL No.:
MFR.:	SUR.:35mm	Shielding Angle:

Table--2

UNIT: cd

C (DEG) γ (DEG)	285	300	315	330	345												
0	504	504	504	504	504												
5	495	499	500	503	504												
10	441	458	464	475	477												
15	339	358	369	384	384												
20	248	267	277	288	288												
25	176	193	202	208	204												
30	126	135	141	144	141												
35	92.2	98.2	101	103	101												
40	68.1	71.5	73.3	74.7	73.7												
45	49.3	51.1	52.1	53.8	53.7												
50	34.7	34.7	35.8	36.9	38.4												
55	23.8	23.4	24.0	25.1	26.7												
60	16.0	15.7	16.0	16.9	18.2												
65	9.99	9.98	10.3	11.0	11.9												
70	5.49	5.59	5.89	6.33	6.95												
75	2.75	2.90	3.13	3.37	3.62												
80	1.68	1.72	1.79	1.91	1.92												
85	0.73	1.00	1.21	1.33	1.33												
90	0.01	0.01	0.01	0.01	0.03												

C Range: 0 - 360DEG	γ Range: 0 - 90DEG
C Interval: 15.0DEG	γ Interval: 1.0DEG
Test Speed: HIGH	Test System:EVERFINE GO-3000H_V1 SYSTEM V2.00.411
Temperature:25.3DEG	Humidity:65.0%
Operators:DAMIN	Test Distance:9.000m [K=1.0000]
Test Date:2022-04-08	Remarks: