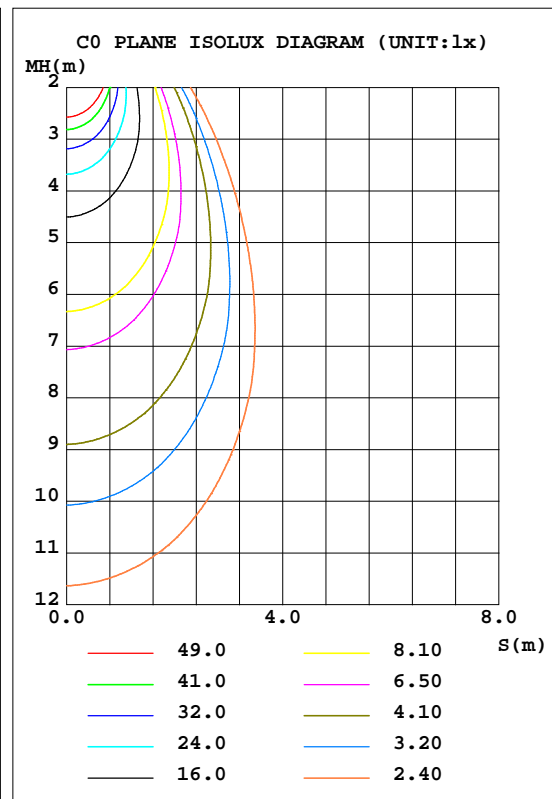
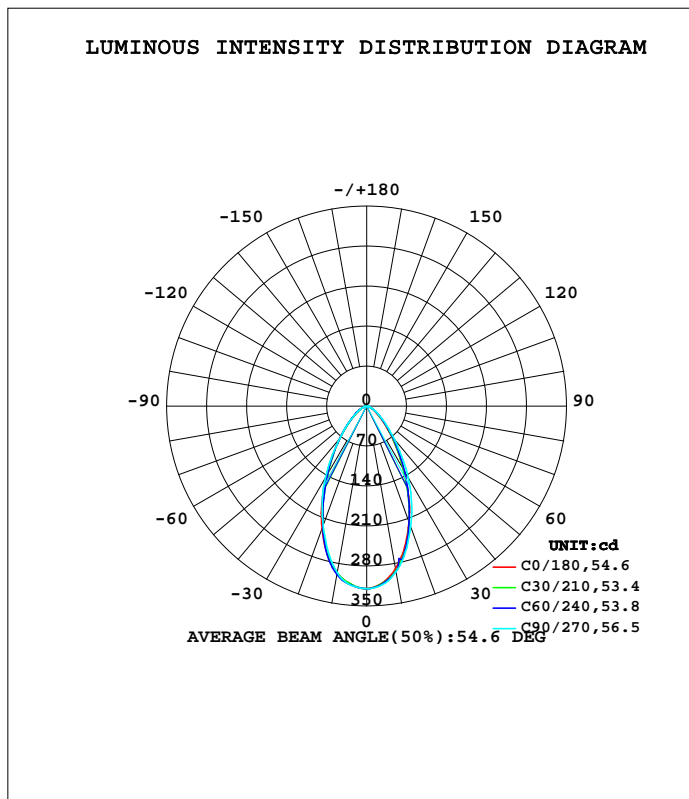


LUMINAIRE PHOTOMETRIC TEST REPORT

| | | |
|--|-----------|------------------|
| Test:U:11.943V I:0.4091A P:3.5087W PF:0.7181 Freq:60.00Hz Lamp Flux:323.942x1 lm | | |
| NAME: 486736-MR16-3W-2700K-60° | TYPE: | WEIGHT: |
| SPEC.: | DIM.: | SERIAL No.: |
| MFR.: | SUR.:35mm | Shielding Angle: |

| DATA OF LAMP | | PHOTOMETRIC DATA | | | |
|------------------|---------|------------------|--------|-------------------|----------|
| MODEL | | Imax(cd) | 320.0 | S/MH(C0/180) | 0.85 |
| NOMINAL POWER(W) | -- | LOR(%) | 100.0 | S/MH(C90/270) | 0.84 |
| RATED VOLTAGE(V) | -- | TOTAL FLUX(lm) | 323.94 | η UP,DN(C0-180) | 0.0,50.0 |
| NOMINAL FLUX(lm) | 323.942 | CIE CLASS | DIRECT | η UP,DN(C180-360) | 0.0,50.0 |
| LAMPS INSIDE | 1 | η up(%) | 0.0 | CIBSE SHR NOM | 0.75 |
| TEST VOLTAGE(V) | -- | η down(%) | 100.0 | CIBSE SHR MAX | 0.85 |



C Range: 0 - 360DEG
 C Interval: 15.0DEG
 Test Speed: HIGH
 Temperature:25.3DEG
 Operators:DAMIN
 Test Date:2022-04-06

γ Range: 0 - 90DEG
 γ Interval: 1.0DEG
 Test System:EVERFINE GO-3000H_V1 SYSTEM V2.00.411
 Humidity:65.0%
 Test Distance:9.000m [K=1.0000]
 Remarks:

ZONAL FLUX DIAGRAM

ZONAL FLUX DIAGRAM:

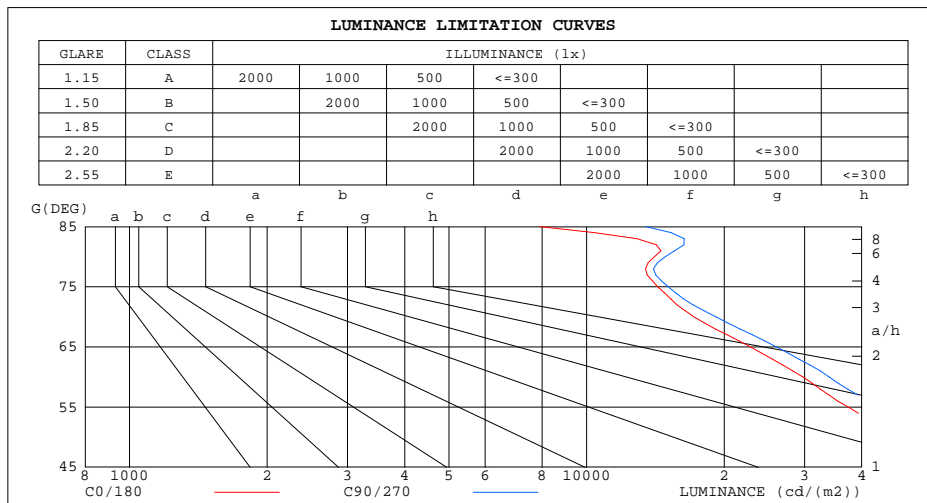
| γ | C0 | C45 | C90 | C135 | C180 | C225 | C270 | C315 | γ | Φ zone | Φ total | \$lum,lamp |
|----------|-----------------------|--------|--------|--------|--------|--------|--------|--------|----------|-------------|--------------|------------|
| 10 | 289.9 | 297.0 | 295.1 | 298.9 | 296.7 | 297.5 | 296.4 | 295.0 | 0- 10 | 29.38 | 29.38 | 9.07,9.07 |
| 20 | 216.7 | 222.5 | 225.3 | 227.9 | 228.5 | 223.8 | 223.2 | 218.8 | 10- 20 | 73.23 | 102.6 | 31.7,31.7 |
| 30 | 130.8 | 131.7 | 146.3 | 138.1 | 142.6 | 133.4 | 145.1 | 129.9 | 20- 30 | 81.69 | 184.3 | 56.9,56.9 |
| 40 | 65.55 | 70.12 | 75.19 | 72.61 | 72.94 | 70.85 | 73.14 | 67.88 | 30- 40 | 63.01 | 247.3 | 76.3,76.3 |
| 50 | 30.69 | 33.89 | 36.34 | 35.53 | 33.16 | 34.87 | 34.74 | 34.61 | 40- 50 | 38.75 | 286.1 | 88.3,88.3 |
| 60 | 14.64 | 16.72 | 17.02 | 17.47 | 15.31 | 16.90 | 16.51 | 17.24 | 50- 60 | 21.57 | 307.6 | 95,95 |
| 70 | 5.785 | 6.519 | 6.580 | 6.935 | 6.252 | 6.715 | 6.238 | 6.700 | 60- 70 | 10.77 | 318.4 | 98.3,98.3 |
| 80 | 2.406 | 2.483 | 2.592 | 2.709 | 3.624 | 2.563 | 2.412 | 2.550 | 70- 80 | 4.291 | 322.7 | 99.6,99.6 |
| 90 | 0.0044 | 0.0045 | 0.0030 | 0.0023 | 0.0154 | 0.0163 | 0.0179 | 0.0158 | 80- 90 | 1.237 | 323.9 | 100,100 |
| 100 | | | | | | | | | 90-100 | | | |
| 110 | | | | | | | | | 100-110 | | | |
| 120 | | | | | | | | | 110-120 | | | |
| 130 | | | | | | | | | 120-130 | | | |
| 140 | | | | | | | | | 130-140 | | | |
| 150 | | | | | | | | | 140-150 | | | |
| 160 | | | | | | | | | 150-160 | | | |
| 170 | | | | | | | | | 160-170 | | | |
| 180 | | | | | | | | | 170-180 | | | |
| DEG | LUMINOUS INTENSITY:cd | | | | | | | | | UNIT:lm | | |

C Range: 0 - 360DEG
 C Interval: 15.0DEG
 Test Speed: HIGH
 Temperature:25.3DEG
 Operators:DAMIN
 Test Date:2022-04-06

γ Range: 0 - 90DEG
 γ Interval: 1.0DEG
 Test System:EVERFINE GO-3000H_V1 SYSTEM V2.00.411
 Humidity:65.0%
 Test Distance:9.000m [K=1.0000]
 Remarks:

LUMINANCE LIMITATION CURVES

| | | |
|--|-----------|------------------|
| Test:U:11.943V I:0.4091A P:3.5087W PF:0.7181 Freq:60.00Hz Lamp Flux:323.942x1 lm | | |
| NAME: 486736-MR16-3W-2700K-60° | TYPE: | WEIGHT: |
| SPEC.: | DIM.: | SERIAL No.: |
| MFR.: | SUR.:35mm | Shielding Angle: |



| LUMINANCE cd/(m2) | | |
|-------------------|--------|---------|
| G(DEG) | C0/180 | C90/270 |
| 85 | 7895 | 13458 |
| 80 | 14075 | 14883 |
| 75 | 14306 | 15087 |
| 70 | 17181 | 19184 |
| 65 | 22837 | 26044 |
| 60 | 29742 | 33938 |
| 55 | 37429 | 43076 |
| 50 | 48506 | 56368 |
| 45 | 64845 | 74271 |

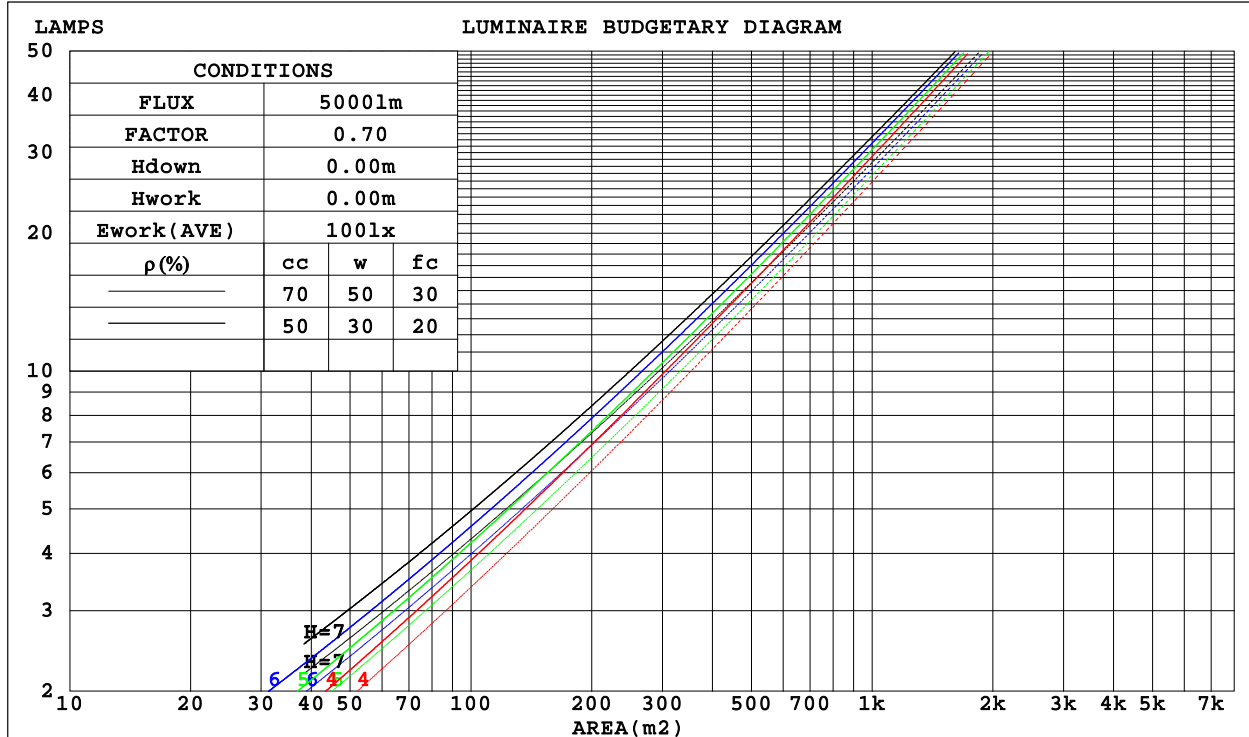
C Range: 0 - 360DEG
 C Interval: 15.0DEG
 Test Speed: HIGH
 Temperature:25.3DEG
 Operators:DAMIN
 Test Date:2022-04-06

γ Range: 0 - 90DEG
 γ Interval: 1.0DEG
 Test System:EVERFINE GO-3000H_V1 SYSTEM V2.00.411
 Humidity:65.0%
 Test Distance:9.000m [K=1.0000]
 Remarks:

CU AND LUMINAIRE BUDGETARY ESTIMATE DIAGRAM

| | | |
|--|-----------|------------------|
| Test:U:11.943V I:0.4091A P:3.5087W PF:0.7181 Freq:60.00Hz Lamp Flux:323.942x1 lm | | |
| NAME: 486736-MR16-3W-2700K-60° | TYPE: | WEIGHT: |
| SPEC.: | DIM.: | SERIAL No.: |
| MFR.: | SUR.:35mm | Shielding Angle: |

| ρ _{cc} | 80% | | | 70% | | | 50% | | | 30% | | | 10% | | | 0 |
|-----------------|-----------------------|------|------|------|------|------|---------------------------------|------|------|------|------|------|------|------|------|-----|
| ρ _w | 50% | 30% | 10% | 50% | 30% | 10% | 50% | 30% | 10% | 50% | 30% | 10% | 50% | 30% | 10% | 0 |
| ρ _{fc} | 20% | | | 20% | | | 20% | | | 20% | | | 20% | | | 0 |
| RCR | RCR:Room Cavity Ratio | | | | | | Coefficients of Utilization(CU) | | | | | | | | | |
| 0.0 | 1.19 | 1.19 | 1.19 | 1.16 | 1.16 | 1.16 | 1.11 | 1.11 | 1.11 | 1.06 | 1.06 | 1.06 | 1.02 | 1.02 | 1.02 | .00 |
| 1.0 | 1.09 | 1.06 | 1.03 | 1.07 | 1.04 | 1.02 | 1.03 | 1.01 | .99 | .99 | .97 | .96 | .95 | .94 | .93 | .91 |
| 2.0 | .00 | .95 | .91 | .98 | .94 | .90 | .95 | .91 | .88 | .92 | .89 | .86 | .89 | .86 | .84 | .82 |
| 3.0 | .91 | .86 | .81 | .90 | .85 | .80 | .87 | .83 | .79 | .85 | .81 | .78 | .82 | .79 | .76 | .75 |
| 4.0 | .84 | .78 | .73 | .83 | .77 | .72 | .81 | .76 | .72 | .79 | .74 | .71 | .77 | .73 | .70 | .68 |
| 5.0 | .78 | .71 | .66 | .77 | .71 | .66 | .75 | .69 | .65 | .73 | .68 | .65 | .72 | .67 | .64 | .62 |
| 6.0 | .72 | .65 | .61 | .71 | .65 | .60 | .70 | .64 | .60 | .68 | .63 | .59 | .67 | .63 | .59 | .57 |
| 7.0 | .67 | .61 | .56 | .67 | .60 | .56 | .65 | .60 | .55 | .64 | .59 | .55 | .63 | .58 | .55 | .53 |
| 8.0 | .63 | .56 | .52 | .62 | .56 | .52 | .61 | .55 | .51 | .60 | .55 | .51 | .59 | .54 | .51 | .49 |
| 9.0 | .59 | .53 | .48 | .59 | .52 | .48 | .58 | .52 | .48 | .57 | .51 | .48 | .56 | .51 | .47 | .46 |
| 10.0 | .56 | .49 | .45 | .55 | .49 | .45 | .54 | .49 | .45 | .53 | .48 | .45 | .53 | .48 | .44 | .43 |



C Range: 0 - 360DEG
 C Interval: 15.0DEG
 Test Speed: HIGH
 Temperature:25.3DEG
 Operators:DAMIN
 Test Date:2022-04-06

γ Range: 0 - 90DEG
 γ Interval: 1.0DEG
 Test System:EVERFINE GO-3000H_V1 SYSTEM V2.00.411
 Humidity:65.0%
 Test Distance:9.000m [K=1.0000]
 Remarks:

WEC AND CCEC

| | | |
|--|-----------|------------------|
| Test:U:11.943V I:0.4091A P:3.5087W PF:0.7181 Freq:60.00Hz Lamp Flux:323.942x1 lm | | |
| NAME: 486736-MR16-3W-2700K-60° | TYPE: | WEIGHT: |
| SPEC.: | DIM.: | SERIAL No.: |
| MFR.: | SUR.:35mm | Shielding Angle: |

| pcc | 80% | | | 70% | | | 50% | | | 30% | | | 10% | | | 0 |
|------|-----------------------|------|------|------|------|------|---------------------------------|------|------|------|------|------|------|------|------|---|
| pw | 50% | 30% | 10% | 50% | 30% | 10% | 50% | 30% | 10% | 50% | 30% | 10% | 50% | 30% | 10% | 0 |
| pfc | 20% | | | 20% | | | 20% | | | 20% | | | 20% | | | 0 |
| RCR | RCR:Room Cavity Ratio | | | | | | Wall Exitance Coefficients(WEC) | | | | | | | | | |
| 0.0 | | | | | | | | | | | | | | | | |
| 1.0 | .211 | .120 | .038 | .205 | .117 | .037 | .192 | .110 | .035 | .180 | .104 | .033 | .169 | .098 | .032 | |
| 2.0 | .203 | .111 | .034 | .197 | .109 | .033 | .186 | .104 | .032 | .176 | .099 | .031 | .167 | .094 | .030 | |
| 3.0 | .192 | .102 | .031 | .187 | .100 | .030 | .178 | .096 | .029 | .169 | .093 | .028 | .161 | .089 | .028 | |
| 4.0 | .182 | .095 | .028 | .178 | .093 | .027 | .169 | .090 | .027 | .162 | .087 | .026 | .155 | .084 | .026 | |
| 5.0 | .172 | .088 | .025 | .168 | .086 | .025 | .161 | .084 | .025 | .154 | .081 | .024 | .148 | .079 | .024 | |
| 6.0 | .163 | .081 | .023 | .159 | .080 | .023 | .153 | .078 | .023 | .147 | .076 | .022 | .141 | .074 | .022 | |
| 7.0 | .154 | .076 | .022 | .151 | .075 | .021 | .145 | .073 | .021 | .140 | .072 | .021 | .135 | .070 | .021 | |
| 8.0 | .146 | .071 | .020 | .144 | .071 | .020 | .138 | .069 | .020 | .134 | .068 | .020 | .129 | .066 | .019 | |
| 9.0 | .139 | .067 | .019 | .137 | .067 | .019 | .132 | .065 | .019 | .128 | .064 | .018 | .124 | .063 | .018 | |
| 10.0 | .132 | .063 | .018 | .130 | .063 | .018 | .126 | .062 | .017 | .122 | .061 | .017 | .119 | .060 | .017 | |

| pcc | 80% | | | 70% | | | 50% | | | 30% | | | 10% | | | 0 |
|------|-----------------------|------|------|------|------|------|--|------|------|------|------|------|------|------|------|---|
| pw | 50% | 30% | 10% | 50% | 30% | 10% | 50% | 30% | 10% | 50% | 30% | 10% | 50% | 30% | 10% | 0 |
| pfc | 20% | | | 20% | | | 20% | | | 20% | | | 20% | | | 0 |
| RCR | RCR:Room Cavity Ratio | | | | | | Ceiling Cavity Exitance Coefficients(CCEC) | | | | | | | | | |
| 0.0 | .190 | .190 | .190 | .163 | .163 | .163 | .111 | .111 | .111 | .064 | .064 | .064 | .020 | .020 | .020 | |
| 1.0 | .173 | .157 | .142 | .148 | .135 | .122 | .102 | .093 | .085 | .058 | .054 | .049 | .019 | .017 | .016 | |
| 2.0 | .160 | .132 | .109 | .137 | .114 | .094 | .094 | .079 | .066 | .054 | .046 | .038 | .017 | .015 | .013 | |
| 3.0 | .150 | .114 | .085 | .128 | .098 | .074 | .088 | .068 | .052 | .051 | .040 | .031 | .016 | .013 | .010 | |
| 4.0 | .140 | .099 | .068 | .120 | .086 | .059 | .083 | .060 | .042 | .048 | .035 | .025 | .015 | .011 | .008 | |
| 5.0 | .132 | .088 | .056 | .113 | .076 | .049 | .078 | .053 | .034 | .045 | .031 | .020 | .015 | .010 | .007 | |
| 6.0 | .125 | .079 | .046 | .107 | .069 | .040 | .074 | .048 | .029 | .043 | .028 | .017 | .014 | .009 | .006 | |
| 7.0 | .119 | .072 | .039 | .102 | .062 | .034 | .070 | .044 | .024 | .041 | .026 | .014 | .013 | .008 | .005 | |
| 8.0 | .113 | .066 | .034 | .097 | .057 | .029 | .067 | .040 | .021 | .039 | .024 | .012 | .013 | .008 | .004 | |
| 9.0 | .107 | .061 | .029 | .092 | .053 | .026 | .064 | .037 | .018 | .037 | .022 | .011 | .012 | .007 | .004 | |
| 10.0 | .102 | .056 | .026 | .088 | .049 | .023 | .061 | .034 | .016 | .036 | .020 | .010 | .012 | .007 | .003 | |

C Range: 0 - 360DEG
 C Interval: 15.0DEG
 Test Speed: HIGH
 Temperature:25.3DEG
 Operators:DAMIN
 Test Date:2022-04-06

γ Range: 0 - 90DEG
 γ Interval: 1.0DEG
 Test System:EVERFINE GO-3000H_V1 SYSTEM V2.00.411
 Humidity:65.0%
 Test Distance:9.000m [K=1.0000]
 Remarks:

UGR(Unified Glare Rating) Table

| | | | | | | | | | | |
|--|------------------|------|------|------|-----------|----------------|------|------------------|------|------|
| Test:U:11.943V I:0.4091A P:3.5087W PF:0.7181 Freq:60.00Hz Lamp Flux:323.942x1 lm | | | | | | | | | | |
| NAME: 486736-MR16-3W-2700K-60° | | | | | TYPE: | | | WEIGHT: | | |
| SPEC.: | | | | | DIM.: | | | SERIAL No.: | | |
| MFR.: | | | | | SUR.:35mm | | | Shielding Angle: | | |
| ceiling/cavity | 0.7 | 0.7 | 0.5 | 0.5 | 0.3 | 0.7 | 0.7 | 0.5 | 0.5 | 0.3 |
| walls | 0.5 | 0.3 | 0.5 | 0.3 | 0.3 | 0.5 | 0.3 | 0.5 | 0.3 | 0.3 |
| working plane | 0.2 | 0.2 | 0.2 | 0.2 | 0.2 | 0.2 | 0.2 | 0.2 | 0.2 | 0.2 |
| Room dimensions | Viewed crosswise | | | | | Viewed endwise | | | | |
| x = 2H y = 2H | 23.6 | 24.8 | 23.9 | 24.9 | 25.1 | 24.2 | 25.3 | 24.4 | 25.5 | 25.6 |
| 3H | 23.9 | 24.9 | 24.2 | 25.1 | 25.3 | 24.4 | 25.5 | 24.7 | 25.7 | 25.9 |
| 4H | 24.0 | 24.9 | 24.2 | 25.2 | 25.4 | 24.5 | 25.5 | 24.8 | 25.7 | 25.9 |
| 6H | 24.0 | 24.9 | 24.3 | 25.2 | 25.4 | 24.5 | 25.5 | 24.8 | 25.7 | 26.0 |
| 8H | 24.0 | 24.9 | 24.3 | 25.2 | 25.4 | 24.6 | 25.4 | 24.9 | 25.7 | 26.0 |
| 12H | 24.0 | 24.8 | 24.3 | 25.1 | 25.4 | 24.6 | 25.4 | 24.9 | 25.7 | 26.0 |
| 4H 2H | 23.8 | 24.8 | 24.1 | 25.0 | 25.2 | 24.3 | 25.2 | 24.5 | 25.5 | 25.7 |
| 3H | 24.1 | 25.0 | 24.5 | 25.3 | 25.5 | 24.6 | 25.5 | 25.0 | 25.7 | 26.0 |
| 4H | 24.3 | 25.0 | 24.6 | 25.3 | 25.6 | 24.7 | 25.5 | 25.1 | 25.8 | 26.1 |
| 6H | 24.4 | 25.0 | 24.8 | 25.4 | 25.7 | 24.8 | 25.5 | 25.2 | 25.9 | 26.2 |
| 8H | 24.4 | 25.1 | 24.8 | 25.4 | 25.8 | 24.9 | 25.5 | 25.3 | 25.9 | 26.3 |
| 12H | 24.4 | 25.0 | 24.8 | 25.4 | 25.8 | 25.0 | 25.5 | 25.4 | 25.9 | 26.3 |
| 8H 4H | 24.2 | 24.9 | 24.6 | 25.2 | 25.6 | 24.7 | 25.3 | 25.1 | 25.7 | 26.1 |
| 6H | 24.4 | 25.0 | 24.9 | 25.4 | 25.8 | 24.9 | 25.4 | 25.3 | 25.8 | 26.2 |
| 8H | 24.6 | 25.0 | 25.0 | 25.4 | 25.9 | 25.0 | 25.5 | 25.5 | 25.9 | 26.3 |
| 12H | 24.6 | 25.0 | 25.0 | 25.4 | 25.9 | 25.1 | 25.5 | 25.6 | 25.9 | 26.4 |
| 12H 4H | 24.2 | 24.8 | 24.6 | 25.2 | 25.6 | 24.7 | 25.3 | 25.1 | 25.6 | 26.0 |
| 6H | 24.4 | 24.9 | 24.9 | 25.3 | 25.8 | 24.9 | 25.3 | 25.3 | 25.8 | 26.2 |
| 8H | 24.6 | 25.0 | 25.0 | 25.4 | 25.9 | 25.0 | 25.4 | 25.5 | 25.9 | 26.3 |
| Variations with the observer position at spacings: | | | | | | | | | | |
| S = 1.0H | + 1.0 / - 1.4 | | | | | + 1.0 / - 1.3 | | | | |
| 1.5H | + 1.2 / - 0.9 | | | | | + 1.4 / - 0.9 | | | | |
| 2.0H | + 1.8 / - 1.3 | | | | | + 2.0 / - 1.5 | | | | |

CIE Pub.117, 323.9 lm Total Lamp Luminous Flux Corrected (8log(F/F0) = -3.9)
Area: 0.001 m2

C Range: 0 - 360DEG
C Interval: 15.0DEG
Test Speed: HIGH
Temperature:25.3DEG
Operators:DAMIN
Test Date:2022-04-06

γ Range: 0 - 90DEG
γ Interval: 1.0DEG
Test System:EVERFINE GO-3000H_V1 SYSTEM V2.00.411
Humidity:65.0%
Test Distance:9.000m [K=1.0000]
Remarks:

UTILIZATION FACTORS TABLE

| | | |
|--|-----------|------------------|
| Test:U:11.943V I:0.4091A P:3.5087W PF:0.7181 Freq:60.00Hz Lamp Flux:323.942x1 lm | | |
| NAME: 486736-MR16-3W-2700K-60° | TYPE: | WEIGHT: |
| SPEC.: | DIM.: | SERIAL No.: |
| MFR.: | SUR.:35mm | Shielding Angle: |

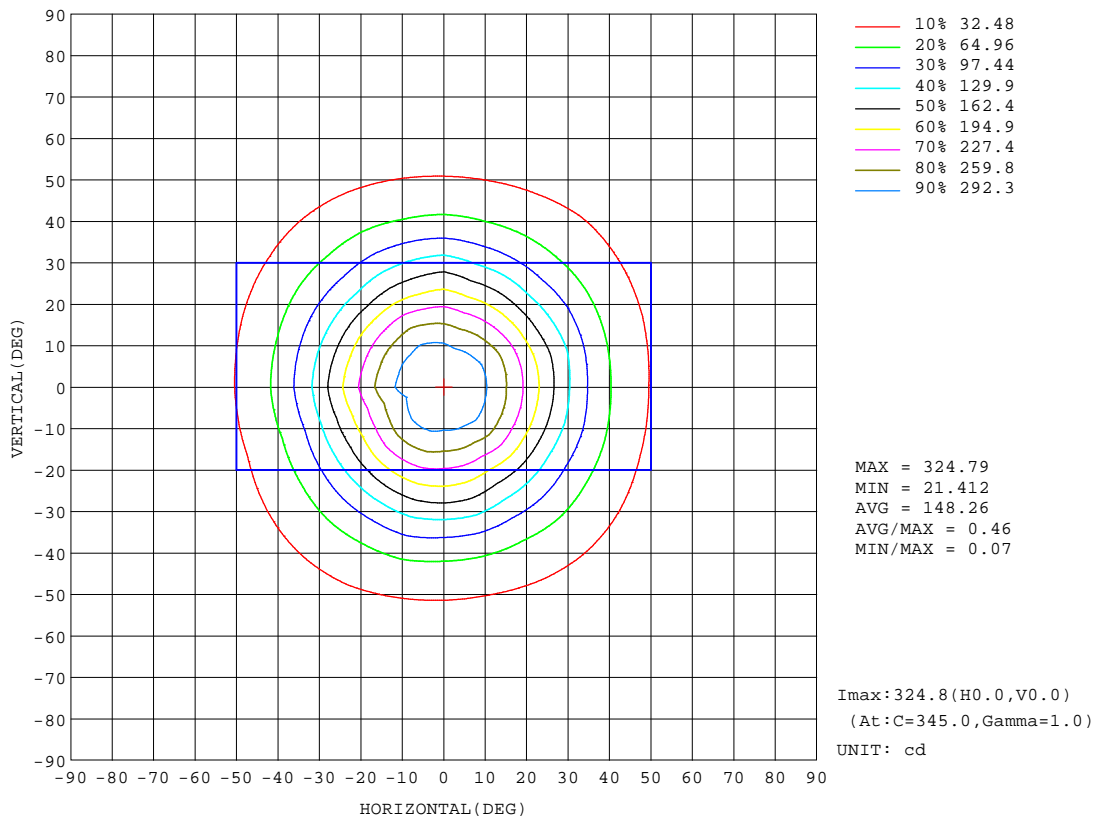
| REFLECTANCE | | | | | | | | | | |
|----------------------------------|--|-----|-----------|-----|-----|-----|---------------|-----|-----|--------|
| Ceiling | 0.8 | 0.8 | 0.8 | 0.7 | 0.7 | 0.7 | 0.5 | 0.5 | 0.5 | 0 |
| Walls | 0.7 | 0.5 | 0.3 | 0.7 | 0.5 | 0.3 | 0.7 | 0.5 | 0.3 | 0 |
| Working plane | 0.2 | 0.2 | 0.2 | 0.2 | 0.2 | 0.2 | 0.2 | 0.2 | 0.2 | 0 |
| ROOM INDEX | UTILIZATION FACTORS(PERCENT) k(RI) x RCR = 5 | | | | | | | | | |
| k = 0.60 | 77 | 68 | 63 | 76 | 68 | 63 | 75 | 68 | 63 | 59 |
| 0.80 | 85 | 78 | 73 | 85 | 77 | 72 | 83 | 77 | 72 | 67 |
| 1.00 | 92 | 84 | 79 | 91 | 84 | 79 | 89 | 84 | 79 | 74 |
| 1.25 | 97 | 90 | 85 | 96 | 89 | 85 | 94 | 88 | 84 | 79 |
| 1.50 | 100 | 94 | 90 | 99 | 93 | 89 | 97 | 92 | 88 | 83 |
| 2.00 | 105 | 99 | 95 | 103 | 98 | 94 | 100 | 96 | 93 | 87 |
| 2.50 | 107 | 102 | 98 | 105 | 101 | 97 | 102 | 98 | 95 | 89 |
| 3.00 | 109 | 105 | 101 | 107 | 103 | 100 | 104 | 100 | 98 | 91 |
| 4.00 | 112 | 108 | 105 | 109 | 106 | 104 | 106 | 103 | 101 | 93 |
| 5.00 | 113 | 110 | 108 | 111 | 108 | 106 | 107 | 105 | 103 | 95 |
| ROOM INDEX | UF(total) | | | | | | | | | Direct |
| According to DIN EN 13032-2 2004 | | | Suspended | | | | SHRNOM = 1.25 | | | |

C Range: 0 - 360DEG
C Interval: 15.0DEG
Test Speed: HIGH
Temperature:25.3DEG
Operators:DAMIN
Test Date:2022-04-06

γ Range: 0 - 90DEG
γ Interval: 1.0DEG
Test System:EVERFINE GO-3000H_V1 SYSTEM V2.00.411
Humidity:65.0%
Test Distance:9.000m [K=1.0000]
Remarks:

ISOCANDELA DIAGRAM

| | | |
|--|-----------|------------------|
| Test:U:11.943V I:0.4091A P:3.5087W PF:0.7181 Freq:60.00Hz Lamp Flux:323.942x1 lm | | |
| NAME: 486736-MR16-3W-2700K-60° | TYPE: | WEIGHT: |
| SPEC.: | DIM.: | SERIAL No.: |
| MFR.: | SUR.:35mm | Shielding Angle: |



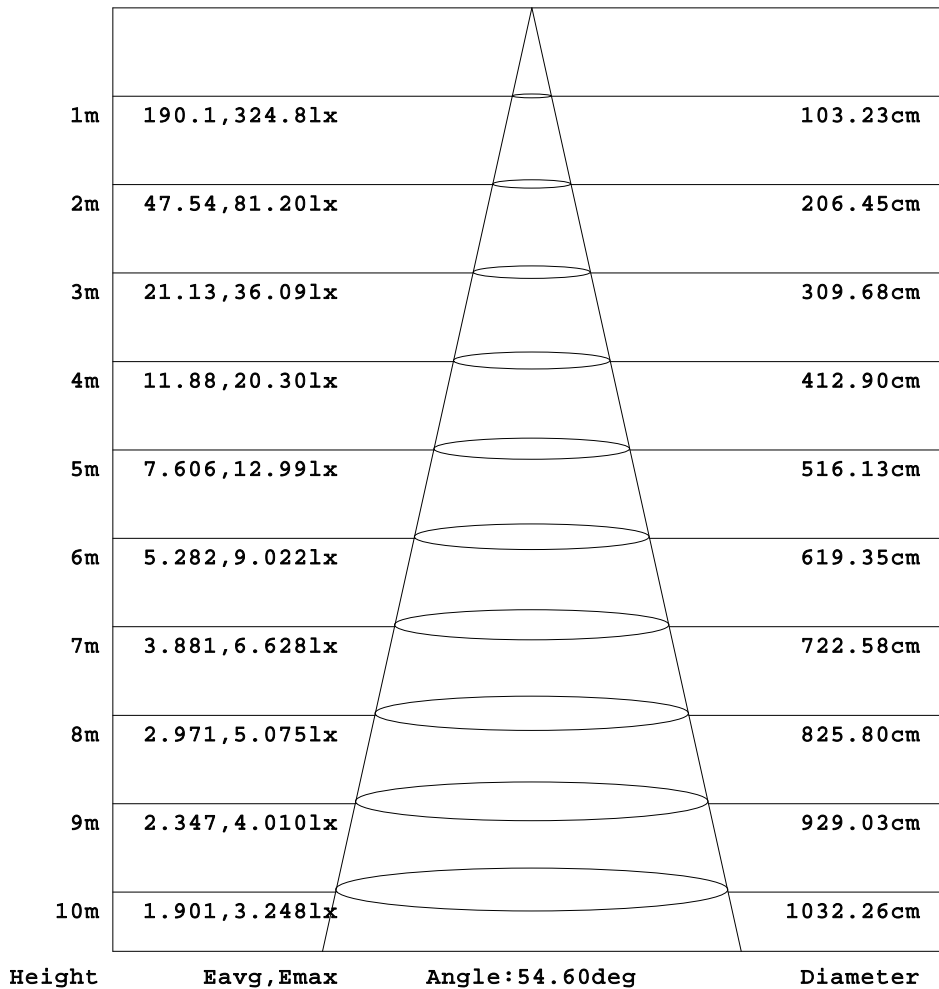
C Range: 0 - 360DEG
C Interval: 15.0DEG
Test Speed: HIGH
Temperature:25.3DEG
Operators:DAMIN
Test Date:2022-04-06

γ Range: 0 - 90DEG
γ Interval: 1.0DEG
Test System:EVERFINE GO-3000H_V1 SYSTEM V2.00.411
Humidity:65.0%
Test Distance:9.000m [K=1.0000]
Remarks:

AAI Figure

| | | |
|--|-----------|------------------|
| Test:U:11.943V I:0.4091A P:3.5087W PF:0.7181 Freq:60.00Hz Lamp Flux:323.942x1 lm | | |
| NAME: 486736-MR16-3W-2700K-60° | TYPE: | WEIGHT: |
| SPEC.: | DIM.: | SERIAL No.: |
| MFR.: | SUR.:35mm | Shielding Angle: |

Flux out:168.9 lm



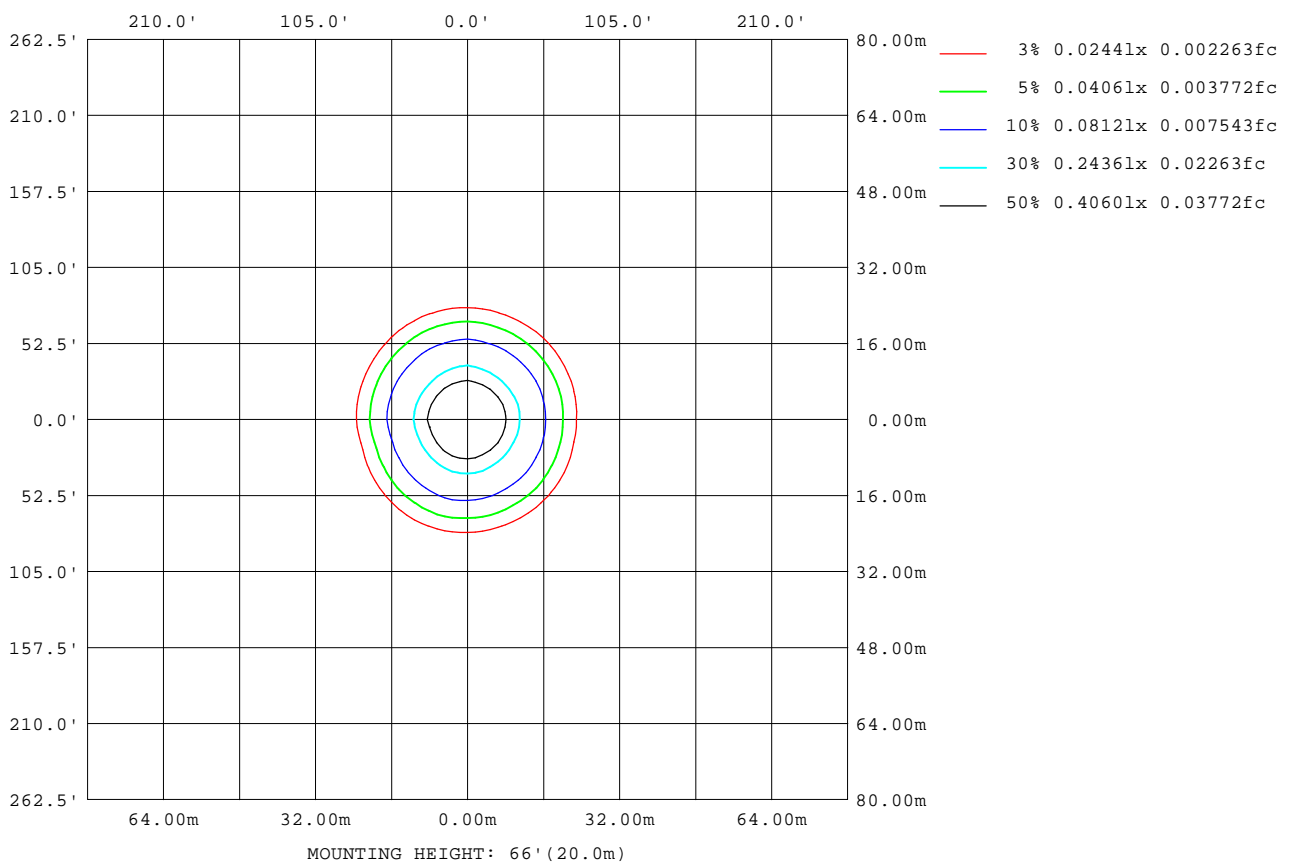
Note:The Curves indicate the illuminated area and the average illumination when the luminaire is at different distance.

C Range: 0 - 360DEG
C Interval: 15.0DEG
Test Speed: HIGH
Temperature:25.3DEG
Operators:DAMIN
Test Date:2022-04-06

γ Range: 0 - 90DEG
γ Interval: 1.0DEG
Test System:EVERFINE GO-3000H_V1 SYSTEM V2.00.411
Humidity:65.0%
Test Distance:9.000m [K=1.0000]
Remarks:

ISOLUX DIAGRAM

| | | |
|--|-----------|------------------|
| Test:U:11.943V I:0.4091A P:3.5087W PF:0.7181 Freq:60.00Hz Lamp Flux:323.942x1 lm | | |
| NAME: 486736-MR16-3W-2700K-60° | TYPE: | WEIGHT: |
| SPEC.: | DIM.: | SERIAL No.: |
| MFR.: | SUR.:35mm | Shielding Angle: |



C Range: 0 - 360DEG
C Interval: 15.0DEG
Test Speed: HIGH
Temperature:25.3DEG
Operators:DAMIN
Test Date:2022-04-06

γ Range: 0 - 90DEG
γ Interval: 1.0DEG
Test System:EVERFINE GO-3000H_V1 SYSTEM V2.00.411
Humidity:65.0%
Test Distance:9.000m [K=1.0000]
Remarks:

LED Avg.L Report

| | | |
|--|-----------|------------------|
| Test:U:11.943V I:0.4091A P:3.5087W PF:0.7181 Freq:60.00Hz Lamp Flux:323.942x1 lm | | |
| NAME: 486736-MR16-3W-2700K-60° | TYPE: | WEIGHT: |
| SPEC.: | DIM.: | SERIAL No.: |
| MFR.: | SUR.:35mm | Shielding Angle: |

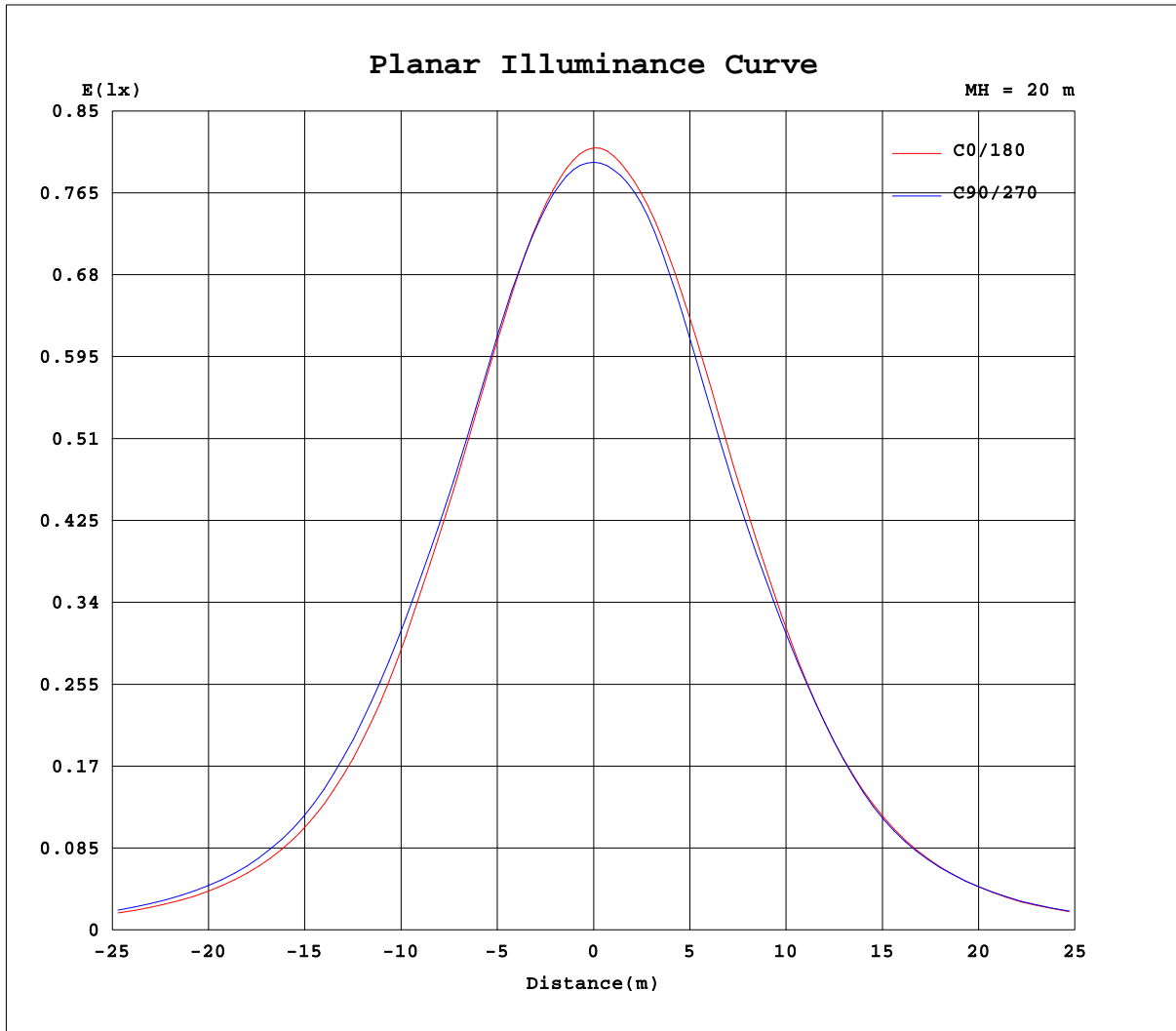
| AvgL | cd/m2 |
|----------------|-------|
| L_0~180(65)av | 23147 |
| L_0~180(75)av | 15280 |
| L_0~180(85)av | 14822 |
| L_90~270(65)av | 25564 |
| L_90~270(75)av | 14493 |
| L_90~270(85)av | 11481 |
| L_45(65)av | 26286 |
| L_45(75)av | 15041 |
| L_45(85)av | 11447 |

Standard: GB/T 29293-2012

C Range: 0 - 360DEG
C Interval: 15.0DEG
Test Speed: HIGH
Temperature:25.3DEG
Operators:DAMIN
Test Date:2022-04-06

γ Range: 0 - 90DEG
γ Interval: 1.0DEG
Test System:EVERFINE GO-3000H_V1 SYSTEM V2.00.411
Humidity:65.0%
Test Distance:9.000m [K=1.0000]
Remarks:

Planar Illuminance Curve



C Range: 0 - 360DEG
 C Interval: 15.0DEG
 Test Speed: HIGH
 Temperature: 25.3DEG
 Operators: DAMIN
 Test Date: 2022-04-06

γ Range: 0 - 90DEG
 γ Interval: 1.0DEG
 Test System: EVERFINE GO-3000H_V1 SYSTEM V2.00.411
 Humidity: 65.0%
 Test Distance: 9.000m [K=1.0000]
 Remarks:

LUMINOUS DISTRIBUTION INTENSITY DATA

| | | |
|--|-----------|------------------|
| Test:U:11.943V I:0.4091A P:3.5087W PF:0.7181 Freq:60.00Hz Lamp Flux:323.942x1 lm | | |
| NAME: 486736-MR16-3W-2700K-60° | TYPE: | WEIGHT: |
| SPEC.: | DIM.: | SERIAL No.: |
| MFR.: | SUR.:35mm | Shielding Angle: |

Table--2

UNIT: cd

| C(DEG) γ (DEG) | 285 | 300 | 315 | 330 | 345 | | | | | | | | | | | | | | |
|-------------------|------|------|------|------|------|--|--|--|--|--|--|--|--|--|--|--|--|--|--|
| 0 | 320 | 320 | 320 | 320 | 320 | | | | | | | | | | | | | | |
| 5 | 313 | 314 | 314 | 315 | 316 | | | | | | | | | | | | | | |
| 10 | 292 | 294 | 295 | 298 | 298 | | | | | | | | | | | | | | |
| 15 | 257 | 260 | 262 | 267 | 266 | | | | | | | | | | | | | | |
| 20 | 217 | 217 | 219 | 222 | 223 | | | | | | | | | | | | | | |
| 25 | 175 | 174 | 173 | 175 | 180 | | | | | | | | | | | | | | |
| 30 | 135 | 133 | 130 | 133 | 139 | | | | | | | | | | | | | | |
| 35 | 99.1 | 97.2 | 95.3 | 98.6 | 99.0 | | | | | | | | | | | | | | |
| 40 | 70.0 | 69.1 | 67.9 | 69.0 | 68.7 | | | | | | | | | | | | | | |
| 45 | 49.2 | 49.2 | 48.5 | 48.5 | 48.2 | | | | | | | | | | | | | | |
| 50 | 34.2 | 34.0 | 34.6 | 33.7 | 33.4 | | | | | | | | | | | | | | |
| 55 | 23.7 | 23.9 | 24.7 | 23.9 | 23.2 | | | | | | | | | | | | | | |
| 60 | 16.2 | 16.6 | 17.2 | 16.8 | 16.2 | | | | | | | | | | | | | | |
| 65 | 10.3 | 10.6 | 11.1 | 11.0 | 10.7 | | | | | | | | | | | | | | |
| 70 | 6.05 | 6.32 | 6.70 | 6.73 | 6.58 | | | | | | | | | | | | | | |
| 75 | 3.48 | 3.58 | 3.84 | 4.03 | 4.13 | | | | | | | | | | | | | | |
| 80 | 2.36 | 2.43 | 2.55 | 2.63 | 2.66 | | | | | | | | | | | | | | |
| 85 | 0.63 | 0.64 | 0.79 | 0.91 | 1.02 | | | | | | | | | | | | | | |
| 90 | 0.02 | 0.02 | 0.02 | 0.02 | 0.01 | | | | | | | | | | | | | | |

C Range: 0 - 360DEG
C Interval: 15.0DEG
Test Speed: HIGH
Temperature:25.3DEG
Operators:DAMIN
Test Date:2022-04-06

γ Range: 0 - 90DEG
γ Interval: 1.0DEG
Test System:EVERFINE GO-3000H_V1 SYSTEM V2.00.411
Humidity:65.0%
Test Distance:9.000m [K=1.0000]
Remarks: