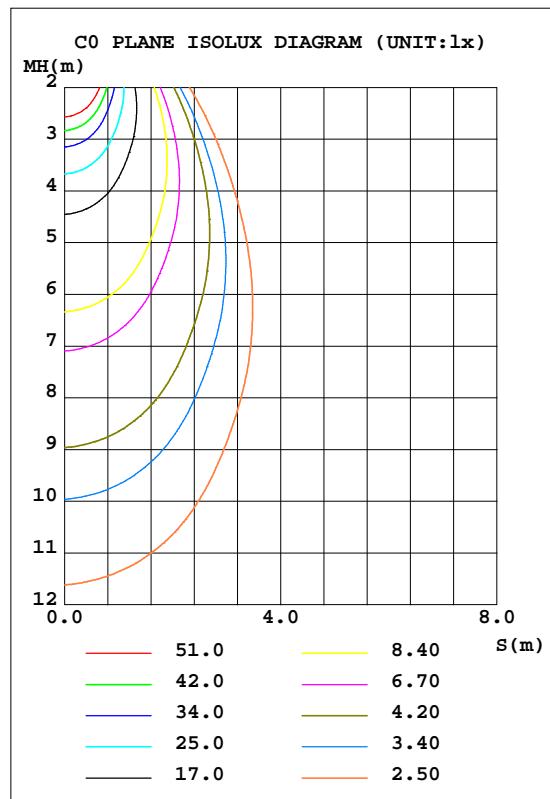
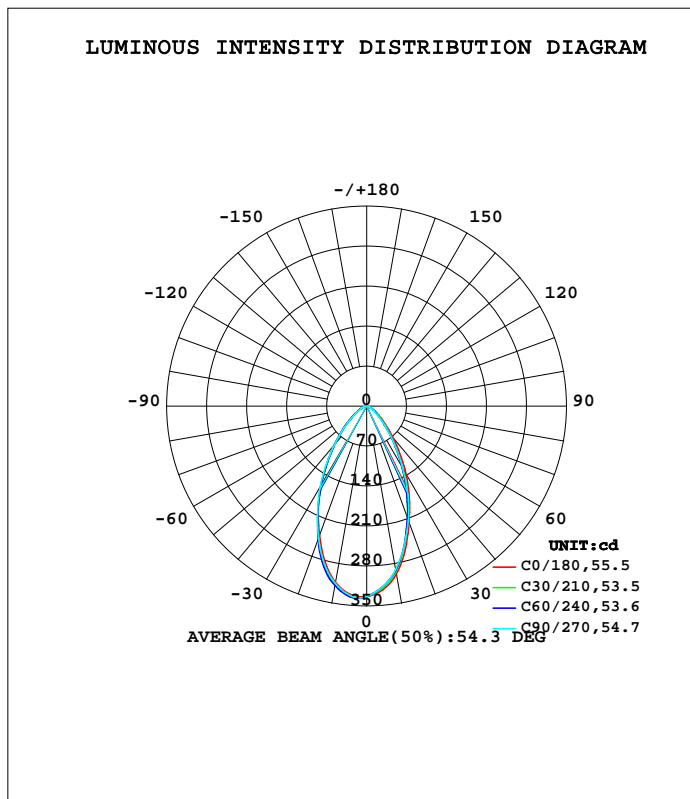


LUMINAIRE PHOTOMETRIC TEST REPORT

Test:U:11.962V I:0.4232A P:3.5002W PF:0.6914 Freq:60.00Hz Lamp Flux:334.884x1 lm		
NAME: 486741-MR16-3W-3000K-60°	TYPE:	WEIGHT:
SPEC.:	DIM.:	SERIAL No.:
MFR.:	SUR.:35mm	Shielding Angle:

DATA OF LAMP		PHOTOMETRIC DATA			
MODEL		I _{max} (cd)	337.0	S/MH(C0/180)	0.86
NOMINAL POWER(W)	--	LOR(%)	100.0	S/MH(C90/270)	0.87
RATED VOLTAGE(V)	--	TOTAL FLUX(lm)	334.88	η UP,DN(C0-180)	0.0,45.6
NOMINAL FLUX(lm)	334.884	CIE CLASS	DIRECT	η UP,DN(C180-360)	0.0,54.4
LAMPS INSIDE	1	η up(%)	0.0	CIBSE SHR NOM	0.75
TEST VOLTAGE(V)	--	η down(%)	100.0	CIBSE SHR MAX	0.85



C Range: 0 - 360DEG
 C Interval: 15.0DEG
 Test Speed: HIGH
 Temperature:25.3DEG
 Operators:DAMIN
 Test Date:2022-04-09

γ Range: 0 - 90DEG
 γ Interval: 1.0DEG
 Test System:EVERFINE GO-3000H_V1 SYSTEM V2.00.411
 Humidity:65.0%
 Test Distance:9.000m [K=1.0000]
 Remarks:

ZONAL FLUX DIAGRAM

ZONAL FLUX DIAGRAM:

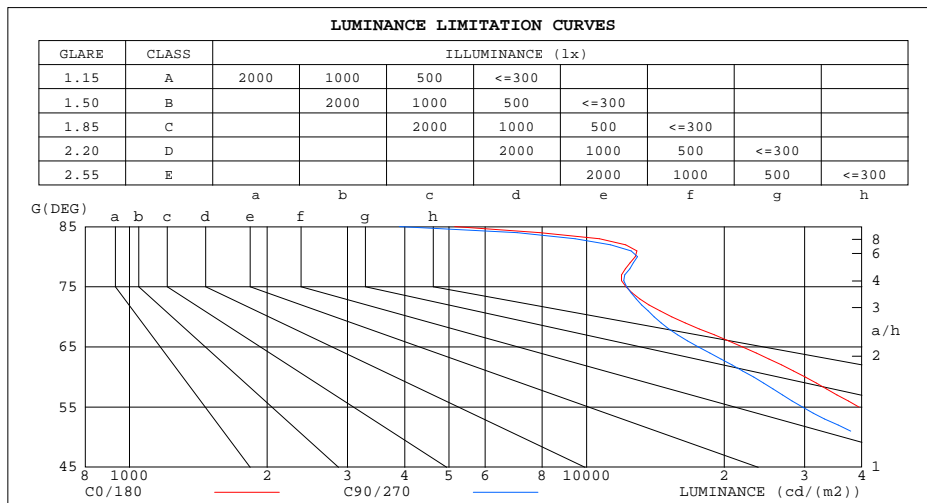
γ	C0	C45	C90	C135	C180	C225	C270	C315	γ	Φ zone	Φ total	\$lum,lamp
10	298.8	293.7	291.1	299.5	313.5	318.0	315.7	312.0	0- 10	30.48	30.48	9.1,9.1
20	217.2	209.3	213.0	217.2	241.4	247.1	246.3	235.6	10- 20	75.20	105.7	31.6,31.6
30	138.1	123.4	127.4	130.4	161.2	155.8	162.8	148.2	20- 30	84.47	190.1	56.8,56.8
40	71.18	62.68	60.81	67.11	85.71	86.05	87.12	81.22	30- 40	66.40	256.5	76.6,76.6
50	32.92	28.41	26.08	31.09	39.71	42.77	40.14	40.38	40- 50	40.62	297.2	88.7,88.7
60	14.87	13.07	11.63	14.77	17.75	20.39	18.00	19.45	50- 60	21.80	319.0	95.2,95.2
70	5.192	4.974	4.822	6.050	7.088	8.072	7.008	7.305	60- 70	10.56	329.5	98.4,98.4
80	2.193	2.166	2.251	2.517	2.728	2.805	3.029	2.489	70- 80	4.200	333.7	99.7,99.7
90	0.0007	0	0	0	0.0125	0.0163	0.0134	0.0112	80- 90	1.160	334.9	100,100
100									90-100			
110									100-110			
120									110-120			
130									120-130			
140									130-140			
150									140-150			
160									150-160			
170									160-170			
180									170-180			
DEG	LUMINOUS INTENSITY:cd									UNIT:lm		

C Range: 0 - 360DEG
C Interval: 15.0DEG
Test Speed: HIGH
Temperature:25.3DEG
Operators:DAMIN
Test Date:2022-04-09

γ Range: 0 - 90DEG
 γ Interval: 1.0DEG
Test System:EVERFINE GO-3000H_V1 SYSTEM V2.00.411
Humidity:65.0%
Test Distance:9.000m [K=1.0000]
Remarks:

LUMINANCE LIMITATION CURVES

Test:U:11.962V I:0.4232A P:3.5002W PF:0.6914 Freq:60.00Hz Lamp Flux:334.884x1 lm		
NAME: 486741-MR16-3W-3000K-60°	TYPE:	WEIGHT:
SPEC.:	DIM.:	SERIAL No.:
MFR.:	SUR.:35mm	Shielding Angle:



LUMINANCE cd/(m2)		
G(DEG)	C0/180	C90/270
85	5144	3895
80	12779	12933
75	12193	12228
70	15360	14066
65	21950	17565
60	30096	23205
55	39450	29685
50	51817	40481
45	70120	56603

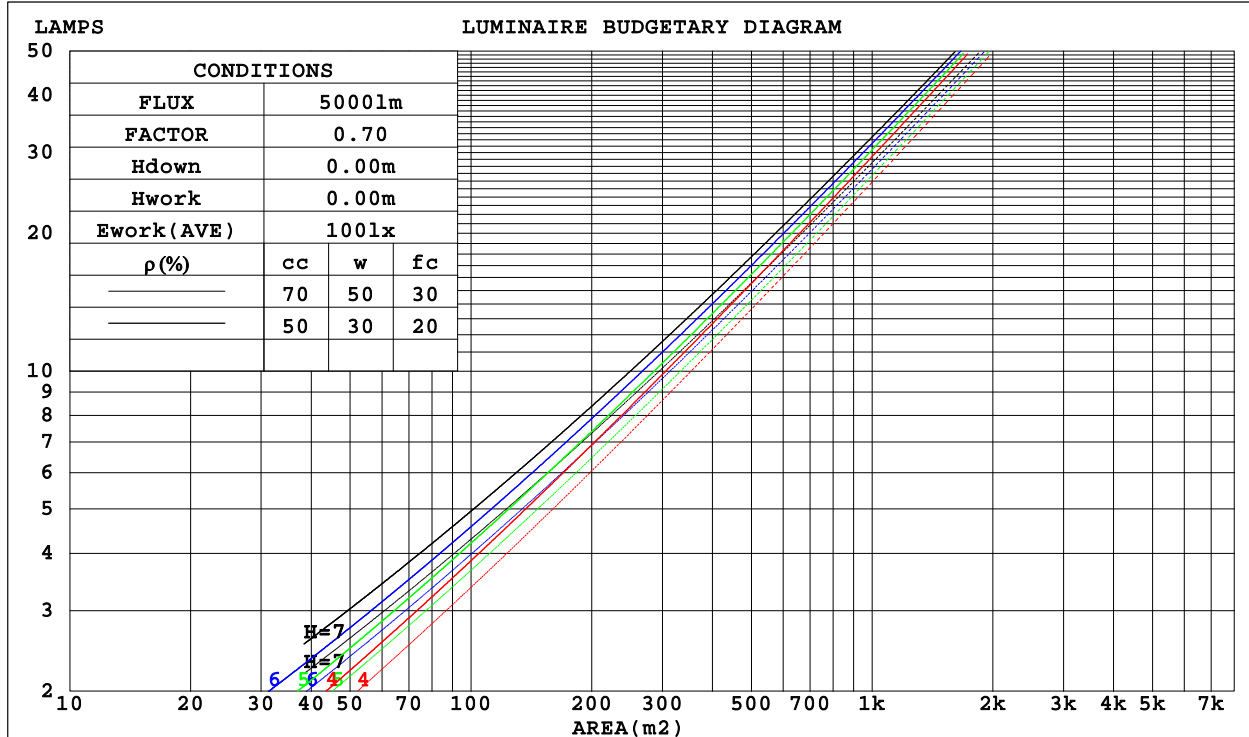
C Range: 0 - 360DEG
C Interval: 15.0DEG
Test Speed: HIGH
Temperature:25.3DEG
Operators:DAMIN
Test Date:2022-04-09

γ Range: 0 - 90DEG
γ Interval: 1.0DEG
Test System:EVERFINE GO-3000H_V1 SYSTEM V2.00.411
Humidity:65.0%
Test Distance:9.000m [K=1.0000]
Remarks:

CU AND LUMINAIRE BUDGETARY ESTIMATE DIAGRAM

Test:U:11.962V I:0.4232A P:3.5002W PF:0.6914 Freq:60.00Hz Lamp Flux:334.884x1 lm		
NAME: 486741-MR16-3W-3000K-60°	TYPE:	WEIGHT:
SPEC.:	DIM.:	SERIAL No.:
MFR.:	SUR.:35mm	Shielding Angle:

ρ _{cc}	80%			70%			50%			30%			10%			0
ρ _w	50%	30%	10%	50%	30%	10%	50%	30%	10%	50%	30%	10%	50%	30%	10%	0
ρ _{fc}	20%			20%			20%			20%			20%			0
RCR	RCR:Room Cavity Ratio															
	Coefficients of Utilization(CU)															
0.0	1.19	1.19	1.19	1.16	1.16	1.16	1.11	1.11	1.11	1.06	1.06	1.06	1.02	1.02	1.02	.00
1.0	1.09	1.06	1.04	1.07	1.04	1.02	1.03	1.01	.99	.99	.97	.96	.96	.94	.93	.91
2.0	.00	.95	.91	.98	.94	.90	.95	.91	.88	.92	.89	.86	.89	.86	.84	.82
3.0	.92	.86	.81	.90	.85	.80	.87	.83	.79	.85	.81	.78	.83	.79	.77	.75
4.0	.84	.78	.73	.83	.77	.73	.81	.76	.72	.79	.74	.71	.77	.73	.70	.68
5.0	.78	.71	.66	.77	.71	.66	.75	.70	.65	.73	.69	.65	.72	.68	.64	.62
6.0	.72	.66	.61	.72	.65	.60	.70	.64	.60	.68	.63	.60	.67	.63	.59	.58
7.0	.67	.61	.56	.67	.60	.56	.65	.60	.55	.64	.59	.55	.63	.58	.55	.53
8.0	.63	.56	.52	.62	.56	.52	.61	.55	.51	.60	.55	.51	.59	.54	.51	.49
9.0	.59	.53	.48	.59	.52	.48	.58	.52	.48	.57	.51	.48	.56	.51	.47	.46
10.0	.56	.49	.45	.55	.49	.45	.54	.49	.45	.53	.48	.45	.53	.48	.44	.43



C Range: 0 - 360DEG
 C Interval: 15.0DEG
 Test Speed: HIGH
 Temperature:25.3DEG
 Operators:DAMIN
 Test Date:2022-04-09

γ Range: 0 - 90DEG
 γ Interval: 1.0DEG
 Test System:EVERFINE GO-3000H_V1 SYSTEM V2.00.411
 Humidity:65.0%
 Test Distance:9.000m [K=1.0000]
 Remarks:

WEC AND CCEC

Test:U:11.962V I:0.4232A P:3.5002W PF:0.6914 Freq:60.00Hz Lamp Flux:334.884x1 lm		
NAME: 486741-MR16-3W-3000K-60°	TYPE:	WEIGHT:
SPEC.:	DIM.:	SERIAL No.:
MFR.:	SUR.:35mm	Shielding Angle:

pcc	80%			70%			50%			30%			10%			0
pw	50%	30%	10%	50%	30%	10%	50%	30%	10%	50%	30%	10%	50%	30%	10%	0
pfc	20%			20%			20%			20%			20%			0
RCR	RCR:Room Cavity Ratio						Wall Exitance Coefficients(WEC)									
0.0																
1.0	.210	.120	.038	.203	.116	.037	.191	.109	.035	.179	.103	.033	.168	.097	.031	
2.0	.202	.111	.034	.196	.108	.033	.185	.103	.032	.175	.098	.031	.166	.094	.030	
3.0	.192	.102	.031	.187	.100	.030	.177	.096	.029	.169	.092	.028	.161	.089	.028	
4.0	.181	.094	.028	.177	.093	.027	.169	.090	.027	.161	.087	.026	.154	.084	.026	
5.0	.171	.087	.025	.168	.086	.025	.160	.084	.025	.154	.081	.024	.147	.079	.024	
6.0	.162	.081	.023	.159	.080	.023	.153	.078	.023	.147	.076	.022	.141	.074	.022	
7.0	.154	.076	.022	.151	.075	.021	.145	.073	.021	.140	.072	.021	.135	.070	.021	
8.0	.146	.071	.020	.143	.071	.020	.138	.069	.020	.134	.068	.020	.129	.066	.019	
9.0	.139	.067	.019	.136	.067	.019	.132	.065	.018	.128	.064	.018	.124	.063	.018	
10.0	.132	.063	.018	.130	.063	.018	.126	.062	.017	.122	.061	.017	.119	.060	.017	

pcc	80%			70%			50%			30%			10%			0
pw	50%	30%	10%	50%	30%	10%	50%	30%	10%	50%	30%	10%	50%	30%	10%	0
pfc	20%			20%			20%			20%			20%			0
RCR	RCR:Room Cavity Ratio						Ceiling Cavity Exitance Coefficients(CCEC)									
0.0	.190	.190	.190	.163	.163	.163	.111	.111	.111	.064	.064	.064	.020	.020	.020	
1.0	.173	.157	.142	.148	.135	.122	.101	.093	.085	.058	.054	.049	.019	.017	.016	
2.0	.160	.132	.109	.137	.114	.094	.094	.079	.066	.054	.046	.038	.017	.015	.013	
3.0	.149	.114	.085	.128	.098	.074	.088	.068	.052	.051	.040	.031	.016	.013	.010	
4.0	.140	.099	.068	.120	.086	.059	.083	.060	.042	.048	.035	.025	.015	.011	.008	
5.0	.132	.088	.056	.113	.076	.049	.078	.053	.034	.045	.031	.020	.015	.010	.007	
6.0	.125	.079	.047	.107	.069	.041	.074	.048	.029	.043	.028	.017	.014	.009	.006	
7.0	.118	.072	.039	.102	.062	.034	.070	.044	.024	.041	.026	.014	.013	.008	.005	
8.0	.113	.066	.034	.097	.057	.029	.067	.040	.021	.039	.024	.012	.013	.008	.004	
9.0	.107	.061	.029	.092	.053	.026	.064	.037	.018	.037	.022	.011	.012	.007	.004	
10.0	.102	.056	.026	.088	.049	.023	.061	.034	.016	.036	.020	.010	.012	.007	.003	

C Range: 0 - 360DEG
 C Interval: 15.0DEG
 Test Speed: HIGH
 Temperature:25.3DEG
 Operators:DAMIN
 Test Date:2022-04-09

γ Range: 0 - 90DEG
 γ Interval: 1.0DEG
 Test System:EVERFINE GO-3000H_V1 SYSTEM V2.00.411
 Humidity:65.0%
 Test Distance:9.000m [K=1.0000]
 Remarks:

UGR(Unified Glare Rating) Table

Test:U:11.962V I:0.4232A P:3.5002W PF:0.6914 Freq:60.00Hz Lamp Flux:334.884x1 lm										
NAME: 486741-MR16-3W-3000K-60°					TYPE:			WEIGHT:		
SPEC.:					DIM.:			SERIAL No.:		
MFR.:					SUR.:35mm			Shielding Angle:		
ceiling/cavity	0.7	0.7	0.5	0.5	0.3	0.7	0.7	0.5	0.5	0.3
walls	0.5	0.3	0.5	0.3	0.3	0.5	0.3	0.5	0.3	0.3
working plane	0.2	0.2	0.2	0.2	0.2	0.2	0.2	0.2	0.2	0.2
Room dimensions	Viewed crosswise					Viewed endwise				
x = 2H y = 2H	23.3	24.4	23.5	24.6	24.8	22.4	23.5	22.6	23.7	23.9
3H	23.5	24.5	23.8	24.7	24.9	22.6	23.6	22.9	23.8	24.0
4H	23.5	24.5	23.8	24.7	25.0	22.6	23.6	22.9	23.8	24.1
6H	23.6	24.5	23.9	24.7	25.0	22.7	23.6	23.0	23.9	24.1
8H	23.6	24.4	23.9	24.7	25.0	22.7	23.6	23.0	23.9	24.1
12H	23.5	24.4	23.9	24.7	24.9	22.7	23.5	23.0	23.8	24.1
4H 2H	23.3	24.3	23.6	24.5	24.7	22.5	23.5	22.8	23.7	23.9
3H	23.6	24.4	23.9	24.7	25.0	22.8	23.6	23.1	23.9	24.2
4H	23.7	24.4	24.0	24.7	25.1	22.9	23.6	23.2	24.0	24.3
6H	23.8	24.4	24.2	24.8	25.1	23.0	23.7	23.4	24.0	24.4
8H	23.8	24.4	24.2	24.8	25.2	23.1	23.7	23.5	24.1	24.4
12H	23.8	24.4	24.2	24.7	25.1	23.1	23.6	23.5	24.0	24.4
8H 4H	23.6	24.3	24.0	24.6	25.0	22.9	23.5	23.3	23.9	24.2
6H	23.8	24.3	24.2	24.7	25.1	23.1	23.6	23.5	24.0	24.4
8H	23.9	24.3	24.3	24.7	25.2	23.2	23.6	23.6	24.1	24.5
12H	23.9	24.2	24.3	24.7	25.2	23.2	23.6	23.6	24.0	24.5
12H 4H	23.6	24.2	24.0	24.5	24.9	22.9	23.4	23.3	23.8	24.2
6H	23.8	24.2	24.2	24.7	25.1	23.1	23.6	23.6	24.0	24.4
8H	23.9	24.3	24.3	24.7	25.2	23.2	23.6	23.7	24.0	24.5
Variations with the observer position at spacings:										
S = 1.0H	+ 1.2 / - 1.5					+ 1.2 / - 1.7				
1.5H	+ 1.8 / - 1.2					+ 1.7 / - 1.2				
2.0H	+ 2.5 / - 1.8					+ 2.1 / - 1.6				

CIE Pub.117, 334.9 lm Total Lamp Luminous Flux Corrected (8log(F/F0) = -3.8)
Area: 0.001 m2

C Range: 0 - 360DEG
C Interval: 15.0DEG
Test Speed: HIGH
Temperature:25.3DEG
Operators:DAMIN
Test Date:2022-04-09

γ Range: 0 - 90DEG
γ Interval: 1.0DEG
Test System:EVERFINE GO-3000H_V1 SYSTEM V2.00.411
Humidity:65.0%
Test Distance:9.000m [K=1.0000]
Remarks:

UTILIZATION FACTORS TABLE

Test:U:11.962V I:0.4232A P:3.5002W PF:0.6914 Freq:60.00Hz Lamp Flux:334.884x1 lm		
NAME: 486741-MR16-3W-3000K-60°	TYPE:	WEIGHT:
SPEC.:	DIM.:	SERIAL No.:
MFR.:	SUR.:35mm	Shielding Angle:

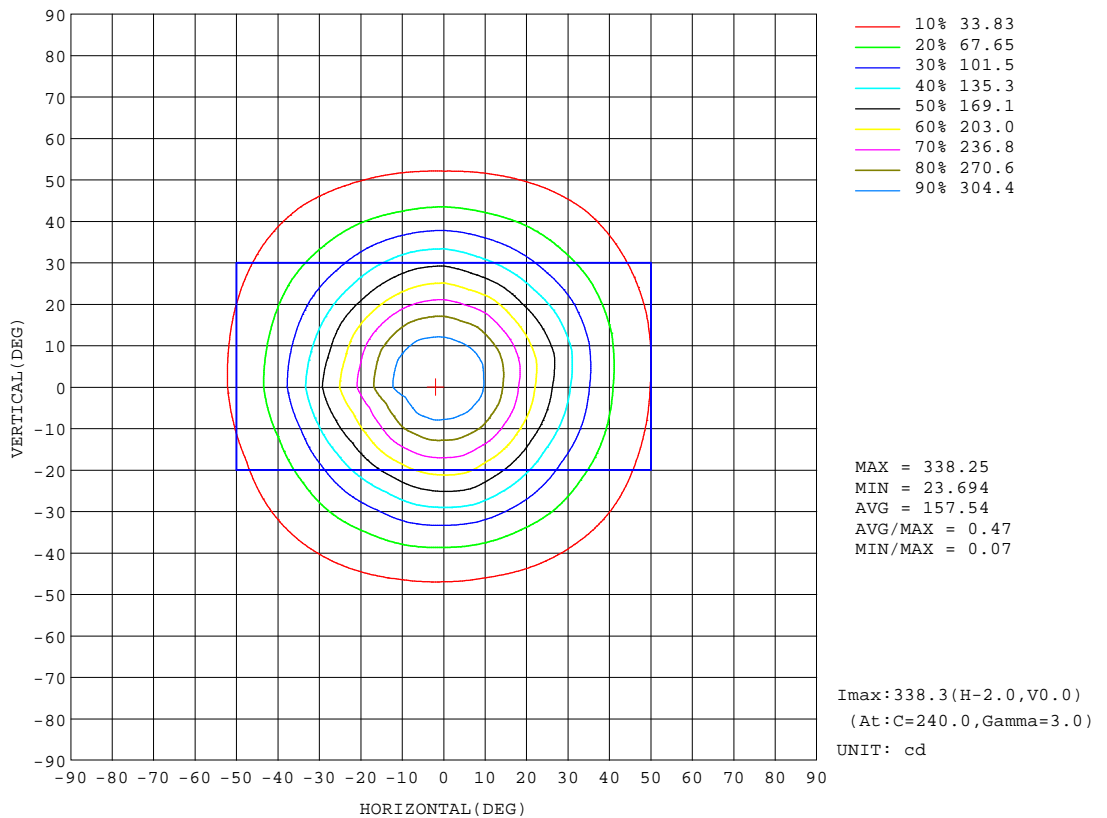
REFLECTANCE										
Ceiling	0.8	0.8	0.8	0.7	0.7	0.7	0.5	0.5	0.5	0
Walls	0.7	0.5	0.3	0.7	0.5	0.3	0.7	0.5	0.3	0
Working plane	0.2	0.2	0.2	0.2	0.2	0.2	0.2	0.2	0.2	0
ROOM INDEX	UTILIZATION FACTORS(PERCENT) k(RI) x RCR = 5									
k = 0.60	77	69	64	76	68	64	75	68	63	59
0.80	86	78	73	85	77	73	83	77	72	67
1.00	92	84	80	91	84	79	89	84	79	74
1.25	97	90	86	96	90	85	94	88	84	79
1.50	101	94	90	99	94	89	97	92	88	83
2.00	105	99	95	103	98	94	100	96	93	87
2.50	107	102	98	105	101	97	102	98	95	89
3.00	109	105	101	107	103	100	104	101	98	91
4.00	112	108	105	109	106	104	106	103	101	93
5.00	113	110	108	111	108	106	107	105	103	95
ROOM INDEX	UF(total)									Direct
According to DIN EN 13032-2 2004			Suspended				SHRNOM = 1.25			

C Range: 0 - 360DEG
C Interval: 15.0DEG
Test Speed: HIGH
Temperature:25.3DEG
Operators:DAMIN
Test Date:2022-04-09

γ Range: 0 - 90DEG
γ Interval: 1.0DEG
Test System:EVERFINE GO-3000H_V1 SYSTEM V2.00.411
Humidity:65.0%
Test Distance:9.000m [K=1.0000]
Remarks:

ISOCANDELA DIAGRAM

Test:U:11.962V I:0.4232A P:3.5002W PF:0.6914 Freq:60.00Hz Lamp Flux:334.884x1 lm		
NAME: 486741-MR16-3W-3000K-60°	TYPE:	WEIGHT:
SPEC.:	DIM.:	SERIAL No.:
MFR.:	SUR.:35mm	Shielding Angle:



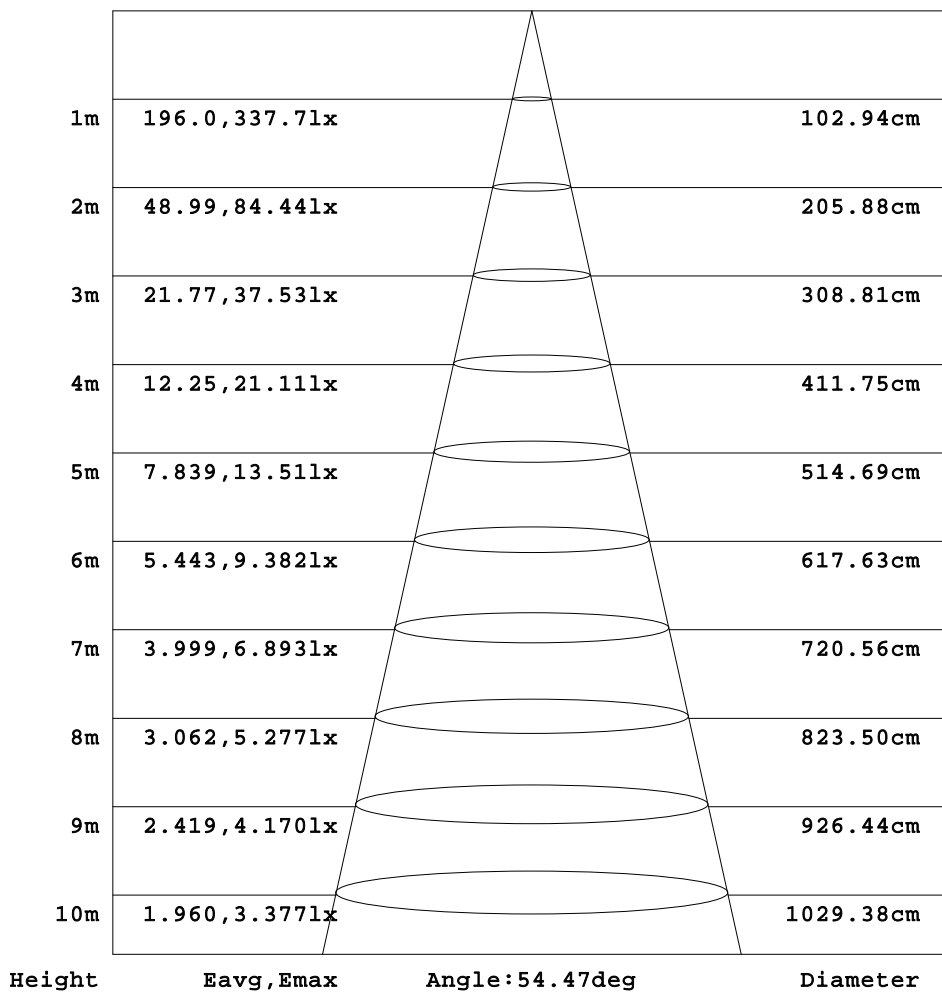
C Range: 0 - 360DEG
C Interval: 15.0DEG
Test Speed: HIGH
Temperature:25.3DEG
Operators:DAMIN
Test Date:2022-04-09

γ Range: 0 - 90DEG
γ Interval: 1.0DEG
Test System:EVERFINE GO-3000H_V1 SYSTEM V2.00.411
Humidity:65.0%
Test Distance:9.000m [K=1.0000]
Remarks:

AAI Figure

Test:U:11.962V I:0.4232A P:3.5002W PF:0.6914 Freq:60.00Hz Lamp Flux:334.884x1 lm		
NAME: 486741-MR16-3W-3000K-60°	TYPE:	WEIGHT:
SPEC.:	DIM.:	SERIAL No.:
MFR.:	SUR.:35mm	Shielding Angle:

Flux out:174.0 lm



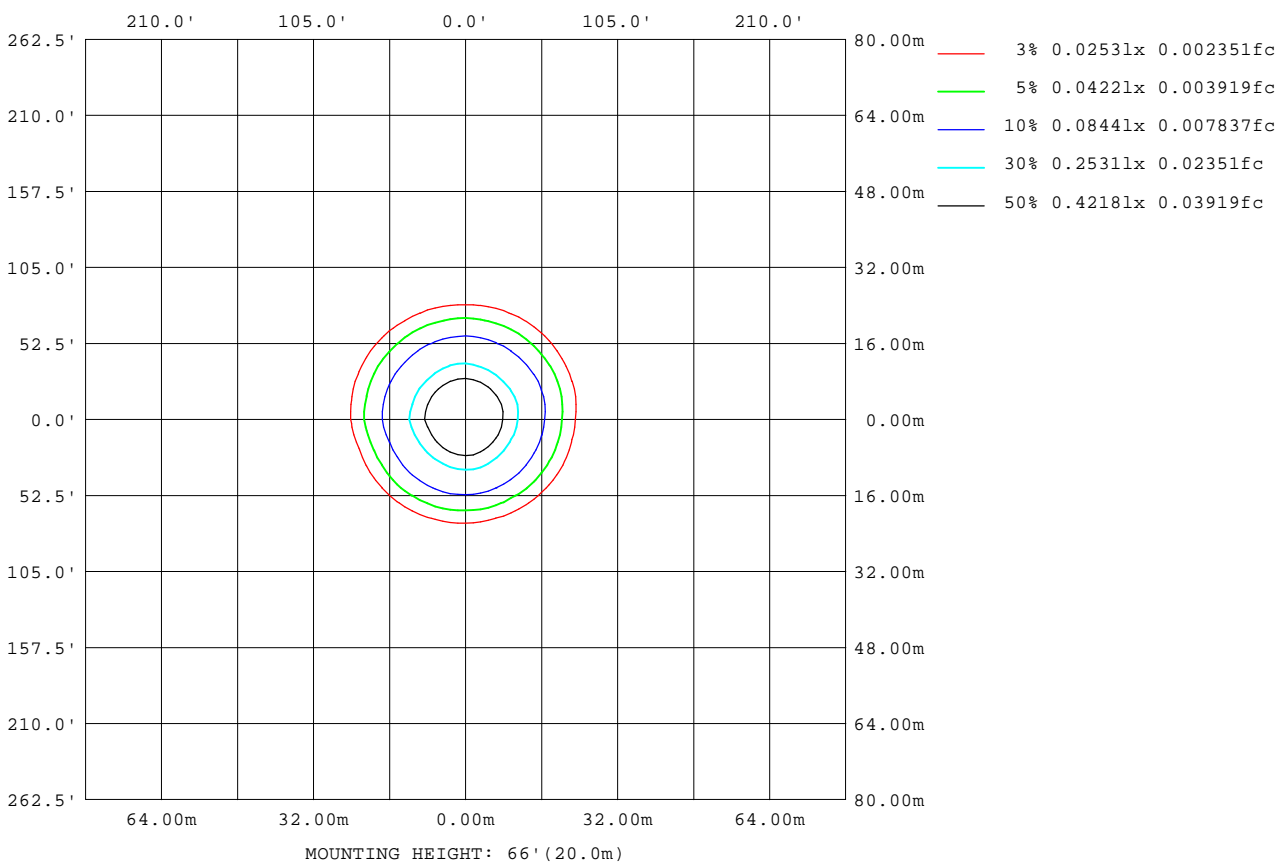
Note:The Curves indicate the illuminated area and the average illumination when the luminaire is at different distance.

C Range: 0 - 360DEG
C Interval: 15.0DEG
Test Speed: HIGH
Temperature:25.3DEG
Operators:DAMIN
Test Date:2022-04-09

γ Range: 0 - 90DEG
γ Interval: 1.0DEG
Test System:EVERFINE GO-3000H_V1 SYSTEM V2.00.411
Humidity:65.0%
Test Distance:9.000m [K=1.0000]
Remarks:

ISOLUX DIAGRAM

Test:U:11.962V I:0.4232A P:3.5002W PF:0.6914 Freq:60.00Hz Lamp Flux:334.884x1 lm		
NAME: 486741-MR16-3W-3000K-60°	TYPE:	WEIGHT:
SPEC.:	DIM.:	SERIAL No.:
MFR.:	SUR.:35mm	Shielding Angle:



C Range: 0 - 360DEG
C Interval: 15.0DEG
Test Speed: HIGH
Temperature:25.3DEG
Operators:DAMIN
Test Date:2022-04-09

γ Range: 0 - 90DEG
γ Interval: 1.0DEG
Test System:EVERFINE GO-3000H_V1 SYSTEM V2.00.411
Humidity:65.0%
Test Distance:9.000m [K=1.0000]
Remarks:

LED Avg.L Report

Test:U:11.962V I:0.4232A P:3.5002W PF:0.6914 Freq:60.00Hz Lamp Flux:334.884x1 lm		
NAME: 486741-MR16-3W-3000K-60°	TYPE:	WEIGHT:
SPEC.:	DIM.:	SERIAL No.:
MFR.:	SUR.:35mm	Shielding Angle:

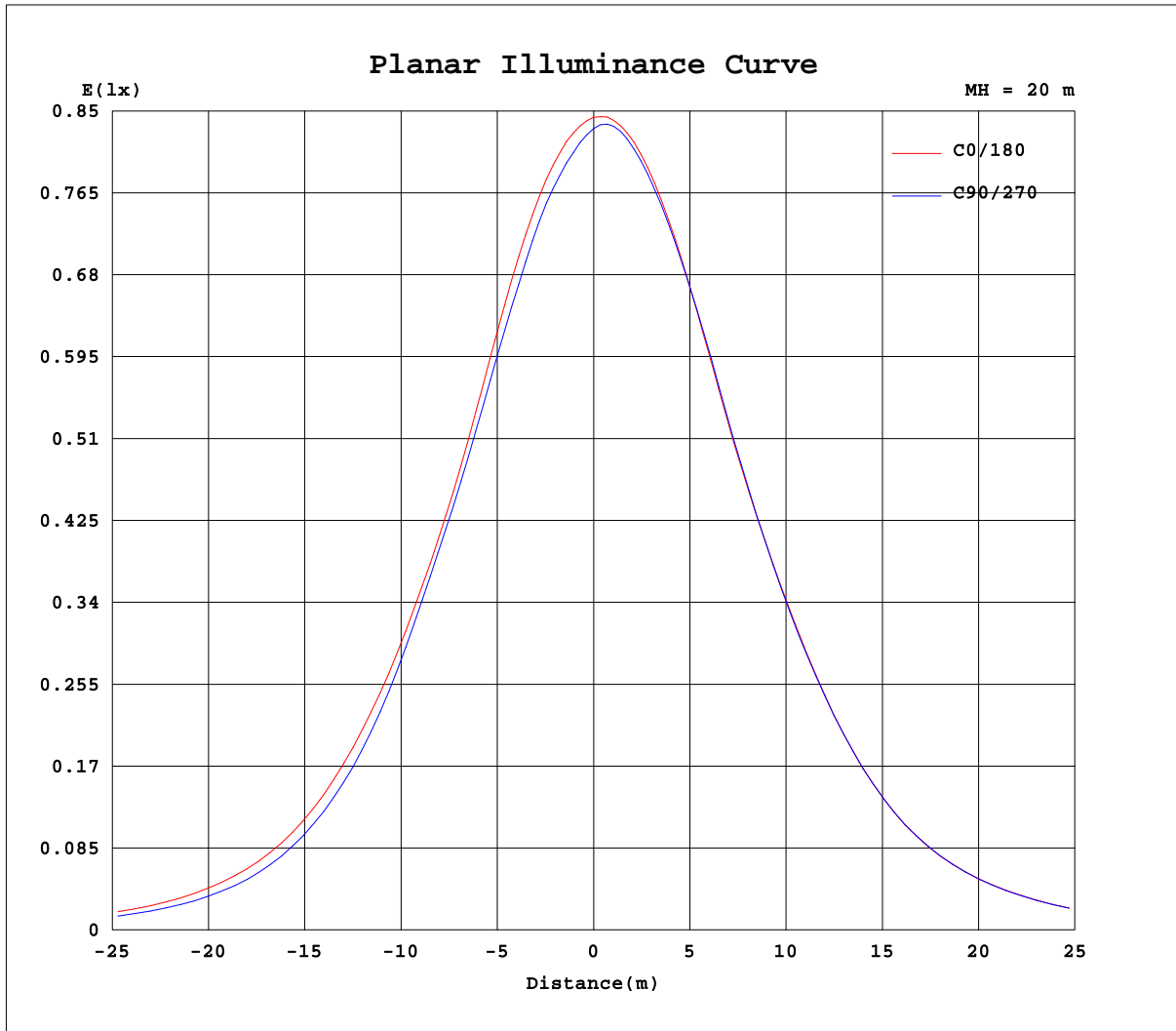
AvgL	cd/m2
L_0~180(65)av	24594
L_0~180(75)av	14118
L_0~180(85)av	10582
L_90~270(65)av	22619
L_90~270(75)av	14792
L_90~270(85)av	12137
L_45(65)av	25860
L_45(75)av	14930
L_45(85)av	10926

Standard: GB/T 29293-2012

C Range: 0 - 360DEG
C Interval: 15.0DEG
Test Speed: HIGH
Temperature:25.3DEG
Operators:DAMIN
Test Date:2022-04-09

γ Range: 0 - 90DEG
γ Interval: 1.0DEG
Test System:EVERFINE GO-3000H_V1 SYSTEM V2.00.411
Humidity:65.0%
Test Distance:9.000m [K=1.0000]
Remarks:

Planar Illuminance Curve



C Range: 0 - 360DEG
 C Interval: 15.0DEG
 Test Speed: HIGH
 Temperature: 25.3DEG
 Operators: DAMIN
 Test Date: 2022-04-09

γ Range: 0 - 90DEG
 γ Interval: 1.0DEG
 Test System: EVERFINE GO-3000H_V1 SYSTEM V2.00.411
 Humidity: 65.0%
 Test Distance: 9.000m [K=1.0000]
 Remarks:

LUMINOUS DISTRIBUTION INTENSITY DATA

Test:U:11.962V I:0.4232A P:3.5002W PF:0.6914 Freq:60.00Hz Lamp Flux:334.884x1 lm		
NAME: 486741-MR16-3W-3000K-60°	TYPE:	WEIGHT:
SPEC.:	DIM.:	SERIAL No.:
MFR.:	SUR.:35mm	Shielding Angle:

Table--1

UNIT: cd

C(DEG) γ (DEG)	0	15	30	45	60	75	90	105	120	135	150	165	180	195	210	225	240	255	270
0	333	333	333	333	333	333	333	333	333	333	333	333	333	333	333	333	333	333	333
5	323	322	320	319	318	318	318	320	321	322	323	326	331	332	334	334	335	334	333
10	299	298	294	294	292	292	291	294	296	299	300	304	314	315	318	318	319	317	316
15	261	259	255	255	253	255	254	256	257	262	263	268	282	284	289	289	291	288	287
20	217	214	210	209	209	214	213	213	214	217	218	226	241	242	247	247	249	248	246
25	177	171	165	164	166	172	171	170	168	171	175	187	202	199	202	201	202	204	204
30	138	131	124	123	125	128	127	128	125	130	136	148	161	158	159	156	159	163	163
35	102	96.4	90.3	89.8	88.7	90.2	90.2	92.3	91.6	95.6	99.0	108	121	119	120	117	121	122	122
40	71.2	67.8	63.7	62.7	60.5	61.0	60.8	62.7	63.5	67.1	69.3	74.8	85.7	86.5	87.5	86.0	87.2	86.4	87.1
45	49.0	46.9	44.1	42.5	40.9	39.6	40.1	40.9	43.3	46.3	47.9	51.9	59.7	60.6	61.8	60.8	61.3	60.0	60.5
50	32.9	31.3	30.3	28.4	27.2	25.7	26.1	27.1	29.2	31.1	32.9	34.4	39.7	41.8	43.1	42.8	41.6	41.1	40.1
55	22.4	21.3	20.7	19.3	18.0	17.0	17.1	17.9	19.6	21.4	22.4	22.9	26.4	28.4	29.6	29.8	28.3	27.5	26.6
60	14.9	14.4	14.0	13.1	12.2	11.5	11.6	12.3	13.5	14.8	15.2	15.6	17.7	19.1	20.3	20.4	19.3	18.4	18.0
65	9.17	8.91	8.74	8.17	7.66	7.29	7.44	7.87	8.67	9.58	9.83	10.01	11.6	12.5	13.4	13.4	12.6	12.0	11.7
70	5.19	5.18	5.17	4.97	4.78	4.68	4.82	5.05	5.50	6.05	6.16	6.14	7.09	7.57	8.15	8.07	7.53	7.17	7.01
75	3.12	3.12	3.09	3.07	3.09	3.08	3.17	3.30	3.43	3.65	3.73	3.69	4.19	4.43	4.69	4.68	4.38	4.44	4.48
80	2.19	2.18	2.18	2.17	2.21	2.18	2.25	2.32	2.40	2.52	2.55	2.53	2.73	2.81	2.83	2.80	2.71	3.00	3.03
85	0.44	0.32	0.23	0.21	0.23	0.23	0.34	0.45	0.55	0.67	0.74	0.81	1.40	1.54	1.66	1.70	1.63	1.88	1.78
90	0.00	0.00	0.00	0.00	0.00	0.00	0.00	0.00	0.00	0.00	0.00	0.00	0.01	0.01	0.02	0.02	0.01	0.01	0.01

C Range: 0 - 360DEG γ Range: 0 - 90DEG
 C Interval: 15.0DEG γ Interval: 1.0DEG
 Test Speed: HIGH Test System:EVERFINE GO-3000H_V1 SYSTEM V2.00.411
 Temperature:25.3DEG Humidity:65.0%
 Operators:DAMIN Test Distance:9.000m [K=1.0000]
 Test Date:2022-04-09 Remarks:

LUMINOUS DISTRIBUTION INTENSITY DATA

Test:U:11.962V I:0.4232A P:3.5002W PF:0.6914 Freq:60.00Hz Lamp Flux:334.884x1 lm		
NAME: 486741-MR16-3W-3000K-60°	TYPE:	WEIGHT:
SPEC.:	DIM.:	SERIAL No.:
MFR.:	SUR.:35mm	Shielding Angle:

Table--2

UNIT: cd

C(DEG) γ (DEG)	285	300	315	330	345															
0	333	333	333	333	333															
5	331	331	330	329	327															
10	313	314	312	311	306															
15	282	284	280	278	272															
20	241	242	236	234	230															
25	196	196	190	190	191															
30	154	152	148	151	153															
35	117	114	112	114	113															
40	84.2	83.2	81.2	81.9	79.6															
45	58.8	59.1	57.5	57.4	55.4															
50	40.6	40.7	40.4	38.9	37.6															
55	27.4	28.2	28.3	26.7	25.2															
60	18.4	19.4	19.5	18.3	17.0															
65	11.9	12.5	12.5	11.7	10.7															
70	7.02	7.33	7.31	6.68	6.12															
75	4.13	4.12	4.06	3.78	3.57															
80	2.62	2.53	2.49	2.47	2.42															
85	1.44	1.34	1.24	1.15	0.99															
90	0.01	0.01	0.01	0.01	0.01															

C Range: 0 - 360DEG
 C Interval: 15.0DEG
 Test Speed: HIGH
 Temperature:25.3DEG
 Operators:DAMIN
 Test Date:2022-04-09

γ Range: 0 - 90DEG
 γ Interval: 1.0DEG
 Test System:EVERFINE GO-3000H_V1 SYSTEM V2.00.411
 Humidity:65.0%
 Test Distance:9.000m [K=1.0000]
 Remarks: