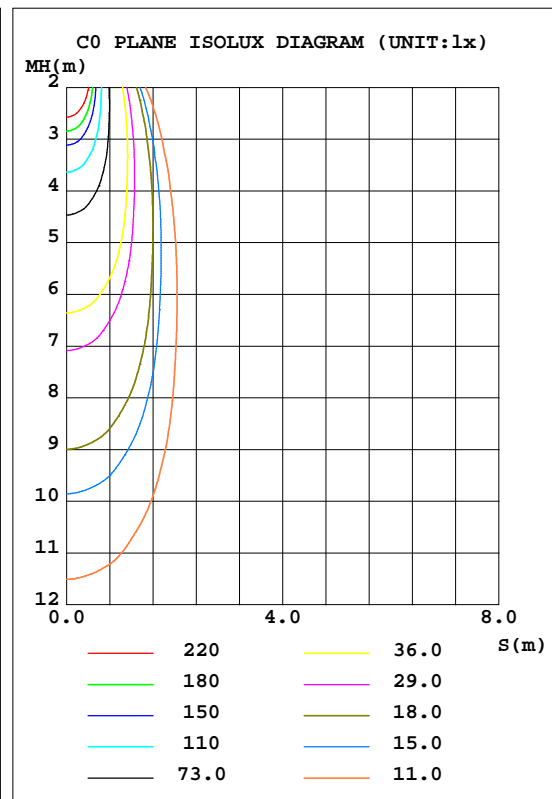
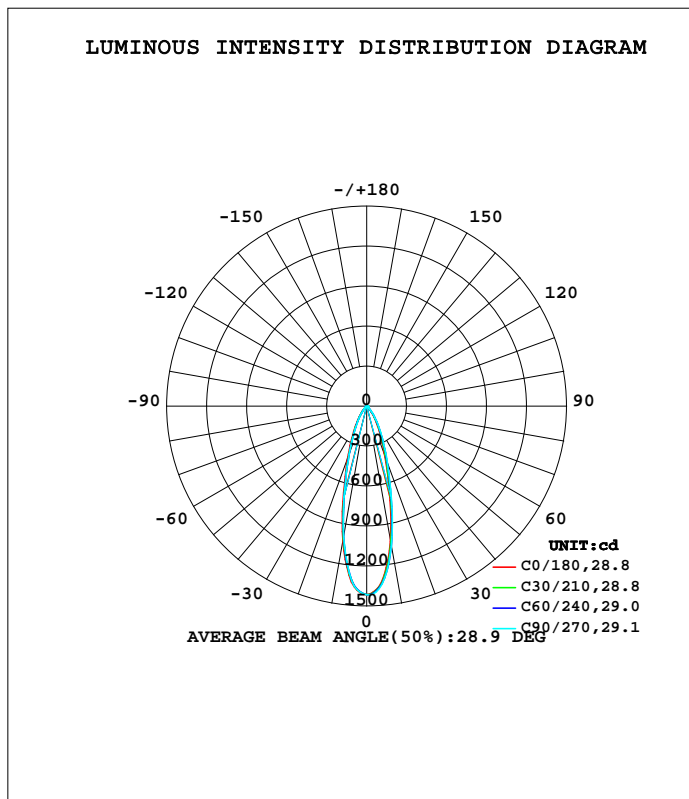


LUMINAIRE PHOTOMETRIC TEST REPORT

Test:U:11.786V I:0.6848A P:6.1325W PF:0.7599 Freq:60.00Hz Lamp Flux:528.794x1 lm		
NAME: 486712-MR16-7W-2700K-25°	TYPE:	WEIGHT:
SPEC.:	DIM.:	SERIAL No.:
MFR.:	SUR.:35mm	Shielding Angle:

DATA OF LAMP		PHOTOMETRIC DATA Eff: 86.23 lm/W			
MODEL		I _{max} (cd)	1417	S/MH(C0/180)	0.48
NOMINAL POWER(W)	--	LOR(%)	100.0	S/MH(C90/270)	0.47
RATED VOLTAGE(V)	--	TOTAL FLUX(lm)	528.79	η UP,DN(C0-180)	0.0,51.8
NOMINAL FLUX(lm)	528.794	CIE CLASS	DIRECT	η UP,DN(C180-360)	0.0,48.2
LAMPS INSIDE	1	η up(%)	0.0	CIBSE SHR NOM	0.50
TEST VOLTAGE(V)	--	η down(%)	100.0	CIBSE SHR MAX	0.50



C Range: 0 - 360DEG
 C Interval: 15.0DEG
 Test Speed: HIGH
 Temperature:25.3DEG
 Operators:DAMIN
 Test Date:2022-05-29

γ Range: 0 - 90DEG
 γ Interval: 1.0DEG
 Test System:EVERFINE GO-3000H_V1 SYSTEM V2.00.411
 Humidity:65.0%
 Test Distance:9.000m [K=1.0000]
 Remarks:

ZONAL FLUX DIAGRAM

ZONAL FLUX DIAGRAM:

γ	C0	C45	C90	C135	C180	C225	C270	C315	γ	Φ zone	Φ total	%lum,lamp
10	1029	1062	1068	1030	1031	1000	1000	1029	0- 10	116.7	116.7	22.1,22.1
20	404.7	448.1	460.1	443.6	423.6	386.1	386.1	402.0	10- 20	186.8	303.5	57.4,57.4
30	156.4	180.5	188.6	176.3	163.8	146.5	142.7	147.6	20- 30	122.1	425.6	80.5,80.5
40	48.82	58.86	60.36	56.96	53.09	44.02	39.24	43.69	30- 40	61.51	487.1	92.1,92.1
50	13.70	14.38	14.59	14.50	15.08	14.43	13.27	13.87	40- 50	20.38	507.5	96,96
60	10.65	10.85	6.986	11.43	11.65	10.98	5.862	10.73	50- 60	10.81	518.3	98,98
70	6.871	5.258	2.306	5.076	7.518	4.767	2.286	5.583	60- 70	7.630	525.9	99.5,99.5
80	1.997	0.3853	0.0674	0.2458	2.241	0.2321	0.0404	0.5552	70- 80	2.627	528.6	100,100
90	0	0	0	0	0.0058	0.0022	0	0.0053	80- 90	0.2363	528.8	100,100
100									90-100			
110									100-110			
120									110-120			
130									120-130			
140									130-140			
150									140-150			
160									150-160			
170									160-170			
180									170-180			
DEG	LUMINOUS INTENSITY:cd									UNIT:lm		

Conical surface Flux(90deg): 500.2 lm

%lum = 94.6%
%lamp = 94.6%

Conical surface Flux(120deg): 518.3 lm

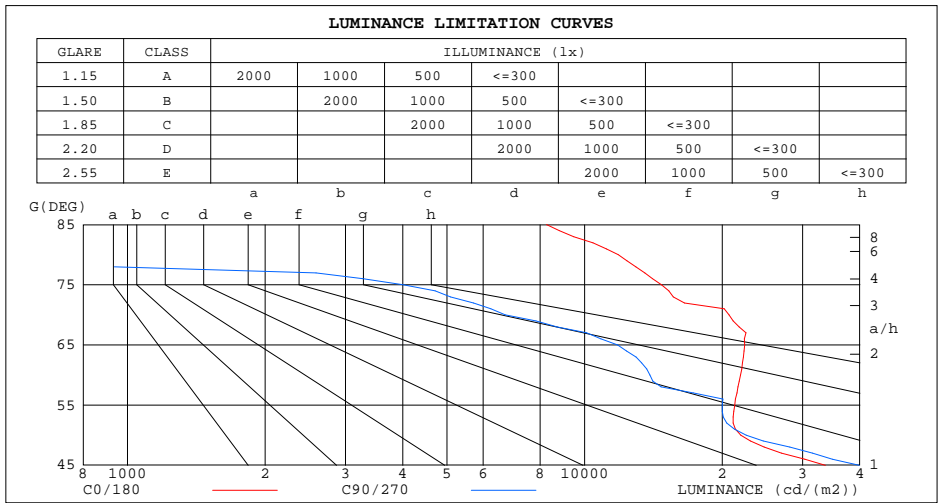
%lum = 98.0%
%lamp = 98.0%

C Range: 0 - 360DEG
C Interval: 15.0DEG
Test Speed: HIGH
Temperature:25.3DEG
Operators:DAMIN
Test Date:2022-05-29

γ Range: 0 - 90DEG
 γ Interval: 1.0DEG
Test System:EVERFINE GO-3000H_V1 SYSTEM V2.00.411
Humidity:65.0%
Test Distance:9.000m [K=1.0000]
Remarks:

LUMINANCE LIMITATION CURVES

Test:U:11.786V I:0.6848A P:6.1325W PF:0.7599 Freq:60.00Hz Lamp Flux:528.794x1 lm		
NAME: 486712-MR16-7W-2700K-25°	TYPE:	WEIGHT:
SPEC.:	DIM.:	SERIAL No.:
MFR.:	SUR.:35mm	Shielding Angle:



LUMINANCE cd/(m2)		
G(DEG)	C0/180	C90/270
85	8254	2
80	11847	386
75	14734	4006
70	20695	6710
65	22405	11809
60	21934	13904
55	21305	20015
50	21961	22592
45	33637	39917

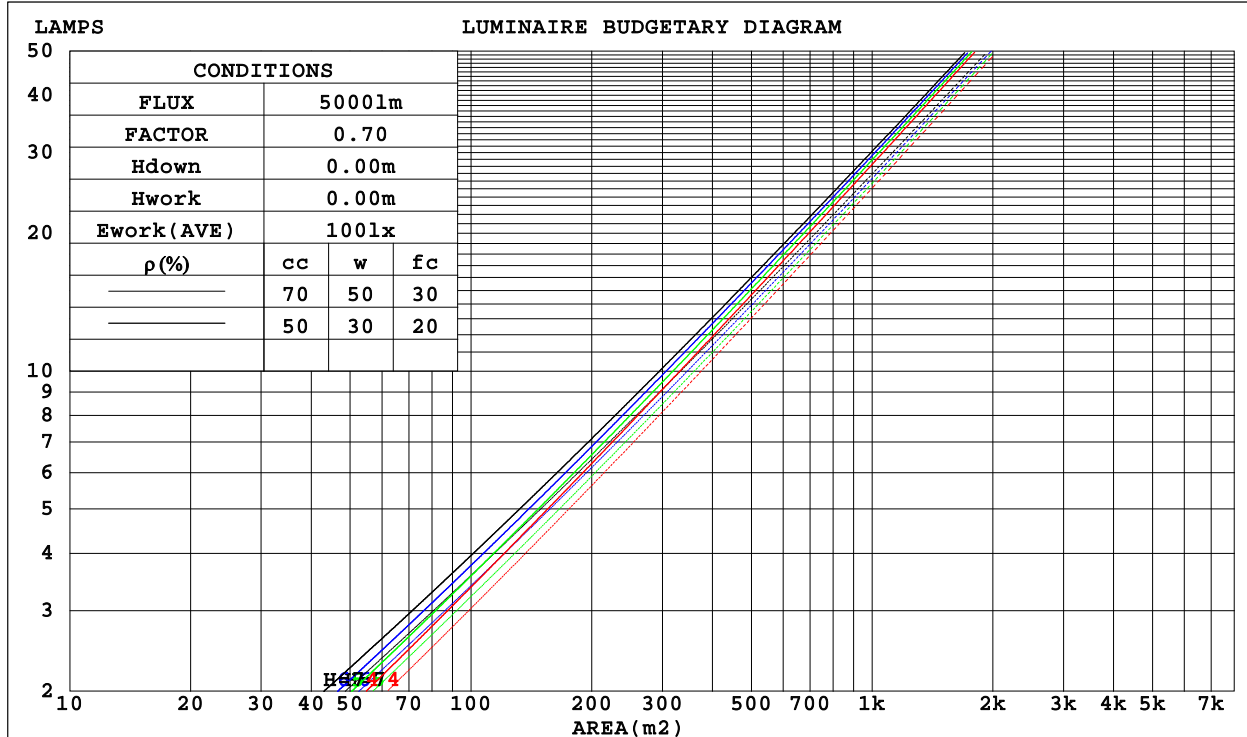
C Range: 0 - 360DEG
C Interval: 15.0DEG
Test Speed: HIGH
Temperature:25.3DEG
Operators:DAMIN
Test Date:2022-05-29

γ Range: 0 - 90DEG
γ Interval: 1.0DEG
Test System:EVERFINE GO-3000H_V1 SYSTEM V2.00.411
Humidity:65.0%
Test Distance:9.000m [K=1.0000]
Remarks:

CU AND LUMINAIRE BUDGETARY ESTIMATE DIAGRAM

Test:U:11.786V I:0.6848A P:6.1325W PF:0.7599 Freq:60.00Hz Lamp Flux:528.794x1 lm		
NAME: 486712-MR16-7W-2700K-25°	TYPE:	WEIGHT:
SPEC.:	DIM.:	SERIAL No.:
MFR.:	SUR.:35mm	Shielding Angle:

ρcc	80%			70%			50%			30%			10%			0
ρw	50%	30%	10%	50%	30%	10%	50%	30%	10%	50%	30%	10%	50%	30%	10%	0
ρfc	20%			20%			20%			20%			20%			0
RCR	RCR:Room Cavity Ratio						Coefficients of Utilization(CU)									
0.0	1.19	1.19	1.19	1.16	1.16	1.16	1.11	1.11	1.11	1.06	1.06	1.06	1.02	1.02	1.02	.00
1.0	1.11	1.09	1.07	1.09	1.07	1.05	1.05	1.04	1.02	1.01	1.00	.99	.98	.97	.96	.94
2.0	1.04	1.01	.98	1.03	.99	.97	.90	.97	.94	.97	.94	.92	.94	.92	.91	.89
3.0	.98	.94	.90	.97	.93	.90	.94	.91	.88	.92	.89	.87	.90	.87	.85	.84
4.0	.93	.88	.84	.92	.87	.84	.90	.86	.83	.88	.84	.82	.86	.83	.81	.79
5.0	.88	.83	.79	.87	.82	.79	.86	.81	.78	.84	.80	.77	.82	.79	.77	.75
6.0	.84	.79	.75	.83	.78	.75	.82	.77	.74	.80	.76	.74	.79	.76	.73	.72
7.0	.80	.75	.71	.79	.74	.71	.78	.74	.70	.77	.73	.70	.76	.72	.70	.68
8.0	.76	.71	.68	.76	.71	.67	.75	.70	.67	.74	.70	.67	.73	.69	.67	.65
9.0	.73	.68	.65	.73	.68	.64	.72	.67	.64	.71	.67	.64	.70	.67	.64	.63
10.0	.70	.65	.62	.70	.65	.62	.69	.65	.62	.68	.64	.61	.68	.64	.61	.60



C Range: 0 - 360DEG
 C Interval: 15.0DEG
 Test Speed: HIGH
 Temperature:25.3DEG
 Operators:DAMIN
 Test Date:2022-05-29

γ Range: 0 - 90DEG
 γ Interval: 1.0DEG
 Test System:EVERFINE GO-3000H_V1 SYSTEM V2.00.411
 Humidity:65.0%
 Test Distance:9.000m [K=1.0000]
 Remarks:

WEC AND CCEC

Test:U:11.786V I:0.6848A P:6.1325W PF:0.7599 Freq:60.00Hz Lamp Flux:528.794x1 lm		
NAME: 486712-MR16-7W-2700K-25°	TYPE:	WEIGHT:
SPEC.:	DIM.:	SERIAL No.:
MFR.:	SUR.:35mm	Shielding Angle:

pcc	80%			70%			50%			30%			10%			0
pw	50%	30%	10%	50%	30%	10%	50%	30%	10%	50%	30%	10%	50%	30%	10%	0
pfc	20%			20%			20%			20%			20%			0
RCR	RCR:Room Cavity Ratio						Wall Exitance Coefficients(WEC)									
0.0																
1.0	.166	.094	.030	.159	.091	.029	.147	.084	.027	.135	.078	.025	.125	.072	.023	
2.0	.157	.086	.026	.152	.084	.026	.141	.079	.024	.132	.074	.023	.123	.069	.022	
3.0	.148	.079	.024	.144	.077	.023	.135	.073	.022	.126	.069	.021	.119	.066	.020	
4.0	.140	.073	.021	.136	.071	.021	.128	.068	.020	.121	.065	.020	.115	.062	.019	
5.0	.132	.067	.020	.129	.066	.019	.122	.064	.019	.116	.061	.018	.110	.059	.018	
6.0	.125	.063	.018	.122	.062	.018	.117	.060	.017	.111	.058	.017	.106	.056	.017	
7.0	.119	.059	.017	.117	.058	.017	.112	.056	.016	.107	.055	.016	.102	.053	.016	
8.0	.114	.056	.016	.111	.055	.015	.107	.053	.015	.103	.052	.015	.099	.051	.015	
9.0	.109	.053	.015	.106	.052	.015	.102	.051	.014	.099	.049	.014	.095	.048	.014	
10.0	.104	.050	.014	.102	.049	.014	.098	.048	.014	.095	.047	.013	.092	.046	.013	

pcc	80%			70%			50%			30%			10%			0
pw	50%	30%	10%	50%	30%	10%	50%	30%	10%	50%	30%	10%	50%	30%	10%	0
pfc	20%			20%			20%			20%			20%			0
RCR	RCR:Room Cavity Ratio						Ceiling Cavity Exitance Coefficients(CCEC)									
0.0	.190	.190	.190	.163	.163	.163	.111	.111	.111	.064	.064	.064	.020	.020	.020	
1.0	.170	.157	.146	.146	.135	.125	.100	.093	.087	.057	.054	.050	.018	.017	.016	
2.0	.154	.133	.114	.132	.114	.099	.091	.079	.069	.052	.046	.040	.017	.015	.013	
3.0	.141	.113	.092	.121	.098	.079	.083	.068	.056	.048	.040	.033	.015	.013	.011	
4.0	.130	.099	.075	.111	.085	.065	.077	.059	.046	.044	.035	.027	.014	.011	.009	
5.0	.120	.087	.062	.103	.075	.054	.071	.052	.038	.041	.031	.023	.013	.010	.007	
6.0	.112	.077	.052	.097	.067	.045	.067	.047	.032	.039	.028	.019	.012	.009	.006	
7.0	.105	.069	.044	.091	.060	.038	.063	.042	.027	.036	.025	.016	.012	.008	.005	
8.0	.099	.063	.038	.085	.055	.033	.059	.038	.023	.034	.023	.014	.011	.007	.005	
9.0	.094	.057	.033	.081	.050	.029	.056	.035	.020	.033	.021	.012	.011	.007	.004	
10.0	.089	.053	.029	.077	.046	.025	.053	.032	.018	.031	.019	.011	.010	.006	.004	

C Range: 0 - 360DEG
 C Interval: 15.0DEG
 Test Speed: HIGH
 Temperature:25.3DEG
 Operators:DAMIN
 Test Date:2022-05-29

γ Range: 0 - 90DEG
 γ Interval: 1.0DEG
 Test System:EVERFINE GO-3000H_V1 SYSTEM V2.00.411
 Humidity:65.0%
 Test Distance:9.000m [K=1.0000]
 Remarks:

UGR(Unified Glare Rating) Table

Test:U:11.786V I:0.6848A P:6.1325W PF:0.7599 Freq:60.00Hz Lamp Flux:528.794x1 lm										
NAME: 486712-MR16-7W-2700K-25°					TYPE:			WEIGHT:		
SPEC.:					DIM.:			SERIAL No.:		
MFR.:					SUR.:35mm			Shielding Angle:		
ceiling/cavity	0.7	0.7	0.5	0.5	0.3	0.7	0.7	0.5	0.5	0.3
walls	0.5	0.3	0.5	0.3	0.3	0.5	0.3	0.5	0.3	0.3
working plane	0.2	0.2	0.2	0.2	0.2	0.2	0.2	0.2	0.2	0.2
Room dimensions	Viewed crosswise					Viewed endwise				
x = 2H y = 2H	20.0	20.9	20.3	21.0	21.2	20.2	21.1	20.4	21.2	21.4
3H	20.7	21.5	21.0	21.7	21.9	20.2	21.0	20.5	21.2	21.4
4H	20.9	21.6	21.2	21.9	22.1	20.2	20.9	20.5	21.1	21.4
6H	21.0	21.7	21.3	21.9	22.2	20.1	20.8	20.4	21.0	21.3
8H	21.0	21.7	21.3	21.9	22.2	20.1	20.7	20.4	21.0	21.2
12H	21.0	21.6	21.3	21.9	22.2	20.0	20.6	20.3	20.9	21.2
4H 2H	20.2	20.9	20.4	21.1	21.4	20.3	21.1	20.6	21.3	21.5
3H	21.1	21.7	21.4	22.0	22.2	20.4	21.0	20.7	21.3	21.6
4H	21.3	21.9	21.6	22.2	22.5	20.3	20.9	20.7	21.2	21.5
6H	21.4	22.0	21.8	22.3	22.6	20.2	20.8	20.6	21.1	21.4
8H	21.5	21.9	21.8	22.3	22.7	20.2	20.7	20.6	21.0	21.4
12H	21.4	21.9	21.9	22.3	22.6	20.1	20.6	20.5	21.0	21.3
8H 4H	21.2	21.7	21.6	22.0	22.4	20.3	20.8	20.7	21.1	21.5
6H	21.4	21.8	21.8	22.2	22.6	20.2	20.6	20.6	21.0	21.4
8H	21.4	21.7	21.8	22.2	22.6	20.1	20.5	20.6	20.9	21.4
12H	21.4	21.7	21.9	22.1	22.6	20.1	20.4	20.6	20.8	21.3
12H 4H	21.2	21.6	21.6	22.0	22.4	20.3	20.7	20.7	21.1	21.5
6H	21.3	21.7	21.8	22.1	22.5	20.2	20.5	20.6	20.9	21.4
8H	21.3	21.6	21.8	22.1	22.6	20.1	20.4	20.6	20.8	21.3
Variations with the observer position at spacings:										
S = 1.0H	+ 1.2 / - 1.5					+ 2.1 / - 3.2				
1.5H	+ 2.6 / - 1.5					+ 4.1 / - 3.0				
2.0H	+ 0.8 / - 0.7					+ 2.7 / - 1.6				

CIE Pub.117, 528.8 lm Total Lamp Luminous Flux Corrected (8log(F/F0) = -2.2)
Area: 0.001 m2

C Range: 0 - 360DEG
C Interval: 15.0DEG
Test Speed: HIGH
Temperature:25.3DEG
Operators:DAMIN
Test Date:2022-05-29

γ Range: 0 - 90DEG
γ Interval: 1.0DEG
Test System:EVERFINE GO-3000H_V1 SYSTEM V2.00.411
Humidity:65.0%
Test Distance:9.000m [K=1.0000]
Remarks:

UTILIZATION FACTORS TABLE

Test:U:11.786V I:0.6848A P:6.1325W PF:0.7599 Freq:60.00Hz Lamp Flux:528.794x1 lm		
NAME: 486712-MR16-7W-2700K-25°	TYPE:	WEIGHT:
SPEC.:	DIM.:	SERIAL No.:
MFR.:	SUR.:35mm	Shielding Angle:

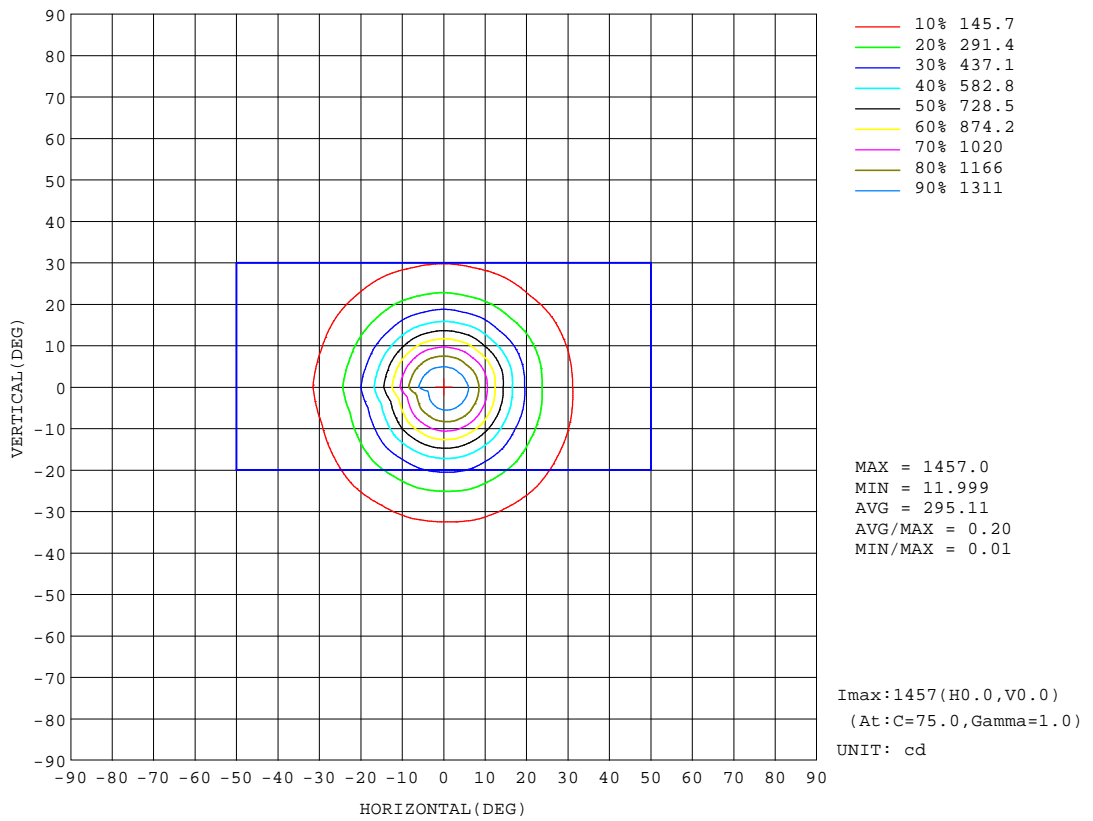
REFLECTANCE										
Ceiling	0.8	0.8	0.8	0.7	0.7	0.7	0.5	0.5	0.5	0
Walls	0.7	0.5	0.3	0.7	0.5	0.3	0.7	0.5	0.3	0
Working plane	0.2	0.2	0.2	0.2	0.2	0.2	0.2	0.2	0.2	0
ROOM INDEX	UTILIZATION FACTORS(PERCENT) $k(RI) \times RCR = 5$									
k = 0.60	87	80	76	86	80	76	85	80	76	72
0.80	94	88	84	93	88	84	92	87	84	80
1.00	99	93	89	98	92	89	96	92	88	84
1.25	103	97	94	102	97	93	100	96	93	88
1.50	105	101	97	104	100	97	102	98	95	91
2.00	108	104	101	107	103	100	104	101	98	93
2.50	110	106	103	108	105	102	105	102	100	94
3.00	112	108	105	110	107	104	106	104	102	96
4.00	114	111	109	112	109	107	108	106	104	97
5.00	115	113	111	113	111	109	109	107	106	98
ROOM INDEX	UF(total)									Direct
According to DIN EN 13032-2 2004			Suspended				SHRNOM = 1.25			

C Range: 0 - 360DEG
C Interval: 15.0DEG
Test Speed: HIGH
Temperature:25.3DEG
Operators:DAMIN
Test Date:2022-05-29

γ Range: 0 - 90DEG
 γ Interval: 1.0DEG
Test System:EVERFINE GO-3000H_V1 SYSTEM V2.00.411
Humidity:65.0%
Test Distance:9.000m [K=1.0000]
Remarks:

ISOCANDELA DIAGRAM

Test:U:11.786V I:0.6848A P:6.1325W PF:0.7599 Freq:60.00Hz Lamp Flux:528.794x1 lm		
NAME: 486712-MR16-7W-2700K-25°	TYPE:	WEIGHT:
SPEC.:	DIM.:	SERIAL No.:
MFR.:	SUR.:35mm	Shielding Angle:



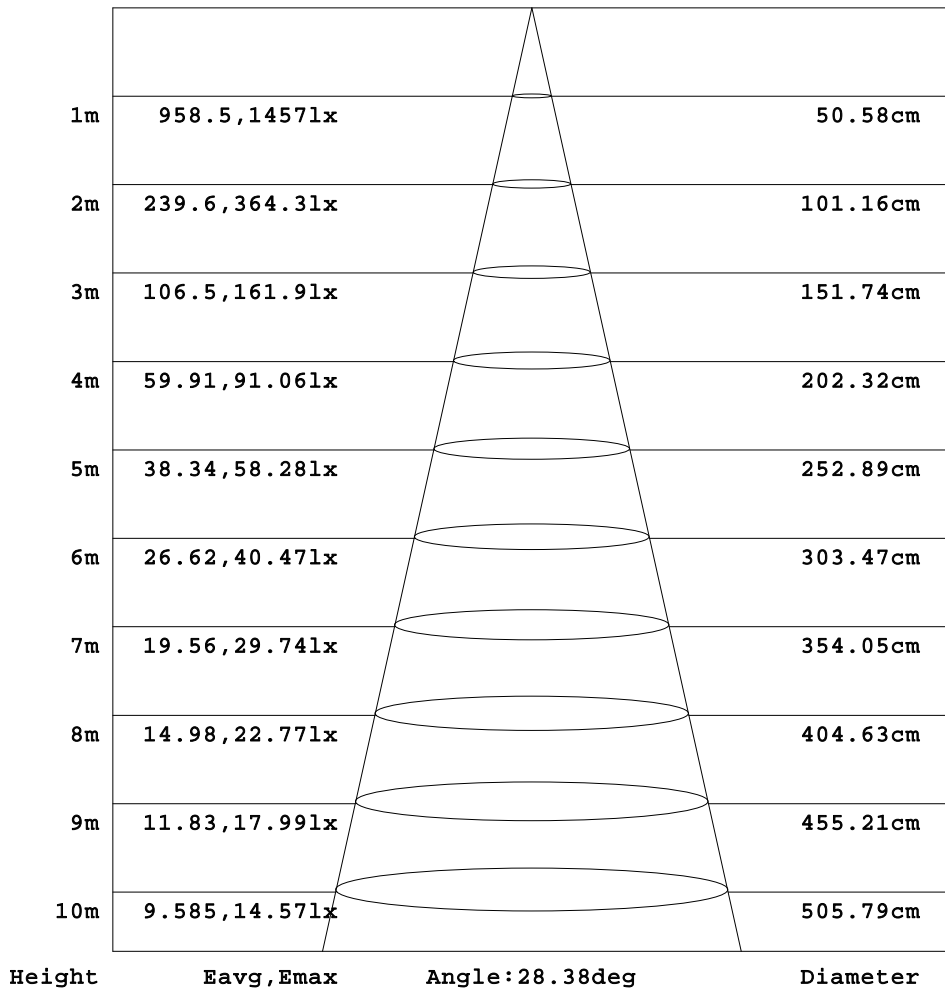
C Range: 0 - 360DEG
 C Interval: 15.0DEG
 Test Speed: HIGH
 Temperature:25.3DEG
 Operators:DAMIN
 Test Date:2022-05-29

γ Range: 0 - 90DEG
 γ Interval: 1.0DEG
 Test System:EVERFINE GO-3000H_V1 SYSTEM V2.00.411
 Humidity:65.0%
 Test Distance:9.000m [K=1.0000]
 Remarks:

AAI Figure

Test:U:11.786V I:0.6848A P:6.1325W PF:0.7599 Freq:60.00Hz Lamp Flux:528.794x1 lm		
NAME: 486712-MR16-7W-2700K-25°	TYPE:	WEIGHT:
SPEC.:	DIM.:	SERIAL No.:
MFR.:	SUR.:35mm	Shielding Angle:

Flux out:216.2 lm



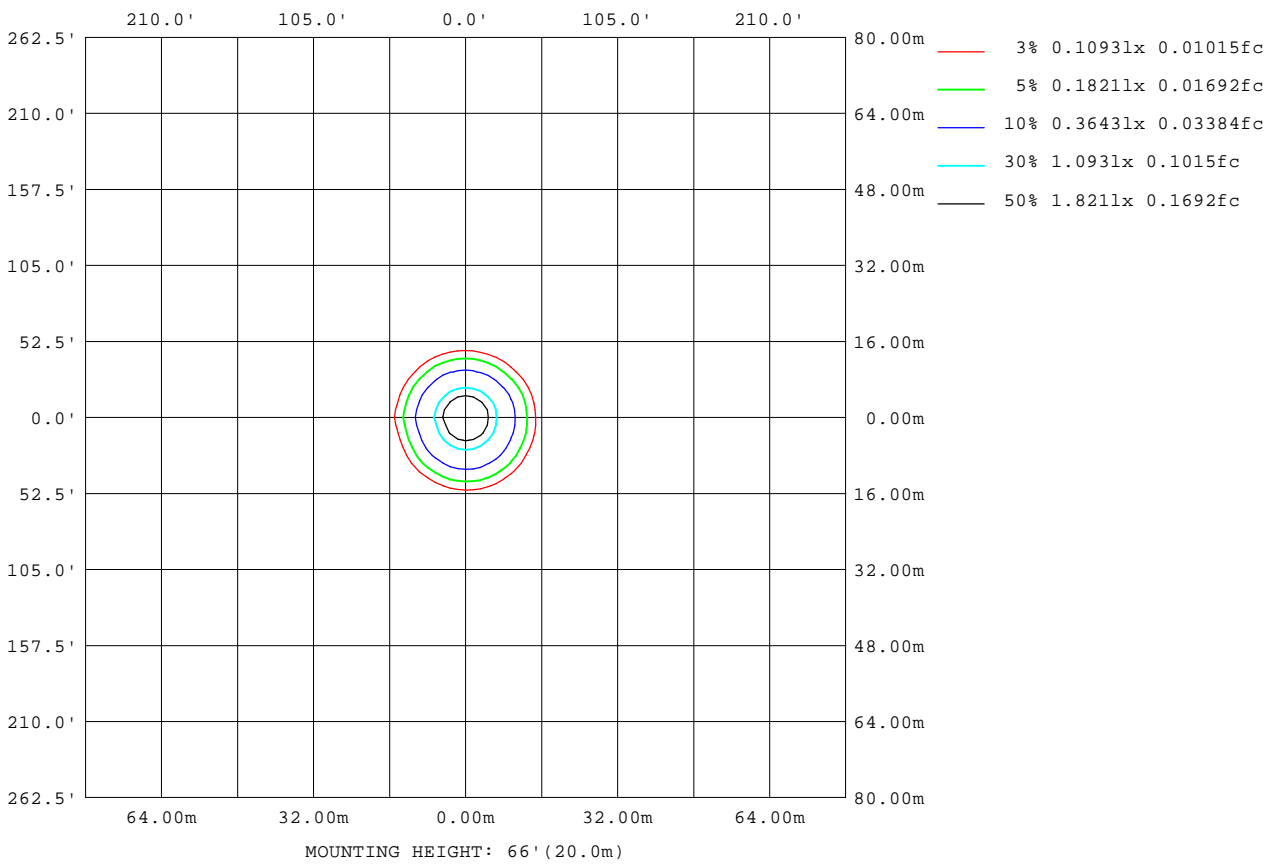
Note:The Curves indicate the illuminated area and the average illumination when the luminaire is at different distance.

C Range: 0 - 360DEG
C Interval: 15.0DEG
Test Speed: HIGH
Temperature:25.3DEG
Operators:DAMIN
Test Date:2022-05-29

γ Range: 0 - 90DEG
γ Interval: 1.0DEG
Test System:EVERFINE GO-3000H_V1 SYSTEM V2.00.411
Humidity:65.0%
Test Distance:9.000m [K=1.0000]
Remarks:

ISOLUX DIAGRAM

Test:U:11.786V I:0.6848A P:6.1325W PF:0.7599 Freq:60.00Hz Lamp Flux:528.794x1 lm		
NAME: 486712-MR16-7W-2700K-25°	TYPE:	WEIGHT:
SPEC.:	DIM.:	SERIAL No.:
MFR.:	SUR.:35mm	Shielding Angle:



C Range: 0 - 360DEG
C Interval: 15.0DEG
Test Speed: HIGH
Temperature:25.3DEG
Operators:DAMIN
Test Date:2022-05-29

γ Range: 0 - 90DEG
γ Interval: 1.0DEG
Test System:EVERFINE GO-3000H_V1 SYSTEM V2.00.411
Humidity:65.0%
Test Distance:9.000m [K=1.0000]
Remarks:

LED Avg.L Report

Test:U:11.786V I:0.6848A P:6.1325W PF:0.7599 Freq:60.00Hz Lamp Flux:528.794x1 lm		
NAME: 486712-MR16-7W-2700K-25°	TYPE:	WEIGHT:
SPEC.:	DIM.:	SERIAL No.:
MFR.:	SUR.:35mm	Shielding Angle:

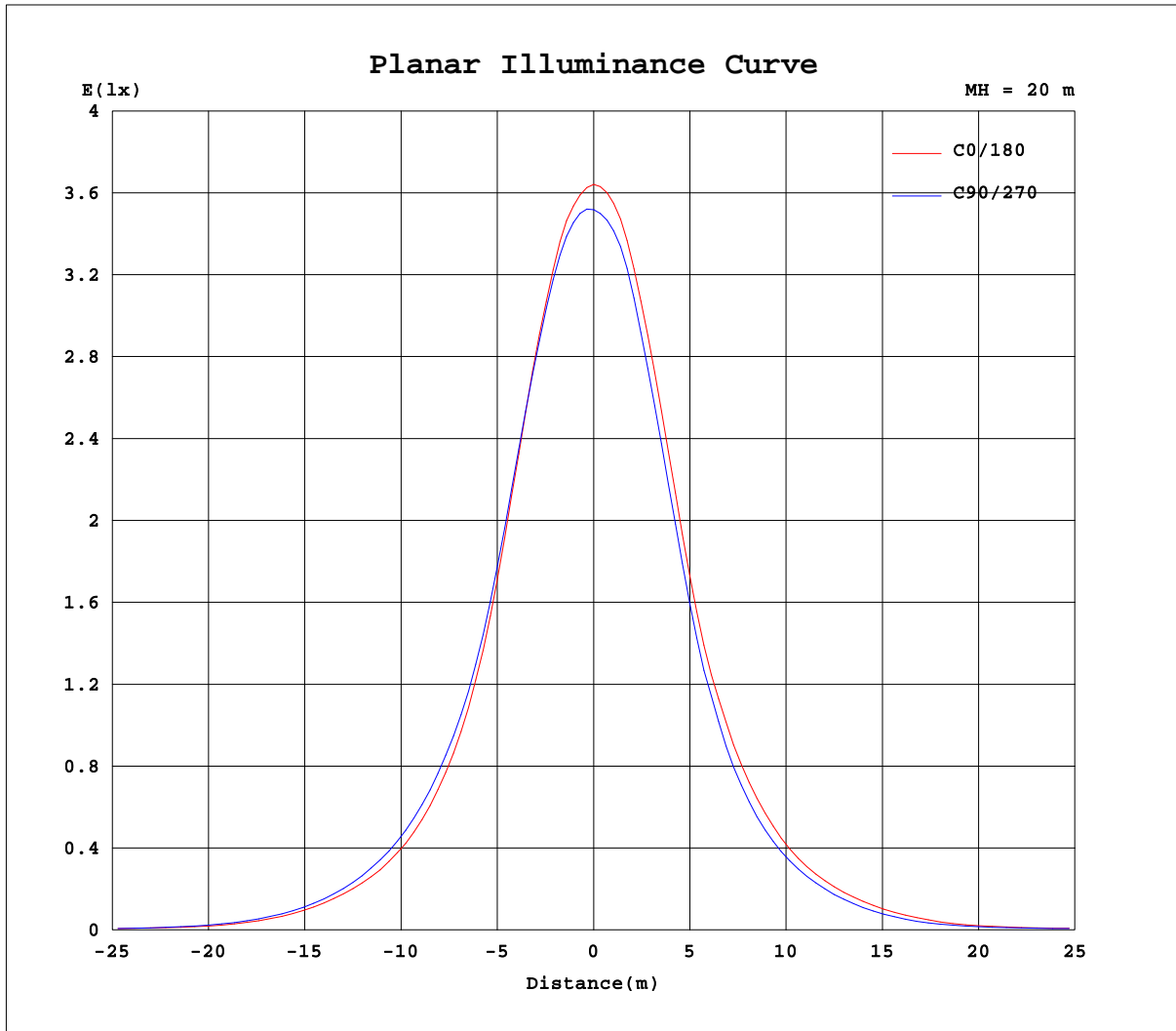
AvgL	cd/m2
L_0~180(65)av	22877
L_0~180(75)av	14953
L_0~180(85)av	8366
L_90~270(65)av	11110
L_90~270(75)av	3869
L_90~270(85)av	1
L_45(65)av	22089
L_45(75)av	7532
L_45(85)av	212

Standard: GB/T 29293-2012

C Range: 0 - 360DEG
C Interval: 15.0DEG
Test Speed: HIGH
Temperature:25.3DEG
Operators:DAMIN
Test Date:2022-05-29

γ Range: 0 - 90DEG
γ Interval: 1.0DEG
Test System:EVERFINE GO-3000H_V1 SYSTEM V2.00.411
Humidity:65.0%
Test Distance:9.000m [K=1.0000]
Remarks:

Planar Illuminance Curve



C Range: 0 - 360DEG
C Interval: 15.0DEG
Test Speed: HIGH
Temperature: 25.3DEG
Operators: DAMIN
Test Date: 2022-05-29

γ Range: 0 - 90DEG
 γ Interval: 1.0DEG
Test System: EVERFINE GO-3000H_V1 SYSTEM V2.00.411
Humidity: 65.0%
Test Distance: 9.000m [K=1.0000]
Remarks:

LUMINOUS DISTRIBUTION INTENSITY DATA

Test:U:11.786V I:0.6848A P:6.1325W PF:0.7599 Freq:60.00Hz Lamp Flux:528.794x1 lm		
NAME: 486712-MR16-7W-2700K-25°	TYPE:	WEIGHT:
SPEC.:	DIM.:	SERIAL No.:
MFR.:	SUR.:35mm	Shielding Angle:

Table--1

UNIT: cd

C(DEG) γ (DEG)	0	15	30	45	60	75	90	105	120	135	150	165	180	195	210	225	240	255	270
0	1414	1414	1414	1414	1414	1414	1414	1414	1414	1414	1414	1414	1414	1414	1414	1414	1414	1414	1414
5	1321	1326	1328	1332	1335	1344	1341	1337	1324	1319	1299	1289	1323	1317	1313	1309	1311	1312	1314
10	1029	1044	1049	1062	1067	1074	1068	1058	1037	1030	1000	978	1031	1015	1009	1000	1003	997	1000
15	662	679	688	701	708	719	717	711	695	687	652	628	670	652	645	636	639	633	637
20	405	420	426	448	452	469	460	458	443	444	420	405	424	401	395	386	391	382	386
25	250	261	268	285	290	302	296	295	282	282	268	255	265	249	245	238	238	233	234
30	156	164	170	180	184	190	189	187	176	176	165	158	164	154	152	146	146	141	143
35	94.4	101	103	110	112	117	112	112	107	107	97.4	93.3	99.4	91.9	90.5	85.6	85.9	81.2	81.0
40	48.8	53.4	54.3	58.9	59.7	62.8	60.4	60.4	56.6	57.0	50.2	47.9	53.1	49.1	48.2	44.0	43.5	40.4	39.2
45	23.1	24.1	26.1	26.8	26.9	27.8	28.4	27.9	26.2	25.0	23.5	22.2	24.6	24.0	23.1	22.3	20.5	20.3	19.6
50	13.7	13.5	14.5	14.4	13.9	13.7	14.6	15.2	14.5	14.5	14.8	14.5	15.1	14.6	14.8	14.4	13.9	13.4	13.3
55	11.9	11.5	12.2	11.9	11.1	10.9	11.5	12.1	12.1	12.6	13.2	13.0	12.9	12.7	12.9	12.5	12.0	11.5	11.4
60	10.6	10.4	11.1	10.9	10.0	7.19	6.99	7.54	10.9	11.4	12.1	11.8	11.6	11.3	11.4	11.0	10.4	6.39	5.86
65	9.19	9.06	9.47	9.22	6.14	5.28	5.02	5.37	6.45	9.95	10.4	10.13	10.1	9.80	9.53	9.11	5.43	4.59	4.37
70	6.87	6.81	7.11	5.26	3.50	2.60	2.31	2.65	3.71	5.08	7.38	7.00	7.52	7.24	7.02	4.77	3.18	2.43	2.29
75	3.70	3.75	3.49	1.90	1.39	1.17	1.04	1.07	1.36	1.87	3.32	3.46	4.04	3.86	3.23	1.62	1.24	1.03	0.96
80	2.00	1.89	0.89	0.39	0.06	0.07	0.07	0.06	0.04	0.25	0.81	1.71	2.24	1.99	0.78	0.23	0.03	0.04	0.04
85	0.70	0.36	0.02	0.02	0.01	0.00	0.00	0.00	0.01	0.01	0.01	0.12	0.76	0.17	0.02	0.01	0.00	0.00	0.00
90	0.00	0.00	0.00	0.00	0.00	0.00	0.00	0.00	0.00	0.00	0.00	0.00	0.01	0.01	0.01	0.00	0.00	0.00	0.00

C Range: 0 - 360DEG
 C Interval: 15.0DEG
 Test Speed: HIGH
 Temperature: 25.3DEG
 Operators: DAMIN
 Test Date: 2022-05-29

γ Range: 0 - 90DEG
 γ Interval: 1.0DEG
 Test System: EVERFINE GO-3000H_V1 SYSTEM V2.00.411
 Humidity: 65.0%
 Test Distance: 9.000m [K=1.0000]
 Remarks:

LUMINOUS DISTRIBUTION INTENSITY DATA

Test:U:11.786V I:0.6848A P:6.1325W PF:0.7599 Freq:60.00Hz Lamp Flux:528.794x1 lm		
NAME: 486712-MR16-7W-2700K-25°	TYPE:	WEIGHT:
SPEC.:	DIM.:	SERIAL No.:
MFR.:	SUR.:35mm	Shielding Angle:

Table--2

UNIT: cd

C(DEG) γ (DEG)	285	300	315	330	345												
0	1414	1414	1414	1414	1414												
5	1320	1330	1335	1353	1361												
10	1004	1022	1029	1063	1083												
15	640	660	667	697	716												
20	382	398	402	427	436												
25	231	240	241	262	269												
30	141	147	148	160	166												
35	79.6	85.3	87.3	95.3	99.3												
40	39.9	43.2	43.7	49.5	51.6												
45	20.9	20.8	21.8	23.2	25.3												
50	13.7	13.7	13.9	14.4	15.0												
55	11.5	11.9	12.1	12.4	12.6												
60	7.22	10.3	10.7	11.1	11.4												
65	4.72	5.83	9.06	9.51	9.77												
70	2.72	3.60	5.58	7.31	7.71												
75	1.06	1.33	2.41	3.85	4.08												
80	0.04	0.10	0.56	1.48	2.24												
85	0.01	0.01	0.03	0.04	0.75												
90	0.00	0.00	0.01	0.01	0.01												

C Range: 0 - 360DEG
C Interval: 15.0DEG
Test Speed: HIGH
Temperature:25.3DEG
Operators:DAMIN
Test Date:2022-05-29

γ Range: 0 - 90DEG
γ Interval: 1.0DEG
Test System:EVERFINE GO-3000H_V1 SYSTEM V2.00.411
Humidity:65.0%
Test Distance:9.000m [K=1.0000]
Remarks: