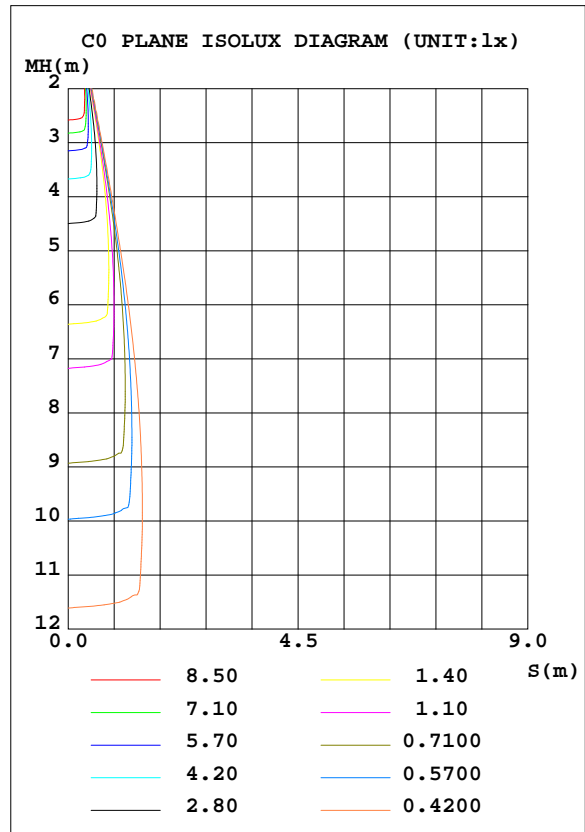
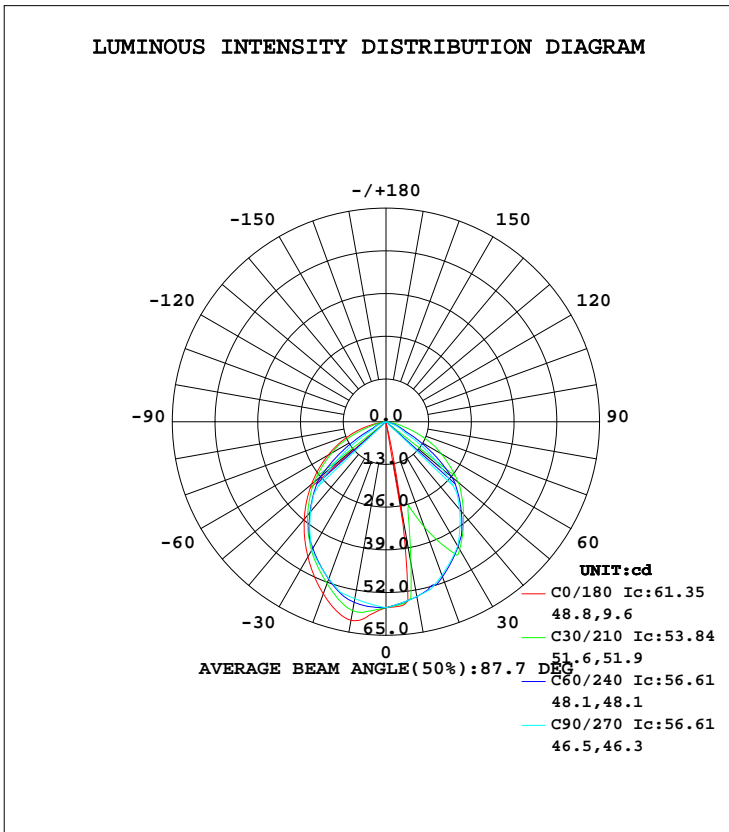


LUMINAIRE PHOTOMETRIC TEST REPORT

Test:U:11.96V I:0.2790A P:2.066W PF:0.6190 Lamp Flux:235x1 lm		
NAME: 489870-16-3000K-Frosted lens	TYPE:489870-16-3000K-Frosted lens	WEIGHT:
SPEC.:	DIM.:	SERIAL No.:
MFR.:	SUR.:	PROTECTION ANGLE:

DATA OF LAMP		PHOTOMETRIC DATA Eff: 67.75 lm/W			
489870-16-3000K-Frosted lens		Imax(cd)	61.35	S/MH(C0/180)	1.24
NOMINAL POWER(W)	2	LOR(%)	59.6	S/MH(C90/270)	1.19
RATED VOLTAGE(V)	12	TOTAL FLUX(lm)	113.17	η UP, DN(C0-180)	0.0,29.6
NOMINAL FLUX(lm)	190	CIE CLASS	DIRECT	η UP, DN(C180-360)	0.0,30.0
LAMPS INSIDE	1	η up(%)	0.0	CIBSE SHR NOM	0.50
TEST VOLTAGE(V)	12	η down(%)	59.6	CIBSE SHR MAX	0.70



C Range: 0 - 360DEG  
C Interval: 5.0DEG  
Test Speed: HIGH  
Temperature:20DEG  
Operators:Y  
Test Date:2024-01-29

γ Range: 0 - 90DEG  
γ Interval: 0.5DEG  
Test System:EVERFINE GO-2000B\_V1 SYSTEM V2.0.291  
Humidity:65.0%  
Test Distance:8.750m [K=1.0000]  
Remarks:

ZONAL FLUX DIAGRAM

ZONAL FLUX DIAGRAM:

γ	C0	C45	C90	C135	C180	C225	C270	C315	γ	Φ zone	Φ total	lum, lamp
5	56.20	55.46	55.32	56.88	59.11	57.12	55.65	55.70	0- 5	1.350	1.350	1.19,0.71
10	26.65	53.37	54.02	56.57	61.35	57.03	54.68	53.68	5- 10	3.923	5.273	4.66,2.78
15	0.0000	42.96	52.72	54.13	59.30	54.81	53.71	38.95	10- 15	5.637	10.91	9.64,5.74
20	0	48.70	49.70	50.64	55.77	51.51	50.84	49.25	15- 20	7.378	18.29	16.2,9.63
25	0	47.57	46.69	47.18	51.76	48.13	47.97	48.68	20- 25	9.210	27.50	24.3,14.5
30	0	44.10	43.68	43.57	47.47	44.56	45.09	45.30	25- 30	10.65	38.15	33.7,20.1
35	0	40.53	39.25	39.86	43.16	40.87	40.39	41.80	30- 35	11.63	49.78	44,26.2
40	0	36.75	34.82	35.94	38.70	36.93	35.68	38.05	35- 40	11.99	61.76	54.6,32.5
45	0	32.03	30.39	31.36	34.17	32.04	30.97	33.37	40- 45	11.73	73.49	64.9,38.7
50	0	27.40	22.43	26.89	29.59	27.28	22.17	28.74	45- 50	10.84	84.33	74.5,44.4
55	0	22.79	14.48	22.49	24.97	22.55	13.38	24.13	50- 55	9.273	93.60	82.7,49.3
60	0	16.33	6.521	16.78	20.37	15.37	4.575	17.41	55- 60	7.292	100.9	89.2,53.1
65	0	10.24	4.514	11.50	15.81	8.581	3.287	11.20	60- 65	5.238	106.1	93.8,55.9
70	0	5.763	2.508	7.165	11.34	4.119	1.999	6.606	65- 70	3.648	109.8	97,57.8
75	0	2.903	0.5011	3.543	6.763	2.185	0.7104	3.408	70- 75	2.218	112.0	99,58.9
80	0	0.2850	0	0.2951	1.984	0.3489	0	0.3890	75- 80	0.9849	113.0	99.8,59.5
85	0	0	0	0	0.0212	0	0	0	80- 85	0.1867	113.2	100,59.6
90	0	0	0	0	0	0	0	0	85- 90	0.0032	113.2	100,59.6
95									90- 95			
100									95-100			
105									100-105			
110									105-110			
115									110-115			
120									115-120			
125									120-125			
130									125-130			
135									130-135			
140									135-140			
145									140-145			
150									145-150			
155									150-155			
160									155-160			
165									160-165			
170									165-170			
175									170-175			
180									175-180			
DEG	LUMINOUS INTENSITY:cd								UNIT:lm			

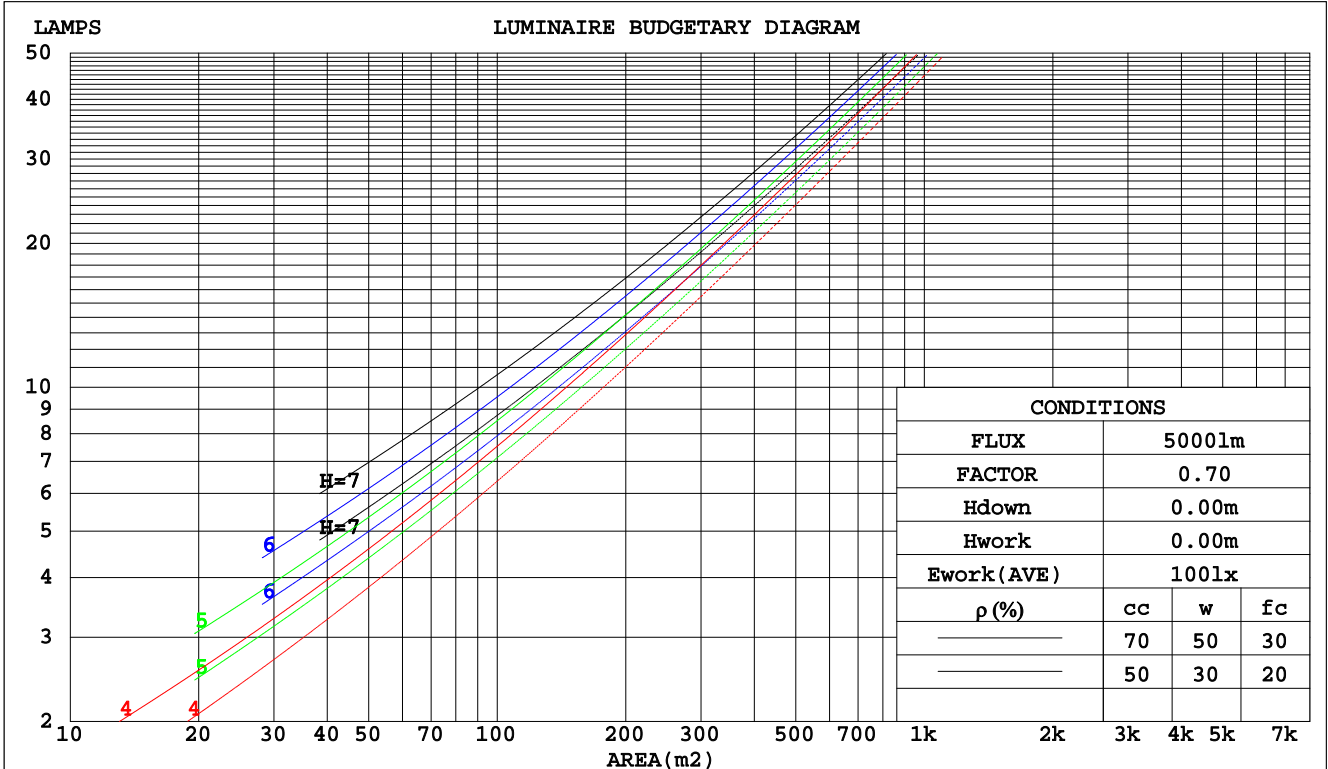
C Range: 0 - 360DEG  
C Interval: 5.0DEG  
Test Speed: HIGH  
Temperature:20DEG  
Operators:Y  
Test Date:2024-01-29

γ Range: 0 - 90DEG  
γ Interval: 0.5DEG  
Test System:EVERFINE GO-2000B\_V1 SYSTEM V2.0.291  
Humidity:65.0%  
Test Distance:8.750m [K=1.0000]  
Remarks:

**CU AND LUMINAIRE BUDGETARY ESTIMATE DIAGRAM**

Test:U:11.96V I:0.2790A P:2.066W PF:0.6190 Lamp Flux:235x1 lm		
NAME: 489870-16-3000K-Frosted lens	TYPE:489870-16-3000K-Frosted	WEIGHT:
SPEC.:	DIM.:	SERIAL No.:
MFR.:	SUR.:	PROTECTION ANGLE:

pcc	80%			70%			50%			30%			10%			0
	50%	30%	10%	50%	30%	10%	50%	30%	10%	50%	30%	10%	50%	30%	10%	0
pw																0
pfc	20%			20%			20%			20%			20%			0
RCR	RCR:Room Cavity Ratio						Coefficients of Utilization(CU)									
0.0	.71	.71	.71	.69	.69	.69	.66	.66	.66	.63	.63	.63	.61	.61	.61	.60
1.0	.64	.61	.60	.62	.60	.59	.60	.58	.57	.57	.56	.55	.55	.54	.53	.52
2.0	.56	.53	.50	.55	.52	.49	.53	.51	.48	.51	.49	.47	.50	.48	.46	.45
3.0	.50	.46	.43	.49	.45	.42	.48	.44	.42	.46	.43	.41	.45	.42	.40	.39
4.0	.45	.40	.37	.44	.40	.37	.43	.39	.36	.42	.38	.36	.40	.37	.35	.34
5.0	.41	.36	.32	.40	.35	.32	.39	.35	.32	.38	.34	.31	.37	.33	.31	.30
6.0	.37	.32	.28	.36	.32	.28	.35	.31	.28	.34	.31	.28	.33	.30	.28	.26
7.0	.34	.29	.25	.33	.28	.25	.32	.28	.25	.31	.28	.25	.31	.27	.25	.24
8.0	.31	.26	.23	.30	.26	.23	.30	.25	.23	.29	.25	.22	.28	.25	.22	.21
9.0	.28	.24	.21	.28	.24	.21	.27	.23	.20	.27	.23	.20	.26	.23	.20	.19
10.0	.26	.22	.19	.26	.22	.19	.25	.21	.19	.25	.21	.19	.24	.21	.18	.17



C Range: 0 - 360DEG  
 C Interval: 5.0DEG  
 Test Speed: HIGH  
 Temperature:20DEG  
 Operators:Y  
 Test Date:2024-01-29

γ Range: 0 - 90DEG  
 γ Interval: 0.5DEG  
 Test System:EVERFINE GO-2000B\_V1 SYSTEM V2.0.291  
 Humidity:65.0%  
 Test Distance:8.750m [K=1.0000]  
 Remarks:

**WEC AND CCEC**

Test:U:11.96V I:0.2790A P:2.066W PF:0.6190 Lamp Flux:235x1 lm		
NAME: 489870-16-3000K-Frosted lens	TYPE:489870-16-3000K-Frosted	WEIGHT:
SPEC.:	DIM.:	SERIAL No.:
MFR.:	SUR.:	PROTECTION ANGLE:

ρcc	80%			70%			50%			30%			10%			0
ρw	50%	30%	10%	50%	30%	10%	50%	30%	10%	50%	30%	10%	50%	30%	10%	0
ρfc	20%			20%			20%			20%			20%			0
RCR	RCR:Room Cavity Ratio						Wall Exitance Coefficients(WEC)									
0.0																
1.0	.152	.087	.027	.148	.084	.027	.140	.080	.026	.133	.077	.025	.127	.073	.024	
2.0	.149	.081	.025	.145	.080	.025	.138	.077	.024	.132	.074	.023	.126	.071	.023	
3.0	.141	.075	.022	.138	.074	.022	.132	.072	.022	.127	.069	.021	.121	.067	.021	
4.0	.133	.069	.020	.130	.068	.020	.125	.066	.020	.120	.064	.019	.115	.063	.019	
5.0	.125	.063	.018	.122	.063	.018	.117	.061	.018	.113	.060	.018	.109	.058	.018	
6.0	.117	.059	.017	.115	.058	.017	.111	.057	.016	.107	.055	.016	.103	.054	.016	
7.0	.110	.054	.015	.108	.054	.015	.104	.053	.015	.101	.052	.015	.098	.051	.015	
8.0	.103	.051	.014	.102	.050	.014	.098	.049	.014	.095	.048	.014	.092	.047	.014	
9.0	.098	.047	.013	.096	.047	.013	.093	.046	.013	.090	.045	.013	.088	.044	.013	
10.0	.092	.044	.012	.091	.044	.012	.088	.043	.012	.086	.043	.012	.083	.042	.012	

ρcc	80%			70%			50%			30%			10%			0
ρw	50%	30%	10%	50%	30%	10%	50%	30%	10%	50%	30%	10%	50%	30%	10%	0
ρfc	20%			20%			20%			20%			20%			0
RCR	RCR:Room Cavity Ratio						Ceiling Cavity Exitance Coefficients(CCEC)									
0.0	.113	.113	.113	.097	.097	.097	.066	.066	.066	.038	.038	.038	.012	.012	.012	
1.0	.105	.093	.083	.090	.080	.071	.062	.055	.049	.035	.032	.029	.011	.010	.009	
2.0	.099	.079	.061	.085	.068	.053	.058	.047	.037	.034	.027	.022	.011	.009	.007	
3.0	.094	.068	.047	.081	.059	.041	.055	.041	.029	.032	.024	.017	.010	.008	.006	
4.0	.090	.060	.037	.077	.052	.032	.053	.036	.023	.031	.021	.013	.010	.007	.004	
5.0	.085	.053	.030	.073	.046	.026	.050	.032	.018	.029	.019	.011	.009	.006	.004	
6.0	.081	.048	.025	.070	.042	.022	.048	.029	.015	.028	.017	.009	.009	.006	.003	
7.0	.077	.044	.021	.067	.038	.018	.046	.027	.013	.027	.016	.008	.009	.005	.003	
8.0	.074	.041	.018	.064	.035	.016	.044	.025	.011	.026	.015	.007	.008	.005	.002	
9.0	.071	.038	.016	.061	.033	.014	.042	.023	.010	.025	.014	.006	.008	.004	.002	
10.0	.067	.035	.014	.058	.031	.012	.040	.022	.009	.023	.013	.005	.008	.004	.002	

C Range: 0 - 360DEG  
C Interval: 5.0DEG  
Test Speed: HIGH  
Temperature:20DEG  
Operators:Y  
Test Date:2024-01-29

γ Range: 0 - 90DEG  
γ Interval: 0.5DEG  
Test System:EVERFINE GO-2000B\_V1 SYSTEM V2.0.291  
Humidity:65.0%  
Test Distance:8.750m [K=1.0000]  
Remarks:

**UGR(Unified Glare Rating) Table**

Test:U:11.96V I:0.2790A P:2.066W PF:0.6190 Lamp Flux:235x1 lm										
NAME: 489870-16-3000K-Frosted lens					TYPE:489870-16-3000K-Frosted lens					
SPEC.:					DIM.:			SERIAL No.:		
MFR.:					SUR.:			PROTECTION ANGLE:		
ceiling/cavity	0.7	0.7	0.5	0.5	0.3	0.7	0.7	0.5	0.5	0.3
walls	0.5	0.3	0.5	0.3	0.3	0.5	0.3	0.5	0.3	0.3
working plane	0.2	0.2	0.2	0.2	0.2	0.2	0.2	0.2	0.2	0.2
Room dimensions	Viewed crosswise					Viewed endwise				
x = 2H y = 2H	6.1	7.5	6.4	7.7	7.9	5.5	6.9	5.7	7.1	7.3
3H	6.5	7.8	6.8	8.0	8.2	5.5	6.8	5.8	7.0	7.3
4H	6.5	7.7	6.8	8.0	8.2	5.5	6.7	5.8	6.9	7.2
6H	6.4	7.6	6.8	7.8	8.1	5.4	6.5	5.7	6.7	7.0
8H	6.4	7.5	6.7	7.7	8.0	5.3	6.4	5.6	6.7	6.9
12H	6.3	7.4	6.7	7.7	8.0	5.3	6.3	5.6	6.6	6.9
4H 2H	6.7	7.9	7.0	8.1	8.4	6.1	7.3	6.4	7.5	7.8
3H	7.4	8.5	7.8	8.8	9.1	6.2	7.3	6.6	7.5	7.8
4H	7.6	8.6	8.0	8.9	9.2	6.2	7.1	6.5	7.4	7.7
6H	7.7	8.5	8.1	8.9	9.2	6.1	6.9	6.5	7.2	7.6
8H	7.7	8.5	8.1	8.8	9.2	6.0	6.8	6.4	7.1	7.5
12H	7.6	8.3	8.1	8.7	9.1	6.0	6.7	6.4	7.1	7.5
8H 4H	7.6	8.4	8.0	8.7	9.1	6.3	7.0	6.7	7.4	7.8
6H	7.8	8.4	8.2	8.8	9.3	6.2	6.8	6.6	7.2	7.6
8H	7.8	8.4	8.3	8.8	9.2	6.1	6.7	6.6	7.1	7.6
12H	7.8	8.3	8.3	8.7	9.2	6.1	6.6	6.6	7.0	7.5
12H 4H	7.6	8.3	8.0	8.7	9.1	6.3	7.0	6.7	7.3	7.7
6H	7.8	8.3	8.2	8.7	9.2	6.2	6.7	6.6	7.1	7.6
8H	7.8	8.2	8.3	8.7	9.2	6.1	6.6	6.6	7.0	7.5
Variations with the observer position at spacings:										
S = 1.0H	+ 0.9 / - 0.9					+ 0.7 / - 0.9				
1.5H	+ 1.3 / - 2.6					+ 0.5 / - 0.6				
2.0H	+ 1.7 / - 4.8					+ 1.8 / - 3.6				

CIE Pub.117 Corrected 190.0 lm Total Lamp Luminous Flux. (8log(F/F0) = -5.8)

C Range: 0 - 360DEG  
C Interval: 5.0DEG  
Test Speed: HIGH  
Temperature:20DEG  
Operators:Y  
Test Date:2024-01-29

γ Range: 0 - 90DEG  
γ Interval: 0.5DEG  
Test System:EVERFINE GO-2000B\_V1 SYSTEM V2.0.291  
Humidity:65.0%  
Test Distance:8.750m [K=1.0000]  
Remarks:

**UTILIZATION FACTORS TABLE**

Test:U:11.96V I:0.2790A P:2.066W PF:0.6190 Lamp Flux:235x1 lm		
NAME: 489870-16-3000K-Frosted lens	TYPE:489870-16-3000K-Frosted	WEIGHT:
SPEC.:	DIM.:	SERIAL No.:
MFR.:	SUR.:	PROTECTION ANGLE:

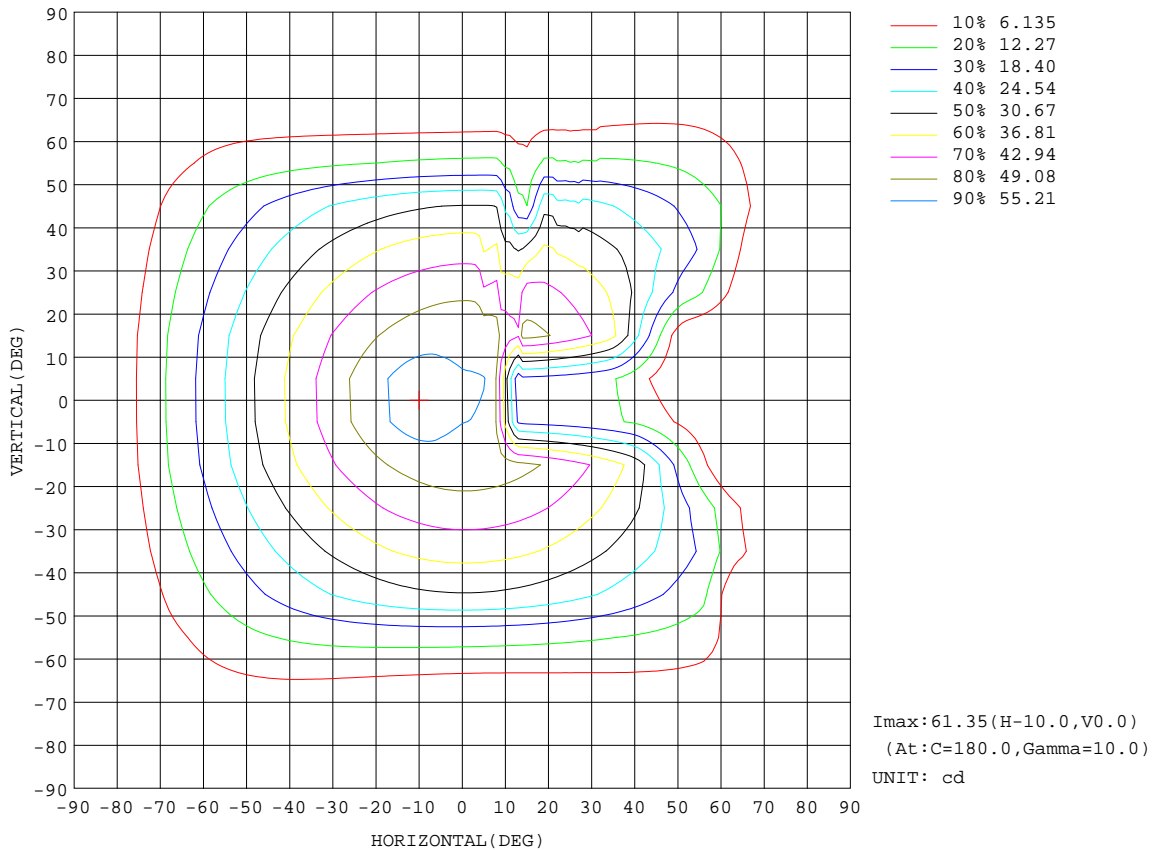
REFLECTANCE										
Ceiling	0.8	0.8	0.8	0.7	0.7	0.7	0.5	0.5	0.5	0
Walls	0.7	0.5	0.3	0.7	0.5	0.3	0.7	0.5	0.3	0
Working plane	0.2	0.2	0.2	0.2	0.2	0.2	0.2	0.2	0.2	0
ROOM INDEX	UTILIZATION FACTORS(PERCENT) $k(RI) \times RCR = 5$									
k = 0.60	37	31	27	37	31	27	36	31	27	24
0.80	44	37	33	43	37	33	42	37	33	29
1.00	49	43	39	48	43	39	47	43	39	35
1.25	53	47	44	52	47	44	51	46	43	39
1.50	56	51	47	55	50	47	53	49	46	42
2.00	59	55	52	58	54	51	56	53	50	46
2.50	61	57	54	60	56	54	58	55	53	48
3.00	63	59	57	62	59	56	59	57	55	50
4.00	65	62	60	63	61	59	61	59	57	52
5.00	66	64	62	65	62	61	62	60	59	54
ROOM INDEX	UF(total)									Direct
According to DIN EN 13032-2 2004			Suspended				SHRNOM = 1.25			

C Range: 0 - 360DEG  
 C Interval: 5.0DEG  
 Test Speed: HIGH  
 Temperature:20DEG  
 Operators:Y  
 Test Date:2024-01-29

$\gamma$  Range: 0 - 90DEG  
 $\gamma$  Interval: 0.5DEG  
 Test System:EVERFINE GO-2000B\_V1 SYSTEM V2.0.291  
 Humidity:65.0%  
 Test Distance:8.750m [K=1.0000]  
 Remarks:

**ISOCANDELA DIAGRAM**

Test:U:11.96V I:0.2790A P:2.066W PF:0.6190 Lamp Flux:235x1 lm		
NAME: 489870-16-3000K-Frosted lens	TYPE:489870-16-3000K-Frosted	WEIGHT:
SPEC.:	DIM.:	SERIAL No.:
MFR.:	SUR.:	PROTECTION ANGLE:

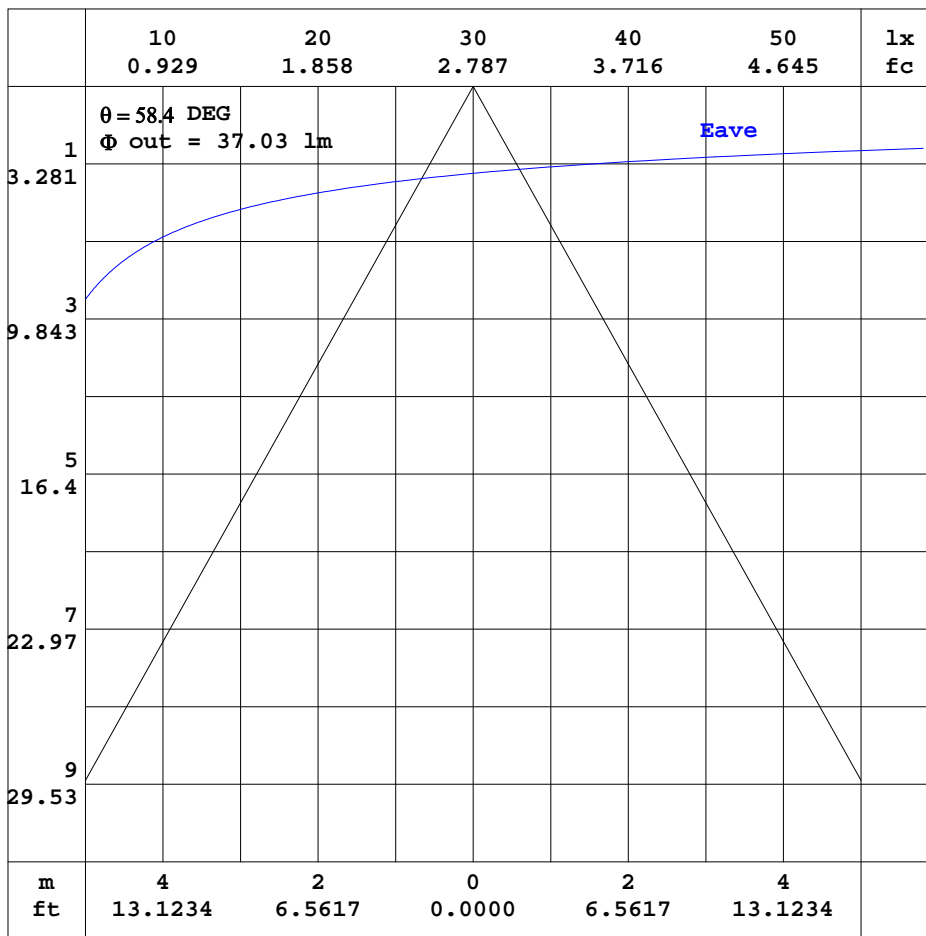


C Range: 0 - 360DEG  
C Interval: 5.0DEG  
Test Speed: HIGH  
Temperature:20DEG  
Operators:Y  
Test Date:2024-01-29

γ Range: 0 - 90DEG  
γ Interval: 0.5DEG  
Test System:EVERFINE GO-2000B\_V1 SYSTEM V2.0.291  
Humidity:65.0%  
Test Distance:8.750m [K=1.0000]  
Remarks:

**AAI CURVES**

Test:U:11.96V I:0.2790A P:2.066W PF:0.6190 Lamp Flux:235x1 lm		
NAME: 489870-16-3000K-Frosted lens	TYPE:489870-16-3000K-Frosted	WEIGHT:
SPEC.:	DIM.:	SERIAL No.:
MFR.:	SUR.:	PROTECTION ANGLE:



Note:The Curves indicate the illuminated area and the average illumination when the luminaire is at different distance.

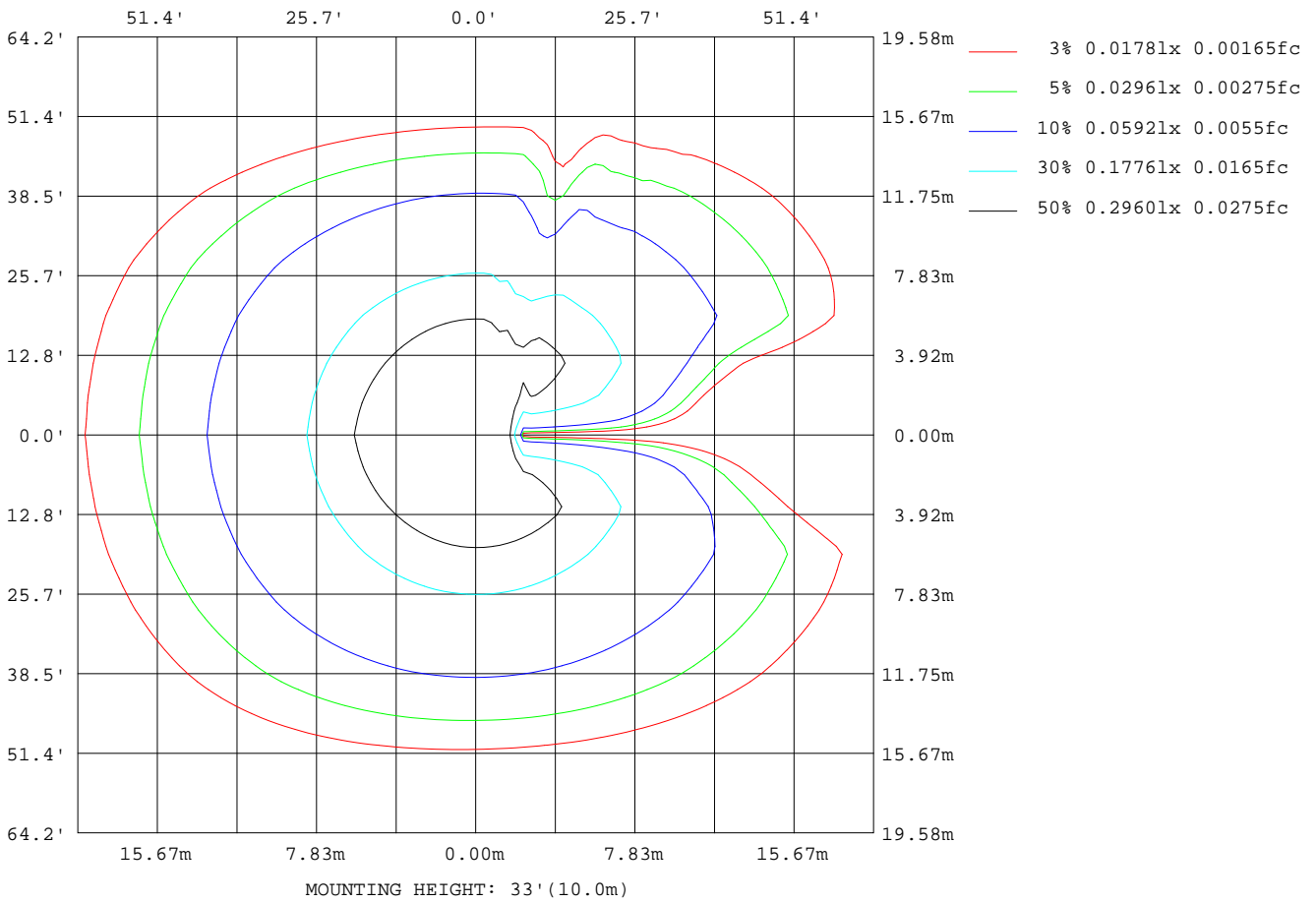
C Range: 0 - 360DEG  
C Interval: 5.0DEG  
Test Speed: HIGH  
Temperature:20DEG  
Operators:Y  
Test Date:2024-01-29

$\gamma$  Range: 0 - 90DEG  
 $\gamma$  Interval: 0.5DEG  
Test System:EVERFINE GO-2000B\_V1 SYSTEM V2.0.291  
Humidity:65.0%  
Test Distance:8.750m [K=1.0000]  
Remarks:



**ISOLUX DIAGRAM**

Test:U:11.96V I:0.2790A P:2.066W PF:0.6190 Lamp Flux:235x1 lm		
NAME: 489870-16-3000K-Frosted lens	TYPE:489870-16-3000K-Frosted	WEIGHT:
SPEC.:	DIM.:	SERIAL No.:
MFR.:	SUR.:	PROTECTION ANGLE:



C Range: 0 - 360DEG  
 C Interval: 5.0DEG  
 Test Speed: HIGH  
 Temperature:20DEG  
 Operators:Y  
 Test Date:2024-01-29

γ Range: 0 - 90DEG  
 γ Interval: 0.5DEG  
 Test System:EVERFINE GO-2000B\_V1 SYSTEM V2.0.291  
 Humidity:65.0%  
 Test Distance:8.750m [K=1.0000]  
 Remarks:

**LED Avg.L Report**

Test:U:11.96V I:0.2790A P:2.066W PF:0.6190 Lamp Flux:235x1 lm		
NAME: 489870-16-3000K-Frosted lens	TYPE:489870-16-3000K-Frosted lens	WEIGHT:
SPEC.:	DIM.:	SERIAL No.:
MFR.:	SUR.:	PROTECTION ANGLE:

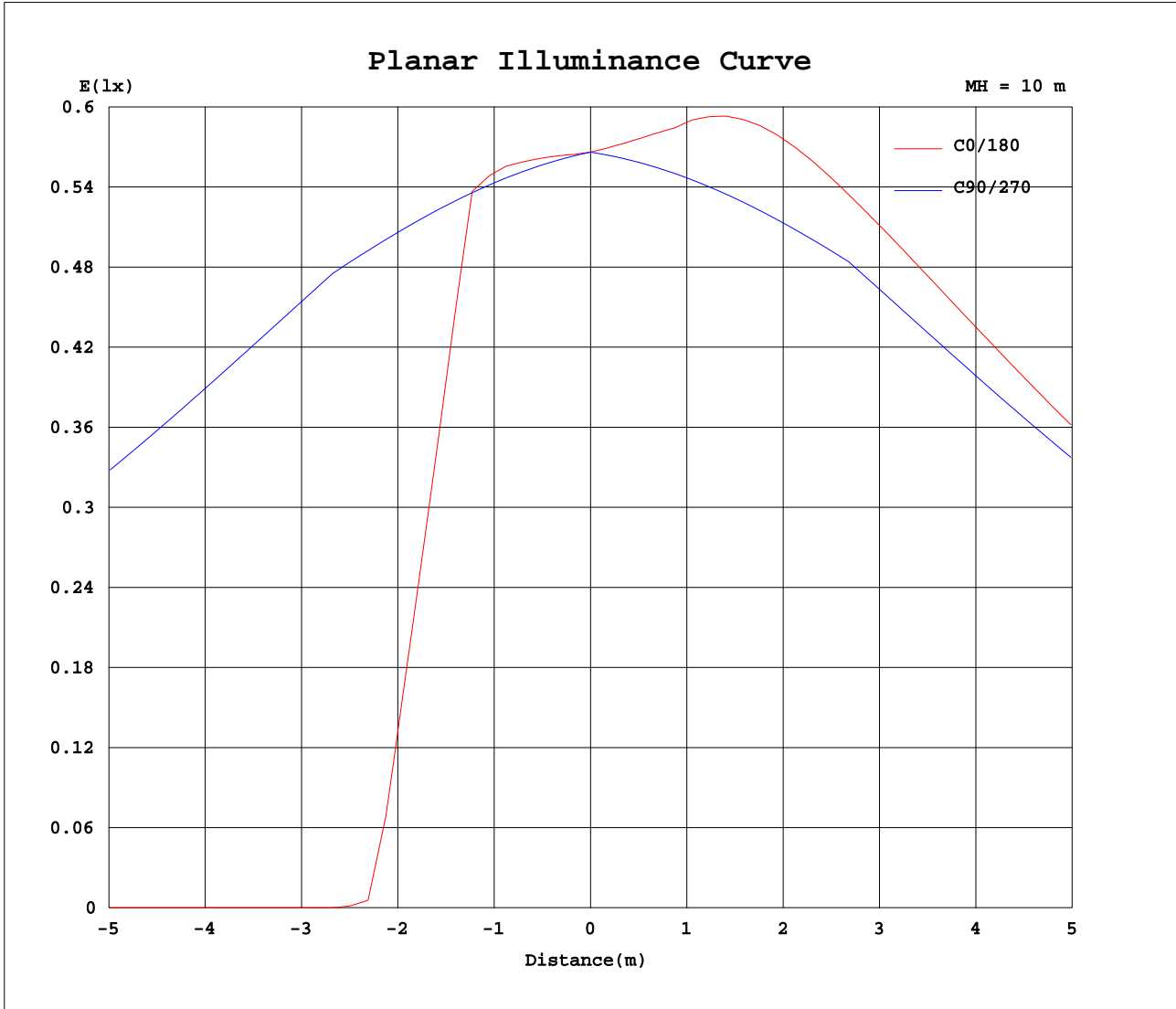
AvgL	cd/m2
L_0~180(65)av	94
L_0~180(75)av	65
L_0~180(85)av	1
L_90~270(65)av	46
L_90~270(75)av	12
L_90~270(85)av	0
L_45(65)av	123
L_45(75)av	58
L_45(85)av	0

Standard: GB/T 29293-2012

C Range: 0 - 360DEG  
C Interval: 5.0DEG  
Test Speed: HIGH  
Temperature:20DEG  
Operators:Y  
Test Date:2024-01-29

γ Range: 0 - 90DEG  
γ Interval: 0.5DEG  
Test System:EVERFINE GO-2000B\_V1 SYSTEM V2.0.291  
Humidity:65.0%  
Test Distance:8.750m [K=1.0000]  
Remarks:

Planar Illuminance Curve



C Range: 0 - 360DEG  
 C Interval: 5.0DEG  
 Test Speed: HIGH  
 Temperature: 20DEG  
 Operators: Y  
 Test Date: 2024-01-29

γ Range: 0 - 90DEG  
 γ Interval: 0.5DEG  
 Test System: EVERFINE GO-2000B\_V1 SYSTEM V2.0.291  
 Humidity: 65.0%  
 Test Distance: 8.750m [K=1.0000]  
 Remarks:

LUMINOUS DISTRIBUTION INTENSITY DATA

Test:U:11.96V I:0.2790A P:2.066W PF:0.6190 Lamp Flux:235x1 lm		
NAME: 489870-16-3000K-Frosted lens	TYPE:489870-16-3000K-Frosted	WEIGHT:
SPEC.:	DIM.:	SERIAL No.:
MFR.:	SUR.:	PROTECTION ANGLE:

Table--1

UNIT: cd

C(DEG) γ (DEG)	0	5	10	15	20	25	30	35	40	45	50	55	60	65	70	75	80	85	90
0	56.6	56.6	56.6	56.6	56.6	56.6	56.6	56.6	56.6	56.6	56.6	56.6	56.6	56.6	56.6	56.6	56.6	56.6	56.6
5	56.2	56.1	56.0	55.9	55.8	55.7	55.6	55.6	55.5	55.5	55.4	55.4	55.3	55.3	55.3	55.3	55.3	55.3	55.3
10	26.6	28.5	30.9	33.7	36.9	40.3	43.8	47.2	50.4	53.4	53.8	54.0	54.0	54.0	54.0	54.0	54.0	54.0	54.0
15	0.00	4.49	8.97	13.4	17.7	22.1	26.4	32.1	37.9	43.0	47.0	50.0	52.0	52.6	52.7	52.7	52.7	52.7	52.7
20	0.00	5.85	11.7	17.4	23.1	28.6	34.0	39.1	44.0	48.7	50.6	50.4	50.2	50.1	49.9	49.9	49.8	49.7	49.7
25	0.00	7.11	14.2	21.2	28.2	35.0	41.6	48.1	47.8	47.6	47.4	47.2	47.1	47.0	46.9	46.8	46.8	46.7	46.7
30	0.00	8.21	16.4	24.6	32.7	40.8	44.8	44.5	44.3	44.1	44.0	43.9	43.8	43.8	43.8	43.8	43.7	43.7	43.7
35	0.00	9.10	18.2	27.4	36.6	41.1	40.8	40.7	40.6	40.5	40.5	40.5	40.2	40.0	39.7	39.5	39.4	39.3	39.2
40	0.00	9.63	19.4	29.5	36.8	36.7	36.7	36.8	36.8	36.8	36.3	36.0	35.7	35.4	35.2	35.1	34.9	34.9	34.8
45	0.00	8.70	18.0	28.3	31.2	32.3	32.7	33.0	32.5	32.0	31.7	31.3	31.1	30.9	30.7	30.6	30.5	30.4	30.4
50	0.00	6.83	14.5	21.4	25.0	27.6	28.7	28.2	27.8	27.4	27.1	26.8	26.0	25.0	24.1	23.4	22.8	22.5	22.4
55	0.00	4.37	9.92	16.1	21.3	24.3	23.9	23.6	23.2	22.8	21.4	20.0	18.7	17.5	16.4	15.5	14.9	14.5	14.5
60	0.00	1.40	5.26	13.5	19.8	19.6	19.4	19.1	17.8	16.3	14.7	13.1	11.5	10.0	8.75	7.71	6.97	6.56	6.52
65	0.00	0.04	3.96	12.5	13.6	15.2	14.8	13.5	12.0	10.2	8.35	6.65	5.97	5.43	5.03	4.73	4.55	4.47	4.51
70	0.00	0.00	3.87	6.38	4.45	8.34	9.69	8.31	6.71	5.76	4.96	4.26	3.70	3.28	2.96	2.72	2.57	2.49	2.51
75	0.00	0.03	1.74	4.61	3.38	5.03	5.31	4.48	3.65	2.90	2.28	1.77	1.38	1.08	0.87	0.70	0.59	0.52	0.50
80	0.00	0.00	0.66	2.39	2.72	2.37	1.82	1.11	0.45	0.29	0.24	0.18	0.14	0.10	0.06	0.03	0.02	0.00	0.00
85	0.00	0.00	0.18	0.36	0.03	0.04	0.00	0.00	0.00	0.00	0.00	0.00	0.00	0.00	0.00	0.00	0.00	0.00	0.00
90	0.00	0.00	0.00	0.00	0.00	0.00	0.00	0.00	0.00	0.00	0.00	0.00	0.00	0.00	0.00	0.00	0.00	0.00	0.00

C Range: 0 - 360DEG  
C Interval: 5.0DEG  
Test Speed: HIGH  
Temperature:20DEG  
Operators:Y  
Test Date:2024-01-29

γ Range: 0 - 90DEG  
γ Interval: 0.5DEG  
Test System:EVERFINE GO-2000B\_V1 SYSTEM V2.0.291  
Humidity:65.0%  
Test Distance:8.750m [K=1.0000]  
Remarks:





