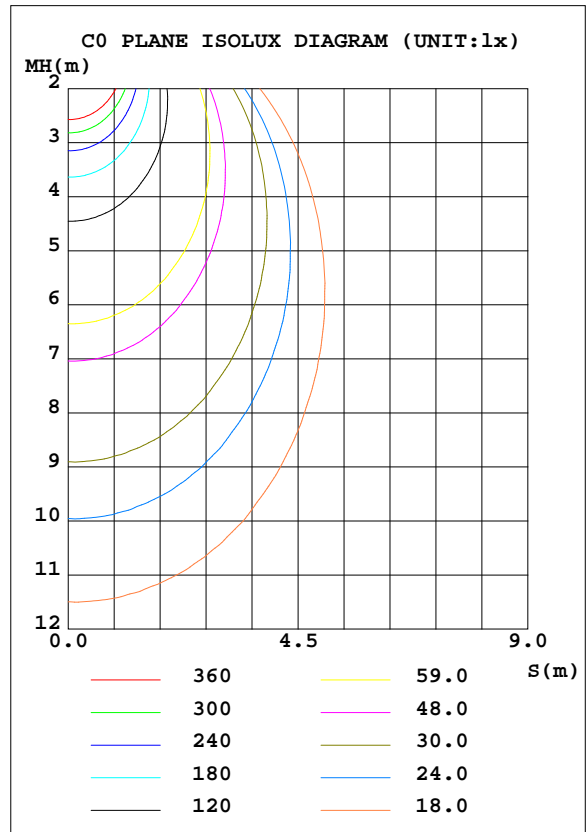
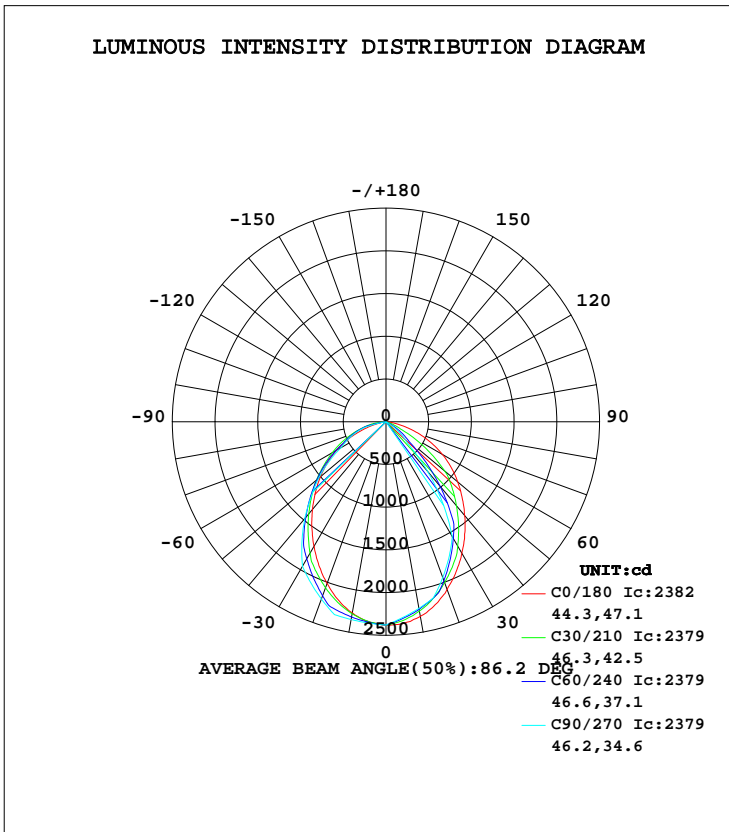


**LUMINAIRE PHOTOMETRIC TEST REPORT**

Test:U:11.93V I:1.124A P:12.43W PF:0.9274 Lamp Flux:235x1 lm		
NAME: 489944 BILTMORE 12W 3000K	TYPE:489944 BILTMORE 12W 3000K	WEIGHT:
SPEC.:	DIM.:	SERIAL No.:
MFR.:	SUR.:	PROTECTION ANGLE:

DATA OF LAMP		PHOTOMETRIC DATA Eff: 85.99 lm/W			
MODEL	BILTMORE 12W 3000K	Imax(cd)	2382	S/MH(C0/180)	1.08
NOMINAL POWER(W)	12	LOR(%)	455.0	S/MH(C90/270)	1.21
RATED VOLTAGE(V)	12	TOTAL FLUX(lm)	4549.9	η UP, DN(C0-180)	0.0,183.4
NOMINAL FLUX(lm)	1000	CIE CLASS	DIRECT	η UP, DN(C180-360)	0.0,271.6
LAMPS INSIDE	1	η up(%)	0.0	CIBSE SHR NOM	1.00
TEST VOLTAGE(V)	12	η down(%)	455.0	CIBSE SHR MAX	1.15



C Range: 0 - 360DEG  
 C Interval: 5.0DEG  
 Test Speed: HIGH  
 Temperature:20DEG  
 Operators:Y  
 Test Date:2024-03-15

γ Range: 0 - 90DEG  
 γ Interval: 0.5DEG  
 Test System:EVERFINE GO-2000B\_V1 SYSTEM V2.0.291  
 Humidity:65.0%  
 Test Distance:8.750m [K=1.0000]  
 Remarks:

**ZONAL FLUX DIAGRAM**

**ZONAL FLUX DIAGRAM:**

γ	C0	C45	C90	C135	C180	C225	C270	C315	γ	Φ zone	Φ total	lum, lamp
5	2370	2320	2298	2305	2347	2350	2365	2365	0- 5	56.28	56.28	1.24,5.63
10	2313	2238	2218	2212	2271	2301	2350	2331	5- 10	164.9	221.2	4.86,22.1
15	2218	2133	2137	2096	2158	2229	2336	2270	10- 15	265.0	486.2	10.7,48.6
20	2091	2009	1942	1966	2016	2141	2209	2195	15- 20	350.6	836.8	18.4,83.7
25	1941	1816	1746	1764	1858	1978	2082	2036	20- 25	414.4	1251	27.5,125
30	1776	1614	1551	1552	1685	1801	1955	1866	25- 30	457.4	1709	37.6,171
35	1606	1418	1154	1347	1514	1631	1716	1698	30- 35	476.4	2185	48,218
40	1433	1206	757.8	1130	1338	1458	1477	1526	35- 40	464.2	2649	58.2,265
45	1262	889.0	361.2	806.1	1168	1251	1238	1313	40- 45	426.9	3076	67.6,308
50	1097	588.5	240.9	497.7	1003	1061	1028	1114	45- 50	375.1	3451	75.9,345
55	932.0	310.6	120.5	213.8	837.0	884.8	818.1	927.9	50- 55	320.8	3772	82.9,377
60	760.3	187.7	0.1446	123.8	666.3	712.7	608.0	748.1	55- 60	260.2	4032	88.6,403
65	584.6	68.49	0.1686	42.79	496.3	551.8	492.8	580.7	60- 65	198.0	4230	93,423
70	409.2	3.296	0.1927	0.8947	318.8	413.8	377.7	437.4	65- 70	146.0	4376	96.2,438
75	237.2	1.933	0.2168	0.7213	164.1	297.6	262.6	316.3	70- 75	101.1	4477	98.4,448
80	96.27	0.4337	0	0.3924	42.12	159.6	0	171.1	75- 80	57.01	4534	99.7,453
85	15.17	0	0	0	3.552	0	0	0	80- 85	14.56	4549	100,455
90	1.228	0	0	0	0.0482	0	0	0	85- 90	0.9579	4550	100,455
95									90- 95			
100									95-100			
105									100-105			
110									105-110			
115									110-115			
120									115-120			
125									120-125			
130									125-130			
135									130-135			
140									135-140			
145									140-145			
150									145-150			
155									150-155			
160									155-160			
165									160-165			
170									165-170			
175									170-175			
180									175-180			
DEG	LUMINOUS INTENSITY:cd									UNIT:lm		

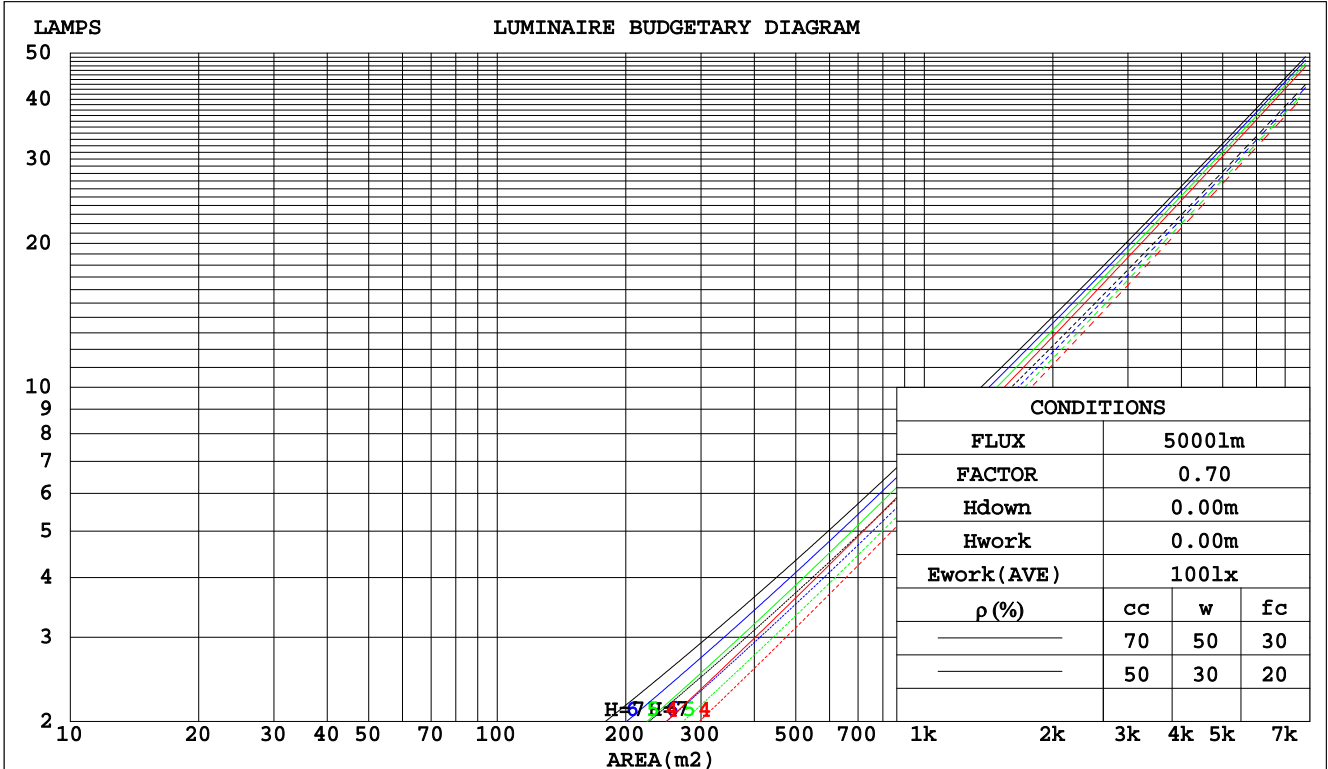
C Range: 0 - 360DEG  
 C Interval: 5.0DEG  
 Test Speed: HIGH  
 Temperature:20DEG  
 Operators:Y  
 Test Date:2024-03-15

γ Range: 0 - 90DEG  
 γ Interval: 0.5DEG  
 Test System:EVERFINE GO-2000B\_V1 SYSTEM V2.0.291  
 Humidity:65.0%  
 Test Distance:8.750m [K=1.0000]  
 Remarks:

**CU AND LUMINAIRE BUDGETARY ESTIMATE DIAGRAM**

Test:U:11.93V I:1.124A P:12.43W PF:0.9274 Lamp Flux:235x1 lm		
NAME: 489944 BILTMORE 12W 3000K	TYPE:489944 BILTMORE 12W 3000K	WEIGHT:
SPEC.:	DIM.:	SERIAL No.:
MFR.:	SUR.:	PROTECTION ANGLE:

pcc	80%			70%			50%			30%			10%			0
	50%	30%	10%	50%	30%	10%	50%	30%	10%	50%	30%	10%	50%	30%	10%	0
pw																0
pfc	20%			20%			20%			20%			20%			0
RCR	RCR:Room Cavity Ratio															
	Coefficients of Utilization(CU)															
0.0	5.42	5.42	5.42	5.29	5.29	5.29	5.06	5.06	5.06	4.84	4.84	4.84	4.64	4.64	4.64	4.55
1.0	4.86	4.70	4.55	4.76	4.61	4.48	4.57	4.45	4.34	4.39	4.30	4.21	4.23	4.15	4.08	3.99
2.0	4.33	4.06	3.84	4.25	4.00	3.80	4.09	3.89	3.71	3.94	3.78	3.63	3.81	3.67	3.55	3.46
3.0	3.87	3.55	3.29	3.80	3.51	3.26	3.67	3.42	3.21	3.55	3.34	3.15	3.44	3.26	3.10	3.01
4.0	3.49	3.13	2.86	3.43	3.10	2.84	3.32	3.03	2.81	3.22	2.97	2.77	3.12	2.91	2.74	2.65
5.0	3.16	2.79	2.52	3.11	2.76	2.51	3.01	2.71	2.48	2.93	2.66	2.46	2.85	2.62	2.43	2.34
6.0	2.87	2.50	2.24	2.83	2.48	2.23	2.75	2.44	2.21	2.68	2.40	2.19	2.61	2.37	2.18	2.09
7.0	2.63	2.26	2.01	2.59	2.25	2.00	2.53	2.22	1.99	2.46	2.18	1.98	2.40	2.15	1.96	1.88
8.0	2.42	2.06	1.82	2.39	2.05	1.81	2.33	2.02	1.80	2.28	2.00	1.79	2.23	1.97	1.78	1.70
9.0	2.23	1.89	1.65	2.21	1.88	1.65	2.16	1.86	1.64	2.11	1.83	1.63	2.07	1.81	1.63	1.55
10.0	2.07	1.74	1.52	2.05	1.73	1.51	2.01	1.71	1.51	1.97	1.69	1.50	1.93	1.68	1.49	1.42



C Range: 0 - 360DEG  
 C Interval: 5.0DEG  
 Test Speed: HIGH  
 Temperature:20DEG  
 Operators:Y  
 Test Date:2024-03-15

γ Range: 0 - 90DEG  
 γ Interval: 0.5DEG  
 Test System:EVERFINE GO-2000B\_V1 SYSTEM V2.0.291  
 Humidity:65.0%  
 Test Distance:8.750m [K=1.0000]  
 Remarks:

**WEC AND CCEC**

Test:U:11.93V I:1.124A P:12.43W PF:0.9274 Lamp Flux:235x1 lm														
NAME: 489944 BILTMORE 12W 3000K					TYPE:489944 BILTMORE 12W 3000K					WEIGHT:				
SPEC.:					DIM.:					SERIAL No.:				
MFR.:					SUR.:					PROTECTION ANGLE:				

ρcc	80%			70%			50%			30%			10%			0
ρw	50%	30%	10%	50%	30%	10%	50%	30%	10%	50%	30%	10%	50%	30%	10%	0
ρfc	20%			20%			20%			20%			20%			0
RCR	RCR:Room Cavity Ratio						Wall Exitance Coefficients(WEC)									
0.0																
1.0	1.158	.659	.209	1.127	.643	.204	1.068	.613	.196	1.013	.585	.188	.963	.558	.180	
2.0	1.122	.615	.189	1.095	.603	.186	1.043	.580	.180	.996	.559	.175	.952	.539	.170	
3.0	1.060	.564	.169	1.036	.555	.167	.991	.537	.163	.949	.520	.160	.911	.504	.156	
4.0	.995	.517	.152	.974	.509	.151	.934	.495	.148	.897	.482	.145	.863	.469	.143	
5.0	.932	.475	.138	.913	.469	.137	.878	.457	.135	.845	.446	.133	.815	.435	.131	
6.0	.874	.438	.125	.858	.433	.125	.826	.424	.123	.797	.414	.122	.770	.405	.120	
7.0	.822	.406	.115	.807	.402	.115	.779	.394	.113	.753	.386	.112	.728	.378	.111	
8.0	.774	.378	.106	.761	.374	.106	.736	.367	.105	.712	.361	.104	.690	.354	.103	
9.0	.730	.353	.099	.719	.350	.098	.696	.344	.098	.675	.338	.097	.655	.333	.096	
10.0	.691	.331	.092	.680	.329	.092	.660	.323	.091	.641	.318	.090	.623	.313	.090	

ρcc	80%			70%			50%			30%			10%			0
ρw	50%	30%	10%	50%	30%	10%	50%	30%	10%	50%	30%	10%	50%	30%	10%	0
ρfc	20%			20%			20%			20%			20%			0
RCR	RCR:Room Cavity Ratio						Ceiling Cavity Exitance Coefficients(CCEC)									
0.0	.867	.867	.867	.741	.741	.741	.506	.506	.506	.290	.290	.290	.093	.093	.093	
1.0	.803	.713	.631	.687	.612	.543	.470	.421	.376	.271	.243	.218	.087	.078	.071	
2.0	.756	.601	.471	.648	.517	.407	.444	.358	.284	.256	.208	.166	.082	.067	.054	
3.0	.716	.519	.362	.614	.448	.314	.421	.311	.220	.243	.182	.130	.078	.059	.042	
4.0	.679	.456	.286	.583	.394	.248	.401	.275	.175	.232	.161	.104	.075	.052	.034	
5.0	.646	.408	.232	.554	.353	.202	.382	.246	.142	.221	.145	.084	.071	.047	.028	
6.0	.614	.368	.192	.528	.319	.167	.364	.223	.118	.211	.131	.070	.068	.043	.023	
7.0	.585	.336	.162	.503	.292	.142	.348	.204	.100	.202	.120	.060	.065	.039	.020	
8.0	.557	.310	.140	.480	.269	.122	.332	.189	.086	.193	.111	.051	.062	.036	.017	
9.0	.532	.287	.122	.458	.249	.106	.317	.175	.075	.185	.103	.045	.060	.034	.015	
10.0	.508	.268	.108	.438	.232	.094	.304	.164	.067	.177	.097	.040	.057	.032	.013	

C Range: 0 - 360DEG  
C Interval: 5.0DEG  
Test Speed: HIGH  
Temperature:20DEG  
Operators:Y  
Test Date:2024-03-15

γ Range: 0 - 90DEG  
γ Interval: 0.5DEG  
Test System:EVERFINE GO-2000B\_V1 SYSTEM V2.0.291  
Humidity:65.0%  
Test Distance:8.750m [K=1.0000]  
Remarks:

**UGR(Unified Glare Rating) Table**

Test:U:11.93V I:1.124A P:12.43W PF:0.9274 Lamp Flux:235x1 lm										
NAME: 489944 BILTMORE 12W 3000K					TYPE:489944 BILTMORE 12W 3000K			WEIGHT:		
SPEC.:					DIM.:			SERIAL No.:		
MFR.:					SUR.:			PROTECTION ANGLE:		
ceiling/cavity	0.7	0.7	0.5	0.5	0.3	0.7	0.7	0.5	0.5	0.3
walls	0.5	0.3	0.5	0.3	0.3	0.5	0.3	0.5	0.3	0.3
working plane	0.2	0.2	0.2	0.2	0.2	0.2	0.2	0.2	0.2	0.2
Room dimensions	Viewed crosswise					Viewed endwise				
x = 2H y = 2H	19.3	20.6	19.5	20.8	21.0	12.7	14.0	12.9	14.2	14.4
3H	20.2	21.5	20.5	21.7	21.9	12.5	13.7	12.8	13.9	14.2
4H	20.4	21.6	20.7	21.8	22.1	12.4	13.5	12.7	13.8	14.0
6H	20.4	21.5	20.8	21.8	22.1	12.3	13.4	12.6	13.6	13.9
8H	20.4	21.5	20.7	21.7	22.0	12.2	13.3	12.6	13.6	13.8
12H	20.4	21.4	20.7	21.7	22.0	12.2	13.2	12.5	13.5	13.8
4H 2H	19.0	20.2	19.3	20.4	20.7	13.1	14.2	13.4	14.5	14.7
3H	20.0	21.0	20.3	21.3	21.6	12.8	13.9	13.2	14.2	14.4
4H	20.2	21.1	20.5	21.4	21.7	12.7	13.7	13.1	14.0	14.3
6H	20.2	21.0	20.6	21.4	21.7	12.7	13.5	13.0	13.8	14.2
8H	20.2	20.9	20.6	21.3	21.7	12.6	13.4	13.0	13.7	14.1
12H	20.1	20.8	20.6	21.2	21.6	12.6	13.3	13.0	13.6	14.0
8H 4H	20.0	20.8	20.4	21.2	21.5	12.6	13.4	13.1	13.8	14.1
6H	20.1	20.7	20.5	21.1	21.5	12.6	13.2	13.0	13.6	14.0
8H	20.1	20.6	20.5	21.0	21.5	12.5	13.1	13.0	13.5	13.9
12H	20.0	20.5	20.5	20.9	21.4	12.5	12.9	12.9	13.4	13.9
12H 4H	20.0	20.7	20.4	21.1	21.5	12.6	13.3	13.0	13.7	14.1
6H	20.0	20.6	20.5	21.0	21.4	12.5	13.1	13.0	13.5	13.9
8H	20.0	20.5	20.5	20.9	21.4	12.5	12.9	12.9	13.4	13.9
Variations with the observer position at spacings:										
S = 1.0H	+ 0.4 / - 0.4					+ 2.3 / - 7.7				
1.5H	+ 1.0 / - 1.8					+ 2.4 / - 3.7				
2.0H	+ 2.0 / - 6.6					+ 3.2 / -25.9				

CIE Pub.117 Corrected 1000 lm Total Lamp Luminous Flux.(8log(F/F0) = 0.0)

C Range: 0 - 360DEG  
C Interval: 5.0DEG  
Test Speed: HIGH  
Temperature:20DEG  
Operators:Y  
Test Date:2024-03-15

γ Range: 0 - 90DEG  
γ Interval: 0.5DEG  
Test System:EVERFINE GO-2000B\_V1 SYSTEM V2.0.291  
Humidity:65.0%  
Test Distance:8.750m [K=1.0000]  
Remarks:

**UTILIZATION FACTORS TABLE**

Test:U:11.93V I:1.124A P:12.43W PF:0.9274 Lamp Flux:235x1 lm		
NAME: 489944 BILTMORE 12W 3000K	TYPE:489944 BILTMORE 12W 3000K	WEIGHT:
SPEC.:	DIM.:	SERIAL No.:
MFR.:	SUR.:	PROTECTION ANGLE:

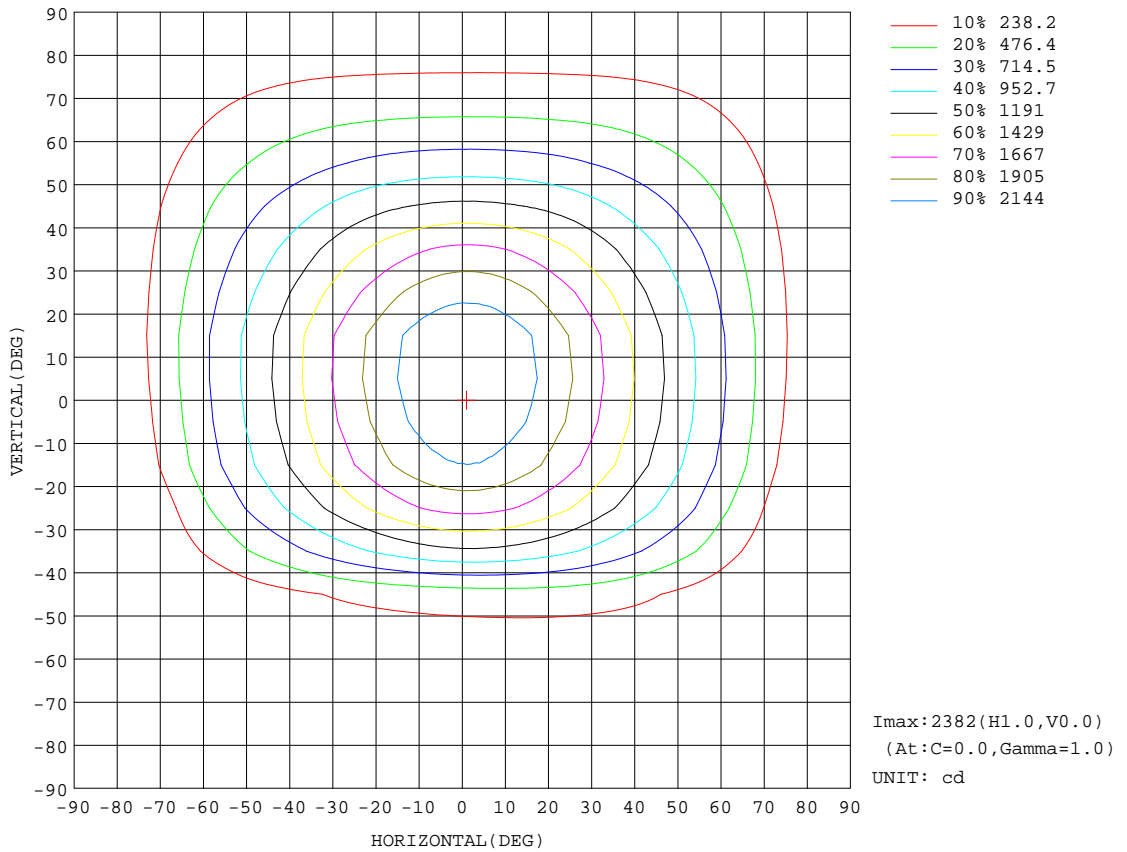
REFLECTANCE										
Ceiling	0.8	0.8	0.8	0.7	0.7	0.7	0.5	0.5	0.5	0
Walls	0.7	0.5	0.3	0.7	0.5	0.3	0.7	0.5	0.3	0
Working plane	0.2	0.2	0.2	0.2	0.2	0.2	0.2	0.2	0.2	0
ROOM INDEX	UTILIZATION FACTORS(PERCENT) $k(RI) \times RCR = 5$									
k = 0.60	297	251	223	294	250	222	289	248	222	196
0.80	342	297	268	338	295	267	331	292	266	238
1.00	378	336	308	374	333	306	364	337	304	276
1.25	408	368	341	402	365	339	391	359	336	307
1.50	428	391	365	421	387	363	409	380	358	328
2.00	454	423	399	447	417	395	432	408	388	357
2.50	469	440	417	460	434	413	444	422	405	371
3.00	481	456	436	472	449	431	455	436	421	386
4.00	496	475	458	486	467	452	468	452	440	402
5.00	505	487	472	494	479	465	475	462	451	412
ROOM INDEX	UF(total)									Direct
According to DIN EN 13032-2 2004			Suspended				SHRNOM = 1.25			

C Range: 0 - 360DEG  
C Interval: 5.0DEG  
Test Speed: HIGH  
Temperature:20DEG  
Operators:Y  
Test Date:2024-03-15

$\gamma$  Range: 0 - 90DEG  
 $\gamma$  Interval: 0.5DEG  
Test System:EVERFINE GO-2000B\_V1 SYSTEM V2.0.291  
Humidity:65.0%  
Test Distance:8.750m [K=1.0000]  
Remarks:

**ISOCANDELA DIAGRAM**

Test:U:11.93V I:1.124A P:12.43W PF:0.9274 Lamp Flux:235x1 lm		
NAME: 489944 BILTMORE 12W 3000K	TYPE:489944 BILTMORE 12W 3000K	WEIGHT:
SPEC.:	DIM.:	SERIAL No.:
MFR.:	SUR.:	PROTECTION ANGLE:

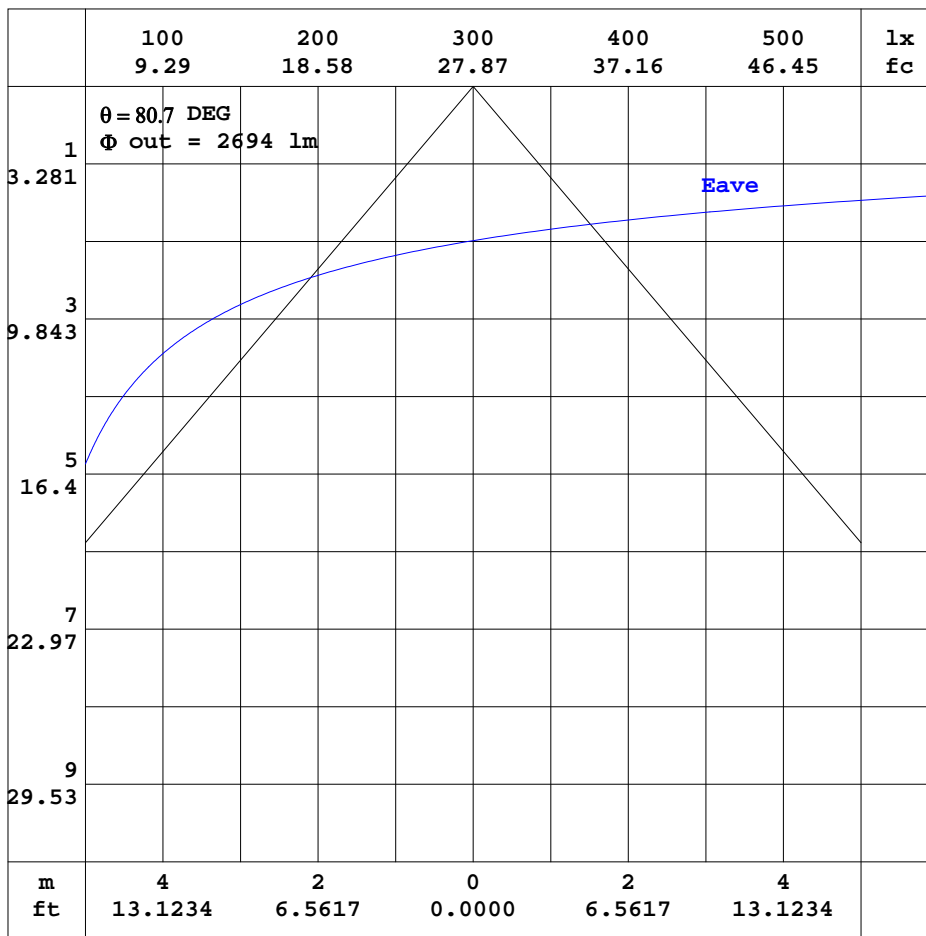


C Range: 0 - 360DEG  
 C Interval: 5.0DEG  
 Test Speed: HIGH  
 Temperature:20DEG  
 Operators:Y  
 Test Date:2024-03-15

γ Range: 0 - 90DEG  
 γ Interval: 0.5DEG  
 Test System:EVERFINE GO-2000B\_V1 SYSTEM V2.0.291  
 Humidity:65.0%  
 Test Distance:8.750m [K=1.0000]  
 Remarks:

AAI CURVES

Test:U:11.93V I:1.124A P:12.43W PF:0.9274 Lamp Flux:235x1 lm		
NAME: 489944 BILTMORE 12W 3000K	TYPE:489944 BILTMORE 12W 3000K	WEIGHT:
SPEC.:	DIM.:	SERIAL No.:
MFR.:	SUR.:	PROTECTION ANGLE:



Note:The Curves indicate the illuminated area and the average illumination when the luminaire is at different distance.

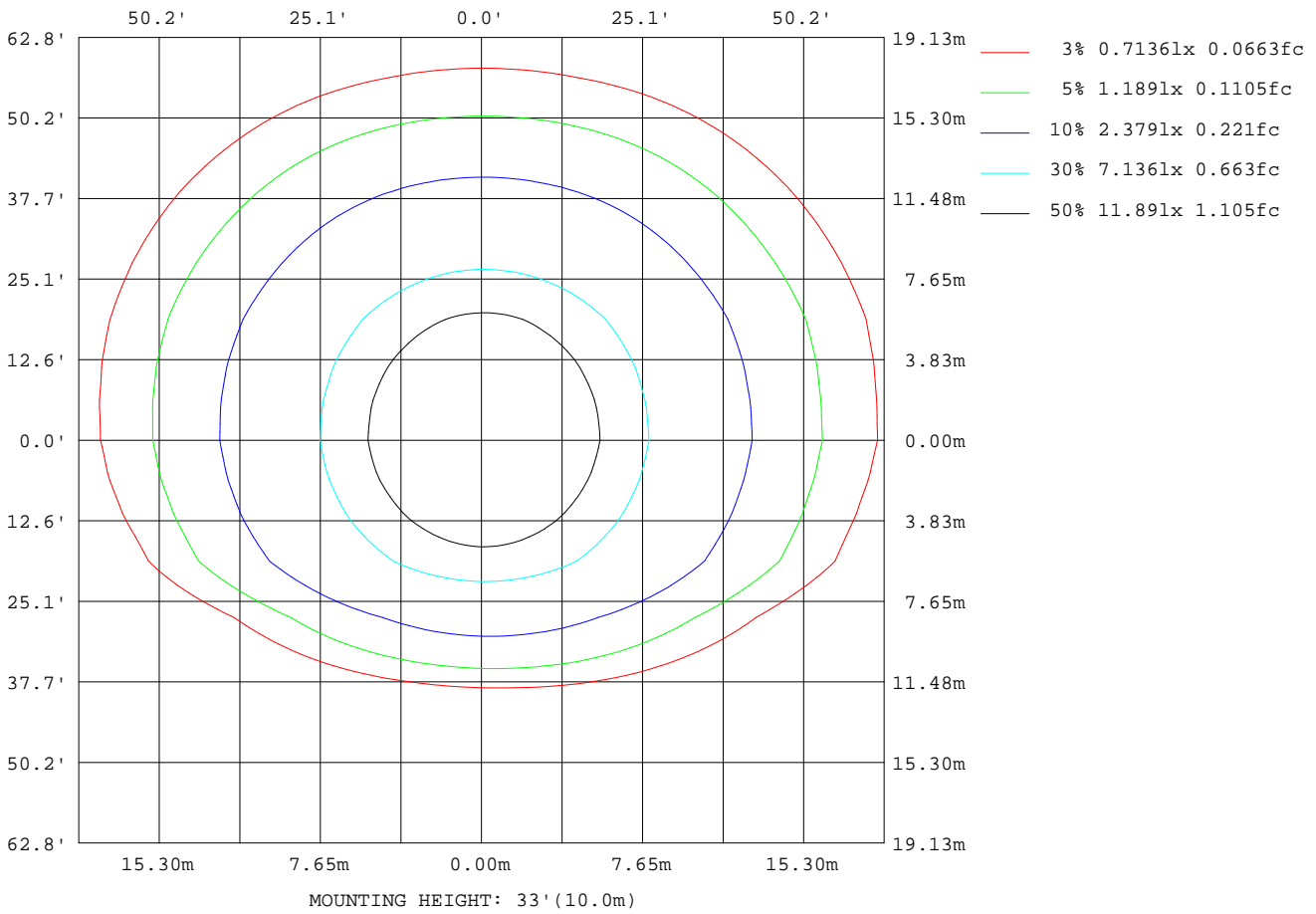
C Range: 0 - 360DEG  
C Interval: 5.0DEG  
Test Speed: HIGH  
Temperature:20DEG  
Operators:Y  
Test Date:2024-03-15

$\gamma$  Range: 0 - 90DEG  
 $\gamma$  Interval: 0.5DEG  
Test System:EVERFINE GO-2000B\_V1 SYSTEM V2.0.291  
Humidity:65.0%  
Test Distance:8.750m [K=1.0000]  
Remarks:



**ISOLUX DIAGRAM**

Test:U:11.93V I:1.124A P:12.43W PF:0.9274 Lamp Flux:235x1 lm		
NAME: 489944 BILTMORE 12W 3000K	TYPE:489944 BILTMORE 12W 3000K	WEIGHT:
SPEC.:	DIM.:	SERIAL No.:
MFR.:	SUR.:	PROTECTION ANGLE:



C Range: 0 - 360DEG  
C Interval: 5.0DEG  
Test Speed: HIGH  
Temperature:20DEG  
Operators:Y  
Test Date:2024-03-15

γ Range: 0 - 90DEG  
γ Interval: 0.5DEG  
Test System:EVERFINE GO-2000B\_V1 SYSTEM V2.0.291  
Humidity:65.0%  
Test Distance:8.750m [K=1.0000]  
Remarks:

**LED Avg.L Report**

Test:U:11.93V I:1.124A P:12.43W PF:0.9274 Lamp Flux:235x1 lm		
NAME: 489944 BILTMORE 12W 3000K	TYPE:489944 BILTMORE 12W 3000K	WEIGHT:
SPEC.:	DIM.:	SERIAL No.:
MFR.:	SUR.:	PROTECTION ANGLE:

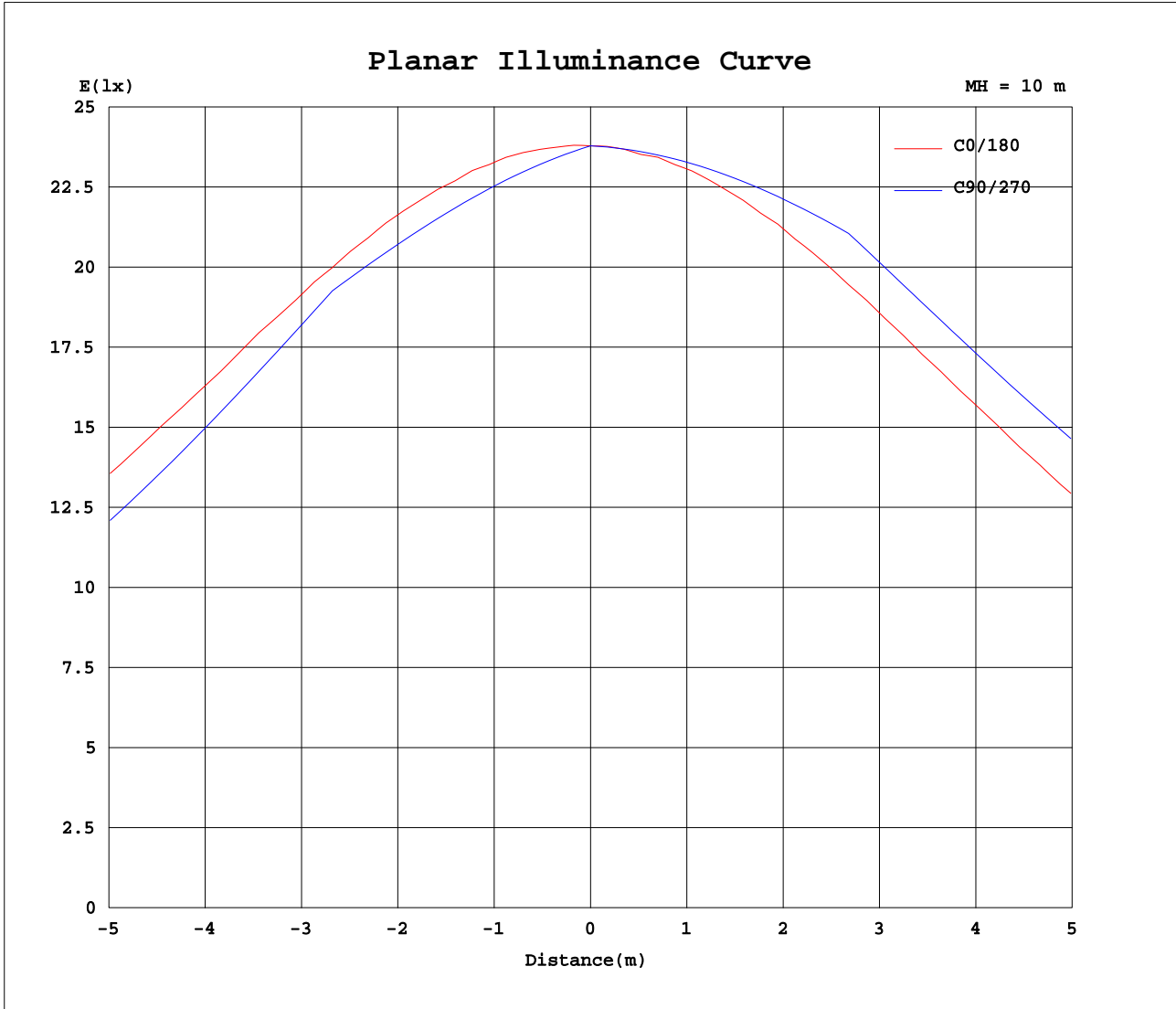
AvgL	cd/m2
L_0~180(65)av	6394
L_0~180(75)av	3877
L_0~180(85)av	537
L_90~270(65)av	2916
L_90~270(75)av	2538
L_90~270(85)av	0
L_45(65)av	3679
L_45(75)av	2978
L_45(85)av	0

Standard: GB/T 29293-2012

C Range: 0 - 360DEG  
C Interval: 5.0DEG  
Test Speed: HIGH  
Temperature:20DEG  
Operators:Y  
Test Date:2024-03-15

γ Range: 0 - 90DEG  
γ Interval: 0.5DEG  
Test System:EVERFINE GO-2000B\_V1 SYSTEM V2.0.291  
Humidity:65.0%  
Test Distance:8.750m [K=1.0000]  
Remarks:

Planar Illuminance Curve



C Range: 0 - 360DEG  
 C Interval: 5.0DEG  
 Test Speed: HIGH  
 Temperature: 20DEG  
 Operators: Y  
 Test Date: 2024-03-15

γ Range: 0 - 90DEG  
 γ Interval: 0.5DEG  
 Test System: EVERFINE GO-2000B\_V1 SYSTEM V2.0.291  
 Humidity: 65.0%  
 Test Distance: 8.750m [K=1.0000]  
 Remarks:

LUMINOUS DISTRIBUTION INTENSITY DATA

Test:U:11.93V I:1.124A P:12.43W PF:0.9274 Lamp Flux:235x1 lm		
NAME: 489944 BILTMORE 12W 3000K	TYPE:489944 BILTMORE 12W 3000K	WEIGHT:
SPEC.:	DIM.:	SERIAL No.:
MFR.:	SUR.:	PROTECTION ANGLE:

Table--1

UNIT: cd

C(DEG) γ (DEG)	0	5	10	15	20	25	30	35	40	45	50	55	60	65	70	75	80	85	90
0	2379	2379	2379	2379	2379	2379	2379	2379	2379	2379	2379	2379	2379	2379	2379	2379	2379	2379	2379
5	2370	2363	2356	2350	2344	2338	2333	2329	2324	2320	2315	2312	2309	2307	2305	2304	2303	2300	2298
10	2313	2300	2287	2276	2267	2258	2250	2244	2240	2238	2233	2230	2230	2229	2226	2224	2223	2222	2218
15	2218	2198	2182	2168	2157	2146	2139	2136	2134	2133	2133	2134	2137	2137	2141	2144	2142	2142	2137
20	2091	2066	2045	2030	2018	2009	2004	2005	2006	2009	2004	1992	1981	1971	1962	1957	1951	1946	1942
25	1941	1911	1889	1873	1862	1855	1855	1857	1834	1816	1802	1787	1777	1771	1764	1757	1754	1749	1746
30	1776	1746	1723	1708	1697	1695	1680	1655	1632	1614	1598	1587	1577	1570	1566	1560	1557	1553	1551
35	1606	1573	1550	1535	1530	1512	1482	1453	1433	1418	1403	1391	1339	1286	1243	1208	1180	1164	1154
40	1433	1398	1376	1365	1351	1314	1282	1259	1242	1206	1127	1052	984	923	870	826	791	769	758
45	1262	1227	1205	1198	1156	1121	1095	1075	981	889	803	719	640	568	503	448	404	375	361
50	1097	1060	1041	1015	972	941	898	791	689	589	492	397	343	317	293	273	258	247	241
55	932	894	876	833	797	747	628	517	410	311	277	245	216	189	167	148	134	125	120
60	760	722	695	646	609	486	367	254	221	188	153	119	88.4	61.5	39.2	21.8	9.61	2.46	0.14
65	585	545	497	446	348	234	159	136	105	68.5	30.3	1.60	0.81	0.45	0.29	0.24	0.19	0.18	0.17
70	409	356	298	222	117	83.6	65.3	35.4	4.43	3.30	2.18	1.26	0.68	0.40	0.30	0.26	0.22	0.21	0.19
75	237	180	111	40.7	28.6	17.8	4.33	3.44	2.65	1.93	1.25	0.70	0.42	0.32	0.28	0.27	0.25	0.25	0.22
80	96.3	44.1	14.2	8.47	3.90	2.83	1.84	1.16	0.64	0.43	0.28	0.15	0.09	0.06	0.03	0.02	0.01	0.00	0.00
85	15.2	5.61	3.00	2.01	0.96	0.29	0.00	0.00	0.00	0.00	0.00	0.00	0.00	0.00	0.00	0.00	0.00	0.00	0.00
90	1.23	0.00	0.00	0.00	0.00	0.00	0.00	0.00	0.00	0.00	0.00	0.00	0.00	0.00	0.00	0.00	0.00	0.00	0.00

C Range: 0 - 360DEG  
 C Interval: 5.0DEG  
 Test Speed: HIGH  
 Temperature:20DEG  
 Operators:Y  
 Test Date:2024-03-15

γ Range: 0 - 90DEG  
 γ Interval: 0.5DEG  
 Test System:EVERFINE GO-2000B\_V1 SYSTEM V2.0.291  
 Humidity:65.0%  
 Test Distance:8.750m [K=1.0000]  
 Remarks:

LUMINOUS DISTRIBUTION INTENSITY DATA

Test:U:11.93V I:1.124A P:12.43W PF:0.9274 Lamp Flux:235x1 lm		
NAME: 489944 BILTMORE 12W 3000K	TYPE:489944 BILTMORE 12W 3000K	WEIGHT:
SPEC.:	DIM.:	SERIAL No.:
MFR.:	SUR.:	PROTECTION ANGLE:

Table--2

UNIT: cd

C(DEG)\ γ (DEG)	95	100	105	110	115	120	125	130	135	140	145	150	155	160	165	170	175	180	185	
0	2379	2379	2379	2379	2379	2379	2379	2379	2379	2379	2379	2379	2379	2379	2379	2379	2379	2379	2379	
5	2299	2300	2299	2299	2299	2299	2299	2301	2305	2309	2313	2316	2319	2324	2329	2334	2340	2347	2346	
10	2219	2216	2214	2213	2212	2209	2209	2210	2212	2213	2215	2220	2225	2230	2238	2247	2258	2271	2269	
15	2137	2133	2130	2122	2117	2113	2107	2100	2096	2093	2091	2094	2098	2104	2113	2124	2140	2158	2156	
20	1939	1940	1938	1941	1945	1947	1955	1965	1966	1955	1950	1948	1949	1951	1960	1974	1993	2016	2013	
25	1741	1739	1737	1736	1736	1738	1742	1750	1764	1778	1799	1790	1787	1789	1795	1810	1831	1858	1855	
30	1544	1541	1536	1532	1531	1530	1535	1541	1552	1566	1586	1613	1622	1622	1626	1638	1657	1685	1684	
35	1152	1162	1177	1204	1238	1285	1332	1337	1347	1362	1381	1404	1436	1451	1452	1462	1483	1514	1512	
40	757	769	792	826	870	924	984	1054	1130	1162	1179	1200	1230	1268	1278	1287	1306	1338	1338	
45	363	379	410	453	509	572	644	723	806	895	986	1006	1033	1070	1112	1118	1136	1168	1170	
50	238	239	243	251	261	273	317	405	498	594	695	804	850	883	928	951	969	1003	1008	
55	120	124	131	141	154	169	185	201	214	308	417	531	649	699	740	789	803	837	845	
60	2.34	8.71	19.0	32.7	49.3	68.0	87.9	107	124	138	153	269	385	496	543	606	633	666	680	
65	0.15	0.10	0.10	0.10	0.09	0.10	0.30	19.7	42.8	62.0	74.7	75.8	139	252	344	403	453	496	515	
70	0.18	0.16	0.16	0.16	0.17	0.23	0.34	0.55	0.89	1.37	17.5	27.0	28.8	59.5	141	193	274	319	357	
75	0.22	0.21	0.21	0.23	0.25	0.31	0.38	0.50	0.72	1.08	1.60	2.16	6.78	11.5	20.0	53.6	105	164	204	
80	0.00	0.01	0.01	0.03	0.05	0.10	0.16	0.26	0.39	0.60	0.90	1.25	1.75	2.28	4.47	6.86	16.7	42.1	80.5	
85	0.00	0.00	0.00	0.00	0.00	0.00	0.00	0.00	0.00	0.00	0.00	0.00	0.00	0.30	0.88	1.29	1.52	1.69	3.55	12.8
90	0.00	0.00	0.00	0.00	0.00	0.00	0.00	0.00	0.00	0.00	0.00	0.00	0.00	0.00	0.00	0.00	0.00	0.00	0.05	0.00

C Range: 0 - 360DEG  
 C Interval: 5.0DEG  
 Test Speed: HIGH  
 Temperature: 20DEG  
 Operators: Y  
 Test Date: 2024-03-15

γ Range: 0 - 90DEG  
 γ Interval: 0.5DEG  
 Test System: EVERFINE GO-2000B\_V1 SYSTEM V2.0.291  
 Humidity: 65.0%  
 Test Distance: 8.750m [K=1.0000]  
 Remarks:

LUMINOUS DISTRIBUTION INTENSITY DATA

Test:U:11.93V I:1.124A P:12.43W PF:0.9274 Lamp Flux:235x1 lm		
NAME: 489944 BILTMORE 12W 3000K	TYPE:489944 BILTMORE 12W 3000K	WEIGHT:
SPEC.:	DIM.:	SERIAL No.:
MFR.:	SUR.:	PROTECTION ANGLE:

Table--3

UNIT: cd

C( DEG) γ (DEG)	190	195	200	205	210	215	220	225	230	235	240	245	250	255	260	265	270	275	280
0	2379	2379	2379	2379	2379	2379	2379	2379	2379	2379	2379	2379	2379	2379	2379	2379	2379	2379	2379
5	2345	2345	2345	2346	2348	2349	2350	2350	2351	2352	2355	2358	2360	2362	2363	2364	2365	2365	2365
10	2269	2271	2274	2279	2283	2288	2294	2301	2307	2314	2320	2327	2334	2340	2344	2347	2350	2349	2346
15	2157	2161	2168	2177	2188	2201	2214	2229	2246	2263	2276	2289	2302	2313	2326	2330	2336	2331	2331
20	2015	2021	2033	2049	2069	2091	2116	2141	2157	2161	2169	2176	2182	2190	2198	2203	2209	2206	2211
25	1859	1870	1886	1908	1936	1966	1970	1978	1987	1998	2013	2025	2040	2053	2066	2074	2082	2082	2083
30	1692	1708	1728	1762	1779	1783	1789	1801	1816	1835	1854	1875	1894	1915	1933	1945	1955	1957	1952
35	1521	1542	1572	1589	1590	1598	1614	1631	1652	1673	1680	1684	1692	1697	1705	1710	1716	1720	1723
40	1352	1376	1397	1398	1407	1421	1441	1458	1458	1460	1461	1464	1466	1468	1471	1474	1477	1481	1486
45	1185	1214	1214	1218	1231	1252	1252	1251	1254	1255	1254	1253	1249	1244	1243	1238	1238	1243	1250
50	1028	1044	1042	1052	1064	1061	1060	1061	1063	1062	1057	1050	1041	1036	1031	1028	1028	1032	1038
55	872	875	882	891	889	886	886	885	880	873	865	854	844	833	824	819	818	821	829
60	706	710	725	725	727	729	721	713	704	693	680	664	647	631	619	611	608	612	622
65	534	550	560	570	575	571	563	552	538	523	519	513	506	501	496	494	493	495	499
70	375	394	411	421	425	423	417	414	410	405	400	395	389	385	381	378	378	379	383
75	236	261	275	285	292	297	299	298	294	289	283	278	272	268	265	263	263	264	267
80	118	140	159	172	181	185	186	160	127	97.9	71.7	49.6	31.6	17.7	7.85	1.96	0.00	1.97	7.92
85	31.2	50.6	58.5	33.5	0.00	0.00	0.00	0.00	0.00	0.00	0.00	0.00	0.00	0.00	0.00	0.00	0.00	0.00	0.00
90	0.00	0.00	0.00	0.00	0.00	0.00	0.00	0.00	0.00	0.00	0.00	0.00	0.00	0.00	0.00	0.00	0.00	0.00	0.00

C Range: 0 - 360DEG  
C Interval: 5.0DEG  
Test Speed: HIGH  
Temperature:20DEG  
Operators:Y  
Test Date:2024-03-15

γ Range: 0 - 90DEG  
γ Interval: 0.5DEG  
Test System:EVERFINE GO-2000B\_V1 SYSTEM V2.0.291  
Humidity:65.0%  
Test Distance:8.750m [K=1.0000]  
Remarks:

**LUMINOUS DISTRIBUTION INTENSITY DATA**

Test:U:11.93V I:1.124A P:12.43W PF:0.9274 Lamp Flux:235x1 lm		
NAME: 489944 BILTMORE 12W 3000K	TYPE:489944 BILTMORE 12W 3000K	WEIGHT:
SPEC.:	DIM.:	SERIAL No.:
MFR.:	SUR.:	PROTECTION ANGLE:

Table--4

UNIT: cd

C( DEG) γ (DEG)	285	290	295	300	305	310	315	320	325	330	335	340	345	350	355				
0	2379	2379	2379	2379	2379	2379	2379	2379	2379	2379	2379	2379	2379	2379	2379				
5	2365	2364	2364	2364	2365	2365	2365	2366	2366	2365	2366	2366	2367	2368	2369				
10	2347	2348	2346	2341	2337	2334	2331	2324	2319	2315	2313	2311	2309	2309	2311				
15	2331	2323	2317	2308	2294	2281	2270	2259	2248	2237	2230	2224	2218	2215	2215				
20	2210	2212	2208	2203	2205	2203	2195	2172	2150	2130	2114	2104	2095	2089	2088				
25	2081	2073	2064	2057	2050	2042	2036	2034	2036	2005	1981	1962	1948	1939	1937				
30	1946	1932	1919	1904	1890	1877	1866	1857	1851	1854	1838	1812	1792	1780	1774				
35	1725	1728	1728	1732	1733	1713	1698	1684	1673	1669	1667	1653	1629	1612	1604				
40	1488	1493	1498	1506	1510	1518	1526	1514	1496	1486	1481	1483	1464	1442	1431				
45	1257	1268	1280	1290	1298	1306	1313	1322	1330	1311	1300	1296	1300	1274	1261				
50	1047	1058	1072	1084	1098	1106	1114	1121	1130	1140	1131	1123	1125	1110	1096				
55	841	855	872	888	903	917	928	937	944	954	968	960	955	952	932				
60	636	656	677	698	717	734	748	762	776	782	790	802	788	782	764				
65	505	513	523	532	541	561	581	597	611	622	625	626	627	608	592				
70	389	396	404	413	421	429	437	445	457	465	469	465	457	443	426				
75	272	278	285	293	301	309	316	322	326	326	324	318	308	296	270				
80	18.0	32.2	51.0	74.2	102	135	171	202	206	206	202	193	180	161	135				
85	0.00	0.00	0.00	0.00	0.00	0.00	0.00	0.00	0.00	0.00	41.1	78.8	75.2	60.6	36.9				
90	0.00	0.00	0.00	0.00	0.00	0.00	0.00	0.00	0.00	0.00	0.00	0.00	0.00	0.00	0.00				

C Range: 0 - 360DEG  
C Interval: 5.0DEG  
Test Speed: HIGH  
Temperature:20DEG  
Operators:Y  
Test Date:2024-03-15

γ Range: 0 - 90DEG  
γ Interval: 0.5DEG  
Test System:EVERFINE GO-2000B\_V1 SYSTEM V2.0.291  
Humidity:65.0%  
Test Distance:8.750m [K=1.0000]  
Remarks: