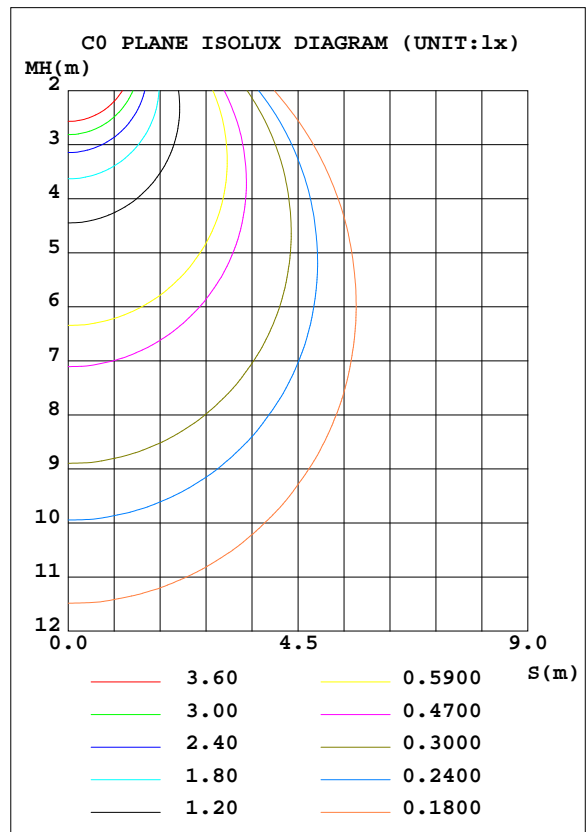
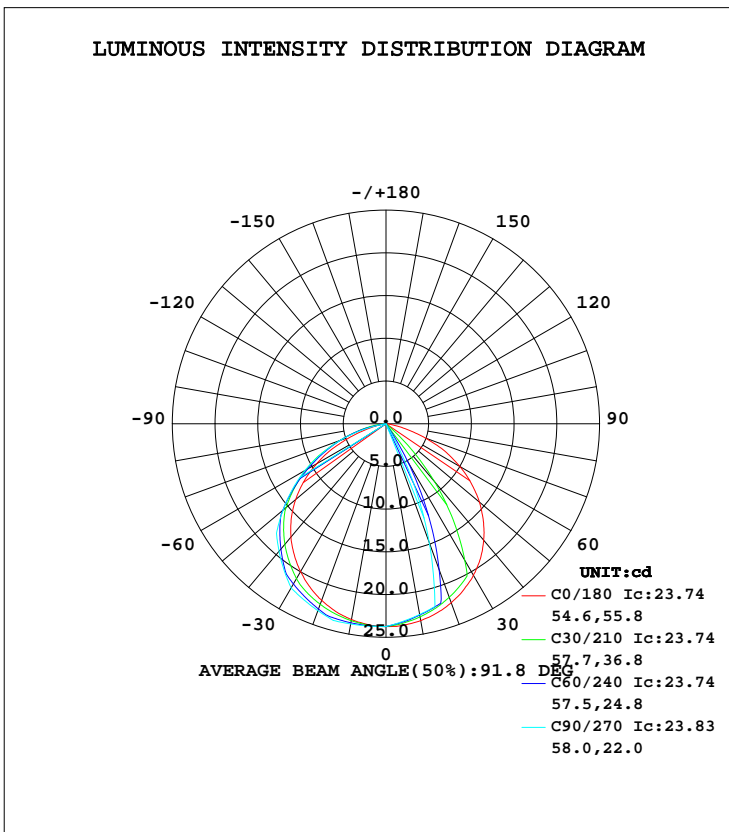


## LUMINAIRE PHOTOMETRIC TEST REPORT

Test:U:11.96V I:0.1256A P:1.451W PF:0.9661 Lamp Flux:235x1 lm		
NAME: 490085-3000K AXLE	TYPE:490085-3000K AXLE	WEIGHT:
SPEC.:	DIM.:	SERIAL No.:
MFR.:	SUR.:	PROTECTION ANGLE:

DATA OF LAMP		PHOTOMETRIC DATA Eff: 77.16 lm/W			
MODEL	490085-3000K AXLE	I <sub>max</sub> (cd)	23.83	S/MH(C0/180)	1.25
NOMINAL POWER(W)	2	LOR(%)	47.7	S/MH(C90/270)	1.36
RATED VOLTAGE(V)	12	TOTAL FLUX(lm)	47.657	η UP, DN(C0-180)	0.0,13.3
NOMINAL FLUX(lm)	100	CIE CLASS	DIRECT	η UP, DN(C180-360)	0.0,34.3
LAMPS INSIDE	1	η up(%)	0.0	CIBSE SHR NOM	0.75
TEST VOLTAGE(V)	12	η down(%)	47.7	CIBSE SHR MAX	0.90



C Range: 0 - 360DEG  
 C Interval: 5.0DEG  
 Test Speed: HIGH  
 Temperature:20DEG  
 Operators:Y  
 Test Date:2024-03-15

γ Range: 0 - 90DEG  
 γ Interval: 0.5DEG  
 Test System:EVERFINE GO-2000B\_V1 SYSTEM V2.0.291  
 Humidity:65.0%  
 Test Distance:8.750m [K=1.0000]  
 Remarks:

**ZONAL FLUX DIAGRAM**

ZONAL FLUX DIAGRAM:

γ	C0	C45	C90	C135	C180	C225	C270	C315	γ	Φ zone	Φ total	lum, lamp
5	23.65	23.35	23.20	23.31	23.60	23.70	23.77	23.74	0- 5	0.5645	0.5645	1.18,0.56
10	23.39	22.83	22.67	22.75	23.27	23.53	23.80	23.62	5- 10	1.672	2.236	4.69,2.24
15	22.94	22.23	22.14	22.14	22.74	23.27	23.83	23.41	10- 15	2.730	4.966	10.4,4.97
20	22.30	21.57	14.82	21.46	22.00	22.95	23.29	23.11	15- 20	3.637	8.603	18.1,8.6
25	21.48	16.59	7.502	16.47	21.09	22.15	22.74	22.40	20- 25	4.191	12.79	26.8,12.8
30	20.48	10.83	0.1825	10.72	19.98	21.23	22.20	21.53	25- 30	4.413	17.21	36.1,17.2
35	19.27	5.057	0.1216	4.990	18.72	20.23	20.84	20.57	30- 35	4.413	21.62	45.4,21.6
40	17.79	0.1657	0.0608	0.1620	17.31	19.09	19.48	19.50	35- 40	4.392	26.01	54.6,26
45	16.13	0.1137	0	0.1067	15.68	17.29	18.12	17.70	40- 45	4.287	30.30	63.6,30.3
50	14.28	0.0542	0	0.0520	13.80	15.45	15.74	15.85	45- 50	4.065	34.36	72.1,34.4
55	12.20	0	0	0	11.70	13.56	13.35	13.94	50- 55	3.679	38.04	79.8,38
60	9.969	0	0	0	9.357	10.81	10.97	11.19	55- 60	3.175	41.22	86.5,41.2
65	7.627	0	0	0	6.892	8.150	8.329	8.544	60- 65	2.568	43.79	91.9,43.8
70	4.937	0	0	0	4.174	5.704	5.689	6.061	65- 70	1.905	45.69	95.9,45.7
75	2.484	0	0	0	1.986	3.601	3.049	3.835	70- 75	1.242	46.93	98.5,46.9
80	0.8047	0	0	0	0.5296	1.493	0	1.602	75- 80	0.6017	47.53	99.7,47.5
85	0.0089	0	0	0	0	0	0	0	80- 85	0.1184	47.65	100,47.7
90	0	0	0	0	0	0	0	0	85- 90	0.0043	47.66	100,47.7
95									90- 95			
100									95-100			
105									100-105			
110									105-110			
115									110-115			
120									115-120			
125									120-125			
130									125-130			
135									130-135			
140									135-140			
145									140-145			
150									145-150			
155									150-155			
160									155-160			
165									160-165			
170									165-170			
175									170-175			
180									175-180			
DEG	LUMINOUS INTENSITY:cd								UNIT:lm			

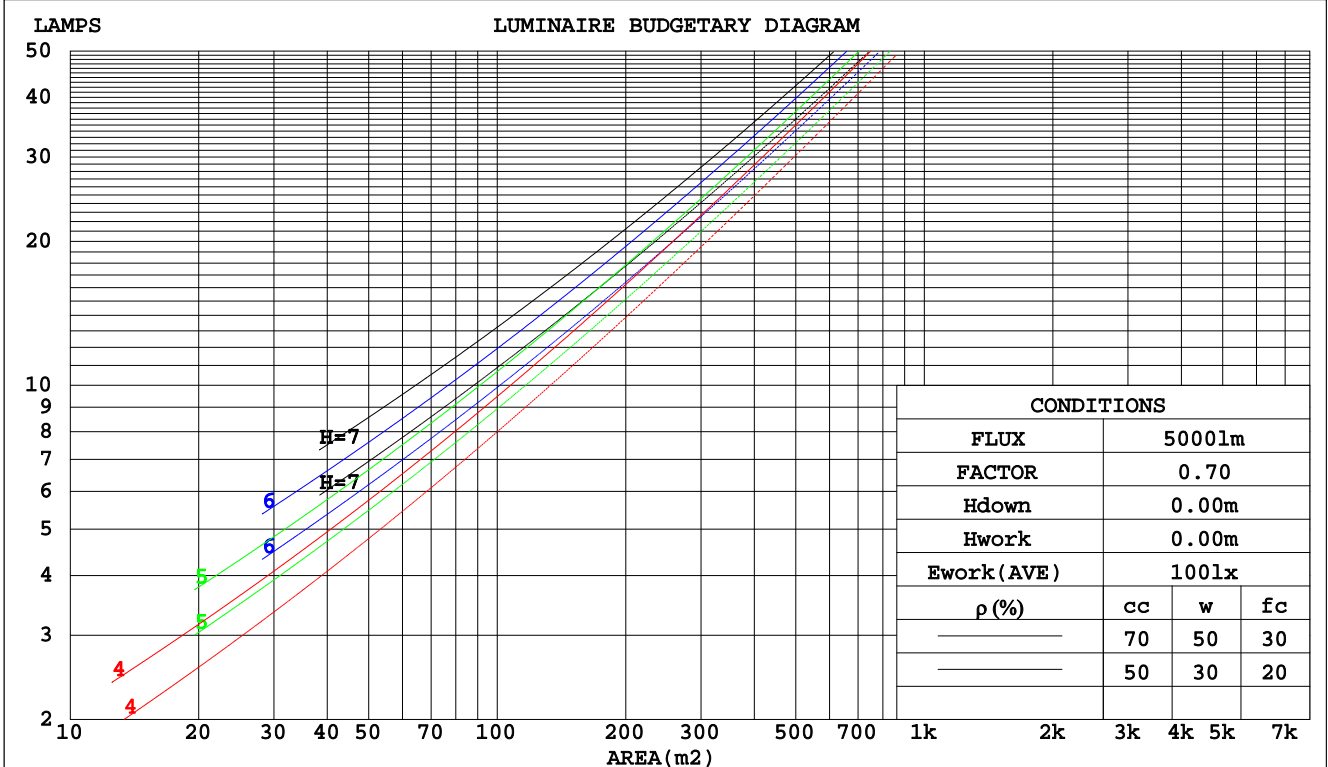
C Range: 0 - 360DEG  
 C Interval: 5.0DEG  
 Test Speed: HIGH  
 Temperature:20DEG  
 Operators:Y  
 Test Date:2024-03-15

γ Range: 0 - 90DEG  
 γ Interval: 0.5DEG  
 Test System:EVERFINE GO-2000B\_V1 SYSTEM V2.0.291  
 Humidity:65.0%  
 Test Distance:8.750m [K=1.0000]  
 Remarks:

**CU AND LUMINAIRE BUDGETARY ESTIMATE DIAGRAM**

Test:U:11.96V I:0.1256A P:1.451W PF:0.9661 Lamp Flux:235x1 lm		
NAME: 490085-3000K AXLE	TYPE:490085-3000K AXLE	WEIGHT:
SPEC.:	DIM.:	SERIAL No.:
MFR.:	SUR.:	PROTECTION ANGLE:

pcc	80%			70%			50%			30%			10%			0
pw	50%	30%	10%	50%	30%	10%	50%	30%	10%	50%	30%	10%	50%	30%	10%	0
pfc	20%			20%			20%			20%			20%			0
RCR	RCR:Room Cavity Ratio						Coefficients of Utilization(CU)									
0.0	.57	.57	.57	.55	.55	.55	.53	.53	.53	.51	.51	.51	.49	.49	.49	.48
1.0	.51	.49	.47	.50	.48	.47	.48	.46	.45	.46	.45	.44	.44	.43	.42	.42
2.0	.45	.42	.40	.44	.41	.39	.42	.40	.38	.41	.39	.37	.39	.38	.37	.36
3.0	.40	.37	.34	.39	.36	.33	.38	.35	.33	.37	.34	.32	.35	.33	.32	.31
4.0	.36	.32	.29	.35	.32	.29	.34	.31	.29	.33	.30	.28	.32	.30	.28	.27
5.0	.32	.28	.26	.32	.28	.25	.31	.28	.25	.30	.27	.25	.29	.27	.25	.24
6.0	.29	.25	.23	.29	.25	.23	.28	.25	.22	.27	.24	.22	.27	.24	.22	.21
7.0	.27	.23	.20	.27	.23	.20	.26	.22	.20	.25	.22	.20	.25	.22	.20	.19
8.0	.25	.21	.18	.24	.21	.18	.24	.20	.18	.23	.20	.18	.23	.20	.18	.17
9.0	.23	.19	.17	.23	.19	.17	.22	.19	.17	.22	.19	.16	.21	.18	.16	.16
10.0	.21	.18	.15	.21	.18	.15	.20	.17	.15	.20	.17	.15	.20	.17	.15	.14



C Range: 0 - 360DEG  
 C Interval: 5.0DEG  
 Test Speed: HIGH  
 Temperature:20DEG  
 Operators:Y  
 Test Date:2024-03-15

γ Range: 0 - 90DEG  
 γ Interval: 0.5DEG  
 Test System:EVERFINE GO-2000B\_V1 SYSTEM V2.0.291  
 Humidity:65.0%  
 Test Distance:8.750m [K=1.0000]  
 Remarks:

**WEC AND CCEC**

Test:U:11.96V I:0.1256A P:1.451W PF:0.9661 Lamp Flux:235x1 lm		
NAME: 490085-3000K AXLE	TYPE:490085-3000K AXLE	WEIGHT:
SPEC.:	DIM.:	SERIAL No.:
MFR.:	SUR.:	PROTECTION ANGLE:

ρcc	80%			70%			50%			30%			10%			0
ρw	50%	30%	10%	50%	30%	10%	50%	30%	10%	50%	30%	10%	50%	30%	10%	0
ρfc	20%			20%			20%			20%			20%			0
RCR	RCR:Room Cavity Ratio						Wall Exitance Coefficients(WEC)									
0.0																
1.0	.125	.071	.023	.122	.069	.022	.115	.066	.021	.110	.063	.020	.105	.061	.020	
2.0	.121	.067	.020	.118	.065	.020	.113	.063	.020	.108	.061	.019	.103	.059	.018	
3.0	.114	.061	.018	.112	.060	.018	.107	.058	.018	.103	.056	.017	.099	.055	.017	
4.0	.107	.056	.016	.105	.055	.016	.101	.053	.016	.097	.052	.016	.093	.051	.015	
5.0	.100	.051	.015	.098	.050	.015	.094	.049	.014	.091	.048	.014	.088	.047	.014	
6.0	.094	.047	.013	.092	.046	.013	.089	.045	.013	.086	.044	.013	.083	.043	.013	
7.0	.088	.043	.012	.086	.043	.012	.083	.042	.012	.081	.041	.012	.078	.040	.012	
8.0	.083	.040	.011	.081	.040	.011	.078	.039	.011	.076	.038	.011	.074	.038	.011	
9.0	.078	.038	.011	.076	.037	.010	.074	.037	.010	.072	.036	.010	.070	.035	.010	
10.0	.073	.035	.010	.072	.035	.010	.070	.034	.010	.068	.034	.010	.066	.033	.010	

ρcc	80%			70%			50%			30%			10%			0
ρw	50%	30%	10%	50%	30%	10%	50%	30%	10%	50%	30%	10%	50%	30%	10%	0
ρfc	20%			20%			20%			20%			20%			0
RCR	RCR:Room Cavity Ratio						Ceiling Cavity Exitance Coefficients(CCEC)									
0.0	.091	.091	.091	.078	.078	.078	.053	.053	.053	.030	.030	.030	.010	.010	.010	
1.0	.084	.075	.066	.072	.064	.057	.049	.044	.039	.028	.025	.023	.009	.008	.007	
2.0	.080	.063	.049	.068	.054	.042	.047	.037	.029	.027	.022	.017	.009	.007	.006	
3.0	.076	.054	.037	.065	.047	.032	.045	.033	.023	.026	.019	.013	.008	.006	.004	
4.0	.072	.048	.030	.062	.041	.026	.042	.029	.018	.025	.017	.011	.008	.005	.004	
5.0	.068	.043	.024	.059	.037	.021	.040	.026	.015	.023	.015	.009	.008	.005	.003	
6.0	.065	.039	.020	.056	.034	.017	.039	.023	.012	.022	.014	.007	.007	.005	.002	
7.0	.062	.035	.017	.053	.031	.015	.037	.021	.010	.021	.013	.006	.007	.004	.002	
8.0	.059	.033	.014	.051	.028	.013	.035	.020	.009	.020	.012	.005	.007	.004	.002	
9.0	.056	.030	.013	.048	.026	.011	.034	.018	.008	.020	.011	.005	.006	.004	.002	
10.0	.054	.028	.011	.046	.024	.010	.032	.017	.007	.019	.010	.004	.006	.003	.001	

C Range: 0 - 360DEG  
 C Interval: 5.0DEG  
 Test Speed: HIGH  
 Temperature:20DEG  
 Operators:Y  
 Test Date:2024-03-15

γ Range: 0 - 90DEG  
 γ Interval: 0.5DEG  
 Test System:EVERFINE GO-2000B\_V1 SYSTEM V2.0.291  
 Humidity:65.0%  
 Test Distance:8.750m [K=1.0000]  
 Remarks:

**UGR(Unified Glare Rating) Table**

Test:U:11.96V I:0.1256A P:1.451W PF:0.9661 Lamp Flux:235x1 lm										
NAME: 490085-3000K AXLE					TYPE:490085-3000K AXLE			WEIGHT:		
SPEC.:					DIM.:			SERIAL No.:		
MFR.:					SUR.:			PROTECTION ANGLE:		
ceiling/cavity	0.7	0.7	0.5	0.5	0.3	0.7	0.7	0.5	0.5	0.3
walls	0.5	0.3	0.5	0.3	0.3	0.5	0.3	0.5	0.3	0.3
working plane	0.2	0.2	0.2	0.2	0.2	0.2	0.2	0.2	0.2	0.2
Room dimensions	Viewed crosswise					Viewed endwise				
x = 2H y = 2H	2.7	4.1	2.9	4.3	4.5	-35.6	-34.2	-35.4	-34.0	-33.8
3H	3.5	4.8	3.8	5.0	5.2	-35.8	-34.6	-35.5	-34.3	-34.1
4H	3.6	4.8	3.9	5.1	5.3	-35.9	-34.7	-35.6	-34.5	-34.2
6H	3.6	4.7	3.9	5.0	5.3	-36.0	-34.9	-35.7	-34.6	-34.4
8H	3.5	4.6	3.9	4.9	5.2	-36.1	-35.0	-35.8	-34.7	-34.4
12H	3.5	4.5	3.8	4.8	5.1	-36.1	-35.1	-35.8	-34.8	-34.5
4H 2H	2.4	3.6	2.7	3.8	4.1	-30.7	-29.5	-30.4	-29.3	-29.0
3H	3.2	4.2	3.5	4.5	4.8	-30.9	-29.9	-30.6	-29.6	-29.3
4H	3.3	4.3	3.7	4.6	4.9	-31.0	-30.1	-30.7	-29.8	-29.4
6H	3.3	4.1	3.7	4.5	4.8	-31.1	-30.3	-30.7	-29.9	-29.6
8H	3.2	4.0	3.7	4.4	4.8	-31.2	-30.4	-30.8	-30.0	-29.6
12H	3.2	3.9	3.6	4.3	4.7	-31.2	-30.5	-30.8	-30.1	-29.7
8H 4H	3.2	3.9	3.6	4.3	4.7	-31.2	-30.4	-30.7	-30.0	-29.6
6H	3.2	3.8	3.6	4.2	4.6	-31.2	-30.6	-30.8	-30.2	-29.8
8H	3.1	3.7	3.6	4.1	4.6	-31.3	-30.7	-30.8	-30.3	-29.8
12H	3.1	3.6	3.6	4.0	4.5	-31.3	-30.8	-30.8	-30.4	-29.9
12H 4H	3.1	3.8	3.5	4.2	4.6	-31.2	-30.5	-30.8	-30.1	-29.7
6H	3.1	3.7	3.6	4.1	4.5	-31.3	-30.7	-30.8	-30.3	-29.8
8H	3.1	3.6	3.6	4.0	4.5	-31.3	-30.8	-30.8	-30.4	-29.9
Variations with the observer position at spacings:										
S = 1.0H	+ 1.8 / - 6.1					+ 2.5 / - 1.5				
1.5H	+ 3.0 / -28.4					+ 4.0 / - 1.5				
2.0H	+ 4.0 / -50.4					+ 6.1 / - 1.5				

CIE Pub.117 Corrected 100.0 lm Total Lamp Luminous Flux.(8log(F/F0) = -8.0)

C Range: 0 - 360DEG  
C Interval: 5.0DEG  
Test Speed: HIGH  
Temperature:20DEG  
Operators:Y  
Test Date:2024-03-15

γ Range: 0 - 90DEG  
γ Interval: 0.5DEG  
Test System:EVERFINE GO-2000B\_V1 SYSTEM V2.0.291  
Humidity:65.0%  
Test Distance:8.750m [K=1.0000]  
Remarks:

**UTILIZATION FACTORS TABLE**

Test:U:11.96V I:0.1256A P:1.451W PF:0.9661 Lamp Flux:235x1 lm		
NAME: 490085-3000K AXLE	TYPE:490085-3000K AXLE	WEIGHT:
SPEC.:	DIM.:	SERIAL No.:
MFR.:	SUR.:	PROTECTION ANGLE:

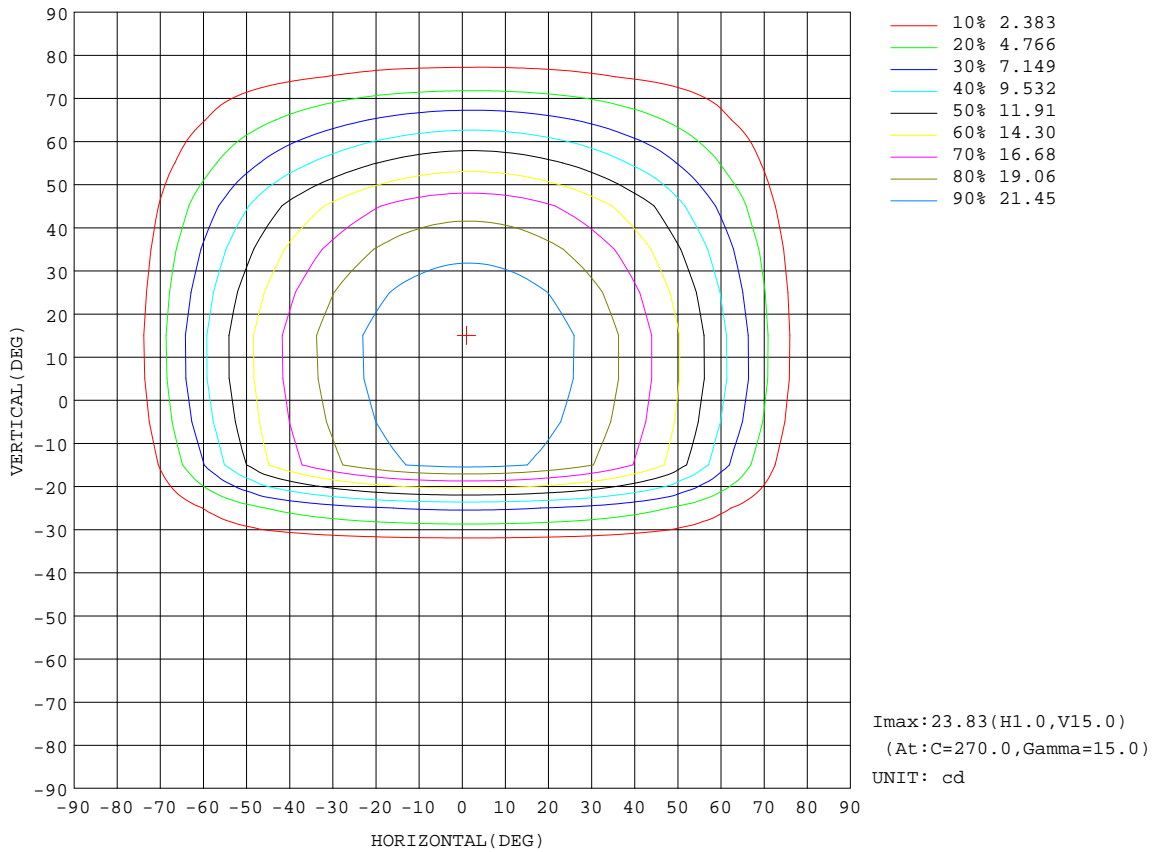
REFLECTANCE										
Ceiling	0.8	0.8	0.8	0.7	0.7	0.7	0.5	0.5	0.5	0
Walls	0.7	0.5	0.3	0.7	0.5	0.3	0.7	0.5	0.3	0
Working plane	0.2	0.2	0.2	0.2	0.2	0.2	0.2	0.2	0.2	0
ROOM INDEX	UTILIZATION FACTORS(PERCENT) $k(RI) \times RCR = 5$									
k = 0.60	30	25	22	30	25	22	29	25	22	19
0.80	35	30	27	34	30	27	34	29	26	24
1.00	39	34	31	38	34	31	37	34	31	28
1.25	42	38	35	41	37	34	40	37	34	31
1.50	44	40	37	43	40	37	42	39	36	33
2.00	47	44	41	46	43	41	45	42	40	36
2.50	49	46	43	48	45	43	46	44	42	38
3.00	50	47	45	49	47	45	47	45	44	40
4.00	52	49	48	51	49	47	49	47	46	42
5.00	53	51	49	52	50	48	50	48	47	43
ROOM INDEX	UF(total)									Direct
According to DIN EN 13032-2 2004			Suspended				SHRNOM = 1.25			

C Range: 0 - 360DEG  
 C Interval: 5.0DEG  
 Test Speed: HIGH  
 Temperature:20DEG  
 Operators:Y  
 Test Date:2024-03-15

$\gamma$  Range: 0 - 90DEG  
 $\gamma$  Interval: 0.5DEG  
 Test System:EVERFINE GO-2000B\_V1 SYSTEM V2.0.291  
 Humidity:65.0%  
 Test Distance:8.750m [K=1.0000]  
 Remarks:

**ISOCANDELA DIAGRAM**

Test:U:11.96V I:0.1256A P:1.451W PF:0.9661 Lamp Flux:235x1 lm		
NAME: 490085-3000K AXLE	TYPE:490085-3000K AXLE	WEIGHT:
SPEC.:	DIM.:	SERIAL No.:
MFR.:	SUR.:	PROTECTION ANGLE:

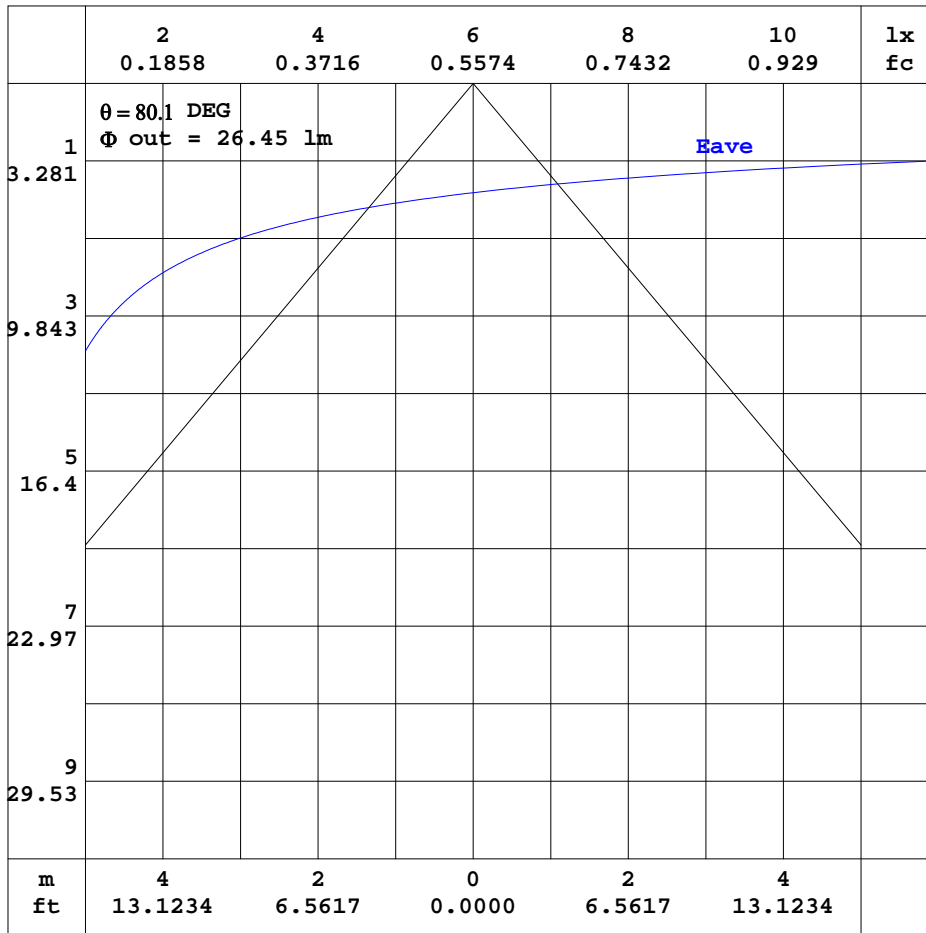


C Range: 0 - 360DEG  
 C Interval: 5.0DEG  
 Test Speed: HIGH  
 Temperature:20DEG  
 Operators:Y  
 Test Date:2024-03-15

$\gamma$  Range: 0 - 90DEG  
 $\gamma$  Interval: 0.5DEG  
 Test System:EVERFINE GO-2000B\_V1 SYSTEM V2.0.291  
 Humidity:65.0%  
 Test Distance:8.750m [K=1.0000]  
 Remarks:

**AAI CURVES**

Test:U:11.96V I:0.1256A P:1.451W PF:0.9661 Lamp Flux:235x1 lm		
NAME: 490085-3000K AXLE	TYPE:490085-3000K AXLE	WEIGHT:
SPEC.:	DIM.:	SERIAL No.:
MFR.:	SUR.:	PROTECTION ANGLE:



Note:The Curves indicate the illuminated area and the average illumination when the luminaire is at different distance.

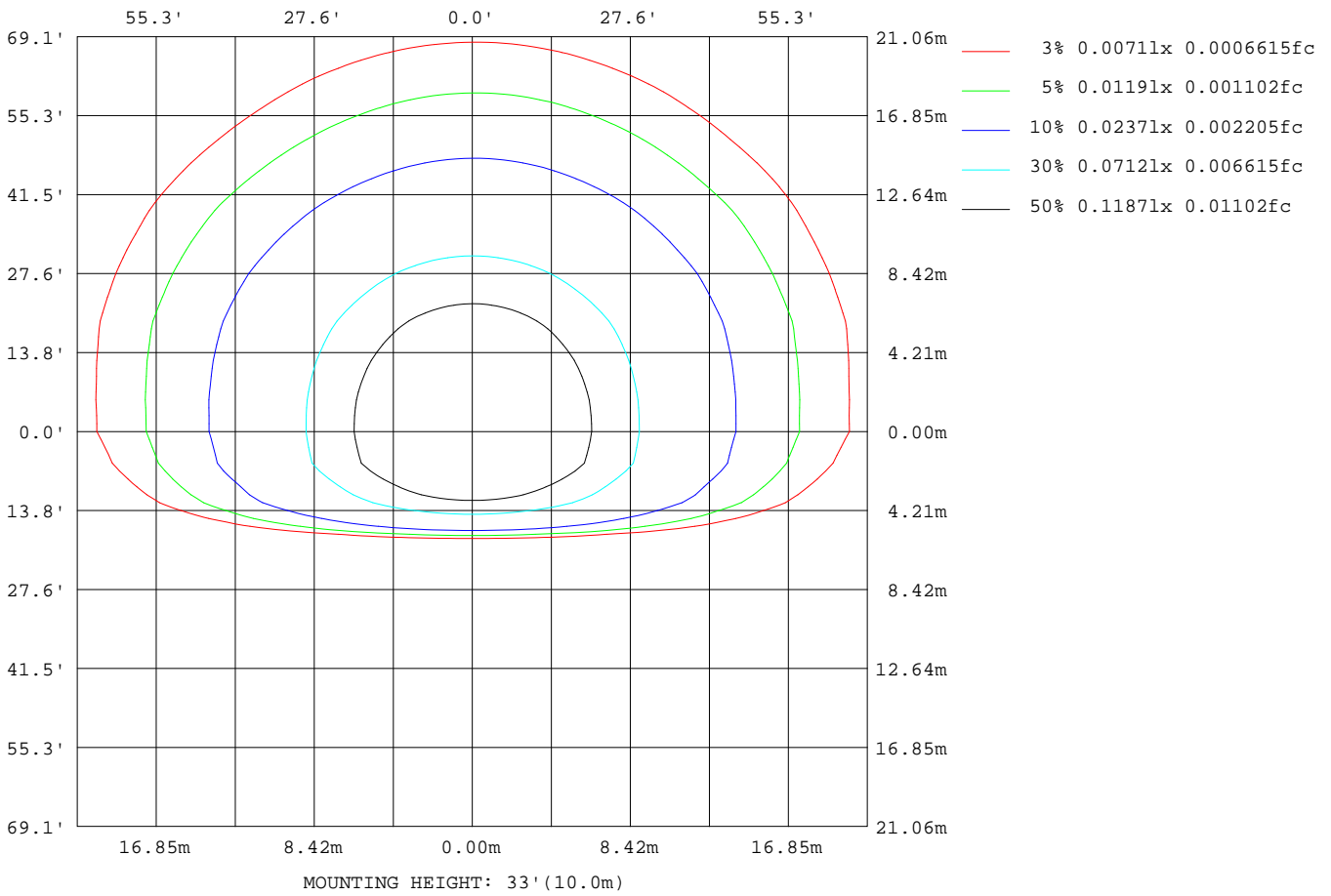
C Range: 0 - 360DEG  
 C Interval: 5.0DEG  
 Test Speed: HIGH  
 Temperature:20DEG  
 Operators:Y  
 Test Date:2024-03-15

$\gamma$  Range: 0 - 90DEG  
 $\gamma$  Interval: 0.5DEG  
 Test System:EVERFINE GO-2000B\_V1 SYSTEM V2.0.291  
 Humidity:65.0%  
 Test Distance:8.750m [K=1.0000]  
 Remarks:



**ISOLUX DIAGRAM**

Test:U:11.96V I:0.1256A P:1.451W PF:0.9661 Lamp Flux:235x1 lm		
NAME: 490085-3000K AXLE	TYPE:490085-3000K AXLE	WEIGHT:
SPEC.:	DIM.:	SERIAL No.:
MFR.:	SUR.:	PROTECTION ANGLE:



C Range: 0 - 360DEG  
 C Interval: 5.0DEG  
 Test Speed: HIGH  
 Temperature:20DEG  
 Operators:Y  
 Test Date:2024-03-15

γ Range: 0 - 90DEG  
 γ Interval: 0.5DEG  
 Test System:EVERFINE GO-2000B\_V1 SYSTEM V2.0.291  
 Humidity:65.0%  
 Test Distance:8.750m [K=1.0000]  
 Remarks:

**LED Avg.L Report**

Test:U:11.96V I:0.1256A P:1.451W PF:0.9661 Lamp Flux:235x1 lm		
NAME: 490085-3000K AXLE	TYPE:490085-3000K AXLE	WEIGHT:
SPEC.:	DIM.:	SERIAL No.:
MFR.:	SUR.:	PROTECTION ANGLE:

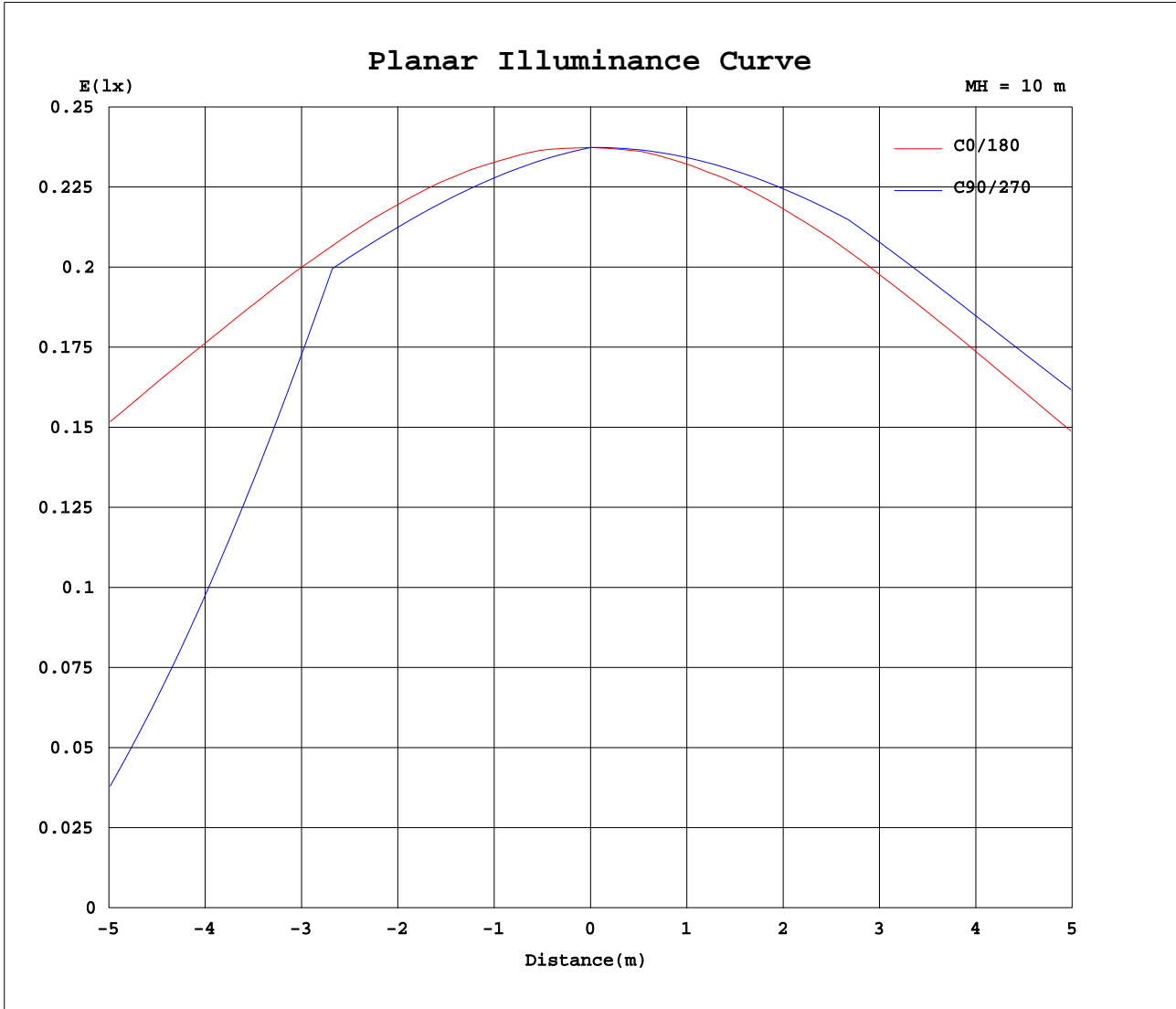
AvgL	cd/m2
L_0~180(65)av	86
L_0~180(75)av	43
L_0~180(85)av	0
L_90~270(65)av	49
L_90~270(75)av	29
L_90~270(85)av	0
L_45(65)av	49
L_45(75)av	36
L_45(85)av	0

Standard: GB/T 29293-2012

C Range: 0 - 360DEG  
C Interval: 5.0DEG  
Test Speed: HIGH  
Temperature:20DEG  
Operators:Y  
Test Date:2024-03-15

γ Range: 0 - 90DEG  
γ Interval: 0.5DEG  
Test System:EVERFINE GO-2000B\_V1 SYSTEM V2.0.291  
Humidity:65.0%  
Test Distance:8.750m [K=1.0000]  
Remarks:

Planar Illuminance Curve



C Range: 0 - 360DEG  
C Interval: 5.0DEG  
Test Speed: HIGH  
Temperature: 20DEG  
Operators: Y  
Test Date: 2024-03-15

$\gamma$  Range: 0 - 90DEG  
 $\gamma$  Interval: 0.5DEG  
Test System: EVERFINE GO-2000B\_V1 SYSTEM V2.0.291  
Humidity: 65.0%  
Test Distance: 8.750m [K=1.0000]  
Remarks:

LUMINOUS DISTRIBUTION INTENSITY DATA

Test:U:11.96V I:0.1256A P:1.451W PF:0.9661 Lamp Flux:235x1 lm		
NAME: 490085-3000K AXLE	TYPE:490085-3000K AXLE	WEIGHT:
SPEC.:	DIM.:	SERIAL No.:
MFR.:	SUR.:	PROTECTION ANGLE:

Table--1

UNIT: cd

C(DEG) γ (DEG)	0	5	10	15	20	25	30	35	40	45	50	55	60	65	70	75	80	85	90
0	23.7	23.7	23.7	23.7	23.7	23.7	23.7	23.7	23.7	23.7	23.7	23.7	23.7	23.7	23.7	23.7	23.7	23.7	23.7
5	23.7	23.6	23.6	23.5	23.5	23.5	23.4	23.4	23.4	23.3	23.3	23.3	23.3	23.3	23.2	23.2	23.2	23.2	23.2
10	23.4	23.3	23.2	23.1	23.1	23.0	23.0	22.9	22.9	22.8	22.8	22.8	22.7	22.7	22.7	22.7	22.7	22.7	22.7
15	22.9	22.8	22.7	22.6	22.5	22.4	22.4	22.3	22.3	22.2	22.2	22.2	22.2	22.2	22.2	22.2	22.2	22.2	22.1
20	22.3	22.1	22.0	21.9	21.8	21.7	21.6	21.6	21.6	21.6	20.8	19.4	18.2	17.2	16.4	15.7	15.2	14.9	14.8
25	21.5	21.3	21.1	21.0	20.9	20.8	20.8	20.8	18.6	16.6	14.7	13.1	11.7	10.4	9.38	8.56	7.98	7.63	7.50
30	20.5	20.2	20.0	19.9	19.8	19.8	18.5	15.7	13.2	10.8	8.69	6.75	5.05	3.59	2.37	1.42	0.74	0.32	0.18
35	19.3	19.0	18.8	18.6	18.6	16.9	13.7	10.6	7.73	5.06	2.61	0.40	0.16	0.15	0.14	0.13	0.13	0.12	0.12
40	17.8	17.5	17.2	17.1	16.1	12.4	8.83	5.46	2.28	0.17	0.14	0.12	0.11	0.09	0.08	0.07	0.07	0.06	0.06
45	16.1	15.8	15.5	15.5	11.8	7.86	4.03	0.35	0.14	0.11	0.09	0.07	0.05	0.03	0.02	0.01	0.01	0.00	0.00
50	14.3	13.7	13.5	11.9	7.58	3.41	0.15	0.11	0.08	0.05	0.03	0.01	0.00	0.00	0.00	0.00	0.00	0.00	0.00
55	12.2	11.4	11.1	7.57	3.39	0.13	0.09	0.06	0.03	0.00	0.00	0.00	0.00	0.00	0.00	0.00	0.00	0.00	0.00
60	9.97	8.90	7.56	3.76	0.11	0.08	0.04	0.00	0.00	0.00	0.00	0.00	0.00	0.00	0.00	0.00	0.00	0.00	0.00
65	7.63	6.31	4.07	0.56	0.06	0.02	0.00	0.00	0.00	0.00	0.00	0.00	0.00	0.00	0.00	0.00	0.00	0.00	0.00
70	4.94	3.65	1.29	0.05	0.01	0.00	0.00	0.00	0.00	0.00	0.00	0.00	0.00	0.00	0.00	0.00	0.00	0.00	0.00
75	2.48	1.29	0.02	0.00	0.00	0.00	0.00	0.00	0.00	0.00	0.00	0.00	0.00	0.00	0.00	0.00	0.00	0.00	0.00
80	0.80	0.10	0.00	0.00	0.00	0.00	0.00	0.00	0.00	0.00	0.00	0.00	0.00	0.00	0.00	0.00	0.00	0.00	0.00
85	0.01	0.00	0.00	0.00	0.00	0.00	0.00	0.00	0.00	0.00	0.00	0.00	0.00	0.00	0.00	0.00	0.00	0.00	0.00
90	0.00	0.00	0.00	0.00	0.00	0.00	0.00	0.00	0.00	0.00	0.00	0.00	0.00	0.00	0.00	0.00	0.00	0.00	0.00

C Range: 0 - 360DEG  
C Interval: 5.0DEG  
Test Speed: HIGH  
Temperature:20DEG  
Operators:Y  
Test Date:2024-03-15

γ Range: 0 - 90DEG  
γ Interval: 0.5DEG  
Test System:EVERFINE GO-2000B\_V1 SYSTEM V2.0.291  
Humidity:65.0%  
Test Distance:8.750m [K=1.0000]  
Remarks:





**LUMINOUS DISTRIBUTION INTENSITY DATA**

Test:U:11.96V I:0.1256A P:1.451W PF:0.9661 Lamp Flux:235x1 lm		
NAME: 490085-3000K AXLE	TYPE:490085-3000K AXLE	WEIGHT:
SPEC.:	DIM.:	SERIAL No.:
MFR.:	SUR.:	PROTECTION ANGLE:

Table--4

UNIT: cd

C( DEG) γ (DEG)	285	290	295	300	305	310	315	320	325	330	335	340	345	350	355				
0	23.7	23.7	23.7	23.7	23.7	23.7	23.7	23.7	23.7	23.7	23.7	23.7	23.7	23.7	23.7				
5	23.8	23.8	23.8	23.8	23.8	23.8	23.7	23.7	23.7	23.7	23.7	23.7	23.7	23.7	23.7				
10	23.8	23.8	23.7	23.7	23.7	23.6	23.6	23.6	23.5	23.5	23.5	23.5	23.4	23.4	23.4				
15	23.8	23.7	23.7	23.6	23.6	23.5	23.4	23.3	23.3	23.2	23.1	23.1	23.0	23.0	22.9				
20	23.3	23.3	23.2	23.2	23.2	23.2	23.1	23.0	22.9	22.7	22.6	22.5	22.4	22.4	22.3				
25	22.7	22.7	22.6	22.6	22.5	22.4	22.4	22.4	22.3	22.1	22.0	21.8	21.7	21.6	21.5				
30	22.1	22.1	22.0	21.9	21.7	21.6	21.5	21.4	21.3	21.3	21.2	20.9	20.7	20.6	20.5				
35	20.9	20.9	20.9	20.9	21.0	20.8	20.6	20.4	20.3	20.1	20.1	19.9	19.6	19.4	19.3				
40	19.5	19.5	19.4	19.4	19.4	19.4	19.5	19.3	19.1	18.8	18.7	18.6	18.3	18.0	17.9				
45	18.1	18.0	17.9	17.8	17.8	17.7	17.7	17.7	17.8	17.4	17.1	16.9	16.8	16.4	16.2				
50	15.8	15.9	16.0	16.1	16.1	16.0	15.8	15.8	15.7	15.7	15.4	15.1	15.0	14.7	14.4				
55	13.4	13.4	13.5	13.5	13.6	13.7	13.9	13.8	13.7	13.6	13.5	13.2	12.9	12.7	12.3				
60	11.0	10.9	10.9	11.0	11.0	11.1	11.2	11.4	11.6	11.3	11.1	11.1	10.7	10.4	10.1				
65	8.39	8.39	8.42	8.44	8.43	8.44	8.54	8.69	8.75	8.78	8.67	8.53	8.47	8.02	7.75				
70	5.80	5.84	5.91	5.96	6.00	6.01	6.06	6.06	6.10	6.14	6.19	6.15	5.96	5.76	5.30				
75	3.22	3.32	3.43	3.53	3.64	3.73	3.83	3.89	3.90	3.85	3.70	3.75	3.55	3.31	2.82				
80	0.20	0.36	0.56	0.78	1.03	1.30	1.60	1.87	1.99	2.01	1.90	1.76	1.57	1.35	1.06				
85	0.00	0.00	0.00	0.00	0.00	0.00	0.00	0.00	0.00	0.00	0.28	0.47	0.45	0.31	0.14				
90	0.00	0.00	0.00	0.00	0.00	0.00	0.00	0.00	0.00	0.00	0.00	0.00	0.00	0.00	0.00				

C Range: 0 - 360DEG  
C Interval: 5.0DEG  
Test Speed: HIGH  
Temperature:20DEG  
Operators:Y  
Test Date:2024-03-15

γ Range: 0 - 90DEG  
γ Interval: 0.5DEG  
Test System:EVERFINE GO-2000B\_V1 SYSTEM V2.0.291  
Humidity:65.0%  
Test Distance:8.750m [K=1.0000]  
Remarks: