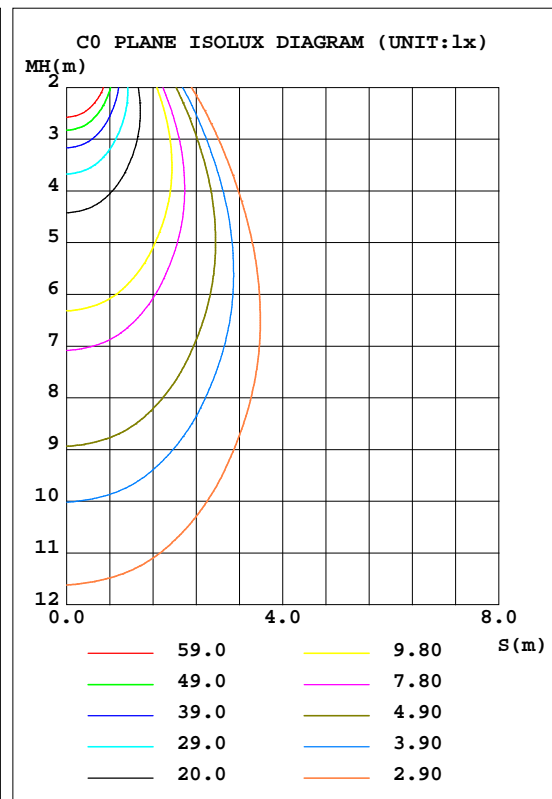
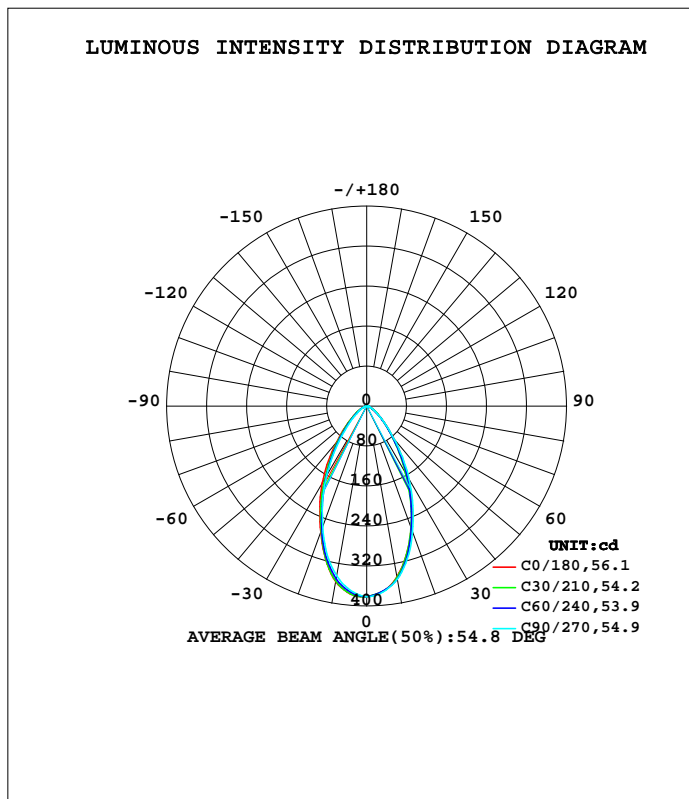


LUMINAIRE PHOTOMETRIC TEST REPORT

Test:U:11.937V I:0.4983A P:4.2222W PF:0.7099 Freq:60.00Hz Lamp Flux:378.49lx1 lm		
NAME: 486746-MR16-4W-2700K-60°	TYPE:	WEIGHT:
SPEC.:	DIM.:	SERIAL No.:
MFR.:	SUR.:35mm	Shielding Angle:

DATA OF LAMP		PHOTOMETRIC DATA			
MODEL		Imax(cd)	381.8	S/MH(C0/180)	0.84
NOMINAL POWER(W)	--	LOR(%)	100.0	S/MH(C90/270)	0.80
RATED VOLTAGE(V)	--	TOTAL FLUX(lm)	378.49	η UP,DN(C0-180)	0.0,50.3
NOMINAL FLUX(lm)	378.491	CIE CLASS	DIRECT	η UP,DN(C180-360)	0.0,49.7
LAMPS INSIDE	1	η up(%)	0.0	CIBSE SHR NOM	0.75
TEST VOLTAGE(V)	--	η down(%)	100.0	CIBSE SHR MAX	0.85



C Range: 0 - 360DEG
 C Interval: 15.0DEG
 Test Speed: HIGH
 Temperature:25.3DEG
 Operators:DAMIN
 Test Date:2022-04-09

γ Range: 0 - 90DEG
 γ Interval: 1.0DEG
 Test System:EVERFINE GO-3000H_V1 SYSTEM V2.00.411
 Humidity:65.0%
 Test Distance:9.000m [K=1.0000]
 Remarks:

ZONAL FLUX DIAGRAM

ZONAL FLUX DIAGRAM:

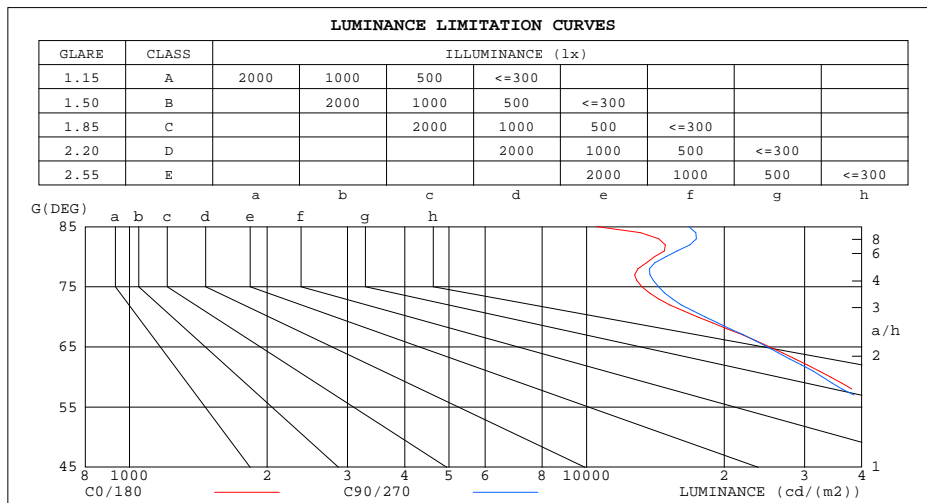
γ	C0	C45	C90	C135	C180	C225	C270	C315	γ	Φ zone	Φ total	\$lum,lamp
10	347.4	351.1	351.8	355.8	356.8	353.2	345.4	347.7	0- 10	34.96	34.96	9.24,9.24
20	261.0	259.4	268.2	267.3	269.2	264.3	257.3	257.3	10- 20	86.59	121.5	32.1,32.1
30	167.0	157.2	171.3	165.0	178.0	162.5	160.3	153.8	20- 30	97.18	218.7	57.8,57.8
40	83.69	79.04	85.51	87.83	93.45	84.91	77.44	79.28	30- 40	75.40	294.1	77.7,77.7
50	37.61	36.88	37.50	41.11	42.56	40.17	32.81	37.29	40- 50	44.69	338.8	89.5,89.5
60	16.65	17.30	16.46	19.36	18.94	18.72	14.68	17.44	50- 60	23.50	362.3	95.7,95.7
70	5.820	6.248	6.226	7.014	6.629	6.693	5.224	6.328	60- 70	11.04	373.4	98.6,98.6
80	2.382	2.383	2.597	2.471	2.534	2.357	2.177	2.416	70- 80	3.966	377.3	99.7,99.7
90	0	0	0	0	0.0145	0.0148	0.0134	0.0166	80- 90	1.152	378.5	100,100
100									90-100			
110									100-110			
120									110-120			
130									120-130			
140									130-140			
150									140-150			
160									150-160			
170									160-170			
180									170-180			
DEG	LUMINOUS INTENSITY:cd									UNIT:lm		

C Range: 0 - 360DEG
 C Interval: 15.0DEG
 Test Speed: HIGH
 Temperature:25.3DEG
 Operators:DAMIN
 Test Date:2022-04-09

γ Range: 0 - 90DEG
 γ Interval: 1.0DEG
 Test System:EVERFINE GO-3000H_V1 SYSTEM V2.00.411
 Humidity:65.0%
 Test Distance:9.000m [K=1.0000]
 Remarks:

LUMINANCE LIMITATION CURVES

Test:U:11.937V I:0.4983A P:4.2222W PF:0.7099 Freq:60.00Hz Lamp Flux:378.491x1 lm		
NAME: 486746-MR16-4W-2700K-60°	TYPE:	WEIGHT:
SPEC.:	DIM.:	SERIAL No.:
MFR.:	SUR.:35mm	Shielding Angle:



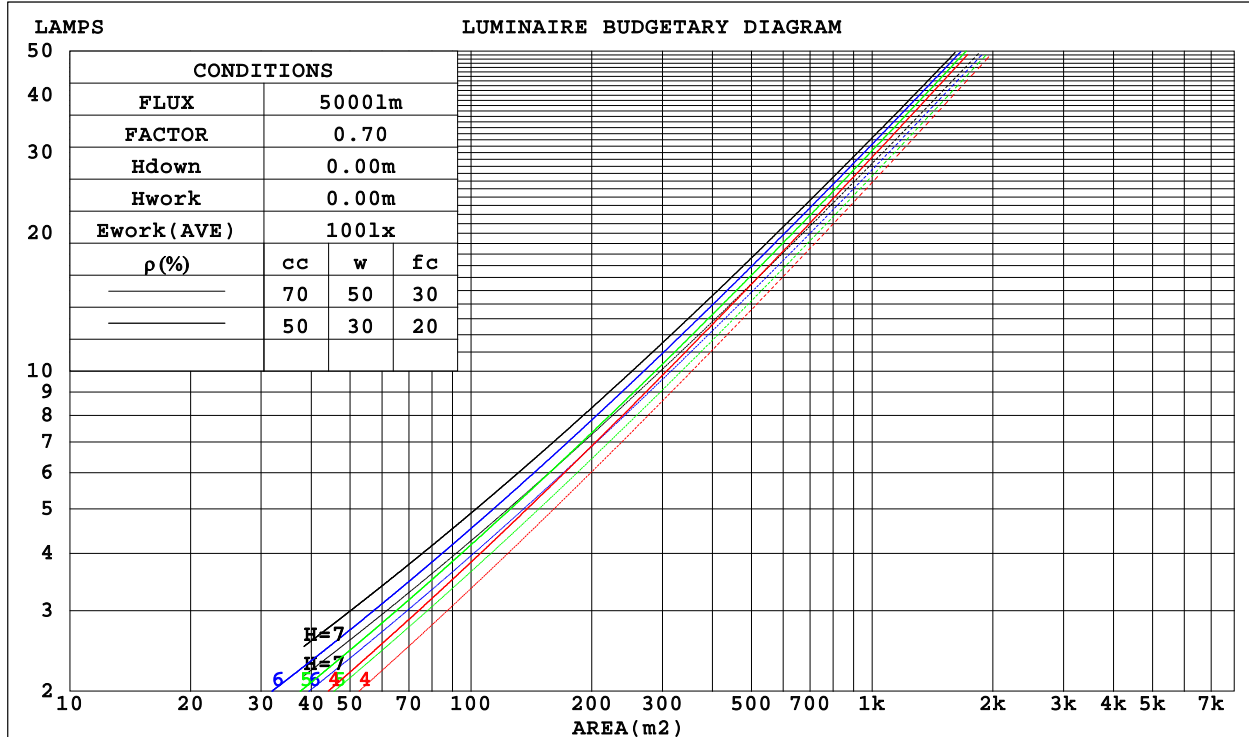
C Range: 0 - 360DEG
 C Interval: 15.0DEG
 Test Speed: HIGH
 Temperature:25.3DEG
 Operators:DAMIN
 Test Date:2022-04-09

γ Range: 0 - 90DEG
 γ Interval: 1.0DEG
 Test System:EVERFINE GO-3000H_V1 SYSTEM V2.00.411
 Humidity:65.0%
 Test Distance:9.000m [K=1.0000]
 Remarks:

CU AND LUMINAIRE BUDGETARY ESTIMATE DIAGRAM

Test:U:11.937V I:0.4983A P:4.2222W PF:0.7099 Freq:60.00Hz Lamp Flux:378.491x1 lm		
NAME: 486746-MR16-4W-2700K-60°	TYPE:	WEIGHT:
SPEC.:	DIM.:	SERIAL No.:
MFR.:	SUR.:35mm	Shielding Angle:

ρ _{cc}	80%			70%			50%			30%			10%			0
ρ _w	50%	30%	10%	50%	30%	10%	50%	30%	10%	50%	30%	10%	50%	30%	10%	0
ρ _{fc}	20%			20%			20%			20%			20%			0
RCR	RCR:Room Cavity Ratio															
	Coefficients of Utilization(CU)															
0.0	1.19	1.19	1.19	1.16	1.16	1.16	1.11	1.11	1.11	1.06	1.06	1.06	1.02	1.02	1.02	1.00
1.0	1.09	1.06	1.04	1.07	1.04	1.02	1.03	1.01	.99	.99	.98	.96	.96	.94	.93	.91
2.0	1.00	.95	.91	.98	.94	.90	.95	.91	.88	.92	.89	.86	.89	.87	.85	.83
3.0	.92	.86	.82	.91	.85	.81	.88	.83	.80	.85	.81	.78	.83	.80	.77	.75
4.0	.85	.78	.74	.84	.78	.73	.81	.76	.72	.79	.75	.71	.77	.74	.70	.69
5.0	.78	.72	.67	.77	.71	.67	.76	.70	.66	.74	.69	.65	.72	.68	.65	.63
6.0	.73	.66	.61	.72	.66	.61	.70	.65	.61	.69	.64	.60	.68	.63	.60	.58
7.0	.68	.61	.56	.67	.61	.56	.66	.60	.56	.65	.60	.56	.63	.59	.55	.54
8.0	.64	.57	.52	.63	.57	.52	.62	.56	.52	.61	.56	.52	.60	.55	.51	.50
9.0	.60	.53	.49	.59	.53	.49	.58	.52	.48	.57	.52	.48	.56	.52	.48	.47
10.0	.56	.50	.46	.56	.50	.45	.55	.49	.45	.54	.49	.45	.53	.48	.45	.44



C Range: 0 - 360DEG
 C Interval: 15.0DEG
 Test Speed: HIGH
 Temperature:25.3DEG
 Operators:DAMIN
 Test Date:2022-04-09

γ Range: 0 - 90DEG
 γ Interval: 1.0DEG
 Test System:EVERFINE GO-3000H_V1 SYSTEM V2.00.411
 Humidity:65.0%
 Test Distance:9.000m [K=1.0000]
 Remarks:

WEC AND CCEC

Test:U:11.937V I:0.4983A P:4.2222W PF:0.7099 Freq:60.00Hz Lamp Flux:378.491x1 lm		
NAME: 486746-MR16-4W-2700K-60°	TYPE:	WEIGHT:
SPEC.:	DIM.:	SERIAL No.:
MFR.:	SUR.:35mm	Shielding Angle:

pcc	80%			70%			50%			30%			10%			0
pw	50%	30%	10%	50%	30%	10%	50%	30%	10%	50%	30%	10%	50%	30%	10%	0
pfc	20%			20%			20%			20%			20%			0
RCR	RCR:Room Cavity Ratio						Wall Exitance Coefficients(WEC)									
0.0																
1.0	.207	.118	.037	.200	.114	.036	.188	.108	.034	.176	.101	.033	.165	.096	.031	
2.0	.199	.109	.034	.194	.107	.033	.183	.102	.032	.173	.097	.030	.163	.092	.029	
3.0	.189	.101	.030	.184	.099	.030	.175	.095	.029	.166	.091	.028	.158	.088	.027	
4.0	.179	.093	.027	.175	.092	.027	.167	.088	.026	.159	.085	.026	.152	.083	.025	
5.0	.170	.086	.025	.166	.085	.025	.159	.083	.024	.152	.080	.024	.146	.078	.023	
6.0	.161	.081	.023	.157	.079	.023	.151	.077	.023	.145	.075	.022	.140	.073	.022	
7.0	.152	.075	.021	.149	.074	.021	.144	.073	.021	.138	.071	.021	.134	.069	.020	
8.0	.145	.071	.020	.142	.070	.020	.137	.068	.020	.132	.067	.019	.128	.066	.019	
9.0	.138	.067	.019	.135	.066	.019	.131	.065	.018	.127	.063	.018	.123	.062	.018	
10.0	.131	.063	.017	.129	.062	.017	.125	.061	.017	.121	.060	.017	.118	.059	.017	

pcc	80%			70%			50%			30%			10%			0
pw	50%	30%	10%	50%	30%	10%	50%	30%	10%	50%	30%	10%	50%	30%	10%	0
pfc	20%			20%			20%			20%			20%			0
RCR	RCR:Room Cavity Ratio						Ceiling Cavity Exitance Coefficients(CCEC)									
0.0	.190	.190	.190	.163	.163	.163	.111	.111	.111	.064	.064	.064	.020	.020	.020	
1.0	.173	.157	.142	.148	.135	.123	.101	.093	.085	.058	.054	.049	.019	.017	.016	
2.0	.160	.132	.109	.137	.114	.094	.094	.079	.066	.054	.046	.039	.017	.015	.013	
3.0	.149	.114	.086	.128	.098	.074	.088	.068	.052	.051	.040	.031	.016	.013	.010	
4.0	.140	.099	.069	.120	.086	.060	.082	.060	.042	.048	.035	.025	.015	.011	.008	
5.0	.131	.088	.056	.113	.076	.049	.078	.053	.035	.045	.031	.020	.015	.010	.007	
6.0	.124	.079	.047	.107	.069	.041	.074	.048	.029	.043	.028	.017	.014	.009	.006	
7.0	.118	.072	.040	.101	.062	.034	.070	.044	.024	.041	.026	.015	.013	.008	.005	
8.0	.112	.066	.034	.096	.057	.030	.067	.040	.021	.039	.024	.013	.013	.008	.004	
9.0	.107	.061	.029	.092	.053	.026	.064	.037	.018	.037	.022	.011	.012	.007	.004	
10.0	.102	.056	.026	.088	.049	.023	.061	.034	.016	.036	.020	.010	.012	.007	.003	

C Range: 0 - 360DEG
 C Interval: 15.0DEG
 Test Speed: HIGH
 Temperature:25.3DEG
 Operators:DAMIN
 Test Date:2022-04-09

γ Range: 0 - 90DEG
 γ Interval: 1.0DEG
 Test System:EVERFINE GO-3000H_V1 SYSTEM V2.00.411
 Humidity:65.0%
 Test Distance:9.000m [K=1.0000]
 Remarks:

UGR(Unified Glare Rating) Table

Test:U:11.937V I:0.4983A P:4.2222W PF:0.7099 Freq:60.00Hz Lamp Flux:378.491x1 lm										
NAME: 486746-MR16-4W-2700K-60°					TYPE:			WEIGHT:		
SPEC.:					DIM.:			SERIAL No.:		
MFR.:					SUR.:35mm			Shielding Angle:		
ceiling/cavity	0.7	0.7	0.5	0.5	0.3	0.7	0.7	0.5	0.5	0.3
walls	0.5	0.3	0.5	0.3	0.3	0.5	0.3	0.5	0.3	0.3
working plane	0.2	0.2	0.2	0.2	0.2	0.2	0.2	0.2	0.2	0.2
Room dimensions	Viewed crosswise					Viewed endwise				
x = 2H y = 2H	24.3	25.4	24.6	25.6	25.8	24.2	25.3	24.4	25.4	25.6
3H	24.5	25.5	24.8	25.7	25.9	24.3	25.3	24.6	25.6	25.8
4H	24.5	25.5	24.8	25.7	25.9	24.4	25.3	24.6	25.5	25.8
6H	24.5	25.4	24.8	25.7	25.9	24.4	25.3	24.7	25.5	25.8
8H	24.5	25.4	24.8	25.6	25.9	24.4	25.3	24.7	25.5	25.8
12H	24.5	25.3	24.8	25.6	25.9	24.4	25.2	24.7	25.5	25.8
4H 2H	24.4	25.3	24.7	25.5	25.8	24.2	25.2	24.5	25.4	25.6
3H	24.6	25.4	24.9	25.7	26.0	24.5	25.3	24.8	25.6	25.9
4H	24.7	25.4	25.0	25.7	26.0	24.5	25.3	24.9	25.6	25.9
6H	24.7	25.4	25.1	25.7	26.1	24.6	25.3	25.0	25.6	26.0
8H	24.8	25.4	25.2	25.7	26.1	24.7	25.3	25.1	25.6	26.0
12H	24.8	25.3	25.2	25.7	26.1	24.7	25.3	25.1	25.7	26.1
8H 4H	24.6	25.2	25.0	25.6	26.0	24.5	25.1	24.9	25.5	25.8
6H	24.7	25.2	25.2	25.6	26.1	24.6	25.1	25.1	25.5	25.9
8H	24.8	25.3	25.3	25.7	26.1	24.7	25.2	25.2	25.6	26.0
12H	24.9	25.2	25.3	25.7	26.2	24.8	25.2	25.3	25.7	26.1
12H 4H	24.6	25.1	25.0	25.5	25.9	24.5	25.0	24.9	25.4	25.8
6H	24.7	25.2	25.2	25.6	26.0	24.6	25.1	25.1	25.5	25.9
8H	24.8	25.2	25.3	25.6	26.1	24.7	25.1	25.2	25.6	26.0
Variations with the observer position at spacings:										
S = 1.0H	+ 1.2 / - 1.7					+ 1.2 / - 1.7				
1.5H	+ 1.8 / - 1.1					+ 1.8 / - 1.2				
2.0H	+ 2.3 / - 1.7					+ 2.3 / - 1.7				

CIE Pub.117, 378.5 lm Total Lamp Luminous Flux Corrected (8log(F/F0) = -3.4)
Area: 0.001 m2

C Range: 0 - 360DEG
C Interval: 15.0DEG
Test Speed: HIGH
Temperature:25.3DEG
Operators:DAMIN
Test Date:2022-04-09

γ Range: 0 - 90DEG
γ Interval: 1.0DEG
Test System:EVERFINE GO-3000H_V1 SYSTEM V2.00.411
Humidity:65.0%
Test Distance:9.000m [K=1.0000]
Remarks:

UTILIZATION FACTORS TABLE

Test:U:11.937V I:0.4983A P:4.2222W PF:0.7099 Freq:60.00Hz Lamp Flux:378.491x1 lm		
NAME: 486746-MR16-4W-2700K-60°	TYPE:	WEIGHT:
SPEC.:	DIM.:	SERIAL No.:
MFR.:	SUR.:35mm	Shielding Angle:

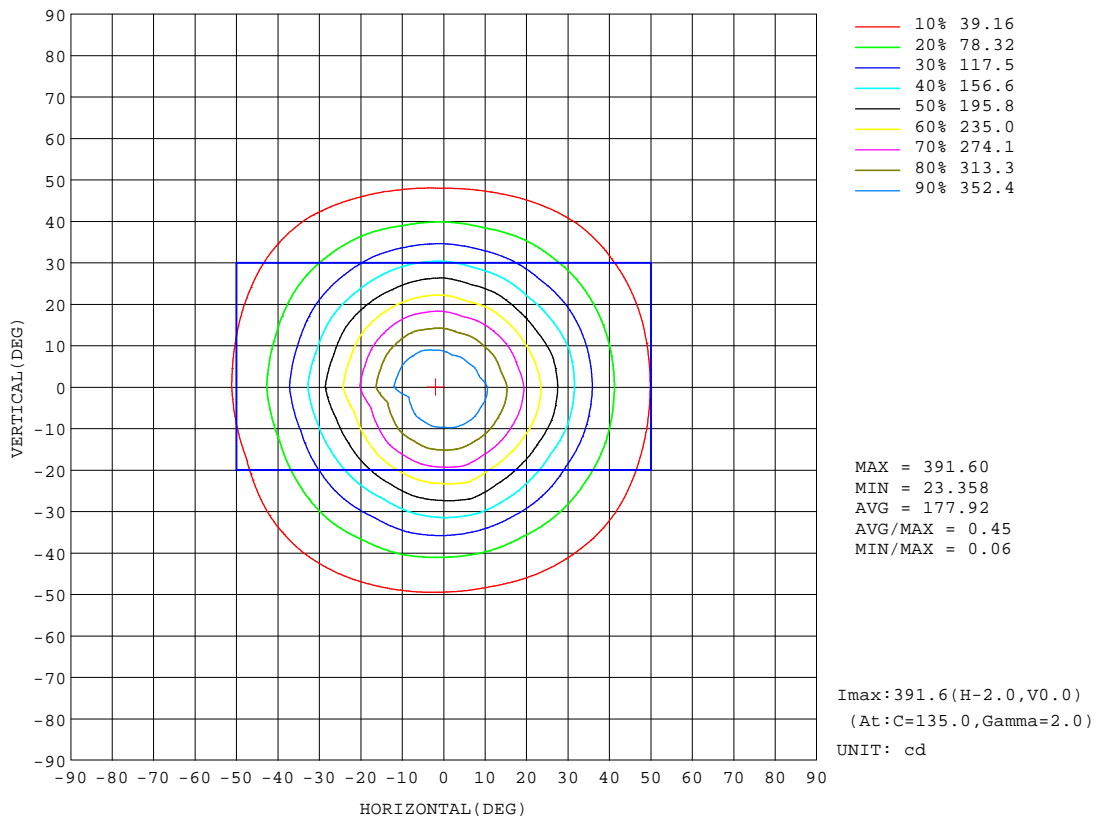
REFLECTANCE										
Ceiling	0.8	0.8	0.8	0.7	0.7	0.7	0.5	0.5	0.5	0
Walls	0.7	0.5	0.3	0.7	0.5	0.3	0.7	0.5	0.3	0
Working plane	0.2	0.2	0.2	0.2	0.2	0.2	0.2	0.2	0.2	0
ROOM INDEX	UTILIZATION FACTORS(PERCENT) k(RI) x RCR = 5									
k = 0.60	77	69	64	77	69	64	76	69	64	60
0.80	86	78	74	85	78	73	84	77	73	68
1.00	92	85	80	91	85	80	90	85	80	75
1.25	98	91	86	96	90	86	94	89	85	80
1.50	101	95	90	100	94	90	97	92	89	84
2.00	105	100	96	103	99	95	101	97	93	88
2.50	107	102	99	106	101	98	102	99	96	89
3.00	109	105	102	107	104	100	104	101	98	91
4.00	112	108	105	110	107	104	106	103	101	94
5.00	113	110	108	111	108	106	107	105	103	95
ROOM INDEX	UF(total)									Direct
According to DIN EN 13032-2 2004			Suspended				SHRNOM = 1.25			

C Range: 0 - 360DEG
C Interval: 15.0DEG
Test Speed: HIGH
Temperature:25.3DEG
Operators:DAMIN
Test Date:2022-04-09

γ Range: 0 - 90DEG
γ Interval: 1.0DEG
Test System:EVERFINE GO-3000H_V1 SYSTEM V2.00.411
Humidity:65.0%
Test Distance:9.000m [K=1.0000]
Remarks:

ISOCANDELA DIAGRAM

Test:U:11.937V I:0.4983A P:4.2222W PF:0.7099 Freq:60.00Hz Lamp Flux:378.491x1 lm		
NAME: 486746-MR16-4W-2700K-60°	TYPE:	WEIGHT:
SPEC.:	DIM.:	SERIAL No.:
MFR.:	SUR.:35mm	Shielding Angle:



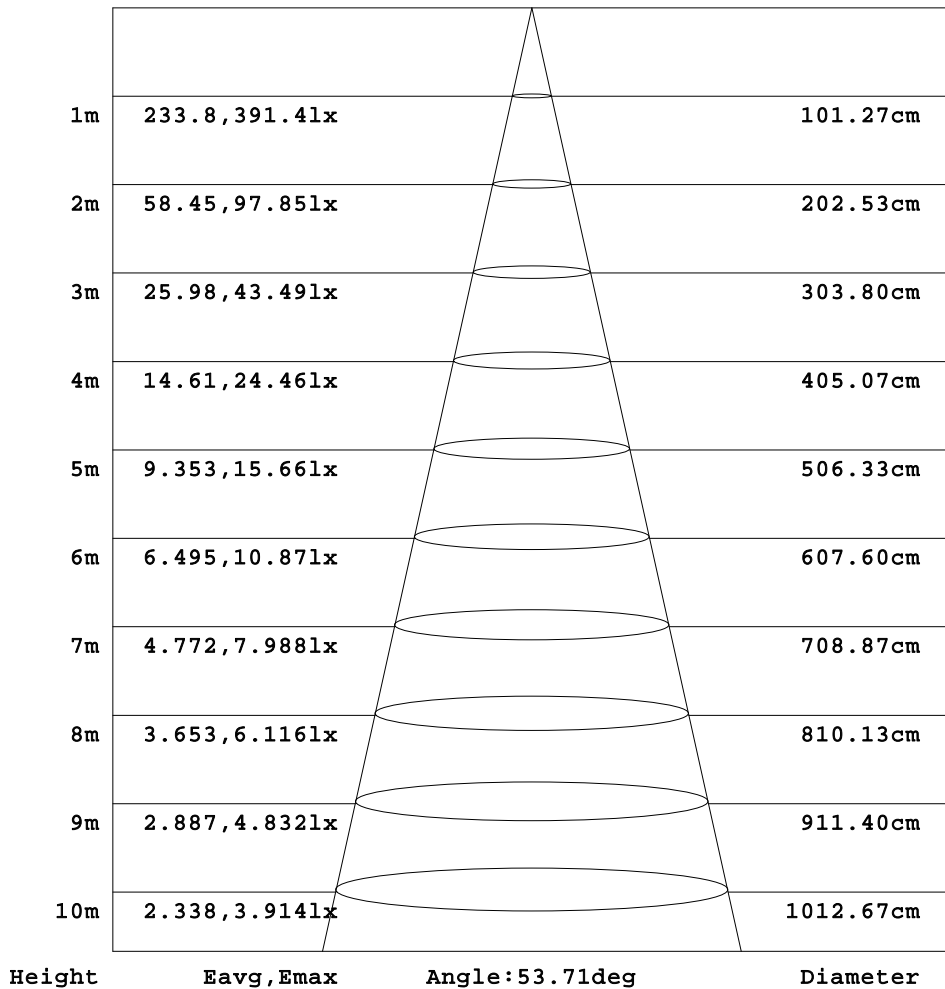
C Range: 0 - 360DEG
 C Interval: 15.0DEG
 Test Speed: HIGH
 Temperature:25.3DEG
 Operators:DAMIN
 Test Date:2022-04-09

γ Range: 0 - 90DEG
 γ Interval: 1.0DEG
 Test System:EVERFINE GO-3000H_V1 SYSTEM V2.00.411
 Humidity:65.0%
 Test Distance:9.000m [K=1.0000]
 Remarks:

AAI Figure

Test:U:11.937V I:0.4983A P:4.2222W PF:0.7099 Freq:60.00Hz Lamp Flux:378.49lx1 lm		
NAME: 486746-MR16-4W-2700K-60°	TYPE:	WEIGHT:
SPEC.:	DIM.:	SERIAL No.:
MFR.:	SUR.:35mm	Shielding Angle:

Flux out:190.7 lm



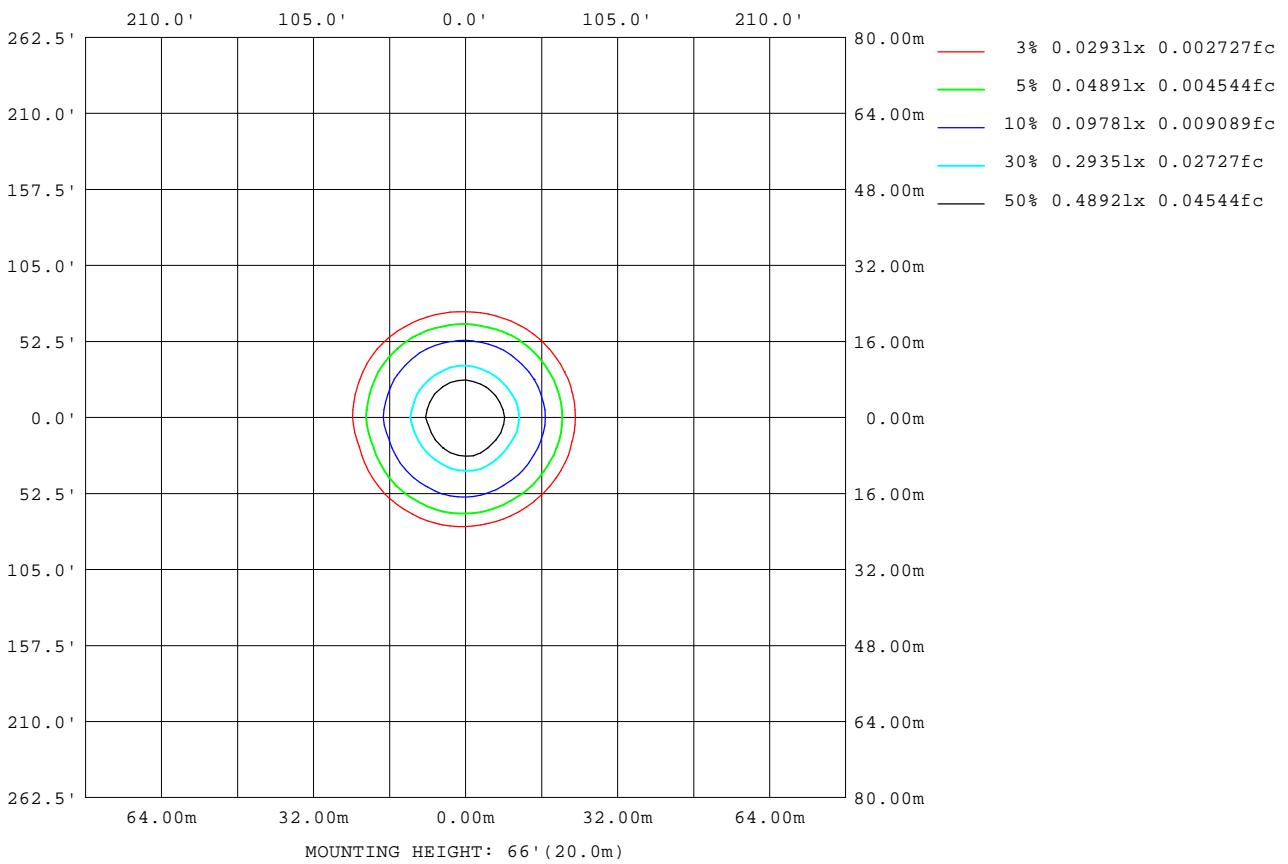
Note:The Curves indicate the illuminated area and the average illumination when the luminaire is at different distance.

C Range: 0 - 360DEG
C Interval: 15.0DEG
Test Speed: HIGH
Temperature:25.3DEG
Operators:DAMIN
Test Date:2022-04-09

γ Range: 0 - 90DEG
γ Interval: 1.0DEG
Test System:EVERFINE GO-3000H_V1 SYSTEM V2.00.411
Humidity:65.0%
Test Distance:9.000m [K=1.0000]
Remarks:

ISOLUX DIAGRAM

Test:U:11.937V I:0.4983A P:4.2222W PF:0.7099 Freq:60.00Hz Lamp Flux:378.491x1 lm		
NAME: 486746-MR16-4W-2700K-60°	TYPE:	WEIGHT:
SPEC.:	DIM.:	SERIAL No.:
MFR.:	SUR.:35mm	Shielding Angle:



C Range: 0 - 360DEG
C Interval: 15.0DEG
Test Speed: HIGH
Temperature:25.3DEG
Operators:DAMIN
Test Date:2022-04-09

γ Range: 0 - 90DEG
γ Interval: 1.0DEG
Test System:EVERFINE GO-3000H_V1 SYSTEM V2.00.411
Humidity:65.0%
Test Distance:9.000m [K=1.0000]
Remarks:

LED Avg.L Report

Test:U:11.937V I:0.4983A P:4.2222W PF:0.7099 Freq:60.00Hz Lamp Flux:378.491x1 lm		
NAME: 486746-MR16-4W-2700K-60°	TYPE:	WEIGHT:
SPEC.:	DIM.:	SERIAL No.:
MFR.:	SUR.:35mm	Shielding Angle:

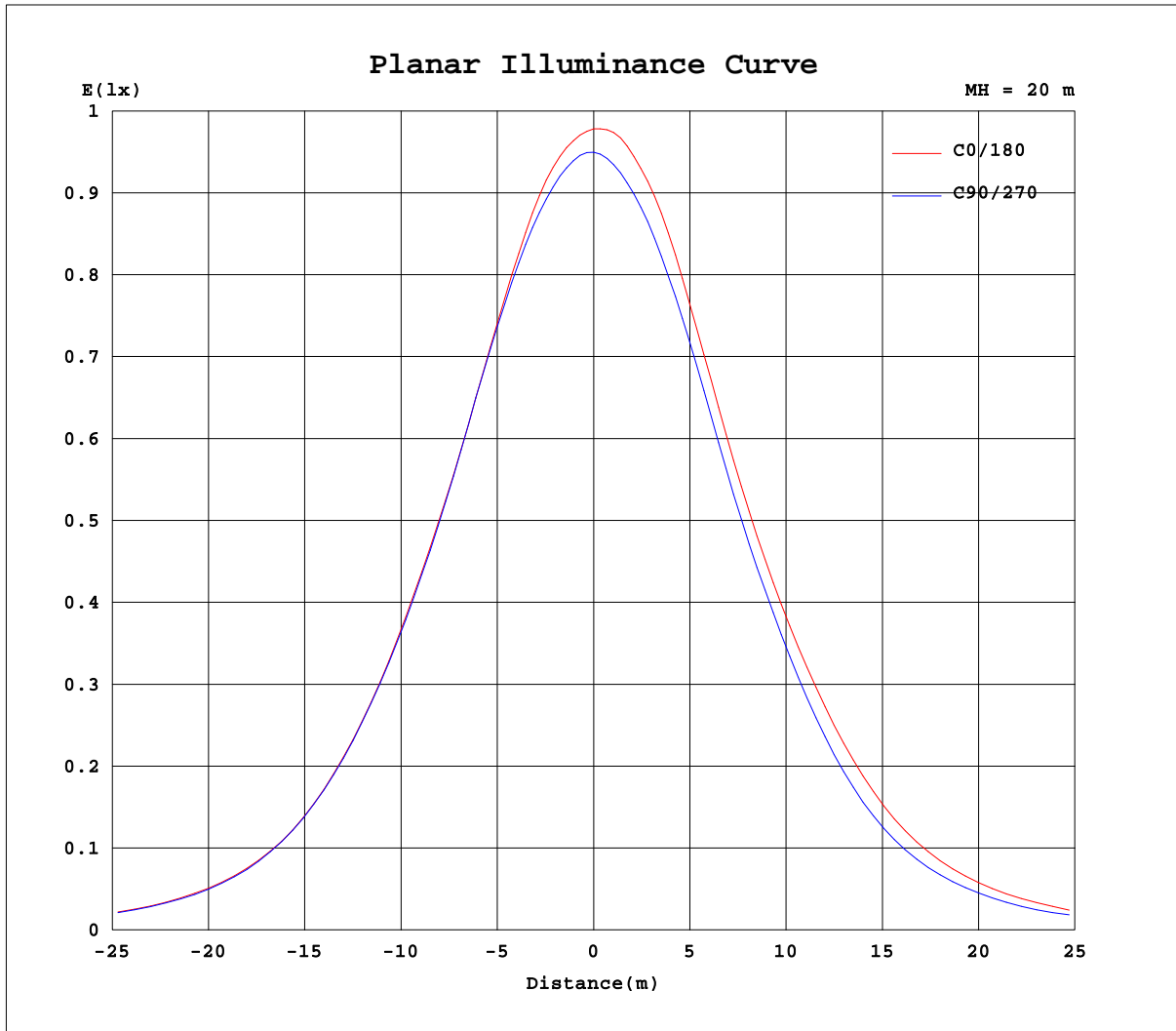
AvgL	cd/m2
L_0~180(65)av	26222
L_0~180(75)av	13507
L_0~180(85)av	11317
L_90~270(65)av	23282
L_90~270(75)av	13077
L_90~270(85)av	11913
L_45(65)av	27120
L_45(75)av	13721
L_45(85)av	11106

Standard: GB/T 29293-2012

C Range: 0 - 360DEG
C Interval: 15.0DEG
Test Speed: HIGH
Temperature:25.3DEG
Operators:DAMIN
Test Date:2022-04-09

γ Range: 0 - 90DEG
γ Interval: 1.0DEG
Test System:EVERFINE GO-3000H_V1 SYSTEM V2.00.411
Humidity:65.0%
Test Distance:9.000m [K=1.0000]
Remarks:

Planar Illuminance Curve



C Range: 0 - 360DEG
C Interval: 15.0DEG
Test Speed: HIGH
Temperature: 25.3DEG
Operators: DAMIN
Test Date: 2022-04-09

γ Range: 0 - 90DEG
 γ Interval: 1.0DEG
Test System: EVERFINE GO-3000H_V1 SYSTEM V2.00.411
Humidity: 65.0%
Test Distance: 9.000m [K=1.0000]
Remarks:

LUMINOUS DISTRIBUTION INTENSITY DATA

Test:U:11.937V I:0.4983A P:4.2222W PF:0.7099 Freq:60.00Hz Lamp Flux:378.491x1 lm		
NAME: 486746-MR16-4W-2700K-60°	TYPE:	WEIGHT:
SPEC.:	DIM.:	SERIAL No.:
MFR.:	SUR.:35mm	Shielding Angle:

Table--1

UNIT: cd

C(DEG) γ (DEG)	0	15	30	45	60	75	90	105	120	135	150	165	180	195	210	225	240	255	270
0	381	381	381	381	381	381	381	381	381	381	381	381	381	381	381	381	381	381	381
5	372	373	372	372	372	373	374	375	376	377	376	375	377	377	377	375	374	371	370
10	347	349	349	351	352	352	352	354	354	356	353	353	357	355	356	353	352	347	345
15	308	309	309	311	312	315	316	317	315	318	313	311	317	315	317	314	314	308	307
20	261	261	259	259	262	270	268	269	267	267	263	263	269	265	266	264	263	259	257
25	215	214	208	206	209	221	219	219	214	213	213	217	222	216	217	213	209	209	209
30	167	164	156	157	162	172	171	169	162	165	167	174	178	170	169	162	161	162	160
35	122	119	114	115	117	122	125	125	120	124	125	128	133	126	125	120	119	115	114
40	83.7	82.4	79.1	79.0	79.1	83.4	85.5	88.4	85.7	87.8	87.4	88.5	93.5	89.7	88.5	84.9	82.6	77.9	77.4
45	56.6	56.7	54.4	54.5	54.2	56.1	56.9	59.6	59.1	61.2	60.3	60.7	64.0	61.5	61.5	58.5	56.0	52.3	51.5
50	37.6	37.4	37.6	36.9	36.8	36.3	37.5	38.8	40.2	41.1	41.2	39.7	42.6	41.8	42.1	40.2	36.9	34.4	32.8
55	25.0	25.3	25.9	25.3	24.8	24.0	24.5	25.7	27.3	28.3	28.0	26.6	28.1	28.3	28.5	27.5	24.9	23.0	21.8
60	16.6	17.0	17.6	17.3	16.7	16.2	16.5	17.3	18.4	19.4	18.9	17.8	18.9	19.1	19.6	18.7	16.8	15.3	14.7
65	10.4	10.6	11.0	10.8	10.6	10.3	10.5	11.0	11.6	12.2	11.8	10.9	11.8	12.0	12.4	11.8	10.5	9.53	9.14
70	5.82	6.02	6.29	6.25	6.12	6.03	6.23	6.46	6.71	7.01	6.64	6.05	6.63	6.81	7.06	6.69	5.95	5.46	5.22
75	3.33	3.38	3.45	3.45	3.47	3.57	3.73	3.74	3.73	3.76	3.60	3.38	3.66	3.72	3.72	3.55	3.29	3.15	3.04
80	2.38	2.40	2.40	2.38	2.38	2.48	2.60	2.53	2.48	2.47	2.45	2.40	2.53	2.57	2.47	2.36	2.29	2.23	2.18
85	0.89	0.90	0.89	0.89	1.01	1.25	1.46	1.38	1.19	1.10	0.98	0.81	1.08	1.10	1.10	1.02	0.85	0.72	0.62
90	0.00	0.00	0.00	0.00	0.00	0.00	0.00	0.00	0.00	0.00	0.00	0.00	0.01	0.01	0.01	0.01	0.02	0.01	0.01

C Range: 0 - 360DEG
C Interval: 15.0DEG
Test Speed: HIGH
Temperature:25.3DEG
Operators:DAMIN
Test Date:2022-04-09

γ Range: 0 - 90DEG
γ Interval: 1.0DEG
Test System:EVERFINE GO-3000H_V1 SYSTEM V2.00.411
Humidity:65.0%
Test Distance:9.000m [K=1.0000]
Remarks:

LUMINOUS DISTRIBUTION INTENSITY DATA

Test:U:11.937V I:0.4983A P:4.2222W PF:0.7099 Freq:60.00Hz Lamp Flux:378.491x1 lm		
NAME: 486746-MR16-4W-2700K-60°	TYPE:	WEIGHT:
SPEC.:	DIM.:	SERIAL No.:
MFR.:	SUR.:35mm	Shielding Angle:

Table--2

UNIT: cd

C (DEG) γ (DEG)	285	300	315	330	345														
0	381	381	381	381	381														
5	369	370	370	372	374														
10	343	346	348	353	354														
15	303	306	308	312	313														
20	251	255	257	262	266														
25	202	205	204	209	220														
30	154	155	154	162	174														
35	111	113	114	120	126														
40	75.3	78.3	79.3	83.1	86.1														
45	50.5	53.5	54.5	56.8	59.0														
50	33.5	35.3	37.3	37.9	39.5														
55	22.4	24.0	25.7	25.8	26.4														
60	15.0	16.3	17.4	17.5	17.7														
65	9.30	10.2	11.0	11.0	11.2														
70	5.30	5.84	6.33	6.30	6.37														
75	3.07	3.26	3.44	3.49	3.57														
80	2.21	2.31	2.42	2.48	2.50														
85	0.61	0.76	0.87	0.98	1.22														
90	0.01	0.02	0.02	0.02	0.02														

C Range: 0 - 360DEG
 C Interval: 15.0DEG
 Test Speed: HIGH
 Temperature:25.3DEG
 Operators:DAMIN
 Test Date:2022-04-09

γ Range: 0 - 90DEG
 γ Interval: 1.0DEG
 Test System:EVERFINE GO-3000H_V1 SYSTEM V2.00.411
 Humidity:65.0%
 Test Distance:9.000m [K=1.0000]
 Remarks: