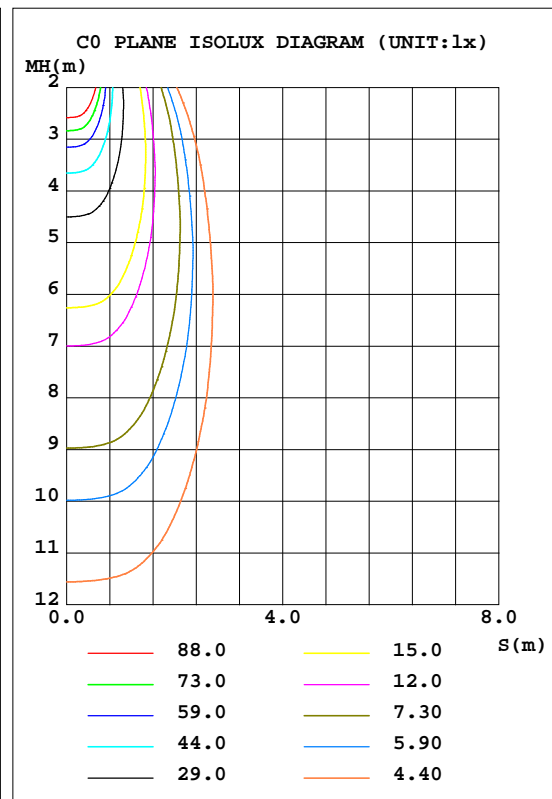
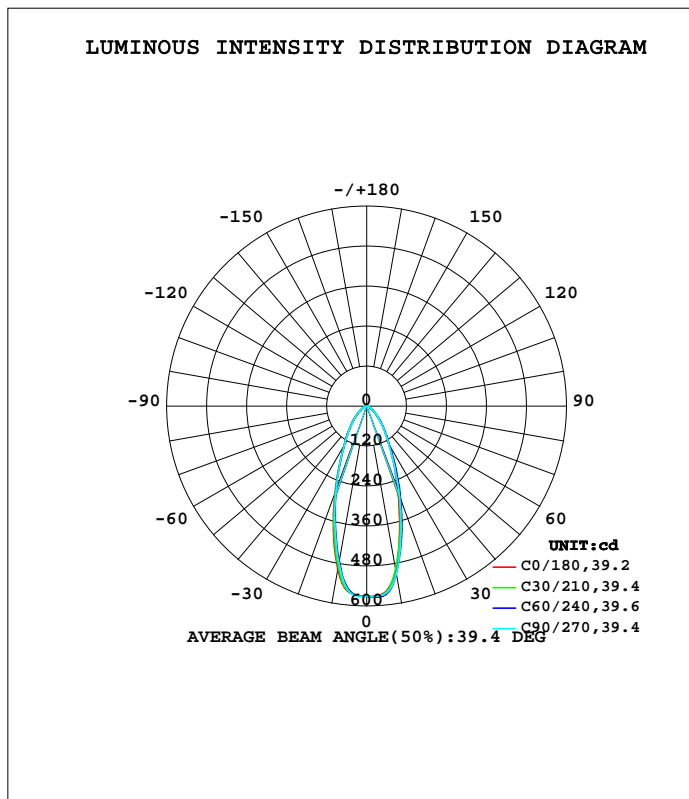


**LUMINAIRE PHOTOMETRIC TEST REPORT**

Test:U:11.932V I:0.4964A P:4.3030W PF:0.7265 Freq:60.00Hz Lamp Flux:389.389x1 lm		
NAME: 486750-MR16-4W-3000K-40°	TYPE:	WEIGHT:
SPEC.:	DIM.:	SERIAL No.:
MFR.:	SUR.:35mm	Shielding Angle:

DATA OF LAMP		PHOTOMETRIC DATA			
MODEL		Imax(cd)	574.4	S/MH(C0/180)	0.63
NOMINAL POWER(W)	--	LOR(%)	100.0	S/MH(C90/270)	0.62
RATED VOLTAGE(V)	--	TOTAL FLUX(lm)	389.39	η UP,DN(C0-180)	0.0,49.6
NOMINAL FLUX(lm)	389.389	CIE CLASS	DIRECT	η UP,DN(C180-360)	0.0,50.4
LAMPS INSIDE	1	η up(%)	0.0	CIBSE SHR NOM	0.50
TEST VOLTAGE(V)	--	η down(%)	100.0	CIBSE SHR MAX	0.70



C Range: 0 - 360DEG  
 C Interval: 15.0DEG  
 Test Speed: HIGH  
 Temperature:25.3DEG  
 Operators:DAMIN  
 Test Date:2022-04-09

γ Range: 0 - 90DEG  
 γ Interval: 1.0DEG  
 Test System:EVERFINE GO-3000H\_V1 SYSTEM V2.00.411  
 Humidity:65.0%  
 Test Distance:9.000m [K=1.0000]  
 Remarks:

**ZONAL FLUX DIAGRAM**

**ZONAL FLUX DIAGRAM:**

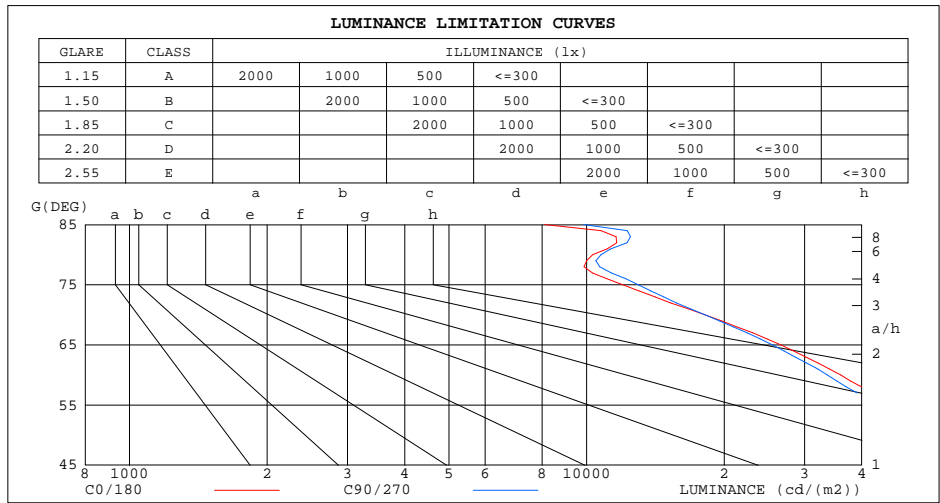
$\gamma$	C0	C45	C90	C135	C180	C225	C270	C315	$\gamma$	$\Phi$ zone	$\Phi$ total	\$lum,lamp
10	500.4	510.8	512.0	482.5	499.2	476.4	480.3	503.7	0- 10	51.69	51.69	13.3,13.3
20	275.0	302.2	289.4	269.4	280.1	267.8	271.6	286.5	10- 20	105.9	157.6	40.5,40.5
30	135.7	144.0	136.2	129.4	136.9	132.9	134.8	146.3	20- 30	90.70	248.3	63.8,63.8
40	71.65	71.59	70.25	70.65	74.63	69.80	71.47	78.53	30- 40	62.72	311.0	79.9,79.9
50	36.88	34.02	35.56	35.11	38.62	33.94	35.29	40.64	40- 50	40.57	351.6	90.3,90.3
60	17.49	15.91	16.91	16.24	18.54	15.21	16.31	18.67	50- 60	22.76	374.4	96.1,96.1
70	6.037	5.889	6.244	5.418	6.270	4.851	5.327	6.381	60- 70	10.66	385.0	98.9,98.9
80	1.742	1.798	1.877	1.799	1.920	1.868	1.801	1.880	70- 80	3.477	388.5	99.8,99.8
90	0	0	0	0	0.0123	0.0140	0.0127	0.0113	80- 90	0.9008	389.4	100,100
100									90-100			
110									100-110			
120									110-120			
130									120-130			
140									130-140			
150									140-150			
160									150-160			
170									160-170			
180									170-180			
DEG	LUMINOUS INTENSITY:cd									UNIT:lm		

C Range: 0 - 360DEG  
C Interval: 15.0DEG  
Test Speed: HIGH  
Temperature:25.3DEG  
Operators:DAMIN  
Test Date:2022-04-09

$\gamma$  Range: 0 - 90DEG  
 $\gamma$  Interval: 1.0DEG  
Test System:EVERFINE GO-3000H\_V1 SYSTEM V2.00.411  
Humidity:65.0%  
Test Distance:9.000m [K=1.0000]  
Remarks:

**LUMINANCE LIMITATION CURVES**

Test:U:11.932V I:0.4964A P:4.3030W PF:0.7265 Freq:60.00Hz Lamp Flux:389.389x1 lm		
NAME: 486750-MR16-4W-3000K-40°	TYPE:	WEIGHT:
SPEC.:	DIM.:	SERIAL No.:
MFR.:	SUR.:35mm	Shielding Angle:



LUMINANCE cd/(m2)		
G(DEG)	C0/180	C90/270
85	8102	9857
80	10315	10753
75	12000	12966
70	18155	18159
65	26609	25512
60	35985	33648
55	46171	42922
50	59020	55026
45	75544	70883

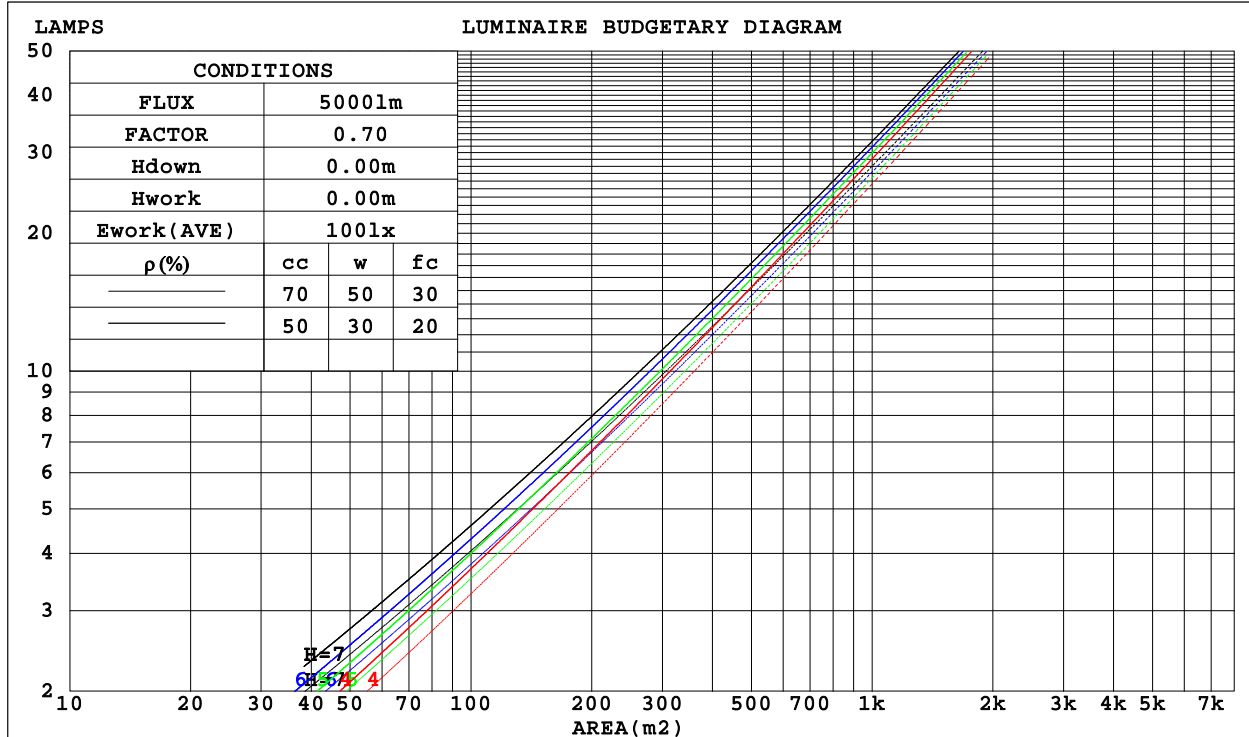
C Range: 0 - 360DEG  
 C Interval: 15.0DEG  
 Test Speed: HIGH  
 Temperature:25.3DEG  
 Operators:DAMIN  
 Test Date:2022-04-09

γ Range: 0 - 90DEG  
 γ Interval: 1.0DEG  
 Test System:EVERFINE GO-3000H\_V1 SYSTEM V2.00.411  
 Humidity:65.0%  
 Test Distance:9.000m [K=1.0000]  
 Remarks:

**CU AND LUMINAIRE BUDGETARY ESTIMATE DIAGRAM**

Test:U:11.932V I:0.4964A P:4.3030W PF:0.7265 Freq:60.00Hz Lamp Flux:389.389x1 lm		
NAME: 486750-MR16-4W-3000K-40°	TYPE:	WEIGHT:
SPEC.:	DIM.:	SERIAL No.:
MFR.:	SUR.:35mm	Shielding Angle:

$\rho_{cc}$	80%			70%			50%			30%			10%			0
$\rho_w$	50%	30%	10%	50%	30%	10%	50%	30%	10%	50%	30%	10%	50%	30%	10%	0
$\rho_{fc}$	20%			20%			20%			20%			20%			0
RCR	RCR:Room Cavity Ratio						Coefficients of Utilization(CU)									
0.0	1.19	1.19	1.19	1.16	1.16	1.16	1.11	1.11	1.11	1.06	1.06	1.06	1.02	1.02	1.02	1.00
1.0	1.10	1.07	1.05	1.08	1.05	1.03	1.04	1.02	.00	.00	.98	.97	.96	.95	.94	.92
2.0	1.01	.97	.93	.99	.95	.92	.96	.93	.90	.93	.90	.88	.90	.88	.86	.84
3.0	.94	.88	.84	.92	.87	.83	.89	.85	.82	.87	.83	.80	.85	.82	.79	.78
4.0	.87	.81	.76	.86	.80	.76	.84	.79	.75	.81	.77	.74	.80	.76	.73	.72
5.0	.81	.75	.70	.80	.74	.70	.78	.73	.69	.76	.72	.68	.75	.71	.68	.66
6.0	.76	.69	.65	.75	.69	.65	.73	.68	.64	.72	.67	.64	.71	.66	.63	.62
7.0	.71	.65	.60	.71	.64	.60	.69	.64	.60	.68	.63	.60	.67	.62	.59	.58
8.0	.67	.61	.56	.66	.61	.56	.65	.60	.56	.64	.59	.56	.63	.59	.56	.54
9.0	.63	.57	.53	.63	.57	.53	.62	.57	.53	.61	.56	.53	.60	.56	.52	.51
10.0	.60	.54	.50	.60	.54	.50	.59	.54	.50	.58	.53	.50	.57	.53	.50	.48



C Range: 0 - 360DEG  
 C Interval: 15.0DEG  
 Test Speed: HIGH  
 Temperature:25.3DEG  
 Operators:DAMIN  
 Test Date:2022-04-09

$\gamma$  Range: 0 - 90DEG  
 $\gamma$  Interval: 1.0DEG  
 Test System:EVERFINE GO-3000H\_V1 SYSTEM V2.00.411  
 Humidity:65.0%  
 Test Distance:9.000m [K=1.0000]  
 Remarks:

WEC AND CCEC

Test:U:11.932V I:0.4964A P:4.3030W PF:0.7265 Freq:60.00Hz Lamp Flux:389.389x1 lm		
NAME: 486750-MR16-4W-3000K-40°	TYPE:	WEIGHT:
SPEC.:	DIM.:	SERIAL No.:
MFR.:	SUR.:35mm	Shielding Angle:

pcc	80%			70%			50%			30%			10%			0
pw	50%	30%	10%	50%	30%	10%	50%	30%	10%	50%	30%	10%	50%	30%	10%	0
pfc	20%			20%			20%			20%			20%			0
RCR	RCR:Room Cavity Ratio						Wall Exitance Coefficients(WEC)									
0.0																
1.0	.197	.112	.035	.190	.108	.034	.177	.102	.032	.166	.096	.031	.155	.090	.029	
2.0	.189	.103	.032	.183	.101	.031	.172	.096	.030	.162	.091	.029	.153	.087	.027	
3.0	.179	.095	.029	.174	.093	.028	.165	.089	.027	.156	.086	.026	.148	.082	.025	
4.0	.169	.088	.026	.165	.086	.026	.157	.083	.025	.149	.080	.024	.143	.077	.024	
5.0	.160	.082	.024	.156	.080	.023	.149	.078	.023	.143	.075	.022	.137	.073	.022	
6.0	.151	.076	.022	.148	.075	.022	.142	.073	.021	.136	.071	.021	.131	.069	.020	
7.0	.144	.071	.020	.141	.070	.020	.135	.068	.020	.130	.067	.019	.125	.065	.019	
8.0	.136	.067	.019	.134	.066	.019	.129	.064	.018	.124	.063	.018	.120	.062	.018	
9.0	.130	.063	.018	.127	.062	.017	.123	.061	.017	.119	.060	.017	.115	.058	.017	
10.0	.124	.059	.016	.122	.059	.016	.118	.058	.016	.114	.057	.016	.110	.056	.016	

pcc	80%			70%			50%			30%			10%			0
pw	50%	30%	10%	50%	30%	10%	50%	30%	10%	50%	30%	10%	50%	30%	10%	0
pfc	20%			20%			20%			20%			20%			0
RCR	RCR:Room Cavity Ratio						Ceiling Cavity Exitance Coefficients(CCEC)									
0.0	.190	.190	.190	.163	.163	.163	.111	.111	.111	.064	.064	.064	.020	.020	.020	
1.0	.172	.157	.143	.148	.135	.123	.101	.093	.085	.058	.054	.050	.019	.017	.016	
2.0	.159	.132	.110	.136	.114	.095	.093	.079	.067	.054	.046	.039	.017	.015	.013	
3.0	.147	.114	.087	.126	.098	.076	.086	.068	.053	.050	.040	.031	.016	.013	.010	
4.0	.137	.099	.070	.118	.086	.061	.081	.060	.043	.047	.035	.025	.015	.011	.008	
5.0	.129	.088	.058	.110	.076	.050	.076	.053	.035	.044	.031	.021	.014	.010	.007	
6.0	.121	.079	.048	.104	.068	.042	.072	.048	.030	.042	.028	.018	.013	.009	.006	
7.0	.115	.071	.041	.099	.062	.036	.068	.043	.025	.040	.025	.015	.013	.008	.005	
8.0	.109	.065	.035	.093	.056	.031	.065	.040	.022	.038	.023	.013	.012	.008	.004	
9.0	.103	.060	.030	.089	.052	.027	.062	.036	.019	.036	.022	.011	.012	.007	.004	
10.0	.098	.055	.027	.085	.048	.023	.059	.034	.017	.034	.020	.010	.011	.007	.003	

C Range: 0 - 360DEG  
 C Interval: 15.0DEG  
 Test Speed: HIGH  
 Temperature:25.3DEG  
 Operators:DAMIN  
 Test Date:2022-04-09

γ Range: 0 - 90DEG  
 γ Interval: 1.0DEG  
 Test System:EVERFINE GO-3000H\_V1 SYSTEM V2.00.411  
 Humidity:65.0%  
 Test Distance:9.000m [K=1.0000]  
 Remarks:

**UGR(Unified Glare Rating) Table**

Test:U:11.932V I:0.4964A P:4.3030W PF:0.7265 Freq:60.00Hz Lamp Flux:389.389x1 lm										
NAME: 486750-MR16-4W-3000K-40°					TYPE:			WEIGHT:		
SPEC.:					DIM.:			SERIAL No.:		
MFR.:					SUR.:35mm			Shielding Angle:		
ceiling/cavity	0.7	0.7	0.5	0.5	0.3	0.7	0.7	0.5	0.5	0.3
walls	0.5	0.3	0.5	0.3	0.3	0.5	0.3	0.5	0.3	0.3
working plane	0.2	0.2	0.2	0.2	0.2	0.2	0.2	0.2	0.2	0.2
Room dimensions	Viewed crosswise					Viewed endwise				
x = 2H y = 2H	23.6	24.6	23.8	24.8	25.0	23.4	24.4	23.6	24.6	24.8
3H	23.8	24.8	24.1	25.0	25.2	23.7	24.6	23.9	24.8	25.0
4H	23.9	24.8	24.1	25.0	25.2	23.7	24.6	24.0	24.8	25.1
6H	23.8	24.7	24.1	24.9	25.2	23.7	24.5	24.0	24.8	25.0
8H	23.8	24.6	24.1	24.9	25.2	23.7	24.5	24.0	24.8	25.0
12H	23.8	24.6	24.1	24.9	25.1	23.7	24.5	24.0	24.7	25.0
4H 2H	23.7	24.6	23.9	24.8	25.0	23.5	24.4	23.8	24.6	24.9
3H	24.0	24.8	24.3	25.0	25.3	23.8	24.6	24.2	24.9	25.2
4H	24.0	24.7	24.4	25.0	25.4	23.9	24.6	24.3	24.9	25.2
6H	24.0	24.7	24.4	25.0	25.3	23.9	24.6	24.3	24.9	25.2
8H	24.1	24.6	24.5	25.0	25.4	24.0	24.5	24.4	24.9	25.3
12H	24.0	24.6	24.5	25.0	25.3	24.0	24.5	24.4	24.9	25.3
8H 4H	24.0	24.6	24.4	24.9	25.3	23.9	24.4	24.3	24.8	25.2
6H	24.0	24.5	24.4	24.9	25.3	23.9	24.4	24.4	24.8	25.2
8H	24.1	24.5	24.5	24.9	25.3	24.0	24.4	24.4	24.8	25.3
12H	24.1	24.4	24.6	24.9	25.4	24.0	24.4	24.5	24.8	25.3
12H 4H	23.9	24.5	24.3	24.8	25.2	23.8	24.3	24.2	24.7	25.1
6H	24.0	24.4	24.4	24.8	25.3	23.9	24.3	24.3	24.7	25.2
8H	24.1	24.4	24.5	24.9	25.3	24.0	24.3	24.5	24.8	25.3
Variations with the observer position at spacings:										
S = 1.0H	+ 1.0 / - 1.4					+ 1.1 / - 1.4				
1.5H	+ 1.3 / - 1.1					+ 1.2 / - 1.1				
2.0H	+ 2.2 / - 2.0					+ 2.1 / - 1.8				

CIE Pub.117, 389.4 lm Total Lamp Luminous Flux Corrected (8log(F/F0) = -3.3)  
Area: 0.001 m2

C Range: 0 - 360DEG  
C Interval: 15.0DEG  
Test Speed: HIGH  
Temperature:25.3DEG  
Operators:DAMIN  
Test Date:2022-04-09

γ Range: 0 - 90DEG  
γ Interval: 1.0DEG  
Test System:EVERFINE GO-3000H\_V1 SYSTEM V2.00.411  
Humidity:65.0%  
Test Distance:9.000m [K=1.0000]  
Remarks:

**UTILIZATION FACTORS TABLE**

Test:U:11.932V I:0.4964A P:4.3030W PF:0.7265 Freq:60.00Hz Lamp Flux:389.389x1 lm		
NAME: 486750-MR16-4W-3000K-40°	TYPE:	WEIGHT:
SPEC.:	DIM.:	SERIAL No.:
MFR.:	SUR.:35mm	Shielding Angle:

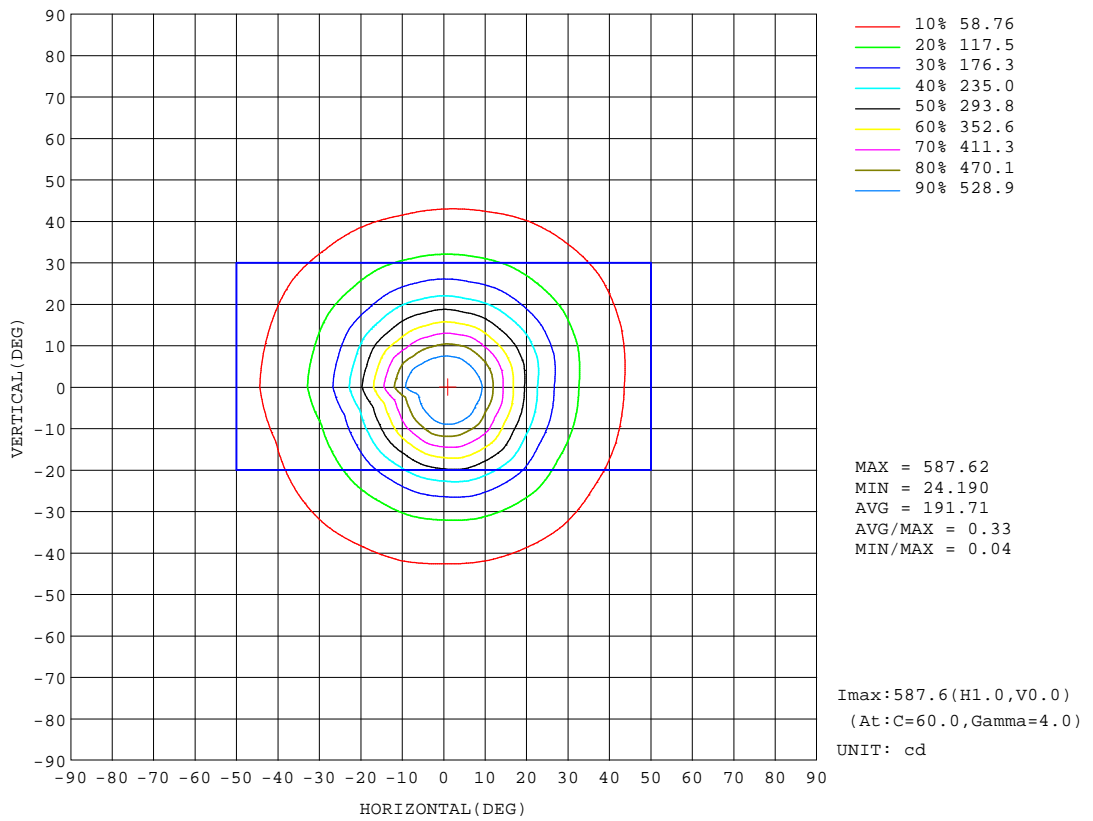
REFLECTANCE										
Ceiling	0.8	0.8	0.8	0.7	0.7	0.7	0.5	0.5	0.5	0
Walls	0.7	0.5	0.3	0.7	0.5	0.3	0.7	0.5	0.3	0
Working plane	0.2	0.2	0.2	0.2	0.2	0.2	0.2	0.2	0.2	0
ROOM INDEX	UTILIZATION FACTORS(PERCENT) k(RI) x RCR = 5									
k = 0.60	79	71	66	78	71	66	77	70	66	62
0.80	87	80	75	87	80	75	85	79	75	70
1.00	93	86	82	92	86	81	91	86	81	76
1.25	98	92	87	97	91	87	95	90	86	81
1.50	102	96	91	100	95	91	98	93	90	85
2.00	105	100	96	104	99	96	101	97	94	88
2.50	108	103	99	106	102	98	103	99	97	90
3.00	110	105	102	108	104	101	104	101	99	92
4.00	112	109	106	110	107	105	106	104	102	94
5.00	114	111	108	111	109	107	107	105	104	96
ROOM INDEX	UF(total)									Direct
According to DIN EN 13032-2 2004			Suspended				SHRNOM = 1.25			

C Range: 0 - 360DEG  
C Interval: 15.0DEG  
Test Speed: HIGH  
Temperature:25.3DEG  
Operators:DAMIN  
Test Date:2022-04-09

γ Range: 0 - 90DEG  
γ Interval: 1.0DEG  
Test System:EVERFINE GO-3000H\_V1 SYSTEM V2.00.411  
Humidity:65.0%  
Test Distance:9.000m [K=1.0000]  
Remarks:

**ISOCANDELA DIAGRAM**

Test:U:11.932V I:0.4964A P:4.3030W PF:0.7265 Freq:60.00Hz Lamp Flux:389.389x1 lm		
NAME: 486750-MR16-4W-3000K-40°	TYPE:	WEIGHT:
SPEC.:	DIM.:	SERIAL No.:
MFR.:	SUR.:35mm	Shielding Angle:



C Range: 0 - 360DEG  
 C Interval: 15.0DEG  
 Test Speed: HIGH  
 Temperature:25.3DEG  
 Operators:DAMIN  
 Test Date:2022-04-09

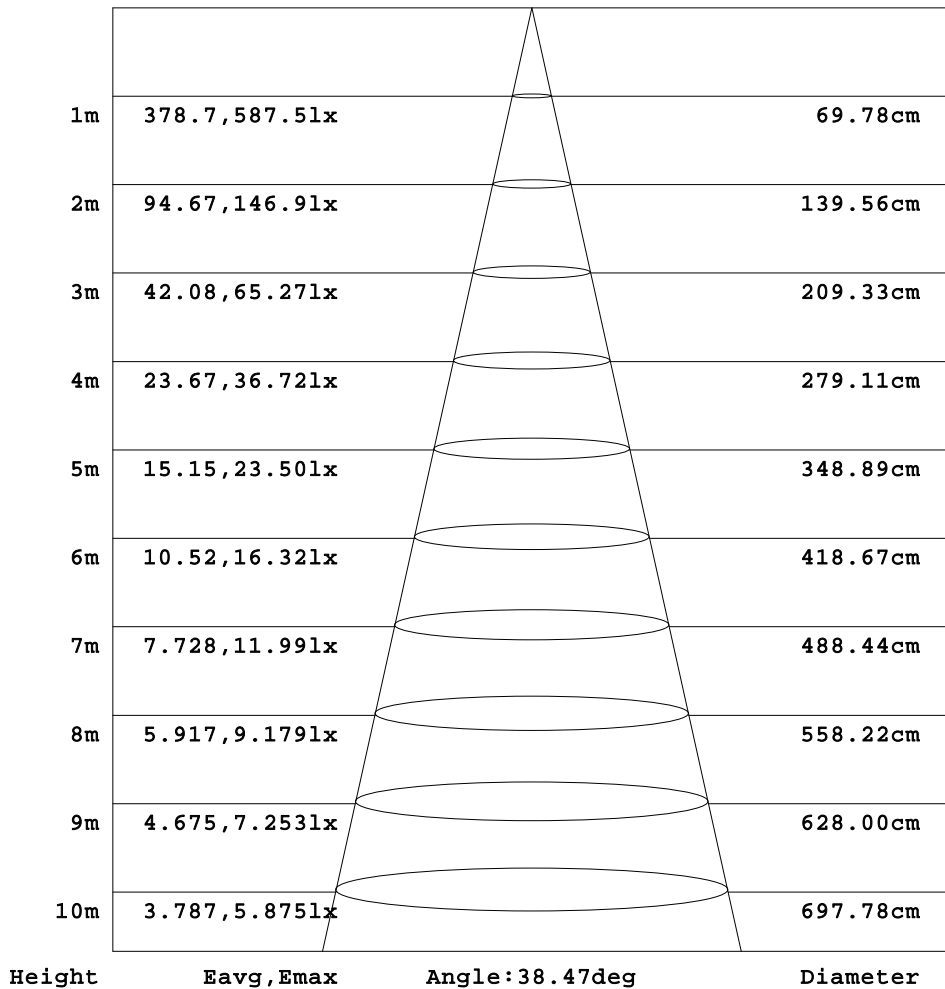
γ Range: 0 - 90DEG  
 γ Interval: 1.0DEG  
 Test System:EVERFINE GO-3000H\_V1 SYSTEM V2.00.411  
 Humidity:65.0%  
 Test Distance:9.000m [K=1.0000]  
 Remarks:



**AAI Figure**

Test:U:11.932V I:0.4964A P:4.3030W PF:0.7265 Freq:60.00Hz Lamp Flux:389.389x1 lm		
NAME: 486750-MR16-4W-3000K-40°	TYPE:	WEIGHT:
SPEC.:	DIM.:	SERIAL No.:
MFR.:	SUR.:35mm	Shielding Angle:

Flux out:157.6 lm



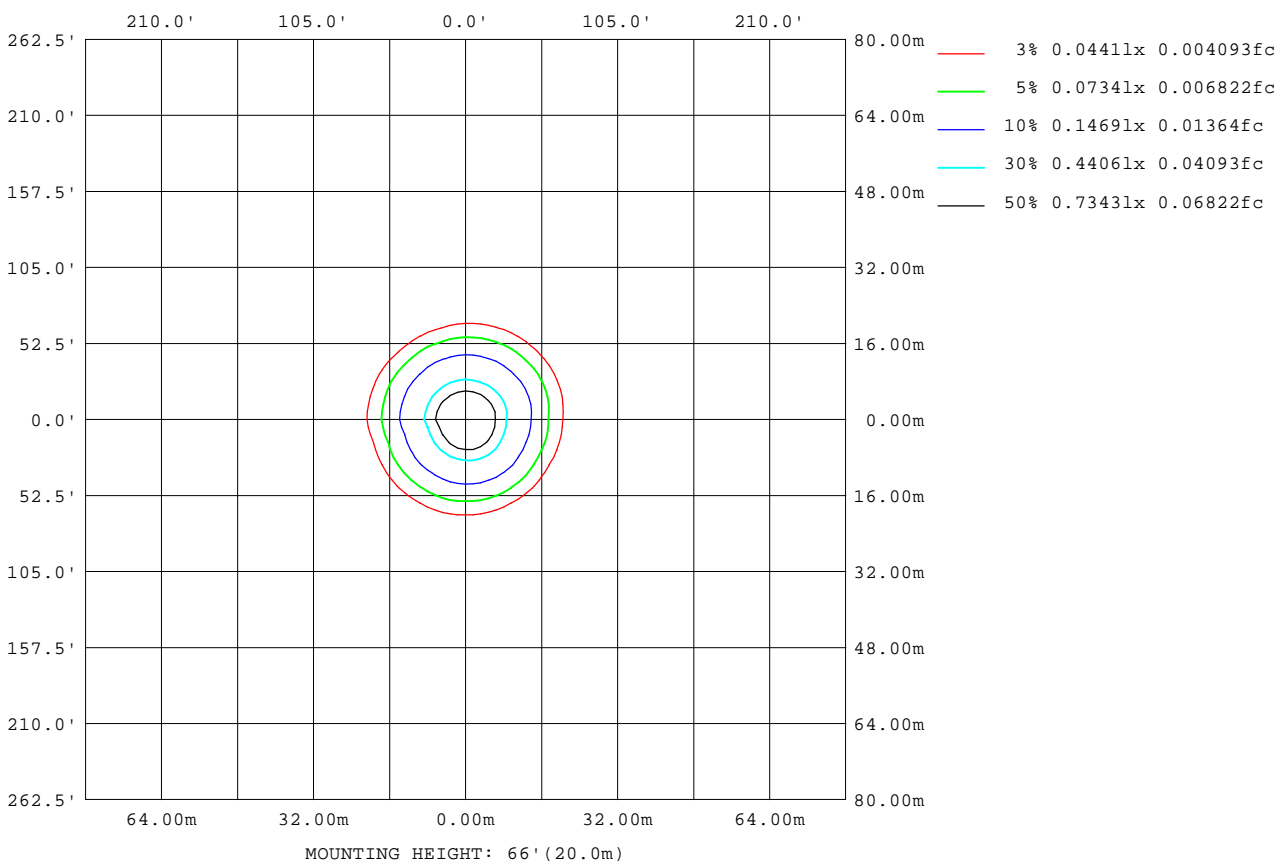
Note:The Curves indicate the illuminated area and the average illumination when the luminaire is at different distance.

C Range: 0 - 360DEG  
C Interval: 15.0DEG  
Test Speed: HIGH  
Temperature:25.3DEG  
Operators:DAMIN  
Test Date:2022-04-09

γ Range: 0 - 90DEG  
γ Interval: 1.0DEG  
Test System:EVERFINE GO-3000H\_V1 SYSTEM V2.00.411  
Humidity:65.0%  
Test Distance:9.000m [K=1.0000]  
Remarks:

**ISOLUX DIAGRAM**

Test:U:11.932V I:0.4964A P:4.3030W PF:0.7265 Freq:60.00Hz Lamp Flux:389.389x1 lm		
NAME: 486750-MR16-4W-3000K-40°	TYPE:	WEIGHT:
SPEC.:	DIM.:	SERIAL No.:
MFR.:	SUR.:35mm	Shielding Angle:



C Range: 0 - 360DEG  
C Interval: 15.0DEG  
Test Speed: HIGH  
Temperature:25.3DEG  
Operators:DAMIN  
Test Date:2022-04-09

γ Range: 0 - 90DEG  
γ Interval: 1.0DEG  
Test System:EVERFINE GO-3000H\_V1 SYSTEM V2.00.411  
Humidity:65.0%  
Test Distance:9.000m [K=1.0000]  
Remarks:

LED Avg.L Report

Test:U:11.932V I:0.4964A P:4.3030W PF:0.7265 Freq:60.00Hz Lamp Flux:389.389x1 lm		
NAME: 486750-MR16-4W-3000K-40°	TYPE:	WEIGHT:
SPEC.:	DIM.:	SERIAL No.:
MFR.:	SUR.:35mm	Shielding Angle:

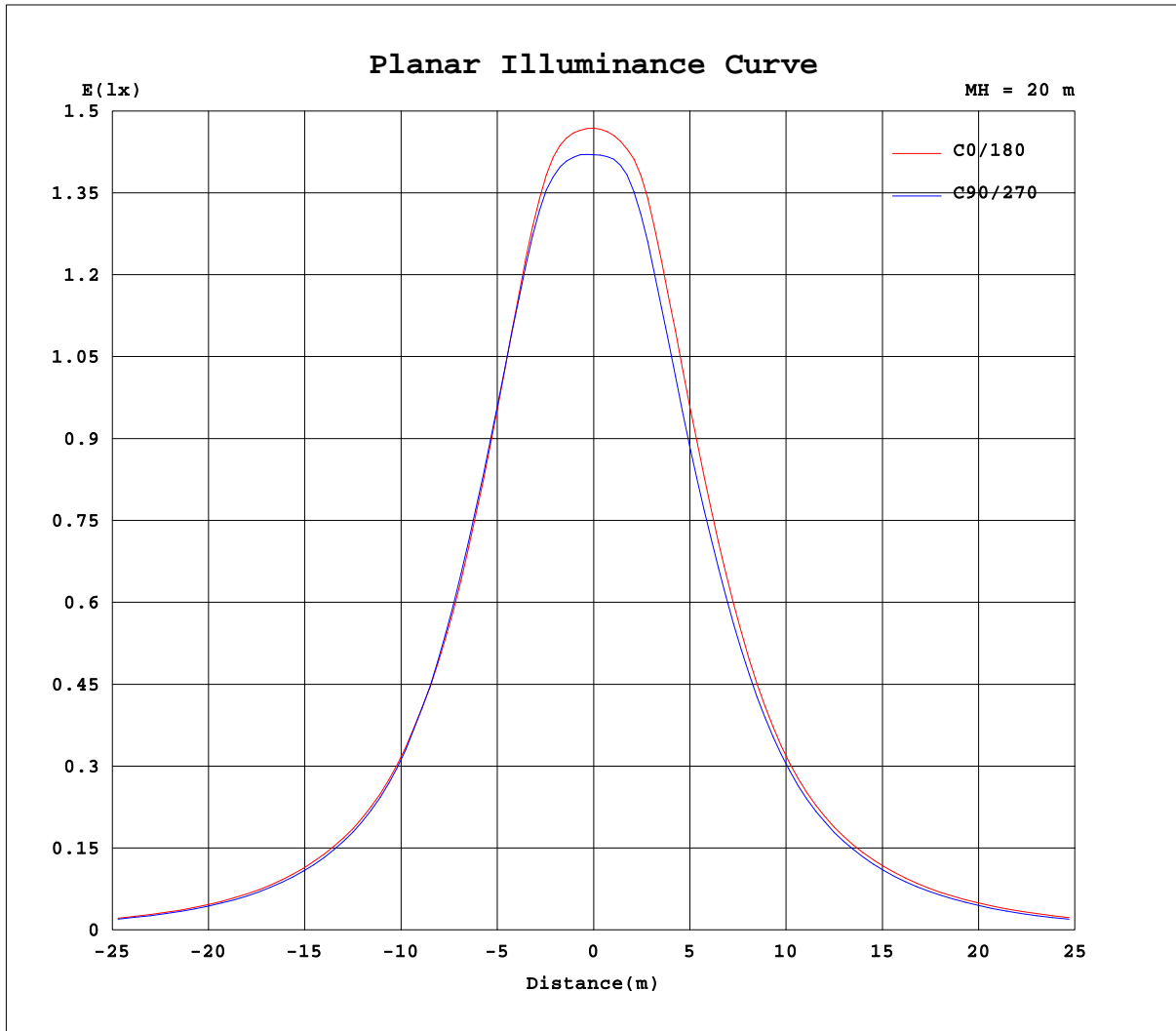
AvgL	cd/m2
L_0~180(65)av	26584
L_0~180(75)av	11973
L_0~180(85)av	8320
L_90~270(65)av	24503
L_90~270(75)av	11828
L_90~270(85)av	8588
L_45(65)av	24254
L_45(75)av	11614
L_45(85)av	8981

Standard: GB/T 29293-2012

C Range: 0 - 360DEG  
C Interval: 15.0DEG  
Test Speed: HIGH  
Temperature:25.3DEG  
Operators:DAMIN  
Test Date:2022-04-09

γ Range: 0 - 90DEG  
γ Interval: 1.0DEG  
Test System:EVERFINE GO-3000H\_V1 SYSTEM V2.00.411  
Humidity:65.0%  
Test Distance:9.000m [K=1.0000]  
Remarks:

Planar Illuminance Curve



C Range: 0 - 360DEG  
C Interval: 15.0DEG  
Test Speed: HIGH  
Temperature: 25.3DEG  
Operators: DAMIN  
Test Date: 2022-04-09

$\gamma$  Range: 0 - 90DEG  
 $\gamma$  Interval: 1.0DEG  
Test System: EVERFINE GO-3000H\_V1 SYSTEM V2.00.411  
Humidity: 65.0%  
Test Distance: 9.000m [K=1.0000]  
Remarks:

**LUMINOUS DISTRIBUTION INTENSITY DATA**

Test:U:11.932V I:0.4964A P:4.3030W PF:0.7265 Freq:60.00Hz Lamp Flux:389.389x1 lm		
NAME: 486750-MR16-4W-3000K-40°	TYPE:	WEIGHT:
SPEC.:	DIM.:	SERIAL No.:
MFR.:	SUR.:35mm	Shielding Angle:

Table--1

UNIT: cd

C(DEG) γ (DEG)	0	15	30	45	60	75	90	105	120	135	150	165	180	195	210	225	240	255	270
0	571	571	571	571	571	571	571	571	571	571	571	571	571	571	571	571	571	571	571
5	566	567	568	572	572	573	569	566	561	559	556	555	563	563	563	559	559	560	562
10	500	502	499	511	512	515	512	505	491	483	471	469	499	495	492	476	475	473	480
15	384	391	390	407	406	410	401	395	379	373	359	356	387	381	381	364	365	361	370
20	275	281	285	302	300	301	289	283	272	269	260	256	280	272	277	268	270	267	272
25	194	196	198	211	209	207	199	194	186	186	179	177	194	191	194	187	190	188	191
30	136	137	136	144	142	141	136	135	130	129	126	126	137	135	137	133	135	133	135
35	98.3	97.9	96.3	101	100.0	100.0	97.3	97.4	94.1	95.4	94.0	92.7	100	98.8	99.6	96.6	98.0	96.2	97.9
40	71.6	71.2	68.7	71.6	71.2	71.8	70.2	71.3	69.2	70.6	70.1	68.9	74.6	73.2	73.3	69.8	70.4	69.3	71.5
45	51.9	51.2	48.8	50.5	50.0	51.0	50.4	51.7	50.4	51.2	50.7	50.3	54.9	53.6	52.9	49.4	49.2	49.0	51.5
50	36.9	35.4	34.2	34.0	34.2	34.5	35.6	35.9	35.9	35.1	35.3	34.6	38.6	38.3	36.5	33.9	32.7	33.6	35.3
55	25.7	24.8	23.6	23.3	23.5	23.7	24.8	25.2	25.0	24.1	24.0	23.8	27.1	26.9	25.1	23.0	22.0	22.8	24.2
60	17.5	17.0	16.0	15.9	15.9	16.2	16.9	17.4	17.0	16.2	15.9	15.8	18.5	18.3	17.0	15.2	14.6	15.1	16.3
65	10.9	10.7	10.1	10.2	10.2	10.4	10.8	11.1	10.6	10.00	9.67	9.47	11.5	11.3	10.4	9.14	8.83	9.09	9.87
70	6.04	5.95	5.71	5.89	5.96	6.06	6.24	6.31	5.91	5.42	5.17	4.94	6.27	6.14	5.57	4.85	4.78	4.93	5.33
75	3.02	3.04	3.03	3.24	3.32	3.35	3.37	3.27	3.03	2.82	2.72	2.54	3.18	3.04	2.85	2.69	2.83	2.78	2.75
80	1.74	1.73	1.74	1.80	1.82	1.85	1.88	1.83	1.81	1.80	1.86	1.76	1.92	1.84	1.76	1.87	2.04	2.00	1.80
85	0.69	0.67	0.68	0.88	0.97	0.94	0.86	0.77	0.66	0.57	0.47	0.29	0.76	0.74	0.69	0.72	0.70	0.78	0.63
90	0.00	0.00	0.00	0.00	0.00	0.00	0.00	0.00	0.00	0.00	0.00	0.00	0.01	0.01	0.01	0.01	0.01	0.01	0.01

C Range: 0 - 360DEG  
 C Interval: 15.0DEG  
 Test Speed: HIGH  
 Temperature:25.3DEG  
 Operators:DAMIN  
 Test Date:2022-04-09

γ Range: 0 - 90DEG  
 γ Interval: 1.0DEG  
 Test System:EVERFINE GO-3000H\_V1 SYSTEM V2.00.411  
 Humidity:65.0%  
 Test Distance:9.000m [K=1.0000]  
 Remarks:

