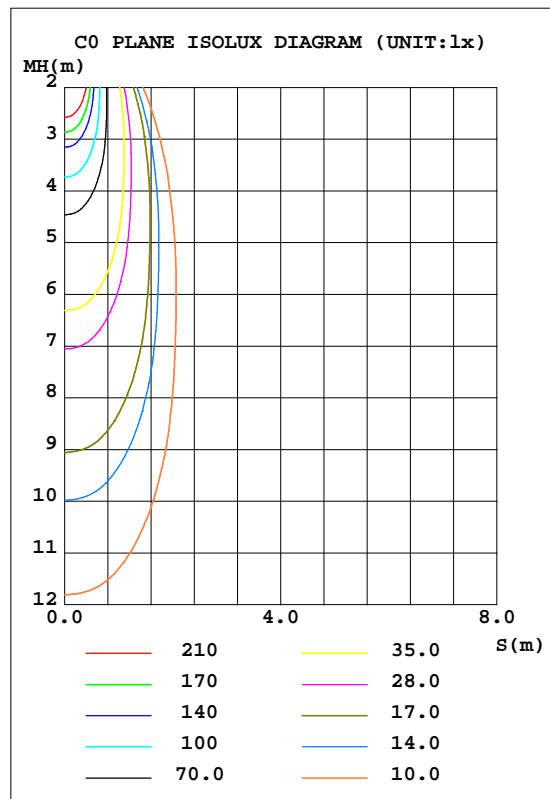
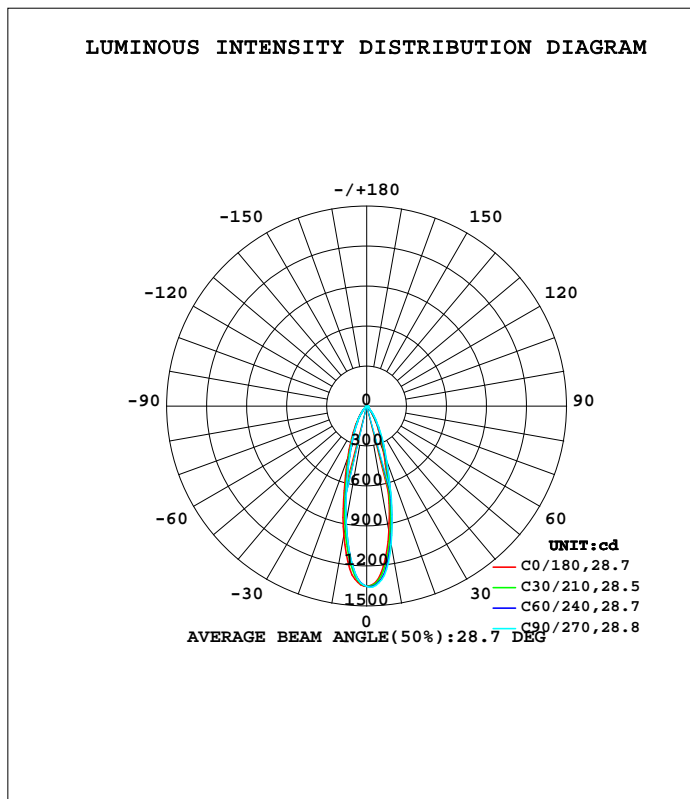


**LUMINAIRE PHOTOMETRIC TEST REPORT**

Test:U:11.853V I:0.6138A P:5.4188W PF:0.7448 Freq:60.00Hz Lamp Flux:507.557x1 lm		
NAME: 486754-MR16-5W-2700K-25°	TYPE:	WEIGHT:
SPEC.:	DIM.:	SERIAL No.:
MFR.:	SUR.:35mm	Shielding Angle:

DATA OF LAMP		PHOTOMETRIC DATA				Eff: 93.67 lm/W
MODEL		I <sub>max</sub> (cd)	1359	S/MH(C0/180)	0.49	
NOMINAL POWER(W)	--	LOR(%)	100.0	S/MH(C90/270)	0.44	
RATED VOLTAGE(V)	--	TOTAL FLUX(lm)	507.56	η UP,DN(C0-180)	0.0,52.2	
NOMINAL FLUX(lm)	507.557	CIE CLASS	DIRECT	η UP,DN(C180-360)	0.0,47.8	
LAMPS INSIDE	1	η up(%)	0.0	CIBSE SHR NOM	0.50	
TEST VOLTAGE(V)	--	η down(%)	100.0	CIBSE SHR MAX	0.50	



C Range: 0 - 360DEG  
 C Interval: 15.0DEG  
 Test Speed: HIGH  
 Temperature:25.3DEG  
 Operators:DAMIN  
 Test Date:2022-04-10

γ Range: 0 - 90DEG  
 γ Interval: 1.0DEG  
 Test System:EVERFINE GO-3000H\_V1 SYSTEM V2.00.411  
 Humidity:65.0%  
 Test Distance:9.000m [K=1.0000]  
 Remarks:

ZONAL FLUX DIAGRAM

ZONAL FLUX DIAGRAM:

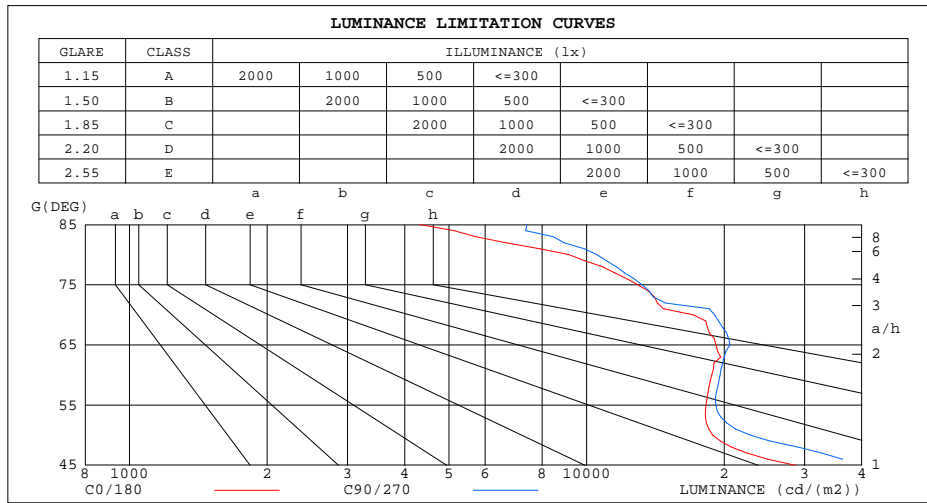
$\gamma$	C0	C45	C90	C135	C180	C225	C270	C315	$\gamma$	$\Phi$ zone	$\Phi$ total	\$lum,lamp
10	960.4	1025	1055	1001	988.1	910.6	892.9	949.4	0- 10	110.8	110.8	21.8,21.8
20	376.2	425.0	443.3	422.6	420.7	367.3	362.8	380.0	10- 20	177.3	288.1	56.8,56.8
30	143.5	163.5	178.2	172.6	169.5	147.4	148.2	148.4	20- 30	117.8	405.9	80,80
40	41.86	53.22	60.77	56.92	53.48	45.46	46.73	45.84	30- 40	60.62	466.5	91.9,91.9
50	11.77	13.15	14.77	13.84	12.00	10.28	12.49	12.17	40- 50	19.67	486.2	95.8,95.8
60	9.118	9.797	9.840	9.925	8.623	7.966	9.752	9.427	50- 60	9.407	495.6	97.6,97.6
70	5.674	6.592	6.558	6.531	5.874	4.576	5.352	5.325	60- 70	7.812	503.4	99.2,99.2
80	1.541	1.913	1.837	1.758	1.610	1.328	1.663	1.626	70- 80	3.577	506.9	99.9,99.9
90	0.0101	0.0059	0.0075	0.0091	0.0202	0.0228	0.0217	0.0228	80- 90	0.6094	507.6	100,100
100									90-100			
110									100-110			
120									110-120			
130									120-130			
140									130-140			
150									140-150			
160									150-160			
170									160-170			
180									170-180			
DEG	LUMINOUS INTENSITY:cd									UNIT:lm		

C Range: 0 - 360DEG  
C Interval: 15.0DEG  
Test Speed: HIGH  
Temperature:25.3DEG  
Operators:DAMIN  
Test Date:2022-04-10

$\gamma$  Range: 0 - 90DEG  
 $\gamma$  Interval: 1.0DEG  
Test System:EVERFINE GO-3000H\_V1 SYSTEM V2.00.411  
Humidity:65.0%  
Test Distance:9.000m [K=1.0000]  
Remarks:

**LUMINANCE LIMITATION CURVES**

Test:U:11.853V I:0.6138A P:5.4188W PF:0.7448 Freq:60.00Hz Lamp Flux:507.557x1 lm		
NAME: 486754-MR16-5W-2700K-25°	TYPE:	WEIGHT:
SPEC.:	DIM.:	SERIAL No.:
MFR.:	SUR.:35mm	Shielding Angle:



LUMINANCE cd/(m2)		
G(DEG)	C0/180	C90/270
85	4308	7405
80	9151	10526
75	12944	13218
70	17105	19078
65	19190	20604
60	18803	19583
55	18253	19188
50	18881	22858
45	28613	41750

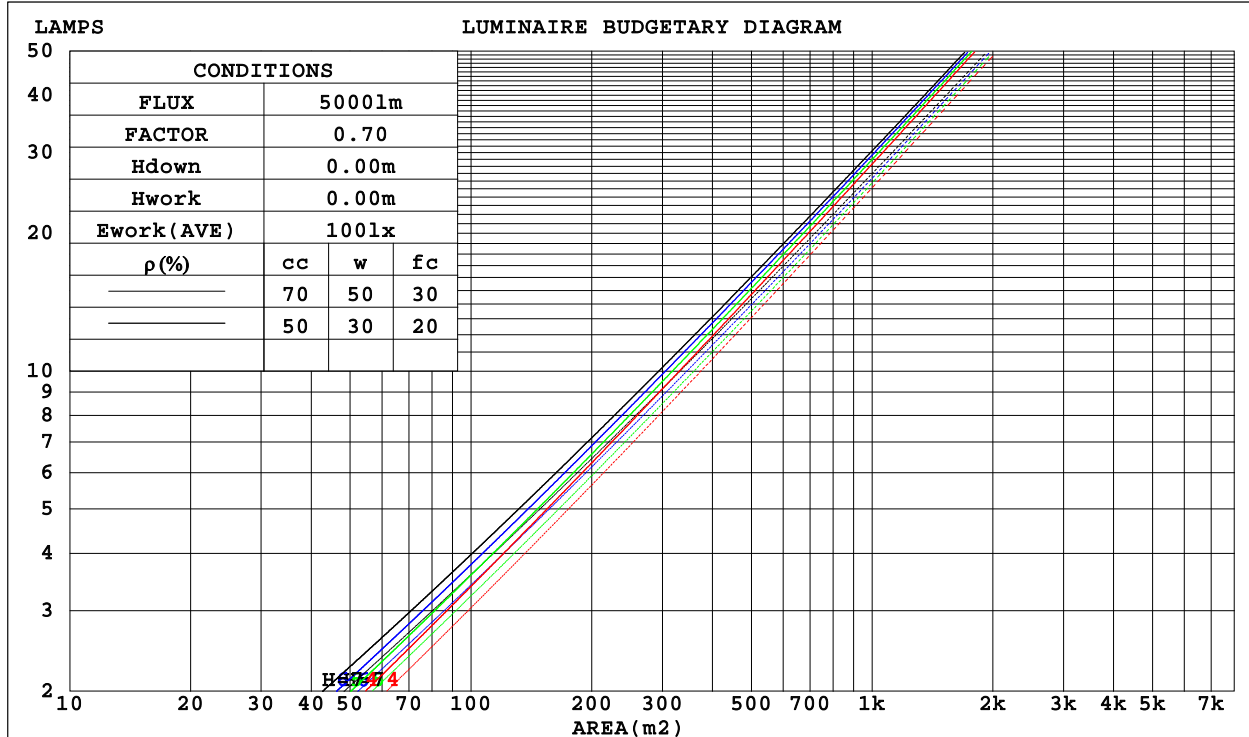
C Range: 0 - 360DEG  
C Interval: 15.0DEG  
Test Speed: HIGH  
Temperature:25.3DEG  
Operators:DAMIN  
Test Date:2022-04-10

γ Range: 0 - 90DEG  
γ Interval: 1.0DEG  
Test System:EVERFINE GO-3000H\_V1 SYSTEM V2.00.411  
Humidity:65.0%  
Test Distance:9.000m [K=1.0000]  
Remarks:

**CU AND LUMINAIRE BUDGETARY ESTIMATE DIAGRAM**

Test:U:11.853V I:0.6138A P:5.4188W PF:0.7448 Freq:60.00Hz Lamp Flux:507.557x1 lm		
NAME: 486754-MR16-5W-2700K-25°	TYPE:	WEIGHT:
SPEC.:	DIM.:	SERIAL No.:
MFR.:	SUR.:35mm	Shielding Angle:

ρcc	80%			70%			50%			30%			10%			0
ρw	50%	30%	10%	50%	30%	10%	50%	30%	10%	50%	30%	10%	50%	30%	10%	0
ρfc	20%			20%			20%			20%			20%			0
RCR	RCR:Room Cavity Ratio															
	Coefficients of Utilization(CU)															
0.0	1.19	1.19	1.19	1.16	1.16	1.16	1.11	1.11	1.11	1.06	1.06	1.06	1.02	1.02	1.02	.00
1.0	1.11	1.09	1.07	1.09	1.07	1.05	1.05	1.03	1.02	1.01	1.00	.99	.98	.97	.96	.94
2.0	1.04	1.01	.97	1.03	.99	.96	.99	.97	.94	.96	.94	.92	.94	.92	.90	.89
3.0	.98	.94	.90	.97	.93	.89	.94	.91	.88	.92	.89	.86	.90	.87	.85	.84
4.0	.93	.88	.84	.92	.87	.83	.89	.86	.82	.88	.84	.81	.86	.83	.81	.79
5.0	.88	.83	.79	.87	.82	.78	.85	.81	.78	.84	.80	.77	.82	.79	.76	.75
6.0	.84	.78	.74	.83	.78	.74	.81	.77	.74	.80	.76	.73	.79	.75	.73	.71
7.0	.80	.74	.71	.79	.74	.70	.78	.73	.70	.77	.73	.70	.76	.72	.69	.68
8.0	.76	.71	.67	.76	.71	.67	.75	.70	.67	.74	.70	.67	.73	.69	.66	.65
9.0	.73	.68	.64	.72	.68	.64	.72	.67	.64	.71	.67	.64	.70	.66	.64	.62
10.0	.70	.65	.62	.70	.65	.61	.69	.64	.61	.68	.64	.61	.67	.64	.61	.60



C Range: 0 - 360DEG  
 C Interval: 15.0DEG  
 Test Speed: HIGH  
 Temperature:25.3DEG  
 Operators:DAMIN  
 Test Date:2022-04-10

γ Range: 0 - 90DEG  
 γ Interval: 1.0DEG  
 Test System:EVERFINE GO-3000H\_V1 SYSTEM V2.00.411  
 Humidity:65.0%  
 Test Distance:9.000m [K=1.0000]  
 Remarks:

**WEC AND CCEC**

Test:U:11.853V I:0.6138A P:5.4188W PF:0.7448 Freq:60.00Hz Lamp Flux:507.557x1 lm		
NAME: 486754-MR16-5W-2700K-25°	TYPE:	WEIGHT:
SPEC.:	DIM.:	SERIAL No.:
MFR.:	SUR.:35mm	Shielding Angle:

pcc	80%			70%			50%			30%			10%			0
pw	50%	30%	10%	50%	30%	10%	50%	30%	10%	50%	30%	10%	50%	30%	10%	0
pfc	20%			20%			20%			20%			20%			0
RCR	RCR:Room Cavity Ratio						Wall Exitance Coefficients(WEC)									
0.0																
1.0	.169	.096	.030	.162	.092	.029	.149	.086	.027	.138	.079	.026	.127	.074	.024	
2.0	.159	.087	.027	.154	.085	.026	.143	.080	.025	.133	.075	.023	.124	.070	.022	
3.0	.150	.080	.024	.145	.078	.023	.136	.074	.022	.128	.070	.022	.120	.067	.021	
4.0	.141	.073	.022	.137	.072	.021	.129	.069	.021	.122	.066	.020	.116	.063	.019	
5.0	.133	.068	.020	.130	.067	.019	.123	.064	.019	.117	.062	.018	.111	.060	.018	
6.0	.126	.063	.018	.123	.062	.018	.118	.060	.018	.112	.058	.017	.107	.056	.017	
7.0	.120	.059	.017	.117	.059	.017	.112	.057	.016	.108	.055	.016	.103	.054	.016	
8.0	.114	.056	.016	.112	.055	.016	.108	.054	.015	.103	.052	.015	.099	.051	.015	
9.0	.109	.053	.015	.107	.052	.015	.103	.051	.014	.099	.050	.014	.096	.049	.014	
10.0	.104	.050	.014	.103	.050	.014	.099	.049	.014	.096	.047	.014	.092	.047	.013	

pcc	80%			70%			50%			30%			10%			0
pw	50%	30%	10%	50%	30%	10%	50%	30%	10%	50%	30%	10%	50%	30%	10%	0
pfc	20%			20%			20%			20%			20%			0
RCR	RCR:Room Cavity Ratio						Ceiling Cavity Exitance Coefficients(CCEC)									
0.0	.190	.190	.190	.163	.163	.163	.111	.111	.111	.064	.064	.064	.020	.020	.020	
1.0	.171	.157	.146	.146	.135	.125	.100	.093	.087	.057	.054	.050	.018	.017	.016	
2.0	.155	.133	.114	.132	.114	.099	.091	.079	.069	.052	.046	.040	.017	.015	.013	
3.0	.141	.113	.091	.121	.098	.079	.083	.068	.056	.048	.040	.033	.015	.013	.011	
4.0	.130	.099	.074	.112	.085	.065	.077	.059	.046	.044	.035	.027	.014	.011	.009	
5.0	.121	.087	.062	.104	.075	.054	.071	.052	.038	.041	.031	.022	.013	.010	.007	
6.0	.113	.077	.052	.097	.067	.045	.067	.047	.032	.039	.028	.019	.013	.009	.006	
7.0	.106	.069	.044	.091	.060	.038	.063	.042	.027	.036	.025	.016	.012	.008	.005	
8.0	.100	.063	.038	.086	.055	.033	.059	.038	.023	.034	.023	.014	.011	.007	.005	
9.0	.094	.058	.033	.081	.050	.029	.056	.035	.020	.033	.021	.012	.011	.007	.004	
10.0	.089	.053	.029	.077	.046	.025	.053	.032	.018	.031	.019	.011	.010	.006	.004	

C Range: 0 - 360DEG  
 C Interval: 15.0DEG  
 Test Speed: HIGH  
 Temperature:25.3DEG  
 Operators:DAMIN  
 Test Date:2022-04-10

γ Range: 0 - 90DEG  
 γ Interval: 1.0DEG  
 Test System:EVERFINE GO-3000H\_V1 SYSTEM V2.00.411  
 Humidity:65.0%  
 Test Distance:9.000m [K=1.0000]  
 Remarks:

UGR(Unified Glare Rating) Table

Test:U:11.853V I:0.6138A P:5.4188W PF:0.7448 Freq:60.00Hz Lamp Flux:507.557x1 lm										
NAME: 486754-MR16-5W-2700K-25°					TYPE:			WEIGHT:		
SPEC.:					DIM.:			SERIAL No.:		
MFR.:					SUR.:35mm			Shielding Angle:		
ceiling/cavity	0.7	0.7	0.5	0.5	0.3	0.7	0.7	0.5	0.5	0.3
walls	0.5	0.3	0.5	0.3	0.3	0.5	0.3	0.5	0.3	0.3
working plane	0.2	0.2	0.2	0.2	0.2	0.2	0.2	0.2	0.2	0.2
Room dimensions	Viewed crosswise					Viewed endwise				
x = 2H y = 2H	19.4	20.3	19.7	20.5	20.6	20.3	21.2	20.5	21.3	21.5
3H	20.1	20.9	20.4	21.1	21.3	20.9	21.7	21.2	21.9	22.1
4H	20.3	21.0	20.6	21.3	21.5	21.1	21.8	21.4	22.1	22.3
6H	20.4	21.1	20.7	21.3	21.5	21.2	21.9	21.5	22.1	22.3
8H	20.3	21.0	20.7	21.3	21.5	21.2	21.8	21.5	22.1	22.4
12H	20.3	21.0	20.6	21.2	21.5	21.1	21.8	21.5	22.1	22.3
4H 2H	19.7	20.4	19.9	20.6	20.8	20.4	21.2	20.7	21.4	21.6
3H	20.5	21.2	20.8	21.4	21.7	21.2	21.9	21.6	22.2	22.4
4H	20.8	21.4	21.1	21.7	22.0	21.5	22.1	21.8	22.4	22.7
6H	20.9	21.4	21.3	21.7	22.1	21.6	22.1	22.0	22.5	22.8
8H	20.9	21.4	21.3	21.7	22.1	21.6	22.1	22.0	22.5	22.8
12H	20.9	21.3	21.3	21.7	22.1	21.6	22.1	22.0	22.4	22.8
8H 4H	20.8	21.3	21.2	21.7	22.0	21.5	22.0	21.9	22.3	22.7
6H	21.0	21.4	21.4	21.8	22.2	21.7	22.1	22.1	22.5	22.9
8H	21.0	21.4	21.5	21.8	22.2	21.8	22.1	22.2	22.5	23.0
12H	21.0	21.3	21.5	21.8	22.2	21.8	22.1	22.2	22.5	23.0
12H 4H	20.8	21.3	21.2	21.6	22.0	21.5	21.9	21.9	22.3	22.7
6H	21.0	21.4	21.5	21.8	22.2	21.7	22.0	22.1	22.5	22.9
8H	21.0	21.3	21.5	21.8	22.2	21.7	22.0	22.2	22.5	23.0
Variations with the observer position at spacings:										
S = 1.0H	+ 1.0 / - 1.2					+ 1.5 / - 1.8				
1.5H	+ 2.4 / - 1.8					+ 3.0 / - 1.7				
2.0H	+ 0.7 / - 0.7					+ 1.8 / - 0.8				

CIE Pub.117, 507.6 lm Total Lamp Luminous Flux Corrected (8log(F/F0) = -2.4)  
 Area: 0.001 m2

C Range: 0 - 360DEG  
 C Interval: 15.0DEG  
 Test Speed: HIGH  
 Temperature:25.3DEG  
 Operators:DAMIN  
 Test Date:2022-04-10

γ Range: 0 - 90DEG  
 γ Interval: 1.0DEG  
 Test System:EVERFINE GO-3000H\_V1 SYSTEM V2.00.411  
 Humidity:65.0%  
 Test Distance:9.000m [K=1.0000]  
 Remarks:

UTILIZATION FACTORS TABLE

Test:U:11.853V I:0.6138A P:5.4188W PF:0.7448 Freq:60.00Hz Lamp Flux:507.557x1 lm		
NAME: 486754-MR16-5W-2700K-25°	TYPE:	WEIGHT:
SPEC.:	DIM.:	SERIAL No.:
MFR.:	SUR.:35mm	Shielding Angle:

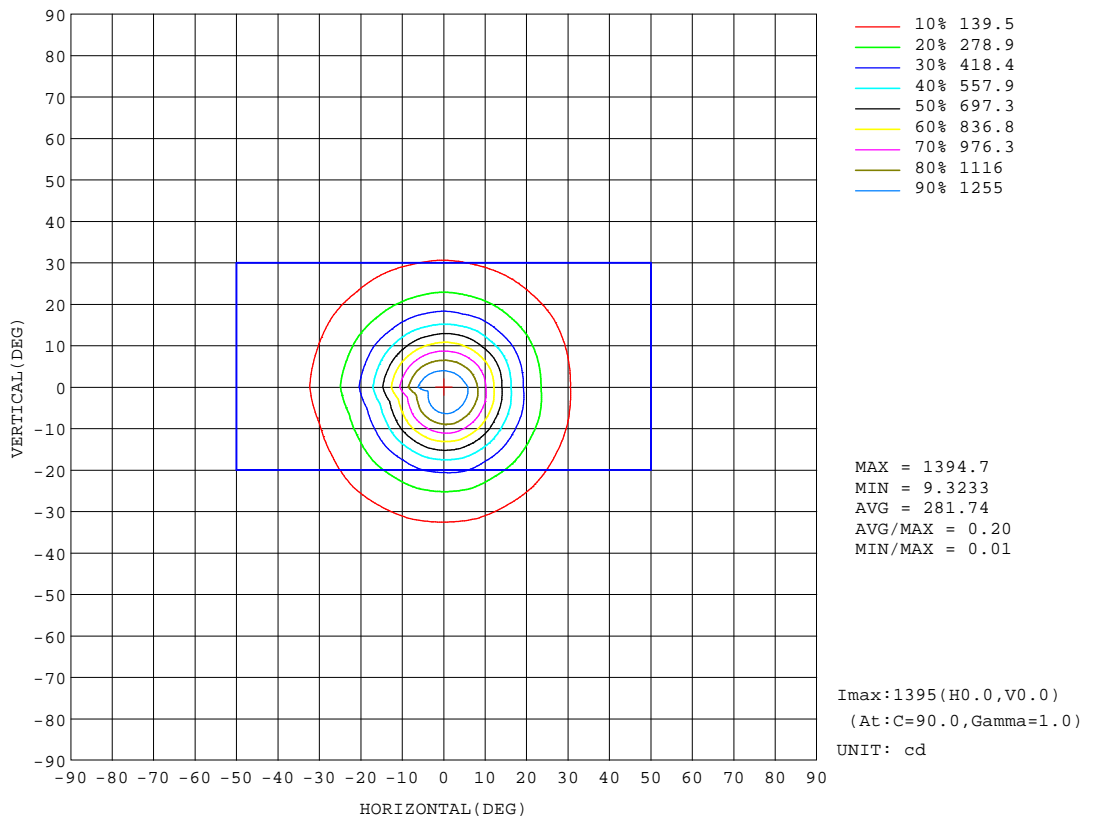
REFLECTANCE										
Ceiling	0.8	0.8	0.8	0.7	0.7	0.7	0.5	0.5	0.5	0
Walls	0.7	0.5	0.3	0.7	0.5	0.3	0.7	0.5	0.3	0
Working plane	0.2	0.2	0.2	0.2	0.2	0.2	0.2	0.2	0.2	0
ROOM INDEX	UTILIZATION FACTORS(PERCENT) k(RI) x RCR = 5									
k = 0.60	87	80	76	86	80	76	85	80	76	72
0.80	94	88	84	93	88	84	92	87	84	80
1.00	98	93	89	98	92	89	96	92	88	84
1.25	102	97	94	101	97	93	99	95	92	88
1.50	105	100	97	104	100	96	102	98	95	91
2.00	108	104	100	107	103	100	104	101	98	93
2.50	110	106	103	108	105	102	105	102	100	94
3.00	111	108	105	110	106	104	106	104	102	95
4.00	114	111	108	111	109	107	108	106	104	97
5.00	115	113	111	113	111	109	109	107	106	98
ROOM INDEX	UF(total)									Direct
According to DIN EN 13032-2 2004			Suspended				SHRNOM = 1.25			

C Range: 0 - 360DEG  
 C Interval: 15.0DEG  
 Test Speed: HIGH  
 Temperature:25.3DEG  
 Operators:DAMIN  
 Test Date:2022-04-10

γ Range: 0 - 90DEG  
 γ Interval: 1.0DEG  
 Test System:EVERFINE GO-3000H\_V1 SYSTEM V2.00.411  
 Humidity:65.0%  
 Test Distance:9.000m [K=1.0000]  
 Remarks:

**ISOCANDELA DIAGRAM**

Test:U:11.853V I:0.6138A P:5.4188W PF:0.7448 Freq:60.00Hz Lamp Flux:507.557x1 lm		
NAME: 486754-MR16-5W-2700K-25°	TYPE:	WEIGHT:
SPEC.:	DIM.:	SERIAL No.:
MFR.:	SUR.:35mm	Shielding Angle:



C Range: 0 - 360DEG  
 C Interval: 15.0DEG  
 Test Speed: HIGH  
 Temperature:25.3DEG  
 Operators:DAMIN  
 Test Date:2022-04-10

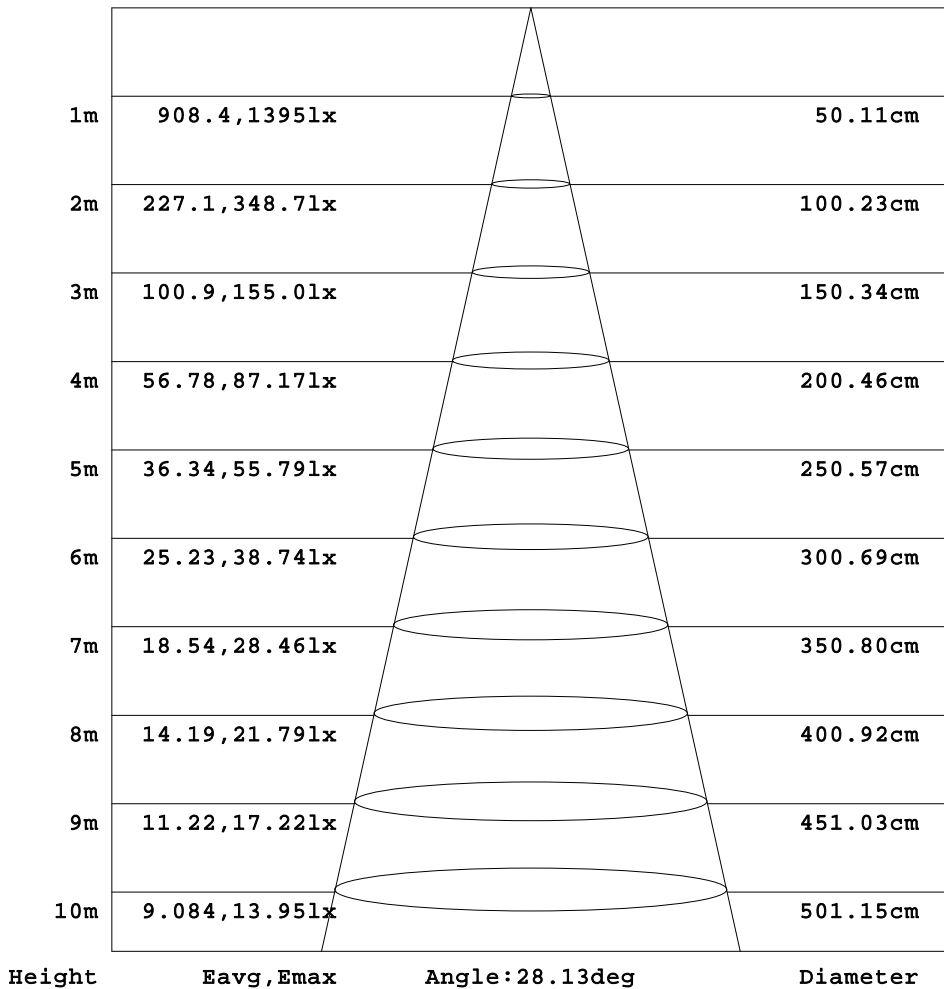
γ Range: 0 - 90DEG  
 γ Interval: 1.0DEG  
 Test System:EVERFINE GO-3000H\_V1 SYSTEM V2.00.411  
 Humidity:65.0%  
 Test Distance:9.000m [K=1.0000]  
 Remarks:



**AAI Figure**

Test:U:11.853V I:0.6138A P:5.4188W PF:0.7448 Freq:60.00Hz Lamp Flux:507.557x1 lm		
NAME: 486754-MR16-5W-2700K-25°	TYPE:	WEIGHT:
SPEC.:	DIM.:	SERIAL No.:
MFR.:	SUR.:35mm	Shielding Angle:

Flux out:204.9 lm



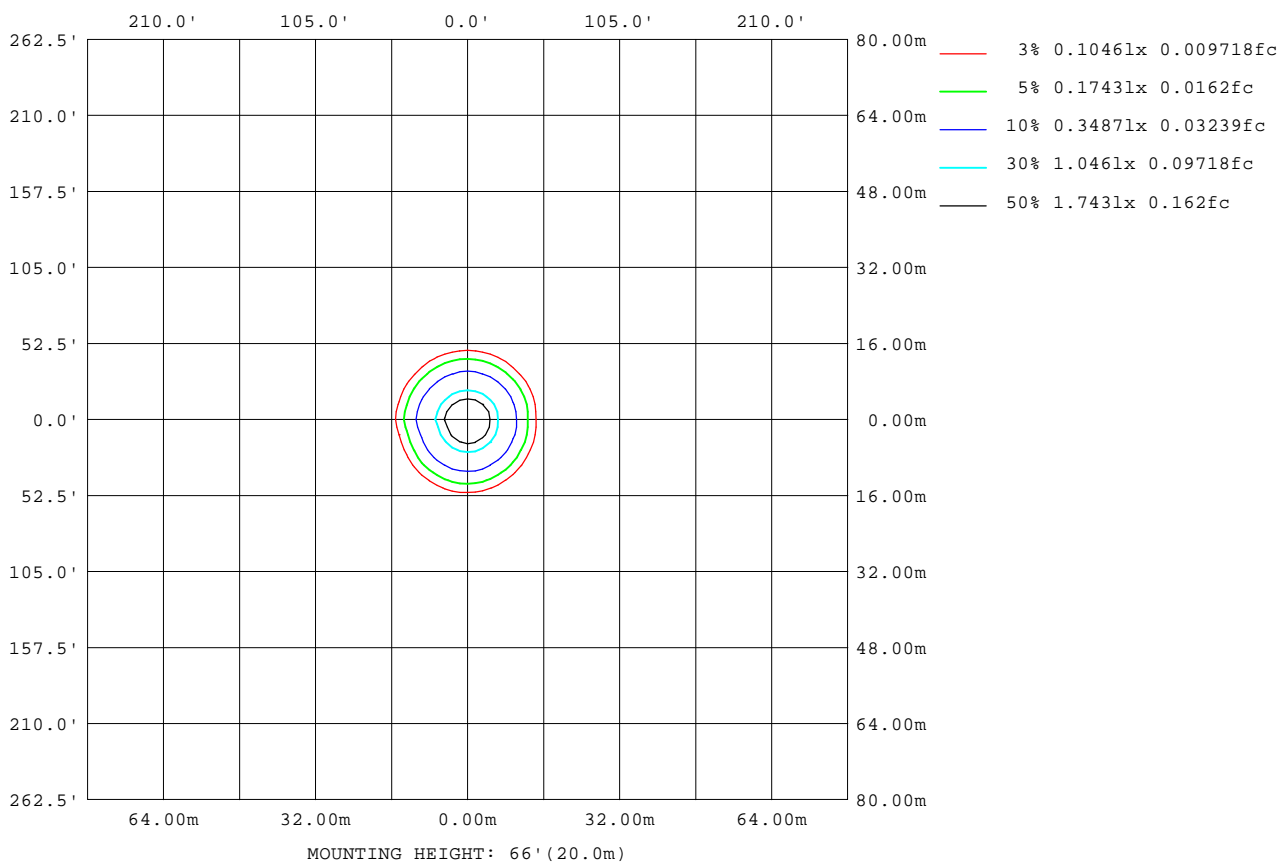
Note:The Curves indicate the illuminated area and the average illumination when the luminaire is at different distance.

C Range: 0 - 360DEG  
C Interval: 15.0DEG  
Test Speed: HIGH  
Temperature:25.3DEG  
Operators:DAMIN  
Test Date:2022-04-10

γ Range: 0 - 90DEG  
γ Interval: 1.0DEG  
Test System:EVERFINE GO-3000H\_V1 SYSTEM V2.00.411  
Humidity:65.0%  
Test Distance:9.000m [K=1.0000]  
Remarks:

**ISOLUX DIAGRAM**

Test:U:11.853V I:0.6138A P:5.4188W PF:0.7448 Freq:60.00Hz Lamp Flux:507.557x1 lm		
NAME: 486754-MR16-5W-2700K-25°	TYPE:	WEIGHT:
SPEC.:	DIM.:	SERIAL No.:
MFR.:	SUR.:35mm	Shielding Angle:



C Range: 0 - 360DEG  
 C Interval: 15.0DEG  
 Test Speed: HIGH  
 Temperature:25.3DEG  
 Operators:DAMIN  
 Test Date:2022-04-10

γ Range: 0 - 90DEG  
 γ Interval: 1.0DEG  
 Test System:EVERFINE GO-3000H\_V1 SYSTEM V2.00.411  
 Humidity:65.0%  
 Test Distance:9.000m [K=1.0000]  
 Remarks:

LED Avg.L Report

Test:U:11.853V I:0.6138A P:5.4188W PF:0.7448 Freq:60.00Hz Lamp Flux:507.557x1 lm		
NAME: 486754-MR16-5W-2700K-25°	TYPE:	WEIGHT:
SPEC.:	DIM.:	SERIAL No.:
MFR.:	SUR.:35mm	Shielding Angle:

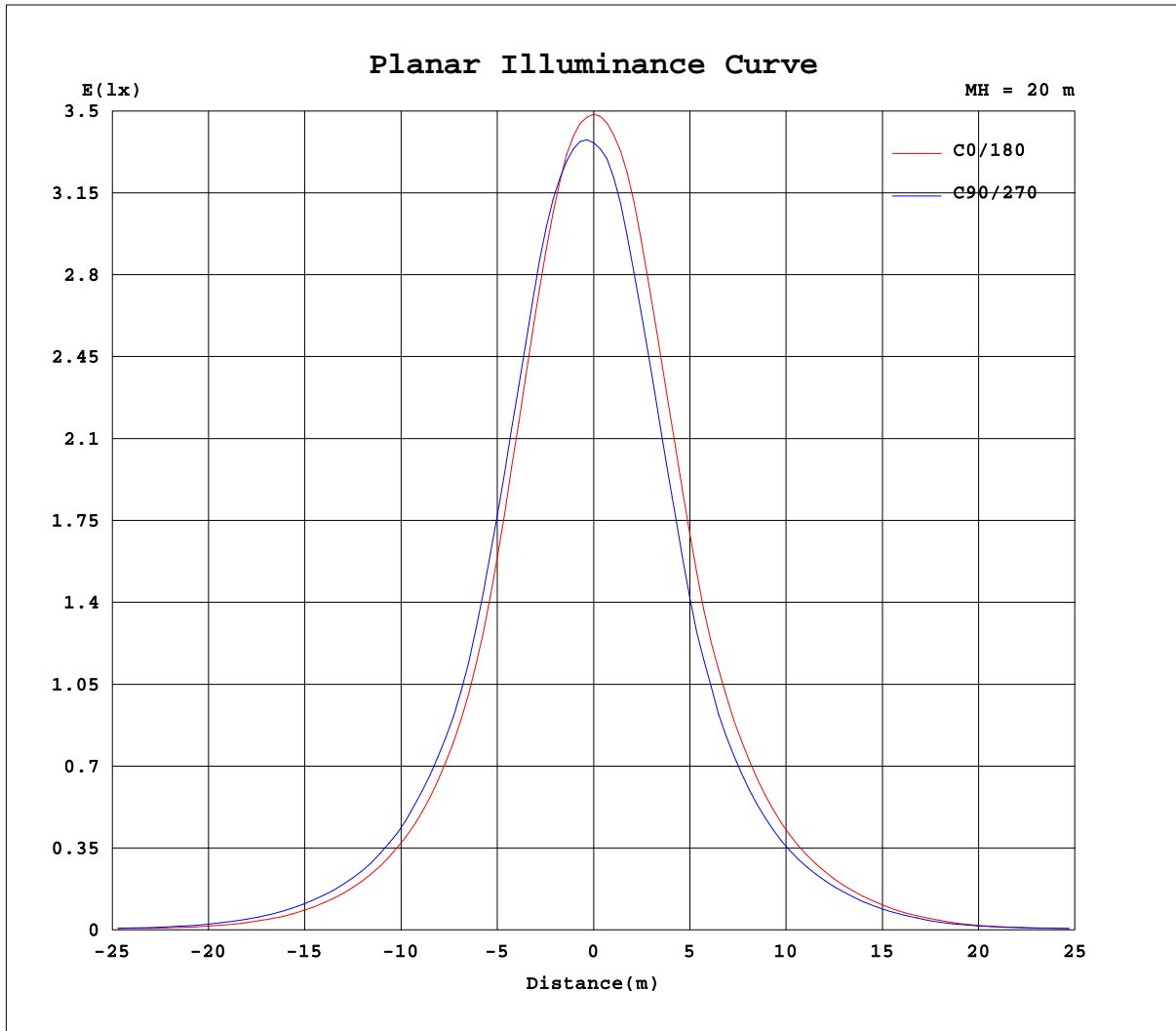
AvgL	cd/m2
L_0~180(65)av	18317
L_0~180(75)av	12673
L_0~180(85)av	5183
L_90~270(65)av	20054
L_90~270(75)av	13283
L_90~270(85)av	5688
L_45(65)av	19102
L_45(75)av	12684
L_45(85)av	5487

Standard: GB/T 29293-2012

C Range: 0 - 360DEG  
C Interval: 15.0DEG  
Test Speed: HIGH  
Temperature:25.3DEG  
Operators:DAMIN  
Test Date:2022-04-10

γ Range: 0 - 90DEG  
γ Interval: 1.0DEG  
Test System:EVERFINE GO-3000H\_V1 SYSTEM V2.00.411  
Humidity:65.0%  
Test Distance:9.000m [K=1.0000]  
Remarks:

Planar Illuminance Curve



C Range: 0 - 360DEG  
C Interval: 15.0DEG  
Test Speed: HIGH  
Temperature: 25.3DEG  
Operators: DAMIN  
Test Date: 2022-04-10

$\gamma$  Range: 0 - 90DEG  
 $\gamma$  Interval: 1.0DEG  
Test System: EVERFINE GO-3000H\_V1 SYSTEM V2.00.411  
Humidity: 65.0%  
Test Distance: 9.000m [K=1.0000]  
Remarks:

LUMINOUS DISTRIBUTION INTENSITY DATA

Test:U:11.853V I:0.6138A P:5.4188W PF:0.7448 Freq:60.00Hz Lamp Flux:507.557x1 lm		
NAME: 486754-MR16-5W-2700K-25°	TYPE:	WEIGHT:
SPEC.:	DIM.:	SERIAL No.:
MFR.:	SUR.:35mm	Shielding Angle:

Table--1 UNIT: cd

C(DEG) γ (DEG)	0	15	30	45	60	75	90	105	120	135	150	165	180	195	210	225	240	255	270
0	1353	1353	1353	1353	1353	1353	1353	1353	1353	1353	1353	1353	1353	1353	1353	1353	1353	1353	1353
5	1256	1271	1277	1288	1297	1306	1308	1305	1295	1280	1259	1241	1270	1251	1235	1219	1210	1203	1207
10	960	990	1005	1025	1041	1058	1055	1043	1021	1001	964	944	988	959	935	911	897	887	893
15	615	638	654	686	702	718	718	710	689	670	637	618	658	629	608	587	574	565	568
20	376	401	409	425	434	454	443	444	428	423	404	399	421	399	388	367	362	357	363
25	234	249	252	264	269	286	286	286	275	270	256	252	269	254	245	230	229	225	232
30	144	151	155	163	167	179	178	180	174	173	161	159	169	161	157	147	148	145	148
35	83.0	88.3	91.1	98.8	103	109	109	112	107	106	97.7	95.1	102	96.2	94.1	89.4	89.9	86.9	89.8
40	41.9	45.5	48.3	53.2	55.7	61.1	60.8	62.8	59.1	56.9	51.6	49.8	53.5	49.0	49.1	45.5	45.7	43.9	46.7
45	19.6	21.4	23.3	24.7	26.5	29.2	29.7	28.8	27.8	26.1	23.9	21.8	23.1	22.5	20.9	19.7	19.4	20.3	21.0
50	11.8	13.2	13.7	13.1	13.8	15.2	14.8	14.0	13.9	13.8	12.9	12.0	12.0	11.8	11.1	10.3	10.9	11.6	12.5
55	10.2	11.1	11.4	10.9	11.0	11.9	11.1	10.5	10.9	11.2	10.6	10.01	9.60	9.58	9.15	8.74	9.34	9.82	10.9
60	9.12	9.85	10.1	9.80	9.93	10.5	9.84	9.52	9.70	9.93	9.55	9.12	8.62	8.59	8.29	7.97	8.41	8.77	9.75
65	7.87	8.52	8.77	8.70	9.02	9.33	8.75	8.56	8.57	8.66	8.22	8.08	7.62	7.44	7.17	6.94	7.16	7.31	8.20
70	5.67	6.34	6.65	6.59	6.81	6.98	6.56	6.49	6.61	6.53	6.15	5.78	5.87	5.43	4.91	4.58	4.65	4.51	5.35
75	3.25	3.39	3.47	3.65	3.88	3.91	3.44	3.52	3.51	3.42	3.28	3.28	3.31	3.05	2.92	2.76	2.68	2.73	3.44
80	1.54	1.63	1.79	1.91	1.97	2.08	1.84	1.73	1.73	1.76	1.64	1.57	1.61	1.48	1.42	1.33	1.24	1.25	1.66
85	0.36	0.42	0.48	0.51	0.58	0.65	0.65	0.61	0.61	0.58	0.49	0.43	0.54	0.47	0.42	0.36	0.33	0.32	0.34
90	0.01	0.01	0.01	0.01	0.01	0.01	0.01	0.01	0.01	0.01	0.01	0.01	0.02	0.02	0.02	0.02	0.02	0.02	0.02

C Range: 0 - 360DEG  
 C Interval: 15.0DEG  
 Test Speed: HIGH  
 Temperature:25.3DEG  
 Operators:DAMIN  
 Test Date:2022-04-10  
 γ Range: 0 - 90DEG  
 γ Interval: 1.0DEG  
 Test System:EVERFINE GO-3000H\_V1 SYSTEM V2.00.411  
 Humidity:65.0%  
 Test Distance:9.000m [K=1.0000]  
 Remarks:

LUMINOUS DISTRIBUTION INTENSITY DATA

Test:U:11.853V I:0.6138A P:5.4188W PF:0.7448 Freq:60.00Hz Lamp Flux:507.557x1 lm		
NAME: 486754-MR16-5W-2700K-25°	TYPE:	WEIGHT:
SPEC.:	DIM.:	SERIAL No.:
MFR.:	SUR.:35mm	Shielding Angle:

Table--2

UNIT: cd

C(DEG) γ (DEG)	285	300	315	330	345														
0	1353	1353	1353	1353	1353														
5	1215	1231	1248	1272	1288														
10	904	925	949	981	1003														
15	577	597	613	643	656														
20	358	375	380	399	403														
25	230	234	237	248	248														
30	145	148	148	155	154														
35	87.7	90.3	90.1	93.0	91.9														
40	45.8	47.2	45.8	47.6	47.2														
45	20.9	20.0	20.9	21.2	21.6														
50	11.7	11.5	12.2	12.2	11.3														
55	10.3	10.07	10.4	10.4	9.42														
60	9.31	9.25	9.43	9.23	8.53														
65	7.92	7.91	7.99	7.92	7.55														
70	5.32	5.18	5.33	5.69	5.64														
75	3.41	3.33	3.30	3.26	3.24														
80	1.65	1.60	1.63	1.69	1.63														
85	0.36	0.40	0.45	0.50	0.49														
90	0.02	0.02	0.02	0.02	0.02														

C Range: 0 - 360DEG  
 C Interval: 15.0DEG  
 Test Speed: HIGH  
 Temperature:25.3DEG  
 Operators:DAMIN  
 Test Date:2022-04-10

γ Range: 0 - 90DEG  
 γ Interval: 1.0DEG  
 Test System:EVERFINE GO-3000H\_V1 SYSTEM V2.00.411  
 Humidity:65.0%  
 Test Distance:9.000m [K=1.0000]  
 Remarks: