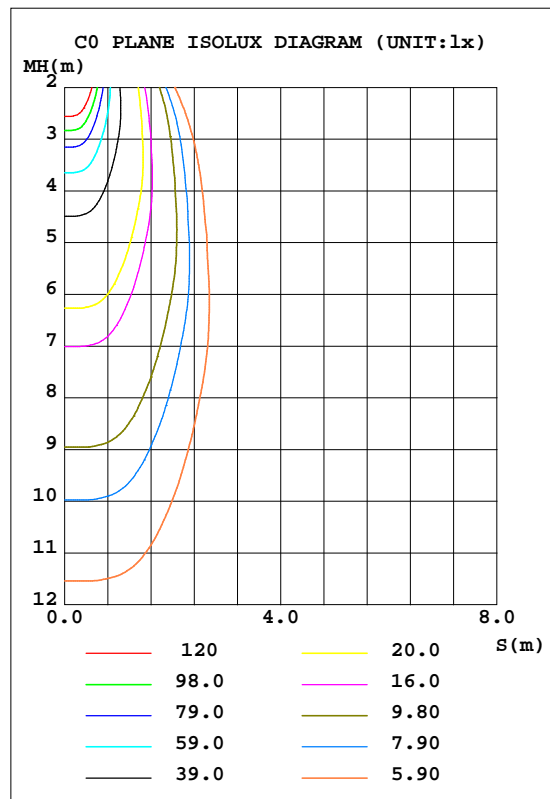
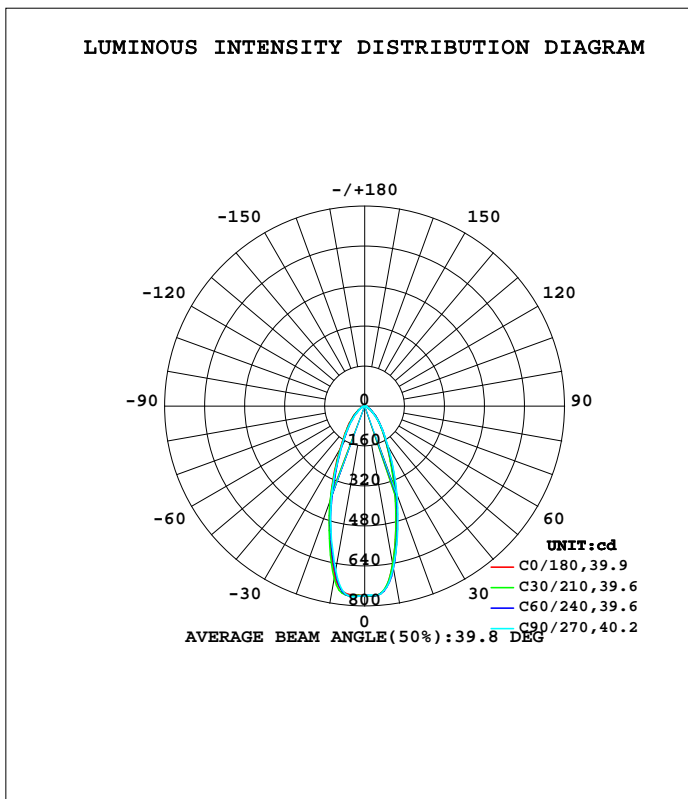


LUMINAIRE PHOTOMETRIC TEST REPORT

Test:U:11.857V I:0.6844A P:6.0319W PF:0.7433 Freq:60.00Hz Lamp Flux:519.316x1 lm		
NAME: 486765-MR16-6W-2700K-40°	TYPE:	WEIGHT:
SPEC.:	DIM.:	SERIAL No.:
MFR.:	SUR.:35mm	Shielding Angle:

DATA OF LAMP		PHOTOMETRIC DATA				Eff: 86.09 lm/W
MODEL		I _{max} (cd)	765.6	S/MH(C0/180)		0.67
NOMINAL POWER(W)	--	LOR(%)	100.0	S/MH(C90/270)		0.65
RATED VOLTAGE(V)	--	TOTAL FLUX(lm)	519.32	η UP,DN(C0-180)		0.0,49.2
NOMINAL FLUX(lm)	519.316	CIE CLASS	DIRECT	η UP,DN(C180-360)		0.0,50.8
LAMPS INSIDE	1	η up(%)	0.0	CIBSE SHR NOM		0.50
TEST VOLTAGE(V)	--	η down(%)	100.0	CIBSE SHR MAX		0.65



C Range: 0 - 360DEG
 C Interval: 15.0DEG
 Test Speed: HIGH
 Temperature:25.3DEG
 Operators:DAMIN
 Test Date:2022-04-10

γ Range: 0 - 90DEG
 γ Interval: 1.0DEG
 Test System:EVERFINE GO-3000H_V1 SYSTEM V2.00.411
 Humidity:65.0%
 Test Distance:9.000m [K=1.0000]
 Remarks:

ZONAL FLUX DIAGRAM

ZONAL FLUX DIAGRAM:

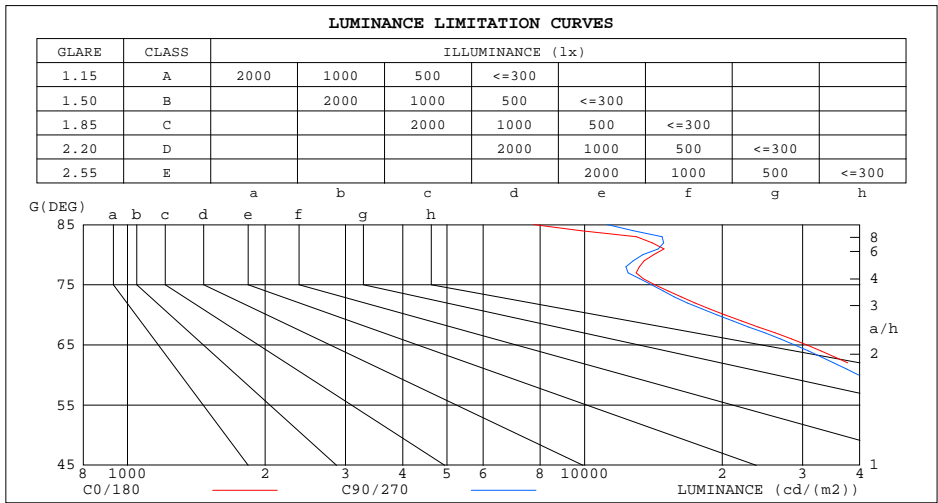
γ	C0	C45	C90	C135	C180	C225	C270	C315	γ	Φ zone	Φ total	\$lum,lamp
10	642.6	653.1	658.1	658.3	690.4	691.2	668.5	683.9	0- 10	69.57	69.57	13.4,13.4
20	357.3	359.8	380.3	365.9	401.7	388.9	390.0	379.5	10- 20	142.5	212.1	40.8,40.8
30	176.8	180.5	186.9	180.7	195.6	184.2	186.0	181.0	20- 30	122.2	334.3	64.4,64.4
40	96.88	97.16	96.25	96.34	104.5	94.85	91.37	94.87	30- 40	83.59	417.9	80.5,80.5
50	47.11	49.61	45.16	49.40	52.12	48.06	40.64	47.44	40- 50	53.32	471.2	90.7,90.7
60	20.70	22.66	20.00	22.82	22.98	22.75	18.11	22.25	50- 60	29.18	500.3	96.3,96.3
70	6.693	7.433	6.698	7.539	8.116	8.105	6.559	7.857	60- 70	13.41	513.8	98.9,98.9
80	2.375	2.262	2.342	2.237	2.452	2.379	2.428	2.461	70- 80	4.388	518.1	99.8,99.8
90	0.0029	0	0	0.0008	0.0208	0.0236	0.0210	0.0235	80- 90	1.168	519.3	100,100
100									90-100			
110									100-110			
120									110-120			
130									120-130			
140									130-140			
150									140-150			
160									150-160			
170									160-170			
180									170-180			
DEG	LUMINOUS INTENSITY:cd									UNIT:lm		

C Range: 0 - 360DEG
C Interval: 15.0DEG
Test Speed: HIGH
Temperature:25.3DEG
Operators:DAMIN
Test Date:2022-04-10

γ Range: 0 - 90DEG
 γ Interval: 1.0DEG
Test System:EVERFINE GO-3000H_V1 SYSTEM V2.00.411
Humidity:65.0%
Test Distance:9.000m [K=1.0000]
Remarks:

LUMINANCE LIMITATION CURVES

Test:U:11.857V I:0.6844A P:6.0319W PF:0.7433 Freq:60.00Hz Lamp Flux:519.316x1 lm		
NAME: 486765-MR16-6W-2700K-40°	TYPE:	WEIGHT:
SPEC.:	DIM.:	SERIAL No.:
MFR.:	SUR.:35mm	Shielding Angle:



LUMINANCE cd/(m2)		
G(DEG)	C0/180	C90/270
85	7744	11209
80	14175	13408
75	14247	14010
70	20279	19471
65	30637	28825
60	42899	39773
55	56904	52253
50	75953	69840
45	101394	94290

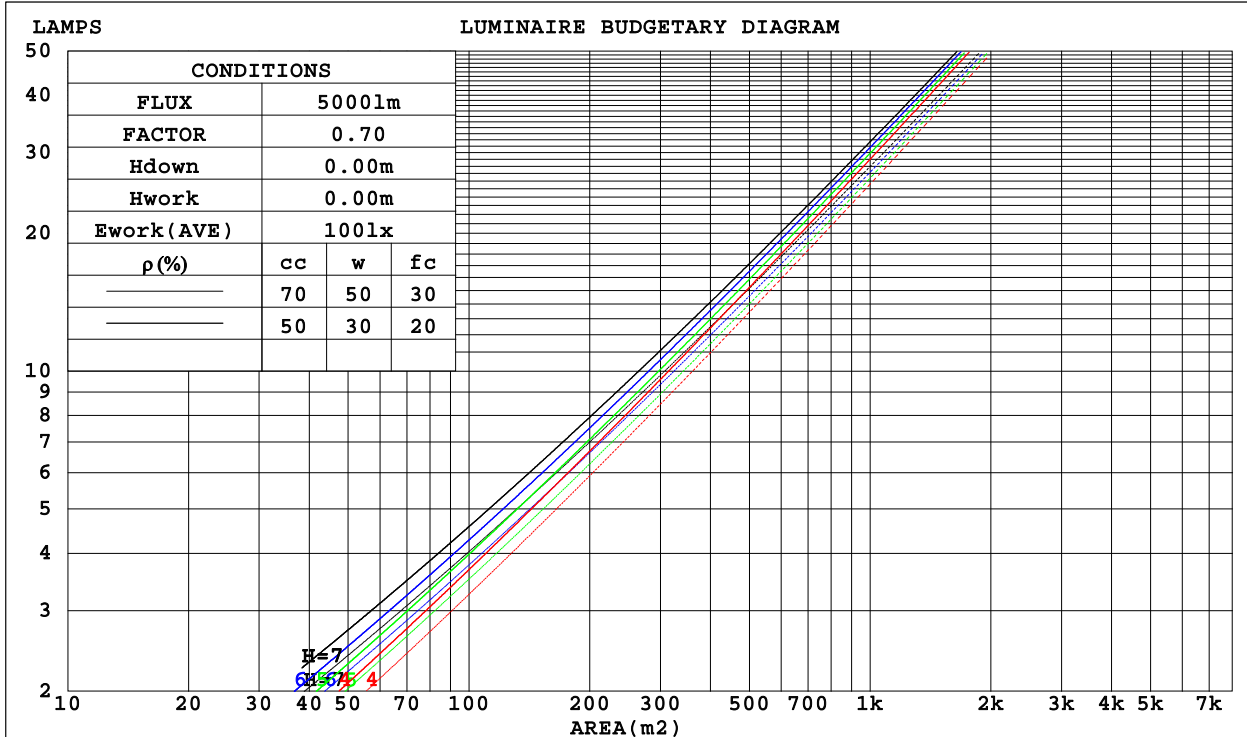
C Range: 0 - 360DEG
 C Interval: 15.0DEG
 Test Speed: HIGH
 Temperature:25.3DEG
 Operators:DAMIN
 Test Date:2022-04-10

γ Range: 0 - 90DEG
 γ Interval: 1.0DEG
 Test System:EVERFINE GO-3000H_V1 SYSTEM V2.00.411
 Humidity:65.0%
 Test Distance:9.000m [K=1.0000]
 Remarks:

CU AND LUMINAIRE BUDGETARY ESTIMATE DIAGRAM

Test:U:11.857V I:0.6844A P:6.0319W PF:0.7433 Freq:60.00Hz Lamp Flux:519.316x1 lm		
NAME: 486765-MR16-6W-2700K-40°	TYPE:	WEIGHT:
SPEC.:	DIM.:	SERIAL No.:
MFR.:	SUR.:35mm	Shielding Angle:

ρ_{cc}	80%			70%			50%			30%			10%			0
ρ_w	50%	30%	10%	50%	30%	10%	50%	30%	10%	50%	30%	10%	50%	30%	10%	0
ρ_{fc}	20%			20%			20%			20%			20%			0
RCR	RCR:Room Cavity Ratio						Coefficients of Utilization(CU)									
0.0	1.19	1.19	1.19	1.16	1.16	1.16	1.11	1.11	1.11	1.06	1.06	1.06	1.02	1.02	1.02	.00
1.0	1.10	1.07	1.05	1.08	1.05	1.03	1.04	1.02	.00	.00	.98	.97	.96	.95	.94	.92
2.0	1.01	.97	.93	.00	.96	.92	.96	.93	.90	.93	.91	.88	.90	.88	.86	.85
3.0	.94	.88	.84	.92	.87	.83	.90	.85	.82	.87	.84	.81	.85	.82	.79	.78
4.0	.87	.81	.77	.86	.80	.76	.84	.79	.75	.82	.78	.74	.80	.76	.73	.72
5.0	.81	.75	.70	.80	.74	.70	.78	.73	.69	.77	.72	.69	.75	.71	.68	.67
6.0	.76	.70	.65	.75	.69	.65	.74	.68	.65	.72	.68	.64	.71	.67	.64	.62
7.0	.71	.65	.61	.71	.65	.61	.69	.64	.60	.68	.63	.60	.67	.63	.60	.58
8.0	.67	.61	.57	.67	.61	.57	.66	.60	.56	.65	.60	.56	.64	.59	.56	.55
9.0	.64	.58	.53	.63	.57	.53	.62	.57	.53	.61	.56	.53	.60	.56	.53	.51
10.0	.60	.54	.50	.60	.54	.50	.59	.54	.50	.58	.54	.50	.58	.53	.50	.49



C Range: 0 - 360DEG
 C Interval: 15.0DEG
 Test Speed: HIGH
 Temperature:25.3DEG
 Operators:DAMIN
 Test Date:2022-04-10

γ Range: 0 - 90DEG
 γ Interval: 1.0DEG
 Test System:EVERFINE GO-3000H_V1 SYSTEM V2.00.411
 Humidity:65.0%
 Test Distance:9.000m [K=1.0000]
 Remarks:

WEC AND CCEC

Test:U:11.857V I:0.6844A P:6.0319W PF:0.7433 Freq:60.00Hz Lamp Flux:519.316x1 lm		
NAME: 486765-MR16-6W-2700K-40°	TYPE:	WEIGHT:
SPEC.:	DIM.:	SERIAL No.:
MFR.:	SUR.:35mm	Shielding Angle:

pcc	80%			70%			50%			30%			10%			0
pw	50%	30%	10%	50%	30%	10%	50%	30%	10%	50%	30%	10%	50%	30%	10%	0
pfc	20%			20%			20%			20%			20%			0
RCR	RCR:Room Cavity Ratio						Wall Exitance Coefficients(WEC)									
0.0																
1.0	.195	.111	.035	.189	.108	.034	.176	.101	.032	.164	.095	.030	.154	.089	.029	
2.0	.187	.103	.032	.182	.100	.031	.171	.095	.030	.161	.090	.028	.152	.086	.027	
3.0	.178	.095	.028	.173	.093	.028	.164	.089	.027	.155	.085	.026	.147	.081	.025	
4.0	.168	.087	.026	.164	.086	.025	.156	.083	.025	.148	.080	.024	.141	.077	.023	
5.0	.159	.081	.023	.155	.080	.023	.148	.077	.023	.142	.075	.022	.136	.072	.022	
6.0	.150	.075	.022	.147	.074	.021	.141	.072	.021	.135	.070	.021	.130	.068	.020	
7.0	.143	.071	.020	.140	.070	.020	.134	.068	.020	.129	.066	.019	.124	.065	.019	
8.0	.136	.066	.019	.133	.065	.019	.128	.064	.018	.124	.063	.018	.119	.061	.018	
9.0	.129	.062	.017	.127	.062	.017	.122	.061	.017	.118	.059	.017	.114	.058	.017	
10.0	.123	.059	.016	.121	.058	.016	.117	.057	.016	.113	.056	.016	.110	.055	.016	

pcc	80%			70%			50%			30%			10%			0
pw	50%	30%	10%	50%	30%	10%	50%	30%	10%	50%	30%	10%	50%	30%	10%	0
pfc	20%			20%			20%			20%			20%			0
RCR	RCR:Room Cavity Ratio						Ceiling Cavity Exitance Coefficients(CCEC)									
0.0	.190	.190	.190	.163	.163	.163	.111	.111	.111	.064	.064	.064	.020	.020	.020	
1.0	.172	.157	.143	.148	.135	.123	.101	.093	.085	.058	.054	.050	.019	.017	.016	
2.0	.158	.132	.111	.136	.114	.096	.093	.079	.067	.054	.046	.039	.017	.015	.013	
3.0	.147	.114	.087	.126	.098	.076	.086	.068	.053	.050	.040	.031	.016	.013	.010	
4.0	.137	.099	.070	.117	.086	.061	.081	.060	.043	.047	.035	.025	.015	.011	.008	
5.0	.128	.088	.058	.110	.076	.050	.076	.053	.036	.044	.031	.021	.014	.010	.007	
6.0	.121	.079	.048	.104	.068	.042	.072	.048	.030	.042	.028	.018	.013	.009	.006	
7.0	.114	.071	.041	.098	.062	.036	.068	.043	.025	.039	.025	.015	.013	.008	.005	
8.0	.108	.065	.035	.093	.056	.031	.064	.040	.022	.038	.023	.013	.012	.008	.004	
9.0	.103	.060	.031	.089	.052	.027	.061	.036	.019	.036	.022	.011	.012	.007	.004	
10.0	.098	.055	.027	.085	.048	.023	.059	.034	.017	.034	.020	.010	.011	.007	.003	

C Range: 0 - 360DEG
C Interval: 15.0DEG
Test Speed: HIGH
Temperature:25.3DEG
Operators:DAMIN
Test Date:2022-04-10

γ Range: 0 - 90DEG
γ Interval: 1.0DEG
Test System:EVERFINE GO-3000H_V1 SYSTEM V2.00.411
Humidity:65.0%
Test Distance:9.000m [K=1.0000]
Remarks:

UGR(Unified Glare Rating) Table

Test:U:11.857V I:0.6844A P:6.0319W PF:0.7433 Freq:60.00Hz Lamp Flux:519.316x1 lm										
NAME: 486765-MR16-6W-2700K-40°					TYPE:			WEIGHT:		
SPEC.:					DIM.:			SERIAL No.:		
MFR.:					SUR.:35mm			Shielding Angle:		
ceiling/cavity	0.7	0.7	0.5	0.5	0.3	0.7	0.7	0.5	0.5	0.3
walls	0.5	0.3	0.5	0.3	0.3	0.5	0.3	0.5	0.3	0.3
working plane	0.2	0.2	0.2	0.2	0.2	0.2	0.2	0.2	0.2	0.2
Room dimensions	Viewed crosswise					Viewed endwise				
x = 2H y = 2H	24.6	25.7	24.9	25.8	26.0	24.5	25.5	24.7	25.6	25.8
3H	24.8	25.7	25.1	25.9	26.1	24.6	25.5	24.9	25.7	26.0
4H	24.8	25.7	25.1	25.9	26.1	24.6	25.5	24.9	25.7	25.9
6H	24.8	25.6	25.1	25.8	26.1	24.6	25.4	24.9	25.7	25.9
8H	24.7	25.6	25.1	25.8	26.1	24.6	25.4	24.9	25.6	25.9
12H	24.7	25.5	25.0	25.8	26.0	24.5	25.3	24.9	25.6	25.9
4H 2H	24.7	25.6	25.0	25.8	26.1	24.6	25.4	24.8	25.7	25.9
3H	24.9	25.7	25.3	26.0	26.3	24.8	25.5	25.1	25.8	26.1
4H	24.9	25.7	25.3	26.0	26.3	24.8	25.5	25.1	25.8	26.1
6H	25.0	25.6	25.3	25.9	26.3	24.8	25.4	25.2	25.8	26.1
8H	25.0	25.5	25.4	25.9	26.3	24.8	25.4	25.2	25.7	26.1
12H	24.9	25.5	25.3	25.8	26.2	24.8	25.3	25.2	25.7	26.1
8H 4H	24.9	25.4	25.3	25.8	26.2	24.7	25.3	25.1	25.6	26.0
6H	24.9	25.4	25.3	25.8	26.2	24.8	25.2	25.2	25.6	26.0
8H	24.9	25.4	25.4	25.8	26.2	24.8	25.2	25.3	25.6	26.1
12H	24.9	25.3	25.4	25.7	26.2	24.8	25.2	25.3	25.6	26.1
12H 4H	24.8	25.4	25.2	25.7	26.1	24.7	25.2	25.1	25.6	26.0
6H	24.9	25.3	25.3	25.7	26.2	24.7	25.2	25.2	25.6	26.0
8H	24.9	25.3	25.4	25.7	26.2	24.8	25.1	25.3	25.6	26.1
Variations with the observer position at spacings:										
S = 1.0H	+ 1.1 / - 1.7					+ 1.2 / - 1.8				
1.5H	+ 1.2 / - 1.0					+ 1.3 / - 1.1				
2.0H	+ 2.3 / - 2.0					+ 2.2 / - 1.9				

CIE Pub.117, 519.3 lm Total Lamp Luminous Flux Corrected (8log(F/F0) = -2.3)
Area: 0.001 m2

C Range: 0 - 360DEG
C Interval: 15.0DEG
Test Speed: HIGH
Temperature:25.3DEG
Operators:DAMIN
Test Date:2022-04-10

γ Range: 0 - 90DEG
γ Interval: 1.0DEG
Test System:EVERFINE GO-3000H_V1 SYSTEM V2.00.411
Humidity:65.0%
Test Distance:9.000m [K=1.0000]
Remarks:

UTILIZATION FACTORS TABLE

Test:U:11.857V I:0.6844A P:6.0319W PF:0.7433 Freq:60.00Hz Lamp Flux:519.316x1 lm		
NAME: 486765-MR16-6W-2700K-40°	TYPE:	WEIGHT:
SPEC.:	DIM.:	SERIAL No.:
MFR.:	SUR.:35mm	Shielding Angle:

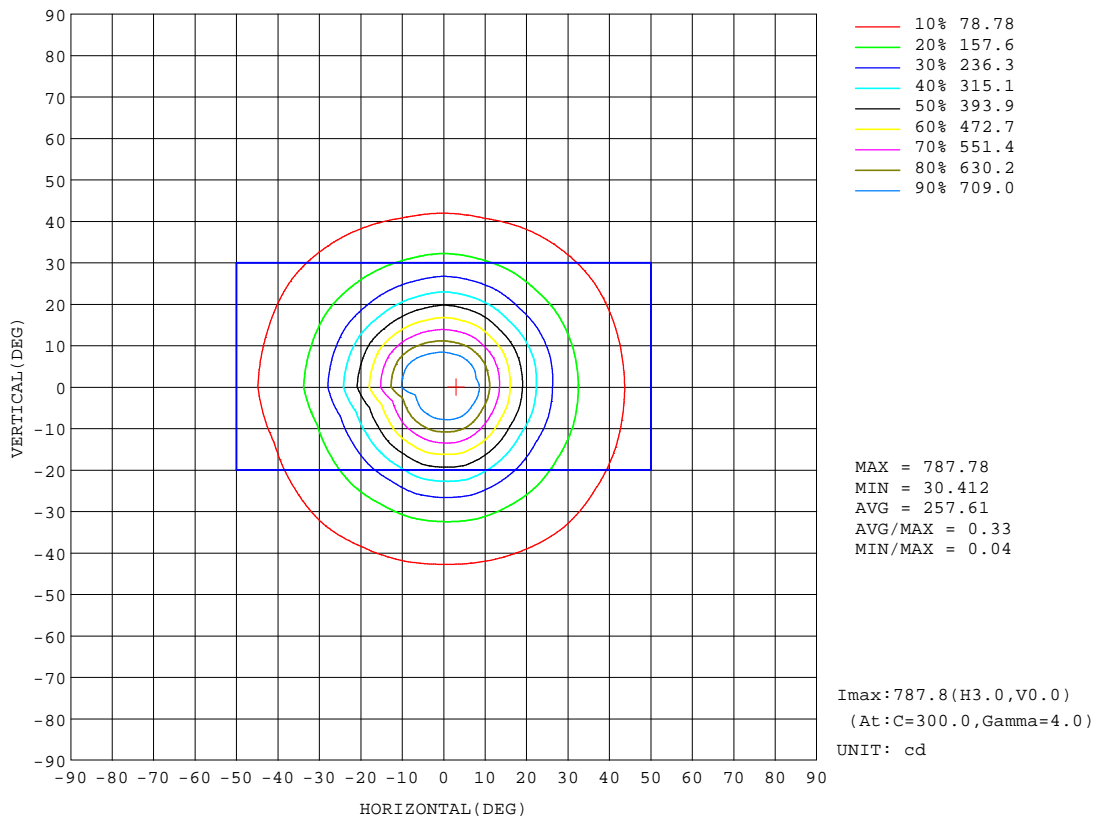
REFLECTANCE										
Ceiling	0.8	0.8	0.8	0.7	0.7	0.7	0.5	0.5	0.5	0
Walls	0.7	0.5	0.3	0.7	0.5	0.3	0.7	0.5	0.3	0
Working plane	0.2	0.2	0.2	0.2	0.2	0.2	0.2	0.2	0.2	0
ROOM INDEX	UTILIZATION FACTORS(PERCENT) k(RI) x RCR = 5									
k = 0.60	79	71	67	79	71	67	78	71	66	62
0.80	88	80	76	87	80	75	86	79	75	71
1.00	94	87	82	93	86	82	91	86	81	77
1.25	99	92	88	97	92	87	95	90	87	82
1.50	102	96	92	101	95	91	98	94	90	85
2.00	106	101	97	104	99	96	101	97	94	89
2.50	108	103	100	106	102	99	103	99	97	90
3.00	110	106	102	108	104	101	104	101	99	92
4.00	112	109	106	110	107	105	106	104	102	94
5.00	114	111	108	111	109	107	107	105	104	96
ROOM INDEX	UF(total)									Direct
According to DIN EN 13032-2 2004			Suspended				SHRNOM = 1.25			

C Range: 0 - 360DEG
 C Interval: 15.0DEG
 Test Speed: HIGH
 Temperature:25.3DEG
 Operators:DAMIN
 Test Date:2022-04-10

γ Range: 0 - 90DEG
 γ Interval: 1.0DEG
 Test System:EVERFINE GO-3000H_V1 SYSTEM V2.00.411
 Humidity:65.0%
 Test Distance:9.000m [K=1.0000]
 Remarks:

ISOCANDELA DIAGRAM

Test:U:11.857V I:0.6844A P:6.0319W PF:0.7433 Freq:60.00Hz Lamp Flux:519.316x1 lm		
NAME: 486765-MR16-6W-2700K-40°	TYPE:	WEIGHT:
SPEC.:	DIM.:	SERIAL No.:
MFR.:	SUR.:35mm	Shielding Angle:



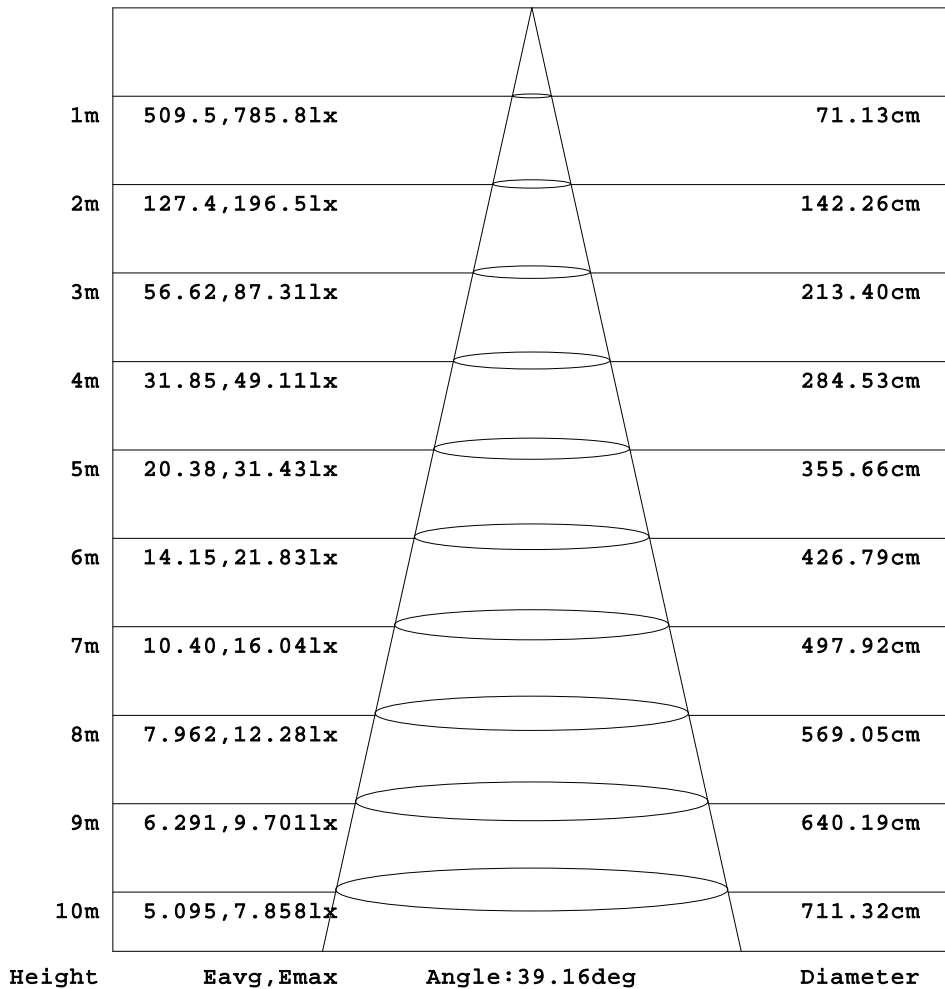
C Range: 0 - 360DEG
 C Interval: 15.0DEG
 Test Speed: HIGH
 Temperature:25.3DEG
 Operators:DAMIN
 Test Date:2022-04-10

γ Range: 0 - 90DEG
 γ Interval: 1.0DEG
 Test System:EVERFINE GO-3000H_V1 SYSTEM V2.00.411
 Humidity:65.0%
 Test Distance:9.000m [K=1.0000]
 Remarks:

AAI Figure

Test:U:11.857V I:0.6844A P:6.0319W PF:0.7433 Freq:60.00Hz Lamp Flux:519.316x1 lm		
NAME: 486765-MR16-6W-2700K-40°	TYPE:	WEIGHT:
SPEC.:	DIM.:	SERIAL No.:
MFR.:	SUR.:35mm	Shielding Angle:

Flux out:212.1 lm



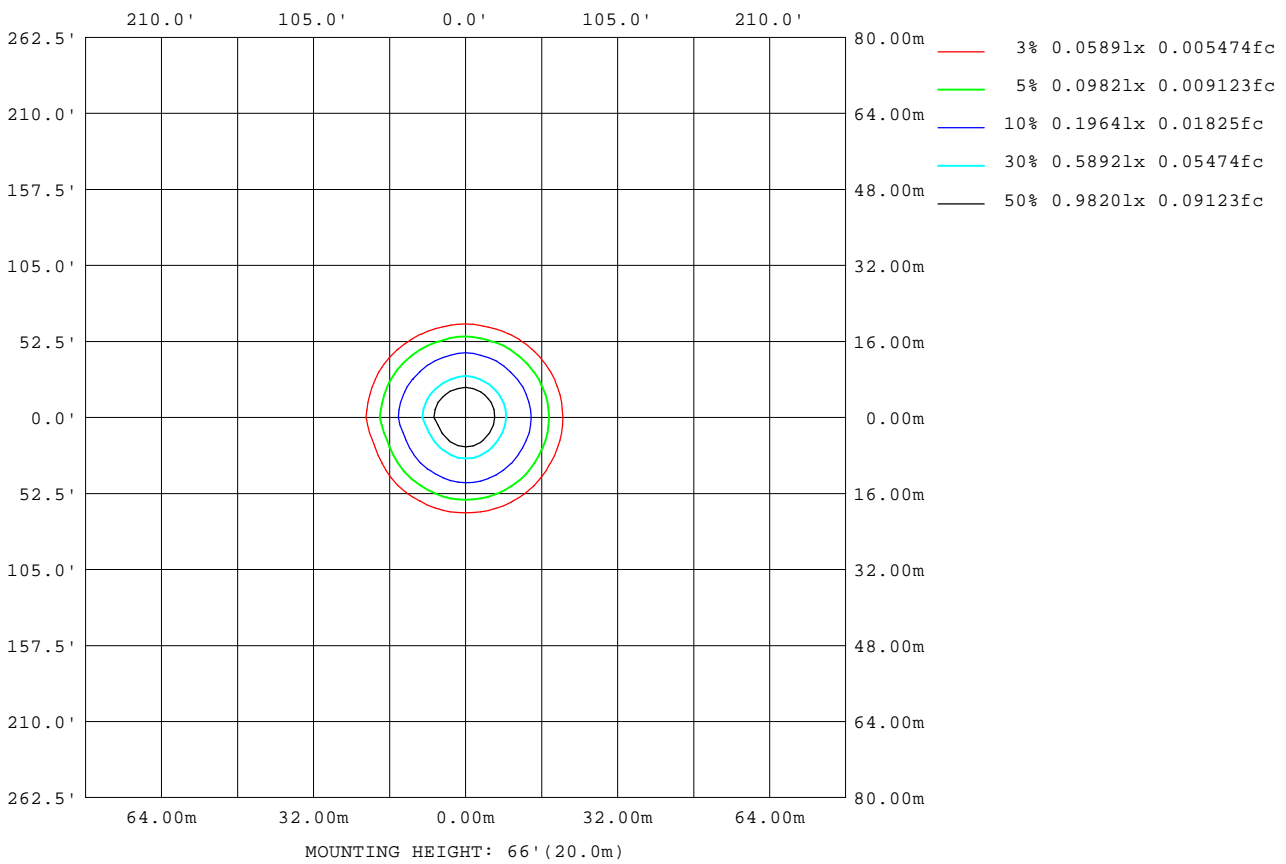
Note:The Curves indicate the illuminated area and the average illumination when the luminaire is at different distance.

C Range: 0 - 360DEG
C Interval: 15.0DEG
Test Speed: HIGH
Temperature:25.3DEG
Operators:DAMIN
Test Date:2022-04-10

γ Range: 0 - 90DEG
γ Interval: 1.0DEG
Test System:EVERFINE GO-3000H_V1 SYSTEM V2.00.411
Humidity:65.0%
Test Distance:9.000m [K=1.0000]
Remarks:

ISOLUX DIAGRAM

Test:U:11.857V I:0.6844A P:6.0319W PF:0.7433 Freq:60.00Hz Lamp Flux:519.316x1 lm		
NAME: 486765-MR16-6W-2700K-40°	TYPE:	WEIGHT:
SPEC.:	DIM.:	SERIAL No.:
MFR.:	SUR.:35mm	Shielding Angle:



C Range: 0 - 360DEG
C Interval: 15.0DEG
Test Speed: HIGH
Temperature:25.3DEG
Operators:DAMIN
Test Date:2022-04-10

γ Range: 0 - 90DEG
γ Interval: 1.0DEG
Test System:EVERFINE GO-3000H_V1 SYSTEM V2.00.411
Humidity:65.0%
Test Distance:9.000m [K=1.0000]
Remarks:

LED Avg.L Report

Test:U:11.857V I:0.6844A P:6.0319W PF:0.7433 Freq:60.00Hz Lamp Flux:519.316x1 lm		
NAME: 486765-MR16-6W-2700K-40°	TYPE:	WEIGHT:
SPEC.:	DIM.:	SERIAL No.:
MFR.:	SUR.:35mm	Shielding Angle:

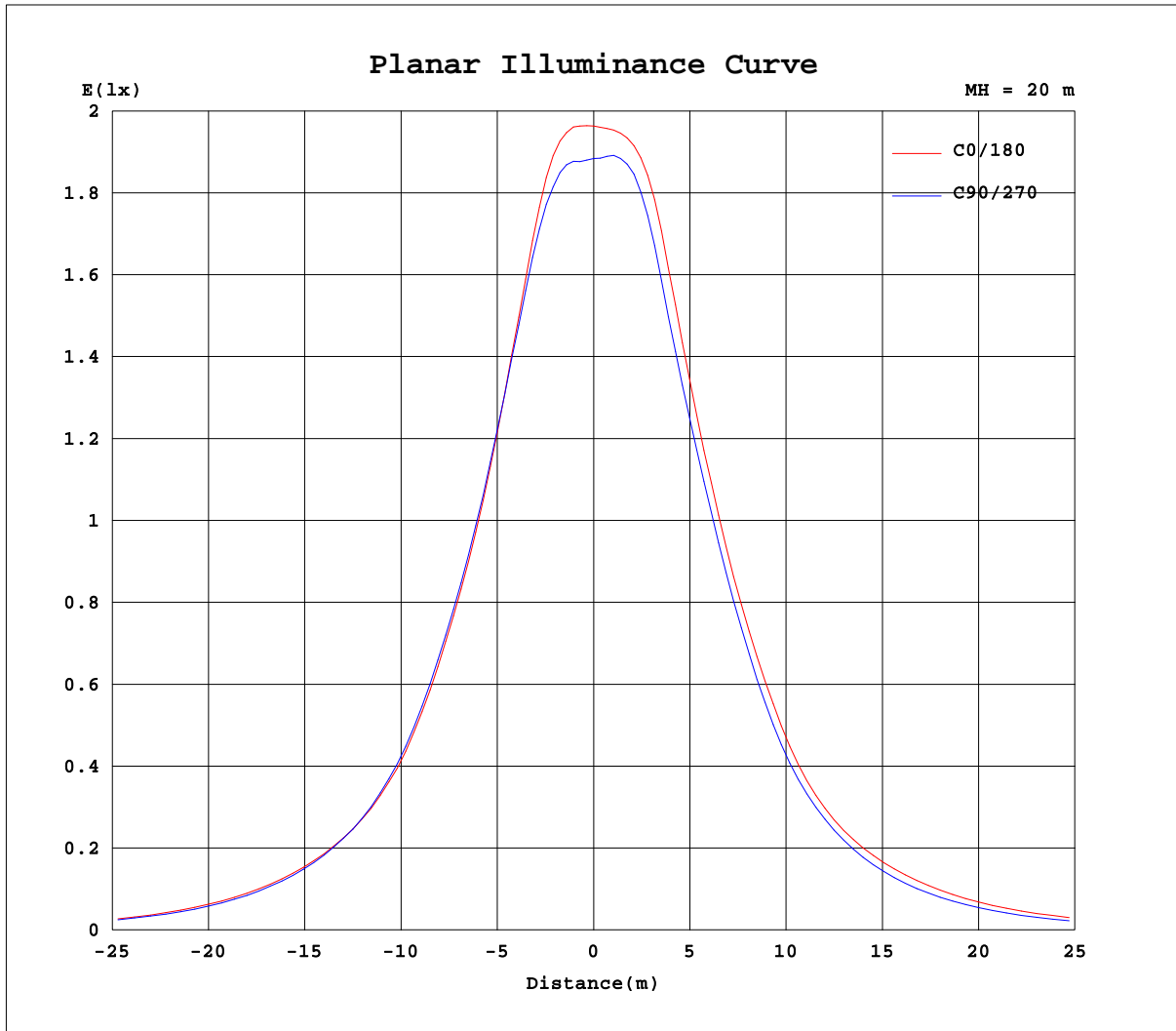
AvgL	cd/m2
L_0~180(65)av	31963
L_0~180(75)av	15039
L_0~180(85)av	11698
L_90~270(65)av	27968
L_90~270(75)av	14441
L_90~270(85)av	12214
L_45(65)av	33060
L_45(75)av	15021
L_45(85)av	11598

Standard: GB/T 29293-2012

C Range: 0 - 360DEG
C Interval: 15.0DEG
Test Speed: HIGH
Temperature:25.3DEG
Operators:DAMIN
Test Date:2022-04-10

γ Range: 0 - 90DEG
γ Interval: 1.0DEG
Test System:EVERFINE GO-3000H_V1 SYSTEM V2.00.411
Humidity:65.0%
Test Distance:9.000m [K=1.0000]
Remarks:

Planar Illuminance Curve



C Range: 0 - 360DEG
C Interval: 15.0DEG
Test Speed: HIGH
Temperature: 25.3DEG
Operators: DAMIN
Test Date: 2022-04-10

γ Range: 0 - 90DEG
 γ Interval: 1.0DEG
Test System: EVERFINE GO-3000H_V1 SYSTEM V2.00.411
Humidity: 65.0%
Test Distance: 9.000m [K=1.0000]
Remarks:

LUMINOUS DISTRIBUTION INTENSITY DATA

Test:U:11.857V I:0.6844A P:6.0319W PF:0.7433 Freq:60.00Hz Lamp Flux:519.316x1 lm		
NAME: 486765-MR16-6W-2700K-40°	TYPE:	WEIGHT:
SPEC.:	DIM.:	SERIAL No.:
MFR.:	SUR.:35mm	Shielding Angle:

Table--1

UNIT: cd

C(DEG) γ (DEG)	0	15	30	45	60	75	90	105	120	135	150	165	180	195	210	225	240	255	270
0	758	758	758	758	758	758	758	758	758	758	758	758	758	758	758	758	758	758	758
5	752	752	751	753	753	752	753	754	754	754	751	750	756	758	761	762	761	762	761
10	643	644	643	653	662	662	658	661	659	658	654	651	690	696	702	691	677	669	669
15	485	487	484	498	506	515	511	512	504	505	497	500	539	544	548	539	526	521	524
20	357	356	348	360	371	383	380	380	366	366	361	367	402	400	404	389	383	382	390
25	251	250	245	253	261	271	268	268	254	254	252	258	287	283	280	268	265	264	271
30	177	179	176	180	183	189	187	186	179	181	179	179	196	195	191	184	182	181	186
35	131	131	129	132	133	136	134	134	130	131	129	131	141	138	137	131	128	128	130
40	96.9	96.5	94.7	97.2	96.3	97.1	96.2	96.6	94.4	96.3	94.8	96.1	104	100	99.3	94.8	92.0	89.5	91.4
45	69.2	69.5	68.4	70.0	69.1	68.3	67.1	68.4	67.9	69.9	68.3	68.8	75.2	72.7	71.9	68.2	65.2	62.3	62.7
50	47.1	48.5	48.3	49.6	48.0	46.7	45.2	46.4	47.5	49.4	48.2	47.6	52.1	50.9	51.0	48.1	44.6	42.1	40.6
55	31.5	32.0	33.3	33.6	32.9	30.8	30.1	30.8	32.6	33.7	33.3	31.6	34.4	34.8	34.6	33.3	29.9	28.2	27.0
60	20.7	21.1	22.3	22.7	22.0	20.6	20.0	20.5	21.8	22.8	22.2	21.0	23.0	23.3	23.6	22.7	20.1	18.7	18.1
65	12.5	12.7	13.4	13.8	13.5	12.7	12.3	12.5	13.2	14.0	13.5	12.8	14.5	14.7	15.0	14.3	12.6	11.7	11.4
70	6.69	6.75	7.15	7.43	7.35	6.90	6.70	6.76	7.12	7.54	7.28	6.85	8.12	8.32	8.58	8.10	7.09	6.62	6.56
75	3.56	3.42	3.46	3.55	3.69	3.65	3.65	3.66	3.62	3.66	3.65	3.52	4.23	4.31	4.45	4.20	3.76	3.68	3.83
80	2.38	2.26	2.27	2.26	2.27	2.28	2.34	2.38	2.30	2.24	2.29	2.25	2.45	2.44	2.48	2.38	2.29	2.31	2.43
85	0.65	0.58	0.57	0.65	0.79	0.84	0.98	0.93	0.81	0.76	0.76	0.75	1.39	1.49	1.52	1.39	1.11	1.10	1.15
90	0.00	0.00	0.00	0.00	0.00	0.00	0.00	0.00	0.00	0.00	0.00	0.00	0.02	0.02	0.03	0.02	0.02	0.02	0.02

C Range: 0 - 360DEG
C Interval: 15.0DEG
Test Speed: HIGH
Temperature:25.3DEG
Operators:DAMIN
Test Date:2022-04-10

γ Range: 0 - 90DEG
γ Interval: 1.0DEG
Test System:EVERFINE GO-3000H_V1 SYSTEM V2.00.411
Humidity:65.0%
Test Distance:9.000m [K=1.0000]
Remarks:

