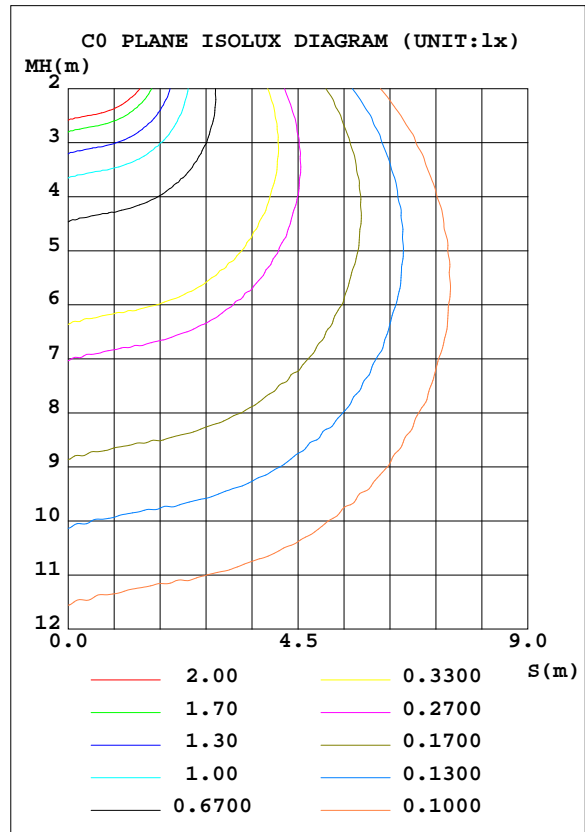
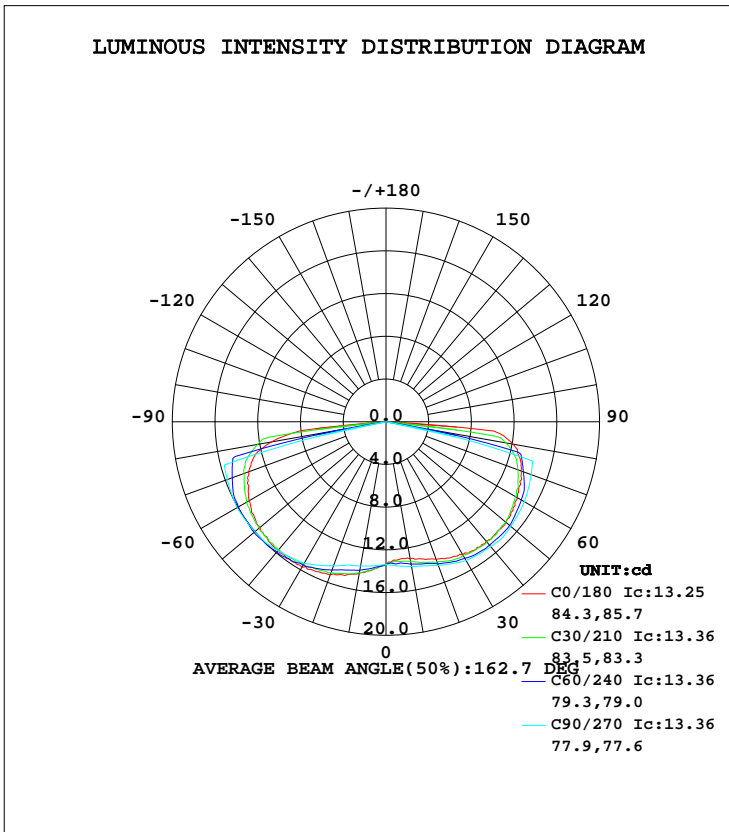


## LUMINAIRE PHOTOMETRIC TEST REPORT

Test:U:12.03V I:0.2445A P:1.869W PF:0.6352 Lamp Flux:235x1 lm		
NAME: 487123-Amber	TYPE:487123-Amber	WEIGHT:
SPEC.:	DIM.:	SERIAL No.:
MFR.:	SUR.:	PROTECTION ANGLE:

DATA OF LAMP		PHOTOMETRIC DATA Eff: 82.57 lm/W			
MODEL	487123-Amber	I <sub>max</sub> (cd)	16.37	S/MH(C0/180)	1.76
NOMINAL POWER(W)	3	LOR(%)	65.7	S/MH(C90/270)	1.76
RATED VOLTAGE(V)	12	TOTAL FLUX(lm)	78.807	η UP, DN(C0-180)	0.0,32.2
NOMINAL FLUX(lm)	120	CIE CLASS	DIRECT	η UP, DN(C180-360)	0.0,33.5
LAMPS INSIDE	1	η up(%)	0.0	CIBSE SHR NOM	2.00
TEST VOLTAGE(V)	12	η down(%)	65.7	CIBSE SHR MAX	0.00



C Range: 0 - 360DEG  
 C Interval: 5.0DEG  
 Test Speed: HIGH  
 Temperature:20DEG  
 Operators:Y  
 Test Date:2023-07-13

γ Range: 0 - 90DEG  
 γ Interval: 0.5DEG  
 Test System:EVERFINE GO-2000B\_V1 SYSTEM V2.0.291  
 Humidity:65.0%  
 Test Distance:8.750m [K=1.0000]  
 Remarks:

## ZONAL FLUX DIAGRAM

ZONAL FLUX DIAGRAM:

γ	C0	C45	C90	C135	C180	C225	C270	C315	γ	Φ zone	Φ total	lum, lamp
5	12.99	13.20	13.56	13.84	13.88	13.82	13.54	13.22	0- 5	0.3213	0.3213	0.41,0.27
10	13.04	13.39	13.76	14.36	14.39	14.23	13.71	13.42	5- 10	0.9782	1.299	1.65,1.08
15	13.30	13.74	13.96	14.77	14.91	14.61	13.89	13.69	10- 15	1.659	2.959	3.75,2.47
20	13.70	14.07	14.31	15.19	15.24	14.86	14.36	14.04	15- 20	2.362	5.321	6.75,4.43
25	14.08	14.39	14.66	15.55	15.48	15.22	14.83	14.54	20- 25	3.083	8.405	10.7,7
30	14.40	14.68	15.01	15.84	15.73	15.48	15.29	15.00	25- 30	3.803	12.21	15.5,10.2
35	14.62	14.86	15.13	15.98	15.70	15.65	15.52	15.34	30- 35	4.504	16.71	21.2,13.9
40	14.61	15.02	15.26	16.09	15.73	15.75	15.75	15.60	35- 40	5.157	21.87	27.7,18.2
45	14.65	14.87	15.39	16.09	15.65	15.84	15.98	15.82	40- 45	5.754	27.62	35.1,23
50	14.65	14.81	15.25	15.99	15.41	15.82	16.02	15.88	45- 50	6.284	33.91	43,28.3
55	14.51	14.64	15.11	15.83	15.15	15.84	16.06	15.81	50- 55	6.722	40.63	51.6,33.9
60	14.24	14.27	14.97	15.40	14.76	15.51	16.10	15.70	55- 60	7.063	47.69	60.5,39.7
65	13.91	13.91	14.71	14.95	14.18	15.29	15.96	15.52	60- 65	7.300	54.99	69.8,45.8
70	13.45	13.45	14.46	14.38	13.68	14.73	15.82	15.22	65- 70	7.416	62.41	79.2,52
75	12.98	12.74	14.20	13.50	12.80	14.23	15.68	14.84	70- 75	7.407	69.81	88.6,58.2
80	12.10	9.798	0	10.11	10.87	10.95	0	11.60	75- 80	6.064	75.88	96.3,63.2
85	10.13	0	0	0	3.814	0	0	0	80- 85	2.516	78.39	99.5,65.3
90	0.0173	0	0	0	0.0000	0	0	0	85- 90	0.4130	78.81	100,65.7
95									90- 95			
100									95-100			
105									100-105			
110									105-110			
115									110-115			
120									115-120			
125									120-125			
130									125-130			
135									130-135			
140									135-140			
145									140-145			
150									145-150			
155									150-155			
160									155-160			
165									160-165			
170									165-170			
175									170-175			
180									175-180			
DEG	LUMINOUS INTENSITY:cd								UNIT:lm			

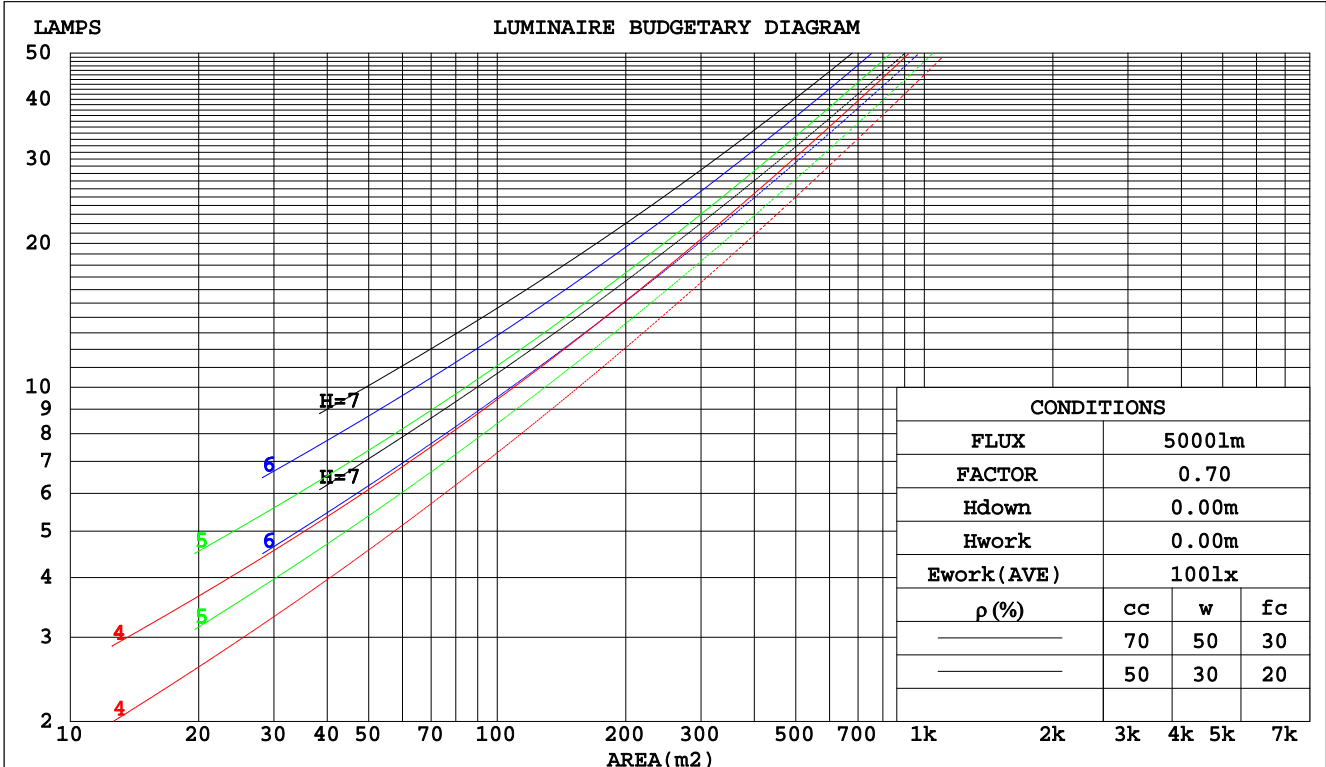
C Range: 0 - 360DEG  
 C Interval: 5.0DEG  
 Test Speed: HIGH  
 Temperature:20DEG  
 Operators:Y  
 Test Date:2023-07-13

γ Range: 0 - 90DEG  
 γ Interval: 0.5DEG  
 Test System:EVERFINE GO-2000B\_V1 SYSTEM V2.0.291  
 Humidity:65.0%  
 Test Distance:8.750m [K=1.0000]  
 Remarks:

## CU AND LUMINAIRE BUDGETARY ESTIMATE DIAGRAM

Test:U:12.03V I:0.2445A P:1.869W PF:0.6352 Lamp Flux:235x1 lm		
NAME: 487123-Amber	TYPE:487123-Amber	WEIGHT:
SPEC.:	DIM.:	SERIAL No.:
MFR.:	SUR.:	PROTECTION ANGLE:

pcc	80%			70%			50%			30%			10%			0
pw	50%	30%	10%	50%	30%	10%	50%	30%	10%	50%	30%	10%	50%	30%	10%	0
pfc	20%			20%			20%			20%			20%			0
RCR	RCR:Room Cavity Ratio															
	Coefficients of Utilization(CU)															
0.0	.78	.78	.78	.76	.76	.76	.73	.73	.73	.70	.70	.70	.67	.67	.67	.66
1.0	.65	.61	.58	.64	.60	.57	.61	.58	.55	.58	.56	.54	.55	.54	.52	.50
2.0	.54	.49	.44	.53	.48	.43	.51	.46	.42	.48	.45	.41	.46	.43	.40	.39
3.0	.46	.40	.34	.45	.39	.34	.43	.38	.33	.41	.36	.33	.39	.35	.32	.30
4.0	.40	.33	.28	.39	.33	.28	.37	.32	.27	.36	.31	.27	.34	.30	.26	.25
5.0	.35	.28	.23	.34	.28	.23	.33	.27	.23	.31	.26	.22	.30	.26	.22	.20
6.0	.31	.24	.19	.30	.24	.19	.29	.23	.19	.28	.23	.19	.27	.22	.19	.17
7.0	.28	.21	.17	.27	.21	.17	.26	.21	.16	.25	.20	.16	.24	.20	.16	.15
8.0	.25	.19	.15	.25	.19	.15	.24	.18	.14	.23	.18	.14	.22	.18	.14	.13
9.0	.23	.17	.13	.22	.17	.13	.22	.16	.13	.21	.16	.13	.20	.16	.13	.11
10.0	.21	.15	.11	.21	.15	.11	.20	.15	.11	.19	.15	.11	.19	.14	.11	.10



C Range: 0 - 360DEG  
 C Interval: 5.0DEG  
 Test Speed: HIGH  
 Temperature:20DEG  
 Operators:Y  
 Test Date:2023-07-13

γ Range: 0 - 90DEG  
 γ Interval: 0.5DEG  
 Test System:EVERFINE GO-2000B\_V1 SYSTEM V2.0.291  
 Humidity:65.0%  
 Test Distance:8.750m [K=1.0000]  
 Remarks:

### WEC AND CCEC

Test:U:12.03V I:0.2445A P:1.869W PF:0.6352 Lamp Flux:235x1 lm		
NAME: 487123-Amber	TYPE:487123-Amber	WEIGHT:
SPEC.:	DIM.:	SERIAL No.:
MFR.:	SUR.:	PROTECTION ANGLE:

ρcc	80%			70%			50%			30%			10%			0
ρw	50%	30%	10%	50%	30%	10%	50%	30%	10%	50%	30%	10%	50%	30%	10%	0
ρfc	20%			20%			20%			20%			20%			0
RCR	RCR:Room Cavity Ratio						Wall Exitance Coefficients(WEC)									
0.0																
1.0	.264	.150	.048	.259	.148	.047	.250	.144	.046	.242	.139	.045	.234	.136	.044	
2.0	.240	.132	.040	.236	.130	.040	.228	.127	.039	.220	.124	.039	.213	.121	.038	
3.0	.215	.115	.034	.212	.113	.034	.204	.111	.034	.198	.108	.033	.191	.106	.033	
4.0	.194	.101	.030	.190	.100	.029	.184	.098	.029	.178	.096	.029	.172	.094	.029	
5.0	.175	.089	.026	.172	.088	.026	.167	.087	.026	.161	.085	.025	.156	.083	.025	
6.0	.160	.080	.023	.157	.079	.023	.152	.078	.023	.147	.077	.022	.143	.075	.022	
7.0	.147	.073	.021	.144	.072	.020	.140	.071	.020	.135	.069	.020	.131	.068	.020	
8.0	.135	.066	.019	.133	.066	.019	.129	.065	.018	.125	.064	.018	.122	.063	.018	
9.0	.126	.061	.017	.124	.060	.017	.120	.059	.017	.117	.059	.017	.113	.058	.017	
10.0	.117	.056	.016	.115	.056	.016	.112	.055	.015	.109	.054	.015	.106	.053	.015	

ρcc	80%			70%			50%			30%			10%			0
ρw	50%	30%	10%	50%	30%	10%	50%	30%	10%	50%	30%	10%	50%	30%	10%	0
ρfc	20%			20%			20%			20%			20%			0
RCR	RCR:Room Cavity Ratio						Ceiling Cavity Exitance Coefficients(CCEC)									
0.0	.125	.125	.125	.107	.107	.107	.073	.073	.073	.042	.042	.042	.013	.013	.013	
1.0	.123	.102	.083	.105	.088	.072	.072	.060	.050	.041	.035	.029	.013	.011	.009	
2.0	.120	.086	.058	.102	.074	.051	.070	.051	.035	.040	.030	.021	.013	.010	.007	
3.0	.115	.075	.043	.099	.065	.038	.068	.045	.026	.039	.026	.016	.013	.009	.005	
4.0	.110	.067	.034	.095	.058	.029	.065	.040	.021	.038	.024	.012	.012	.008	.004	
5.0	.105	.060	.027	.090	.052	.024	.062	.037	.017	.036	.021	.010	.012	.007	.003	
6.0	.100	.055	.023	.086	.048	.020	.059	.033	.014	.034	.020	.008	.011	.006	.003	
7.0	.095	.051	.020	.082	.044	.017	.056	.031	.012	.033	.018	.007	.011	.006	.002	
8.0	.090	.047	.017	.078	.041	.015	.054	.029	.011	.031	.017	.006	.010	.006	.002	
9.0	.086	.044	.015	.074	.038	.013	.051	.027	.009	.030	.016	.006	.010	.005	.002	
10.0	.082	.041	.014	.070	.035	.012	.049	.025	.008	.028	.015	.005	.009	.005	.002	

C Range: 0 - 360DEG  
 C Interval: 5.0DEG  
 Test Speed: HIGH  
 Temperature:20DEG  
 Operators:Y  
 Test Date:2023-07-13

γ Range: 0 - 90DEG  
 γ Interval: 0.5DEG  
 Test System:EVERFINE GO-2000B\_V1 SYSTEM V2.0.291  
 Humidity:65.0%  
 Test Distance:8.750m [K=1.0000]  
 Remarks:

## UGR(Unified Glare Rating) Table

Test:U:12.03V I:0.2445A P:1.869W PF:0.6352 Lamp Flux:235x1 lm										
NAME: 487123-Amber					TYPE:487123-Amber			WEIGHT:		
SPEC.:					DIM.:			SERIAL No.:		
MFR.:					SUR.:			PROTECTION ANGLE:		
ceiling/cavity	0.7	0.7	0.5	0.5	0.3	0.7	0.7	0.5	0.5	0.3
walls	0.5	0.3	0.5	0.3	0.3	0.5	0.3	0.5	0.3	0.3
working plane	0.2	0.2	0.2	0.2	0.2	0.2	0.2	0.2	0.2	0.2
Room dimensions	Viewed crosswise					Viewed endwise				
x = 2H y = 2H	5.9	7.7	6.2	7.9	8.2	6.3	8.1	6.6	8.3	8.5
3H	9.0	10.6	9.3	10.9	11.1	9.4	11.1	9.7	11.3	11.6
4H	10.6	12.2	11.0	12.5	12.8	11.1	12.7	11.5	13.0	13.3
6H	12.4	13.9	12.8	14.2	14.5	11.4	12.9	11.8	13.2	13.5
8H	13.4	14.8	13.7	15.1	15.4	11.4	12.8	11.7	13.1	13.4
12H	14.4	15.8	14.7	16.1	16.4	11.3	12.7	11.7	13.0	13.4
4H 2H	7.0	8.6	7.4	8.9	9.2	7.3	8.9	7.6	9.1	9.4
3H	10.2	11.6	10.6	11.9	12.2	10.6	12.0	10.9	12.3	12.6
4H	12.0	13.3	12.4	13.6	14.0	12.4	13.7	12.8	14.0	14.4
6H	13.9	15.1	14.4	15.5	15.9	12.8	13.9	13.2	14.3	14.7
8H	15.0	16.1	15.4	16.4	16.8	12.7	13.8	13.1	14.2	14.6
12H	16.0	17.0	16.5	17.4	17.9	12.7	13.7	13.1	14.1	14.5
8H 4H	12.8	13.9	13.2	14.2	14.6	13.1	14.2	13.5	14.6	14.9
6H	14.9	15.9	15.4	16.3	16.7	13.5	14.4	14.0	14.9	15.3
8H	16.1	16.9	16.6	17.4	17.8	13.5	14.3	13.9	14.7	15.2
12H	17.3	18.1	17.8	18.5	19.0	13.4	14.2	13.9	14.6	15.1
12H 4H	12.8	13.8	13.2	14.2	14.6	13.2	14.3	13.7	14.6	15.1
6H	15.0	15.8	15.5	16.2	16.7	13.7	14.5	14.2	15.0	15.4
8H	16.2	16.9	16.7	17.4	17.8	13.7	14.4	14.2	14.8	15.3
Variations with the observer position at spacings:										
S = 1.0H	+ 0.1 / - 0.1					+ 0.1 / - 0.2				
1.5H	+ 0.2 / - 0.3					+ 0.4 / - 0.4				
2.0H	+ 0.2 / - 0.3					+ 0.5 / - 0.7				

CIE Pub.117 Corrected 120.0 lm Total Lamp Luminous Flux. (8log(F/F0) = -7.4)

C Range: 0 - 360DEG  
 C Interval: 5.0DEG  
 Test Speed: HIGH  
 Temperature:20DEG  
 Operators:Y  
 Test Date:2023-07-13

γ Range: 0 - 90DEG  
 γ Interval: 0.5DEG  
 Test System:EVERFINE GO-2000B\_V1 SYSTEM V2.0.291  
 Humidity:65.0%  
 Test Distance:8.750m [K=1.0000]  
 Remarks:

## UTILIZATION FACTORS TABLE

Test:U:12.03V I:0.2445A P:1.869W PF:0.6352 Lamp Flux:235x1 lm		
NAME: 487123-Amber	TYPE:487123-Amber	WEIGHT:
SPEC.:	DIM.:	SERIAL No.:
MFR.:	SUR.:	PROTECTION ANGLE:

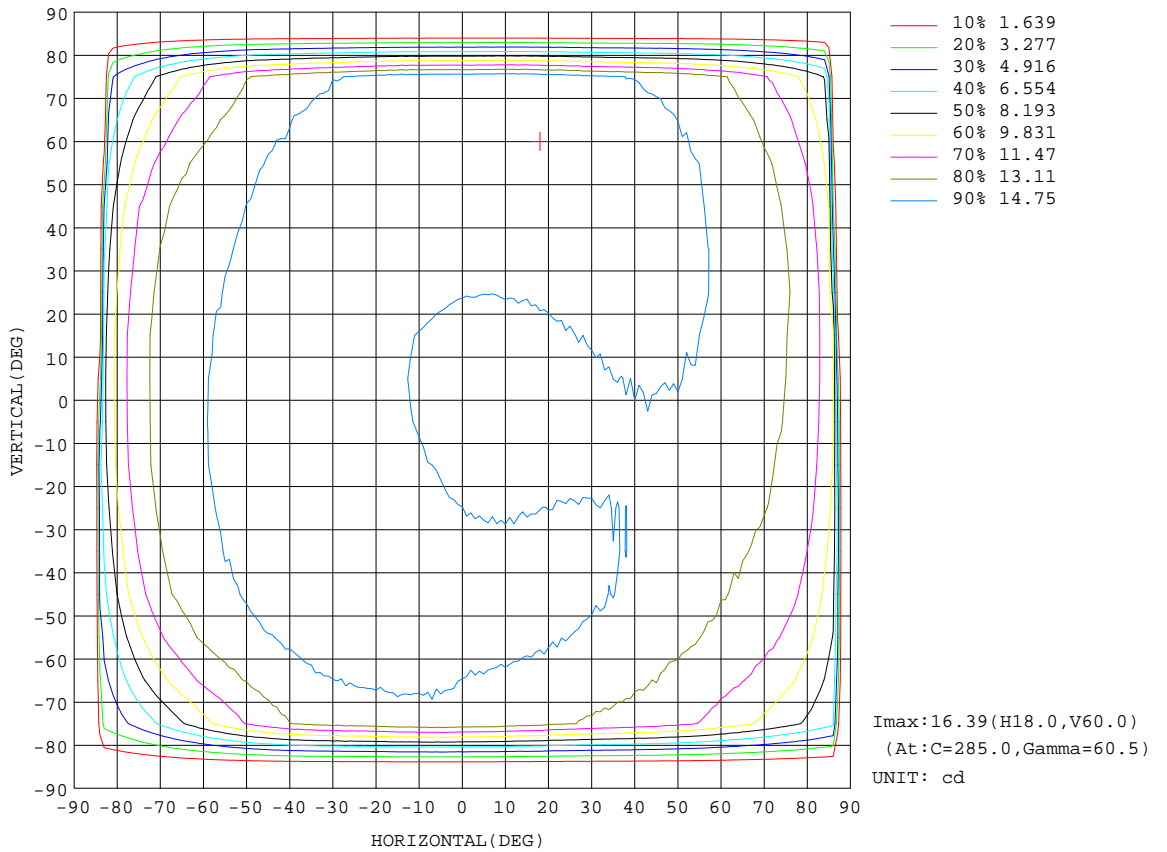
REFLECTANCE										
Ceiling	0.8	0.8	0.8	0.7	0.7	0.7	0.5	0.5	0.5	0
Walls	0.7	0.5	0.3	0.7	0.5	0.3	0.7	0.5	0.3	0
Working plane	0.2	0.2	0.2	0.2	0.2	0.2	0.2	0.2	0.2	0
ROOM INDEX	UTILIZATION FACTORS(PERCENT) $k(RI) \times RCR = 5$									
k = 0.60	32	23	18	31	23	18	31	23	18	13
0.80	38	29	23	37	29	23	36	28	23	18
1.00	43	35	29	43	34	29	41	36	28	23
1.25	48	40	34	47	39	34	45	38	33	27
1.50	52	44	38	51	43	38	49	42	37	31
2.00	57	50	45	56	49	44	53	48	43	37
2.50	61	54	49	59	53	48	56	51	47	41
3.00	63	58	53	62	56	52	59	54	51	44
4.00	67	62	58	65	61	57	62	58	55	49
5.00	69	65	61	67	64	60	64	61	58	52
ROOM INDEX	UF(total)									Direct
According to DIN EN 13032-2 2004			Suspended				SHRNOM = 1.25			

C Range: 0 - 360DEG  
 C Interval: 5.0DEG  
 Test Speed: HIGH  
 Temperature:20DEG  
 Operators:Y  
 Test Date:2023-07-13

$\gamma$  Range: 0 - 90DEG  
 $\gamma$  Interval: 0.5DEG  
 Test System:EVERFINE GO-2000B\_V1 SYSTEM V2.0.291  
 Humidity:65.0%  
 Test Distance:8.750m [K=1.0000]  
 Remarks:

## ISOCANDELA DIAGRAM

Test:U:12.03V I:0.2445A P:1.869W PF:0.6352 Lamp Flux:235x1 lm		
NAME: 487123-Amber	TYPE:487123-Amber	WEIGHT:
SPEC.:	DIM.:	SERIAL No.:
MFR.:	SUR.:	PROTECTION ANGLE:

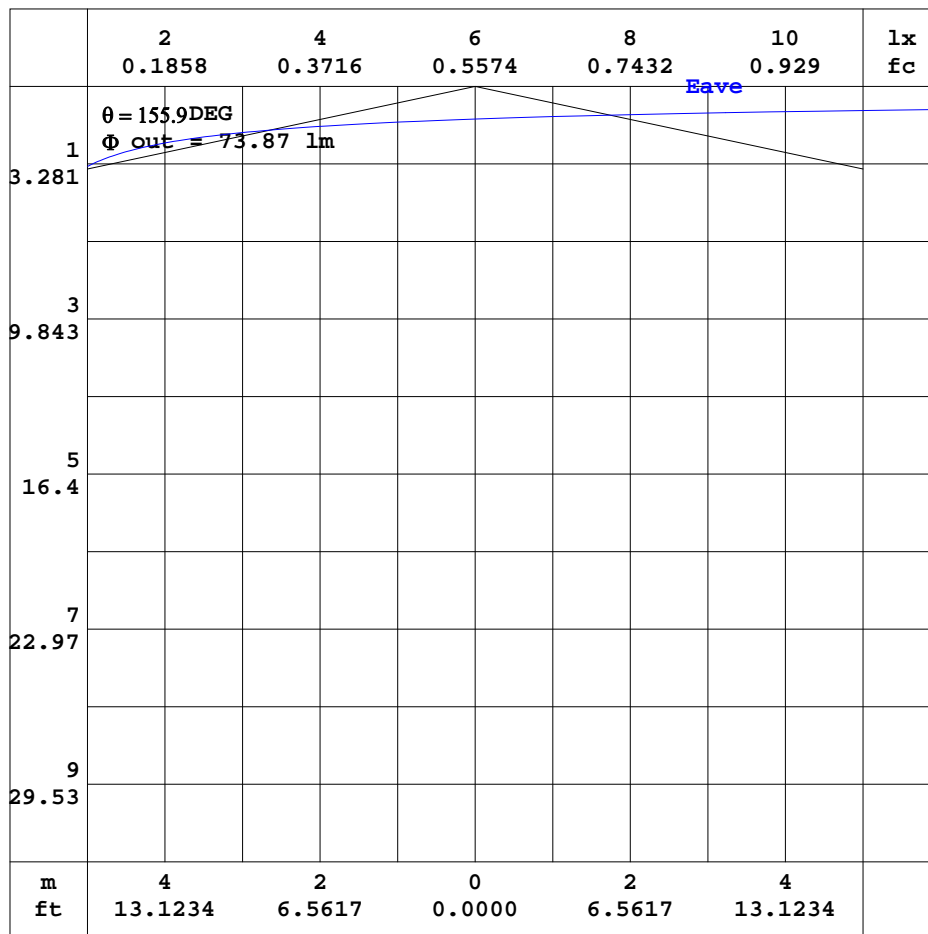


C Range: 0 - 360DEG  
 C Interval: 5.0DEG  
 Test Speed: HIGH  
 Temperature: 20DEG  
 Operators: Y  
 Test Date: 2023-07-13

γ Range: 0 - 90DEG  
 γ Interval: 0.5DEG  
 Test System: EVERFINE GO-2000B\_V1 SYSTEM V2.0.291  
 Humidity: 65.0%  
 Test Distance: 8.750m [K=1.0000]  
 Remarks:

## AAI CURVES

Test:U:12.03V I:0.2445A P:1.869W PF:0.6352 Lamp Flux:235x1 lm		
NAME: 487123-Amber	TYPE:487123-Amber	WEIGHT:
SPEC.:	DIM.:	SERIAL No.:
MFR.:	SUR.:	PROTECTION ANGLE:



Note: The Curves indicate the illuminated area and the average illumination when the luminaire is at different distance.

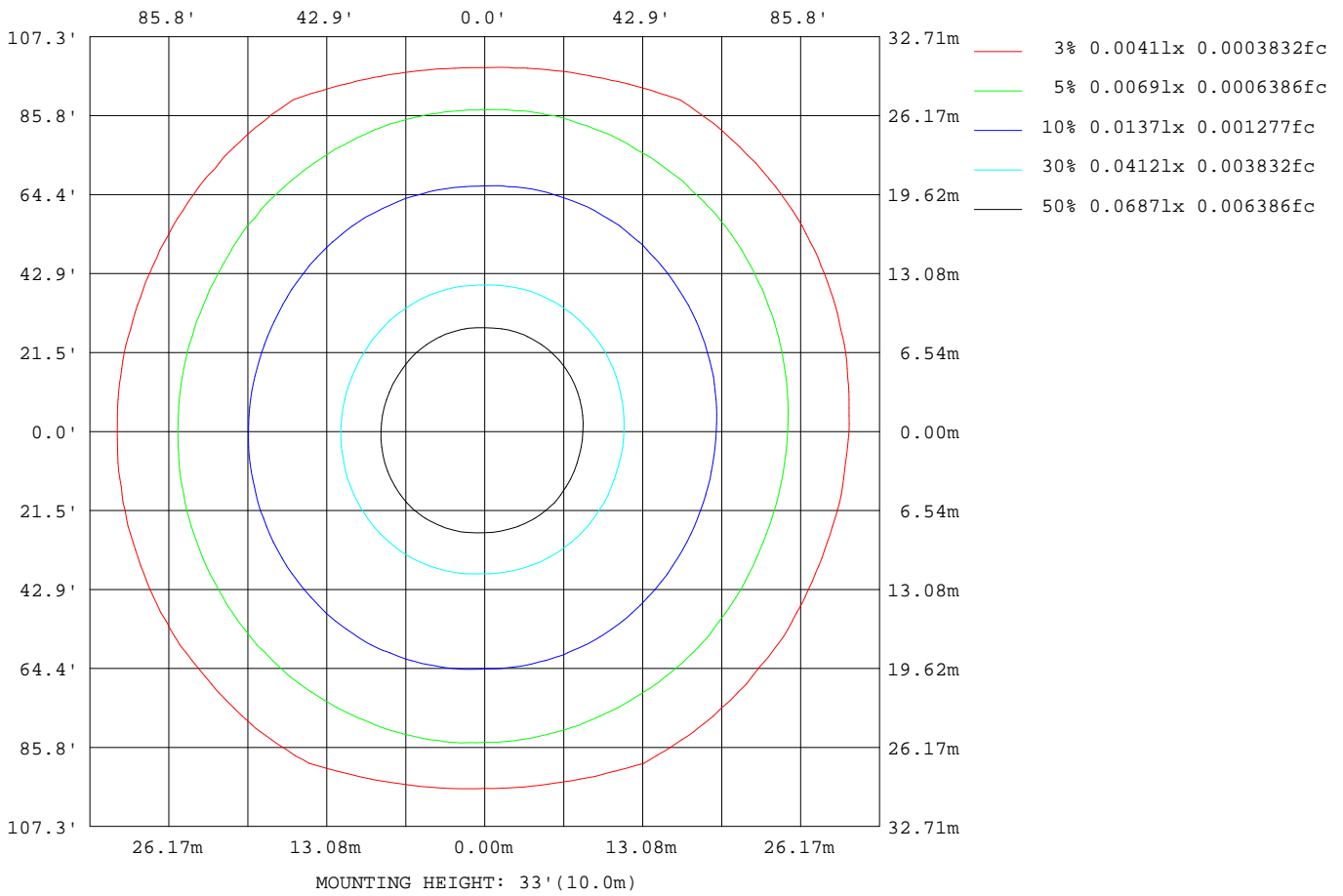
C Range: 0 - 360DEG  
 C Interval: 5.0DEG  
 Test Speed: HIGH  
 Temperature: 20DEG  
 Operators: Y  
 Test Date: 2023-07-13

$\gamma$  Range: 0 - 90DEG  
 $\gamma$  Interval: 0.5DEG  
 Test System: EVERFINE GO-2000B\_V1 SYSTEM V2.0.291  
 Humidity: 65.0%  
 Test Distance: 8.750m [K=1.0000]  
 Remarks:



## ISOLUX DIAGRAM

Test:U:12.03V I:0.2445A P:1.869W PF:0.6352 Lamp Flux:235x1 lm		
NAME: 487123-Amber	TYPE:487123-Amber	WEIGHT:
SPEC.:	DIM.:	SERIAL No.:
MFR.:	SUR.:	PROTECTION ANGLE:



C Range: 0 - 360DEG  
 C Interval: 5.0DEG  
 Test Speed: HIGH  
 Temperature:20DEG  
 Operators:Y  
 Test Date:2023-07-13

γ Range: 0 - 90DEG  
 γ Interval: 0.5DEG  
 Test System:EVERFINE GO-2000B\_V1 SYSTEM V2.0.291  
 Humidity:65.0%  
 Test Distance:8.750m [K=1.0000]  
 Remarks:

## LED Avg.L Report

Test:U:12.03V I:0.2445A P:1.869W PF:0.6352 Lamp Flux:235x1 lm		
NAME: 487123-Amber	TYPE:487123-Amber	WEIGHT:
SPEC.:	DIM.:	SERIAL No.:
MFR.:	SUR.:	PROTECTION ANGLE:

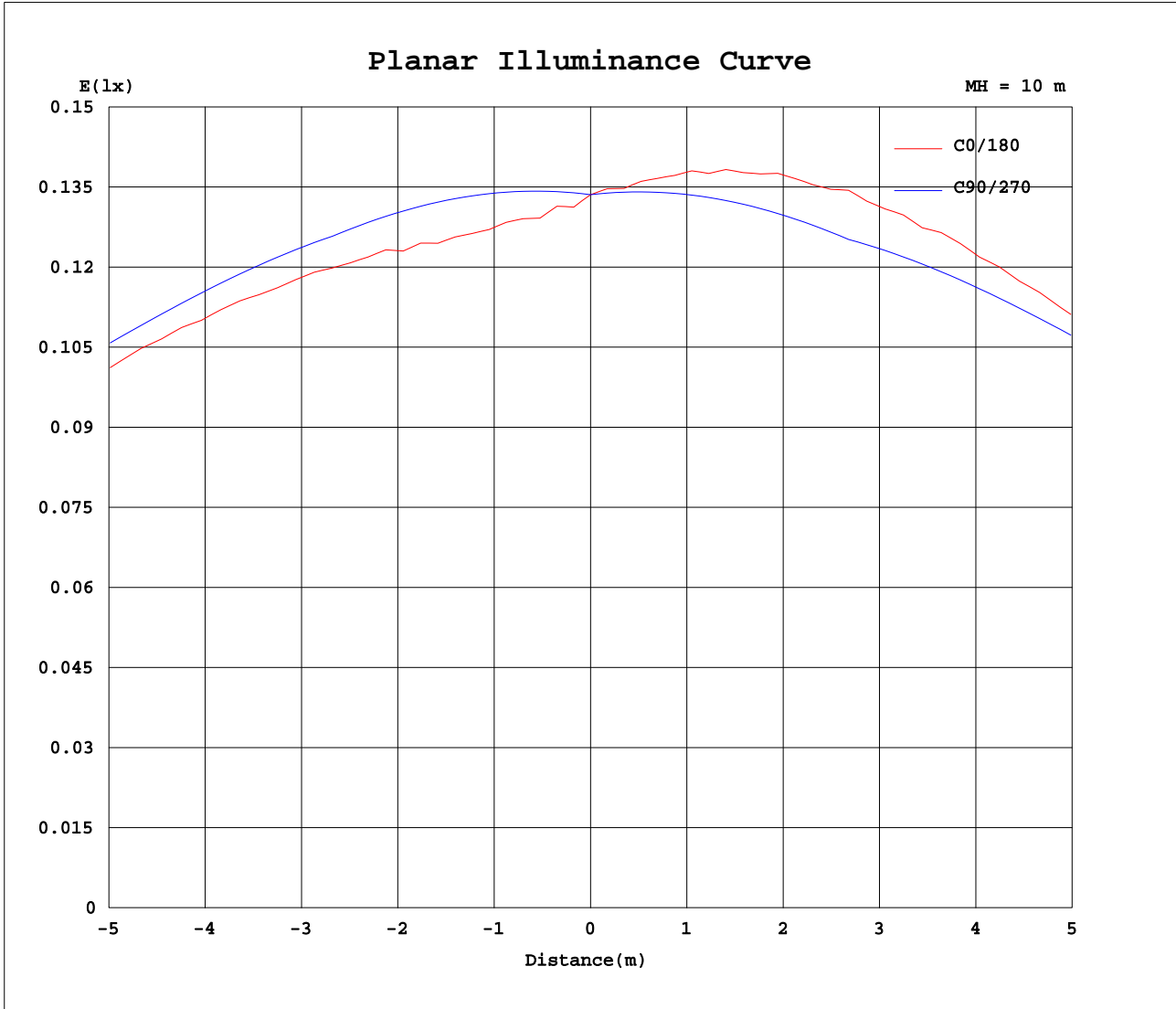
AvgL	cd/m2
L_0~180(65)av	166
L_0~180(75)av	249
L_0~180(85)av	400
L_90~270(65)av	181
L_90~270(75)av	289
L_90~270(85)av	0
L_45(65)av	176
L_45(75)av	267
L_45(85)av	0

Standard: GB/T 29293-2012

C Range: 0 - 360DEG  
C Interval: 5.0DEG  
Test Speed: HIGH  
Temperature:20DEG  
Operators:Y  
Test Date:2023-07-13

γ Range: 0 - 90DEG  
γ Interval: 0.5DEG  
Test System:EVERFINE GO-2000B\_V1 SYSTEM V2.0.291  
Humidity:65.0%  
Test Distance:8.750m [K=1.0000]  
Remarks:

Planar Illuminance Curve



C Range: 0 - 360DEG  
 C Interval: 5.0DEG  
 Test Speed: HIGH  
 Temperature: 20DEG  
 Operators: Y  
 Test Date: 2023-07-13

γ Range: 0 - 90DEG  
 γ Interval: 0.5DEG  
 Test System: EVERFINE GO-2000B\_V1 SYSTEM V2.0.291  
 Humidity: 65.0%  
 Test Distance: 8.750m [K=1.0000]  
 Remarks:

### LUMINOUS DISTRIBUTION INTENSITY DATA

Test:U:12.03V I:0.2445A P:1.869W PF:0.6352 Lamp Flux:235x1 lm		
NAME: 487123-Amber	TYPE:487123-Amber	WEIGHT:
SPEC.:	DIM.:	SERIAL No.:
MFR.:	SUR.:	PROTECTION ANGLE:

Table--1 UNIT: cd

$\gamma$ (DEG)	C (DEG)																		
	0	5	10	15	20	25	30	35	40	45	50	55	60	65	70	75	80	85	90
0	13.4	13.4	13.4	13.4	13.4	13.4	13.4	13.4	13.4	13.4	13.4	13.4	13.4	13.4	13.4	13.4	13.4	13.4	13.4
5	13.0	13.0	13.0	13.1	13.1	13.1	13.1	13.2	13.2	13.2	13.2	13.2	13.3	13.4	13.4	13.4	13.4	13.5	13.6
10	13.0	13.1	13.1	13.2	13.2	13.2	13.3	13.3	13.3	13.4	13.4	13.5	13.5	13.5	13.5	13.6	13.7	13.7	13.8
15	13.3	13.4	13.4	13.5	13.5	13.6	13.6	13.7	13.7	13.7	13.7	13.7	13.8	13.8	13.9	13.8	13.9	14.0	14.0
20	13.7	13.8	13.8	13.9	13.9	13.9	14.0	14.0	14.0	14.1	14.1	14.1	14.2	14.1	14.2	14.2	14.2	14.3	14.3
25	14.1	14.1	14.2	14.2	14.3	14.3	14.3	14.3	14.4	14.4	14.4	14.4	14.5	14.5	14.5	14.6	14.6	14.6	14.7
30	14.4	14.4	14.4	14.4	14.4	14.4	14.5	14.6	14.6	14.7	14.7	14.7	14.8	14.8	14.9	14.9	14.9	15.0	15.0
35	14.6	14.6	14.6	14.6	14.6	14.6	14.6	14.7	14.8	14.9	14.9	14.9	15.0	15.0	15.0	15.0	15.1	15.1	15.1
40	14.6	14.6	14.6	14.6	14.6	14.7	14.7	14.8	14.9	15.0	15.0	15.0	15.1	15.1	15.2	15.2	15.2	15.3	15.3
45	14.6	14.6	14.6	14.5	14.6	14.6	14.7	14.8	14.9	14.9	15.0	15.0	15.1	15.2	15.2	15.2	15.3	15.4	15.4
50	14.6	14.6	14.6	14.4	14.4	14.5	14.6	14.6	14.7	14.8	14.9	15.0	15.1	15.2	15.2	15.2	15.2	15.3	15.2
55	14.5	14.3	14.3	14.2	14.3	14.3	14.3	14.4	14.5	14.6	14.8	14.8	14.9	14.9	15.0	15.0	15.0	15.1	15.1
60	14.2	14.1	14.0	13.9	13.9	14.0	14.0	14.2	14.2	14.3	14.4	14.5	14.6	14.7	14.8	14.9	14.9	14.9	15.0
65	13.9	13.7	13.6	13.6	13.5	13.5	13.6	13.7	13.9	13.9	14.1	14.2	14.3	14.4	14.5	14.5	14.6	14.7	14.7
70	13.5	13.3	13.2	13.1	13.0	13.1	13.1	13.2	13.3	13.5	13.5	13.6	13.7	13.8	14.0	14.2	14.3	14.4	14.5
75	13.0	12.7	12.6	12.5	12.5	12.5	12.5	12.6	12.6	12.7	12.9	13.1	13.1	13.3	13.5	13.8	13.9	14.1	14.2
80	12.1	11.8	11.7	11.5	11.4	11.3	11.4	11.6	11.9	9.80	7.37	5.46	3.89	2.66	1.68	0.95	0.42	0.11	0.00
85	10.1	9.59	9.45	9.26	8.20	3.42	0.00	0.00	0.00	0.00	0.00	0.00	0.00	0.00	0.00	0.00	0.00	0.00	0.00
90	0.02	0.00	0.00	0.00	0.00	0.00	0.00	0.00	0.00	0.00	0.00	0.00	0.00	0.00	0.00	0.00	0.00	0.00	0.00

<p>C Range: 0 - 360DEG            C Interval: 5.0DEG            Test Speed: HIGH            Temperature:20DEG            Operators:Y            Test Date:2023-07-13</p>	<p><math>\gamma</math> Range: 0 - 90DEG  <math>\gamma</math> Interval: 0.5DEG            Test System:EVERFINE GO-2000B_V1 SYSTEM V2.0.291            Humidity:65.0%            Test Distance:8.750m [K=1.0000]            Remarks:</p>
--	--

### LUMINOUS DISTRIBUTION INTENSITY DATA

Test:U:12.03V I:0.2445A P:1.869W PF:0.6352 Lamp Flux:235x1 lm		
NAME: 487123-Amber	TYPE:487123-Amber	WEIGHT:
SPEC.:	DIM.:	SERIAL No.:
MFR.:	SUR.:	PROTECTION ANGLE:

Table--2

UNIT: cd

C( DEG) γ (DEG)	95	100	105	110	115	120	125	130	135	140	145	150	155	160	165	170	175	180	185
0	13.4	13.4	13.4	13.4	13.4	13.4	13.4	13.4	13.4	13.4	13.4	13.4	13.4	13.4	13.4	13.4	13.4	13.4	13.4
5	13.6	13.7	13.7	13.7	13.7	13.8	13.8	13.8	13.8	13.9	13.9	13.9	13.9	13.9	13.9	13.9	13.9	13.9	13.9
10	13.9	13.9	14.0	14.0	14.1	14.2	14.3	14.3	14.4	14.4	14.4	14.4	14.4	14.4	14.4	14.4	14.4	14.4	14.4
15	14.1	14.2	14.3	14.4	14.6	14.6	14.7	14.7	14.8	14.8	14.8	14.8	14.9	14.9	14.9	14.9	14.9	14.9	14.9
20	14.5	14.5	14.7	14.8	14.9	15.0	15.0	15.1	15.2	15.2	15.2	15.3	15.3	15.3	15.3	15.3	15.3	15.2	15.2
25	14.8	14.9	15.1	15.2	15.2	15.3	15.4	15.4	15.5	15.6	15.6	15.7	15.6	15.6	15.6	15.6	15.5	15.5	15.5
30	15.2	15.2	15.4	15.5	15.6	15.6	15.7	15.8	15.8	15.8	15.9	15.8	15.7	15.9	15.8	15.8	15.8	15.7	15.7
35	15.3	15.4	15.6	15.6	15.7	15.9	15.9	16.0	16.0	16.0	16.0	16.0	16.0	16.0	15.9	15.9	15.8	15.7	15.7
40	15.4	15.6	15.6	15.8	15.9	15.9	16.1	16.1	16.1	16.1	16.1	16.0	16.0	15.9	15.9	15.9	15.8	15.7	15.7
45	15.5	15.7	15.8	15.8	15.9	16.0	16.1	16.1	16.1	16.1	16.0	15.9	15.9	15.8	15.8	15.8	15.7	15.7	15.6
50	15.4	15.6	15.7	15.8	15.9	16.0	16.1	16.0	16.0	15.9	15.9	15.8	15.7	15.8	15.6	15.6	15.5	15.4	15.4
55	15.3	15.4	15.5	15.7	15.7	15.8	15.8	15.8	15.8	15.8	15.6	15.5	15.5	15.4	15.4	15.3	15.2	15.1	15.2
60	15.1	15.2	15.4	15.5	15.6	15.6	15.5	15.5	15.4	15.4	15.3	15.2	15.1	15.0	14.9	14.8	14.8	14.8	14.7
65	14.9	14.9	15.1	15.1	15.2	15.2	15.2	15.1	14.9	14.8	14.8	14.7	14.6	14.5	14.5	14.4	14.3	14.2	14.2
70	14.6	14.6	14.7	14.6	14.6	14.6	14.5	14.5	14.4	14.3	14.2	14.1	14.0	14.0	13.8	13.8	13.7	13.7	13.8
75	14.4	14.3	14.3	14.1	14.0	14.0	13.9	13.7	13.5	13.2	13.0	13.1	13.1	12.9	13.1	12.9	12.8	12.8	12.9
80	0.11	0.43	0.98	1.76	2.80	4.12	5.82	7.81	10.1	12.0	11.4	10.9	10.7	10.9	10.9	11.0	10.8	10.9	11.0
85	0.00	0.00	0.00	0.00	0.00	0.00	0.00	0.00	0.00	0.00	0.00	0.00	2.85	6.22	6.82	6.88	6.92	3.81	7.45
90	0.00	0.00	0.00	0.00	0.00	0.00	0.00	0.00	0.00	0.00	0.00	0.00	0.00	0.00	0.00	0.00	0.00	0.00	0.00

C Range: 0 - 360DEG  
 C Interval: 5.0DEG  
 Test Speed: HIGH  
 Temperature:20DEG  
 Operators:Y  
 Test Date:2023-07-13

γ Range: 0 - 90DEG  
 γ Interval: 0.5DEG  
 Test System:EVERFINE GO-2000B\_V1 SYSTEM V2.0.291  
 Humidity:65.0%  
 Test Distance:8.750m [K=1.0000]  
 Remarks:

LUMINOUS DISTRIBUTION INTENSITY DATA

Test:U:12.03V I:0.2445A P:1.869W PF:0.6352 Lamp Flux:235x1 lm		
NAME: 487123-Amber	TYPE:487123-Amber	WEIGHT:
SPEC.:	DIM.:	SERIAL No.:
MFR.:	SUR.:	PROTECTION ANGLE:

Table--3

UNIT: cd

C(DEG) γ (DEG)	190	195	200	205	210	215	220	225	230	235	240	245	250	255	260	265	270	275	280
0	13.4	13.4	13.4	13.4	13.4	13.4	13.4	13.4	13.4	13.4	13.4	13.4	13.4	13.4	13.4	13.4	13.4	13.4	13.4
5	13.9	13.9	13.9	13.9	13.9	13.9	13.8	13.8	13.8	13.8	13.7	13.7	13.7	13.7	13.6	13.6	13.5	13.5	13.4
10	14.4	14.4	14.4	14.4	14.4	14.3	14.3	14.2	14.2	14.2	14.1	14.0	14.0	13.9	13.9	13.8	13.7	13.7	13.7
15	14.9	14.8	14.8	14.8	14.7	14.7	14.7	14.6	14.5	14.5	14.4	14.3	14.3	14.1	14.1	14.0	13.9	14.0	14.0
20	15.2	15.1	15.1	15.1	15.0	15.0	14.9	14.9	14.8	14.8	14.8	14.7	14.7	14.6	14.5	14.5	14.4	14.4	14.3
25	15.4	15.4	15.3	15.3	15.3	15.2	15.2	15.2	15.2	15.2	15.2	15.1	15.1	15.0	15.0	14.9	14.8	14.8	14.8
30	15.6	15.5	15.6	15.4	15.4	15.5	15.5	15.5	15.5	15.5	15.5	15.5	15.5	15.5	15.4	15.3	15.3	15.2	15.2
35	15.7	15.7	15.7	15.6	15.6	15.6	15.6	15.6	15.7	15.7	15.7	15.8	15.8	15.7	15.7	15.5	15.5	15.5	15.5
40	15.7	15.6	15.6	15.6	15.6	15.7	15.7	15.8	15.8	15.9	15.9	15.9	16.0	15.9	15.9	15.8	15.8	15.7	15.7
45	15.6	15.6	15.6	15.6	15.6	15.6	15.7	15.8	15.9	15.9	16.0	16.1	16.0	16.1	16.1	16.0	16.0	16.0	16.1
50	15.5	15.5	15.5	15.5	15.5	15.6	15.7	15.8	16.0	16.0	16.1	16.2	16.2	16.2	16.1	16.1	16.0	16.1	16.1
55	15.2	15.2	15.1	15.3	15.3	15.4	15.6	15.8	15.8	16.0	16.0	16.1	16.2	16.2	16.2	16.1	16.1	16.2	16.2
60	14.8	14.7	14.8	14.9	15.1	15.2	15.3	15.5	15.7	15.8	16.0	16.0	16.1	16.2	16.2	16.1	16.1	16.2	16.3
65	14.3	14.4	14.4	14.5	14.6	14.8	15.1	15.3	15.4	15.6	15.8	15.8	16.0	16.0	16.1	16.0	16.0	16.1	16.2
70	13.8	13.8	14.0	14.0	14.2	14.3	14.7	14.7	15.0	15.1	15.3	15.5	15.7	15.8	15.8	15.8	15.8	15.9	16.0
75	13.0	13.1	13.1	13.4	13.5	13.7	14.0	14.2	14.4	14.7	14.9	15.1	15.4	15.6	15.6	15.7	15.7	15.8	15.9
80	11.5	11.5	11.7	11.8	12.2	12.8	13.3	11.0	8.34	6.20	4.43	3.04	1.92	1.08	0.47	0.12	0.00	0.12	0.48
85	7.86	8.17	7.78	3.50	0.00	0.00	0.00	0.00	0.00	0.00	0.00	0.00	0.00	0.00	0.00	0.00	0.00	0.00	0.00
90	0.00	0.00	0.00	0.00	0.00	0.00	0.00	0.00	0.00	0.00	0.00	0.00	0.00	0.00	0.00	0.00	0.00	0.00	0.00

C Range: 0 - 360DEG  
 C Interval: 5.0DEG  
 Test Speed: HIGH  
 Temperature:20DEG  
 Operators:Y  
 Test Date:2023-07-13

γ Range: 0 - 90DEG  
 γ Interval: 0.5DEG  
 Test System:EVERFINE GO-2000B\_V1 SYSTEM V2.0.291  
 Humidity:65.0%  
 Test Distance:8.750m [K=1.0000]  
 Remarks:

## LUMINOUS DISTRIBUTION INTENSITY DATA

Test:U:12.03V I:0.2445A P:1.869W PF:0.6352 Lamp Flux:235x1 lm		
NAME: 487123-Amber	TYPE:487123-Amber	WEIGHT:
SPEC.:	DIM.:	SERIAL No.:
MFR.:	SUR.:	PROTECTION ANGLE:

Table--4

UNIT: cd

C (DEG) \ γ (DEG)	285	290	295	300	305	310	315	320	325	330	335	340	345	350	355				
0	13.4	13.4	13.4	13.4	13.4	13.4	13.4	13.4	13.4	13.4	13.4	13.4	13.4	13.4	13.4				
5	13.4	13.4	13.4	13.3	13.3	13.2	13.2	13.2	13.2	13.2	13.1	13.1	13.1	13.0	13.0				
10	13.6	13.6	13.6	13.5	13.5	13.4	13.4	13.4	13.3	13.3	13.2	13.2	13.2	13.1	13.1				
15	13.9	13.9	13.8	13.8	13.8	13.7	13.7	13.7	13.7	13.6	13.6	13.5	13.5	13.4	13.4				
20	14.3	14.3	14.2	14.2	14.1	14.1	14.0	14.1	14.0	14.0	14.0	13.9	13.9	13.8	13.8				
25	14.7	14.7	14.7	14.7	14.5	14.5	14.5	14.5	14.5	14.4	14.4	14.4	14.3	14.2	14.2				
30	15.2	15.2	15.2	15.1	15.1	15.0	15.0	14.9	14.8	14.8	14.7	14.7	14.6	14.5	14.5				
35	15.6	15.5	15.4	15.5	15.5	15.4	15.3	15.3	15.2	15.1	15.0	14.9	14.9	14.8	14.7				
40	15.8	15.8	15.8	15.8	15.7	15.7	15.6	15.6	15.4	15.4	15.2	15.1	15.0	14.9	14.8				
45	16.1	16.0	16.0	16.0	16.0	15.8	15.8	15.7	15.6	15.5	15.4	15.3	15.1	14.9	14.8				
50	16.2	16.2	16.3	16.2	16.1	16.0	15.9	15.7	15.7	15.6	15.3	15.2	15.0	14.9	14.8				
55	16.2	16.2	16.2	16.2	16.1	16.0	15.8	15.8	15.6	15.4	15.3	15.1	14.9	14.8	14.6				
60	16.4	16.2	16.3	16.2	16.1	15.9	15.7	15.6	15.4	15.2	15.0	14.9	14.7	14.5	14.3				
65	16.2	16.2	16.2	16.0	16.0	15.8	15.5	15.4	15.1	15.0	14.7	14.6	14.5	14.2	14.0				
70	16.0	15.9	15.8	15.6	15.5	15.4	15.2	15.1	14.9	14.7	14.5	14.3	14.1	13.9	13.7				
75	15.8	15.6	15.4	15.2	15.1	15.0	14.8	14.7	14.5	14.3	14.2	13.9	13.8	13.5	13.1				
80	1.09	1.95	3.09	4.54	6.39	8.71	11.6	14.2	14.0	13.6	13.3	13.1	12.9	12.6	12.4				
85	0.00	0.00	0.00	0.00	0.00	0.00	0.00	0.00	0.00	0.00	0.00	4.23	10.1	11.0	10.7	10.5			
90	0.00	0.00	0.00	0.00	0.00	0.00	0.00	0.00	0.00	0.00	0.00	0.00	0.00	0.00	0.00				

C Range: 0 - 360DEG  
 C Interval: 5.0DEG  
 Test Speed: HIGH  
 Temperature:20DEG  
 Operators:Y  
 Test Date:2023-07-13

γ Range: 0 - 90DEG  
 γ Interval: 0.5DEG  
 Test System:EVERFINE GO-2000B\_V1 SYSTEM V2.0.291  
 Humidity:65.0%  
 Test Distance:8.750m [K=1.0000]  
 Remarks: