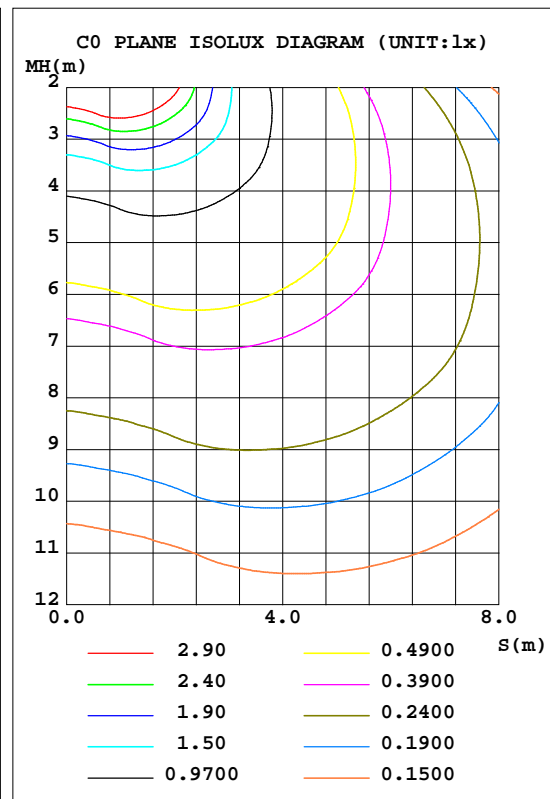
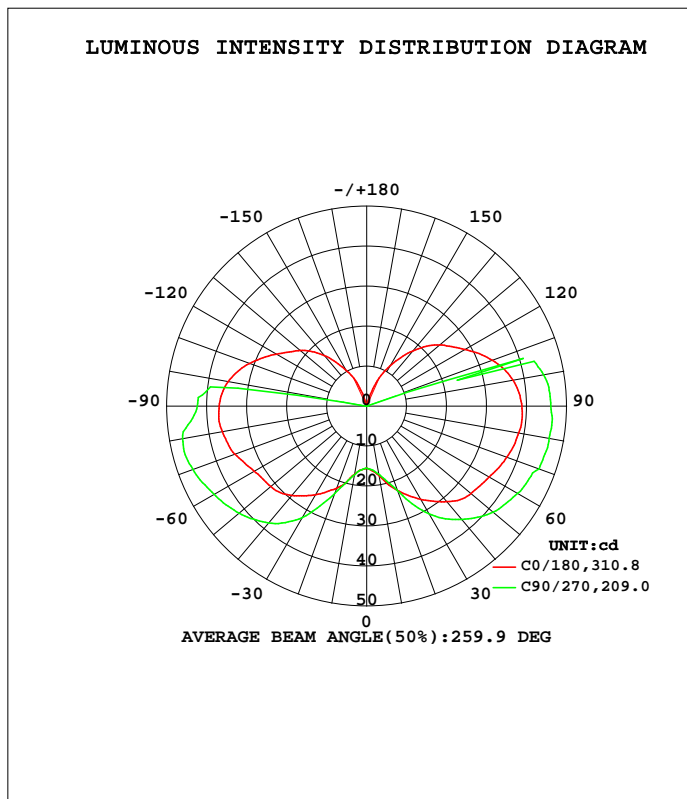


LUMINAIRE PHOTOMETRIC TEST REPORT

Test:U:11.892V I:0.3678A P:3.1827W PF:0.7277 Freq:60.00Hz Lamp Flux:349.895x1 lm		
NAME: 487199-GY6.35-4W-2700K	TYPE:	WEIGHT:
SPEC.:	DIM.:	SERIAL No.:
MFR.:	SUR.:	Shielding Angle:

DATA OF LAMP		PHOTOMETRIC DATA Eff: 109.93 lm/W			
MODEL		I _{max} (cd)	47.04	S/MH(C0/180)	2.48
NOMINAL POWER(W)	--	LOR(%)	100.0	S/MH(C90/270)	2.87
RATED VOLTAGE(V)	--	TOTAL FLUX(lm)	349.89	η UP, DN(C0-180)	20.3, 31.7
NOMINAL FLUX(lm)	349.895	CIE CLASS	SEMI-D.	η UP, DN(C180-360)	17.3, 30.7
LAMPS INSIDE	1	η up(%)	37.6	CIBSE SHR NOM	2.00
TEST VOLTAGE(V)	--	η down(%)	62.4	CIBSE SHR MAX	2.00



C Range: 0 - 360DEG
 C Interval: 22.5DEG
 Test Speed: HIGH
 Temperature: 25.3DEG
 Operators: DAMIN
 Test Date: 2022-06-10

γ Range: 0 - 180DEG
 γ Interval: 1.0DEG
 Test System: EVERFINE GO-3000H_V1 SYSTEM V2.00.411
 Humidity: 65.0%
 Test Distance: 9.000m [K=1.0000]
 Remarks:

ZONAL FLUX DIAGRAM

ZONAL FLUX DIAGRAM:

γ	C0	C45	C90	C135	C180	C225	C270	C315	γ	Φ zone	Φ total	%lum,lamp
10	17.62	17.48	17.30	17.35	17.34	17.37	17.39	17.26	0- 10	1.576	1.576	0.45,0.45
20	22.42	22.51	22.44	22.42	21.87	22.62	23.13	22.37	10- 20	5.672	7.247	2.07,2.07
30	26.90	27.89	31.06	29.22	25.62	27.84	32.18	28.37	20- 30	11.88	19.13	5.47,5.47
40	31.21	32.39	37.03	38.40	29.19	32.17	38.15	35.21	30- 40	19.61	38.73	11.1,11.1
50	34.07	35.33	41.29	41.20	31.32	35.02	41.68	37.03	40- 50	27.24	65.98	18.9,18.9
60	35.44	36.22	43.64	41.33	32.52	35.74	44.12	37.12	50- 60	33.23	99.20	28.4,28.4
70	37.34	36.39	45.89	41.23	35.11	35.40	46.27	37.40	60- 70	37.54	136.7	39.1,39.1
80	38.59	36.43	46.38	41.14	36.70	34.88	46.78	37.28	70- 80	40.30	177.0	50.6,50.6
90	38.81	35.89	46.08	40.79	36.89	34.43	42.33	36.54	80- 90	41.24	218.3	62.4,62.4
100	37.24	35.38	45.00	40.63	35.20	33.91	5.865	35.62	90-100	40.13	258.4	73.9,73.9
110	33.50	33.49	0.5761	38.28	31.21	31.56	0.1938	33.74	100-110	34.42	292.8	83.7,83.7
120	28.36	30.54	0.2224	35.84	26.08	28.19	0.1712	30.62	110-120	27.31	320.1	91.5,91.5
130	23.85	25.92	0.2097	31.99	21.71	22.94	0.1750	26.71	120-130	17.44	337.6	96.5,96.5
140	18.05	12.63	0.1863	13.56	16.56	0.9785	0.1645	17.40	130-140	8.500	346.1	98.9,98.9
150	11.57	0.2202	0.1615	0.1880	10.40	0.1862	0.1440	0.1871	140-150	2.838	348.9	99.7,99.7
160	4.611	0.1650	0.1397	0.1413	4.227	0.1479	0.1262	0.1794	150-160	0.8051	349.7	100,100
170	0.1229	0.1229	0.1240	0.1200	0.1189	0.1185	0.1172	0.1145	160-170	0.1636	349.9	100,100
180	0.1172	0.1156	0.1149	0.1138	0.1201	0.1170	0.1164	0.1146	170-180	0.0112	349.9	100,100
DEG	LUMINOUS INTENSITY:cd									UNIT:lm		

Conical surface Flux(90deg): 51.48 lm

%lum = 14.7%
%lamp = 14.7%

Conical surface Flux(120deg): 99.201 lm

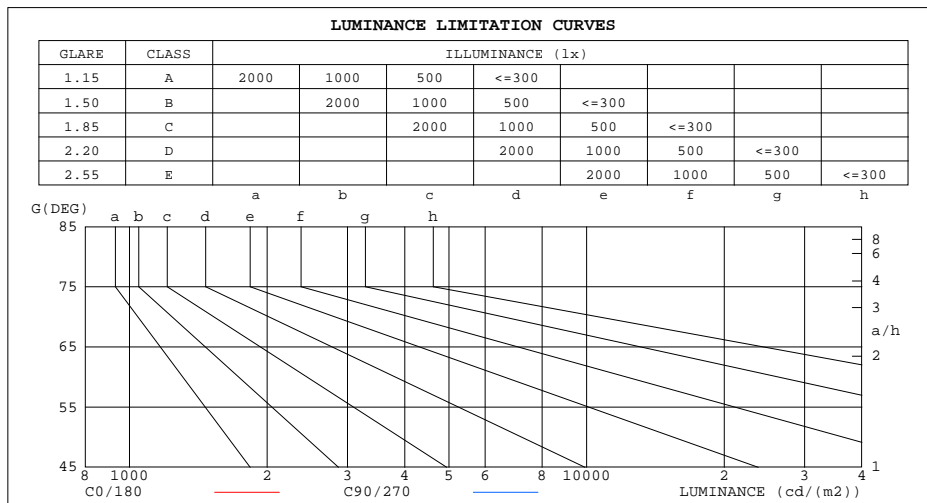
%lum = 28.4%
%lamp = 28.4%

C Range: 0 - 360DEG
C Interval: 22.5DEG
Test Speed: HIGH
Temperature:25.3DEG
Operators:DAMIN
Test Date:2022-06-10

γ Range: 0 - 180DEG
 γ Interval: 1.0DEG
Test System:EVERFINE GO-3000H_V1 SYSTEM V2.00.411
Humidity:65.0%
Test Distance:9.000m [K=1.0000]
Remarks:

LUMINANCE LIMITATION CURVES

Test:U:11.892V I:0.3678A P:3.1827W PF:0.7277 Freq:60.00Hz Lamp Flux:349.895x1 lm		
NAME: 487199-GY6.35-4W-2700K	TYPE:	WEIGHT:
SPEC.:	DIM.:	SERIAL No.:
MFR.:	SUR.:	Shielding Angle:



LUMINANCE cd/(m2)		
G(DEG)	C0/180	C90/270
85	468779	528981
80	232796	264663
75	154349	176677
70	114366	132957
65	90393	104286
60	74247	86477
55	63338	73469
50	55516	63648
45	49059	55110

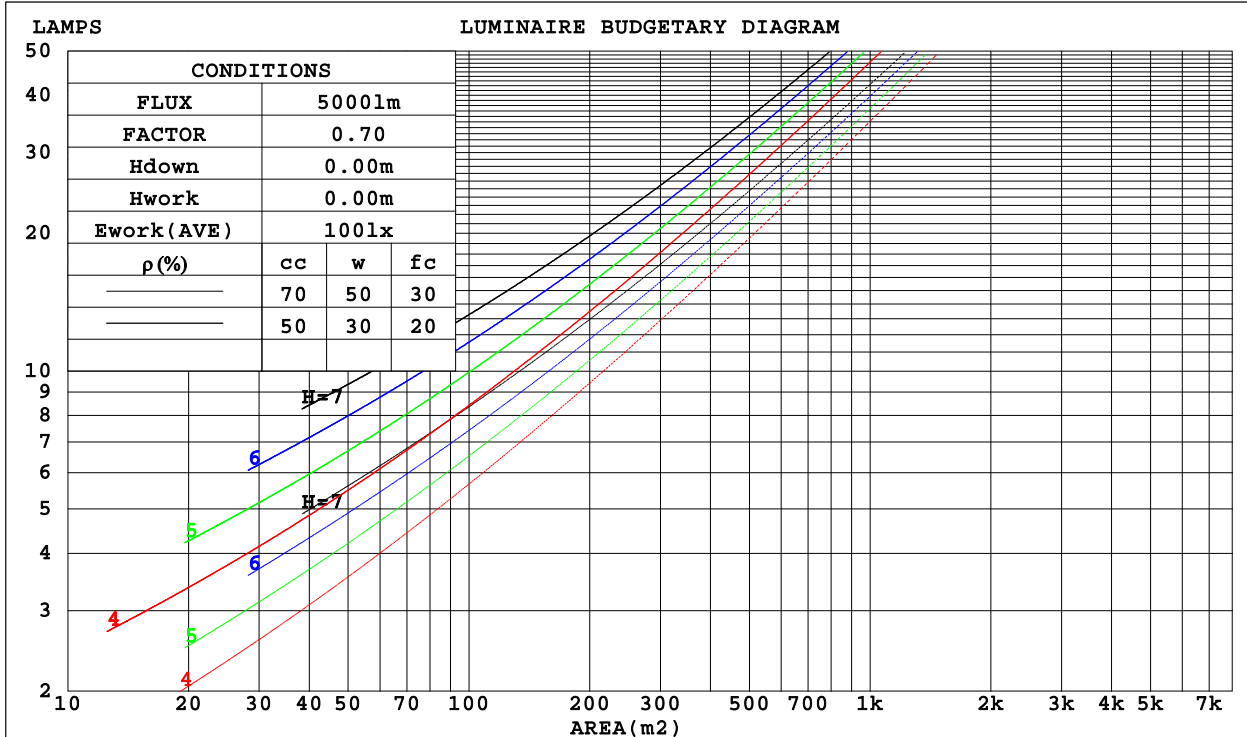
C Range: 0 - 360DEG
 C Interval: 22.5DEG
 Test Speed: HIGH
 Temperature: 25.3DEG
 Operators: DAMIN
 Test Date: 2022-06-10

γ Range: 0 - 180DEG
 γ Interval: 1.0DEG
 Test System: EVERFINE GO-3000H_V1 SYSTEM V2.00.411
 Humidity: 65.0%
 Test Distance: 9.000m [K=1.0000]
 Remarks:

CU AND LUMINAIRE BUDGETARY ESTIMATE DIAGRAM

Test:U:11.892V I:0.3678A P:3.1827W PF:0.7277 Freq:60.00Hz Lamp Flux:349.895x1 lm		
NAME: 487199-GY6.35-4W-2700K	TYPE:	WEIGHT:
SPEC.:	DIM.:	SERIAL No.:
MFR.:	SUR.:	Shielding Angle:

ρcc	80%			70%			50%			30%			10%			0
ρw	50%	30%	10%	50%	30%	10%	50%	30%	10%	50%	30%	10%	50%	30%	10%	0
ρfc	20%			20%			20%			20%			20%			0
RCR	RCR:Room Cavity Ratio						Coefficients of Utilization(CU)									
0.0	1.10	1.10	1.10	1.03	1.03	1.03	.90	.90	.90	.78	.78	.78	.67	.67	.67	.62
1.0	.88	.81	.76	.82	.76	.71	.70	.66	.62	.60	.56	.53	.50	.48	.45	.40
2.0	.73	.64	.57	.68	.60	.54	.58	.52	.47	.49	.44	.40	.41	.37	.34	.29
3.0	.62	.53	.45	.58	.49	.42	.49	.42	.37	.42	.36	.31	.34	.30	.26	.22
4.0	.54	.44	.36	.50	.41	.34	.43	.35	.30	.36	.30	.25	.30	.25	.21	.17
5.0	.47	.37	.30	.44	.35	.28	.38	.30	.24	.32	.25	.21	.26	.21	.17	.14
6.0	.42	.32	.25	.39	.30	.24	.33	.26	.21	.28	.22	.17	.23	.18	.14	.11
7.0	.37	.28	.22	.35	.26	.20	.30	.23	.18	.25	.19	.15	.21	.16	.12	.09
8.0	.34	.25	.19	.31	.23	.17	.27	.20	.15	.23	.17	.13	.19	.14	.11	.08
9.0	.31	.22	.16	.29	.21	.15	.25	.18	.13	.21	.15	.11	.17	.13	.09	.07
10.0	.28	.20	.14	.26	.19	.13	.22	.16	.12	.19	.14	.10	.16	.11	.08	.06



C Range: 0 - 360DEG
 C Interval: 22.5DEG
 Test Speed: HIGH
 Temperature:25.3DEG
 Operators:DAMIN
 Test Date:2022-06-10

γ Range: 0 - 180DEG
 γ Interval: 1.0DEG
 Test System:EVERFINE GO-3000H_V1 SYSTEM V2.00.411
 Humidity:65.0%
 Test Distance:9.000m [K=1.0000]
 Remarks:

WEC AND CCEC

Test:U:11.892V I:0.3678A P:3.1827W PF:0.7277 Freq:60.00Hz Lamp Flux:349.895x1 lm		
NAME: 487199-GY6.35-4W-2700K	TYPE:	WEIGHT:
SPEC.:	DIM.:	SERIAL No.:
MFR.:	SUR.:	Shielding Angle:

pcc	80%			70%			50%			30%			10%			0
pw	50%	30%	10%	50%	30%	10%	50%	30%	10%	50%	30%	10%	50%	30%	10%	0
pfc	20%			20%			20%			20%			20%			0
RCR	RCR:Room Cavity Ratio						Wall Exitance Coefficients(WEC)									
0.0																
1.0	.449	.255	.081	.430	.245	.078	.395	.226	.072	.362	.209	.067	.332	.193	.062	
2.0	.370	.203	.062	.353	.194	.060	.321	.178	.055	.291	.163	.051	.264	.149	.047	
3.0	.320	.170	.051	.304	.163	.049	.275	.149	.045	.248	.136	.042	.223	.123	.038	
4.0	.283	.147	.043	.269	.141	.042	.242	.128	.038	.217	.117	.035	.194	.105	.032	
5.0	.254	.129	.037	.241	.124	.036	.216	.113	.033	.193	.102	.030	.172	.092	.028	
6.0	.231	.116	.033	.219	.110	.032	.196	.100	.029	.175	.091	.027	.155	.082	.024	
7.0	.211	.104	.030	.200	.100	.028	.179	.091	.026	.160	.082	.024	.141	.073	.022	
8.0	.195	.095	.027	.184	.091	.026	.165	.082	.024	.147	.074	.021	.130	.067	.019	
9.0	.180	.087	.024	.171	.083	.023	.153	.076	.021	.136	.068	.020	.120	.061	.018	
10.0	.168	.081	.022	.159	.077	.021	.143	.070	.020	.127	.063	.018	.112	.056	.016	

pcc	80%			70%			50%			30%			10%			0
pw	50%	30%	10%	50%	30%	10%	50%	30%	10%	50%	30%	10%	50%	30%	10%	0
pfc	20%			20%			20%			20%			20%			0
RCR	RCR:Room Cavity Ratio						Ceiling Cavity Exitance Coefficients(CCEC)									
0.0	.477	.477	.477	.408	.408	.408	.278	.278	.278	.160	.160	.160	.051	.051	.051	
1.0	.479	.444	.412	.410	.381	.355	.280	.262	.245	.161	.152	.143	.052	.049	.046	
2.0	.474	.422	.379	.406	.364	.328	.278	.252	.229	.160	.146	.134	.051	.047	.044	
3.0	.467	.407	.360	.400	.351	.312	.275	.244	.219	.159	.142	.129	.051	.046	.042	
4.0	.459	.395	.347	.394	.342	.301	.271	.238	.212	.157	.139	.126	.050	.045	.041	
5.0	.451	.386	.338	.387	.334	.294	.267	.233	.208	.155	.137	.123	.050	.045	.041	
6.0	.444	.379	.332	.381	.328	.289	.263	.230	.205	.153	.135	.122	.049	.044	.040	
7.0	.436	.373	.328	.375	.323	.286	.259	.226	.202	.151	.133	.121	.049	.044	.040	
8.0	.430	.367	.325	.370	.319	.283	.256	.224	.201	.149	.132	.120	.048	.043	.040	
9.0	.423	.363	.322	.365	.315	.281	.253	.221	.199	.147	.131	.119	.048	.043	.039	
10.0	.417	.359	.320	.360	.312	.279	.249	.219	.198	.146	.130	.118	.047	.043	.039	

C Range: 0 - 360DEG
 C Interval: 22.5DEG
 Test Speed: HIGH
 Temperature:25.3DEG
 Operators:DAMIN
 Test Date:2022-06-10

γ Range: 0 - 180DEG
 γ Interval: 1.0DEG
 Test System:EVERFINE GO-3000H_V1 SYSTEM V2.00.411
 Humidity:65.0%
 Test Distance:9.000m [K=1.0000]
 Remarks:

UGR(Unified Glare Rating) Table

Test:U:11.892V I:0.3678A P:3.1827W PF:0.7277 Freq:60.00Hz Lamp Flux:349.895x1 lm										
NAME: 487199-GY6.35-4W-2700K					TYPE:			WEIGHT:		
SPEC.:					DIM.:			SERIAL No.:		
MFR.:					SUR.:			Shielding Angle:		
ceiling/cavity	0.7	0.7	0.5	0.5	0.3	0.7	0.7	0.5	0.5	0.3
walls	0.5	0.3	0.5	0.3	0.3	0.5	0.3	0.5	0.3	0.3
working plane	0.2	0.2	0.2	0.2	0.2	0.2	0.2	0.2	0.2	0.2
Room dimensions	Viewed crosswise					Viewed endwise				
x = 2H y = 2H	25.3	26.6	26.1	27.4	28.3	25.8	27.0	26.5	27.8	28.8
3H	28.6	29.7	29.4	30.5	31.5	29.3	30.4	30.1	31.2	32.2
4H	30.5	31.6	31.3	32.4	33.4	31.3	32.4	32.0	33.2	34.2
6H	32.6	33.6	33.4	34.5	35.5	33.4	34.5	34.2	35.3	36.3
8H	33.8	34.8	34.6	35.6	36.7	34.6	35.6	35.4	36.5	37.5
12H	35.1	36.1	36.0	37.0	38.0	36.0	37.0	36.8	37.8	38.9
4H 2H	26.3	27.4	27.1	28.2	29.2	26.6	27.7	27.4	28.5	29.5
3H	29.7	30.6	30.5	31.5	32.5	30.3	31.2	31.1	32.1	33.1
4H	31.7	32.6	32.5	33.4	34.5	32.4	33.3	33.2	34.1	35.2
6H	33.9	34.7	34.8	35.6	36.7	34.7	35.5	35.6	36.4	37.5
8H	35.2	35.9	36.1	36.8	38.0	36.0	36.8	36.9	37.7	38.8
12H	36.7	37.4	37.6	38.3	39.4	37.5	38.2	38.4	39.1	40.2
8H 4H	32.4	33.1	33.2	34.0	35.1	32.9	33.7	33.8	34.6	35.7
6H	34.9	35.5	35.7	36.4	37.6	35.6	36.2	36.4	37.1	38.2
8H	36.3	36.9	37.2	37.8	39.0	37.1	37.6	38.0	38.6	39.7
12H	38.0	38.5	38.9	39.4	40.6	38.8	39.3	39.7	40.2	41.4
12H 4H	32.6	33.3	33.5	34.2	35.3	33.1	33.8	34.0	34.7	35.8
6H	35.2	35.8	36.1	36.7	37.8	35.8	36.4	36.7	37.3	38.5
8H	36.7	37.2	37.6	38.2	39.3	37.4	37.9	38.3	38.8	40.0
Variations with the observer position at spacings:										
S = 1.0H	+ 0.1 / - 0.1					+ 0.1 / - 0.1				
1.5H	+ 0.2 / - 0.3					+ 0.2 / - 0.3				
2.0H	+ 0.3 / - 0.4					+ 0.3 / - 0.4				

CIE Pub.117, 349.9 lm Total Lamp Luminous Flux Corrected (8log(F/F0) = -3.6)
 Area: 0.001 m2

C Range: 0 - 360DEG
 C Interval: 22.5DEG
 Test Speed: HIGH
 Temperature:25.3DEG
 Operators:DAMIN
 Test Date:2022-06-10

γ Range: 0 - 180DEG
 γ Interval: 1.0DEG
 Test System:EVERFINE GO-3000H_V1 SYSTEM V2.00.411
 Humidity:65.0%
 Test Distance:9.000m [K=1.0000]
 Remarks:

UTILIZATION FACTORS TABLE

Test:U:11.892V I:0.3678A P:3.1827W PF:0.7277 Freq:60.00Hz Lamp Flux:349.895x1 lm		
NAME: 487199-GY6.35-4W-2700K	TYPE:	WEIGHT:
SPEC.:	DIM.:	SERIAL No.:
MFR.:	SUR.:	Shielding Angle:

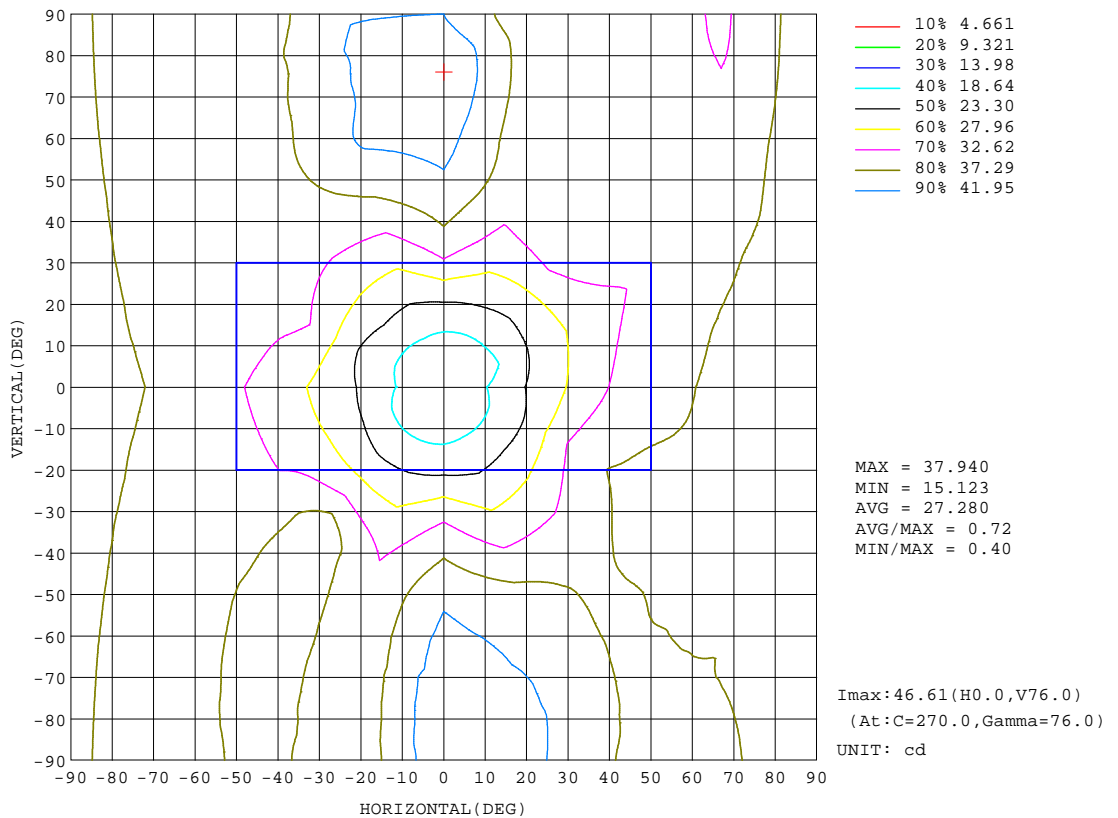
REFLECTANCE										
Ceiling	0.8	0.8	0.8	0.7	0.7	0.7	0.5	0.5	0.5	0
Walls	0.7	0.5	0.3	0.7	0.5	0.3	0.7	0.5	0.3	0
Working plane	0.2	0.2	0.2	0.2	0.2	0.2	0.2	0.2	0.2	0
ROOM INDEX	UTILIZATION FACTORS(PERCENT) k(RI) x RCR = 5									
k = 0.60	37	23	16	35	23	15	33	21	15	8
0.80	45	31	22	43	30	21	39	28	20	11
1.00	52	38	28	50	36	27	45	36	25	15
1.25	59	44	34	56	43	33	50	39	31	19
1.50	65	50	40	61	48	38	54	43	35	22
2.00	73	59	49	68	56	47	60	50	42	27
2.50	78	65	55	73	62	53	64	55	48	30
3.00	82	70	61	77	66	58	67	59	52	34
4.00	87	77	69	82	73	65	72	64	58	38
5.00	91	82	74	85	77	70	74	68	63	41
ROOM INDEX	UF(total)									Direct
According to DIN EN 13032-2 2004			Suspended				SHRNOM = 1.25			

C Range: 0 - 360DEG
 C Interval: 22.5DEG
 Test Speed: HIGH
 Temperature:25.3DEG
 Operators:DAMIN
 Test Date:2022-06-10

γ Range: 0 - 180DEG
 γ Interval: 1.0DEG
 Test System:EVERFINE GO-3000H_V1 SYSTEM V2.00.411
 Humidity:65.0%
 Test Distance:9.000m [K=1.0000]
 Remarks:

ISOCANDELA DIAGRAM

Test:U:11.892V I:0.3678A P:3.1827W PF:0.7277 Freq:60.00Hz Lamp Flux:349.895x1 lm		
NAME: 487199-GY6.35-4W-2700K	TYPE:	WEIGHT:
SPEC.:	DIM.:	SERIAL No.:
MFR.:	SUR.:	Shielding Angle:



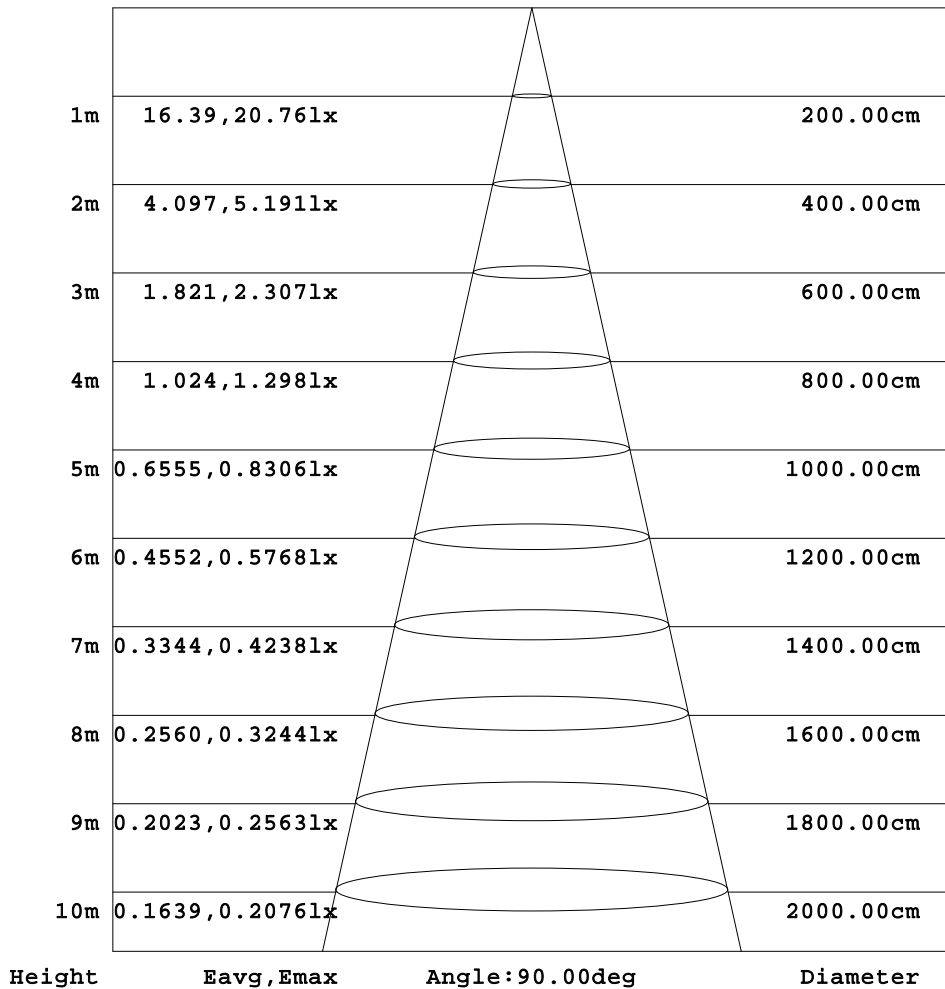
C Range: 0 - 360DEG
 C Interval: 22.5DEG
 Test Speed: HIGH
 Temperature: 25.3DEG
 Operators: DAMIN
 Test Date: 2022-06-10

γ Range: 0 - 180DEG
 γ Interval: 1.0DEG
 Test System: EVERFINE GO-3000H_V1 SYSTEM V2.00.411
 Humidity: 65.0%
 Test Distance: 9.000m [K=1.0000]
 Remarks:

AAI Figure

Test:U:11.892V I:0.3678A P:3.1827W PF:0.7277 Freq:60.00Hz Lamp Flux:349.895x1 lm		
NAME: 487199-GY6.35-4W-2700K	TYPE:	WEIGHT:
SPEC.:	DIM.:	SERIAL No.:
MFR.:	SUR.:	Shielding Angle:

Flux out:51.48 lm



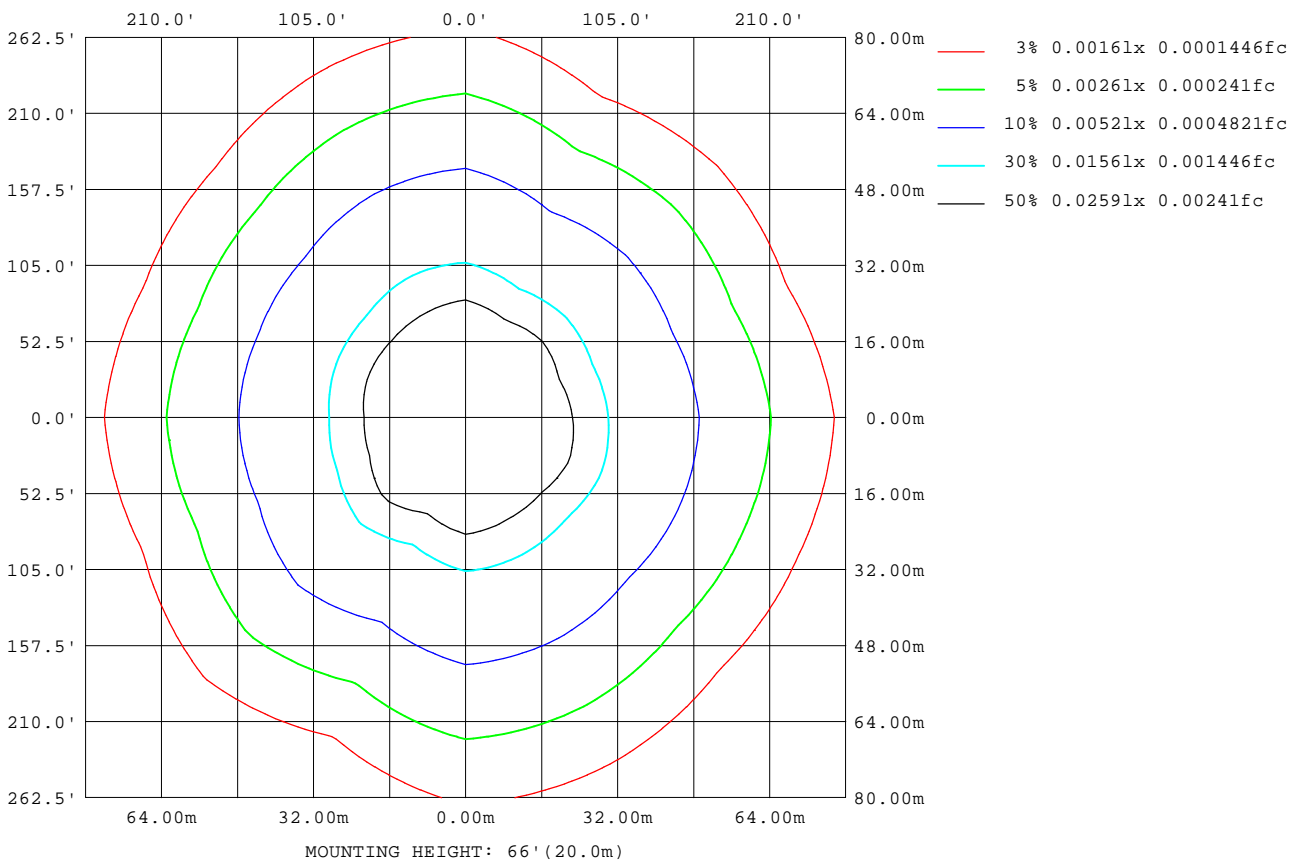
Note:The Curves indicate the illuminated area and the average illumination when the luminaire is at different distance.

C Range: 0 - 360DEG
 C Interval: 22.5DEG
 Test Speed: HIGH
 Temperature:25.3DEG
 Operators:DAMIN
 Test Date:2022-06-10

γ Range: 0 - 180DEG
 γ Interval: 1.0DEG
 Test System:EVERFINE GO-3000H_V1 SYSTEM V2.00.411
 Humidity:65.0%
 Test Distance:9.000m [K=1.0000]
 Remarks:

ISOLUX DIAGRAM

Test:U:11.892V I:0.3678A P:3.1827W PF:0.7277 Freq:60.00Hz Lamp Flux:349.895x1 lm		
NAME: 487199-GY6.35-4W-2700K	TYPE:	WEIGHT:
SPEC.:	DIM.:	SERIAL No.:
MFR.:	SUR.:	Shielding Angle:



C Range: 0 - 360DEG
 C Interval: 22.5DEG
 Test Speed: HIGH
 Temperature: 25.3DEG
 Operators: DAMIN
 Test Date: 2022-06-10

γ Range: 0 - 180DEG
 γ Interval: 1.0DEG
 Test System: EVERFINE GO-3000H_V1 SYSTEM V2.00.411
 Humidity: 65.0%
 Test Distance: 9.000m [K=1.0000]
 Remarks:

LED Avg.L Report

Test:U:11.892V I:0.3678A P:3.1827W PF:0.7277 Freq:60.00Hz Lamp Flux:349.895x1 lm		
NAME: 487199-GY6.35-4W-2700K	TYPE:	WEIGHT:
SPEC.:	DIM.:	SERIAL No.:
MFR.:	SUR.:	Shielding Angle:

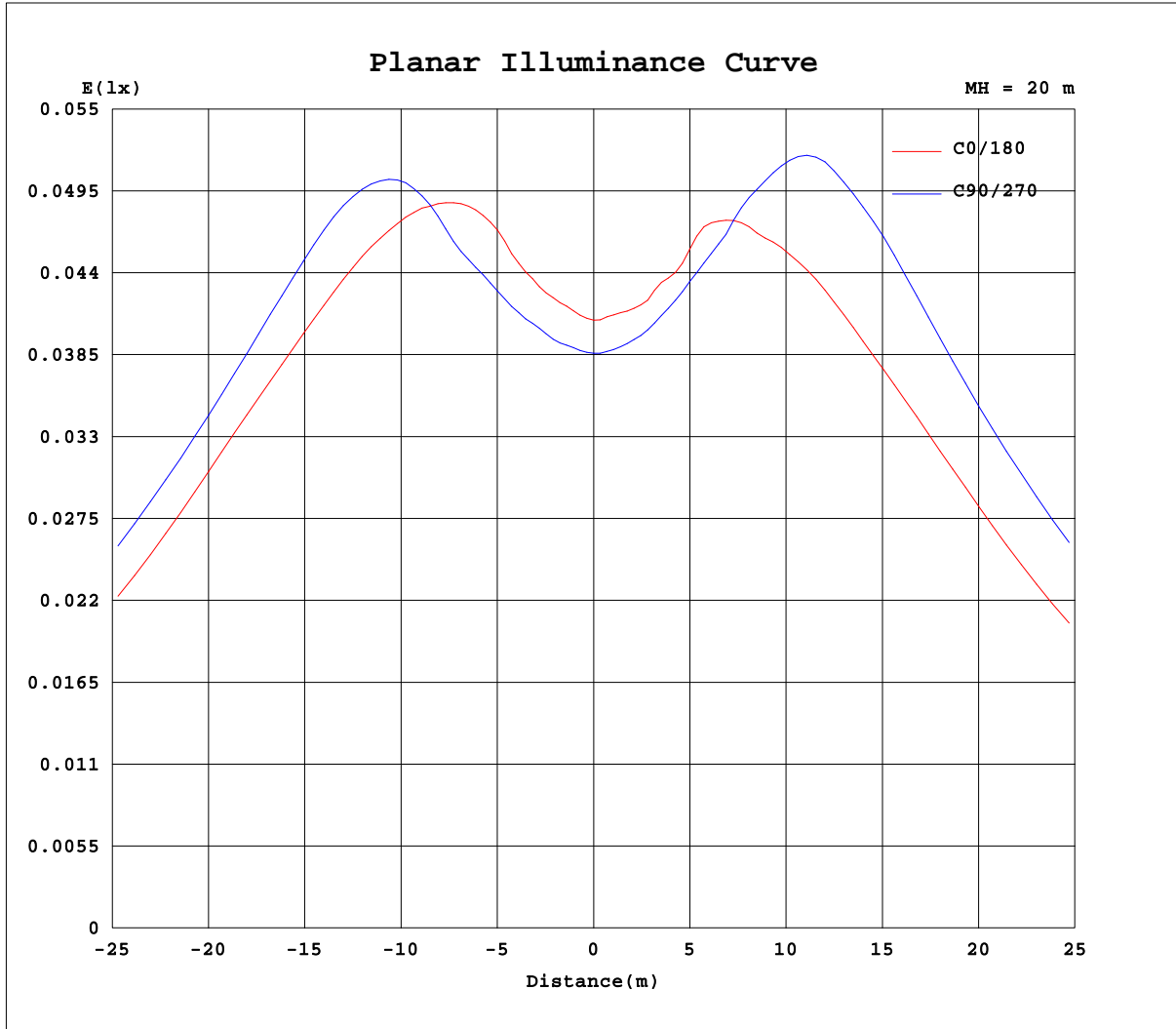
AvgL	cd/m2
L_0~180(65)av	83036
L_0~180(75)av	143261
L_0~180(85)av	436636
L_90~270(65)av	106222
L_90~270(75)av	179942
L_90~270(85)av	520394
L_45(65)av	89093
L_45(75)av	144878
L_45(85)av	427742

Standard: GB/T 29293-2012

C Range: 0 - 360DEG
 C Interval: 22.5DEG
 Test Speed: HIGH
 Temperature:25.3DEG
 Operators:DAMIN
 Test Date:2022-06-10

γ Range: 0 - 180DEG
 γ Interval: 1.0DEG
 Test System:EVERFINE GO-3000H_V1 SYSTEM V2.00.411
 Humidity:65.0%
 Test Distance:9.000m [K=1.0000]
 Remarks:

Planar Illuminance Curve



C Range: 0 - 360DEG
C Interval: 22.5DEG
Test Speed: HIGH
Temperature: 25.3DEG
Operators: DAMIN
Test Date: 2022-06-10

γ Range: 0 - 180DEG
 γ Interval: 1.0DEG
Test System: EVERFINE GO-3000H_V1 SYSTEM V2.00.411
Humidity: 65.0%
Test Distance: 9.000m [K=1.0000]
Remarks:

LUMINOUS DISTRIBUTION INTENSITY DATA

Test:U:11.892V I:0.3678A P:3.1827W PF:0.7277 Freq:60.00Hz Lamp Flux:349.895x1 lm		
NAME: 487199-GY6.35-4W-2700K	TYPE:	WEIGHT:
SPEC.:	DIM.:	SERIAL No.:
MFR.:	SUR.:	Shielding Angle:

Table--1

UNIT: cd

C(DEG) γ (DEG)	0	22.5	45	67.5	90	112.5	135	157.5	180	202.5	225	247.5	270	292.5	315	337.5			
0	15.6	15.6	15.6	15.6	15.6	15.6	15.6	15.6	15.6	15.6	15.6	15.6	15.6	15.6	15.6	15.6			
5	16.2	16.2	16.1	16.1	16.0	16.1	16.1	16.1	16.0	16.1	16.1	16.1	16.0	16.0	16.0	16.0			
10	17.6	17.5	17.5	17.4	17.3	17.2	17.4	17.5	17.3	17.2	17.4	17.5	17.4	17.3	17.3	17.3			
15	20.1	19.4	19.7	19.7	19.4	19.6	19.7	20.0	19.7	19.0	19.6	19.9	19.7	19.8	19.8	19.5			
20	22.4	22.2	22.5	22.2	22.4	22.4	22.4	23.3	21.9	21.3	22.6	22.5	23.1	23.0	22.4	22.7			
25	24.7	25.8	25.3	24.6	26.9	25.4	25.5	26.6	23.6	24.5	25.5	25.0	27.5	26.0	25.2	25.7			
30	26.9	29.9	27.9	27.1	31.1	28.1	29.2	28.8	25.6	28.5	27.8	27.7	32.2	28.7	28.4	27.9			
35	29.1	33.5	30.2	29.6	34.4	30.2	33.7	30.8	27.4	31.7	30.1	30.5	35.6	30.9	31.9	29.8			
40	31.2	35.5	32.4	32.1	37.0	32.0	38.4	32.6	29.2	32.8	32.2	33.0	38.1	32.8	35.2	31.4			
45	33.1	36.6	34.2	34.8	39.3	33.4	41.3	34.0	30.6	33.4	34.0	35.8	40.0	34.3	36.9	32.8			
50	34.1	37.4	35.3	37.6	41.3	34.2	41.2	34.9	31.3	34.0	35.0	38.1	41.7	35.3	37.0	33.9			
55	34.7	37.8	36.0	39.2	42.5	34.5	41.3	35.5	31.8	34.2	35.6	40.2	43.0	35.4	37.0	34.8			
60	35.4	37.5	36.2	40.1	43.6	34.5	41.3	35.7	32.5	34.0	35.7	42.2	44.1	35.1	37.1	35.6			
65	36.5	37.0	36.2	41.0	44.5	34.3	41.4	36.0	33.7	33.8	35.7	42.5	45.3	34.9	37.3	35.8			
70	37.3	36.9	36.4	41.6	45.9	34.1	41.2	35.8	35.1	33.4	35.4	42.1	46.3	34.9	37.4	35.4			
75	38.1	36.6	36.4	42.1	46.1	34.0	41.2	35.5	36.0	33.0	35.2	42.2	47.0	34.7	37.2	34.8			
80	38.6	36.3	36.4	42.7	46.4	33.8	41.1	34.9	36.7	32.7	34.9	42.2	46.8	34.7	37.3	33.8			
85	39.0	36.0	36.3	42.7	46.5	33.8	41.3	34.2	37.1	32.2	34.7	42.3	44.2	34.9	36.8	33.6			
90	38.8	35.5	35.9	42.6	46.1	33.7	40.8	33.8	36.9	31.9	34.4	41.8	42.3	34.0	36.5	32.9			
95	38.3	35.3	35.7	42.3	45.8	33.6	40.9	33.6	36.4	31.6	34.4	41.7	40.5	33.9	36.1	33.6			
100	37.2	35.0	35.4	41.5	45.0	33.2	40.6	33.4	35.2	31.2	33.9	41.1	5.86	33.4	35.6	33.6			
105	35.6	34.1	34.5	40.4	43.3	32.4	39.6	32.9	33.5	30.5	32.8	40.1	0.22	32.1	34.9	33.0			
110	33.5	32.9	33.5	38.8	0.58	31.2	38.3	32.1	31.2	29.6	31.6	38.9	0.19	30.8	33.7	31.9			
115	31.1	31.4	32.2	36.8	0.24	30.0	37.2	30.6	28.6	26.0	30.2	37.4	0.18	29.5	32.4	30.6			
120	28.4	25.4	30.5	34.4	0.22	28.2	35.8	23.8	26.1	9.86	28.2	35.4	0.17	26.3	30.6	28.4			
125	26.0	7.86	28.4	31.2	0.21	26.3	34.8	6.94	23.7	0.41	26.1	30.3	0.17	13.9	28.7	22.1			
130	23.8	0.39	25.9	27.0	0.21	24.3	32.0	0.39	21.7	0.28	22.9	16.4	0.18	1.90	26.7	7.33			
135	21.2	0.30	22.3	22.8	0.20	21.9	26.2	0.32	19.3	0.31	8.87	2.53	0.17	0.25	24.5	0.39			
140	18.0	0.28	12.6	19.4	0.19	19.3	13.6	0.30	16.6	0.32	0.98	0.19	0.16	0.18	17.4	0.45			
145	14.8	0.26	1.70	15.3	0.17	8.49	3.15	0.27	13.5	0.47	0.26	0.17	0.16	0.17	4.20	0.48			
150	11.6	0.31	0.22	5.17	0.16	6.44	0.19	0.24	10.4	2.85	0.19	0.16	0.14	0.15	0.19	0.44			
155	8.53	2.68	0.19	0.19	0.15	0.18	0.17	0.34	7.69	3.82	0.17	0.15	0.13	0.13	0.18	0.54			
160	4.61	2.54	0.16	0.15	0.14	0.14	0.14	1.81	4.23	3.08	0.15	0.13	0.13	0.13	0.18	2.35			
165	0.67	0.90	0.14	0.13	0.13	0.13	0.13	0.13	0.20	0.14	0.13	0.13	0.12	0.13	0.13	1.38			
170	0.12	0.12	0.12	0.12	0.12	0.12	0.12	0.12	0.12	0.11	0.12	0.12	0.12	0.12	0.11	0.11			
175	0.12	0.12	0.12	0.12	0.12	0.12	0.11	0.12	0.12	0.11	0.12	0.12	0.12	0.12	0.11	0.11			
180	0.12	0.12	0.12	0.11	0.11	0.11	0.11	0.11	0.12	0.11	0.12	0.12	0.12	0.12	0.11	0.11			

C Range: 0 - 360DEG
 C Interval: 22.5DEG
 Test Speed: HIGH
 Temperature:25.3DEG
 Operators:DAMIN
 Test Date:2022-06-10

γ Range: 0 - 180DEG
 γ Interval: 1.0DEG
 Test System:EVERFINE GO-3000H_V1 SYSTEM V2.00.411
 Humidity:65.0%
 Test Distance:9.000m [K=1.0000]
 Remarks: