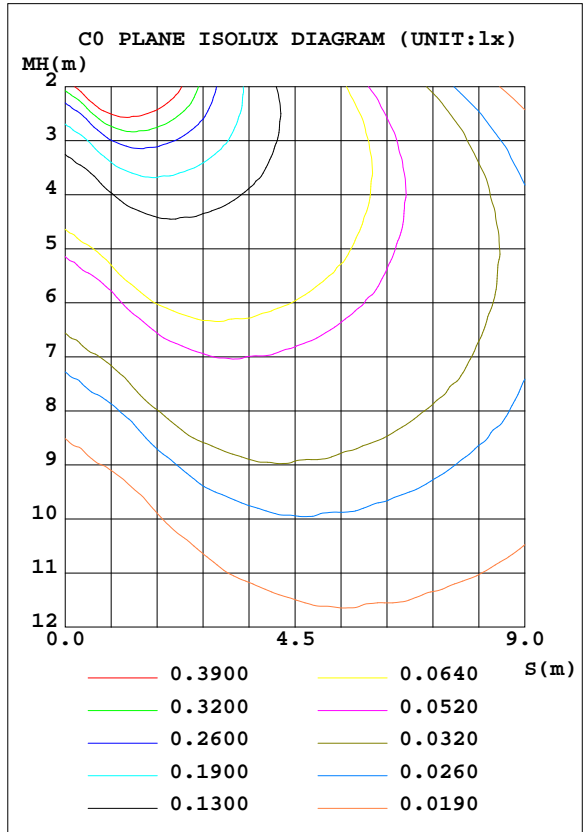
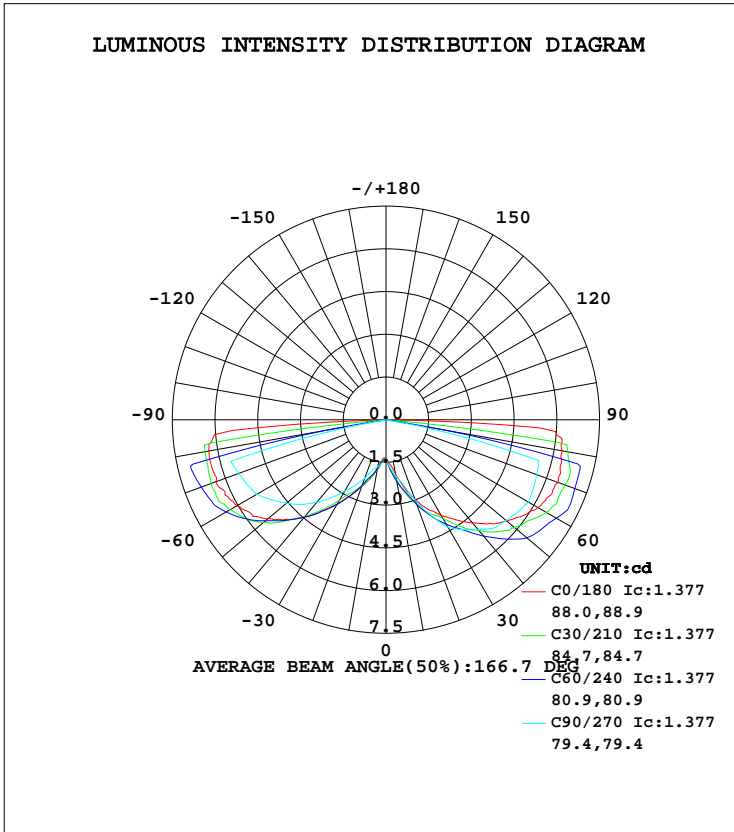


**LUMINAIRE PHOTOMETRIC TEST REPORT**

Test:U:11.97V I:0.1634A P:1.285W PF:0.6568 Lamp Flux:235x1 lm		
NAME: 490924 ST14-12V-2W	TYPE:490924 ST14-12V-2W	WEIGHT:
SPEC.:	DIM.:	SERIAL No.:
MFR.:	SUR.:	PROTECTION ANGLE:

DATA OF LAMP		PHOTOMETRIC DATA Eff: 51.81 lm/W			
MODEL	490924 ST14-12V-2W	I <sub>max</sub> (cd)	7.364	S/MH(C0/180)	3.47
NOMINAL POWER(W)	1	LOR(%)	28.3	S/MH(C90/270)	3.25
RATED VOLTAGE(V)	12	TOTAL FLUX(lm)	28.330	η UP, DN(C0-180)	0.0,14.4
NOMINAL FLUX(lm)	100	CIE CLASS	DIRECT	η UP, DN(C180-360)	0.0,14.0
LAMPS INSIDE	1	η up(%)	0.0	CIBSE SHR NOM	2.00
TEST VOLTAGE(V)	12	η down(%)	28.3	CIBSE SHR MAX	0.00



C Range: 0 - 360DEG  
 C Interval: 5.0DEG  
 Test Speed: HIGH  
 Temperature:20DEG  
 Operators:Y  
 Test Date:2024-04-25

γ Range: 0 - 90DEG  
 γ Interval: 0.5DEG  
 Test System:EVERFINE GO-2000B\_V1 SYSTEM V2.0.291  
 Humidity:65.0%  
 Test Distance:8.750m [K=1.0000]  
 Remarks:

**ZONAL FLUX DIAGRAM**

ZONAL FLUX DIAGRAM:

γ	C0	C45	C90	C135	C180	C225	C270	C315	γ	Φ zone	Φ total	%lum, lamp
5	1.567	1.763	1.695	1.523	1.392	1.474	1.525	1.604	0- 5	0.0358	0.0358	0.13,0.04
10	1.918	2.180	2.013	1.767	1.692	1.799	1.673	1.915	5- 10	0.1242	0.1600	0.56,0.16
15	2.453	2.691	2.331	2.115	2.087	2.089	1.821	2.363	10- 15	0.2470	0.4070	1.44,0.41
20	2.969	3.169	3.011	2.639	2.496	2.367	2.178	2.769	15- 20	0.4112	0.8182	2.89,0.82
25	3.462	3.667	3.691	3.077	2.922	2.855	2.535	3.318	20- 25	0.6180	1.436	5.07,1.44
30	3.884	4.179	4.370	3.606	3.420	3.358	2.893	3.947	25- 30	0.8622	2.298	8.11,2.3
35	4.291	4.652	4.705	4.266	3.899	3.863	3.332	4.527	30- 35	1.144	3.442	12.1,3.44
40	4.725	5.138	5.040	4.814	4.457	4.448	3.772	5.019	35- 40	1.456	4.898	17.3,4.9
45	5.146	5.699	5.374	5.358	4.943	4.992	4.212	5.575	40- 45	1.792	6.690	23.6,6.69
50	5.518	6.049	5.509	5.889	5.395	5.493	4.556	6.142	45- 50	2.139	8.829	31.2,8.83
55	5.879	6.444	5.644	6.339	5.764	6.049	4.900	6.566	50- 55	2.463	11.29	39.9,11.3
60	6.162	6.648	5.779	6.673	6.045	6.478	5.244	6.717	55- 60	2.757	14.05	49.6,14
65	6.341	6.773	5.707	6.907	6.237	6.773	5.376	7.023	60- 65	3.010	17.06	60.2,17.1
70	6.434	6.858	5.636	6.990	6.355	6.965	5.507	7.142	65- 70	3.198	20.26	71.5,20.3
75	6.333	6.802	5.565	6.993	6.345	6.909	5.639	7.068	70- 75	3.326	23.58	83.2,23.6
80	6.282	5.394	0	5.591	6.324	5.433	0	5.629	75- 80	2.917	26.50	93.5,26.5
85	5.997	0	0	0	6.047	0	0	0	80- 85	1.463	27.96	98.7,28
90	0	0	0	0	0	0	0	0	85- 90	0.3674	28.33	100,28.3
95									90- 95			
100									95-100			
105									100-105			
110									105-110			
115									110-115			
120									115-120			
125									120-125			
130									125-130			
135									130-135			
140									135-140			
145									140-145			
150									145-150			
155									150-155			
160									155-160			
165									160-165			
170									165-170			
175									170-175			
180									175-180			
DEG	LUMINOUS INTENSITY:cd								UNIT:lm			

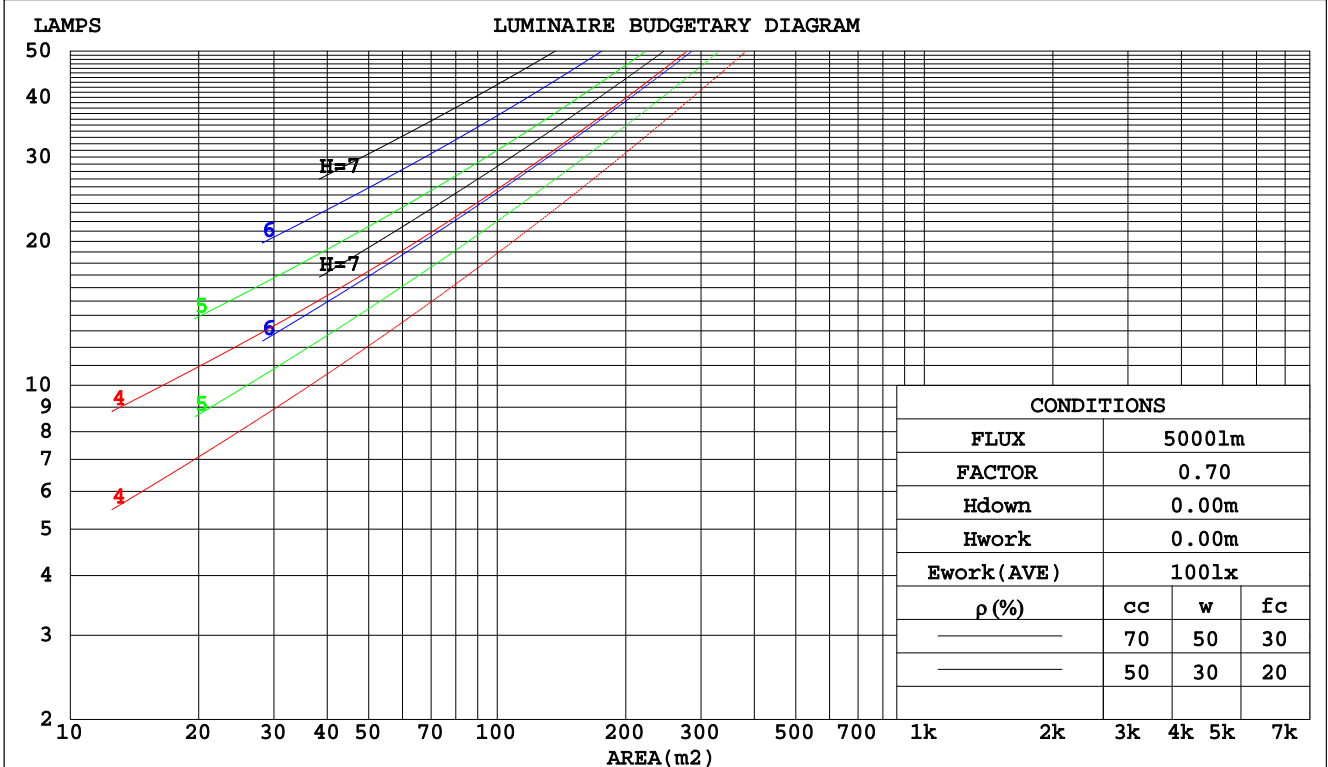
C Range: 0 - 360DEG  
 C Interval: 5.0DEG  
 Test Speed: HIGH  
 Temperature:20DEG  
 Operators:Y  
 Test Date:2024-04-25

γ Range: 0 - 90DEG  
 γ Interval: 0.5DEG  
 Test System:EVERFINE GO-2000B\_V1 SYSTEM V2.0.291  
 Humidity:65.0%  
 Test Distance:8.750m [K=1.0000]  
 Remarks:

**CU AND LUMINAIRE BUDGETARY ESTIMATE DIAGRAM**

Test:U:11.97V I:0.1634A P:1.285W PF:0.6568 Lamp Flux:235x1 lm		
NAME: 490924 ST14-12V-2W	TYPE:490924 ST14-12V-2W	WEIGHT:
SPEC.:	DIM.:	SERIAL No.:
MFR.:	SUR.:	PROTECTION ANGLE:

pcc	80%			70%			50%			30%			10%			0
	50%	30%	10%	50%	30%	10%	50%	30%	10%	50%	30%	10%	50%	30%	10%	0
pw	50%	30%	10%	50%	30%	10%	50%	30%	10%	50%	30%	10%	50%	30%	10%	0
pfc	20%			20%			20%			20%			20%			0
RCR	RCR:Room Cavity Ratio						Coefficients of Utilization(CU)									
0.0	.34	.34	.34	.33	.33	.33	.31	.31	.31	.30	.30	.30	.29	.29	.29	.28
1.0	.27	.25	.24	.26	.25	.23	.25	.24	.22	.24	.23	.22	.23	.22	.21	.20
2.0	.22	.19	.17	.21	.19	.17	.20	.18	.16	.19	.17	.16	.18	.17	.15	.15
3.0	.18	.15	.13	.18	.15	.13	.17	.14	.12	.16	.14	.12	.15	.13	.12	.11
4.0	.16	.12	.10	.15	.12	.10	.14	.12	.10	.14	.11	.09	.13	.11	.09	.08
5.0	.13	.10	.08	.13	.10	.08	.12	.10	.08	.12	.09	.08	.11	.09	.07	.07
6.0	.12	.09	.06	.11	.09	.06	.11	.08	.06	.10	.08	.06	.10	.08	.06	.05
7.0	.10	.07	.05	.10	.07	.05	.10	.07	.05	.09	.07	.05	.09	.07	.05	.04
8.0	.09	.06	.05	.09	.06	.05	.09	.06	.04	.08	.06	.04	.08	.06	.04	.04
9.0	.08	.06	.04	.08	.06	.04	.08	.06	.04	.08	.05	.04	.07	.05	.04	.03
10.0	.08	.05	.03	.08	.05	.03	.07	.05	.03	.07	.05	.03	.07	.05	.03	.03



C Range: 0 - 360DEG  
 C Interval: 5.0DEG  
 Test Speed: HIGH  
 Temperature:20DEG  
 Operators:Y  
 Test Date:2024-04-25

γ Range: 0 - 90DEG  
 γ Interval: 0.5DEG  
 Test System:EVERFINE GO-2000B\_V1 SYSTEM V2.0.291  
 Humidity:65.0%  
 Test Distance:8.750m [K=1.0000]  
 Remarks:

**WEC AND CCEC**

Test:U:11.97V I:0.1634A P:1.285W PF:0.6568 Lamp Flux:235x1 lm		
NAME: 490924 ST14-12V-2W	TYPE:490924 ST14-12V-2W	WEIGHT:
SPEC.:	DIM.:	SERIAL No.:
MFR.:	SUR.:	PROTECTION ANGLE:

ρcc	80%			70%			50%			30%			10%			0
ρw	50%	30%	10%	50%	30%	10%	50%	30%	10%	50%	30%	10%	50%	30%	10%	0
ρfc	20%			20%			20%			20%			20%			0
RCR	RCR:Room Cavity Ratio						Wall Exitance Coefficients(WEC)									
0.0																
1.0	.133	.075	.024	.130	.074	.024	.126	.073	.023	.123	.071	.023	.119	.069	.022	
2.0	.117	.064	.020	.115	.063	.020	.112	.062	.019	.108	.061	.019	.105	.059	.019	
3.0	.103	.055	.016	.102	.054	.016	.098	.053	.016	.095	.052	.016	.092	.051	.016	
4.0	.092	.048	.014	.090	.047	.014	.087	.046	.014	.084	.045	.014	.082	.045	.014	
5.0	.082	.042	.012	.081	.041	.012	.078	.041	.012	.076	.040	.012	.073	.039	.012	
6.0	.074	.037	.011	.073	.037	.011	.071	.036	.011	.069	.036	.010	.067	.035	.010	
7.0	.068	.033	.009	.066	.033	.009	.064	.033	.009	.063	.032	.009	.061	.032	.009	
8.0	.062	.030	.009	.061	.030	.008	.059	.030	.008	.058	.029	.008	.056	.029	.008	
9.0	.057	.028	.008	.056	.027	.008	.055	.027	.008	.053	.027	.008	.052	.026	.008	
10.0	.053	.025	.007	.052	.025	.007	.051	.025	.007	.050	.025	.007	.048	.024	.007	

ρcc	80%			70%			50%			30%			10%			0
ρw	50%	30%	10%	50%	30%	10%	50%	30%	10%	50%	30%	10%	50%	30%	10%	0
ρfc	20%			20%			20%			20%			20%			0
RCR	RCR:Room Cavity Ratio						Ceiling Cavity Exitance Coefficients(CCEC)									
0.0	.054	.054	.054	.046	.046	.046	.031	.031	.031	.018	.018	.018	.006	.006	.006	
1.0	.054	.044	.035	.046	.038	.030	.032	.026	.021	.018	.015	.012	.006	.005	.004	
2.0	.053	.037	.024	.046	.032	.020	.031	.022	.014	.018	.013	.008	.006	.004	.003	
3.0	.052	.033	.017	.044	.028	.015	.030	.020	.010	.018	.011	.006	.006	.004	.002	
4.0	.050	.029	.013	.043	.025	.012	.029	.018	.008	.017	.010	.005	.005	.003	.002	
5.0	.047	.026	.011	.041	.023	.009	.028	.016	.007	.016	.009	.004	.005	.003	.001	
6.0	.045	.024	.009	.039	.021	.008	.027	.015	.006	.015	.009	.003	.005	.003	.001	
7.0	.043	.022	.008	.037	.019	.007	.025	.013	.005	.015	.008	.003	.005	.003	.001	
8.0	.040	.021	.007	.035	.018	.006	.024	.013	.004	.014	.007	.003	.005	.002	.001	
9.0	.038	.019	.006	.033	.017	.005	.023	.012	.004	.013	.007	.002	.004	.002	.001	
10.0	.036	.018	.006	.031	.016	.005	.022	.011	.003	.013	.006	.002	.004	.002	.001	

C Range: 0 - 360DEG  
 C Interval: 5.0DEG  
 Test Speed: HIGH  
 Temperature:20DEG  
 Operators:Y  
 Test Date:2024-04-25

γ Range: 0 - 90DEG  
 γ Interval: 0.5DEG  
 Test System:EVERFINE GO-2000B\_V1 SYSTEM V2.0.291  
 Humidity:65.0%  
 Test Distance:8.750m [K=1.0000]  
 Remarks:

**UGR(Unified Glare Rating) Table**

Test:U:11.97V I:0.1634A P:1.285W PF:0.6568 Lamp Flux:235x1 lm										
NAME: 490924 ST14-12V-2W					TYPE:490924 ST14-12V-2W			WEIGHT:		
SPEC.:					DIM.:			SERIAL No.:		
MFR.:					SUR.:			PROTECTION ANGLE:		
ceiling/cavity	0.7	0.7	0.5	0.5	0.3	0.7	0.7	0.5	0.5	0.3
walls	0.5	0.3	0.5	0.3	0.3	0.5	0.3	0.5	0.3	0.3
working plane	0.2	0.2	0.2	0.2	0.2	0.2	0.2	0.2	0.2	0.2
Room dimensions	Viewed crosswise					Viewed endwise				
x = 2H y = 2H	3.6	5.6	3.9	5.8	6.0	4.3	6.2	4.6	6.4	6.7
3H	7.1	8.9	7.5	9.2	9.5	7.6	9.4	7.9	9.7	9.9
4H	9.0	10.8	9.4	11.1	11.3	9.4	11.1	9.7	11.4	11.7
6H	11.1	12.8	11.5	13.1	13.4	9.7	11.3	10.0	11.6	11.9
8H	12.2	13.8	12.6	14.1	14.5	9.6	11.2	10.0	11.5	11.8
12H	13.5	15.1	13.9	15.4	15.7	9.5	11.1	9.9	11.4	11.8
4H 2H	5.0	6.8	5.4	7.0	7.3	5.4	7.1	5.7	7.4	7.7
3H	8.6	10.1	8.9	10.4	10.8	8.9	10.5	9.3	10.8	11.2
4H	10.6	12.0	10.9	12.3	12.7	10.9	12.4	11.3	12.7	13.1
6H	12.7	14.0	13.2	14.4	14.8	11.3	12.6	11.7	13.0	13.3
8H	13.9	15.2	14.4	15.6	16.0	11.2	12.5	11.7	12.8	13.2
12H	15.3	16.5	15.8	16.9	17.3	11.2	12.3	11.6	12.7	13.1
8H 4H	11.5	12.7	11.9	13.1	13.5	11.7	13.0	12.1	13.3	13.7
6H	13.9	15.0	14.4	15.4	15.8	12.2	13.2	12.6	13.6	14.1
8H	15.3	16.2	15.8	16.7	17.1	12.1	13.1	12.6	13.5	14.0
12H	16.9	17.7	17.4	18.2	18.6	12.1	12.9	12.6	13.4	13.9
12H 4H	11.5	12.6	11.9	13.0	13.4	11.9	13.1	12.4	13.5	13.9
6H	14.0	14.9	14.4	15.3	15.8	12.4	13.4	12.9	13.8	14.3
8H	15.4	16.2	15.9	16.7	17.1	12.4	13.2	12.9	13.7	14.2
Variations with the observer position at spacings:										
S = 1.0H	+ 0.1 / - 0.1					+ 0.2 / - 0.3				
1.5H	+ 0.3 / - 0.3					+ 0.5 / - 0.6				
2.0H	+ 0.3 / - 0.4					+ 0.7 / - 1.2				

CIE Pub.117 Corrected 100.0 lm Total Lamp Luminous Flux. (8log(F/F0) = -8.0)

C Range: 0 - 360DEG  
C Interval: 5.0DEG  
Test Speed: HIGH  
Temperature:20DEG  
Operators:Y  
Test Date:2024-04-25

γ Range: 0 - 90DEG  
γ Interval: 0.5DEG  
Test System:EVERFINE GO-2000B\_V1 SYSTEM V2.0.291  
Humidity:65.0%  
Test Distance:8.750m [K=1.0000]  
Remarks:

**UTILIZATION FACTORS TABLE**

Test:U:11.97V I:0.1634A P:1.285W PF:0.6568 Lamp Flux:235x1 lm		
NAME: 490924 ST14-12V-2W	TYPE:490924 ST14-12V-2W	WEIGHT:
SPEC.:	DIM.:	SERIAL No.:
MFR.:	SUR.:	PROTECTION ANGLE:

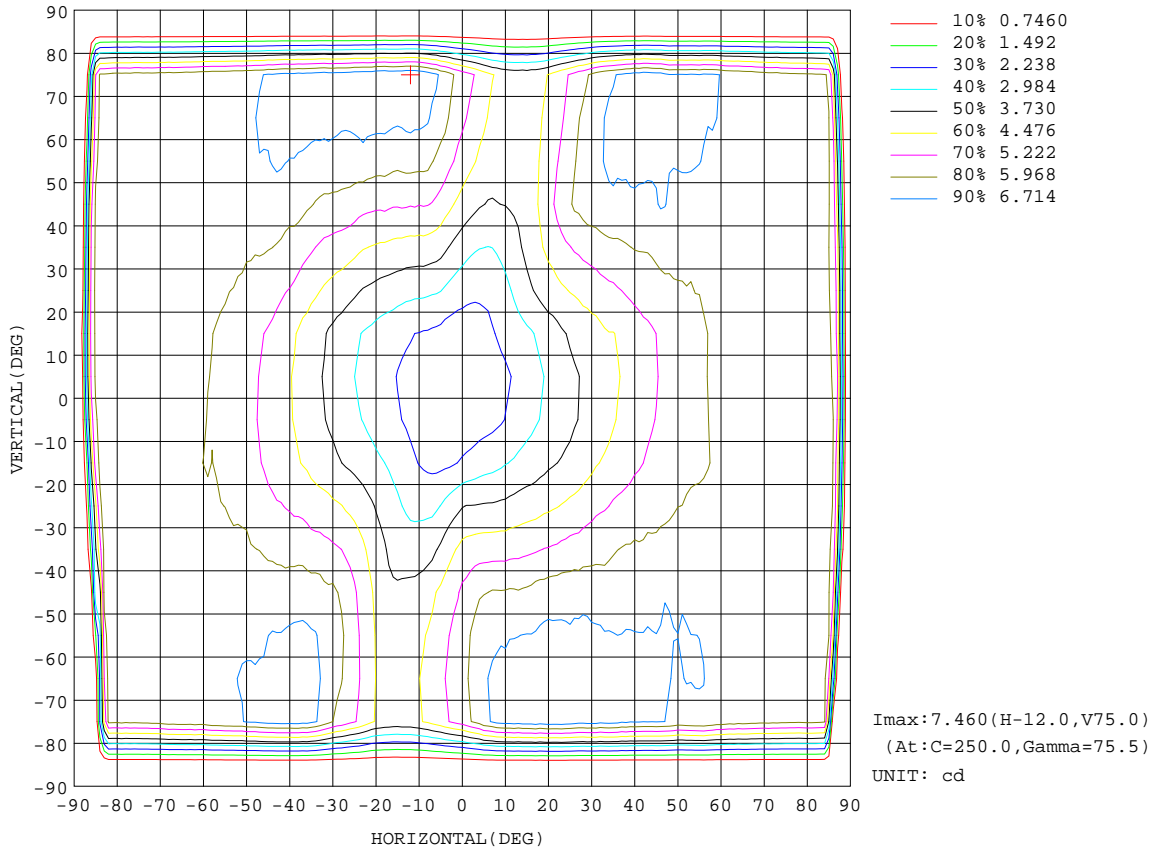
REFLECTANCE										
Ceiling	0.8	0.8	0.8	0.7	0.7	0.7	0.5	0.5	0.5	0
Walls	0.7	0.5	0.3	0.7	0.5	0.3	0.7	0.5	0.3	0
Working plane	0.2	0.2	0.2	0.2	0.2	0.2	0.2	0.2	0.2	0
ROOM INDEX	UTILIZATION FACTORS(PERCENT) k(RI) x RCR = 5									
k = 0.60	12	8	6	12	8	6	12	8	6	3
0.80	15	11	8	14	10	8	14	10	8	5
1.00	17	13	10	17	13	10	16	13	10	7
1.25	19	15	12	19	15	12	18	14	12	9
1.50	21	17	14	20	17	14	19	16	14	11
2.00	23	20	17	23	19	17	22	19	16	14
2.50	25	22	19	24	21	19	23	20	18	15
3.00	26	23	21	26	23	21	24	22	20	17
4.00	28	26	24	27	25	23	26	24	22	19
5.00	29	27	25	28	26	25	27	25	24	21
ROOM INDEX	UF(total)									Direct
According to DIN EN 13032-2 2004			Suspended				SHRNOM = 1.25			

C Range: 0 - 360DEG  
 C Interval: 5.0DEG  
 Test Speed: HIGH  
 Temperature:20DEG  
 Operators:Y  
 Test Date:2024-04-25

γ Range: 0 - 90DEG  
 γ Interval: 0.5DEG  
 Test System:EVERFINE GO-2000B\_V1 SYSTEM V2.0.291  
 Humidity:65.0%  
 Test Distance:8.750m [K=1.0000]  
 Remarks:

**ISOCANDELA DIAGRAM**

Test:U:11.97V I:0.1634A P:1.285W PF:0.6568 Lamp Flux:235x1 lm		
NAME: 490924 ST14-12V-2W	TYPE:490924 ST14-12V-2W	WEIGHT:
SPEC.:	DIM.:	SERIAL No.:
MFR.:	SUR.:	PROTECTION ANGLE:



C Range: 0 - 360DEG  
 C Interval: 5.0DEG  
 Test Speed: HIGH  
 Temperature: 20DEG  
 Operators: Y  
 Test Date: 2024-04-25

γ Range: 0 - 90DEG  
 γ Interval: 0.5DEG  
 Test System: EVERFINE GO-2000B\_V1 SYSTEM V2.0.291  
 Humidity: 65.0%  
 Test Distance: 8.750m [K=1.0000]  
 Remarks:

AAI CURVES

Test:U:11.97V I:0.1634A P:1.285W PF:0.6568 Lamp Flux:235x1 lm		
NAME: 490924 ST14-12V-2W	TYPE:490924 ST14-12V-2W	WEIGHT:
SPEC.:	DIM.:	SERIAL No.:
MFR.:	SUR.:	PROTECTION ANGLE:

	2	4	6	8	10	lx						
	0.1858	0.3716	0.5574	0.7432	0.929	fc						
1	<p><math>\theta = 176.9\text{DEG}</math> <math>\Phi \text{ out} = 28.32 \text{ lm}</math></p>											
3												
5												
7												
9												
m							4	2	0	2	4	
ft							13.1234	6.5617	0.0000	6.5617	13.1234	

Note:The Curves indicate the illuminated area and the average illumination when the luminaire is at different distance.

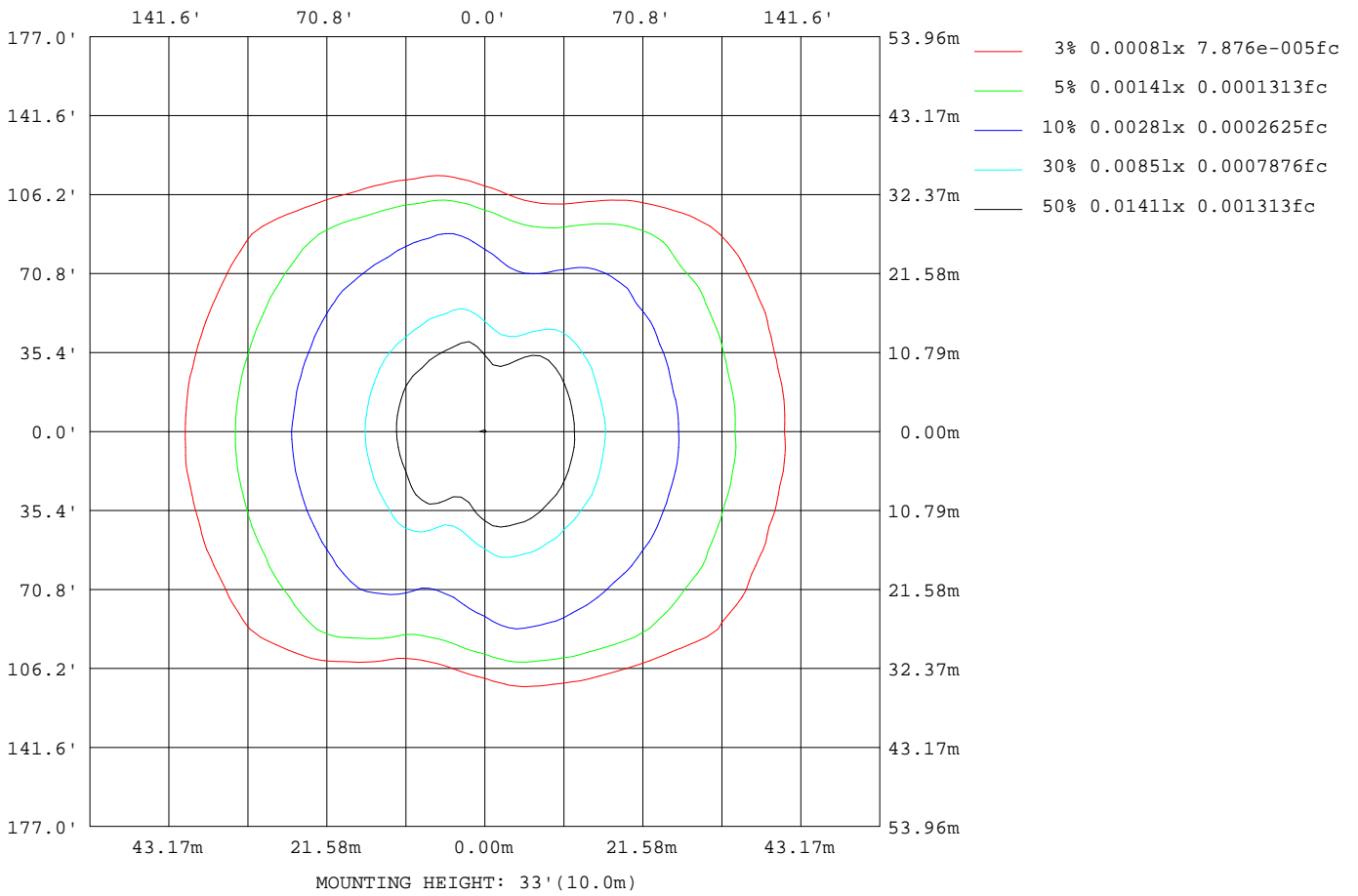
C Range: 0 - 360DEG  
C Interval: 5.0DEG  
Test Speed: HIGH  
Temperature:20DEG  
Operators:Y  
Test Date:2024-04-25

$\gamma$  Range: 0 - 90DEG  
 $\gamma$  Interval: 0.5DEG  
Test System:EVERFINE GO-2000B\_V1 SYSTEM V2.0.291  
Humidity:65.0%  
Test Distance:8.750m [K=1.0000]  
Remarks:



**ISOLUX DIAGRAM**

Test:U:11.97V I:0.1634A P:1.285W PF:0.6568 Lamp Flux:235x1 lm		
NAME: 490924 ST14-12V-2W	TYPE:490924 ST14-12V-2W	WEIGHT:
SPEC.:	DIM.:	SERIAL No.:
MFR.:	SUR.:	PROTECTION ANGLE:



C Range: 0 - 360DEG  
C Interval: 5.0DEG  
Test Speed: HIGH  
Temperature:20DEG  
Operators:Y  
Test Date:2024-04-25

γ Range: 0 - 90DEG  
γ Interval: 0.5DEG  
Test System:EVERFINE GO-2000B\_V1 SYSTEM V2.0.291  
Humidity:65.0%  
Test Distance:8.750m [K=1.0000]  
Remarks:

**LED Avg.L Report**

Test:U:11.97V I:0.1634A P:1.285W PF:0.6568 Lamp Flux:235x1 lm		
NAME: 490924 ST14-12V-2W	TYPE:490924 ST14-12V-2W	WEIGHT:
SPEC.:	DIM.:	SERIAL No.:
MFR.:	SUR.:	PROTECTION ANGLE:

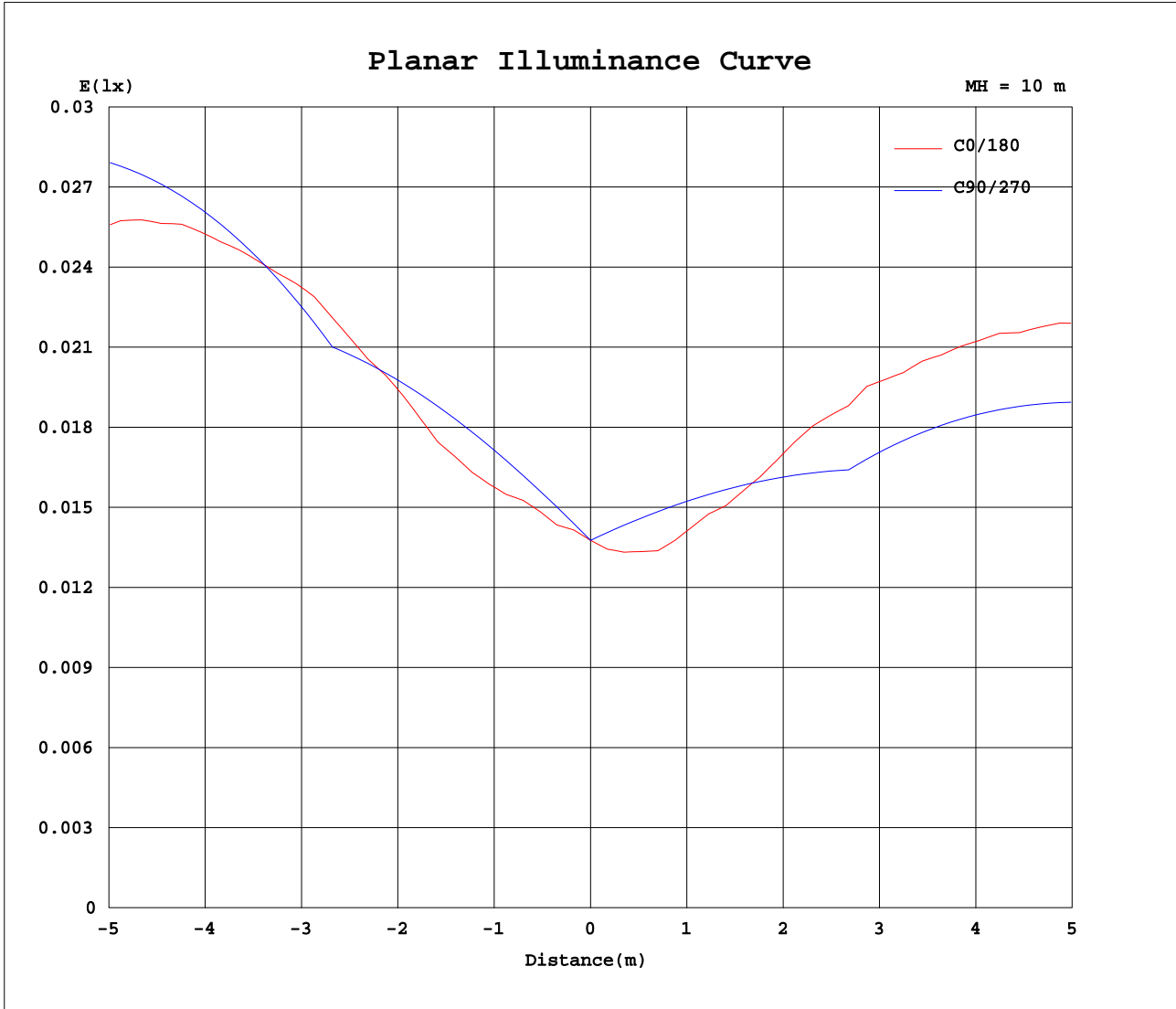
AvgL	cd/m2
L_0~180(65)av	74
L_0~180(75)av	122
L_0~180(85)av	345
L_90~270(65)av	66
L_90~270(75)av	108
L_90~270(85)av	0
L_45(65)av	81
L_45(75)av	134
L_45(85)av	0

Standard: GB/T 29293-2012

C Range: 0 - 360DEG  
C Interval: 5.0DEG  
Test Speed: HIGH  
Temperature:20DEG  
Operators:Y  
Test Date:2024-04-25

γ Range: 0 - 90DEG  
γ Interval: 0.5DEG  
Test System:EVERFINE GO-2000B\_V1 SYSTEM V2.0.291  
Humidity:65.0%  
Test Distance:8.750m [K=1.0000]  
Remarks:

Planar Illuminance Curve



C Range: 0 - 360DEG  
 C Interval: 5.0DEG  
 Test Speed: HIGH  
 Temperature: 20DEG  
 Operators: Y  
 Test Date: 2024-04-25

γ Range: 0 - 90DEG  
 γ Interval: 0.5DEG  
 Test System: EVERFINE GO-2000B\_V1 SYSTEM V2.0.291  
 Humidity: 65.0%  
 Test Distance: 8.750m [K=1.0000]  
 Remarks:

LUMINOUS DISTRIBUTION INTENSITY DATA

Test:U:11.97V I:0.1634A P:1.285W PF:0.6568 Lamp Flux:235x1 lm		
NAME: 490924 ST14-12V-2W	TYPE:490924 ST14-12V-2W	WEIGHT:
SPEC.:	DIM.:	SERIAL No.:
MFR.:	SUR.:	PROTECTION ANGLE:

Table--1

UNIT: cd

C( DEG) γ (DEG)	0	5	10	15	20	25	30	35	40	45	50	55	60	65	70	75	80	85	90
0	1.38	1.38	1.38	1.38	1.38	1.38	1.38	1.38	1.38	1.38	1.38	1.38	1.38	1.38	1.38	1.38	1.38	1.38	1.38
5	1.57	1.60	1.63	1.66	1.68	1.71	1.73	1.74	1.76	1.76	1.77	1.77	1.76	1.75	1.75	1.74	1.73	1.71	1.70
10	1.92	1.97	2.02	2.06	2.09	2.11	2.14	2.16	2.17	2.18	2.19	2.20	2.20	2.19	2.17	2.13	2.09	2.06	2.01
15	2.45	2.52	2.57	2.61	2.65	2.67	2.68	2.69	2.69	2.69	2.67	2.65	2.63	2.62	2.60	2.56	2.48	2.41	2.33
20	2.97	3.04	3.09	3.13	3.15	3.17	3.18	3.16	3.17	3.17	3.17	3.17	3.17	3.15	3.15	3.16	3.13	3.09	3.01
25	3.46	3.52	3.55	3.58	3.61	3.62	3.62	3.62	3.64	3.67	3.69	3.72	3.72	3.70	3.71	3.73	3.74	3.74	3.69
30	3.88	3.95	4.00	4.02	4.01	3.99	4.00	4.08	4.14	4.18	4.21	4.20	4.24	4.24	4.21	4.26	4.32	4.37	4.37
35	4.29	4.37	4.42	4.45	4.48	4.54	4.57	4.60	4.62	4.65	4.66	4.70	4.72	4.77	4.79	4.81	4.85	4.84	4.70
40	4.72	4.81	4.85	4.85	4.87	5.01	5.07	5.15	5.16	5.14	5.23	5.27	5.33	5.33	5.33	5.36	5.40	5.33	5.04
45	5.15	5.23	5.27	5.30	5.37	5.48	5.56	5.65	5.62	5.70	5.75	5.86	5.92	5.95	5.88	5.94	5.98	5.84	5.37
50	5.52	5.58	5.61	5.62	5.69	5.79	5.89	6.00	6.08	6.05	6.24	6.40	6.45	6.42	6.31	6.31	6.28	6.08	5.51
55	5.88	5.86	5.85	5.93	5.99	6.03	6.15	6.23	6.39	6.44	6.49	6.68	6.68	6.77	6.64	6.63	6.57	6.31	5.64
60	6.16	6.09	6.05	6.15	6.21	6.34	6.51	6.56	6.53	6.65	6.68	6.85	6.91	7.03	6.96	6.99	6.90	6.54	5.78
65	6.34	6.32	6.32	6.33	6.39	6.49	6.65	6.72	6.72	6.77	6.82	7.04	7.12	7.13	7.11	7.06	6.96	6.52	5.71
70	6.43	6.49	6.50	6.46	6.48	6.55	6.70	6.75	6.80	6.86	6.83	6.98	7.06	7.12	7.15	7.09	6.98	6.51	5.64
75	6.33	6.47	6.38	6.41	6.45	6.50	6.69	6.73	6.72	6.80	6.83	6.98	7.03	7.11	7.16	7.10	7.01	6.52	5.56
80	6.28	6.36	6.30	6.32	6.30	6.41	6.48	6.64	6.61	5.39	4.01	3.00	2.12	1.44	0.90	0.49	0.21	0.05	0.00
85	6.00	6.21	6.19	6.15	5.36	2.13	0.00	0.00	0.00	0.00	0.00	0.00	0.00	0.00	0.00	0.00	0.00	0.00	0.00
90	0.00	0.00	0.00	0.00	0.00	0.00	0.00	0.00	0.00	0.00	0.00	0.00	0.00	0.00	0.00	0.00	0.00	0.00	0.00

C Range: 0 - 360DEG  
C Interval: 5.0DEG  
Test Speed: HIGH  
Temperature:20DEG  
Operators:Y  
Test Date:2024-04-25

γ Range: 0 - 90DEG  
γ Interval: 0.5DEG  
Test System:EVERFINE GO-2000B\_V1 SYSTEM V2.0.291  
Humidity:65.0%  
Test Distance:8.750m [K=1.0000]  
Remarks:

LUMINOUS DISTRIBUTION INTENSITY DATA

Test:U:11.97V I:0.1634A P:1.285W PF:0.6568 Lamp Flux:235x1 lm		
NAME: 490924 ST14-12V-2W	TYPE:490924 ST14-12V-2W	WEIGHT:
SPEC.:	DIM.:	SERIAL No.:
MFR.:	SUR.:	PROTECTION ANGLE:

Table--2

UNIT: cd

C( DEG) γ (DEG)	95	100	105	110	115	120	125	130	135	140	145	150	155	160	165	170	175	180	185
0	1.38	1.38	1.38	1.38	1.38	1.38	1.38	1.38	1.38	1.38	1.38	1.38	1.38	1.38	1.38	1.38	1.38	1.38	1.38
5	1.67	1.65	1.63	1.61	1.59	1.57	1.55	1.54	1.52	1.51	1.49	1.48	1.47	1.46	1.44	1.43	1.41	1.39	1.41
10	1.95	1.90	1.85	1.82	1.80	1.78	1.77	1.76	1.77	1.77	1.77	1.77	1.77	1.77	1.76	1.74	1.72	1.69	1.72
15	2.22	2.13	2.07	2.02	1.99	1.99	2.02	2.06	2.12	2.17	2.22	2.25	2.26	2.25	2.23	2.19	2.14	2.09	2.12
20	2.83	2.64	2.46	2.35	2.32	2.34	2.42	2.54	2.64	2.69	2.71	2.72	2.72	2.70	2.67	2.62	2.57	2.50	2.52
25	3.41	3.09	2.80	2.69	2.67	2.72	2.86	2.98	3.08	3.13	3.14	3.16	3.16	3.15	3.12	3.07	3.01	2.92	2.94
30	3.98	3.44	3.09	2.98	2.93	3.09	3.28	3.48	3.61	3.69	3.70	3.66	3.61	3.60	3.58	3.55	3.50	3.42	3.43
35	4.26	3.71	3.38	3.23	3.27	3.50	3.84	4.10	4.27	4.28	4.26	4.18	4.10	4.03	4.04	4.02	3.97	3.90	3.93
40	4.54	3.99	3.65	3.53	3.58	3.92	4.34	4.69	4.81	4.81	4.77	4.66	4.60	4.51	4.51	4.52	4.50	4.46	4.49
45	4.84	4.24	3.92	3.80	3.87	4.36	4.87	5.25	5.36	5.32	5.18	5.14	5.04	4.98	4.87	4.94	4.96	4.94	5.00
50	4.96	4.37	4.08	3.95	4.16	4.83	5.52	5.86	5.89	5.79	5.63	5.49	5.42	5.41	5.35	5.35	5.39	5.39	5.43
55	5.09	4.50	4.23	4.11	4.45	5.23	5.97	6.22	6.34	6.22	6.00	5.87	5.83	5.85	5.73	5.67	5.75	5.76	5.79
60	5.22	4.63	4.37	4.27	4.76	5.64	6.29	6.65	6.67	6.45	6.33	6.22	6.14	6.05	6.01	5.96	5.97	6.05	6.02
65	5.14	4.56	4.35	4.33	4.99	5.90	6.56	7.01	6.91	6.72	6.50	6.38	6.32	6.27	6.20	6.14	6.18	6.24	6.14
70	5.06	4.50	4.29	4.35	5.10	5.94	6.65	7.06	6.99	6.76	6.70	6.56	6.51	6.43	6.35	6.36	6.34	6.35	6.26
75	4.97	4.43	4.24	4.39	5.17	5.87	6.74	7.06	6.99	6.79	6.71	6.53	6.50	6.42	6.34	6.36	6.37	6.35	6.33
80	0.04	0.13	0.29	0.55	1.05	1.78	2.92	4.18	5.59	6.81	6.66	6.52	6.44	6.38	6.30	6.34	6.33	6.32	6.32
85	0.00	0.00	0.00	0.00	0.00	0.00	0.00	0.00	0.00	0.00	0.00	0.00	2.17	5.46	6.19	6.21	6.18	6.05	6.16
90	0.00	0.00	0.00	0.00	0.00	0.00	0.00	0.00	0.00	0.00	0.00	0.00	0.00	0.00	0.00	0.00	0.00	0.00	0.00

C Range: 0 - 360DEG  
C Interval: 5.0DEG  
Test Speed: HIGH  
Temperature:20DEG  
Operators:Y  
Test Date:2024-04-25

γ Range: 0 - 90DEG  
γ Interval: 0.5DEG  
Test System:EVERFINE GO-2000B\_V1 SYSTEM V2.0.291  
Humidity:65.0%  
Test Distance:8.750m [K=1.0000]  
Remarks:



**LUMINOUS DISTRIBUTION INTENSITY DATA**

Test:U:11.97V I:0.1634A P:1.285W PF:0.6568 Lamp Flux:235x1 lm		
NAME: 490924 ST14-12V-2W	TYPE:490924 ST14-12V-2W	WEIGHT:
SPEC.:	DIM.:	SERIAL No.:
MFR.:	SUR.:	PROTECTION ANGLE:

Table--4

UNIT: cd

C( DEG) γ (DEG)	285	290	295	300	305	310	315	320	325	330	335	340	345	350	355				
0	1.38	1.38	1.38	1.38	1.38	1.38	1.38	1.38	1.38	1.38	1.38	1.38	1.38	1.38	1.38				
5	1.55	1.56	1.56	1.57	1.59	1.60	1.60	1.61	1.61	1.61	1.61	1.60	1.60	1.59	1.58				
10	1.71	1.74	1.78	1.80	1.83	1.87	1.91	1.94	1.96	1.98	1.98	1.99	1.98	1.97	1.95				
15	1.90	1.96	2.04	2.16	2.25	2.31	2.36	2.42	2.46	2.48	2.49	2.50	2.50	2.50	2.48				
20	2.17	2.27	2.42	2.54	2.65	2.74	2.77	2.82	2.87	2.94	2.98	3.01	3.03	3.03	3.01				
25	2.41	2.58	2.77	2.98	3.14	3.25	3.32	3.36	3.37	3.41	3.48	3.53	3.54	3.53	3.51				
30	2.66	2.90	3.22	3.55	3.78	3.91	3.95	3.98	3.98	3.93	3.92	3.97	3.96	3.95	3.93				
35	3.05	3.32	3.73	4.15	4.44	4.49	4.53	4.52	4.51	4.44	4.33	4.33	4.35	4.34	4.32				
40	3.41	3.66	4.10	4.50	4.83	5.00	5.02	4.99	4.97	4.92	4.79	4.67	4.69	4.73	4.74				
45	3.73	3.93	4.41	4.95	5.41	5.55	5.58	5.53	5.44	5.38	5.30	5.19	5.08	5.14	5.16				
50	3.90	4.14	4.66	5.48	6.04	6.17	6.14	6.00	5.92	5.82	5.67	5.63	5.54	5.51	5.53				
55	4.01	4.31	4.90	5.65	6.27	6.51	6.57	6.42	6.24	6.19	6.04	5.93	5.83	5.77	5.84				
60	4.09	4.41	5.06	5.81	6.50	6.76	6.72	6.64	6.68	6.40	6.22	6.09	6.04	6.06	6.14				
65	4.14	4.44	5.11	6.02	6.69	6.99	7.02	6.79	6.70	6.53	6.39	6.31	6.16	6.24	6.30				
70	4.17	4.45	5.16	6.02	6.67	6.98	7.14	6.80	6.85	6.72	6.57	6.51	6.35	6.37	6.40				
75	4.17	4.44	5.18	5.97	6.63	6.96	7.07	6.80	6.92	6.73	6.63	6.52	6.35	6.39	6.40				
80	0.29	0.56	1.06	1.82	2.84	4.13	5.63	6.76	6.80	6.76	6.60	6.44	6.34	6.34	6.30				
85	0.00	0.00	0.00	0.00	0.00	0.00	0.00	0.00	0.00	0.00	2.21	5.50	6.21	6.21	6.19				
90	0.00	0.00	0.00	0.00	0.00	0.00	0.00	0.00	0.00	0.00	0.00	0.00	0.00	0.00	0.00				

C Range: 0 - 360DEG  
C Interval: 5.0DEG  
Test Speed: HIGH  
Temperature:20DEG  
Operators:Y  
Test Date:2024-04-25

γ Range: 0 - 90DEG  
γ Interval: 0.5DEG  
Test System:EVERFINE GO-2000B\_V1 SYSTEM V2.0.291  
Humidity:65.0%  
Test Distance:8.750m [K=1.0000]  
Remarks: