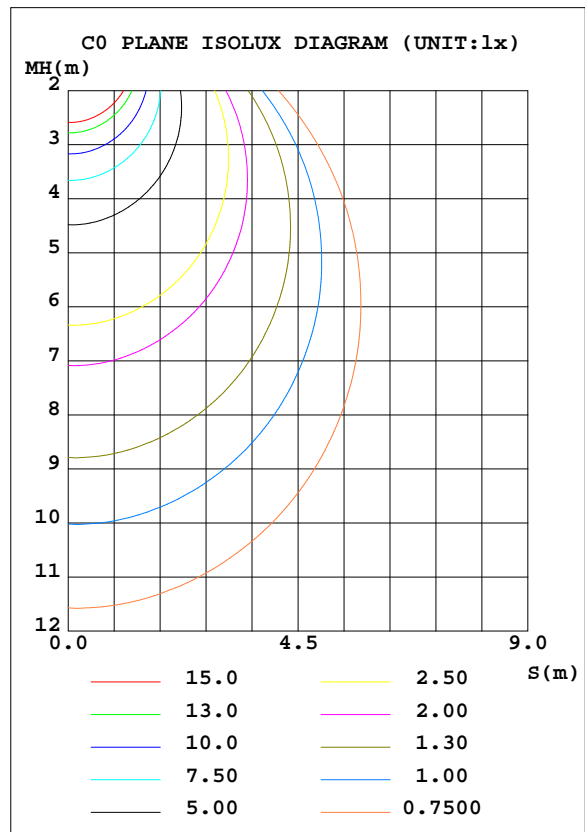
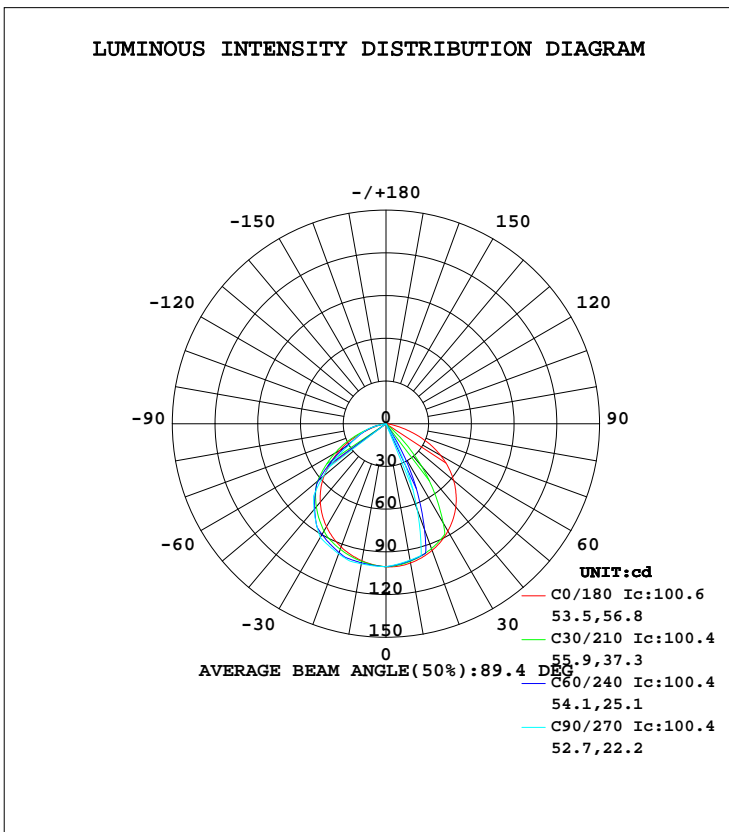


## LUMINAIRE PHOTOMETRIC TEST REPORT

Test:U:11.99V I:0.2829A P:3.189W PF:0.9405 Lamp Flux:235x1 lm		
NAME: 490085-4W-2700K AXLE	TYPE:490085-4W-2700K AXLE	WEIGHT:
SPEC.:	DIM.:	SERIAL No.:
MFR.:	SUR.:	PROTECTION ANGLE:

DATA OF LAMP		PHOTOMETRIC DATA Eff: 71.45 lm/W			
MODEL	490085-4W-2700K AXLE	I <sub>max</sub> (cd)	100.6	S/MH(C0/180)	1.24
NOMINAL POWER(W)	4	LOR(%)	97.0	S/MH(C90/270)	1.34
RATED VOLTAGE(V)	12	TOTAL FLUX(lm)	193.91	η UP, DN(C0-180)	0.0,28.8
NOMINAL FLUX(lm)	200	CIE CLASS	DIRECT	η UP, DN(C180-360)	0.0,68.1
LAMPS INSIDE	1	η up(%)	0.0	CIBSE SHR NOM	0.75
TEST VOLTAGE(V)	12	η down(%)	97.0	CIBSE SHR MAX	0.90



C Range: 0 - 360DEG  
 C Interval: 5.0DEG  
 Test Speed: HIGH  
 Temperature:20DEG  
 Operators:Y  
 Test Date:2024-05-14

γ Range: 0 - 90DEG  
 γ Interval: 0.5DEG  
 Test System:EVERFINE GO-2000B\_V1 SYSTEM V2.0.291  
 Humidity:65.0%  
 Test Distance:8.750m [K=1.0000]  
 Remarks:

ZONAL FLUX DIAGRAM

ZONAL FLUX DIAGRAM:

γ	C0	C45	C90	C135	C180	C225	C270	C315	γ	Φ zone	Φ total	lum, lamp
5	100.5	99.41	98.84	98.74	99.48	99.68	100.2	100.3	0- 5	2.389	2.389	1.23,1.19
10	99.22	97.89	97.28	96.71	97.71	98.63	99.92	99.73	5- 10	7.079	9.468	4.88,4.73
15	97.36	95.91	95.72	94.42	95.25	97.30	99.67	98.73	10- 15	11.57	21.04	10.8,10.5
20	94.67	93.64	64.28	91.78	92.09	95.66	97.19	97.41	15- 20	15.41	36.45	18.8,18.2
25	91.26	72.31	32.84	70.63	88.20	92.17	94.70	94.39	20- 25	17.76	54.21	28,27.1
30	87.06	47.42	1.398	46.14	83.50	88.16	92.21	90.74	25- 30	18.67	72.87	37.6,36.4
35	82.03	22.45	0.9321	21.74	78.08	83.90	85.44	86.76	30- 35	18.61	91.49	47.2,45.7
40	76.30	1.231	0.4660	1.203	71.79	78.92	78.67	82.11	35- 40	18.43	109.9	56.7,55
45	69.53	0.8183	0	0.8020	64.82	70.57	71.90	74.07	40- 45	17.87	127.8	65.9,63.9
50	62.07	0.4033	0	0.3954	56.67	61.84	57.76	65.79	45- 50	16.74	144.5	74.5,72.3
55	53.57	0	0	0	47.45	52.54	43.63	56.80	50- 55	14.73	159.3	82.1,79.6
60	44.13	0	0	0	37.70	38.92	29.50	42.70	55- 60	12.10	171.4	88.4,85.7
65	34.03	0	0	0	27.34	25.79	23.35	29.13	60- 65	9.208	180.6	93.1,90.3
70	22.58	0	0	0	16.06	16.02	17.20	18.67	65- 70	6.625	187.2	96.5,93.6
75	12.25	0	0	0	7.382	10.03	11.05	11.75	70- 75	4.284	191.5	98.7,95.7
80	4.434	0	0	0	1.794	3.986	0	4.638	75- 80	2.059	193.5	99.8,96.8
85	0	0	0	0	0	0	0	0	80- 85	0.3616	193.9	100,97
90	0	0	0	0	0	0	0	0	85- 90	0.0104	193.9	100,97
95									90- 95			
100									95-100			
105									100-105			
110									105-110			
115									110-115			
120									115-120			
125									120-125			
130									125-130			
135									130-135			
140									135-140			
145									140-145			
150									145-150			
155									150-155			
160									155-160			
165									160-165			
170									165-170			
175									170-175			
180									175-180			
DEG	LUMINOUS INTENSITY:cd								UNIT:lm			

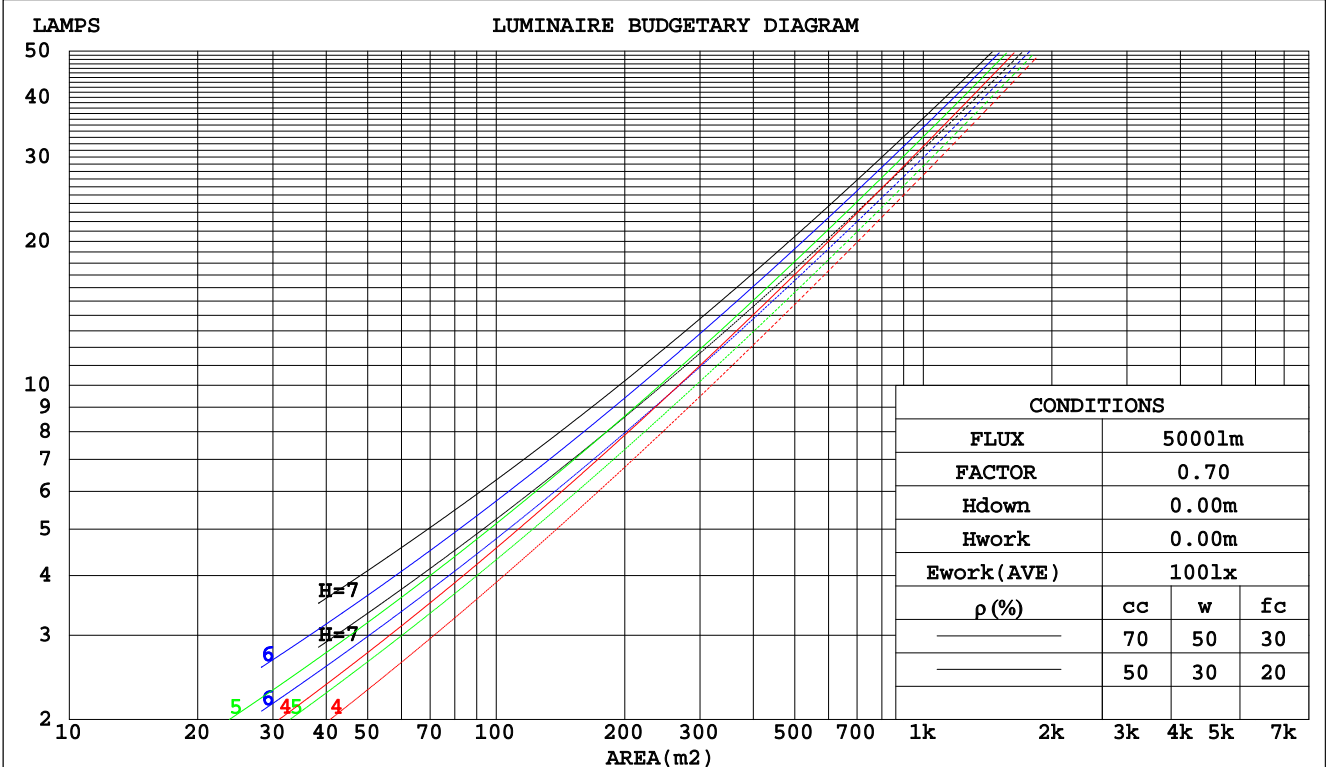
C Range: 0 - 360DEG  
C Interval: 5.0DEG  
Test Speed: HIGH  
Temperature:20DEG  
Operators:Y  
Test Date:2024-05-14

γ Range: 0 - 90DEG  
γ Interval: 0.5DEG  
Test System:EVERFINE GO-2000B\_V1 SYSTEM V2.0.291  
Humidity:65.0%  
Test Distance:8.750m [K=1.0000]  
Remarks:

**CU AND LUMINAIRE BUDGETARY ESTIMATE DIAGRAM**

Test:U:11.99V I:0.2829A P:3.189W PF:0.9405 Lamp Flux:235x1 lm		
NAME: 490085-4W-2700K AXLE	TYPE:490085-4W-2700K AXLE	WEIGHT:
SPEC.:	DIM.:	SERIAL No.:
MFR.:	SUR.:	PROTECTION ANGLE:

pcc	80%			70%			50%			30%			10%			0
	50%	30%	10%	50%	30%	10%	50%	30%	10%	50%	30%	10%	50%	30%	10%	0
pw																0
pfc	20%			20%			20%			20%			20%			0
RCR	RCR:Room Cavity Ratio      Coefficients of Utilization(CU)															
0.0	1.15	1.15	1.15	1.13	1.13	1.13	1.08	1.08	1.08	1.03	1.03	1.03	.99	.99	.99	.97
1.0	1.04	1.00	.97	1.01	.98	.95	.97	.95	.92	.94	.92	.90	.90	.89	.87	.85
2.0	.92	.87	.82	.90	.85	.81	.87	.83	.79	.84	.80	.77	.81	.78	.76	.74
3.0	.82	.75	.70	.81	.74	.69	.78	.73	.68	.76	.71	.67	.73	.69	.66	.64
4.0	.74	.66	.61	.73	.66	.60	.70	.64	.59	.68	.63	.59	.66	.62	.58	.56
5.0	.67	.59	.53	.66	.59	.53	.64	.57	.52	.62	.56	.52	.60	.55	.51	.50
6.0	.61	.53	.47	.60	.53	.47	.58	.52	.47	.57	.51	.46	.55	.50	.46	.44
7.0	.56	.48	.42	.55	.48	.42	.54	.47	.42	.52	.46	.42	.51	.46	.41	.40
8.0	.51	.44	.38	.51	.43	.38	.49	.43	.38	.48	.42	.38	.47	.42	.38	.36
9.0	.47	.40	.35	.47	.40	.35	.46	.39	.35	.45	.39	.35	.44	.38	.34	.33
10.0	.44	.37	.32	.44	.37	.32	.43	.36	.32	.42	.36	.32	.41	.35	.32	.30



C Range: 0 - 360DEG  
C Interval: 5.0DEG  
Test Speed: HIGH  
Temperature:20DEG  
Operators:Y  
Test Date:2024-05-14

γ Range: 0 - 90DEG  
γ Interval: 0.5DEG  
Test System:EVERFINE GO-2000B\_V1 SYSTEM V2.0.291  
Humidity:65.0%  
Test Distance:8.750m [K=1.0000]  
Remarks:

WEC AND CCEC

Test:U:11.99V I:0.2829A P:3.189W PF:0.9405 Lamp Flux:235x1 lm		
NAME: 490085-4W-2700K AXLE	TYPE:490085-4W-2700K AXLE	WEIGHT:
SPEC.:	DIM.:	SERIAL No.:
MFR.:	SUR.:	PROTECTION ANGLE:

ρcc	80%			70%			50%			30%			10%			0
ρw	50%	30%	10%	50%	30%	10%	50%	30%	10%	50%	30%	10%	50%	30%	10%	0
ρfc	20%			20%			20%			20%			20%			0
RCR	RCR:Room Cavity Ratio						Wall Exitance Coefficients(WEC)									
0.0																
1.0	.247	.140	.044	.240	.137	.043	.227	.130	.042	.216	.124	.040	.205	.119	.038	
2.0	.240	.132	.040	.234	.129	.040	.223	.124	.039	.213	.120	.037	.204	.115	.036	
3.0	.227	.121	.036	.222	.119	.036	.212	.115	.035	.203	.111	.034	.195	.108	.033	
4.0	.213	.111	.033	.209	.109	.032	.200	.106	.032	.192	.103	.031	.185	.100	.031	
5.0	.200	.102	.029	.196	.100	.029	.188	.098	.029	.181	.096	.028	.175	.093	.028	
6.0	.187	.094	.027	.184	.093	.027	.177	.091	.026	.171	.089	.026	.165	.087	.026	
7.0	.176	.087	.025	.173	.086	.025	.167	.084	.024	.161	.083	.024	.156	.081	.024	
8.0	.166	.081	.023	.163	.080	.023	.157	.079	.022	.152	.077	.022	.148	.076	.022	
9.0	.156	.076	.021	.154	.075	.021	.149	.074	.021	.144	.072	.021	.140	.071	.021	
10.0	.148	.071	.020	.145	.070	.020	.141	.069	.019	.137	.068	.019	.133	.067	.019	

ρcc	80%			70%			50%			30%			10%			0
ρw	50%	30%	10%	50%	30%	10%	50%	30%	10%	50%	30%	10%	50%	30%	10%	0
ρfc	20%			20%			20%			20%			20%			0
RCR	RCR:Room Cavity Ratio						Ceiling Cavity Exitance Coefficients(CCEC)									
0.0	.185	.185	.185	.158	.158	.158	.108	.108	.108	.062	.062	.062	.020	.020	.020	
1.0	.171	.152	.135	.146	.130	.116	.100	.090	.080	.058	.052	.047	.018	.017	.015	
2.0	.161	.128	.100	.138	.110	.087	.095	.076	.060	.055	.044	.035	.018	.014	.012	
3.0	.153	.111	.077	.131	.095	.067	.090	.066	.047	.052	.039	.028	.017	.013	.009	
4.0	.145	.097	.061	.124	.084	.053	.086	.059	.037	.050	.034	.022	.016	.011	.007	
5.0	.138	.087	.049	.118	.075	.043	.082	.053	.030	.047	.031	.018	.015	.010	.006	
6.0	.131	.079	.041	.113	.068	.036	.078	.048	.025	.045	.028	.015	.015	.009	.005	
7.0	.125	.072	.034	.107	.062	.030	.074	.044	.021	.043	.026	.013	.014	.008	.004	
8.0	.119	.066	.030	.102	.057	.026	.071	.040	.018	.041	.024	.011	.013	.008	.004	
9.0	.114	.061	.026	.098	.053	.023	.068	.037	.016	.039	.022	.010	.013	.007	.003	
10.0	.108	.057	.023	.093	.050	.020	.065	.035	.014	.038	.021	.008	.012	.007	.003	

C Range: 0 - 360DEG  
 C Interval: 5.0DEG  
 Test Speed: HIGH  
 Temperature:20DEG  
 Operators:Y  
 Test Date:2024-05-14

γ Range: 0 - 90DEG  
 γ Interval: 0.5DEG  
 Test System:EVERFINE GO-2000B\_V1 SYSTEM V2.0.291  
 Humidity:65.0%  
 Test Distance:8.750m [K=1.0000]  
 Remarks:

UGR(Unified Glare Rating) Table

Test:U:11.99V I:0.2829A P:3.189W PF:0.9405 Lamp Flux:235x1 lm		
NAME: 490085-4W-2700K AXLE	TYPE:490085-4W-2700K AXLE	WEIGHT:
SPEC.:	DIM.:	SERIAL No.:
MFR.:	SUR.:	PROTECTION ANGLE:

ceiling/cavity	0.7	0.7	0.5	0.5	0.3	0.7	0.7	0.5	0.5	0.3
walls	0.5	0.3	0.5	0.3	0.3	0.5	0.3	0.5	0.3	0.3
working plane	0.2	0.2	0.2	0.2	0.2	0.2	0.2	0.2	0.2	0.2

Room dimensions	Viewed crosswise					Viewed endwise				
x = 2H y = 2H	8.2	9.6	8.5	9.8	9.9	-26.5	-25.1	-26.2	-24.9	-24.7
3H	9.1	10.4	9.4	10.6	10.8	-26.7	-25.4	-26.4	-25.2	-25.0
4H	9.3	10.5	9.6	10.7	11.0	-26.8	-25.6	-26.5	-25.4	-25.1
6H	9.3	10.4	9.6	10.7	10.9	-26.9	-25.8	-26.6	-25.5	-25.2
8H	9.3	10.3	9.6	10.6	10.9	-26.9	-25.9	-26.6	-25.6	-25.3
12H	9.2	10.2	9.6	10.5	10.8	-27.0	-26.0	-26.6	-25.7	-25.4
4H 2H	7.9	9.1	8.2	9.3	9.6	-23.2	-22.0	-22.9	-21.8	-21.5
3H	8.8	9.8	9.2	10.1	10.4	-23.4	-22.4	-23.1	-22.1	-21.8
4H	9.0	9.9	9.4	10.2	10.6	-23.5	-22.6	-23.1	-22.2	-21.9
6H	9.0	9.8	9.4	10.2	10.5	-23.6	-22.8	-23.2	-22.4	-22.1
8H	9.0	9.7	9.4	10.1	10.5	-23.6	-22.9	-23.2	-22.5	-22.1
12H	8.9	9.6	9.3	10.0	10.4	-23.7	-23.0	-23.3	-22.6	-22.2
8H 4H	8.9	9.6	9.3	10.0	10.4	-23.6	-22.9	-23.2	-22.5	-22.1
6H	8.9	9.5	9.3	9.9	10.3	-23.7	-23.1	-23.3	-22.7	-22.3
8H	8.8	9.4	9.3	9.8	10.3	-23.7	-23.2	-23.3	-22.8	-22.3
12H	8.8	9.3	9.3	9.7	10.2	-23.8	-23.3	-23.3	-22.9	-22.4
12H 4H	8.8	9.5	9.2	9.9	10.3	-23.7	-23.0	-23.2	-22.6	-22.2
6H	8.8	9.4	9.3	9.8	10.2	-23.7	-23.2	-23.3	-22.8	-22.3
8H	8.8	9.3	9.3	9.7	10.2	-23.8	-23.3	-23.3	-22.9	-22.4

Variations with the observer position at spacings:		
S = 1.0H	+ 1.6 / - 5.7	+ 2.5 / -83.6
1.5H	+ 2.9 / -24.1	+ 3.9 / - 1.5
2.0H	+ 3.9 / -43.6	+ 6.1 / - 1.5

CIE Pub.117 Corrected 200.0 lm Total Lamp Luminous Flux. (8log(F/F0) = -5.6)

C Range: 0 - 360DEG  
 C Interval: 5.0DEG  
 Test Speed: HIGH  
 Temperature:20DEG  
 Operators:Y  
 Test Date:2024-05-14

γ Range: 0 - 90DEG  
 γ Interval: 0.5DEG  
 Test System:EVERFINE GO-2000B\_V1 SYSTEM V2.0.291  
 Humidity:65.0%  
 Test Distance:8.750m [K=1.0000]  
 Remarks:

**UTILIZATION FACTORS TABLE**

Test:U:11.99V I:0.2829A P:3.189W PF:0.9405 Lamp Flux:235x1 lm		
NAME: 490085-4W-2700K AXLE	TYPE:490085-4W-2700K AXLE	WEIGHT:
SPEC.:	DIM.:	SERIAL No.:
MFR.:	SUR.:	PROTECTION ANGLE:

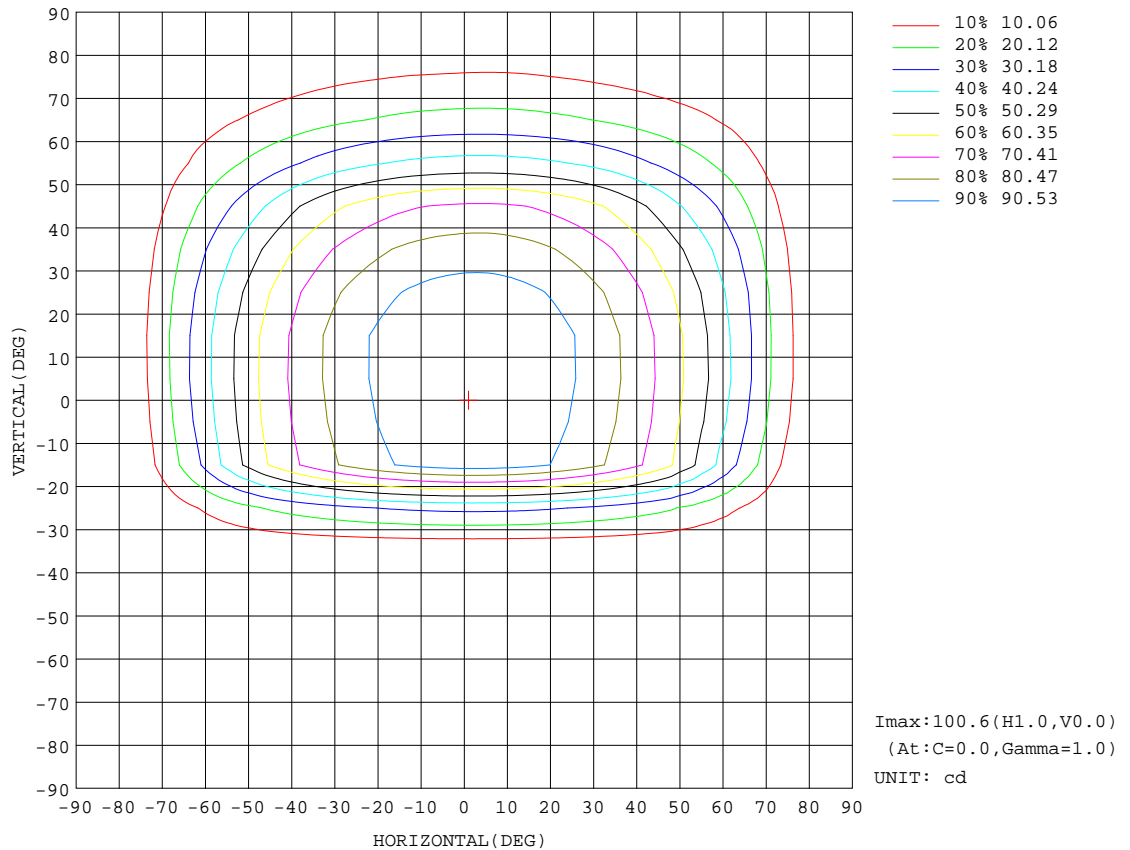
REFLECTANCE										
Ceiling	0.8	0.8	0.8	0.7	0.7	0.7	0.5	0.5	0.5	0
Walls	0.7	0.5	0.3	0.7	0.5	0.3	0.7	0.5	0.3	0
Working plane	0.2	0.2	0.2	0.2	0.2	0.2	0.2	0.2	0.2	0
ROOM INDEX	UTILIZATION FACTORS(PERCENT) $k(RI) \times RCR = 5$									
k = 0.60	62	52	46	62	52	46	61	52	46	40
0.80	72	62	56	71	62	56	70	61	55	50
1.00	80	71	65	79	70	64	77	71	64	58
1.25	86	78	72	85	77	72	83	76	71	65
1.50	91	83	77	89	82	77	87	80	76	69
2.00	97	90	85	95	89	84	92	87	82	76
2.50	100	93	89	98	92	88	94	90	86	79
3.00	102	97	93	100	96	92	97	93	89	82
4.00	106	101	97	103	99	96	100	96	94	86
5.00	108	104	101	105	102	99	101	98	96	88
ROOM INDEX	UF(total)									Direct
According to DIN EN 13032-2 2004			Suspended				SHRNOM = 1.25			

C Range: 0 - 360DEG  
C Interval: 5.0DEG  
Test Speed: HIGH  
Temperature:20DEG  
Operators:Y  
Test Date:2024-05-14

$\gamma$  Range: 0 - 90DEG  
 $\gamma$  Interval: 0.5DEG  
Test System:EVERFINE GO-2000B\_V1 SYSTEM V2.0.291  
Humidity:65.0%  
Test Distance:8.750m [K=1.0000]  
Remarks:

**ISOCANDELA DIAGRAM**

Test:U:11.99V I:0.2829A P:3.189W PF:0.9405 Lamp Flux:235x1 lm		
NAME: 490085-4W-2700K AXLE	TYPE:490085-4W-2700K AXLE	WEIGHT:
SPEC.:	DIM.:	SERIAL No.:
MFR.:	SUR.:	PROTECTION ANGLE:

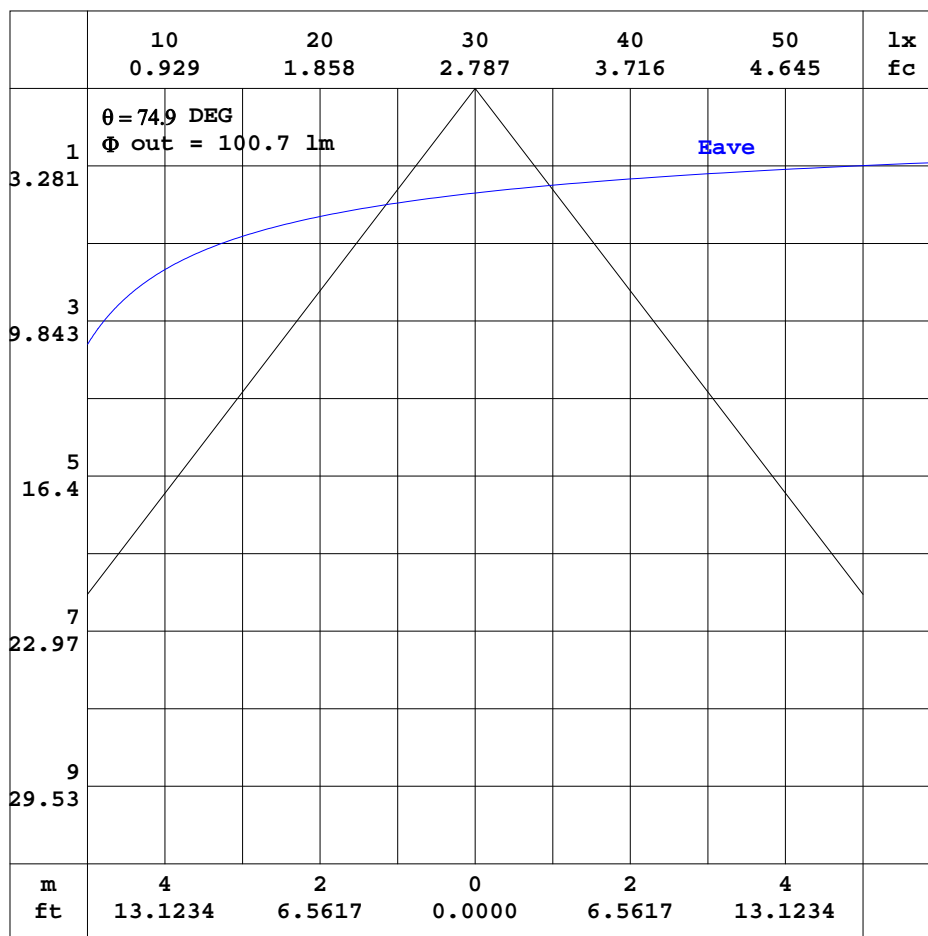


C Range: 0 - 360DEG  
C Interval: 5.0DEG  
Test Speed: HIGH  
Temperature:20DEG  
Operators:Y  
Test Date:2024-05-14

γ Range: 0 - 90DEG  
γ Interval: 0.5DEG  
Test System:EVERFINE GO-2000B\_V1 SYSTEM V2.0.291  
Humidity:65.0%  
Test Distance:8.750m [K=1.0000]  
Remarks:

**AAI CURVES**

Test:U:11.99V I:0.2829A P:3.189W PF:0.9405 Lamp Flux:235x1 lm		
NAME: 490085-4W-2700K AXLE	TYPE:490085-4W-2700K AXLE	WEIGHT:
SPEC.:	DIM.:	SERIAL No.:
MFR.:	SUR.:	PROTECTION ANGLE:



Note:The Curves indicate the illuminated area and the average illumination when the luminaire is at different distance.

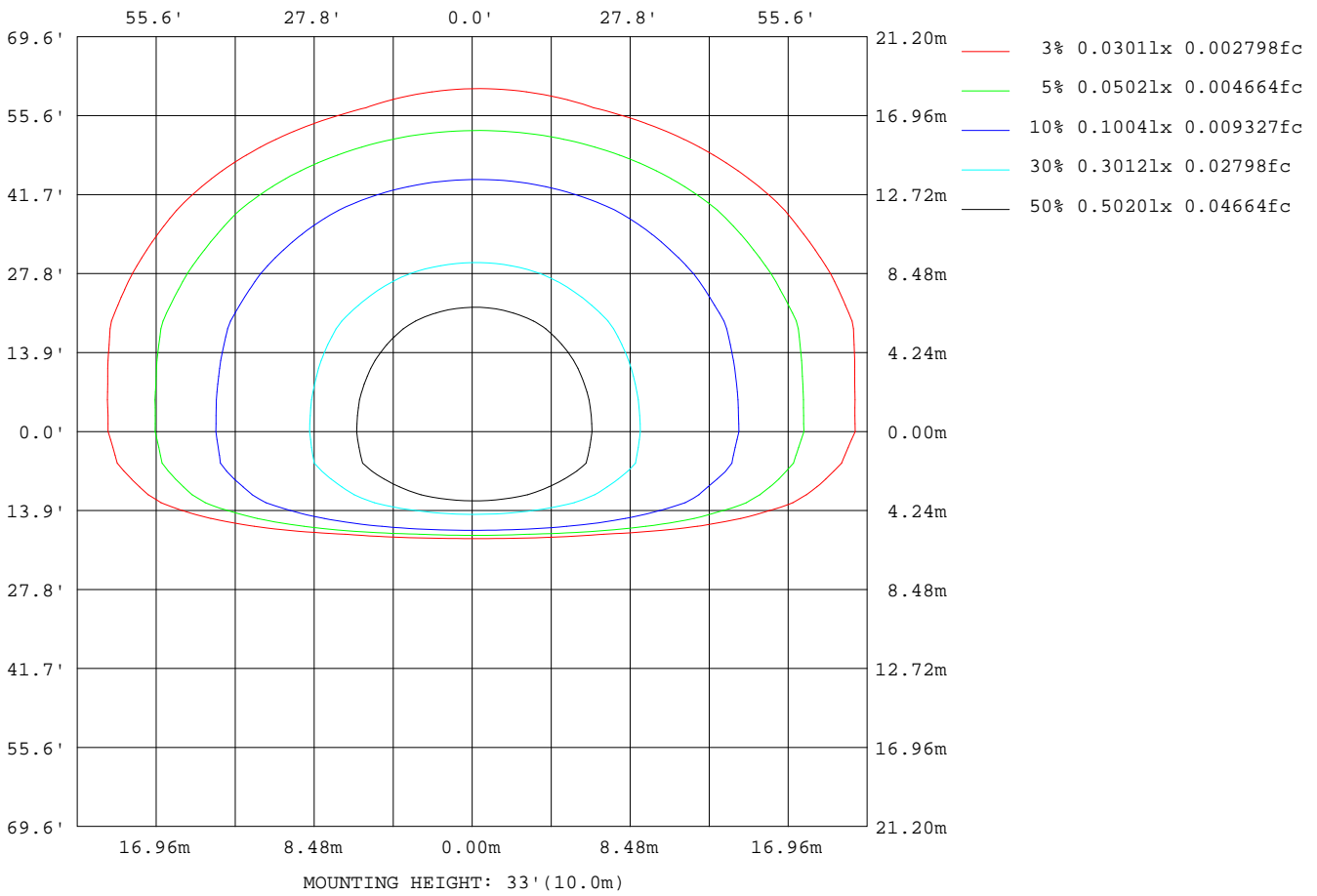
C Range: 0 - 360DEG  
C Interval: 5.0DEG  
Test Speed: HIGH  
Temperature:20DEG  
Operators:Y  
Test Date:2024-05-14

γ Range: 0 - 90DEG  
γ Interval: 0.5DEG  
Test System:EVERFINE GO-2000B\_V1 SYSTEM V2.0.291  
Humidity:65.0%  
Test Distance:8.750m [K=1.0000]  
Remarks:



**ISOLUX DIAGRAM**

Test:U:11.99V I:0.2829A P:3.189W PF:0.9405 Lamp Flux:235x1 lm		
NAME: 490085-4W-2700K AXLE	TYPE:490085-4W-2700K AXLE	WEIGHT:
SPEC.:	DIM.:	SERIAL No.:
MFR.:	SUR.:	PROTECTION ANGLE:



C Range: 0 - 360DEG  
 C Interval: 5.0DEG  
 Test Speed: HIGH  
 Temperature:20DEG  
 Operators:Y  
 Test Date:2024-05-14

γ Range: 0 - 90DEG  
 γ Interval: 0.5DEG  
 Test System:EVERFINE GO-2000B\_V1 SYSTEM V2.0.291  
 Humidity:65.0%  
 Test Distance:8.750m [K=1.0000]  
 Remarks:

**LED Avg.L Report**

Test:U:11.99V I:0.2829A P:3.189W PF:0.9405 Lamp Flux:235x1 lm		
NAME: 490085-4W-2700K AXLE	TYPE:490085-4W-2700K AXLE	WEIGHT:
SPEC.:	DIM.:	SERIAL No.:
MFR.:	SUR.:	PROTECTION ANGLE:

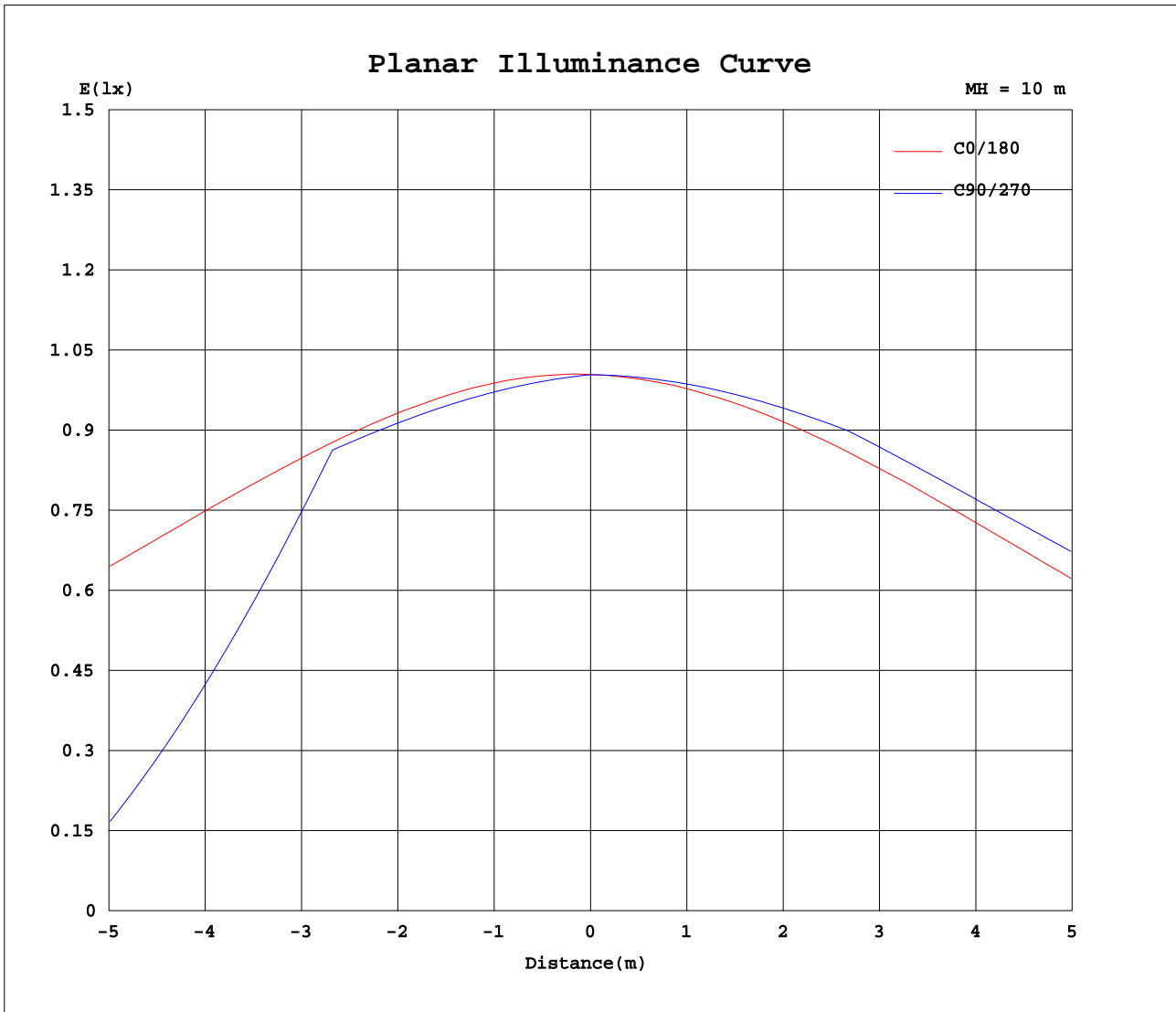
AvgL	cd/m2
L_0~180(65)av	363
L_0~180(75)av	190
L_0~180(85)av	0
L_90~270(65)av	138
L_90~270(75)av	107
L_90~270(85)av	0
L_45(65)av	162
L_45(75)av	105
L_45(85)av	0

Standard: GB/T 29293-2012

C Range: 0 - 360DEG  
C Interval: 5.0DEG  
Test Speed: HIGH  
Temperature:20DEG  
Operators:Y  
Test Date:2024-05-14

γ Range: 0 - 90DEG  
γ Interval: 0.5DEG  
Test System:EVERFINE GO-2000B\_V1 SYSTEM V2.0.291  
Humidity:65.0%  
Test Distance:8.750m [K=1.0000]  
Remarks:

Planar Illuminance Curve



C Range: 0 - 360DEG  
C Interval: 5.0DEG  
Test Speed: HIGH  
Temperature: 20DEG  
Operators: Y  
Test Date: 2024-05-14

γ Range: 0 - 90DEG  
γ Interval: 0.5DEG  
Test System: EVERFINE GO-2000B\_V1 SYSTEM V2.0.291  
Humidity: 65.0%  
Test Distance: 8.750m [K=1.0000]  
Remarks:

LUMINOUS DISTRIBUTION INTENSITY DATA

Test:U:11.99V I:0.2829A P:3.189W PF:0.9405 Lamp Flux:235x1 lm		
NAME: 490085-4W-2700K AXLE	TYPE:490085-4W-2700K AXLE	WEIGHT:
SPEC.:	DIM.:	SERIAL No.:
MFR.:	SUR.:	PROTECTION ANGLE:

Table--1

UNIT: cd

C( DEG) γ (DEG)	0	5	10	15	20	25	30	35	40	45	50	55	60	65	70	75	80	85	90
0	100	100	100	100	100	100	100	100	100	100	100	100	100	100	100	100	100	100	100
5	100	100	100	100	99.9	99.8	99.7	99.6	99.5	99.4	99.3	99.2	99.2	99.1	99.1	99.0	99.0	98.9	98.8
10	99.2	99.0	98.8	98.6	98.4	98.3	98.1	98.0	97.9	97.9	97.8	97.7	97.7	97.6	97.5	97.5	97.4	97.4	97.3
15	97.4	97.0	96.7	96.4	96.2	96.1	96.0	96.0	95.9	95.9	95.9	95.9	95.9	95.9	95.9	95.9	95.8	95.8	95.7
20	94.7	94.2	93.8	93.6	93.4	93.3	93.3	93.4	93.5	93.6	90.4	84.5	79.3	74.8	71.1	68.2	66.1	64.8	64.3
25	91.3	90.7	90.3	90.0	89.9	90.0	90.1	90.3	81.0	72.3	64.4	57.2	50.9	45.5	41.0	37.5	34.9	33.4	32.8
30	87.1	86.4	85.9	85.7	85.7	85.9	80.4	68.6	57.6	47.4	38.1	29.8	22.4	16.1	10.8	6.73	3.77	1.99	1.40
35	82.0	81.2	80.7	80.6	80.8	73.7	59.7	46.4	34.0	22.4	11.9	2.32	1.25	1.15	1.07	1.01	0.97	0.94	0.93
40	76.3	75.3	74.8	74.8	70.4	54.3	38.8	24.2	10.3	1.23	1.08	0.94	0.81	0.71	0.62	0.55	0.50	0.47	0.47
45	69.5	68.5	68.1	68.3	52.2	34.8	18.0	2.04	1.01	0.82	0.65	0.50	0.37	0.26	0.16	0.09	0.04	0.01	0.00
50	62.1	60.3	59.8	52.9	33.9	15.5	1.09	0.84	0.61	0.40	0.22	0.06	0.00	0.00	0.00	0.00	0.00	0.00	0.00
55	53.6	51.0	50.1	34.4	15.5	0.98	0.70	0.43	0.19	0.00	0.00	0.00	0.00	0.00	0.00	0.00	0.00	0.00	0.00
60	44.1	40.6	35.2	17.6	0.90	0.58	0.29	0.01	0.00	0.00	0.00	0.00	0.00	0.00	0.00	0.00	0.00	0.00	0.00
65	34.0	29.4	19.4	2.98	0.50	0.17	0.00	0.00	0.00	0.00	0.00	0.00	0.00	0.00	0.00	0.00	0.00	0.00	0.00
70	22.6	18.0	6.57	0.43	0.09	0.00	0.00	0.00	0.00	0.00	0.00	0.00	0.00	0.00	0.00	0.00	0.00	0.00	0.00
75	12.3	7.11	0.32	0.03	0.00	0.00	0.00	0.00	0.00	0.00	0.00	0.00	0.00	0.00	0.00	0.00	0.00	0.00	0.00
80	4.43	0.73	0.01	0.00	0.00	0.00	0.00	0.00	0.00	0.00	0.00	0.00	0.00	0.00	0.00	0.00	0.00	0.00	0.00
85	0.00	0.00	0.00	0.00	0.00	0.00	0.00	0.00	0.00	0.00	0.00	0.00	0.00	0.00	0.00	0.00	0.00	0.00	0.00
90	0.00	0.00	0.00	0.00	0.00	0.00	0.00	0.00	0.00	0.00	0.00	0.00	0.00	0.00	0.00	0.00	0.00	0.00	0.00

C Range: 0 - 360DEG  
C Interval: 5.0DEG  
Test Speed: HIGH  
Temperature:20DEG  
Operators:Y  
Test Date:2024-05-14

γ Range: 0 - 90DEG  
γ Interval: 0.5DEG  
Test System:EVERFINE GO-2000B\_V1 SYSTEM V2.0.291  
Humidity:65.0%  
Test Distance:8.750m [K=1.0000]  
Remarks:

LUMINOUS DISTRIBUTION INTENSITY DATA

Test:U:11.99V I:0.2829A P:3.189W PF:0.9405 Lamp Flux:235x1 lm		
NAME: 490085-4W-2700K AXLE	TYPE:490085-4W-2700K AXLE	WEIGHT:
SPEC.:	DIM.:	SERIAL No.:
MFR.:	SUR.:	PROTECTION ANGLE:

Table--2

UNIT: cd

C(DEG) γ (DEG)	95	100	105	110	115	120	125	130	135	140	145	150	155	160	165	170	175	180	185
0	100	100	100	100	100	100	100	100	100	100	100	100	100	100	100	100	100	100	100
5	98.8	98.8	98.8	98.7	98.7	98.7	98.7	98.7	98.7	98.8	98.8	98.9	98.9	99.0	99.1	99.2	99.4	99.5	99.5
10	97.2	97.2	97.1	97.0	96.9	96.9	96.8	96.8	96.7	96.7	96.7	96.8	96.9	97.0	97.1	97.3	97.5	97.7	97.7
15	95.6	95.5	95.4	95.2	95.1	94.9	94.7	94.6	94.4	94.3	94.2	94.2	94.2	94.3	94.4	94.6	94.9	95.2	95.3
20	64.6	65.8	67.7	70.4	73.9	78.2	83.1	88.7	91.8	91.5	91.3	91.1	91.1	91.1	91.2	91.4	91.7	92.1	92.1
25	33.3	34.7	37.2	40.5	44.8	50.0	56.1	63.0	70.6	79.0	87.9	87.5	87.3	87.2	87.2	87.3	87.7	88.2	88.3
30	1.98	3.75	6.67	10.7	15.8	22.0	29.1	37.2	46.1	55.9	66.4	77.6	82.8	82.5	82.4	82.5	82.9	83.5	83.6
35	0.94	0.96	1.01	1.06	1.14	1.24	2.28	11.5	21.7	32.8	44.7	57.3	70.6	77.3	77.0	77.0	77.3	78.1	78.2
40	0.47	0.50	0.55	0.61	0.70	0.80	0.92	1.05	1.20	9.97	23.2	37.1	51.6	66.8	70.8	70.7	71.0	71.8	71.9
45	0.01	0.04	0.09	0.16	0.25	0.36	0.49	0.63	0.80	0.99	1.99	17.1	32.9	49.1	63.9	63.6	63.9	64.8	64.9
50	0.00	0.00	0.00	0.00	0.00	0.00	0.06	0.22	0.40	0.60	0.82	1.06	14.5	31.6	48.6	55.1	55.4	56.7	56.9
55	0.00	0.00	0.00	0.00	0.00	0.00	0.00	0.00	0.00	0.19	0.42	0.67	0.94	14.4	31.8	45.8	46.0	47.4	47.9
60	0.00	0.00	0.00	0.00	0.00	0.00	0.00	0.00	0.00	0.00	0.01	0.27	0.55	0.84	15.9	31.5	35.5	37.7	38.2
65	0.00	0.00	0.00	0.00	0.00	0.00	0.00	0.00	0.00	0.00	0.00	0.00	0.16	0.46	2.60	16.7	24.7	27.3	28.4
70	0.00	0.00	0.00	0.00	0.00	0.00	0.00	0.00	0.00	0.00	0.00	0.00	0.00	0.08	0.35	5.34	14.1	16.1	18.0
75	0.00	0.00	0.00	0.00	0.00	0.00	0.00	0.00	0.00	0.00	0.00	0.00	0.00	0.00	0.03	0.23	5.12	7.38	8.77
80	0.00	0.00	0.00	0.00	0.00	0.00	0.00	0.00	0.00	0.00	0.00	0.00	0.00	0.00	0.00	0.00	0.43	1.79	2.65
85	0.00	0.00	0.00	0.00	0.00	0.00	0.00	0.00	0.00	0.00	0.00	0.00	0.00	0.00	0.00	0.00	0.00	0.00	0.20
90	0.00	0.00	0.00	0.00	0.00	0.00	0.00	0.00	0.00	0.00	0.00	0.00	0.00	0.00	0.00	0.00	0.00	0.00	0.00

C Range: 0 - 360DEG  
C Interval: 5.0DEG  
Test Speed: HIGH  
Temperature:20DEG  
Operators:Y  
Test Date:2024-05-14

γ Range: 0 - 90DEG  
γ Interval: 0.5DEG  
Test System:EVERFINE GO-2000B\_V1 SYSTEM V2.0.291  
Humidity:65.0%  
Test Distance:8.750m [K=1.0000]  
Remarks:



