



100W | 150W | 210W | 230W

PRODUCT OVERVIEW

Series DHBG8 Circular High Bays feature a compact design with exceptional performance for energy-efficient commercial illumination. All models include power & CCT adjustment controls, with an optional plug and play motion sensor.



KEY FEATURES

CONSTRUCTION:

- Rugged die-cast aluminum housing with integral heat sink fins.
- Housing is completely sealed against moisture and environmental contaminants.

FINISH:

- The exterior is protected by a black rust-resistant polyester powder coat finish that provides superior resistance to weathering and corrosion.

OPTICS:

- Light engines are available in standard 4000K and 5000K configurations with a 2 CCT control.
- A range of lumen options available from 14,500 to 35,000 Lumens, replaces up to 400W metal halide.
- Impact and UV-resistant polycarbonate lens is precisely designed to give a specific light distribution, maximizing efficiency and application spacing.
- Optional aluminum reflector available for different beam angles.

ELECTRICAL:

- Standard 120-277V input voltage.
- 0-10V dimming driver(s) as default for a dimming range of 100% to 10%.
- THD: ≤20%, Power Factor: ≥90%.

CONTROLS:

- Power & CCT adjustment controls standard.
- Optional center-mounted, plug & play multi-level motion sensor - ANT-6-4T.
- Optional emergency battery backup provides up to 90 minutes of operation during outages.
- Bluetooth networked controls that are DLC NLC qualified, utilizing a Bluetooth SIG mesh network operated with iOS and web, optional for all models.

INSTALLATION:

- Pendant mount or hook mount options are available.
- Surface mounting with optional Adjustable Surface Mounting Bracket allows precise aiming of the fixture to 0°, 30°, 60°, 90°, 120°, 150°, or 180°.

WARRANTY:

- 5 Year Limited Warranty.

LISTINGS:

- DesignLights Consortium® (DLC) Premium qualified.
- UL Wet Location Listed.
- Rated for ambient operating temperature -40°F to 122°F (-40°C to 50°C).

PERFORMANCE DATA

Lumen Output - 100W

Setting	System Watts	CRI	4000K		5000K	
			Lumens	Efficacy	Lumens	Efficacy
100%	100W	70	16000lm	160lm/W	14500lm	145lm/W
80%	80W	70	13000lm	163lm/W	12000lm	150lm/W
60%	60W	70	10000lm	167lm/W	9400lm	157lm/W
40%	40W	70	7000lm	175lm/W	6500lm	163lm/W

Lumen Output - 150W

Setting	System Watts	CRI	4000K		5000K	
			Lumens	Efficacy	Lumens	Efficacy
100%	150W	70	24000lm	160lm/W	22500lm	150lm/W
80%	120W	70	20000lm	167lm/W	19000lm	158lm/W
60%	90W	70	15500lm	172lm/W	14600lm	162lm/W
40%	60W	70	10800lm	180lm/W	10000lm	167lm/W

Lumen Output - 210W

Setting	System Watts	CRI	4000K		5000K	
			Lumens	Efficacy	Lumens	Efficacy
100%	210W	70	32000lm	152lm/W	30500lm	145lm/W
80%	168W	70	26500lm	158lm/W	25000lm	149lm/W
60%	126W	70	21000lm	167lm/W	20000lm	159lm/W
40%	84W	70	14500lm	173lm/W	14000lm	167lm/W

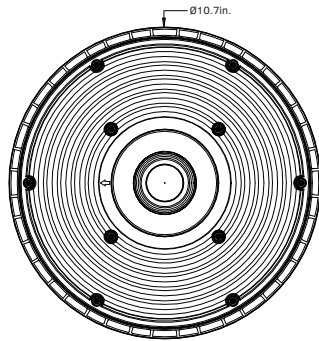
Lumen Output - 230W

Setting	System Watts	CRI	4000K		5000K	
			Lumens	Efficacy	Lumens	Efficacy
100%	230W	70	36000lm	157lm/W	35000lm	152lm/W
80%	184W	70	30000lm	163lm/W	29000lm	158lm/W
60%	138W	70	24000lm	174lm/W	23000lm	167lm/W
40%	92W	70	16500lm	179lm/W	16000lm	174lm/W

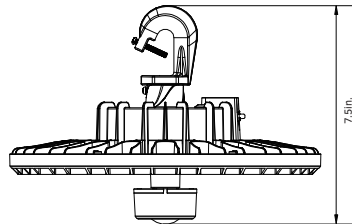
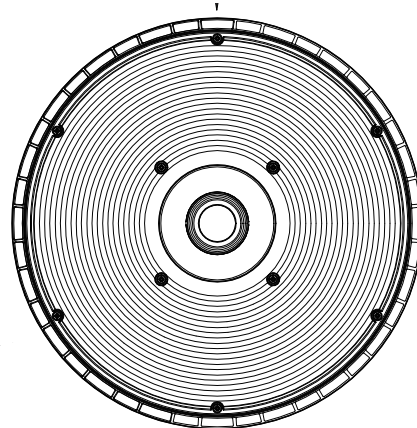
Electrical Data

Number Of Drivers	Driver Current (mA)	Nominal Power (W)	Input Voltage (V)	Current (Amps)
1	800	100	120	0.83
		100	208	0.48
		100	240	0.42
		100	277	0.36
1	1150	150	120	1.25
		150	208	0.72
		150	240	0.63
		150	277	0.54
1	1700	210	120	1.75
		210	208	1.01
		210	240	0.88
		210	277	0.76
1	1750	230	120	1.92
		230	208	1.11
		230	240	0.96
		230	277	0.83

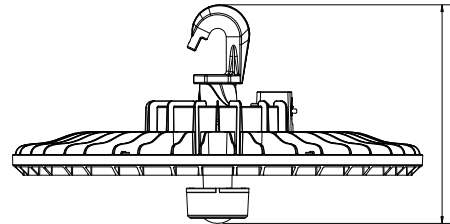
100W / 150W



210W / 230W



Weight:
100W: 3.68lb.
150W: 3.68lb.



Weight:
210W: 6.53lb.
230W: 6.53lb.

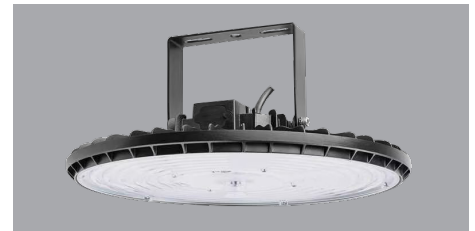
MOUNTING OPTIONS



HOOK MOUNT
Included hook mount features an anti-shedding screw for added security.



PENDANT MOUNT
A 3/4" conduit entry point ensures easy pendant installation.



ADJUSTABLE SURFACE MOUNTING BRACKET
Allows precise aiming of the fixture to 0°, 30°, 60°, 90°, 120°, 150°, or 180°.

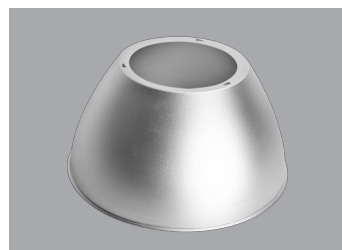
ACCESSORIES



MULTI-LEVEL MOTION SENSOR
Center-mounted plug & play multi-level motion sensor detects occupancy in an area for additional energy savings.



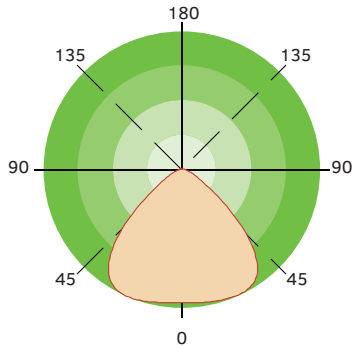
EMERGENCY BATTERY BACKUP
Emergency battery backup provides up to 90 minutes of operation during power outages.



ALUMINUM REFLECTOR
Optional aluminum reflector provides a more focused light distribution.

LIGHT DISTRIBUTION

General High Bay



ORDERING INFORMATION

Circular High Bay Series DHBG8

Example: DHBG8210W27VDDKBM

Fixture Type	Wattage	Voltage	CCT	Finish	Sensor (Optional)	Emergency Battery (Optional)	Adjustment Dial	Internal Code
<input type="text"/>	<input type="text"/>	<input type="text"/>	<input type="text"/>	<input type="text"/>	<input type="text"/>	<input type="text"/>	<input type="text"/>	<input type="text"/>
DHBG8	100W 150W 210W 230W	27V 120-277V	DDK Power & CCT Tunable	B Black D Dark Bronze W White	M With Sensor Blank Without Sensor	B With Emergency Battery Blank Without Emergency Battery	AD With Adjustment Dial Blank Without Adjustment Dial	Blank Alphanumeric 2 With 2 CCTs