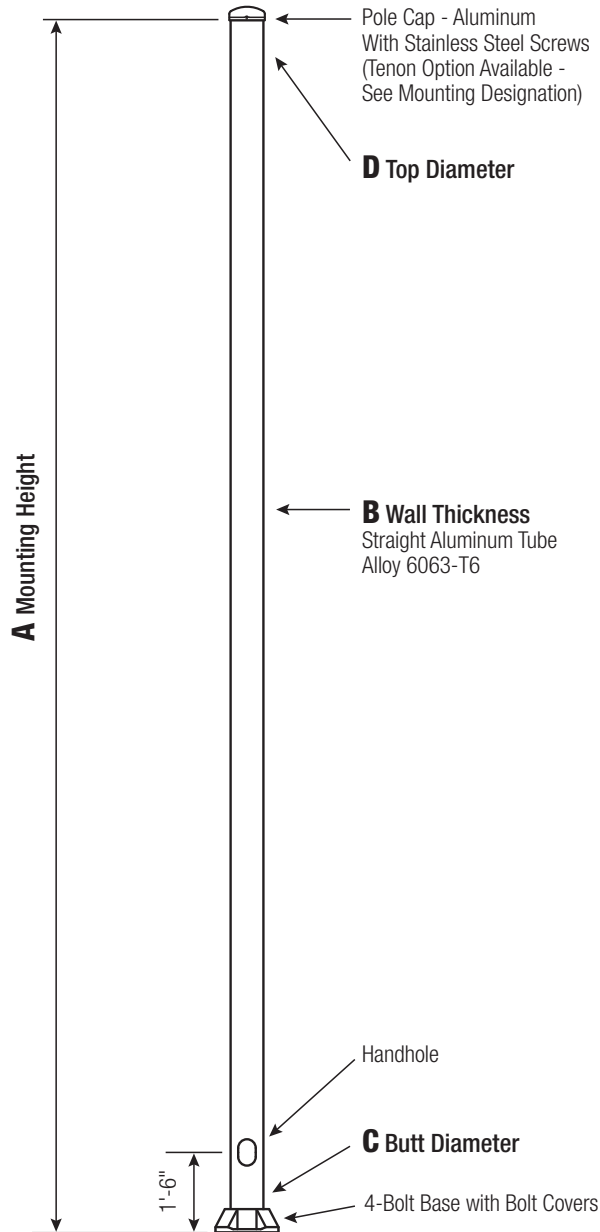
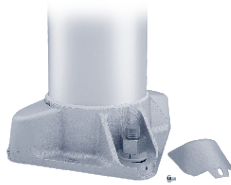


**POLE**

The pole shaft will be constructed of seamless extruded tube of 6063 Aluminum Alloy per the requirements of ASTM B221. The shaft assembly shall be full-length heat treated after base weld to produce a T6 temper.

**BASE STYLE**

4-Bolt Cast Aluminum Base Flange of Alloy 356-T6 with Aluminum Bolt Covers (Alloy 356-F) and Stainless Steel Hex Head Attaching Screws.



Satin aluminum or powder coated finish per customer specification.

| <b>C</b><br>BUTT DIA. | <b>D</b><br>TOP DIA. | <b>F</b><br>BOLT CIR. DIA. | <b>G</b><br>BASE SQ. | <b>H</b><br>BOLT PROJ. | <b>I</b><br>BOLT SIZE |
|-----------------------|----------------------|----------------------------|----------------------|------------------------|-----------------------|
| 4                     | 4                    | 6.5 - 8                    | 7.5                  | 2                      | .75 x 17 x 3          |
| 5                     | 5                    | 7.5 - 8                    | 7.5                  | 2                      | .75 x 17 x 3          |
| 6                     | 6                    | 9 - 10                     | 9.75                 | 2.75                   | .75 x 30 x 3*         |
| 7                     | 7                    | 10 - 11                    | 10.5                 | 2.75                   | 1 x 36 x 4            |
| 8                     | 8                    | 11 - 12                    | 11.25                | 2.75                   | 1 x 36 x 4            |
| 9                     | 9                    | 12.5 - 14                  | 12.75                | 2.75                   | 1 x 36 x 4            |
| 10 Up To .250"        | 10                   | 14 - 15                    | 14                   | 3.25                   | 1 x 48 x 4            |
| 10 .312"              | 10                   | 14 - 15                    | 14                   | 3.25                   | 1.25 x 48 x 6         |

\* 1" x 36" x 4" Anchor Bolts can be specified for 6" butt diameter poles.

Dimensions in Inches.

## HANDHOLE

**4"-5" Butt Diameters** - 2" x 4" Handhole with curved Lap Style Aluminum Door and two (2) SS Self-Tapping Attaching Screws. A Grounding Provision incorporating a tapped 1/4"-20NC hole is provided opposite the Handhole.

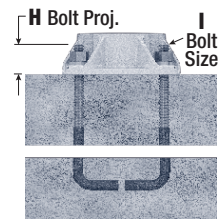
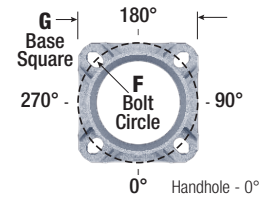
**6" Butt Diameter** - Reinforced, 3" x 5" curved Cast Aluminum Frame (Alloy 356-T6) with Aluminum Door and two (2) SS Hex Head Screws. A Grounding Provision incorporating a 3/8" diameter hole is provided opposite the Handhole.

**7"+ Butt Diameters** - Reinforced, 4" x 6" curved Cast Aluminum Frame (Alloy 356-T6) with Aluminum Door and two (2) SS Hex Head Screws. Reinforced Frame will contain a tapped 3/8"-16NC Grounding Provision.

## ANCHORAGE

Anchorage Kit will include four (4) L-shaped Steel Anchor Bolts conforming to AASHTO M314-90 Grade 55. Ten inches (10") of threaded end will be galvanized per ASTM A153.

Kits will contain four (4) Hex Nuts, four (4) Lock Washers, and four (4) Flat Washers (all components Galvanized Steel). A bolt circle template will be provided.



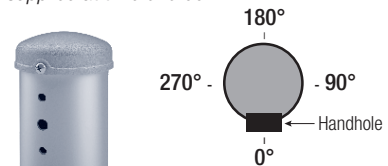
## VIBRATION DAMPER

When determined necessary by Dauer, a Vibration Damper will be factory-installed inside the pole shaft. Customer specification of the damper is available.

## MOUNTING DESIGNATION

### Side Drill Mount

For Side Drill Mount applications specify luminaire type, quantity and orientation. A luminaire drilling template must be supplied at time of order.



### Tenon Mount

For Tenon Mount applications specify both Tenon diameter (2.375", 2.875", 3.5", etc.) and length (3", 4", etc.).

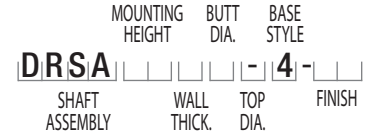


**WARNING:** Do not install light pole without luminaire.

| A<br>MTG.<br>HGT. | B<br>WALL<br>THICKNESS | C<br>BUTT<br>DIAMETER | TOTAL<br>LUM.<br>WEIGHT | MAXIMUM EPA |      |      |      |      | OLD CATALOG<br>NUMBER | CATALOG<br>NUMBER |
|-------------------|------------------------|-----------------------|-------------------------|-------------|------|------|------|------|-----------------------|-------------------|
|                   |                        |                       |                         | 90          | 100  | 110  | 120  | 130  |                       |                   |
| 08                | 0.125"                 | 4                     | 100                     | 11.4        | 9.0  | 8.3  | 6.8  | 5.6  | 78S-002               | DRSA08B4-4-**-    |
| 10                | 0.125"                 | 4                     | 100                     | 8.1         | 6.2  | 5.7  | 4.6  | 3.7  | 78S-003               | DRSA10B4-4-**-    |
| 10                | 0.125"                 | 5                     | 100                     | 15.8        | 12.4 | 11.6 | 9.6  | 8.2  | 78S-012               | DRSA10B5-4-**-    |
| 12                | 0.125"                 | 4                     | 70                      | 6.0         | 4.4  | 4.0  | 3.1  | 2.3  | 78S-004               | DRSA12B4-4-**-    |
| 12                | 0.125"                 | 5                     | 100                     | 12.0        | 9.4  | 8.6  | 7.2  | 6.0  | 78S-009               | DRSA12B5-4-**-    |
| 12                | 0.156"                 | 5                     | 100                     | 15.4        | 12.0 | 11.2 | 9.2  | 7.8  |                       | DRSA12C5-4-**-    |
| 12                | 0.188"                 | 5                     | 100                     | 18.6        | 14.6 | 13.6 | 11.2 | 9.5  |                       | DRSA12D5-4-**-    |
| 14                | 0.125"                 | 4                     | 40                      | 4.4         | 3.1  | 2.7  | 1.9  | 1.3  | 78S-005               | DRSA14B4-4-**-    |
| 14                | 0.125"                 | 5                     | 100                     | 9.2         | 7.0  | 6.4  | 5.2  | 4.4  | 78S-010               | DRSA14B5-4-**-    |
| 14                | 0.156"                 | 5                     | 100                     | 12.0        | 9.2  | 8.6  | 7.0  | 5.8  |                       | DRSA14C5-4-**-    |
| 14                | 0.188"                 | 5                     | 100                     | 14.8        | 11.4 | 10.6 | 8.8  | 7.4  |                       | DRSA14D5-4-**-    |
| 16                | 0.125"                 | 4                     | 40                      | 3.1         | 2.0  | 1.7  | 1.0  | -    | 78S-006               | DRSA16B4-4-**-    |
| 16                | 0.125"                 | 5                     | 100                     | 7.1         | 5.1  | 4.7  | 3.8  | 3.1  | 78S-011               | DRSA16B5-4-**-    |
| 16                | 0.156"                 | 5                     | 100                     | 9.4         | 7.0  | 6.5  | 5.3  | 4.4  | 78S-029               | DRSA16C5-4-**-    |
| 16                | 0.188"                 | 5                     | 100                     | 11.8        | 9.0  | 8.2  | 6.8  | 5.6  | 78S-030               | DRSA16D5-4-**-    |
| 16                | 0.156"                 | 6                     | 100                     | 19.2        | 15.4 | 14.4 | 11.8 | 10.0 |                       | DRSA16C6-4-**-    |
| 16                | 0.188"                 | 6                     | 100                     | 23.8        | 19.0 | 17.6 | 14.6 | 12.4 |                       | DRSA16D6-4-**-    |
| 18                | 0.125"                 | 5                     | 60                      | 5.4         | 3.6  | 3.3  | 2.6  | 2.0  | 78S-007               | DRSA18B5-4-**-    |
| 18                | 0.156"                 | 5                     | 100                     | 7.2         | 5.2  | 4.8  | 3.8  | 3.1  | 78S-031               | DRSA18C5-4-**-    |
| 18                | 0.188"                 | 5                     | 100                     | 9.2         | 6.8  | 6.2  | 5.1  | 4.2  | 78S-032               | DRSA18D5-4-**-    |
| 18                | 0.188"                 | 6                     | 100                     | 19.6        | 15.6 | 14.6 | 12.0 | 10.0 |                       | DRSA18D6-4-**-    |
| 20                | 0.125"                 | 5                     | 40                      | 3.8         | 2.3  | 2.1  | 1.5  | 1.1  | 78S-008               | DRSA20B5-4-**-    |
| 20                | 0.156"                 | 5                     | 60                      | 5.6         | 3.7  | 3.4  | 2.6  | 2.1  | 78S-033               | DRSA20C5-4-**-    |
| 20                | 0.188"                 | 5                     | 95                      | 7.2         | 5.0  | 4.6  | 3.7  | 3.0  | 78S-034               | DRSA20D5-4-**-    |
| 20                | 0.125"                 | 6                     | 100                     | 9.4         | 7.4  | 6.8  | 5.6  | 4.6  | 55-001                | DRSA20B6-4-**-    |
| 20                | 0.156"                 | 6                     | 100                     | 12.8        | 10.2 | 9.4  | 7.6  | 6.4  | 55-002                | DRSA20C6-4-**-    |
| 20                | 0.188"                 | 6                     | 100                     | 16.2        | 12.8 | 12.0 | 9.8  | 8.2  | 55-003                | DRSA20D6-4-**-    |
| 20                | 0.156"                 | 7                     | 100                     | 20.0        | 15.8 | 14.8 | 12.2 | 10.2 | 55-004                | DRSA20C7-4-**-    |
| 20                | 0.188"                 | 7                     | 100                     | 24.6        | 19.6 | 18.4 | 15.2 | 12.8 | 55-005                | DRSA20D7-4-**-    |
| 20                | 0.156"                 | 8                     | 100                     | 28.2        | 22.4 | 21.0 | 17.4 | 14.6 | 55-006                | DRSA20C8-4-**-    |
| 20                | 0.188"                 | 8                     | 100                     | 34.4        | 27.6 | 25.6 | 21.4 | 18.0 | 55-007                | DRSA20D8-4-**-    |
| 25                | 0.156"                 | 6                     | 100                     | 7.4         | 5.6  | 5.2  | 4.1  | 3.3  | 55-062                | DRSA25C6-4-**-    |
| 25                | 0.188"                 | 6                     | 100                     | 10.0        | 7.6  | 7.1  | 5.7  | 4.6  | 55-063                | DRSA25D6-4-**-    |
| 25                | 0.156"                 | 7                     | 100                     | 13.0        | 10.2 | 9.4  | 7.6  | 6.3  | 55-064                | DRSA25C7-4-**-    |
| 25                | 0.188"                 | 7                     | 100                     | 16.4        | 13.0 | 12.0 | 9.8  | 8.2  | 55-065                | DRSA25D7-4-**-    |
| 25                | 0.156"                 | 8                     | 100                     | 19.2        | 15.2 | 14.2 | 11.6 | 9.8  | 55-066                | DRSA25C8-4-**-    |
| 25                | 0.188"                 | 8                     | 100                     | 24.0        | 19.0 | 17.8 | 14.6 | 12.2 | 55-067                | DRSA25D8-4-**-    |
| 25                | 0.219"                 | 8                     | 100                     | 28.6        | 22.8 | 21.2 | 17.6 | 14.8 | 55-068                | DRSA25E8-4-**-    |
| 25                | 0.250"                 | 8                     | 100                     | 33.0        | 26.4 | 24.4 | 20.4 | 17.2 | 55-069                | DRSA25F8-4-**-    |
| 30                | 0.188"                 | 6                     | 60                      | 5.6         | 4.2  | 3.8  | 2.9  | 2.2  | 55-123                | DRSA30D6-4-**-    |
| 30                | 0.156"                 | 7                     | 100                     | 8.0         | 6.0  | 5.6  | 4.4  | 3.5  | 55-124                | DRSA30C7-4-**-    |
| 30                | 0.188"                 | 7                     | 100                     | 10.8        | 8.4  | 7.7  | 6.2  | 5.0  | 55-125                | DRSA30D7-4-**-    |
| 30                | 0.156"                 | 8                     | 100                     | 13.2        | 10.2 | 9.4  | 7.6  | 6.3  | 55-126                | DRSA30C8-4-**-    |
| 30                | 0.188"                 | 8                     | 100                     | 17.0        | 13.4 | 12.4 | 10.0 | 8.4  | 55-127                | DRSA30D8-4-**-    |
| 30                | 0.219"                 | 8                     | 100                     | 20.6        | 16.2 | 15.0 | 12.4 | 10.4 | 55-128                | DRSA30E8-4-**-    |
| 30                | 0.250"                 | 8                     | 100                     | 24.0        | 19.0 | 17.8 | 14.6 | 12.2 | 55-129                | DRSA30F8-4-**-    |
| 30                | 0.188"                 | 9                     | 100                     | 23.8        | 18.8 | 17.6 | 14.4 | 11.6 | 55-131                | DRSA30D9-4-**-    |
| 30                | 0.250"                 | 9                     | 100                     | 33.0        | 26.2 | 24.4 | 20.2 | 16.4 | 55-133                | DRSA30F9-4-**-    |
| 30                | 0.188"                 | 10                    | 100                     | 31.4        | 25.2 | 23.2 | 18.6 | 15.0 | 55-139                | DRSA30D1-4-**-    |
| 35                | 0.156"                 | 8                     | 100                     | 8.6         | 6.4  | 6.0  | 4.7  | 3.8  | 55-186                | DRSA35C8-4-**-    |
| 35                | 0.188"                 | 8                     | 100                     | 11.8        | 9.0  | 8.4  | 6.6  | 5.4  | 55-187                | DRSA35D8-4-**-    |
| 35                | 0.219"                 | 8                     | 100                     | 14.6        | 11.4 | 10.6 | 8.6  | 7.0  | 55-188                | DRSA35E8-4-**-    |
| 35                | 0.250"                 | 8                     | 100                     | 17.6        | 13.8 | 12.8 | 10.4 | 8.6  | 55-189                | DRSA35F8-4-**-    |
| 35                | 0.188"                 | 9                     | 100                     | 17.4        | 13.6 | 12.6 | 10.2 | 7.8  | 55-191                | DRSA35D9-4-**-    |
| 35                | 0.250"                 | 9                     | 100                     | 25.0        | 19.8 | 18.4 | 15.0 | 12.0 | 55-193                | DRSA35F9-4-**-    |
| 35                | 0.188"                 | 10                    | 100                     | 24.0        | 19.0 | 17.4 | 13.6 | 10.6 | 55-199                | DRSA35D1-4-**-    |
| 35                | 0.219"                 | 10                    | 100                     | 28.8        | 22.8 | 21.0 | 16.6 | 13.2 | 55-200                | DRSA35E1-4-**-    |
| 35                | 0.250"                 | 10                    | 100                     | 33.6        | 26.8 | 24.4 | 19.6 | 15.8 | 55-201                | DRSA35F1-4-**-    |
| 35                | 0.312"                 | 10                    | 100                     | 37.0        | 29.6 | 27.2 | 22.0 | 17.8 | 55-202                | DRSA35G1-4-**-    |
| 40                | 0.188"                 | 8                     | 80                      | 7.6         | 5.8  | 5.2  | 4.0  | 3.1  | 55-247                | DRSA40D8-4-**-    |
| 40                | 0.219"                 | 8                     | 100                     | 10.0        | 7.6  | 7.0  | 5.6  | 4.4  | 55-248                | DRSA40E8-4-**-    |
| 40                | 0.250"                 | 8                     | 100                     | 12.6        | 9.6  | 8.8  | 7.0  | 5.8  | 55-249                | DRSA40F8-4-**-    |
| 40                | 0.188"                 | 9                     | 100                     | 12.6        | 9.6  | 9.0  | 7.0  | 5.0  | 55-251                | DRSA40D9-4-**-    |
| 40                | 0.250"                 | 9                     | 100                     | 19.0        | 14.8 | 13.8 | 11.0 | 8.4  | 55-253                | DRSA40F9-4-**-    |
| 40                | 0.188"                 | 10                    | 100                     | 18.2        | 14.2 | 12.8 | 9.6  | 7.2  | 55-259                | DRSA40D1-4-**-    |
| 40                | 0.219"                 | 10                    | 100                     | 22.2        | 17.4 | 16.0 | 12.2 | 9.4  | 55-260                | DRSA40E1-4-**-    |
| 40                | 0.250"                 | 10                    | 100                     | 26.2        | 20.8 | 19.0 | 14.8 | 11.6 | 55-261                | DRSA40F1-4-**-    |
| 40                | 0.312"                 | 10                    | 100                     | 29.4        | 23.4 | 21.4 | 16.8 | 13.4 | 55-262                | DRSA40G1-4-**-    |

**Catalog Number System**

The catalog number for Dauer poles utilizes the following identification system.



**Catalog Number Example -**

**DRSA 30 D 8 - 4 - 01**

Round Straight Aluminum, 30' Mounting Height, .188" Wall Thickness, 8" Butt Diameter, No Taper, 4-Bolt Base, Satin Aluminum Finish.

**Wall Thickness**

- B = .125"
- C = .156"
- D = .188"
- E = .219"
- F = .250"
- G = .312"

**Butt Diameter**

- 4 = 4"
- 5 = 5"
- 6 = 6"
- 7 = 7"
- 8 = 8"
- 9 = 9"
- 1 = 10"

**Top Diameter**

- = No Taper

**Base Style**

4 = 4-Bolt Base

**Finish**

- O1 = Satin Aluminum
- BA = Black Powder Coat
- BH = White Powder Coat
- BM = Dark Bronze Powder Coat
- BV = Dark Green Powder Coat
- GC = Gray Powder Coat
- \*\* = Specify Finish

**EPA Notes:**

Effective Projected Area (EPA) in square feet. EPA's calculated using wind velocity (mph) indicated in accordance with 2009 AASHTO LTS-5 using a 25 year design life. Maximum EPA is based on the luminaire weight shown. Increased luminaire weight may reduce the maximum EPA. If weight is exceeded, or if other design life or code is required, please consult the factory.