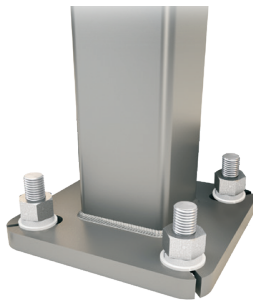


### POLE

Pole shaft shall be weldable-grade, cold-rolled, commercial quality carbon steel tubing conforming to ASTM A500 Grade B. Options include 11 gauge and 7 gauge. All welds shall conform to AWS D1.1 using ER70S-6 electrodes.

### BASE STYLE

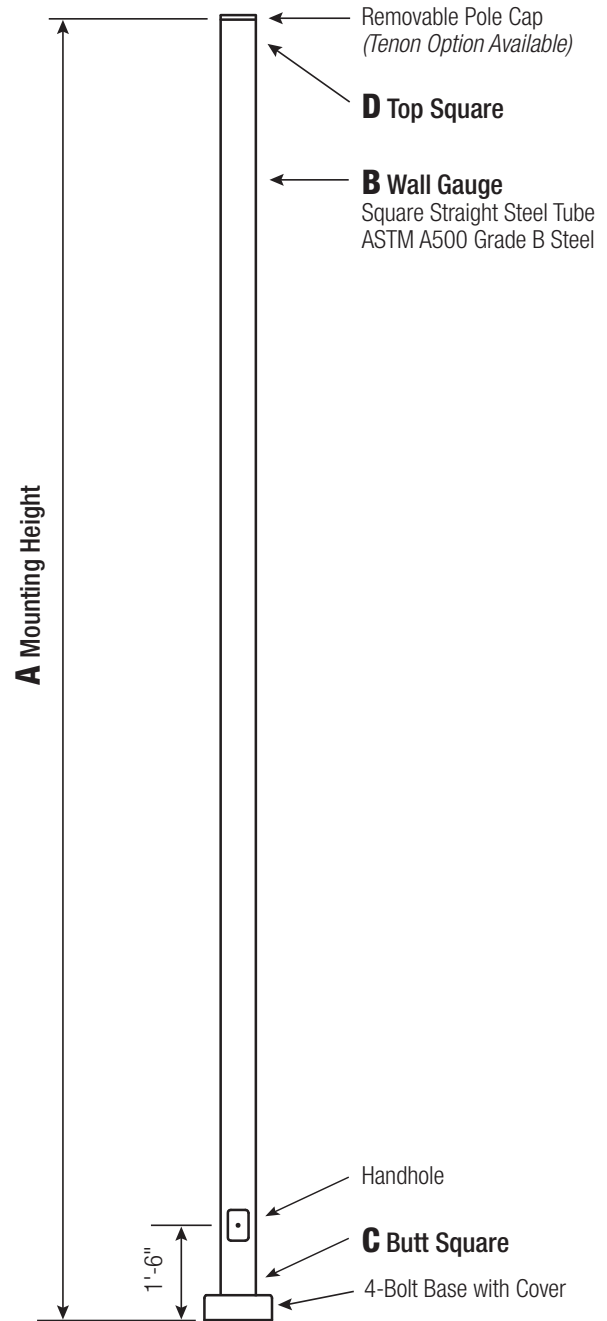
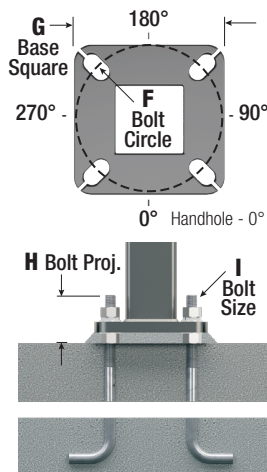
4-Bolt Steel Plate Base Flange of fabricated hot rolled carbon steel conforming to ASTM A36 or equivalent (36 ksi minimum yield) with 2-piece Base Cover and attaching hardware.



### ANCHORAGE

Anchorage Kit will include four (4) L-shaped Steel Anchor Bolts conforming to AASHTO M314-90 Grade 55. Ten inches (10") of threaded end will be galvanized per ASTM A153.

Kits will contain eight (8) Hex Nuts, four (4) Lock Washers, and eight (8) Flat Washers (all components Galvanized Steel). A paper bolt circle template will be provided.



Powder coated, galvanized or powder coated over galvanized finish per customer specification.

C BUTT SQ.	D TOP SQ.	F BOLT CIR. DIA.	G BASE SQ.	H BOLT PROJ.	I BOLT SIZE
4 (11 Gauge)	4	8 - 9	8	3.75	.75 x 17 x 3
4 (7 Gauge)	4	8 - 9	8	3.75	.75 x 30 x 3
5 (11 Gauge)*	5	10 - 12	11	3.75	.75 x 30 x 3
5 (7 Gauge)	5	10 - 12	11	4.875	1 x 36 x 4
6	6	11 - 13	12.5	4.875	1 x 36 x 4

\*Requires the use of oversized washers (provided).

Dimensions in Inches

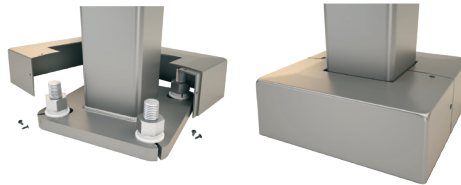
### HANDHOLE

Reinforced, 3" x 5" Handhole with cover, stainless steel screw and backbar. A grounding provision incorporating a tapped 1/2"-13NC hole will be provided.



### BASE COVER

Square ABS plastic Base Covers are standard on all DSSS poles specified in BA-Black, BM-Dark Bronze and BH-White. DSSS poles specified in all other colors will be manufactured of metal materials. Custom specification of DSSS square metal style Base Covers in BA, BM and BH powder coated finishes is available.



### VIBRATION DAMPER

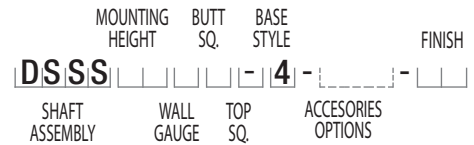
If determined necessary by Dauer, or if specified by the customer, a first and/or second mode vibration damper will be provided.

**WARNING:** Do not install light pole without luminaire.

A MTG. HGT.	B WALL GAUGE	C BUTT SQ.	TOTAL LUM. WEIGHT	MAXIMUM EPA						CATALOG NUMBER
				90	100	110	120	130	140	
10	11	4	320	25.2	20.0	18.6	15.3	12.7	10.6	DSSS10B4-4-**
12	11	4	285	20.6	16.2	14.9	12.1	9.9	8.2	DSSS12B4-4-**
14	11	4	255	17.0	13.2	12.1	9.7	7.8	6.3	DSSS14B4-4-**
15	11	4	245	15.5	11.9	10.9	8.6	6.8	5.4	DSSS15B4-4-**
15	7	4	305	23.4	18.4	17.0	13.8	11.4	9.4	DSSS15D4-4-**
16	11	4	235	14.0	10.7	9.7	7.6	5.9	4.6	DSSS16B4-4-**
16	7	4	290	21.5	16.8	15.5	12.5	10.2	8.4	DSSS16D4-4-**
18	11	4	215	11.3	8.4	7.6	5.7	4.3	3.2	DSSS18B4-4-**
18	7	4	265	18.0	13.9	12.8	10.2	8.2	6.6	DSSS18D4-4-**
20	11	4	200	9.1	6.5	5.8	4.2	2.9	1.9	DSSS20B4-4-**
20	11	5	235	14.1	10.3	9.2	6.8	4.9	3.4	DSSS20B5-4-**
20	7	4	240	15.1	11.5	10.5	8.2	6.5	5.0	DSSS20D4-4-**
20	7	5	330	26.3	20.3	18.6	14.8	11.9	9.6	DSSS20D5-4-**
22	11	4	200	7.2	4.9	4.2	2.8	1.7	0.8	DSSS22B4-4-**
22	11	5	215	11.4	8.0	7.1	4.9	3.2	1.9	DSSS22B5-4-**
22	7	4	225	12.7	9.5	8.6	6.6	5.0	3.7	DSSS22D4-4-**
22	7	5	300	22.4	17.1	15.6	12.2	9.6	7.5	DSSS22D5-4-**
25	11	4	200	4.7	2.8	2.2	1.0	-	-	DSSS25B4-4-**
25	11	5	200	8.0	5.1	4.3	2.4	1.0	-	DSSS25B5-4-**
25	7	4	205	9.7	6.9	6.2	4.4	3.1	2.0	DSSS25D4-4-**
25	7	5	260	17.7	13.2	11.9	9.0	6.7	4.9	DSSS25D5-4-**
28	11	4	200	2.6	1.0	-	-	-	-	DSSS28B4-4-**
28	11	5	200	5.1	2.6	1.9	-	-	-	DSSS28B5-4-**
28	7	4	200	7.1	4.8	4.1	2.6	1.5	-	DSSS28D4-4-**
28	7	5	235	13.9	9.9	8.8	6.3	4.3	2.7	DSSS28D5-4-**
30	11	5	200	3.4	1.1	-	-	-	-	DSSS30B5-4-**
30	7	4	200	5.6	3.5	2.9	1.6	-	-	DSSS30D4-4-**
30	7	5	215	11.7	8.0	7.0	4.7	2.9	1.5	DSSS30D5-4-**
30	7	6	275	19.2	13.7	12.2	8.7	5.9	3.8	DSSS30D6-4-**
35	7	5	200	6.9	4.0	3.1	1.2	-	-	DSSS35D5-4-**
35	7	6	220	12.6	8.0	6.8	3.9	1.6	-	DSSS35D6-4-**
39	7	6	200	8.2	4.2	3.1	0.6	-	-	DSSS39D6-4-**

### Catalog Number System

The catalog number for Dauer poles utilizes the following identification system.



### Catalog Number Example -

## DSSS 20 D 5 - 4 - BA

Square Straight Steel, 20' Mounting Height, 7 Gauge, 5" Butt Square, No Taper, 4-Bolt Base, Black Powder Coat Finish.

### EPA Notes:

Effective Projected Area (EPA) in square feet. EPA's calculated using wind velocity (mph) indicated in accordance with 2009 AASHTO LTS-5 using a 25-year design life. Maximum EPA is based on the luminaire weight shown. Increased luminaire weight may reduce the maximum EPA. If weight is exceeded, or if other design life or code is required, please consult the factory.

### Mounting Options

#### Side Drill Mount

Includes removable pole cap.

**NOTE:** A luminaire drilling template must be supplied at time of order.

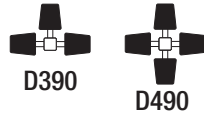
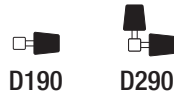


#### Tenon Mount

For Tenon Mount applications specify both Tenon diameter and length.



### Drill Mount Options



### Electrical Box



Box Only



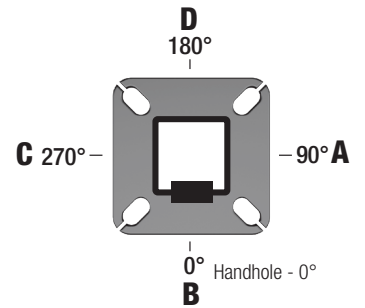
GF1  
Duplex GFI  
Receptacle  
with Cover



GF2  
Duplex GFI  
with In-Use  
Cover

**Note:** GFI Options must be specified in Accessories.

### Pole Orientation



## DSSS



DSSS - SQ. STRAIGHT STEEL POLE	HEIGHT	GAUGE	BUTT SQ.	TOP SQ.	BASE STYLE	MOUNTING OPTIONS	ELECTRICAL BOX*	ACCESSORIES/OPTIONS*	FINISH
	10 = 10' 12 = 12' 14 = 14' 16 = 16' 18 = 18' 20 = 20' 22 = 22' 25 = 25' 28 = 28' 30 = 30' 35 = 35' 39 = 39'	B = 11 Gauge  D = 7 Gauge	4 = 4" 5 = 5" 6 = 6"	"-" = No Taper	4 = 4-Bolt Base	<b>DRILL MOUNT</b> D000 - No Drilling D190 - Std. "A" D290 - Std. "A" & "D" D218 - Std. "A" & "C" D390 - Std. "A", "D", & "C" D490 - Std. "A", "B", "C", & "D" DCUS - Custom*  <b>TENON</b> T204 - 2-3/8" O.D. x 4" T304 - 2-7/8" O.D. x 4" T356 - 3-1/2" O.D. x 6" T406 - 4" O.D. x 6" TCUS - Custom Tenon**  * Specify Number and Orientation ** Specify O.D. and Height	FA - 30" Up, "D" FB - 30" Up, "B" FC - 30" Up, "A" FD - 30" Up, "C" FE - 36" Up, "D" FF - 36" Up, "B" FG - 36" Up, "A" FH - 36" Up, "C" FI - 24" Up, "D" FK - 24" Up, "A" FL - 24" Up, "C" FZ - Custom**  * GFI Receptacle Options Available (Specify in Accessories) ** Specify Height and Orientation	C12 - Threaded 1/2" Coupling** C34 - Threaded 3/4" Coupling** C10 - Threaded 1" Coupling** EHH - Extra Handhole** GF1 - Duplex GFI Receptacle (WR) with Cover GF2 - Duplex GFI (WR) with In-Use Cover LAB - Less Anchor Bolts LPC - Less Pole Cap PAB - Pre-shipped Anchor Bolts VD1 - Vib. Damper - 1st Mode VD2 - Vib. Damper - 2nd Mode  * Add all that apply (Example: CPL-LAB-VD1) ** Specify Location	<b>POWDER COAT COLORS</b> BA - Black Powder Coat BH - White Powder Coat BM - Dark Bronze Powder Coat BV - Dark Green Powder Coat GC - Gray Powder Coat XX - Special Colors*  <b>GALVANIZED</b> 1Q - Galvanized Only 1C - Black PC Over Galv. 1D - White PC Over Galv. 1B - D. Bronze PC Over Galv. 1Y - D. Green PC Over Galv. 1J - Gray PC Over Galv. XX - Special PC Over Galv.*  * Provide RAL # or Sample Color Chip