



FEATURES & SPECIFICATIONS

CONSTRUCTION

- Die-cast Aluminum housing with powder coat finish.
- UV Stabilized polycarbonate lens.
- Wattage and CCT selectable.
- Complete accessories for option

ELECTRICAL

- Lens cover : 110° ,90° ,
- 120-277V; 120-347V ; 277-480V
- Lens IK grade: IK08 for PC lens,
- LED source: Lumileds

APPLICATIONS

- Warehouse, factory, airport, other high bay applications.

INSTALLATION

- Hook, Yoke

DISTRIBUTION

- 90°

LISTING

- ETL&DLC

WARRANTY

- 5 years warranty

SPECS AT A GLANCE

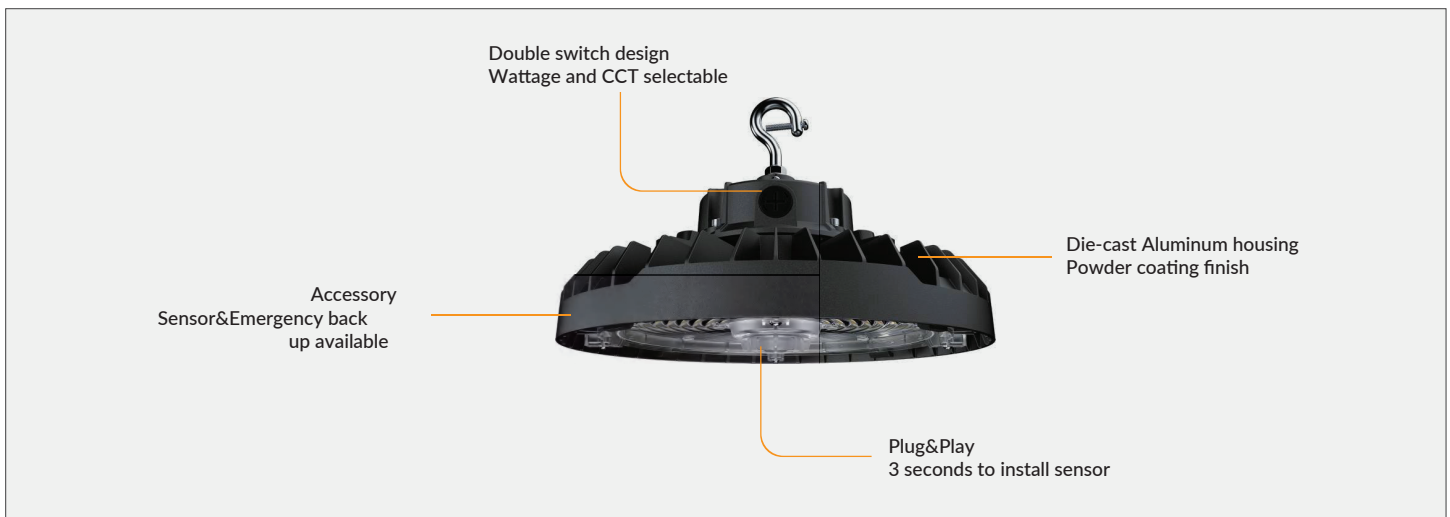
Configuration	LD-UFO12-150W/120W/100W L-(30/40/50)K-Y	LD-UFO12-240W/200W/150W L-(30/40/50)K-Y	LD-UFO12-300W/240W/200W L-(30/40/50)K-Y	LD-UFO12-150W/120W/100W H-(30/40/50)K-Y	LD-UFO12-240W/200W/150W H-(30/40/50)K-Y
CCT (K)	3000K/4000K/5000K Color Tunable				
Wattage (W)	100W/120W/150W watts adjustable	150W/200W/240W watts adjustable	200W/240W/300W watts adjustable	100W/120W/150W watts adjustable	150W/200W/240W watts adjustable
Lumens (lm)	100W=14000lm 120W=16800lm 150W=21000lm	150W=21000lm 200W=28000lm 240W=33600lm	200W=28000lm 240W=33600lm 300W=42000lm	100W=14000lm 120W=16800lm 150W=21000lm	150W=21000lm 200W=28000lm 240W=33600lm
Efficacy (LPW)	Up to 140lm/w				
CRI	>80				
Input Voltage	AC120-277V			AC277-480V	
Operating Temp	"-30 to 50"				
Certifications	ETL & DLC		DLC	ETL & DLC	
Warranty	5 year warranty				

*Nominal Wattage (Switchable)

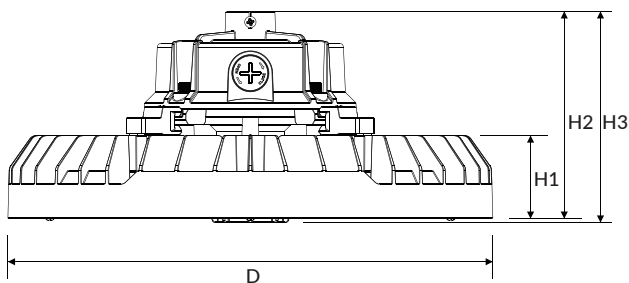
ORDERING INFORMATION

Model	Description	
LD-UFO11-150/120/100W -H-TCP(XX)-Y	UFO highbay, Power Switchable 100W/120W/150W, Color Switchable	3000K/4000K/5000K 120-277VAC
LD-UFO12-240W/200W/150W -L-(30/40/50)K-Y	UFO highbay, Power Switchable 150W/200W/240W, Color Switchable	3000K/4000K/5000K 120-277VAC
LD-UFO12-300W/240W/200W -L-(30/40/50)K-Y	UFO highbay, Power Switchable 200W/240W/300W, Color Switchable	3000K/4000K/5000K 120-277VAC
LD-UFO12-150W/120W/100W -H-(30/40/50)K-Y	UFO highbay, Power Switchable 100W/120W/150W, Color Switchable	3000K/4000K/5000K 277-480VAC
LD-UFO12-240W/200W/150W -H-(30/40/50)K-Y	UFO highbay, Power Switchable 150W/200W/240W, Color Switchable	3000K/4000K/5000K 277-480VAC

DETAIL



DIMENSIONS



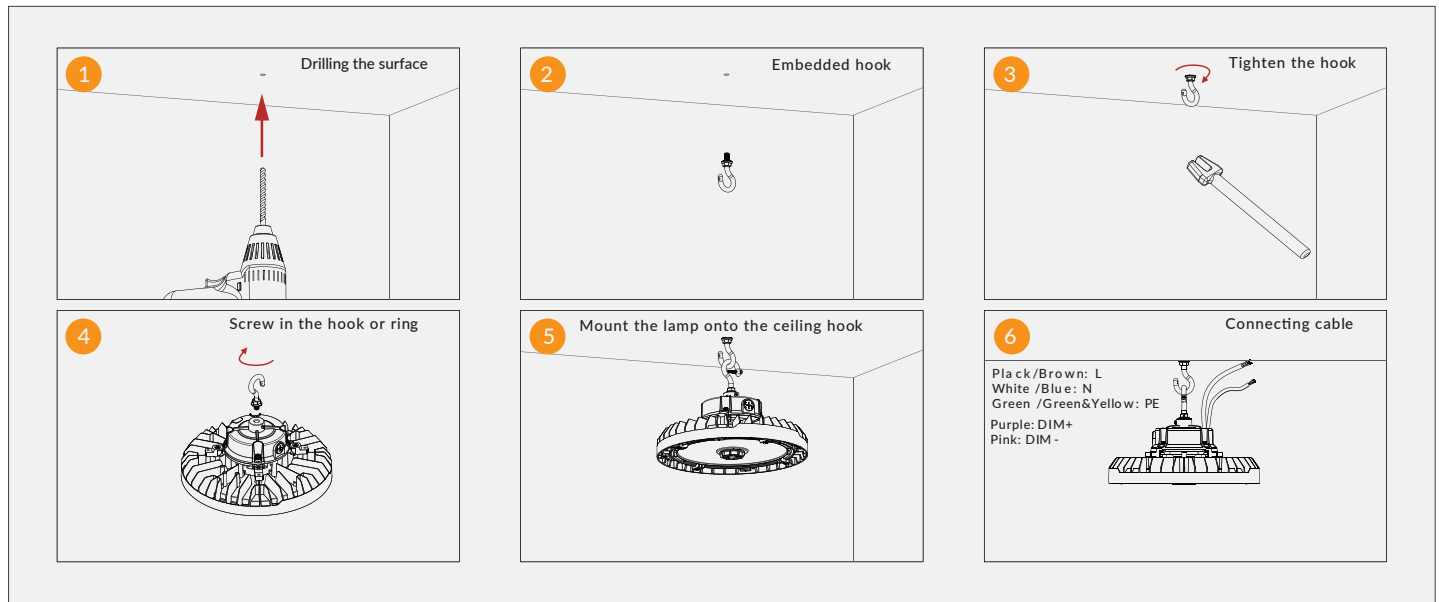
Power	D	H1	H2	H3
150W	Ø240mm 9.45"	50mm 1.97"	127mm 5.00"	129mm 5.08"
240W	Ø300mm 11.81"	50mm 1.97"	127mm 5.00"	129mm 5.08"
300W	Ø340mm 13.39"	50mm 1.97"	127mm 5.00"	129mm 5.08"
AC	Cable length Tin plated bare wire head, Exposed length 0.3m			
Control	Cable length Tin plated bare wire head, Exposed length 0.3m			

ACCESSORIES



INSTALLATION INSTRUCTIONS

Suspension installation with rain or hook



Surface mounting with bracket

<p>1 Drilling the surface</p>	<p>2 Embedded with expansion screws seat</p>	<p>3 Tap the expansion screw seat</p>
<p>4 The central shaft screw is connected to the installation interface through the bracket</p>	<p>5 Tighten the center shaft screw</p>	<p>6 Put the screw through the bracket and screw it on the swelling screw seat</p>
<p>7 Tighten the screw</p>	<p>8 Loosen the bracket screws and adjust the lamp to the appropriate angle</p>	<p>9 Connecting cable</p> <p>Black/Brown: L White/Blue: N Green/Green&Yellow: PE Purple: DIM+ Pink: DIM-</p>

Pipe installation (Factory)

<p>1 Screw Cross through the converter to connect to the installation interface</p> <p>Converter specifications can be selected as G1/2 or G3/4</p>	<p>2 Tighten the center shaft screws tightly</p>	<p>3 Align the lamp converter with the threaded pipe orifice</p>
<p>4 Rotate the lamp until it is tightened</p>	<p>5 Tighten the auxiliary screws on the side of the converter</p>	<p>6 Connecting cable</p> <p>Black/Brown: L White/Blue: N Green/Green&Yellow: PE Purple: DIM+ Pink: DIM-</p>

PACKING INFO

Power	L /inch	W /inch	H /inch	QTY/ctn	N/G.W
150W	265mm/10.43"	265mm/10.43"	290mm/11.42"	2pcs	2.0kg
					4.5kg
240W	325mm/12.8"	325mm/12.8"	350mm/13.78"	2pcs	2.8kg
					6.4kg
300W	360mm/14.17"	365mm/14.37"	390mm/15.35"	2pcs	3.3kg
					7.5kg