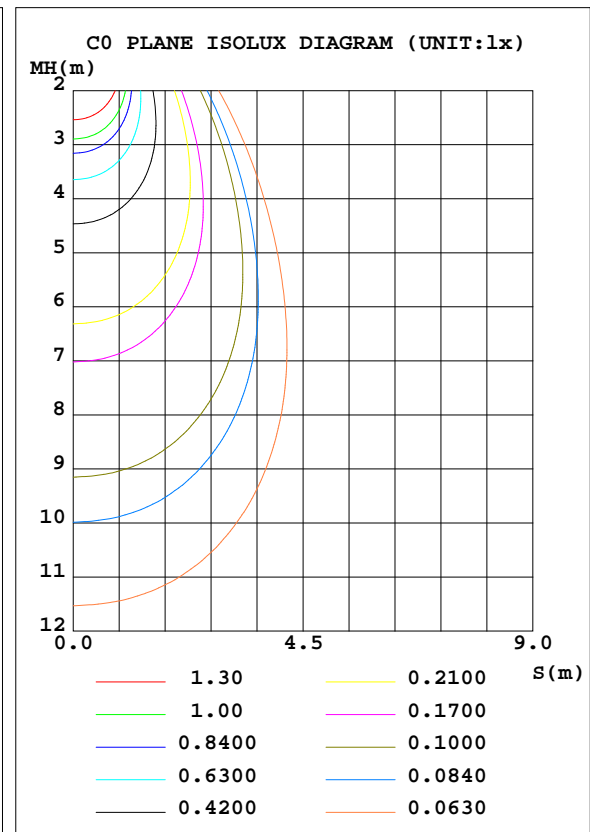
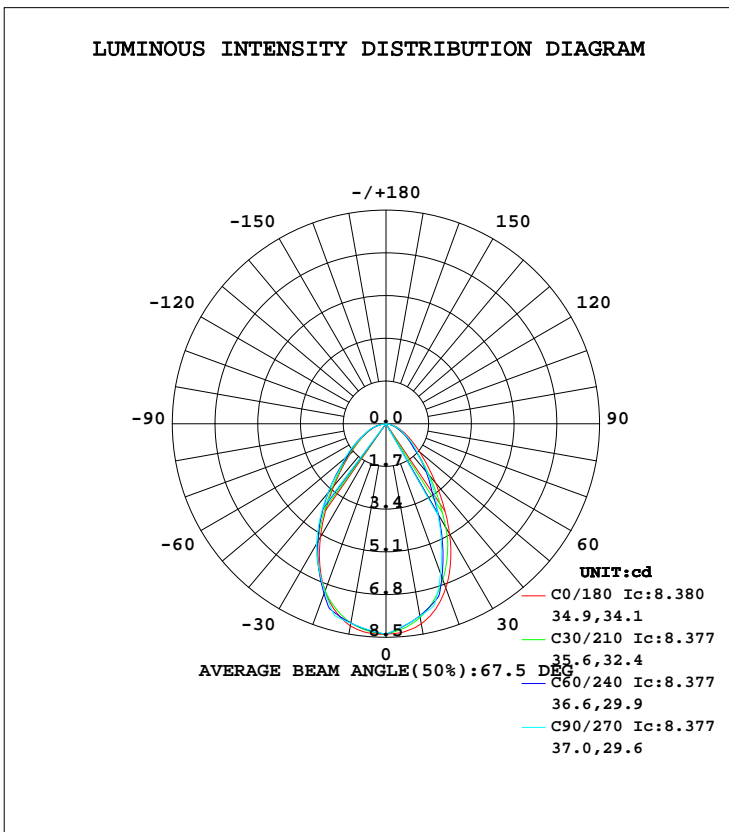


**LUMINAIRE PHOTOMETRIC TEST REPORT**

Test:U:11.95V I:0.1333A P:0.8917W PF:0.5599 Lamp Flux:180x1 lm		
NAME: 489872-2700K HENDRIX	TYPE:489872-2700K HENDRIX	WEIGHT:
SPEC.:	DIM.:	SERIAL No.:
MFR.:	SUR.:	PROTECTION ANGLE:

DATA OF LAMP		PHOTOMETRIC DATA Eff: 49.70 lm/W			
MODEL	489872-2700K HENDRIX	I <sub>max</sub> (cd)	8.380	S/MH(C0/180)	1.01
NOMINAL POWER(W)	1	LOR(%)	24.6	S/MH(C90/270)	1.03
RATED VOLTAGE(V)	12	TOTAL FLUX(lm)	12.310	η UP, DN(C0-180)	0.0,11.4
NOMINAL FLUX(lm)	50	CIE CLASS	DIRECT	η UP, DN(C180-360)	0.0,13.2
LAMPS INSIDE	1	η up(%)	0.0	CIBSE SHR NOM	1.00
TEST VOLTAGE(V)	12	η down(%)	24.6	CIBSE SHR MAX	1.05



C Range: 0 - 360DEG  
 C Interval: 5.0DEG  
 Test Speed: HIGH  
 Temperature:20DEG  
 Operators:Y  
 Test Date:2026-05-18

γ Range: 0 - 90DEG  
 γ Interval: 0.5DEG  
 Test System:EVERFINE GO-2000B\_V1 SYSTEM V2.0.291  
 Humidity:65.0%  
 Test Distance:8.750m [K=1.0000]  
 Remarks:

**ZONAL FLUX DIAGRAM**

ZONAL FLUX DIAGRAM:

γ	C0	C45	C90	C135	C180	C225	C270	C315	γ	Φ zone	Φ total	lum, lamp
5	8.314	8.119	8.076	8.150	8.351	8.252	8.221	8.227	0- 5	0.1976	0.1976	1.61,0.40
10	8.086	7.772	7.775	7.836	8.166	8.037	8.065	8.000	5- 10	0.5775	0.7751	6.3,1.55
15	7.637	7.299	7.474	7.406	7.738	7.716	7.909	7.652	10- 15	0.9206	1.696	13.8,3.39
20	6.961	6.704	6.350	6.863	7.086	7.277	7.118	7.184	15- 20	1.192	2.888	23.5,5.78
25	6.083	5.594	5.227	5.834	6.235	6.381	6.328	6.269	20- 25	1.343	4.231	34.4,8.46
30	5.061	4.420	4.103	4.745	5.221	5.374	5.537	5.259	25- 30	1.376	5.607	45.5,11.2
35	4.007	3.318	3.353	3.718	4.176	4.370	4.568	4.268	30- 35	1.307	6.914	56.2,13.8
40	3.066	2.394	2.604	2.833	3.226	3.439	3.600	3.354	35- 40	1.170	8.084	65.7,16.2
45	2.313	1.862	1.854	2.227	2.455	2.666	2.631	2.588	40- 45	0.9945	9.078	73.7,18.2
50	1.743	1.415	1.518	1.708	1.867	2.020	2.136	1.954	45- 50	0.8194	9.898	80.4,19.8
55	1.323	1.048	1.183	1.274	1.428	1.501	1.641	1.444	50- 55	0.6781	10.58	85.9,21.2
60	1.006	0.8060	0.8478	1.007	1.091	1.173	1.146	1.120	55- 60	0.5496	11.13	90.4,22.3
65	0.7483	0.5816	0.6674	0.7644	0.8248	0.8835	0.9138	0.8336	60- 65	0.4327	11.56	93.9,23.1
70	0.5349	0.3984	0.4870	0.5566	0.5995	0.6450	0.6816	0.6038	65- 70	0.3358	11.89	96.6,23.8
75	0.3510	0.2503	0.3066	0.3783	0.4037	0.4501	0.4493	0.4198	70- 75	0.2433	12.14	98.6,24.3
80	0.1848	0.1042	0	0.1827	0.2326	0.2285	0	0.2128	75- 80	0.1381	12.28	99.7,24.6
85	0.0314	0	0	0	0.0013	0	0	0	80- 85	0.0332	12.31	100,24.6
90	0	0	0	0	0	0	0	0	85- 90	0.0018	12.31	100,24.6
95									90- 95			
100									95-100			
105									100-105			
110									105-110			
115									110-115			
120									115-120			
125									120-125			
130									125-130			
135									130-135			
140									135-140			
145									140-145			
150									145-150			
155									150-155			
160									155-160			
165									160-165			
170									165-170			
175									170-175			
180									175-180			
DEG	LUMINOUS INTENSITY:cd								UNIT:lm			

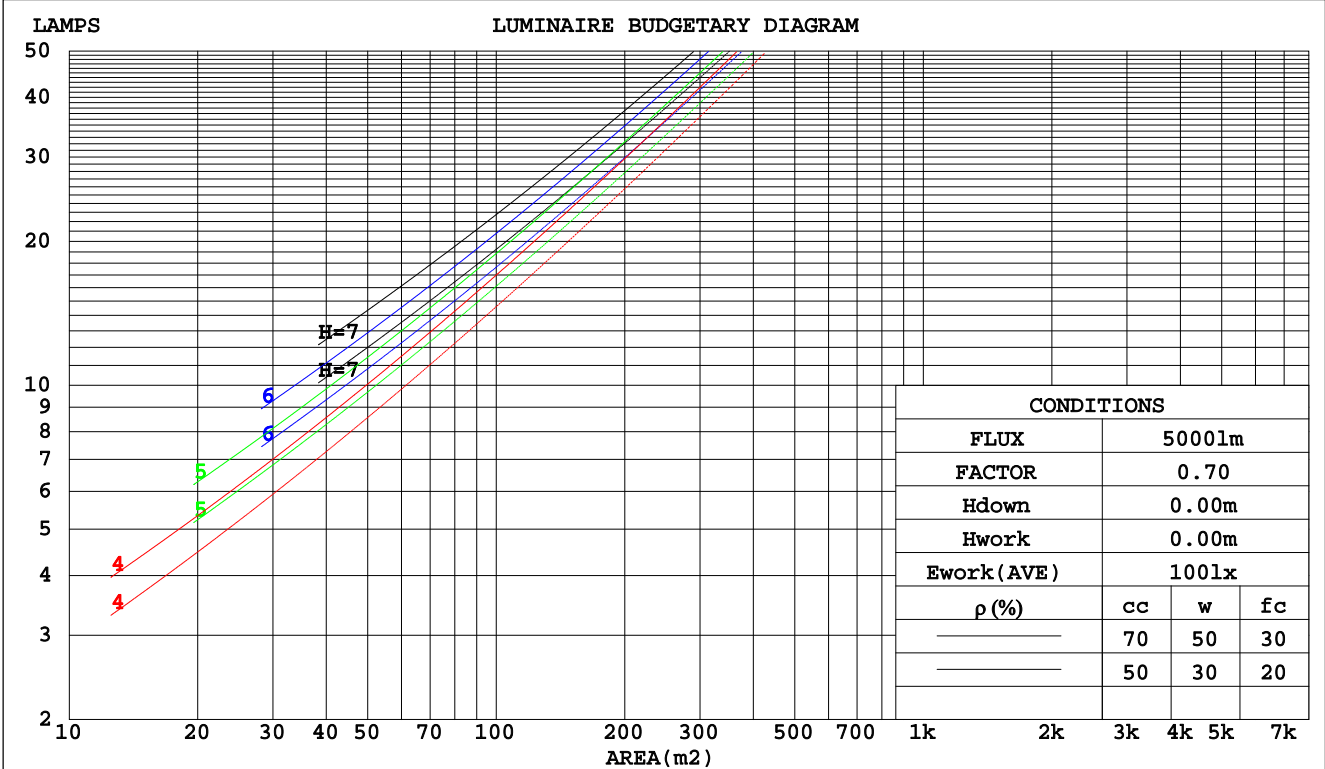
C Range: 0 - 360DEG  
 C Interval: 5.0DEG  
 Test Speed: HIGH  
 Temperature:20DEG  
 Operators:Y  
 Test Date:2026-05-18

γ Range: 0 - 90DEG  
 γ Interval: 0.5DEG  
 Test System:EVERFINE GO-2000B\_V1 SYSTEM V2.0.291  
 Humidity:65.0%  
 Test Distance:8.750m [K=1.0000]  
 Remarks:

**CU AND LUMINAIRE BUDGETARY ESTIMATE DIAGRAM**

Test:U:11.95V I:0.1333A P:0.8917W PF:0.5599 Lamp Flux:180x1 lm		
NAME: 489872-2700K HENDRIX	TYPE:489872-2700K HENDRIX	WEIGHT:
SPEC.:	DIM.:	SERIAL No.:
MFR.:	SUR.:	PROTECTION ANGLE:

pcc	80%			70%			50%			30%			10%			0
pw	50%	30%	10%	50%	30%	10%	50%	30%	10%	50%	30%	10%	50%	30%	10%	0
pfc	20%			20%			20%			20%			20%			0
RCR	RCR:Room Cavity Ratio						Coefficients of Utilization(CU)									
0.0	.29	.29	.29	.29	.29	.29	.27	.27	.27	.26	.26	.26	.25	.25	.25	.25
1.0	.26	.26	.25	.26	.25	.25	.25	.24	.24	.24	.23	.23	.23	.23	.22	.22
2.0	.24	.22	.21	.23	.22	.21	.23	.22	.21	.22	.21	.20	.21	.20	.20	.19
3.0	.22	.20	.19	.21	.20	.18	.20	.19	.18	.20	.19	.18	.19	.18	.18	.17
4.0	.20	.18	.16	.19	.18	.16	.19	.17	.16	.18	.17	.16	.18	.17	.16	.15
5.0	.18	.16	.15	.18	.16	.15	.17	.16	.14	.17	.15	.14	.16	.15	.14	.14
6.0	.16	.15	.13	.16	.14	.13	.16	.14	.13	.15	.14	.13	.15	.14	.13	.12
7.0	.15	.13	.12	.15	.13	.12	.15	.13	.12	.14	.13	.12	.14	.13	.12	.11
8.0	.14	.12	.11	.14	.12	.11	.14	.12	.11	.13	.12	.11	.13	.12	.11	.10
9.0	.13	.11	.10	.13	.11	.10	.13	.11	.10	.12	.11	.10	.12	.11	.10	.10
10.0	.12	.10	.09	.12	.10	.09	.12	.10	.09	.12	.10	.09	.11	.10	.09	.09



C Range: 0 - 360DEG  
 C Interval: 5.0DEG  
 Test Speed: HIGH  
 Temperature:20DEG  
 Operators:Y  
 Test Date:2026-05-18

γ Range: 0 - 90DEG  
 γ Interval: 0.5DEG  
 Test System:EVERFINE GO-2000B\_V1 SYSTEM V2.0.291  
 Humidity:65.0%  
 Test Distance:8.750m [K=1.0000]  
 Remarks:

**WEC AND CCEC**

Test:U:11.95V I:0.1333A P:0.8917W PF:0.5599 Lamp Flux:180x1 lm		
NAME: 489872-2700K HENDRIX	TYPE:489872-2700K HENDRIX	WEIGHT:
SPEC.:	DIM.:	SERIAL No.:
MFR.:	SUR.:	PROTECTION ANGLE:

ρcc	80%			70%			50%			30%			10%			0
ρw	50%	30%	10%	50%	30%	10%	50%	30%	10%	50%	30%	10%	50%	30%	10%	0
ρfc	20%			20%			20%			20%			20%			0
<b>RCR</b>	<b>RCR:Room Cavity Ratio</b>						<b>Wall Exitance Coefficients(WEC)</b>									
0.0																
1.0	.059	.034	.011	.057	.033	.010	.054	.031	.010	.051	.029	.009	.048	.028	.009	
2.0	.057	.031	.010	.055	.031	.009	.053	.029	.009	.050	.028	.009	.048	.027	.009	
3.0	.054	.029	.009	.052	.028	.008	.050	.027	.008	.048	.026	.008	.046	.025	.008	
4.0	.050	.026	.008	.049	.026	.008	.047	.025	.007	.045	.024	.007	.043	.024	.007	
5.0	.047	.024	.007	.046	.024	.007	.045	.023	.007	.043	.023	.007	.041	.022	.007	
6.0	.045	.022	.006	.044	.022	.006	.042	.022	.006	.040	.021	.006	.039	.021	.006	
7.0	.042	.021	.006	.041	.021	.006	.040	.020	.006	.038	.020	.006	.037	.019	.006	
8.0	.040	.019	.005	.039	.019	.005	.038	.019	.005	.036	.018	.005	.035	.018	.005	
9.0	.037	.018	.005	.037	.018	.005	.036	.018	.005	.035	.017	.005	.034	.017	.005	
10.0	.036	.017	.005	.035	.017	.005	.034	.017	.005	.033	.016	.005	.032	.016	.005	

ρcc	80%			70%			50%			30%			10%			0
ρw	50%	30%	10%	50%	30%	10%	50%	30%	10%	50%	30%	10%	50%	30%	10%	0
ρfc	20%			20%			20%			20%			20%			0
<b>RCR</b>	<b>RCR:Room Cavity Ratio</b>						<b>Ceiling Cavity Exitance Coefficients(CCEC)</b>									
0.0	.047	.047	.047	.040	.040	.040	.027	.027	.027	.016	.016	.016	.005	.005	.005	
1.0	.043	.039	.034	.037	.033	.030	.025	.023	.021	.015	.013	.012	.005	.004	.004	
2.0	.040	.033	.026	.035	.028	.022	.024	.019	.016	.014	.011	.009	.004	.004	.003	
3.0	.038	.028	.020	.033	.024	.017	.022	.017	.012	.013	.010	.007	.004	.003	.002	
4.0	.036	.025	.016	.031	.021	.014	.021	.015	.010	.012	.009	.006	.004	.003	.002	
5.0	.034	.022	.013	.029	.019	.011	.020	.013	.008	.012	.008	.005	.004	.003	.002	
6.0	.032	.020	.011	.028	.017	.009	.019	.012	.007	.011	.007	.004	.004	.002	.001	
7.0	.031	.018	.009	.026	.016	.008	.018	.011	.006	.011	.006	.003	.003	.002	.001	
8.0	.029	.017	.008	.025	.014	.007	.017	.010	.005	.010	.006	.003	.003	.002	.001	
9.0	.028	.015	.007	.024	.013	.006	.017	.009	.004	.010	.006	.003	.003	.002	.001	
10.0	.027	.014	.006	.023	.012	.005	.016	.009	.004	.009	.005	.002	.003	.002	.001	

C Range: 0 - 360DEG  
 C Interval: 5.0DEG  
 Test Speed: HIGH  
 Temperature:20DEG  
 Operators:Y  
 Test Date:2026-05-18

γ Range: 0 - 90DEG  
 γ Interval: 0.5DEG  
 Test System:EVERFINE GO-2000B\_V1 SYSTEM V2.0.291  
 Humidity:65.0%  
 Test Distance:8.750m [K=1.0000]  
 Remarks:

**UGR(Unified Glare Rating) Table**

Test:U:11.95V I:0.1333A P:0.8917W PF:0.5599 Lamp Flux:180x1 lm										
NAME: 489872-2700K HENDRIX					TYPE:489872-2700K HENDRIX			WEIGHT:		
SPEC.:					DIM.:			SERIAL No.:		
MFR.:					SUR.:			PROTECTION ANGLE:		
ceiling/cavity	0.7	0.7	0.5	0.5	0.3	0.7	0.7	0.5	0.5	0.3
walls	0.5	0.3	0.5	0.3	0.3	0.5	0.3	0.5	0.3	0.3
working plane	0.2	0.2	0.2	0.2	0.2	0.2	0.2	0.2	0.2	0.2
Room dimensions	Viewed crosswise					Viewed endwise				
x = 2H y = 2H	-4.6	-3.3	-4.3	-3.1	-2.9	-5.1	-3.8	-4.8	-3.7	-3.5
3H	-3.8	-2.6	-3.5	-2.4	-2.2	-4.2	-3.0	-3.9	-2.8	-2.6
4H	-3.5	-2.4	-3.2	-2.2	-1.9	-3.9	-2.8	-3.6	-2.5	-2.3
6H	-3.4	-2.3	-3.1	-2.1	-1.8	-3.9	-2.8	-3.6	-2.6	-2.3
8H	-3.4	-2.4	-3.1	-2.1	-1.8	-3.9	-2.9	-3.6	-2.7	-2.4
12H	-3.4	-2.5	-3.1	-2.2	-1.9	-4.0	-3.0	-3.6	-2.7	-2.5
4H 2H	-4.4	-3.3	-4.1	-3.0	-2.8	-4.8	-3.7	-4.5	-3.5	-3.3
3H	-3.5	-2.5	-3.1	-2.2	-1.9	-3.8	-2.8	-3.4	-2.5	-2.3
4H	-3.1	-2.3	-2.8	-2.0	-1.6	-3.4	-2.5	-3.0	-2.2	-1.9
6H	-3.0	-2.2	-2.6	-1.9	-1.5	-3.3	-2.6	-2.9	-2.2	-1.9
8H	-3.0	-2.3	-2.6	-1.9	-1.5	-3.4	-2.7	-3.0	-2.3	-1.9
12H	-3.0	-2.4	-2.6	-2.0	-1.6	-3.4	-2.8	-3.0	-2.4	-2.0
8H 4H	-3.1	-2.4	-2.7	-2.0	-1.6	-3.3	-2.6	-2.9	-2.2	-1.9
6H	-2.9	-2.3	-2.5	-1.9	-1.5	-3.2	-2.7	-2.8	-2.3	-1.8
8H	-2.9	-2.4	-2.4	-2.0	-1.5	-3.3	-2.8	-2.8	-2.4	-1.9
12H	-2.9	-2.5	-2.5	-2.0	-1.6	-3.3	-2.9	-2.9	-2.5	-2.0
12H 4H	-3.1	-2.5	-2.7	-2.1	-1.7	-3.3	-2.7	-2.9	-2.3	-1.9
6H	-2.9	-2.4	-2.5	-2.0	-1.5	-3.3	-2.8	-2.8	-2.3	-1.9
8H	-2.9	-2.5	-2.4	-2.0	-1.6	-3.3	-2.9	-2.8	-2.4	-2.0
Variations with the observer position at spacings:										
S = 1.0H	+ 0.6 / - 0.7					+ 0.5 / - 0.6				
1.5H	+ 1.0 / - 0.8					+ 0.5 / - 0.3				
2.0H	+ 1.6 / - 1.4					+ 0.9 / - 1.0				

CIE Pub.117 Corrected 50.00 lm Total Lamp Luminous Flux. (8log(F/F0) = -10.4)

C Range: 0 - 360DEG  
C Interval: 5.0DEG  
Test Speed: HIGH  
Temperature:20DEG  
Operators:Y  
Test Date:2026-05-18

γ Range: 0 - 90DEG  
γ Interval: 0.5DEG  
Test System:EVERFINE GO-2000B\_V1 SYSTEM V2.0.291  
Humidity:65.0%  
Test Distance:8.750m [K=1.0000]  
Remarks:

**UTILIZATION FACTORS TABLE**

Test:U:11.95V I:0.1333A P:0.8917W PF:0.5599 Lamp Flux:180x1 lm		
NAME: 489872-2700K HENDRIX	TYPE:489872-2700K HENDRIX	WEIGHT:
SPEC.:	DIM.:	SERIAL No.:
MFR.:	SUR.:	PROTECTION ANGLE:

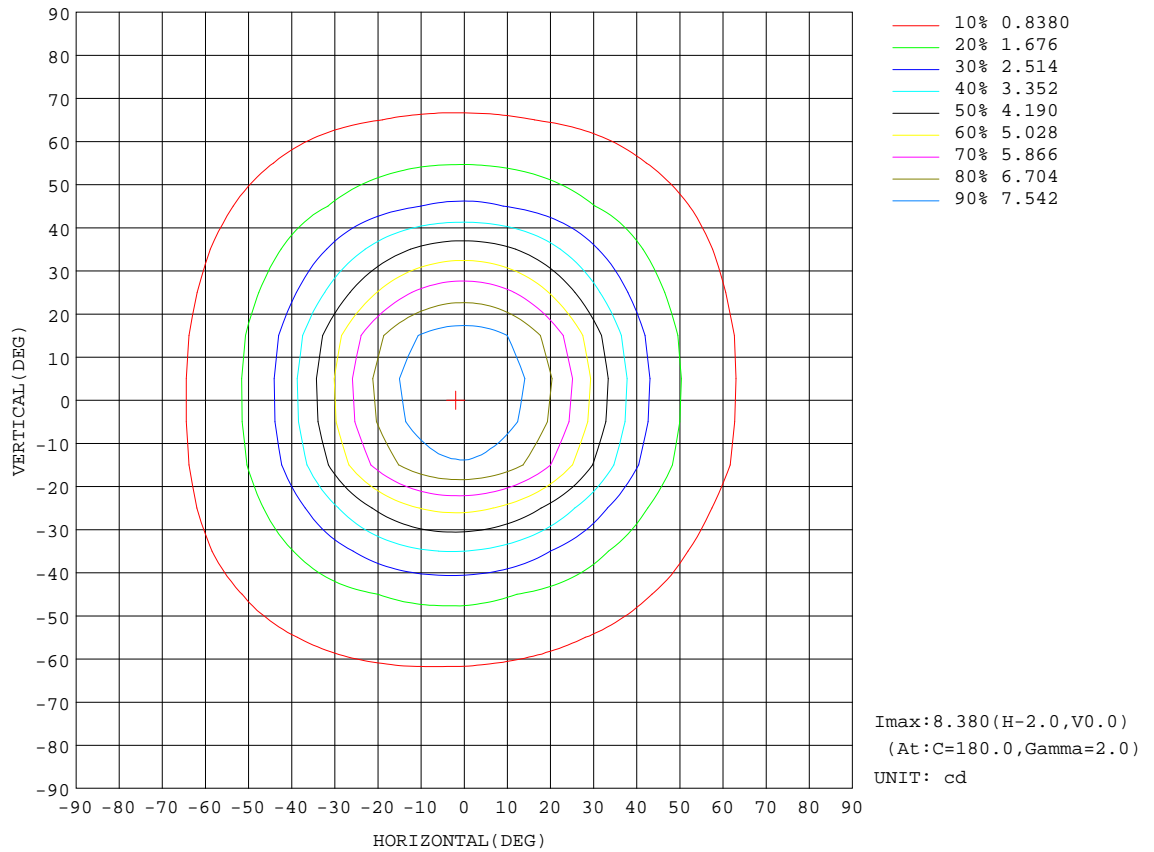
REFLECTANCE										
Ceiling	0.8	0.8	0.8	0.7	0.7	0.7	0.5	0.5	0.5	0
Walls	0.7	0.5	0.3	0.7	0.5	0.3	0.7	0.5	0.3	0
Working plane	0.2	0.2	0.2	0.2	0.2	0.2	0.2	0.2	0.2	0
ROOM INDEX	UTILIZATION FACTORS(PERCENT) $k(RI) \times RCR = 5$									
k = 0.60	17	15	14	17	15	14	17	15	14	12
0.80	20	17	16	19	17	16	19	17	16	14
1.00	21	19	18	21	19	18	21	19	18	16
1.25	23	21	19	22	21	19	22	20	19	18
1.50	24	22	21	23	22	21	23	21	20	19
2.00	25	23	22	25	23	22	24	23	22	20
2.50	26	24	23	25	24	23	24	23	22	21
3.00	26	25	24	26	25	24	25	24	23	21
4.00	27	26	25	27	26	25	26	25	24	22
5.00	28	27	26	27	26	26	26	25	25	23
ROOM INDEX	UF(total)									Direct
According to DIN EN 13032-2 2004			Suspended				SHRNOM = 1.25			

C Range: 0 - 360DEG  
 C Interval: 5.0DEG  
 Test Speed: HIGH  
 Temperature:20DEG  
 Operators:Y  
 Test Date:2026-05-18

$\gamma$  Range: 0 - 90DEG  
 $\gamma$  Interval: 0.5DEG  
 Test System:EVERFINE GO-2000B\_V1 SYSTEM V2.0.291  
 Humidity:65.0%  
 Test Distance:8.750m [K=1.0000]  
 Remarks:

**ISOCANDELA DIAGRAM**

Test:U:11.95V I:0.1333A P:0.8917W PF:0.5599 Lamp Flux:180x1 lm		
NAME: 489872-2700K HENDRIX	TYPE:489872-2700K HENDRIX	WEIGHT:
SPEC.:	DIM.:	SERIAL No.:
MFR.:	SUR.:	PROTECTION ANGLE:

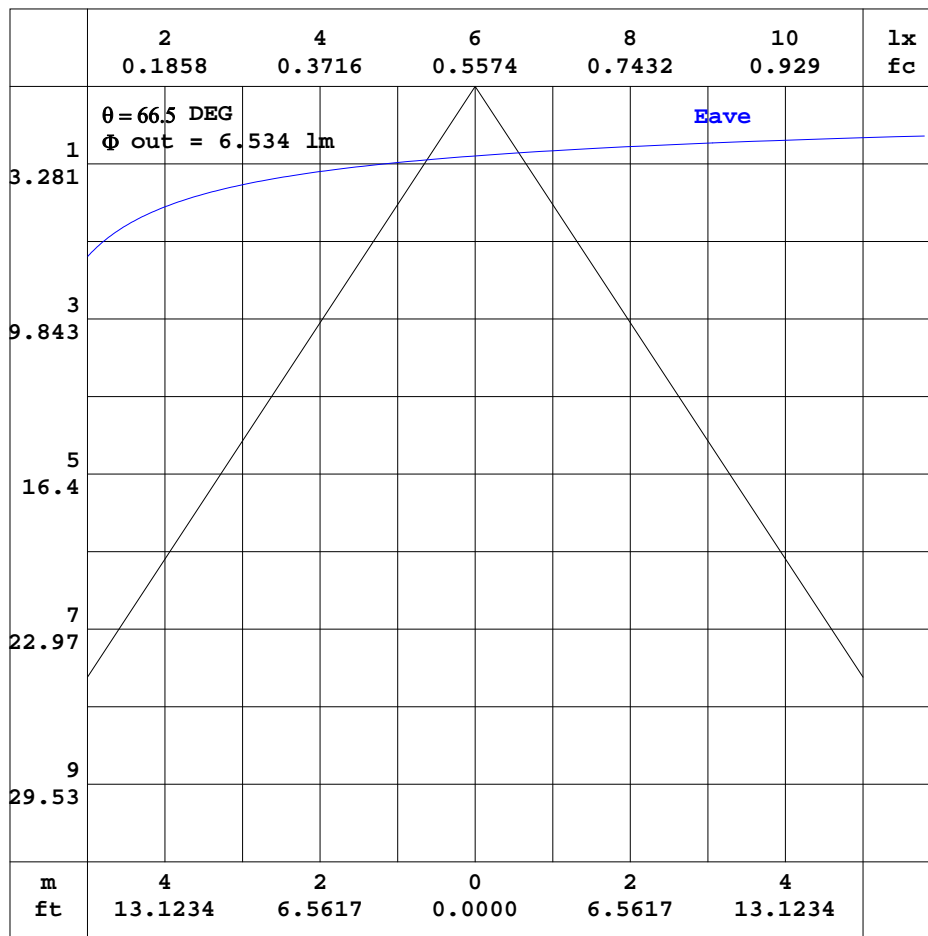


C Range: 0 - 360DEG  
 C Interval: 5.0DEG  
 Test Speed: HIGH  
 Temperature: 20DEG  
 Operators: Y  
 Test Date: 2026-05-18

γ Range: 0 - 90DEG  
 γ Interval: 0.5DEG  
 Test System: EVERFINE GO-2000B\_V1 SYSTEM V2.0.291  
 Humidity: 65.0%  
 Test Distance: 8.750m [K=1.0000]  
 Remarks:

AAI CURVES

Test:U:11.95V I:0.1333A P:0.8917W PF:0.5599 Lamp Flux:180x1 lm		
NAME: 489872-2700K HENDRIX	TYPE:489872-2700K HENDRIX	WEIGHT:
SPEC.:	DIM.:	SERIAL No.:
MFR.:	SUR.:	PROTECTION ANGLE:



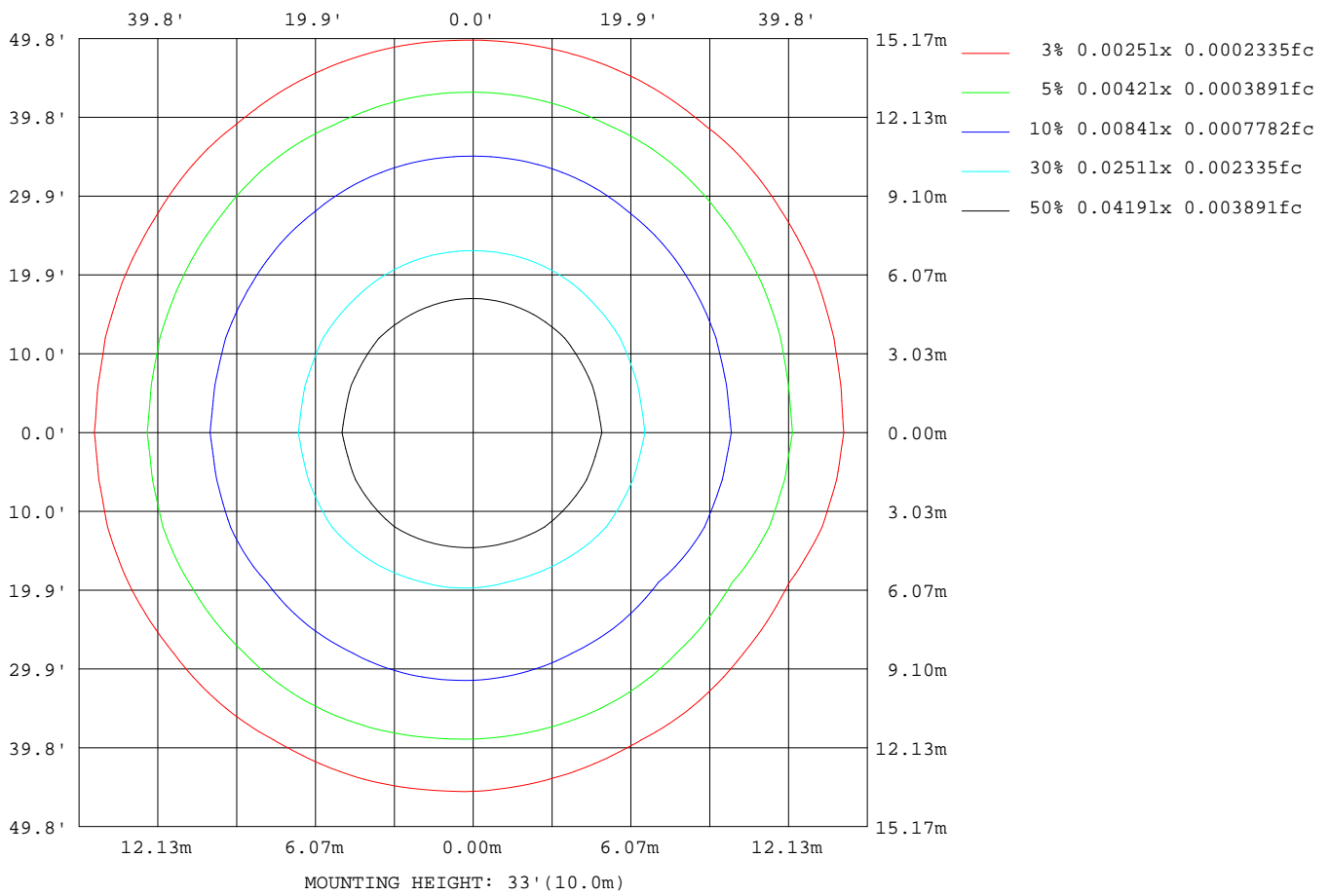
Note:The Curves indicate the illuminated area and the average illumination when the luminaire is at different distance.

C Range: 0 - 360DEG  
 C Interval: 5.0DEG  
 Test Speed: HIGH  
 Temperature:20DEG  
 Operators:Y  
 Test Date:2026-05-18

$\gamma$  Range: 0 - 90DEG  
 $\gamma$  Interval: 0.5DEG  
 Test System:EVERFINE GO-2000B\_V1 SYSTEM V2.0.291  
 Humidity:65.0%  
 Test Distance:8.750m [K=1.0000]  
 Remarks:

**ISOLUX DIAGRAM**

Test:U:11.95V I:0.1333A P:0.8917W PF:0.5599 Lamp Flux:180x1 lm		
NAME: 489872-2700K HENDRIX	TYPE:489872-2700K HENDRIX	WEIGHT:
SPEC.:	DIM.:	SERIAL No.:
MFR.:	SUR.:	PROTECTION ANGLE:



C Range: 0 - 360DEG  
 C Interval: 5.0DEG  
 Test Speed: HIGH  
 Temperature:20DEG  
 Operators:Y  
 Test Date:2026-05-18

γ Range: 0 - 90DEG  
 γ Interval: 0.5DEG  
 Test System:EVERFINE GO-2000B\_V1 SYSTEM V2.0.291  
 Humidity:65.0%  
 Test Distance:8.750m [K=1.0000]  
 Remarks:

**LED Avg.L Report**

Test:U:11.95V I:0.1333A P:0.8917W PF:0.5599 Lamp Flux:180x1 lm		
NAME: 489872-2700K HENDRIX	TYPE:489872-2700K HENDRIX	WEIGHT:
SPEC.:	DIM.:	SERIAL No.:
MFR.:	SUR.:	PROTECTION ANGLE:

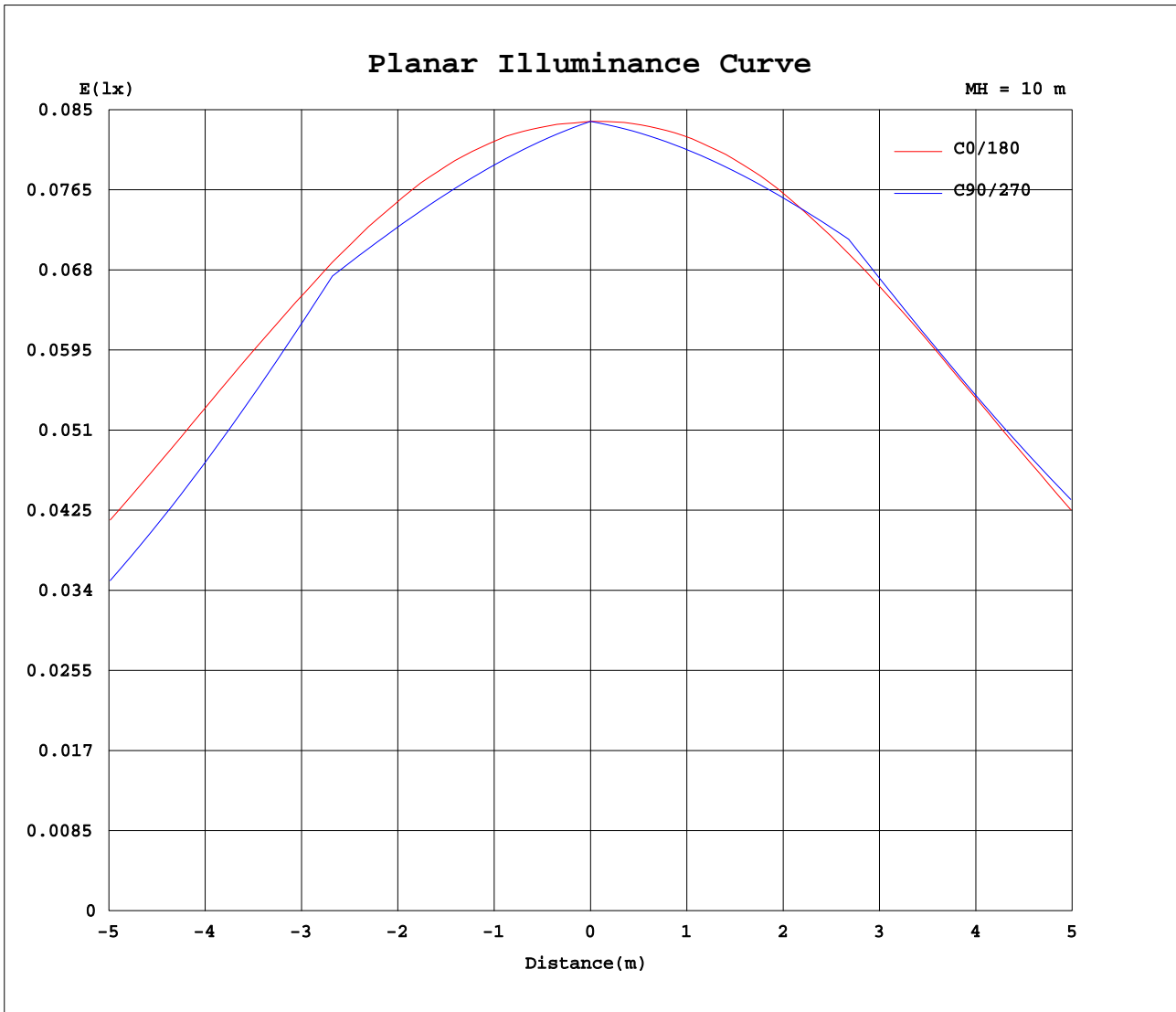
AvgL	cd/m2
L_0~180(65)av	9
L_0~180(75)av	7
L_0~180(85)av	1
L_90~270(65)av	9
L_90~270(75)av	7
L_90~270(85)av	0
L_45(65)av	9
L_45(75)av	7
L_45(85)av	0

Standard: GB/T 29293-2012

C Range: 0 - 360DEG  
C Interval: 5.0DEG  
Test Speed: HIGH  
Temperature:20DEG  
Operators:Y  
Test Date:2026-05-18

γ Range: 0 - 90DEG  
γ Interval: 0.5DEG  
Test System:EVERFINE GO-2000B\_V1 SYSTEM V2.0.291  
Humidity:65.0%  
Test Distance:8.750m [K=1.0000]  
Remarks:

Planar Illuminance Curve



C Range: 0 - 360DEG  
 C Interval: 5.0DEG  
 Test Speed: HIGH  
 Temperature: 20DEG  
 Operators: Y  
 Test Date: 2026-05-18

$\gamma$  Range: 0 - 90DEG  
 $\gamma$  Interval: 0.5DEG  
 Test System: EVERFINE GO-2000B\_V1 SYSTEM V2.0.291  
 Humidity: 65.0%  
 Test Distance: 8.750m [K=1.0000]  
 Remarks:







